

SITE PLAN Lot, DP 35397

1:250 @ A3

Cuthbert Ashmore Consultants Ltd.
CONSULTING ENGINEERS & PLANNERS
2A St Aubyn St., Devonport, AUCKLAND 0624

REMEDIAL RE-PILING
AT
17A CLIFTON RD, TAKAPUNA

SITE PLAN
DRAWING NO. S 01

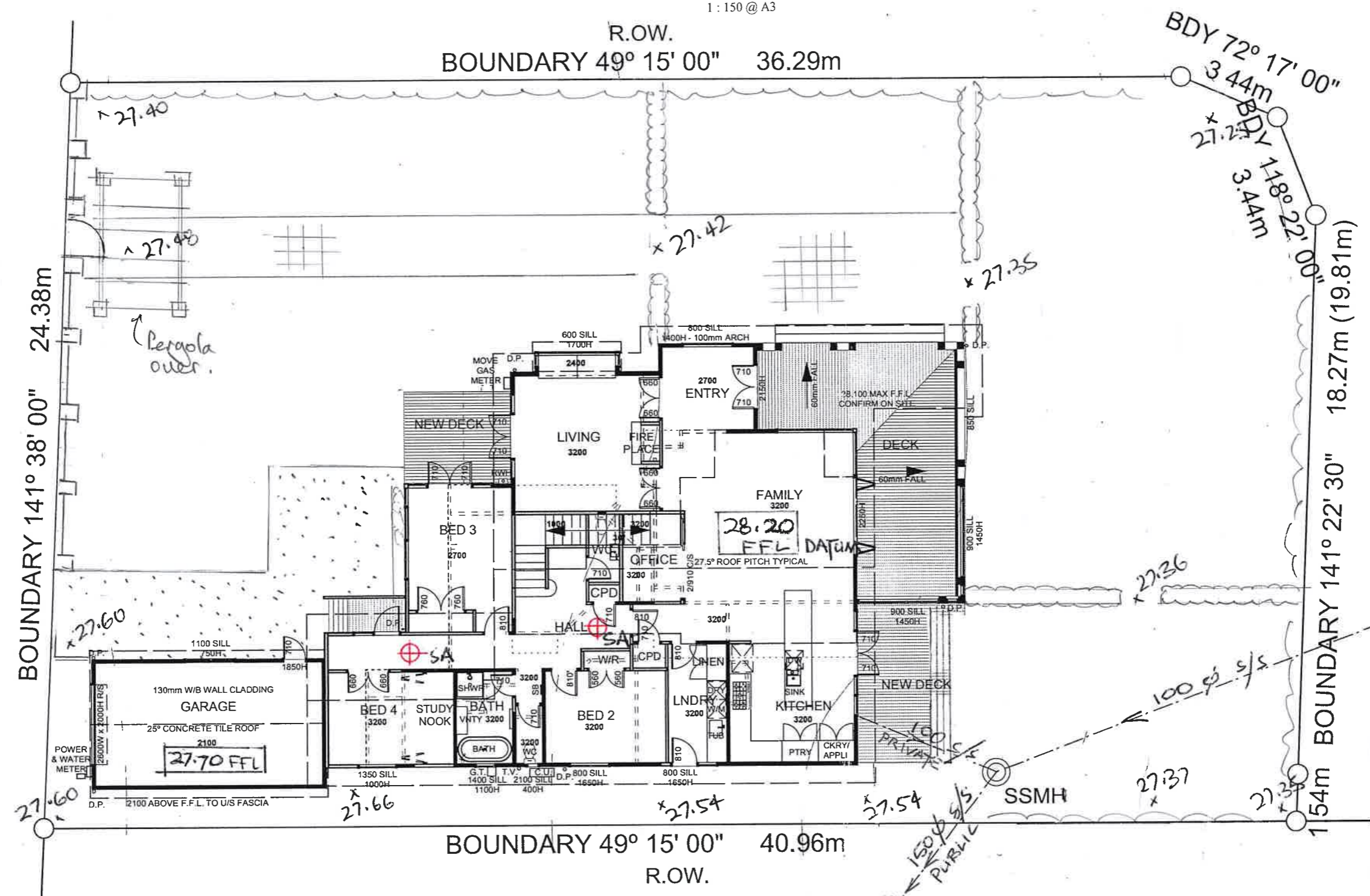


LEGEND
 * 27.40 = SITE LEVELS BASED ON GROUND FLOOR FFL = 28.20 (DATUM)
 SA = EXISTING SMOKE ALARM



CLIFTON ROAD

KERB



GROUND FLOOR PLAN & SITE PLAN

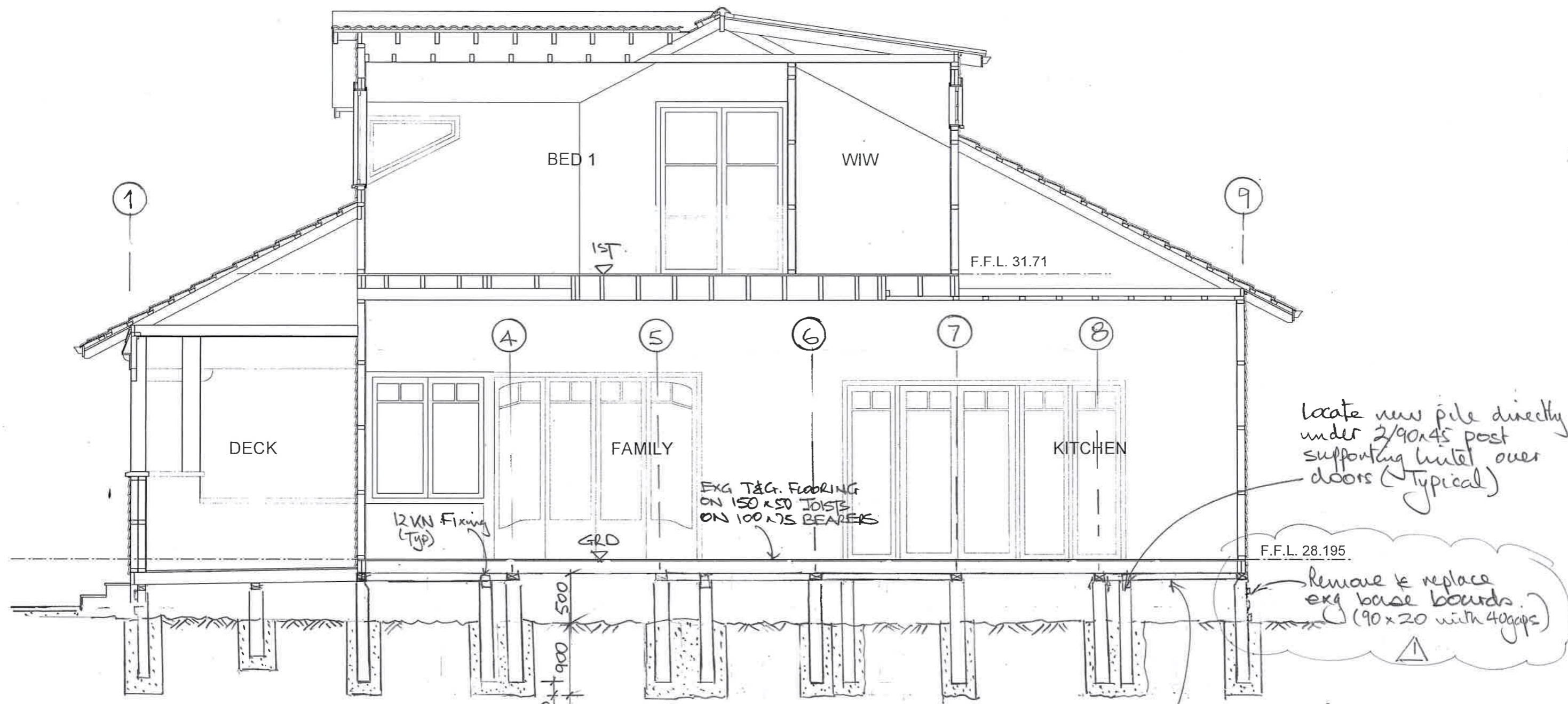
BCO10348561 Received by Auckland Council 17/05/2022

Cuthbert Ashmore Consultants Ltd.
 CONSULTING ENGINEERS & PLANNERS
 2A St Aubyn St., Devonport, AUCKLAND 0624

REMEDIAL RE-PILING
 AT
 17A CLIFTON RD, TAKAPUNA

SITE PLAN,
 + 1st & GROUND FLOOR PLANS

DRAWING NO. S 01A



New 125sq HS
Senton Piles cast
750 into 400sq x 900 deep
conc piles

SECTION A-A

1:50 @ A3

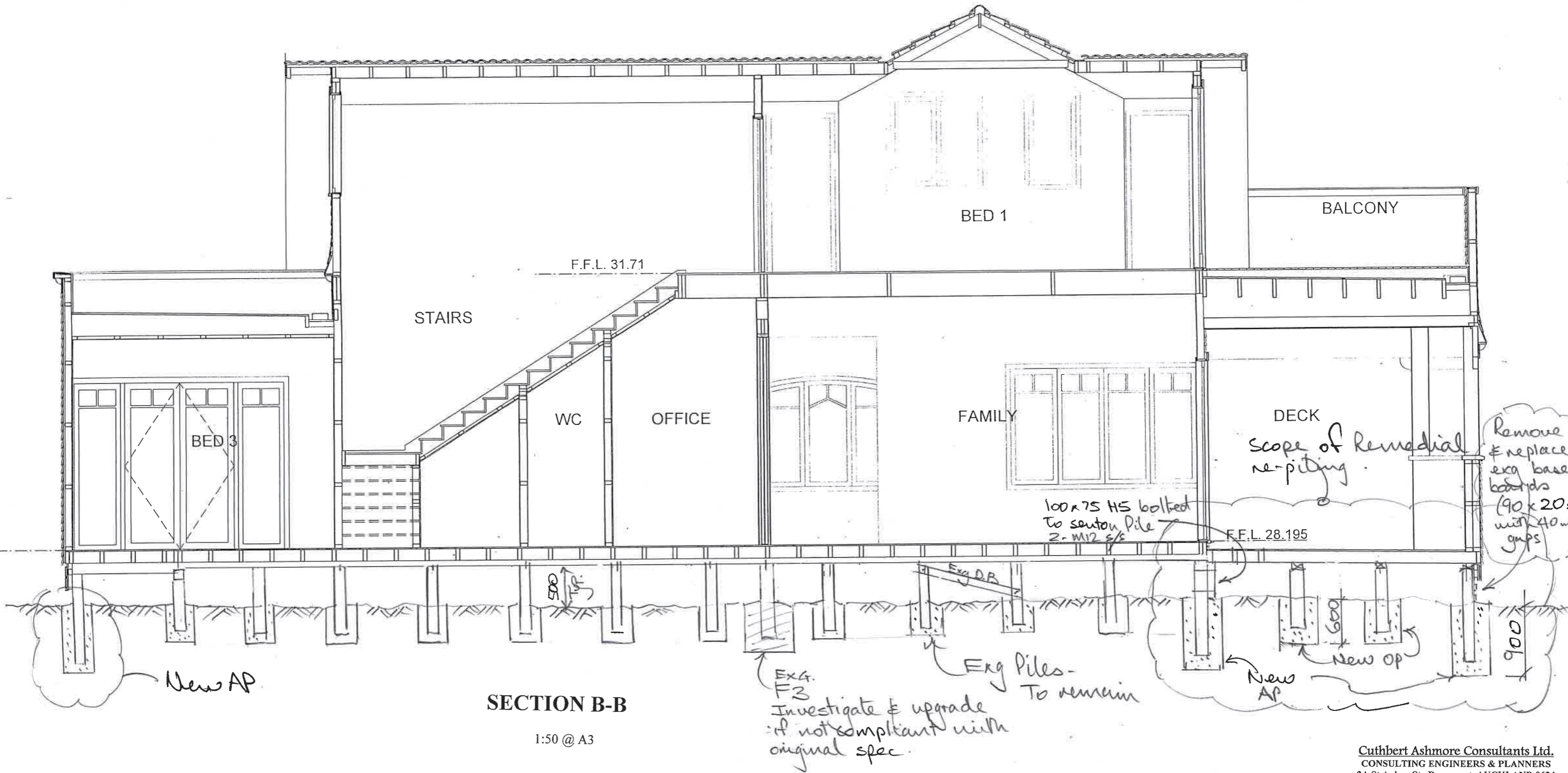
New 100 x 75
bearer over
new pile.

locate new pile directly
under 2/90x45 post
supporting lintel over
doors (Typical)

Remove & replace
exg base boards
(90x20 with 40gaps)

Cuthbert Ashmore Consultants Ltd.
CONSULTING ENGINEERS & PLANNERS
2A St Aubyn St, Devonport, AUCKLAND 0624
REMEDIAL RE-PILING
AT
17A CLIFTON RD, TAKAPUNA

SECTION A-A
DRAWING NO. S 03 Rev 1



SECTION B-B

1:50 @ A3

Cuthbert Ashmore Consultants Ltd.
 CONSULTING ENGINEERS & PLANNERS
 2A St Aubyn St., Devonport, AUCKLAND 0624

REMEDIAL RE-PILING
 AT
 17A CLIFTON RD, TAKAPUNA

SECTION B-B
 DRAWING NO. S 04 Rev 1

LUMBERLOK
ORDINARY PILE FIXING

10/2011

- Complies with NZS 3604:2011
- All Fixings Stainless Steel
- For all Ordinary Piles (Refer Figure 6.3 NZS 3604:2011)

Code: OPF
Packed: 20 x Stainless Steel Wire Dog Staples
20 x Stainless Steel Nails 90mm x 4 dia.

Available from leading Builders Supply Merchants throughout New Zealand

MiTek

LUMBERLOK
12kN PILE FIXING
FOR BRACED PILES OR ANCHOR PILES

01/2017

- The 12kN Pile Fixing must be installed in accordance with this brochure
- Auckland University Tested, Test Ref. 4613
- All subfloor construction must be in accordance with NZS 3604:2011
- NZS 3604 requires lines of lateral support to floor joists within 300mm of bearer or bracing lines, refer to Clause 7.1.2
- Joists deeper than 150mm require solid noggling over braced or anchor pile

12kN PACK OPTIONS

CODE	PRODUCT FINISH OPTIONS
STANDARD PACK 12KN	- All items HOT DIP GALVANISED
HIGH CORROSION PACK 12KNH	- All items STAINLESS STEEL

See Over For Corrosion Table.

SCAN FOR INSTALLATION VIDEO
<https://vimeo.com/117350344>

MiTek

LUMBERLOK

CORROSION HAZARD USE TABLE

Standard Pack (12KN) - Zones B & C - All Fixings ABOVE 600mm from Ground level	All items Hot Dip Galvanised.
High Corrosion Pack (12KNH) - Zone D - All Fixings BELOW 600mm from Ground level	All items Stainless Steel (304).

Sample Subfloor Elevations

12kN Fixing - Pile to Bearer
12kN Fixing - Joists to Bearer

PILE TO BEARER
- Nailon Plate (2 per joint) 1mm x 100mm (Typical) x 160mm long
- 8 Nails per Plate into Pile
- 8 Nails per Plate into Bearer
- 2 Skew Nails 90mm (1 per face)

JOIST TO BEARER
- CT160 Cleats (4 per Joist) 160mm long
- 3 Nails per Cleat into Joist
- 3 Nails per Cleat into Bearer
- 2 Skew Nails 90mm (1 per side)

NAILS
- 80 x 45mm x 3.55 dia. Spiral Nails
- 6 x 90mm x 4 dia. St. Steel Nails (12KNH Pack only)

Each set represents 1 x 12kN Pile Fixing (packed 4 sets per carton)
2 x Nailon Plates 160mm long
8 x CT160 Cleats
80 x 45mm x 3.55 dia. Spiral Nails
60mm x 4 dia. St. Steel Angular Groove 6 - 12KNH Pack

Refer front page for Product Finish Options

90mm H.D.G. Nails not included.

MiTek

