

Blending preservation
with elevation.



wexhāus
architecture · heritage



Wesley Spencer
DIRECTOR

We have operated in Melbourne since 2013 and in 2022 we were reborn as Wexhaus.

Since 2013, we have completed over 40 projects with a Heritage Overlay.

Out of his passion for heritage architecture, the director of Wexhaus, Wesley Spencer, has completed a Masters degree in Cultural Heritage, with the goal to specialise in heritage architecture and consultation.



Wexhaus offers a wide range of heritage services:

Adaptive Reuse

•

Heritage Studies

•

Heritage Impact Statements

•

Design and Documentation of Conservation Works

•

Heritage Advisory Services

•

Heritage Interpretation

ADAPTIVE REUSE



Wexhaus follows Victoria's guidelines and principles when considering change to heritage buildings in the Victorian Heritage Register, ensuring changes are aligned with Heritage Victoria's values.

Adaptive reuse is a form of conservation by repurposing an existing place for new use as an economic and sustainable approach to preserving Victoria's heritage buildings.

Services may focus on retention and repair of historic buildings, but also on the respectful new and added elements to a historic building to extend its life in a useful way.

HERITAGE STUDIES



Identifying and assessing heritage places through a thorough physical investigation of a place, followed by careful and accurate documentation, as well as desktop studies to understand elements of significance within the place.

- Historical research and collation of historical images, plans and maps
- Field investigation of a potential heritage place
- Comparative analysis of similar places to understand the relative importance of a place
- Assessment of significance

HERITAGE IMPACT STATEMENTS

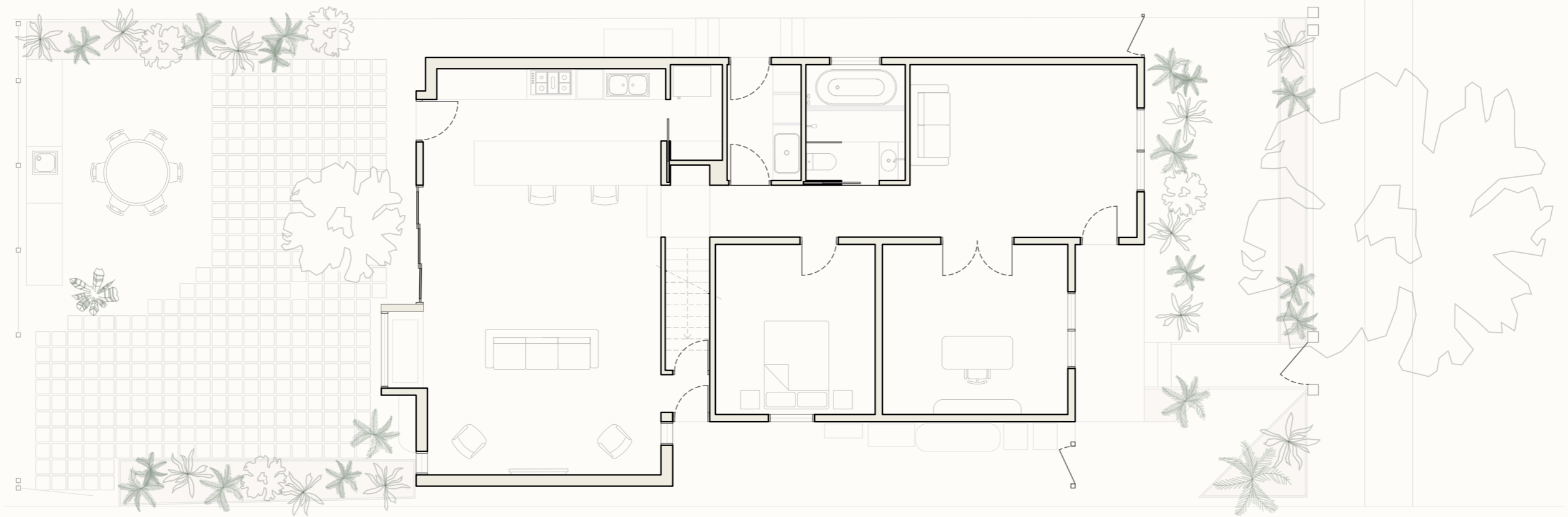


Wexhaus will prepare all checklist items required by Council to satisfy the Heritage Impact Statement. This typically includes, but is not limited to:

Establishing the cultural heritage significance of the place by assessing;

- Existing conditions
- Current use of the place
- Constraints and opportunities resulting from the significance of the place
- Analysis of the proposed works
- Alternative options considered
- Impact of the proposal on the cultural heritage significance of the place
- Reasons Council should support the proposal

DESIGN AND DOCUMENTATION OF CONSERVATION WORKS



Wexhaus provides design and construction documentation for conservation and restoration works to heritage places.

HERITAGE ADVISORY SERVICES



Wexhaus offers consulting and expert witness advice for designs to heritage projects that may be impacted by restrictive controls in Commonwealth or state legislation.

Wexhaus appraises heritage values against defined heritage criteria or guidance in relation to development opportunities and constraints.

HERITAGE INTERPRETATION



Wexhaus will assist in identifying cultural heritage that is significant to communicate to future users through various engagement techniques, while ensuring these interpretations form a cohesive element to the overall design, use and function.

"Architecture
should speak of
its time and place,
but yearn for
timelessness."

FRANK GEHRY



Partner with us
to preserve heritage.

(03) 9328 4220
hello@wexhaus.studio
wexhaus.studio