



2022
KIT HOMES

MAKING BUILDING EASY



IMAGINE

IF WE MADE
IT SIMPLE.



Our experienced team of professional planning & building consultants are here to help you every step of the way.



BUILD YOUR DREAM HOME WITH IMAGINE KIT HOMES



At Imagine Kit Homes, we are here to assist you with your dream of building a home that you will love. We can build you a home at an affordable price, with professional support throughout the process.

Our expert team have been at the forefront of kit home innovation & development for over 100 years. This has allowed us to refine and perfect the process of kit home design, manufacture & construction for clients in Australia & across the globe.

The professional team at Imagine will empower you to build your new architectural home faster. We can help you save more money than you ever thought possible on a new build. In house planning & building experts will assist

and guide you through every step of the design & building process. Every single customer receives personal ongoing attention & guidance from our dedicated team of industry experts.

We design strong steel framed homes to suit any site or location throughout the world. At Imagine Kit Homes our goal is to design a home to suit your budget, and a home that you will love.

Keith Richardson

Keith Richardson
General Manager

Contact:
enquiries@imaginekithomes.com.au
1800 548 723

CONTENT

8	ABOUT IMAGINE KIT HOMES
9	REAL PEOPLE, REAL EXPERIENCES
10	WHY USE STEEL FRAMING
11	CYCLONE AND TERMITE PROOF
12	INCLUSIONS
14	THE IMAGINE PROCESS
16	PROJECT TIMELINE
17	DESIGNED TO BE BEAUTIFUL
18	OUR RANGE
20	1 BEDROOM
26	2 BEDROOM
41	3 BEDROOM
57	4 BEDROOM
78	5 BEDROOM
91	MULTI-DWELLING





“

We have already recommended your company to friends who are currently beginning the process of building their next home.

Adam & Cathy
Mt. Gravatt, Brisbane

”

IMAGINE IF YOU WERE SUPPLIED WITH EVERYTHING.



Imagine Kit Homes are one of the worlds most trusted suppliers of architecturally designed, Steel Frame Kit Homes.

We provide the materials, guidance and step-by-step plans & instructions that allow clients to build an architecturally designed home they will love, at a price they can afford.

**Imagine Kit Homes
steel frame
construction system
makes it faster to
build a home than
traditional building
methods.**

With Imagine, you decide if you want to do the project yourself or simply manage local tradesmen to complete the project without lifting a finger.

Imagine Kit Homes have developed a reputation of delivering high quality, architecturally designed kit homes to customers throughout Australia and across the globe. The key to our success is our ability to provide a level of service and support that is rarely seen in the kit home industry.

IMAGINE IF YOU CAME FIRST

At Imagine Kit Homes we understand that building a new home is a big decision. With so many options available it can be a little overwhelming working out who to work with or where to start.

Imagine's team of dedicated planning & building consultants are always on hand to answer any of your questions and talk with you about your ideas.

We are here to guide and assist you throughout the entire process - making it simple to build a home you love.

We are available to help you throughout the buying process and beyond. **Call us on 1800 548 723.**





ABOUT IMAGINE KIT HOMES

At Imagine Kit Homes, our expert team have been at the forefront of kit home innovation & development collectively for over 100 years.

We have developed an international reputation as being the most advanced, highest quality and most reliable kit home company.

Built with the best steel framing system available, Imagine Kit homes have been sent throughout Australia and across the globe to owner builders and professional property developers alike.

The innovative pre-cut steel framing system we supply significantly reduces construction times, saving you money. Our kits include just about everything that is required to build a home you will love, faster and quicker than you ever thought possible!

With imagine kit homes you can save yourself up to 30% on the build costs of your new home. We provide you with the plans, materials and support you require to build a home that not only has a low eco footprint, but with a 50 year steel frame durability warranty, will last for generations to come.

REAL PEOPLE, REAL EXPERIENCES



“I would like to congratulate and thank Imagine Kit Homes for the excellent customer service that you provided to us throughout the entire kit design, purchase and building process. I have already recommended your company to friends who are currently beginning the process of building their next home, and are currently investigating kit homes.”

Adam & Cathy - Mt Gravatt, Brisbane



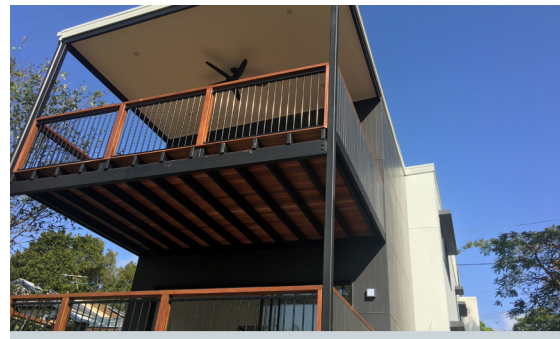
“We had never done anything like this before!, Initially we were apprehensive about taking something like this on. In hindsight, the detailed instructions coupled with the support we received from the team throughout enabled us to feel confident building our own home. Not only have we saved thousands, but we have built a home we absolutely love!”

Ken & Tania - Fiji



“Having built homes ourselves in the past – we can only say that this building system & process has by far been the easiest & most rewarding. The structure only took days to erect and we were at lock-up stage within a couple of weeks. From initial contact to after sales service – Imagine kit homes really do deliver. We are exceptionally happy with the Final result”

Keith M - New Zealand



“Building with Imagine Kit Homes has been a very rewarding experience. The money we saved by managing the project ourselves has enabled us to achieve a significantly higher spec home”

Mario & Jo - Brisbane

WHY USE STEEL FRAMING?



1 FASTER

Reduced Construction Times

Building with steel means faster construction times. Save time and up to 30% on build costs on your new home.



2 STRONGER

Cyclone & Termite Solution

Building with steel not only means a stronger home that is termite proof, but allows cyclone-strength options.



STRONGER WITH STEEL CYCLONE & TERMITE PROOF

Imagine Kit Homes exceed the standard strength, efficiencies and durability of traditional homes. Our steel frames will not rot, twist or warp and are also Termite & Cyclone proof. All steel framing we provide comes with a 50 year durability warranty giving you complete peace of mind.

Imagine Kit Homes can be designed to suit any environment or location on the globe. Homes can be designed for seismic regions as well as coastal and cyclone prone regions to withstand winds up to 309Kmh.

Building with steel not only means a home that is better for the planet, but a home that is superior against the forces of mother nature.



BUILT TO LAST

50 Year Warranty

Steel framing comes with a 50 year durability warranty backed by Bluescope™ steel, giving you complete peace of mind.



SUPPORT

Every Step Of The Way

Our team will support you from the initial design & planning stages right through to completion.

INCLUSIONS



“

Our experienced team of professional planning & building consultants are here to help you every step of the way.

”

INCLUSIONS

STANDARD INCLUSIONS:

- 5 sets of architectural plans and specifications for council.
- Additional set of detailed plans for construction including an accessories schedule.
- Engineers certification for all structural aspects of the building and if required an engineered floor system design.
- Standard concrete slab plan including detailed set out for tie down requirements.
- All fixings and detailed set out plans.
- Prefabricated Steel wall frames supplied with assembly details for ease of construction.
- High tensile tie down bolts for fixing all wall framing.
- Prefabricated steel roof trusses and associated roof members.
- 40mm steel roof battens and 22mm steel ceiling battens.
- Colorbond roof sheets, ridge capping, valleys, barge capping and all fixings.
- Colorbond fascia and quad gutters with all clips, fixings, brackets and outlets.
- Aluminium sliding windows and sliding doors.
- Hardiflex, Hardi Plank or Blue Board cladding for building exterior (other claddings available at additional cost).
- All fixings, flashings and timber battens for external cladding
- 50mm Anti Con roof blanket to main roof area.
- Double sided wall insulation to exterior walls and gable ends.
- 10mm plasterboard internal linings to ceiling and walls including all fixings, paper joining tape, setting compound and external metal corners.
- 90mm cove cornice and adhesive.
- Gainsborough G2 series contemporary internal angular levers with 65mm round rosettes to all internal swing doors with privacy sets to bathroom, ensuite, wc.
- Front entry – 2040mmx820mm corinthian pmd104 with translucent glazing & standard 140mm timber single timber entry frame (no sidelights) included. Gainsborough contemporary series single cylinder angular trilock included.
- Internal doors are redicoat hollow core doors including door jambs.
- Architraves – 42x12mm.
- Skirting -68x12mm.
- Eaves moulding – 19x19mm bullnose.
- Robes as per plans. (Excluding doors)

- Robe and linen cupboard supports – 42x19mm.
- Robe and linen cupboard shelving – 16mm white melamine.
- Chrome hanging rails and supports in all robes.

Non-Standard Aesthetic Upgrade Options

Imagine Kit Homes are fully customisable and can be upgraded from the standard inclusions listed. We offer multiple upgrade options for Cladding, Roofing, Windows, Doors (Including Double Glazing) and Decking - with a complete range of colours & textures available for each.

To get a quote on non-standard aesthetic upgrade options simply get in touch or get a quote through the online quoting system available at imaginekithomes.com.au

Non-Standard Structural Upgrade Options

Imagine Kit Homes can be engineered to suit any location on the planet - From high wind zone environments to flood zone areas. We offer cyclone upgrades from the Kit standard C2 cyclone rating, where the structure can be strengthened to withstand up to 309Kmh winds (Cyclone category 4). We also make available an elevated floor system upgrade to suit homes that are to be built on sloping sections, flood zone areas and other areas where a concrete slab is not the most cost effective option.

To get a quote on non-standard structural upgrade options for your next home simply get in touch or get a quote through the online quoting system available at imaginekithomes.com.au

Please Note that Imagine kit homes does not provide any item not quoted for and not listed on the standard inclusions list unless specifically stated in your quote.

Items not included: All Forms of Labor. Waterproofing. Tiling. Painting. Plumbing and Electrical materials / fittings. Downpipes. Internal joinery to Kitchens & Bathrooms. Personal Choice Items such as flooring & window Coverings. Excluded items: Standard & sliding robe doors. Garage doors. Internal & external Stairs & balustrades. Awnings & Pergolas. Building Insurance.

GETTING STARTED

THE IMAGINE PROCESS



SELECT YOUR DESIGN

Base your selection on how many bedrooms you require and how much space your family needs. All plans can be adjusted to specific requirements.

If you prefer, we can design your own plan from just \$2950.



MAKE CHANGES OR START FRESH

Any of our plans can be modified or we can easily custom design your new home. Our straight forward approach to designing ensures the design process is fast and efficient.



GET A FINAL QUOTE

Once you have finalised your plans we can quote your home down to the last bolt and screw.



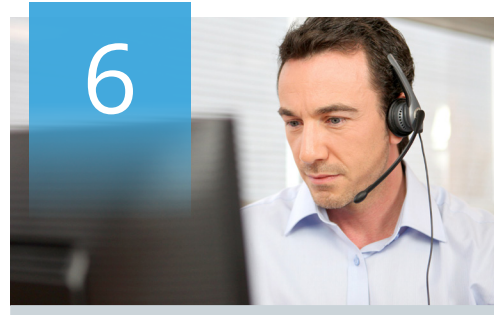
GET COUNCIL APPROVALS

Let us assist in obtaining a quote for the certification process from your local council.



MATERIALS ARRIVE AT THE DOOR

Some clients prefer all of the materials to arrive at once or set up a delivery schedule with your project manager so the materials arrive as required.



ONGOING SUPPORT

If you get stuck just pick up the phone, we will guide you through the construction process every step of the way. We pride ourselves on our customer service.



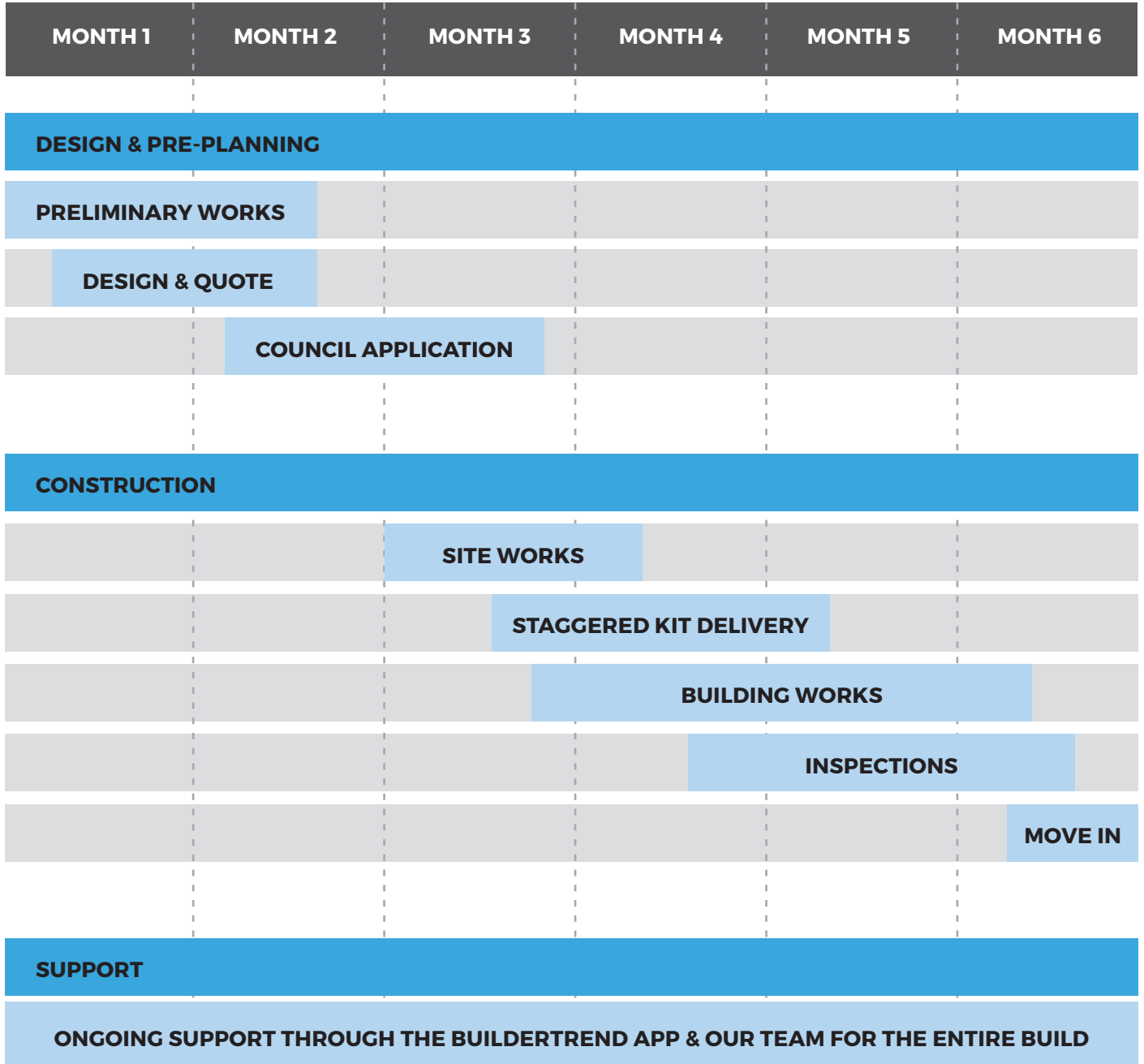
The team at Imagine made the whole process of supply a breeze.

Vi & Paul
Biggera Waters, Gold Coast



STANDARD BUILD SCHEDULE

Imagine Kit Homes are not only more cost effective, they can also be faster to build than traditional homes. **Below is an example timeline of a typical build.**



Powered by



- FREE step by step custom project management application
- Owner builder guidance and support
- Transparency and connectivity through our owner builder support network



IMAGINE KIT HOMES DESIGNED TO BE BEAUTIFUL

In the past, Kit home suppliers have been known for boring designs and relatively poor quality. When people thought “Kit Home” they thought of cookie cutter homes with little thought to architectural design. With Imagine we have fundamentally changed this mindset. We deliver homes that are architecturally designed and made with the highest quality materials.

Our founders believe that form follows function. We design stunning homes that work. Imagine Kit homes will assist you to build a home that is not only better for the environment, but a home that you will love designed just for you and at a price far better than you ever imagined.

OUR RANGE

Our founders believe that form follows function. At Imagine Kit Homes you will receive the guidance and step-by-step instructions to either project manage or self build an architecturally designed home that is better for the environment.

From Granny flats to multi unit designs, our latest range of architecturally designed kit homes are designed to showcase what is now possible with kit home construction now.

Not only can they all be customised aesthetically to suit your personal taste and requirements but we can also customise the layout & structure to suit your specific site and location.

To enquire about any of the designs in this brochure, reach out to one of our planning & building consultants at 1800 Imagine or get a quote online at imaginekithomes.com.au.

**700+ DESIGNS TO CHOSE FROM OR
LET US DESIGN YOUR CUSTOM PLAN
FROM JUST \$2950**

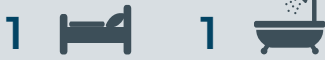


1 BEDROOM KIT HOMES



BILLABONG

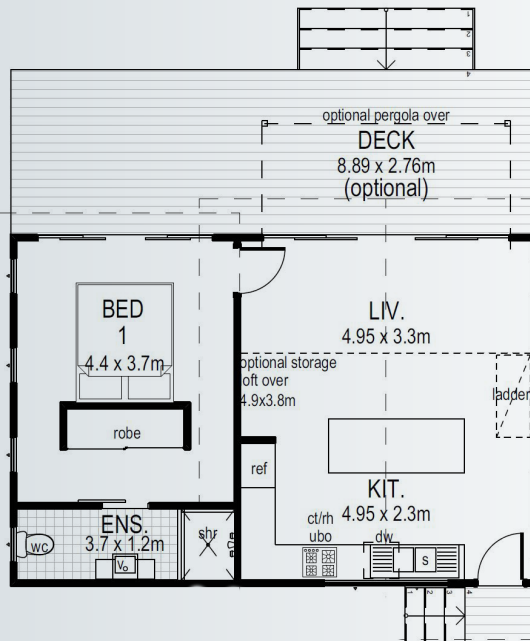
52.3m²



Internal Living 52.3m²
Outdoor Living 24.5m²

House length 8.6m
House width 8.9m

The quintessential home for people looking for a feeling of space, freedom & comfort in a small home design. A big feature of this design is the open-plan living, dining & kitchen area – offering vast amounts of light & space.



ECO BOX

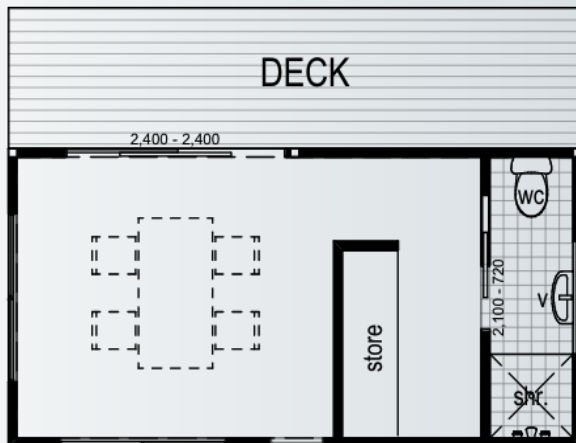
31m²

1 BEDROOM



Internal Living 19.6m²
Outdoor Living 12.3m²

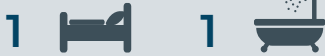
House length 6.18m
House width 3.18m



The affordable EcoBox™ Tiny House is a 1 bedroom, 1 bathroom unit with additional internal storage. Intricately designed to maximise floor space and usability, this amazing tiny house has a total area of just on 19m2. The design team worked tirelessly to ensure ample natural light, giving a feeling of space and freedom whilst maximising the full potential of the available floor space.

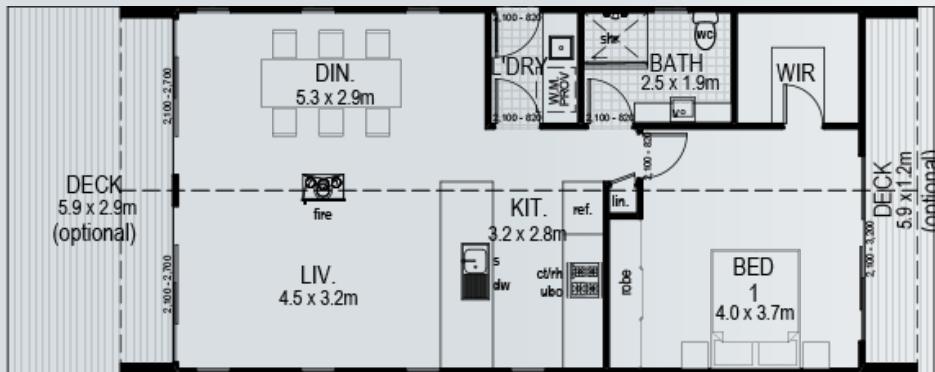
COOLAMON

74m²



Internal Living 70m²
Outdoor Living 22m²

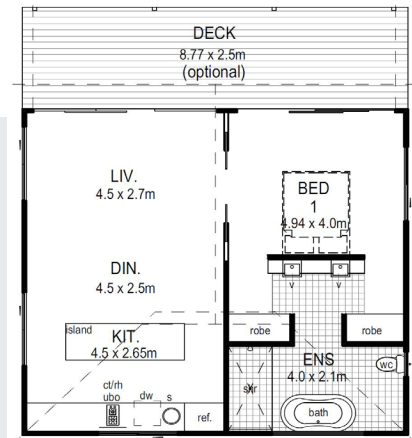
House length 8.8m
House width 10.5m



This modern design features an island kitchen that merges with an open-plan style living, dining & lounge area – complete with free standing fire. Large windows at each end of the home let in ample natural light. Impressive indoor-outdoor flow is created with semi-enclosed terraces at both ends of the house.

CANBERRA

92m²



1 BEDROOM

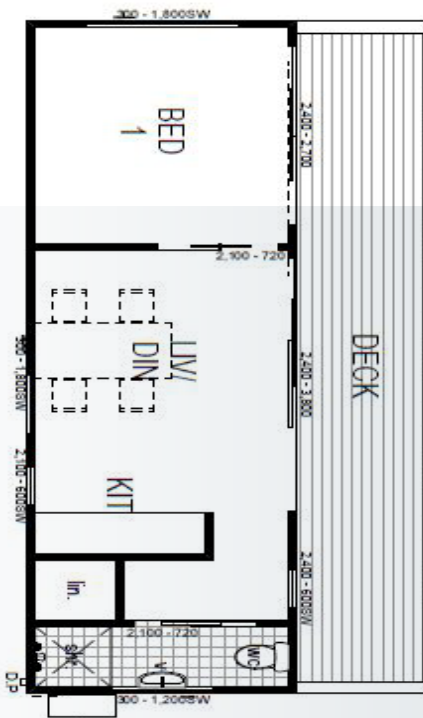


Internal Living 70m² **House length** 8.8m
Outdoor Living 22m² **House width** 10.5m

A Timeless design with an open plan kitchen, dining and lounge area. Extensive windows throughout the design allow for natural light to both living and bedroom areas.

SEASPRAY

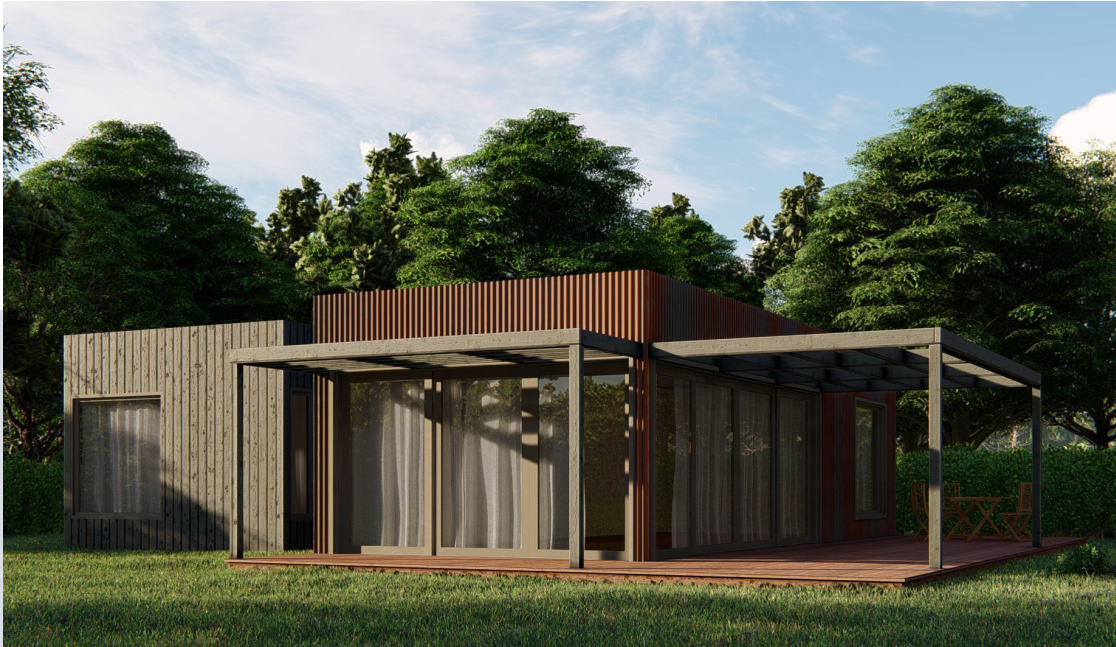
46.6m²



Internal Living 15.4m² **House length** 4.7m
Outdoor Living 31.2m² **House width** 9.9m

MORETON

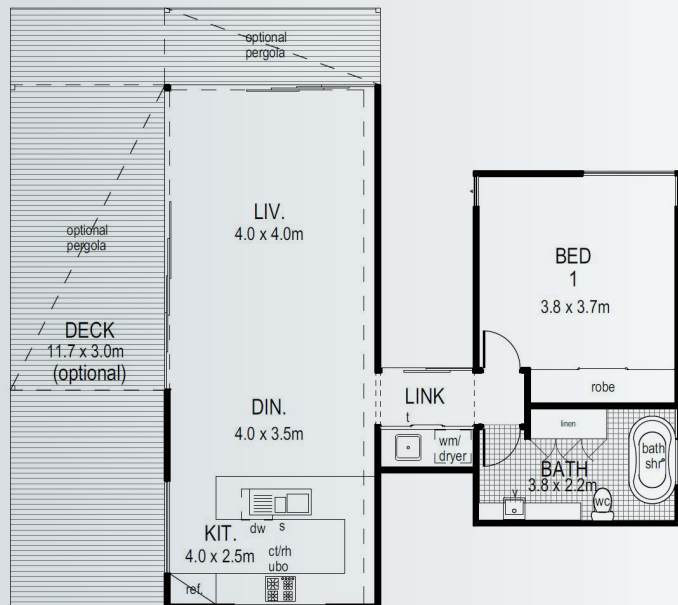
74m²



Internal Living 74m²
Outdoor Living 41m²

House length 11.7m
House width 13m

The Moreton is a modular style home, featuring a modern open-plan living, dining & kitchen area. Living areas are surrounded by a full length porch – ideal for entertaining family & friends in the warmer months. Full height windows and doors run the length of the exterior allowing for plenty of natural light to enter the home.



PINNACLE

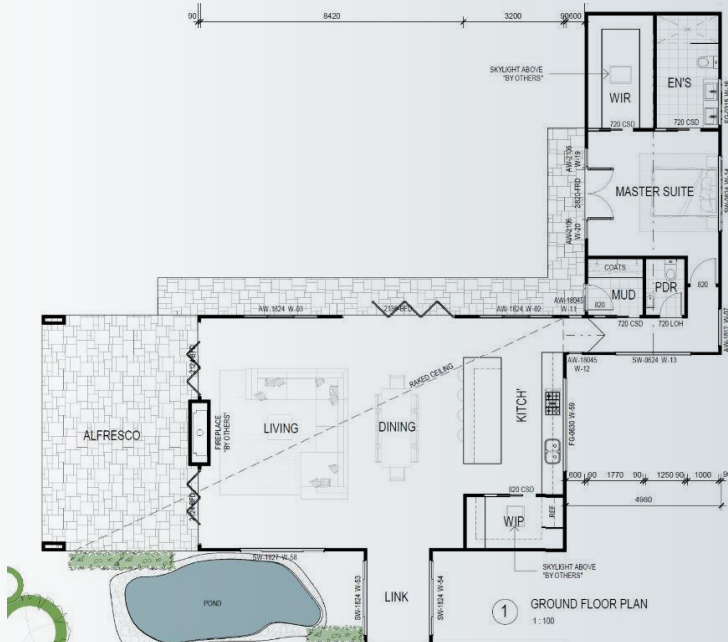
176m²

1 BEDROOM



Internal Living 137.7m²
Outdoor Living 38.2m²

House length 21.78m
House width 17.28m



New range of granny flats designed for adding an additional dwelling in your back yard. Ideal for family accommodation, pool house, teenager retreat or guest accommodation.

2 BEDROOM KIT HOMES



BAYSIDE

65m²

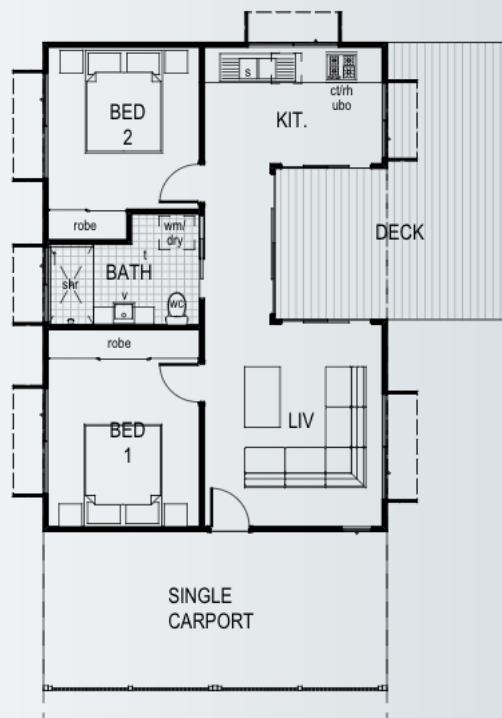
2 BEDROOM



Internal Living 65m²
Outdoor Living 36.2m²

House length 12.6m
House width 9.2m

2 1 1



How do you squeeze lifestyle into 65m²? Simple... with an imagination; exactly what was required when crafting the Bayside escape. With 2 bedrooms and a functional living area, the bayside is a great place to escape on holidays or the perfect granny flat for the extended family.

TRITON

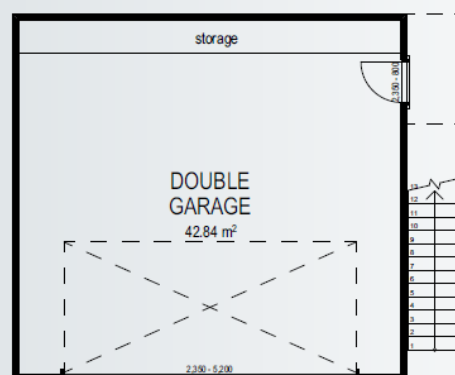
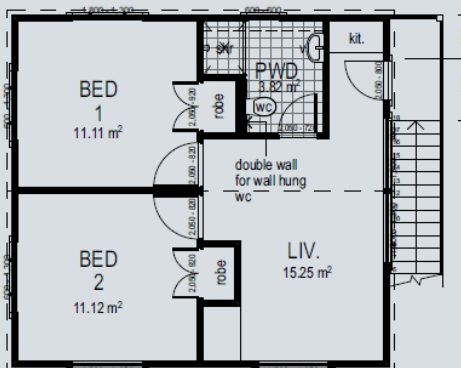
84m²



Internal Living 84.14m²

House length 7m

House width 6.5m



BANGALOW

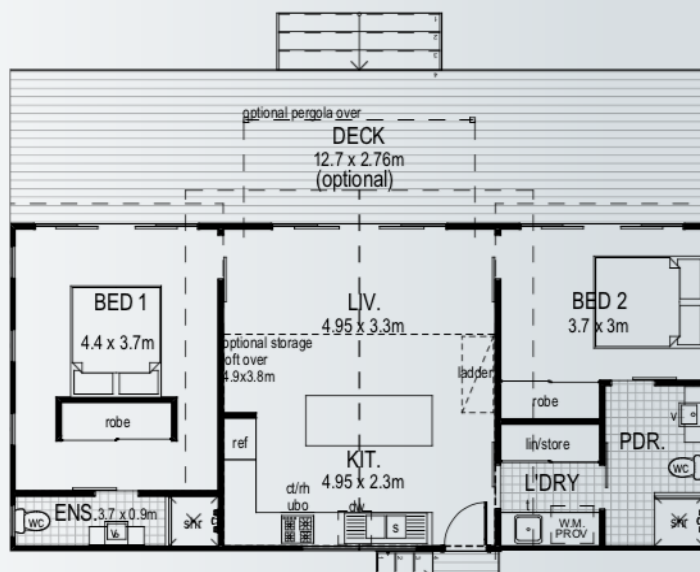
75m²

2 BEDROOM



Internal Living 75m²
Outdoor Living 35m²

House length 8.6m
House width 12.7m



A timeless design that features 2 large size bedrooms – each with their own ensuite bathroom. The large open plan Island kitchen connects with the living & dining areas seamlessly, creating a modern open-plan environment.

BACHELORETTE

86m²

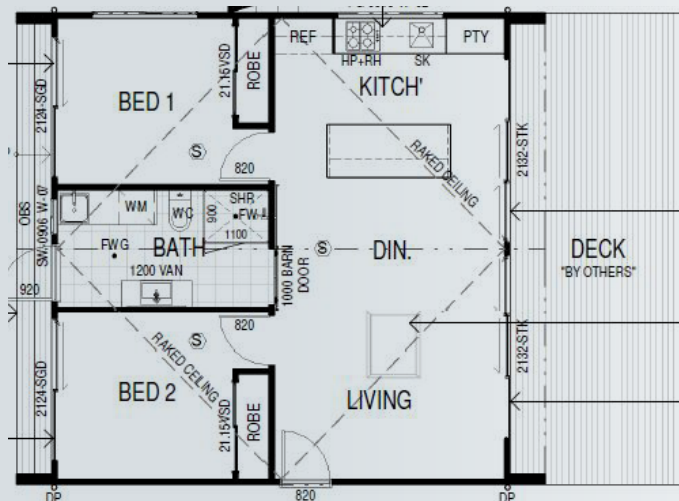


2 

1 

Internal Living 62m²
Outdoor Living 24.4m²

House length 11.4m
House width 8m



SKY GABLE

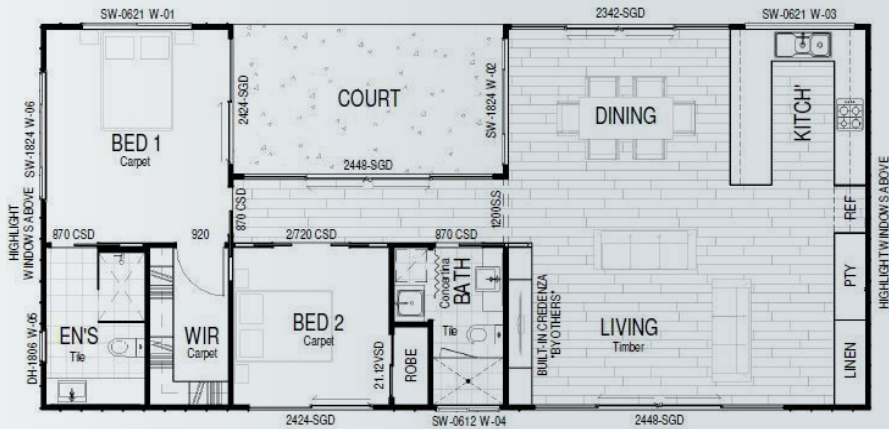
116m²

2 BEDROOM



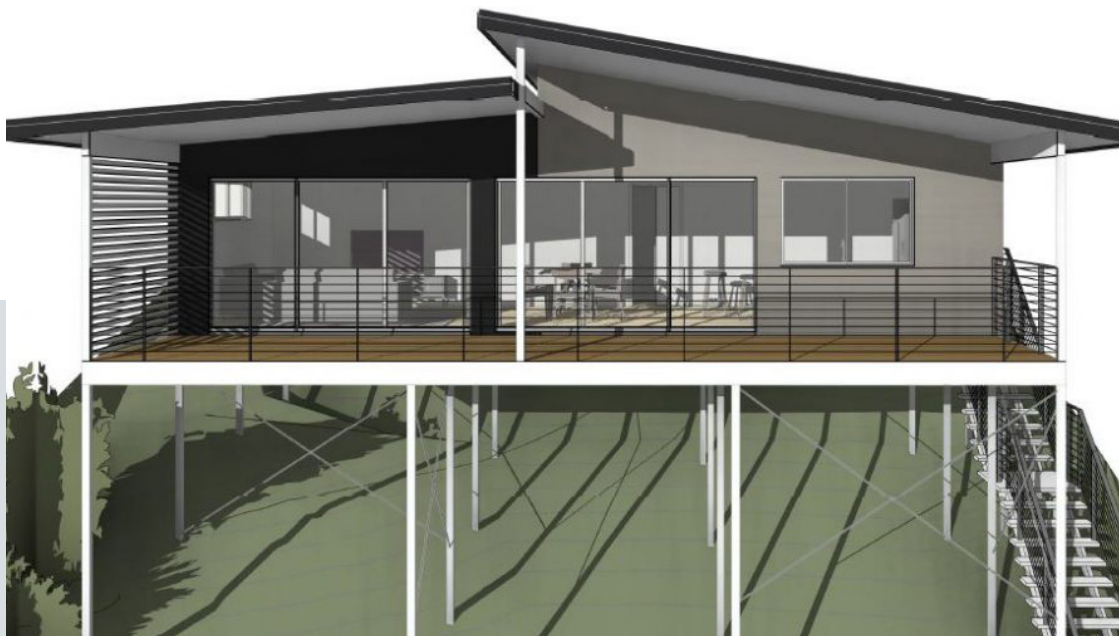
Internal Living 101m²
Outdoor Living 15m²

House length 7.3m
House width 15.9m



BKEEN

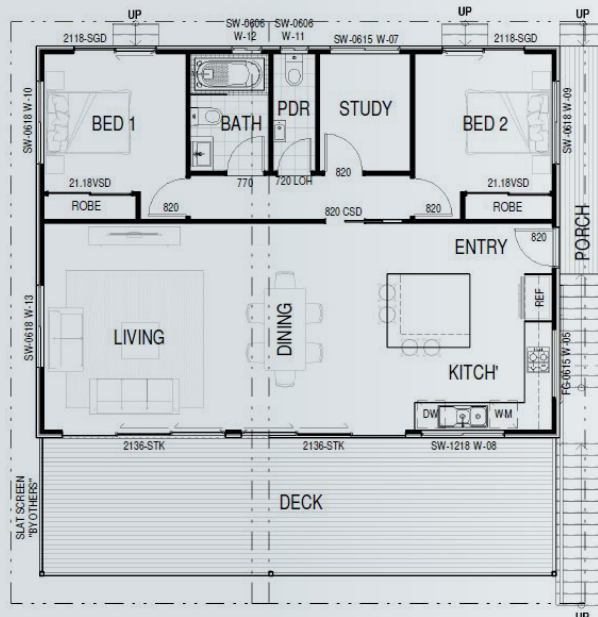
135m²



2 1.5

Internal Living 95.7m²
Outdoor Living 40m²

House length 11.5m
House width 11.4m



CHANNON

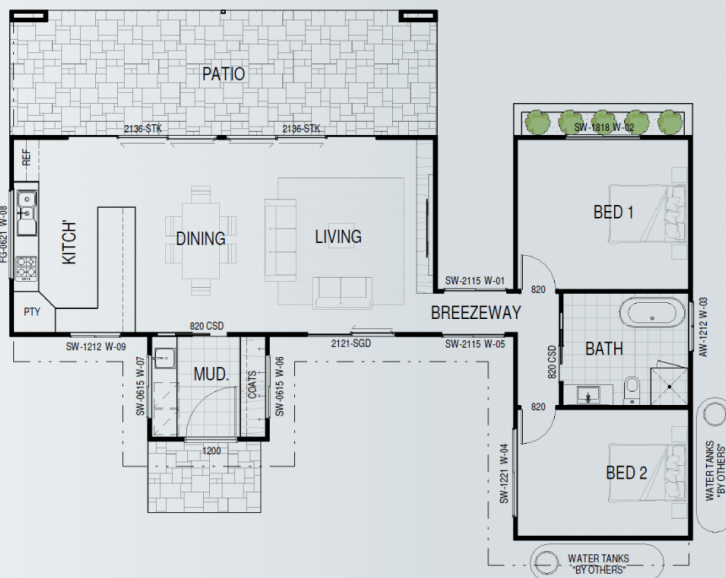
129m²

2 BEDROOM



Internal Living 98.4m²
Outdoor Living 31m²

House length 16.2m
House width 12.6m



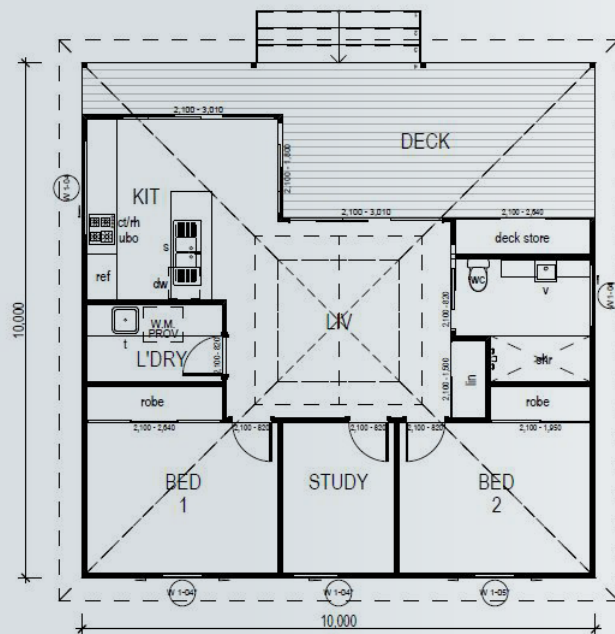
BEACH SHACK

77m²



Internal Living 77m²
Outdoor Living 22m²

House length 10m
House width 10m



PACIFICA

92m²

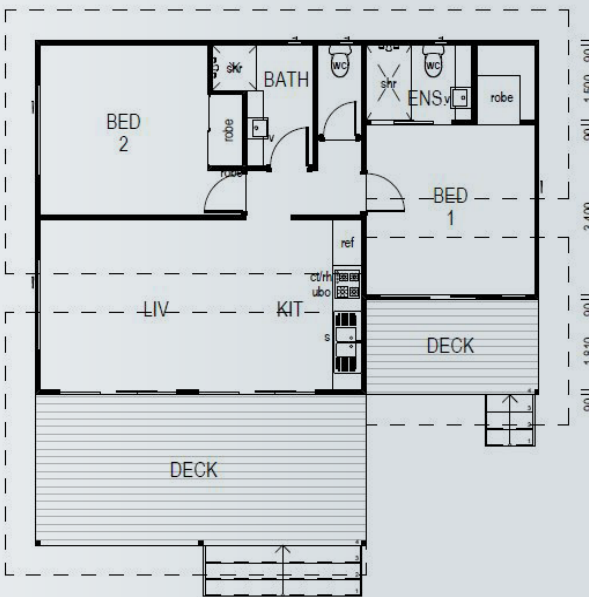
2 BEDROOM



Internal Living 65.4m²
Outdoor Living 26.7m²

House length 10.1m
House width 10.2m

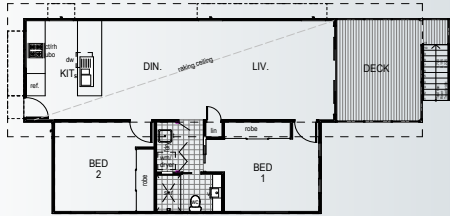
2  2 



SABRE
100m²



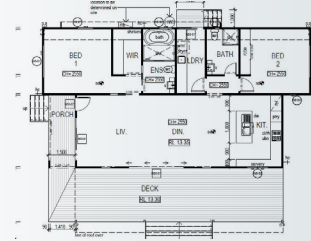
2 1 | Internal Living 85.6m² House length 14.78m
Outdoor Living 14.4m² House width 7.87m



GINGER
152m²



2 2 | Internal Living 105m² House length 15.1m
Outdoor Living 47.2m² House width 7.8m



“

We work with our clients to make sure they are happy at every stage of the process. We understand the significance of building your dream home and making it perfect.

”

SOPHISTICATED
ARCHITECTURAL
KIT HOMES LIKE
NO OTHER



JONAH

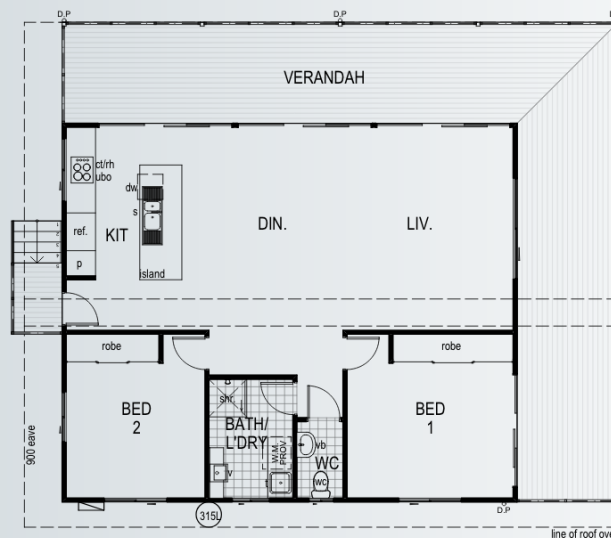
163m²



Internal Living 97m²
Outdoor Living 66m²

House length 9m
House width 10.8m

If you are looking for a well designed two bedroom granny flat plan then the Jonah could be a perfect choice. Change the roofline to a skillion design if you want something more modern or change the cladding and colouring to match your ultimate design styling. Either way, eco or modern, you'll have a 2brm home design you'll be proud of.



MEKI

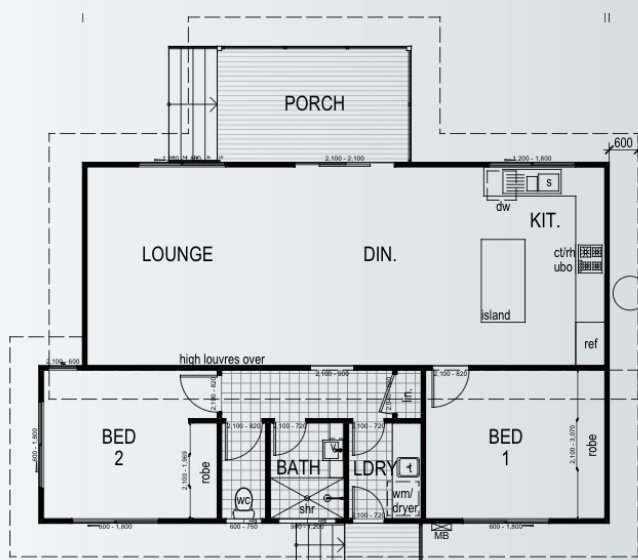
91m²

2 BEDROOM



Internal Living 81.4m²
Outdoor Living 9.6m²

House length 7.45m
House width 11.77m



A smart little home with two bedrooms, one bathroom and a casual roofline that suits holiday cabins or even the backyard granny flat for an extended family or the ultimate Airbnb investment. This home is fast to build and very affordable.

NOVA

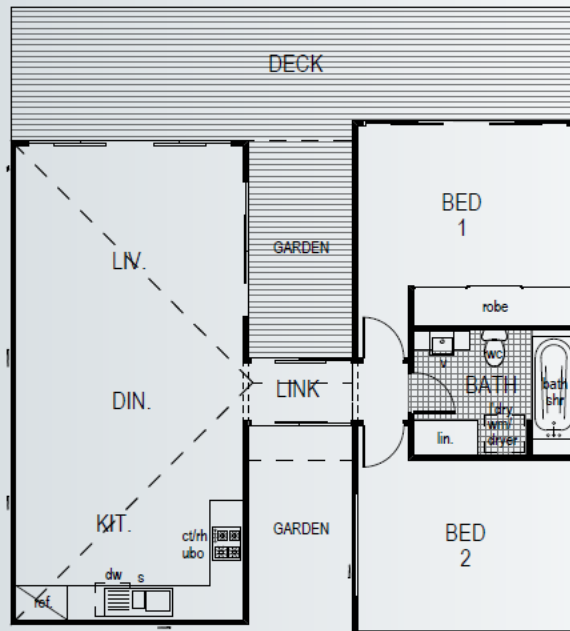
88m²



Internal Living 74m²
Outdoor Living 14m²

House length 12m
House width 9.1m

Better things come in small packages right? Correct! This modern design offers both comfort and clever design elements maximising entertainment with living, separate dining and a covered deck allowing you to showcase your beautiful home.



3 BEDROOM KIT HOMES



BREEZES

140m²

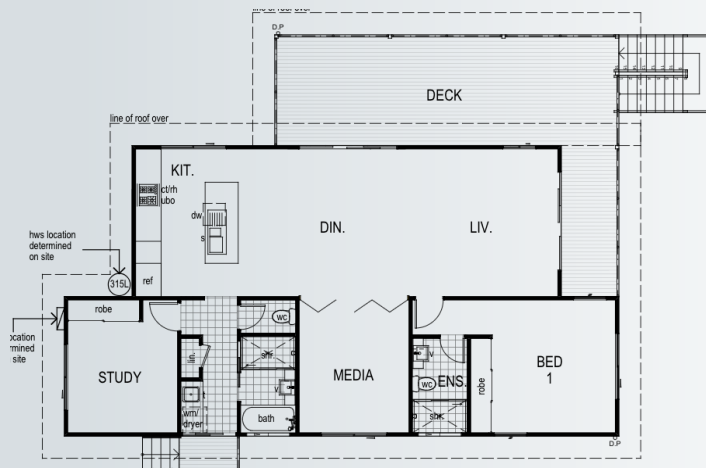


3  2 

Internal Living 105m²
Outdoor Living 35 m²

House length 10.9m
House width 15.1m

Sloping sites are no match for the Breezes Kit Home which has been designed to form to the lay of the land. A great use of stairs and dancing roof lines gives the onlooker a sense of freedom. The double car garage is well positioned on the bottom floor of the residence. If you are looking for house plans suitable for wetland areas then this is the home for you.



VARLEY

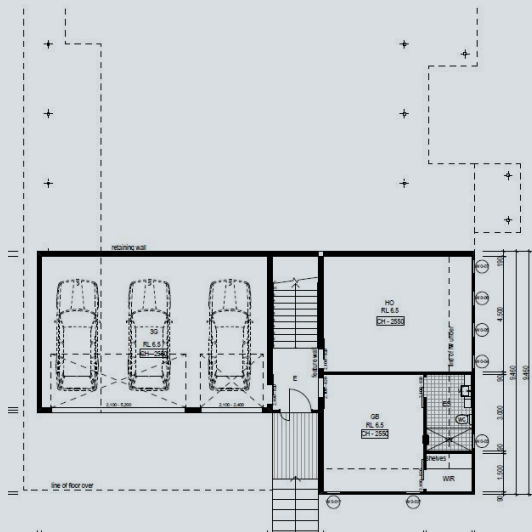
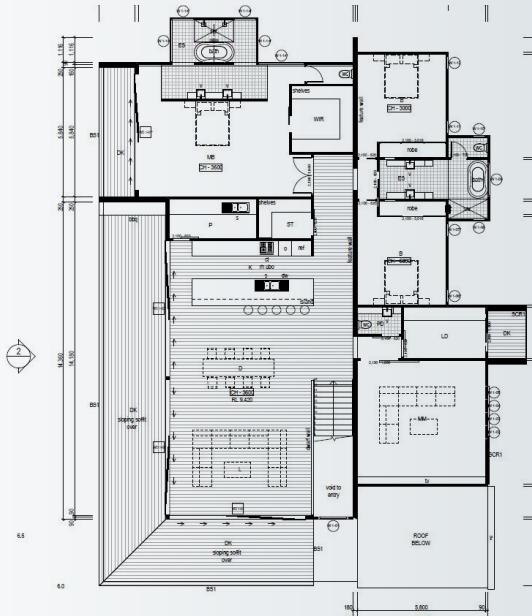
504m²

3 BEDROOM



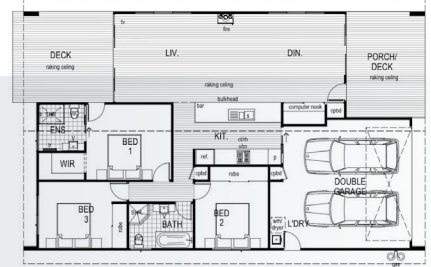
Internal Living 421m² **House length** 25.9m
Outdoor Living 83m² **House width** 18.9m

3 3.5 3



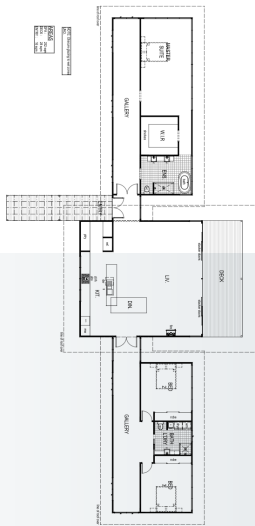
ALPINE

192m²



Internal Living 156m² **House length** 16.9m
Outdoor Living 36m² **House width** 10.6m

The Alpine Kit Home with a high pitch roof and an attractive raked ceiling. This design offers a modest appeal with a sensational wow factor on entry. A realistic size that is ideal for small families or the ultimate holiday batch.



BEAUFORT

296m²



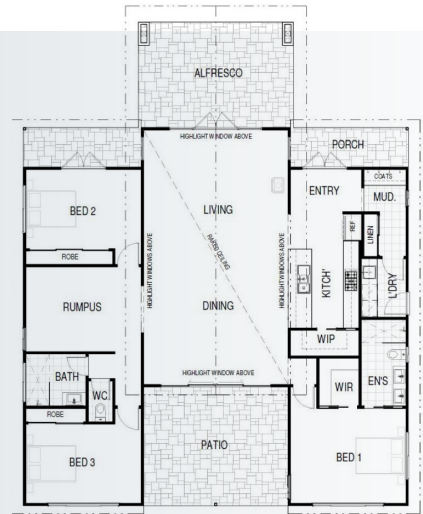
If you have a block with a view and a love of glass then nothing will make you happier than waking up to a sunrise in your new Beaufort design. Add a garage or carport as required. This Pavilion style of home is a real head turner.



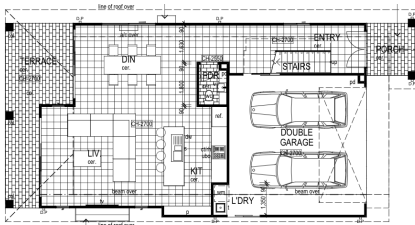
Internal Living 252m² **House length** 9.4m
Outdoor Living 44m² **House width** 39.1m

CINDY

256m²

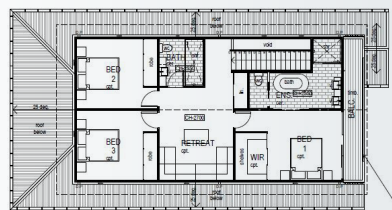


3 3 | Internal Living 170m² House length 18.3m
Outdoor Living 85m² House width 14.6m



CASUARINA

227m²



This spacious classical Hampton's style home is sure to blend in to any neighbourhood. Vast, inviting, open plan living separated from upstairs bedrooms and private retreat. This plan has 3 bedrooms featuring the main bedroom fit for a king and queen.

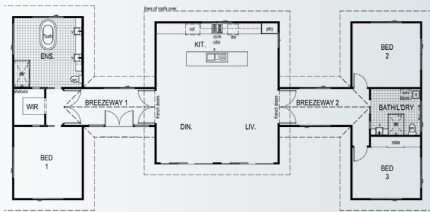
3 3.5 2 | Internal Living 205m² House length 14.5m
Outdoor Living 23m² House width 8.6 m

CLEAR MOUNTAIN

177m²



3 2 | Internal Living 169m² House length 23 m
Outdoor Living 8m² House width 10.3m

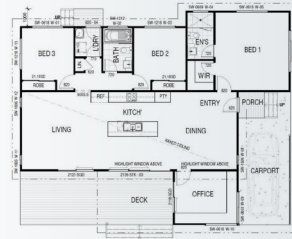


AKINA

186m²



3 2 1 | Internal Living 133.6m² House length 12.3m
Outdoor Living 52.4m² House width 15.6m

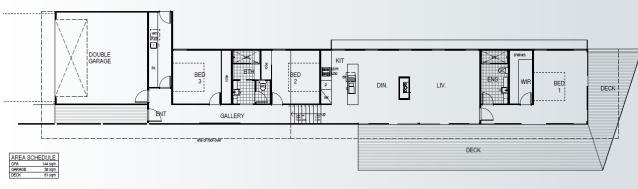


DRAGON FLY

243m²



3 2 2 | Internal Living 182m² House length 37.57m
Outdoor Living 61m² House width 7.5m



ELATION

207m²



3 3 1 | Internal Living 181m² House length 16.9m
Outdoor Living 16m² House width 15.1m

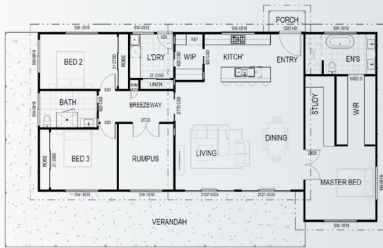


AKAOA

232m²



3 2 | Internal Living 165.4m² House length 20.2m
Outdoor Living 67.2m² House width 12.8m

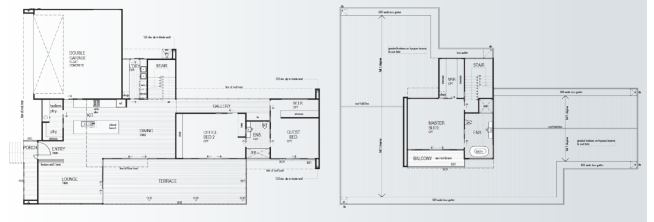


FAR NORTH

373m²



3 2 2 | Internal Living 246m² House length 17.65m
Outdoor Living 68m² House width 26.8m

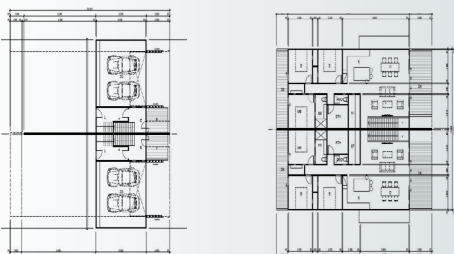


HEIGHTS

204m²



3 2 2 | Internal Living 171m² House length 20.8m
Outdoor Living 33m² House width 7.2m

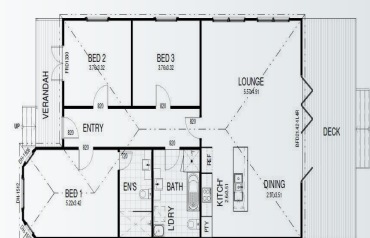


ROSE

157m²



3 2 | Internal Living 123.2m² House length 18.7m
Outdoor Living 33.3m² House width 8.6m

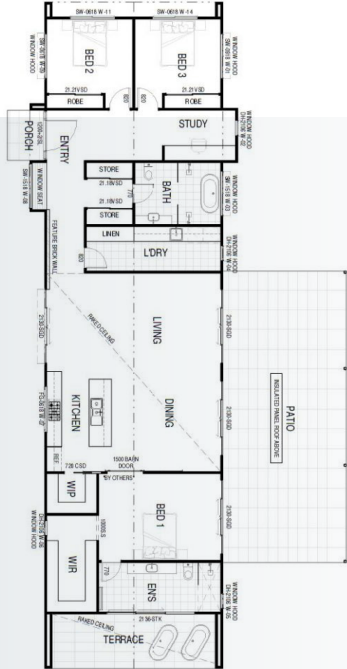


CHAPPELL

275m²

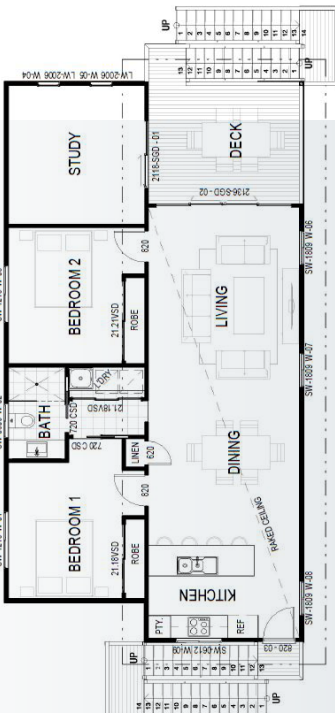


Internal Living 174.8m² **House length** 26.9m
Outdoor Living 78m² **House width** 12.7m



CRESSY

113m²



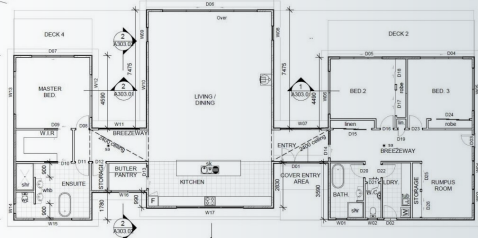
Internal Living 99m² **House length** 14.8m
Outdoor Living 14.5m² **House width** 7.8m

GALATEA

266m²



3 2.5 | Internal Living 266m² House length 13.3m
Outdoor Living 9.4m² House width 29m



MAY

182m²



3 3 | Internal Living 165.2m² House length 9.9m
Outdoor Living 17.4m² House width 11m



GOLSPIE

156m²



3 2 | Internal Living 116.9m² House length 12.1m
Outdoor Living 39.3m² House width 12.9m

KIOLOA

411m²



Internal Living 326.2m²
Outdoor Living 84.5m²

House length 15m
House width 17.6m

Standing out in the crowd won't be a problem when you're living in the KioLoa Kit Home. Extremely well priced and offering a massive floor area, the home is uniquely designed with a feature internal breezeway, unlike anything you have seen.



THE RIDGE

281m²

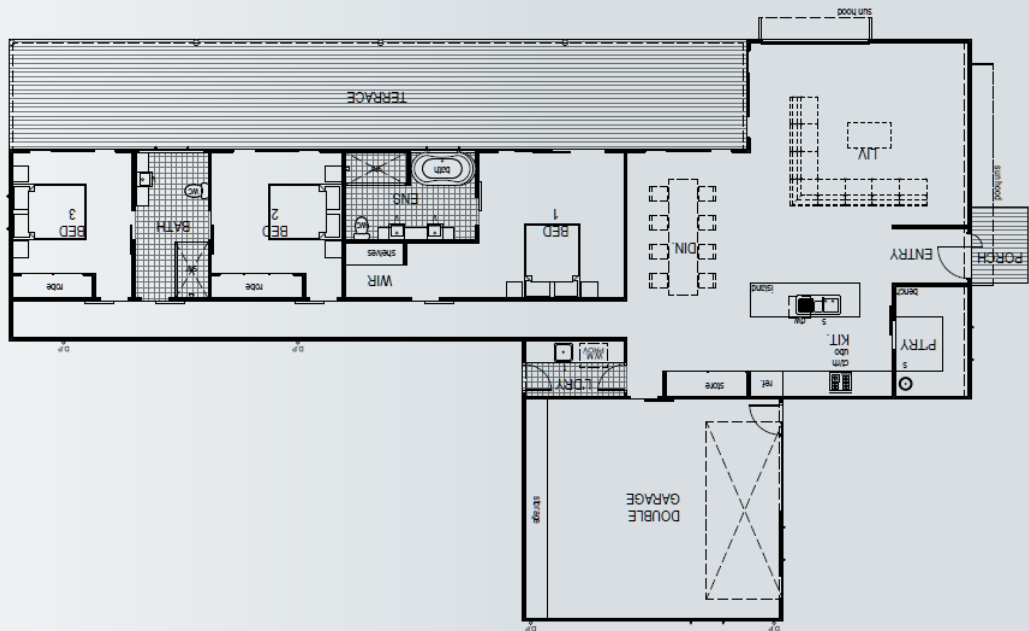
3 BEDROOM



Internal Living 220m²
Outdoor Living 61m²

House length 27.1m
House width 15.95m

3 2 2



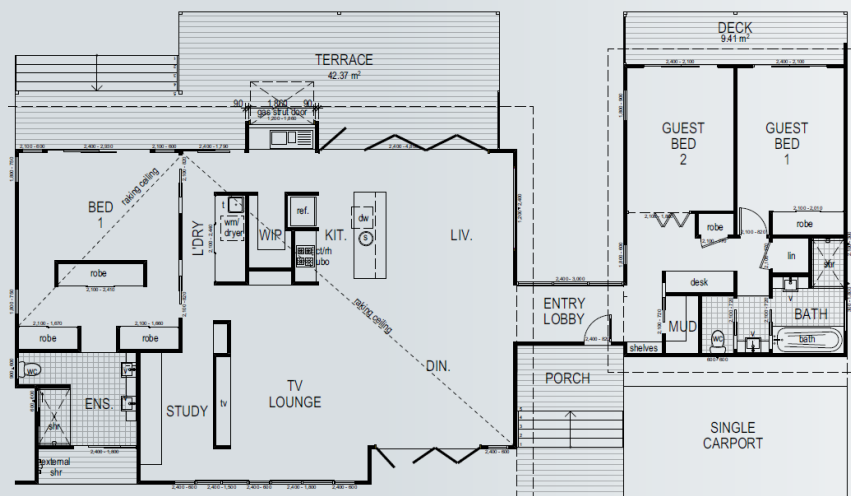
FERNANDO

238m²



Internal Living 183.5m²
Outdoor Living 54.5m²

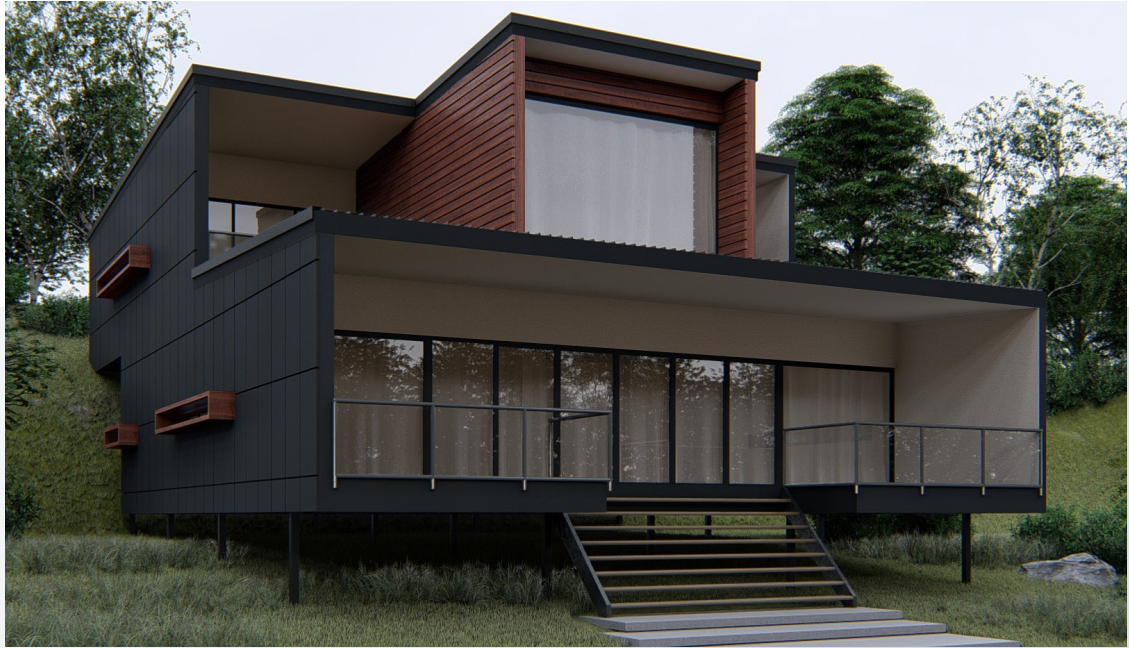
House length 23m
House width 13.1m



MARLOW

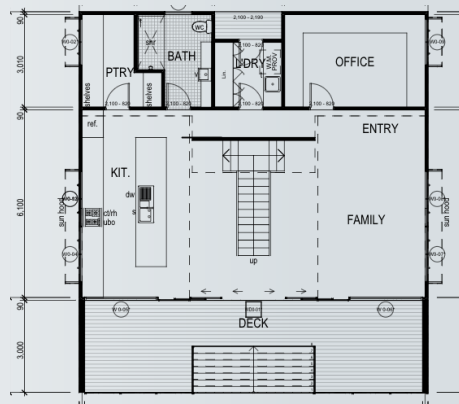
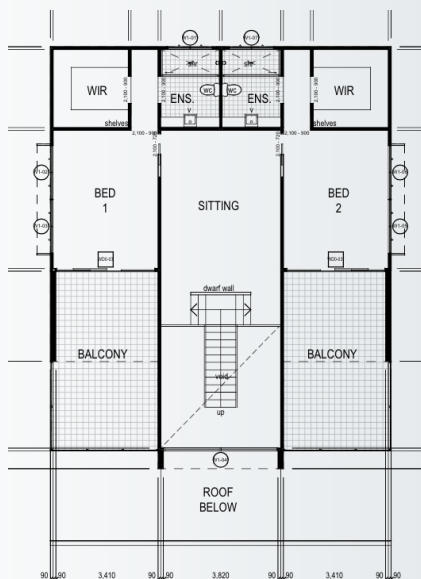
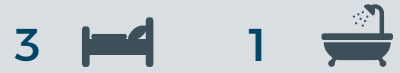
286m²

3 BEDROOM



Internal Living 214m²
Outdoor Living 72m²

House length 17m
House width 11.3m



With a beautiful void and oversized bay window, the Marlow is a unique design that has a great feel about it. The massive office on the ground floor and the unique double master bedrooms make this home perfect for entertaining.

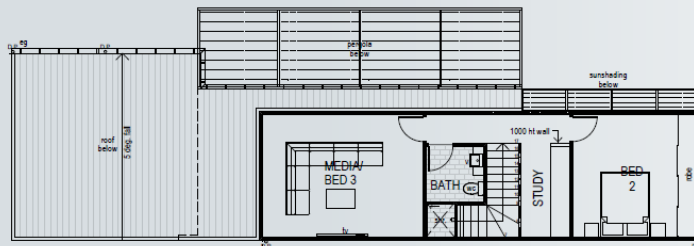
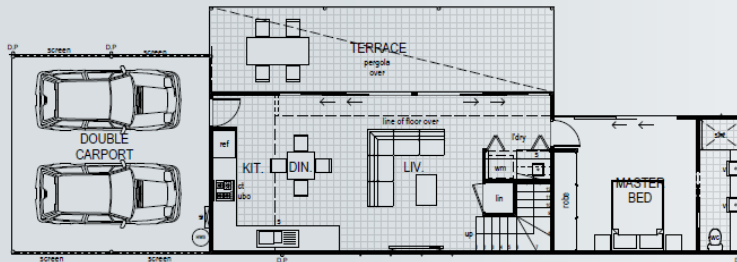
MIKA

126m²



Internal Living 126m²
Outdoor Living 58m²

House length 16.36m
House width 14.13m



MYA

232m²

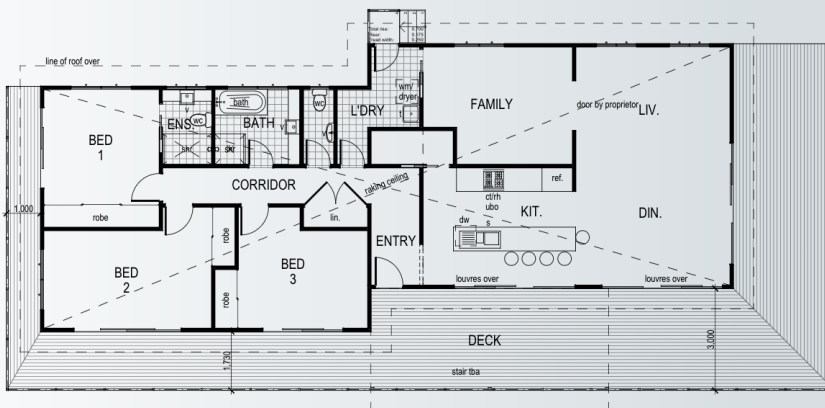
3 BEDROOM



Internal Living 147m²
Outdoor Living 85m²

House length 23.4m
House width 8.46m

3  2.5 



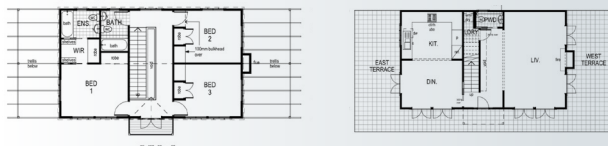
Fall in love with the Mya and its great communal design. The family room doubles as a 4th bedroom for holidaying guests plus the focus on balcony living gives you a holiday feel all year round. The skyline windows in this design add that touch of class that every home needs.

SOLIVEAU

209m²



3 2.5 | Internal Living 142m² House length 16.8m
Outdoor Living 66.5m² House width 8m

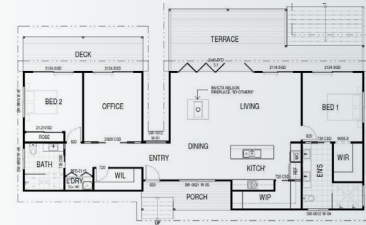


BARTON

189m²



3 2 | Internal Living 135.7m² House length 19.9m
Outdoor Living 54m² House width 11.7m



TAIERI

233m²



3 2 2 | Internal Living 189m² House length 21.85m
Outdoor Living 44m² House width 16.9m



YORK

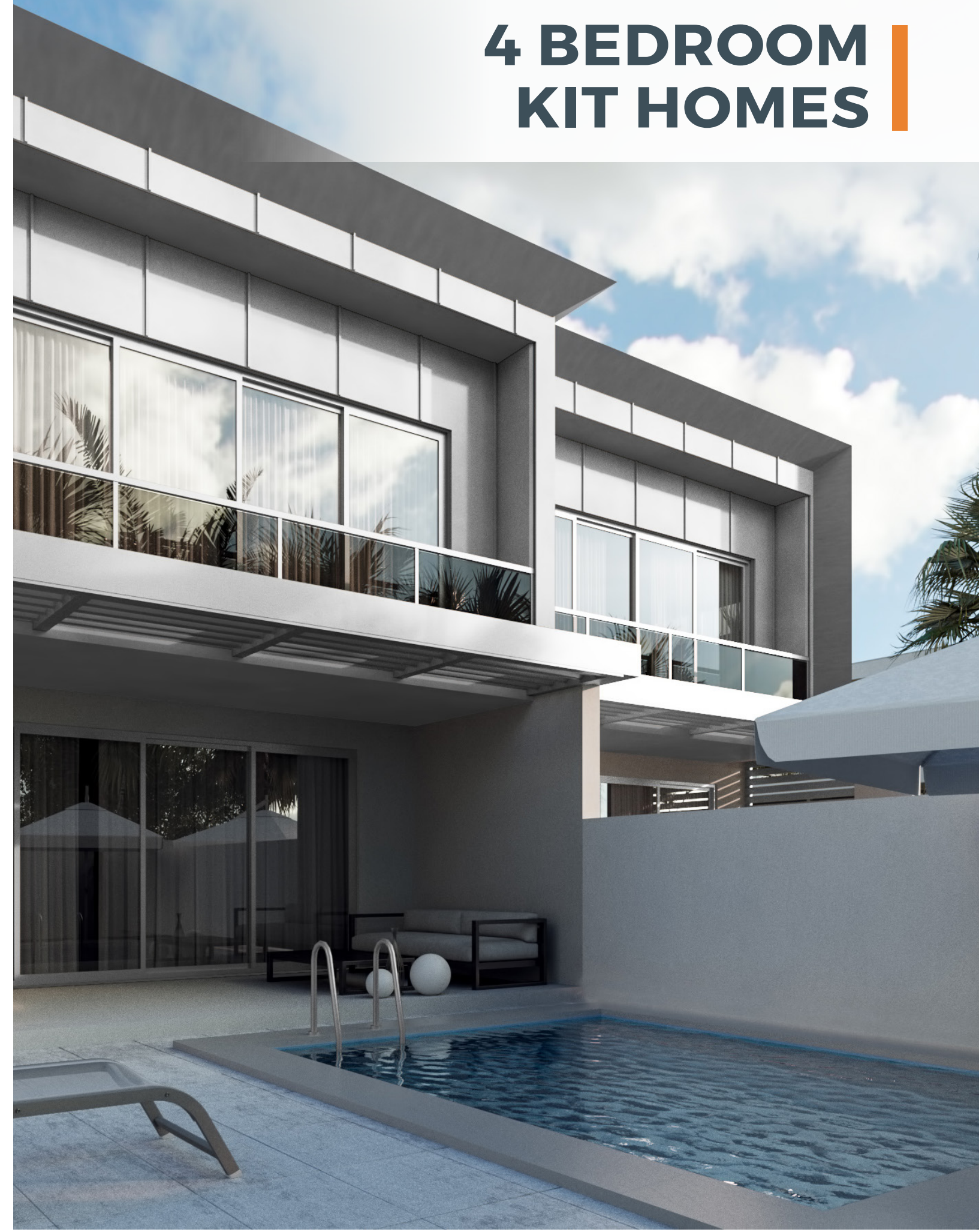
280m²



3 2 2 | Internal Living 280m² House length 14.65m
Outdoor Living 109m² House width 24.26m

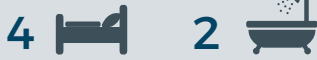


4 BEDROOM KIT HOMES



ACHLAN

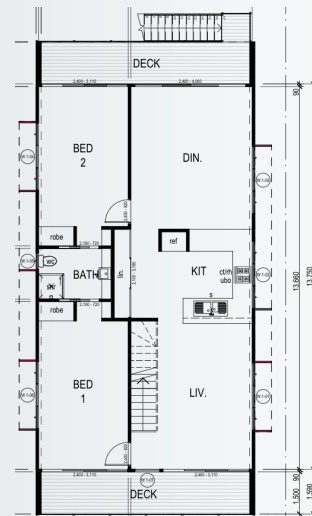
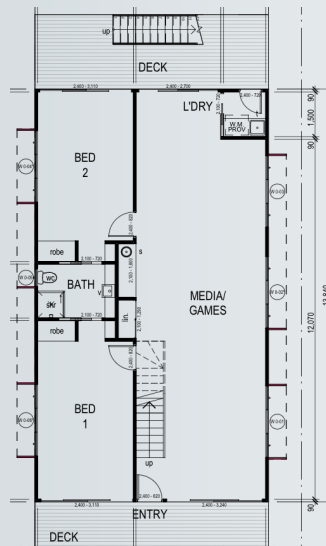
264m²



Internal Living 215.2m²
Outdoor Living 48.8m²

House length 16.8m
House width 7.8m

The Achlan is a contemporary two-story home designed to accommodate a mix of lifestyles. Suitable for families but also ideal for the corporate couple looking for the additional room for things like offices or entertainment zones. The clever design of upstairs and down mirror each other so that the use of the areas is flexible yet highly practical.



ALARA

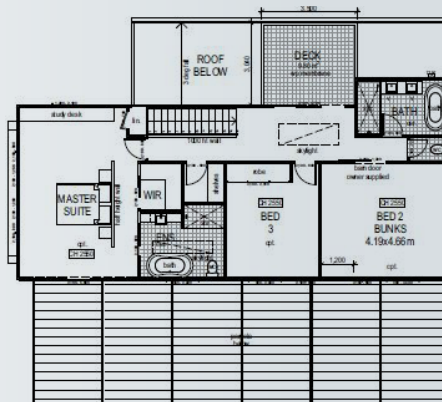
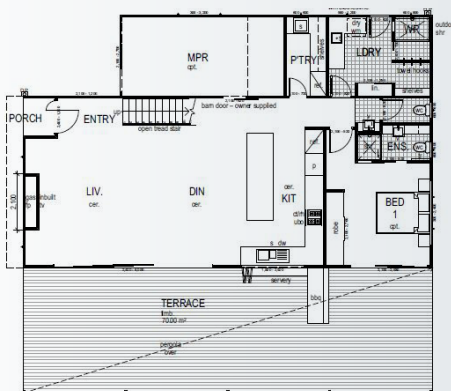
317m²

4 BEDROOM



Internal Living 237m²
Outdoor Living 80m²

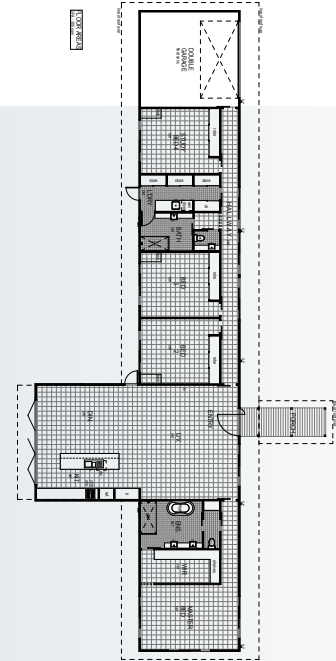
House length 15.4m
House width 14.2m



The Alara design is a fantastic example of modern day design with a slimline structure and a highly compact layout that fits the most living into the smallest possible format plan. The upstairs and downstairs areas flow effortlessly together via the modern straight up staircase.

HEATHCOTE

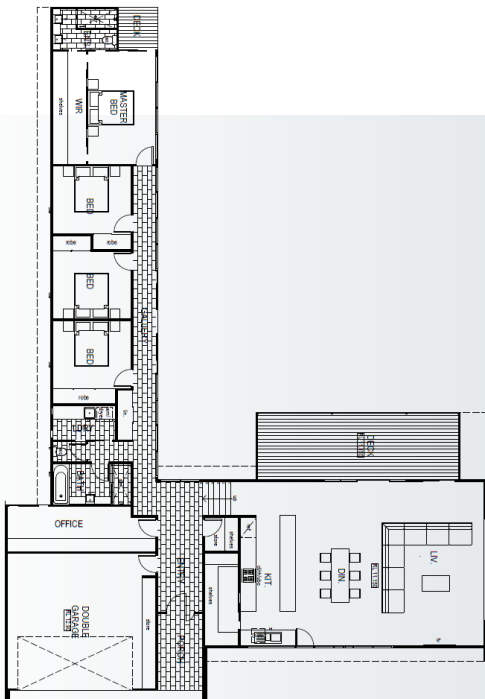
305m²



4 2 2 | Internal Living 293m² House length 9.3m
Outdoor Living 12m² House width 40.3m

ARROW

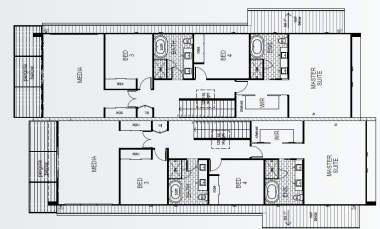
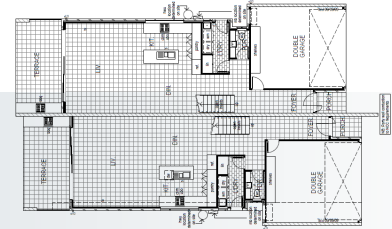
279m²



4 2 2 | Internal Living 253m² House length 31m
Outdoor Living 26m² House width 21m

BELLE

267m²



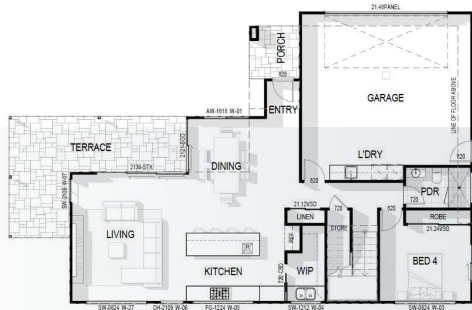
4 BEDROOM

4 2.5 2 | Internal Living 246m² House length 23.8 m
Outdoor Living 21m² House width 14.3m

* To be used as a guide only. Duplex design, dimensions and price based off one side of duplex.

SIREC

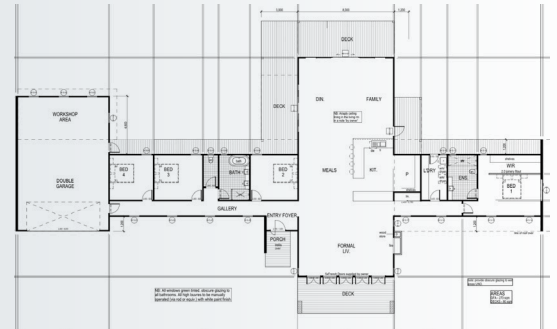
300m²



4 3.5 2 | Internal Living 261.3m² House length 18.4m
Outdoor Living 38.8m² House width 11.5m

BROOK

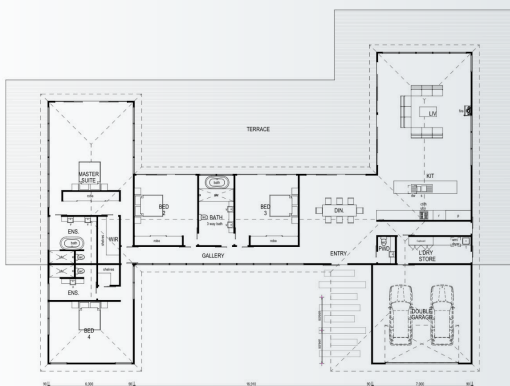
360m²



4 2 2 | Internal Living 270m² House length 18.2m
Outdoor Living 90m² House width 43.6m

CARDRONA

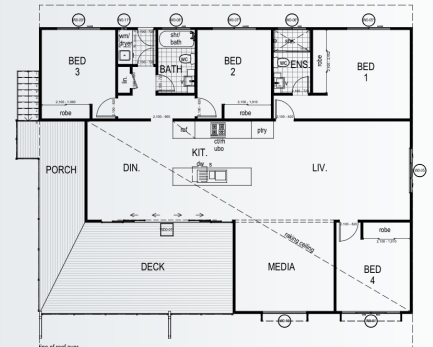
382m²



4 3 2 | Internal Living 382m² House length 22.3m
Outdoor Living 237m² House width 30.3m

CITADEL

175m²



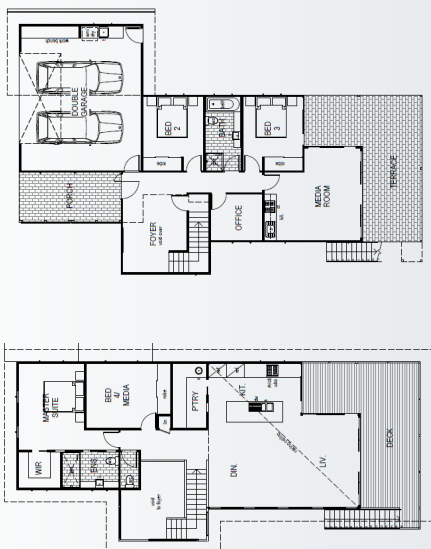
4 BEDROOM



Internal Living 132m² House length 11.5 m
Outdoor Living 43m² House width 15.1m

COOKS BEACH

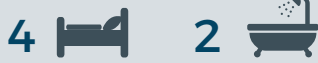
325m²



Internal Living 251m² House length 17.14m
Outdoor Living 74m² House width 12.5m

COOPER

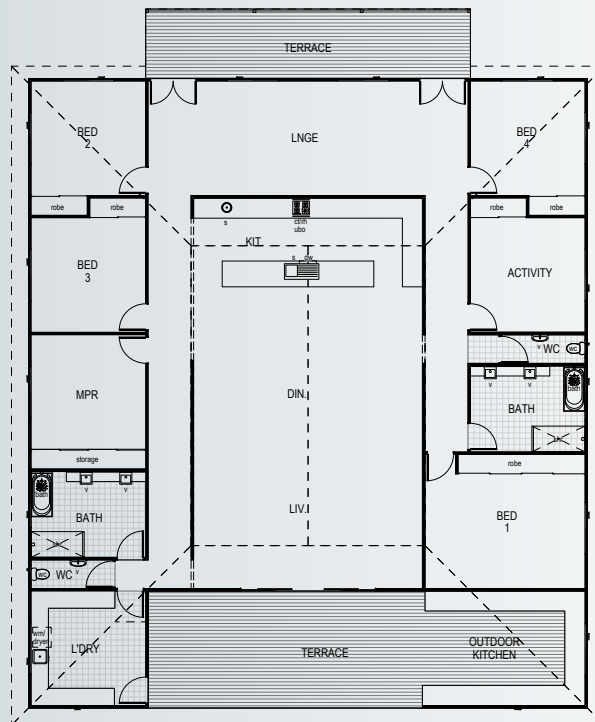
430m²



Internal Living 367m²
Outdoor Living 63m²

House length 22.1m
House width 19.5m

A classic and timeless design is exactly what you'll get when you opt for the Cooper. Deceptively large in size its grand 430m floor plate will afford you the room to move while doing it on a modest budget. With influences of Fiji and island-based homes, the Cooper speaks a world of adventure.



ARTICHOKE

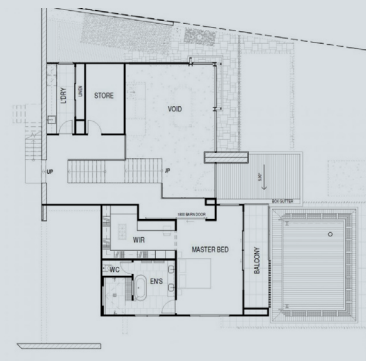
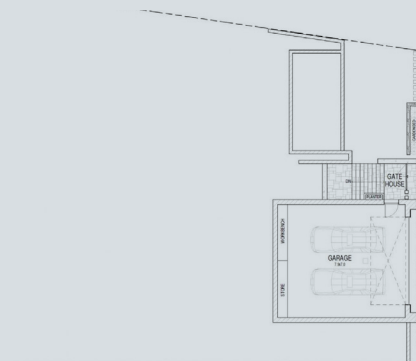
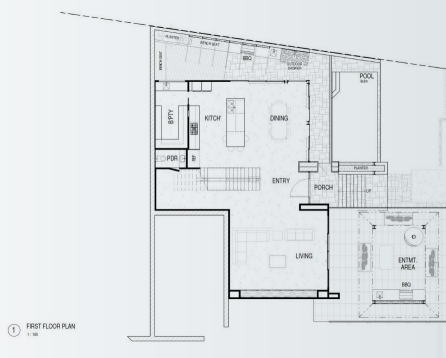
438m²

4 BEDROOM



Internal Living 423.8m²
Outdoor Living 14.6m²

House length 23m
House width 17.5m



CALIFORNIA

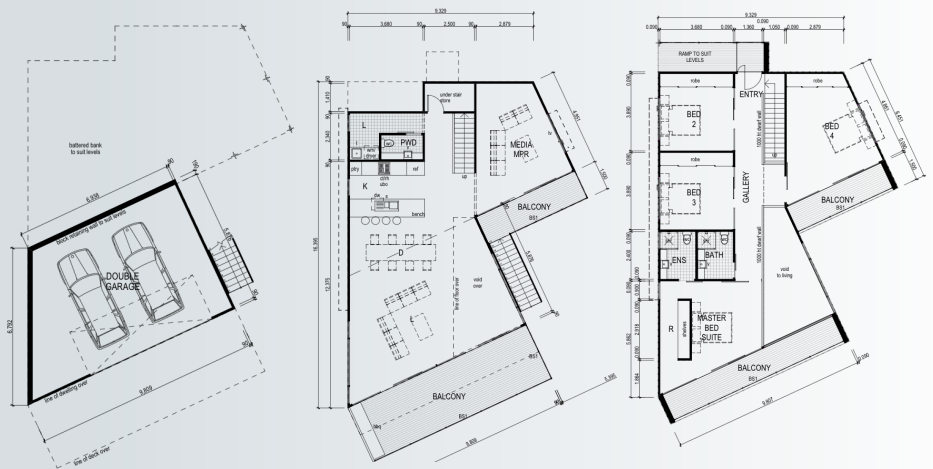
403m²



Internal Living 338m²
Outdoor Living 65m²

House length 16.3m
House width 11.8m

This is a staggering design that has been developed to capture the views while at the same time capturing the heart and soul of onlookers. Who could have imagined that Kit Homes would take such a giant leap forward with this remarkable work of art. 4 Bedrooms adorn this home and an internal access garage.



BEACHLAND

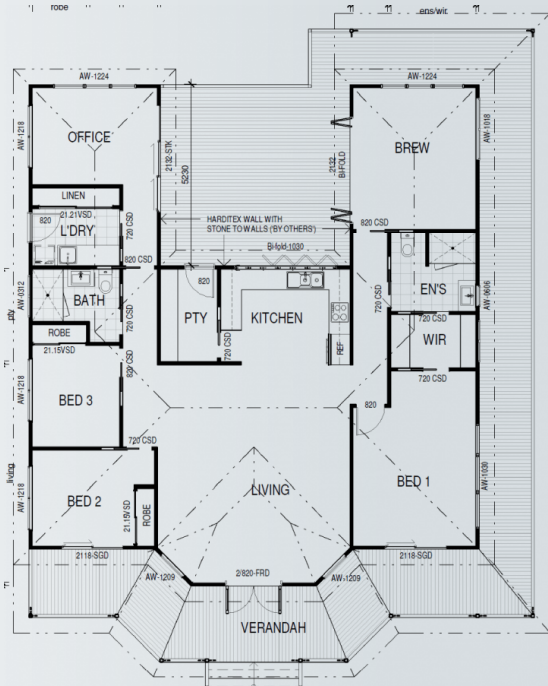
243m²

4 BEDROOM



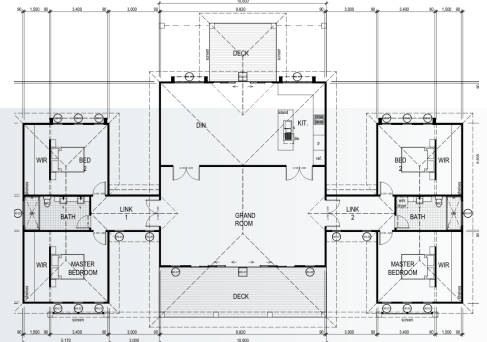
Internal Living 150.3m²
Outdoor Living 93.1m²

House length 13m
House width 18.25m



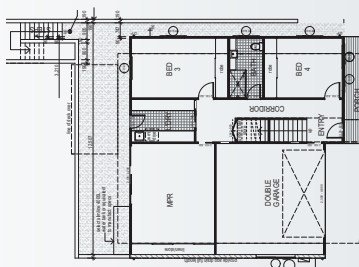
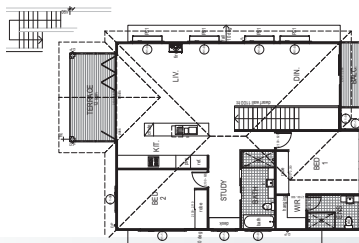
GRAND MOUNTAIN

280m²



4 2 | **Internal Living** 236m² **House length** 17.7 m
Outdoor Living 44m² **House width** 20.9m

Wow, what a roof line! And by adding some architectural treatments you have an affordable home that will sure to impress even the most discerning guest. The pavilion design style of this home provides an excellent first impression upon entering the grand room taking your breath away.



HIGHVIEW

289m²

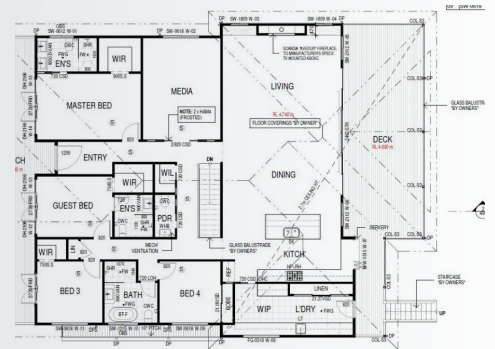


Hamptons meets Australian splendour. The Highview offers exactly what you would expect from a high set Queenslander with the modern twist and styling of New York's number one tourist spot. This is a flexible layout that can be tailored to your every desire.

4 3 2 | **Internal Living** 256m² **House length** 12.7m
Outdoor Living 33m² **House width** 11.7m

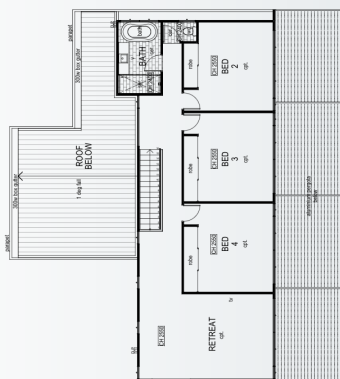
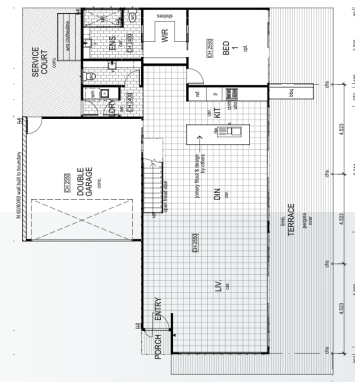
BEACHMERE

348m²



4 BEDROOM

4 3.5 2 Internal Living 221m² House length 21.4m
Outdoor Living 127.6m² House width 15.3m



HURST

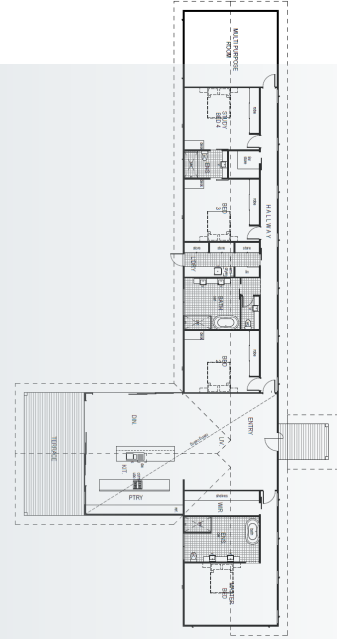
344m²



4 2.5 2 Internal Living 278m² House length 17.5m
Outdoor Living 66m² House width 14.6m

NORFOLK

357m²



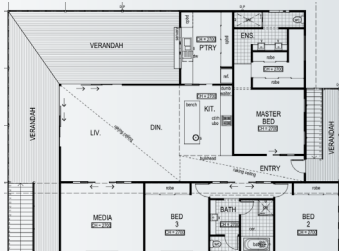
4 3 | Internal Living 314m² House length 12.9 m
Outdoor Living 43m² House width 40.9m

MACLEAY

265m²



4 2 | Internal Living 181.3m² House length 16.36m
Outdoor Living 83.7m² House width 14.13m



PANANIA

244m²



4 2.5 | Internal Living 199m² House length 23.1m
Outdoor Living 45m² House width 9.0m



KILCUNDA

223m²



4 BEDROOM

4 2.5

Internal Living 187m² House length 20m
Outdoor Living 36.4m² House width 10.2m

RAVENWOOD

300m²



4 3.5 2

Internal Living 259.6m² House length 25.7m
Outdoor Living 41.3m² House width 13.5m

RHANI

509m²

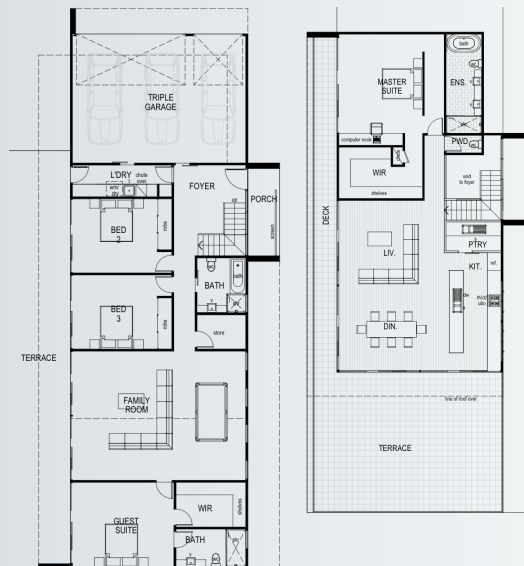


4 3.5 3

Internal Living 354m²
Outdoor Living 155m²

House length 26.43m
House width 11.35m

The Rhani is a stunning work of art that simply won't let your imagination down. The 'S' like the design of the facade together with the huge emphasis on glazing makes you want to spend every waking hour at home. Your life will be like living in a hotel.



PLATINUM

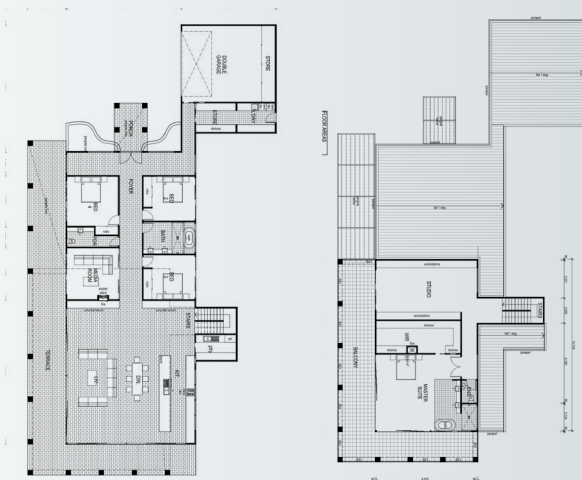
638m²

4 BEDROOM



Internal Living 463m²
Outdoor Living 175m²

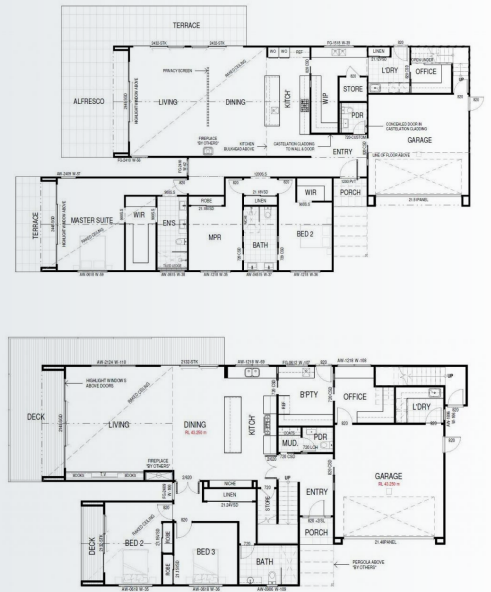
House length 33.02m
House width 19.56m



When silver and gold simply won't cut it, you'll have no choice but to build yourself a palace and you'll set your heart on the eloquent Platinum Kit Home. Designed for ultimate luxury, the Platinum offers what others in our range simply do not. You can almost play football in the master bedroom and the laundry is big enough to make us all want to do the washing.

RAWENE

347m²



4 3.5 2 | Internal Living 319.7m² House length 24.6m
Outdoor Living 28m² House width 11.8m

PINE

278m²



4 2.5 2 | Internal Living 278m² House length 14.69m
Outdoor Living 66m² House width 17.5m

RIVER FRONT

290m²



4 2.5 2

Internal Living 273m² House length 31.55m
Outdoor Living 17m² House width 7.94m

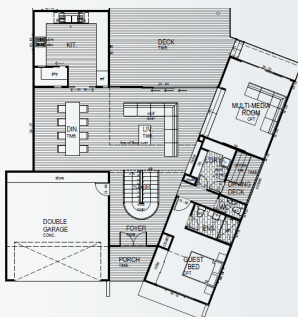
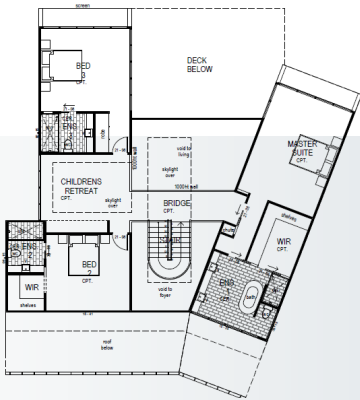


This high set slimline home is ideal for city blocks or for those who love the long lines of urban design. With a media room and entertainment on the ground floor and bedrooms on the upper level, the Riverfront is something very special.

4 BEDROOM

TAJ

421m²



4 4.5 2

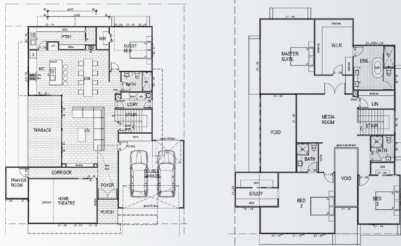
Internal Living 352m² House length 18.2m
Outdoor Living 69m² House width 15.5m

TEMPLE

439m²



4 4 2 | Internal Living 414m² House length 18.12m
Outdoor Living 25m² House width 16.6m

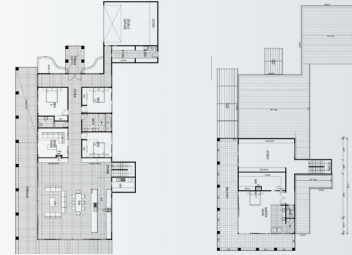


WESTSIDE

486m²



4 2.5 2 | Internal Living 336m² House length 38.7m
Outdoor Living 150m² House width 13.4m

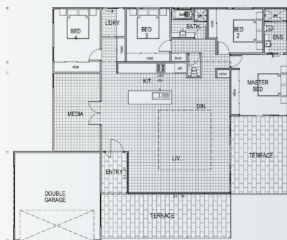


WALLACE

229m²



4 2.5 2 | Internal Living 213m² House length 15.89m
Outdoor Living 16m² House width 19m

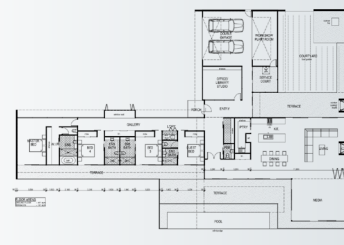


WATERFALL

582m²



4 4.5 2 | Internal Living 401m² House length 25.8m
Outdoor Living 181m² House width 40.48m



VILLEA

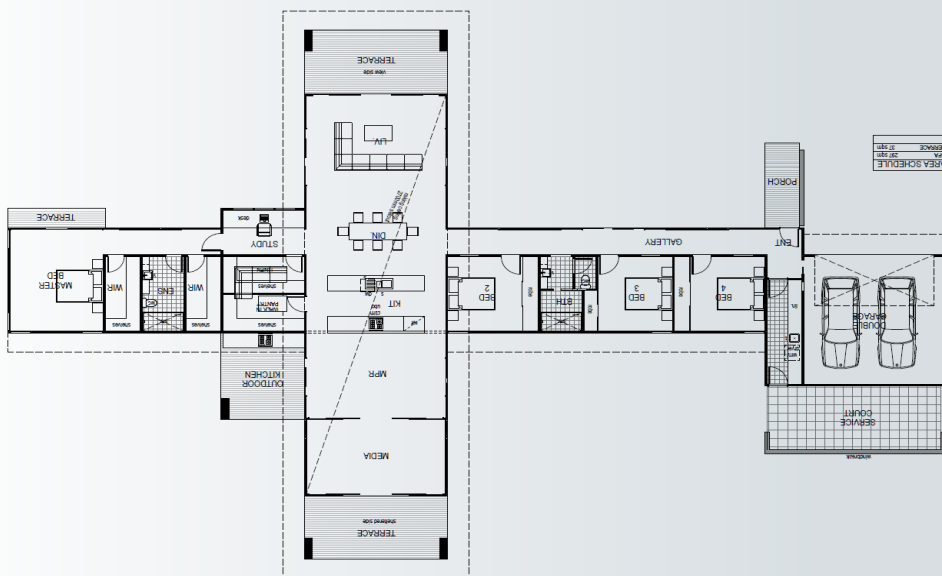
334m²

4 BEDROOM



Internal Living 297m²
Outdoor Living 37m²

House length 24.96m
House width 40.4m



The Cross as it is sometimes called provides a unique view of every aspect of the home. The amazing hallways, galley island kitchen and outdoor entertaining sets this home apart in a league of its own. 4 bedrooms and two bathrooms with 2 car parks.

5+ BEDROOM KIT HOMES



DUCHESS

460m²

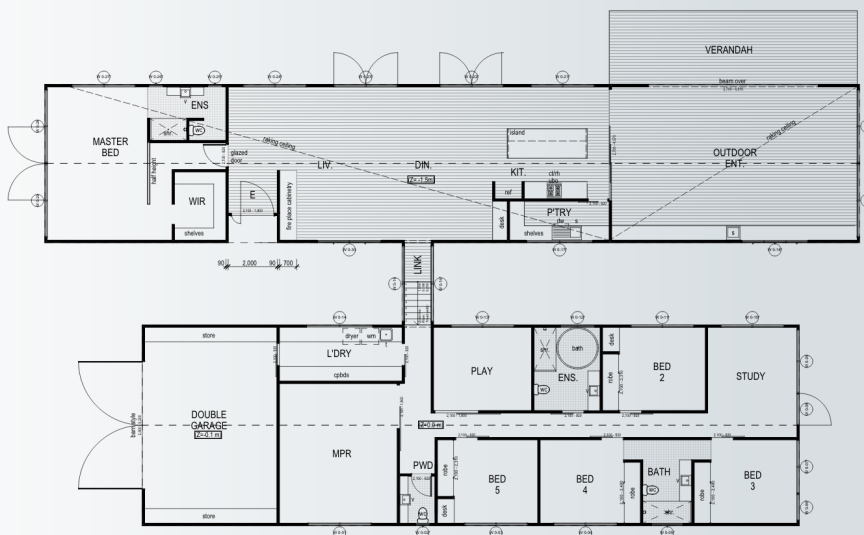
5+ BEDROOM



Internal Living 430m²
Outdoor Living 30m²

House length 33.1 m
House width 17.7m

6 3.5 2



Bring on the winter wonderland or country estate because the Duchess is by far one of the best designs in the Imagine Kit Homes stable of residences. The down to earth styling contrasts with the amazing use of glass and aluminium. With a roofline akin to that of NZ country homes, you end up with a modern yet somehow timeless design of integrity.

KENSINGTON

539m²



5 3.5 2

Internal Living 424.1m² House length 24.4m
Outdoor Living 114.9m² House width 30.4m



AIA

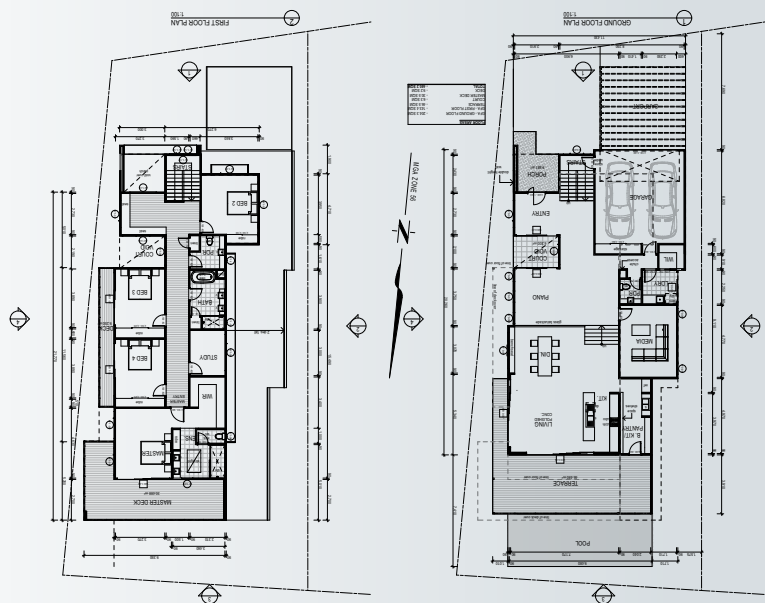
441m²

5+ BEDROOM



Internal Living 348.5m²
Outdoor Living 92.5m²

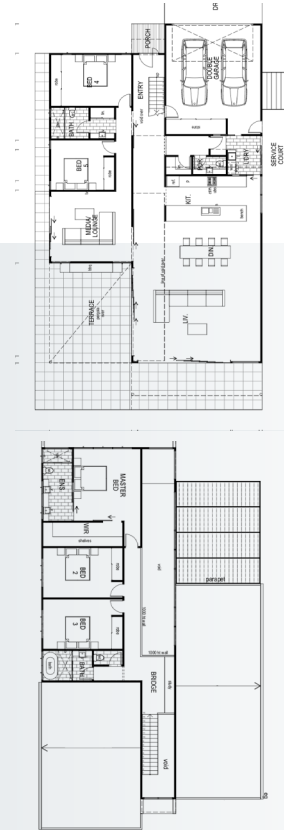
House length 23.4 m
House width 8.46m



The Aia is a superb example of architectural brilliance. This four bedroom masterpiece offers compact living at it's best with 4 bedrooms servicing a split level living and entertaining zone. The double car garage and walk-in linen are suitably portioned to allow for practical living and the upstairs office area and oversized master suite provides for the luxuries in life.

MANUKAU

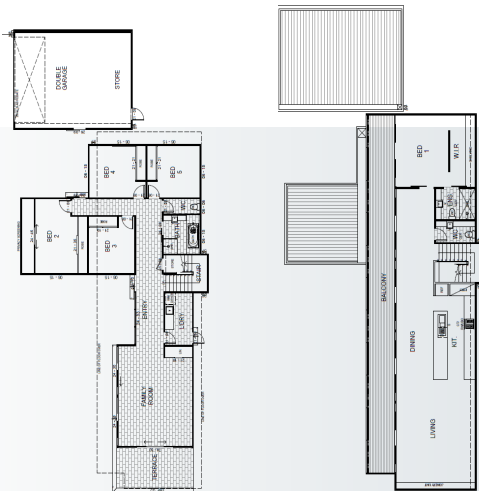
478m²



5 3.5 2 | Internal Living 383m² House length 23.7m
Outdoor Living 95m² House width 13.5m

MUDGEE

621m²

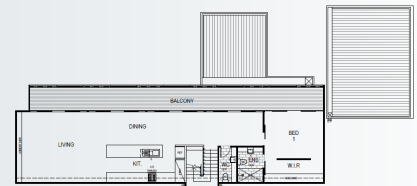
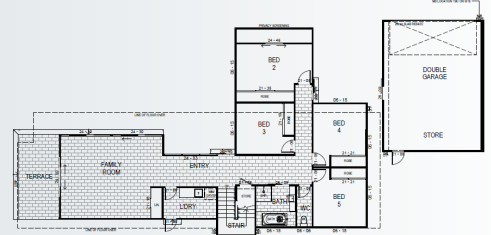


If you love your cars, can't want for a big enough master bedroom and love pantry space, then the Mudgee is simply perfect for you. Sit in the spa and enjoy your new home masterpiece.

5 2.5 4 | Internal Living 527m² House length 18m
Outdoor Living 94m² House width 9.1m

PALM BEACH

350m²

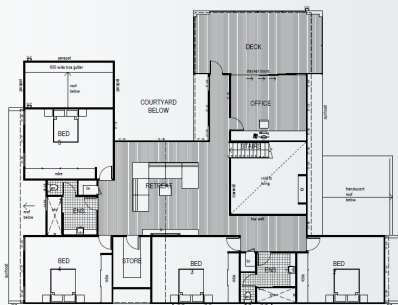
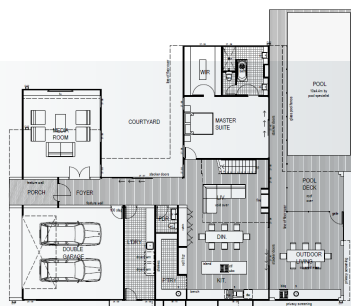


5 2 2 | Internal Living 256m² House length 12.56m
Outdoor Living 94m² House width 22.03m

5+ BEDROOM

VISION

314m²

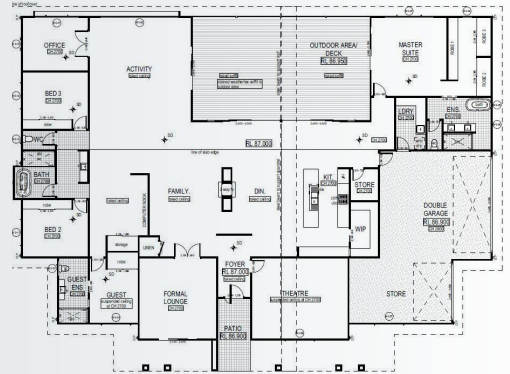


5 3.5 2 | Internal Living 253m² House length 23m
Outdoor Living 61m² House width 18.44m

5+ BEDROOM

EPIC

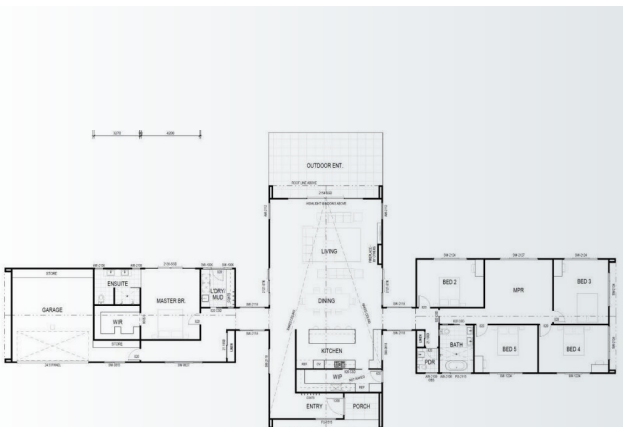
545m²



5 3 2 | Internal Living 467m² House length 29.4m
Outdoor Living 78.9m² House width 19.8m

WAMBOIN

339m²



5 2.5 2 | Internal Living 355.3m² House length 43.8m
Outdoor Living 44.1m² House width 17.3m

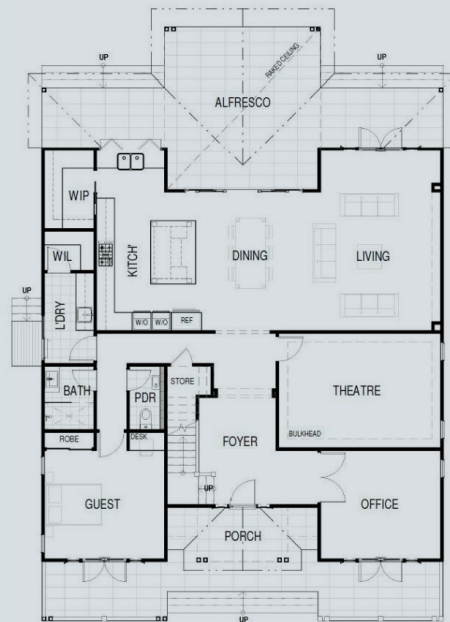
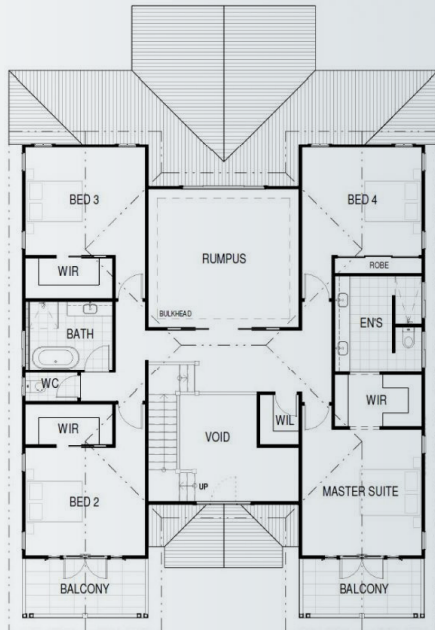
HAMPTONS

427m²

5+ BEDROOM



Internal Living 333.7m² House length 15.7m
Outdoor Living 93.3m² House width 13.3m



CAYMAN

587m²

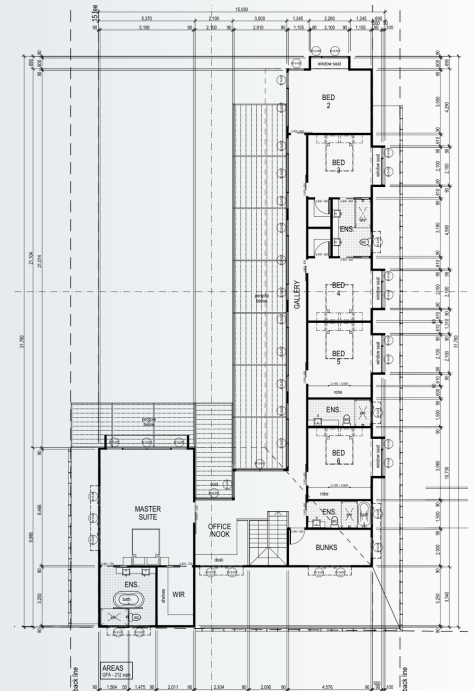
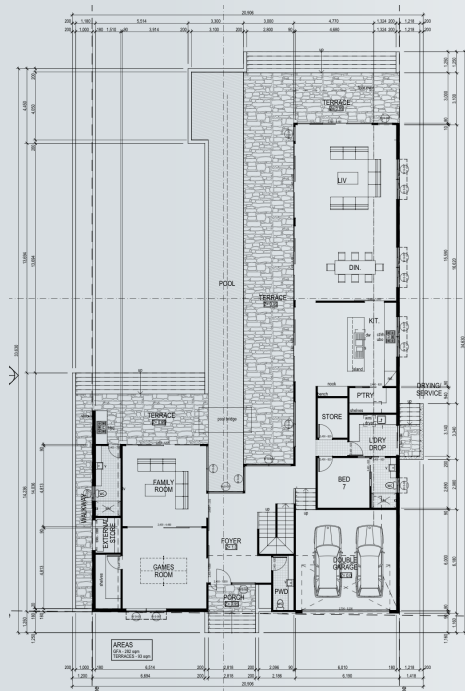



7 6.5 2

Internal Living 494m²
Outdoor Living 93m²

House length 34.6 m
House width 20.9m

Like something out of a west Hollywood film, this modern masterpiece offers a huge accommodation of 7 bedrooms and 6.5 bathrooms. A massive family mansion that has been designed around a central outdoor living area which would be the perfect position for a pool or west facing winter lawn.





**OUR HOUSES ARE
DESIGNED TO
MAXIMISE THE USE
OF THE NATURAL
ENVIRONMENT**

SCHLOSS

689m²



6 6.5 2

Internal Living 564.6m² **House length** 35.6m
Outdoor Living 124.4m² **House width** 26.1m



MACCA

669m²

5+ BEDROOM



Internal Living 599.7m²
Outdoor Living 69.9m²

House length 51.7m
House width 29.5m

7 5 6



MULTI DWELLING KIT HOMES



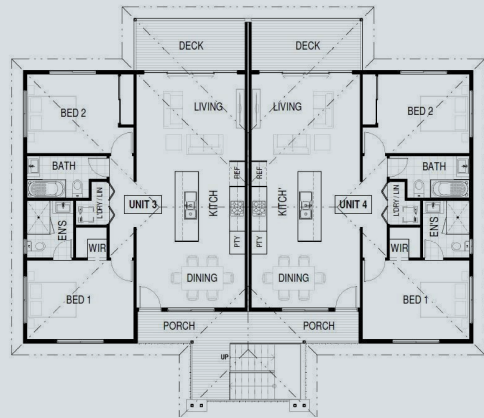
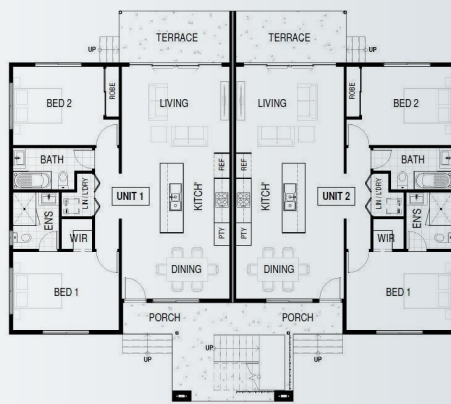
ADELE

399m²

MULTI DWELLING



Multi-apartment development, each featuring:



A duplex featuring four 2 bedroom units with a classic, desirable appeal. We are able to custom design multi-dwelling kits to your specific requirements, ask us for details.

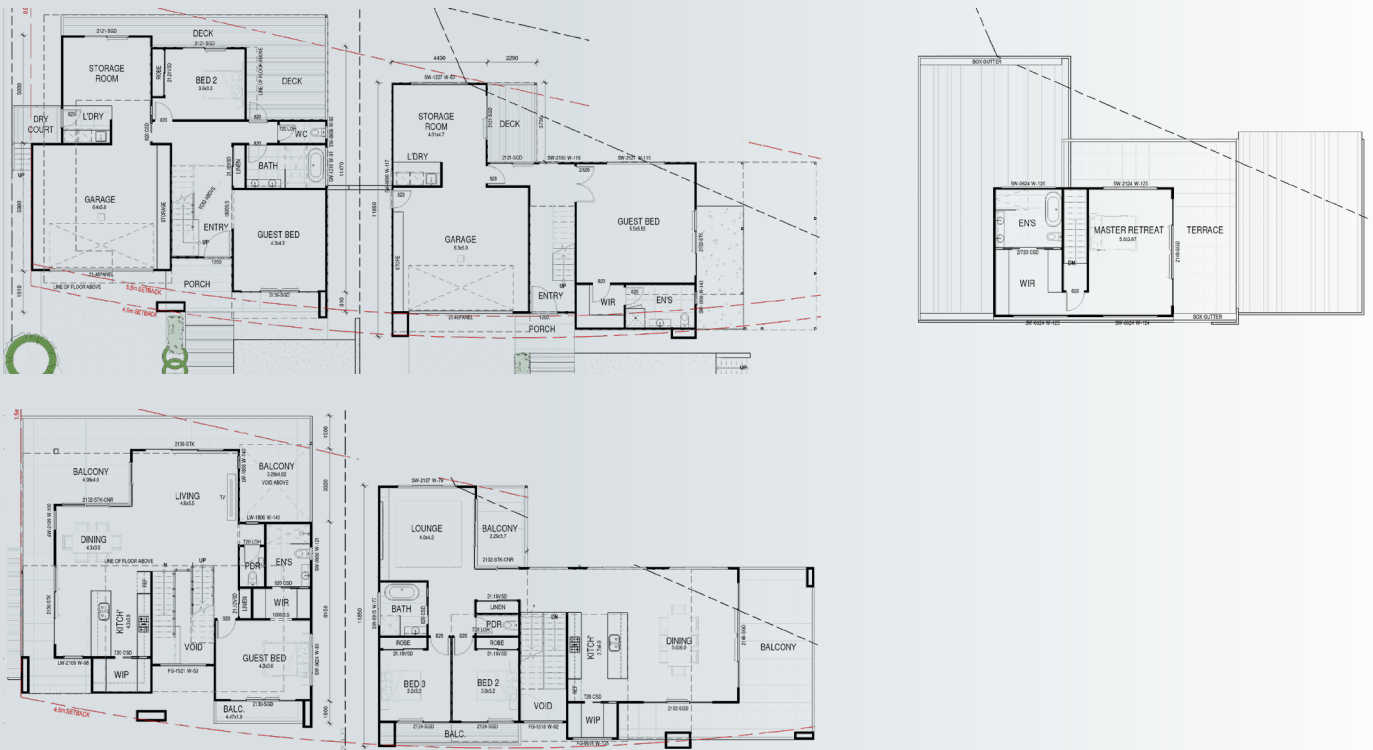
VISTA DRIVE MULTI RESIDENCE PROJECT



NOT TO SCALE - COLOURS ARE INDICATIVE ONLY. SUBJECT TO CHANGE



Two dwellings, with differing floorplans designed for a specific site & requirements.



INVERLOCH MULTI TOWNHOUSE PROJECT

MULTI DWELLING



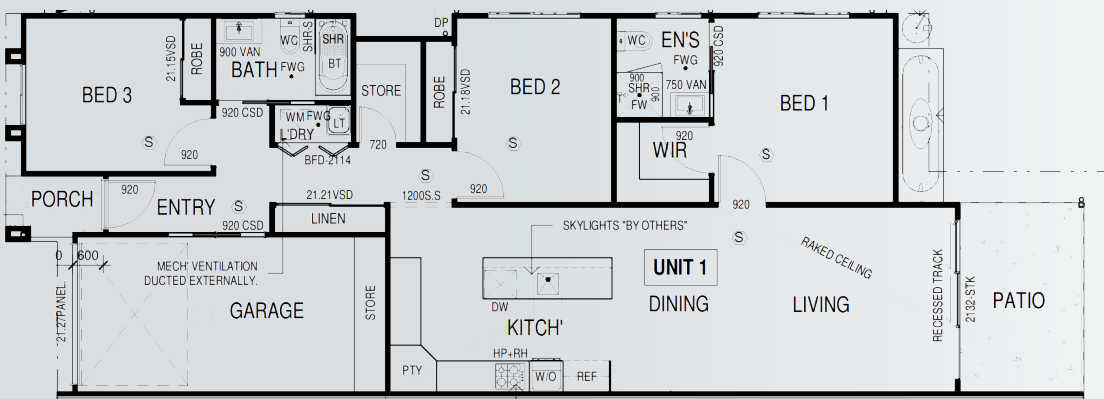
Multi-townhouse development, each featuring:



BOSTON PROJECT HOME



Design for estate and multi-lot developers,
Boston is a flexible and cost effective design.



imagine
KIT HOMES



The future of owner building.

BUILD YOUR DREAM HOME

WITH IMAGINE KIT HOMES & SAVE UP TO 30% ON BUILD COSTS.

READY TO TAKE THE NEXT STEP?

Talk with one of our professional local planning & building consultants *or start by getting a quote online, or ask us about our custom plans from just \$2950.*

CONTACT US

AUSTRALIA (HEAD OFFICE)

Free Call: 1800 548 723
Email: enquiries@imaginekithomes.com.au
Address: 3968 Pacific Highway
Loganholme QLD 4129
Web: imaginekithomes.com.au

NEW ZEALAND

Free Call: 0800 483 864
Email: nz@imaginekithomes.com.au
Web: imaginekithomes.co.nz

UNITED STATES

Free Call: 1800 493 0723
Email: info@imaginekithomes.com.au
Web: imaginekithomes.com

INTERNATIONAL ENQUIRIES

Free Call: +61 1800 548 723
Email: enquiries@imaginekithomes.com.au
Web: imaginekithomes.com.au

INTERNATIONAL FREE CALL

+61 1800 548 723

(Australian Eastern Time Zone)

IMAGINEKITHOMES.COM.AU

Indicated sizes are approximate.