

**Metalier**International

What you need  
to know about  
choosing Metalier



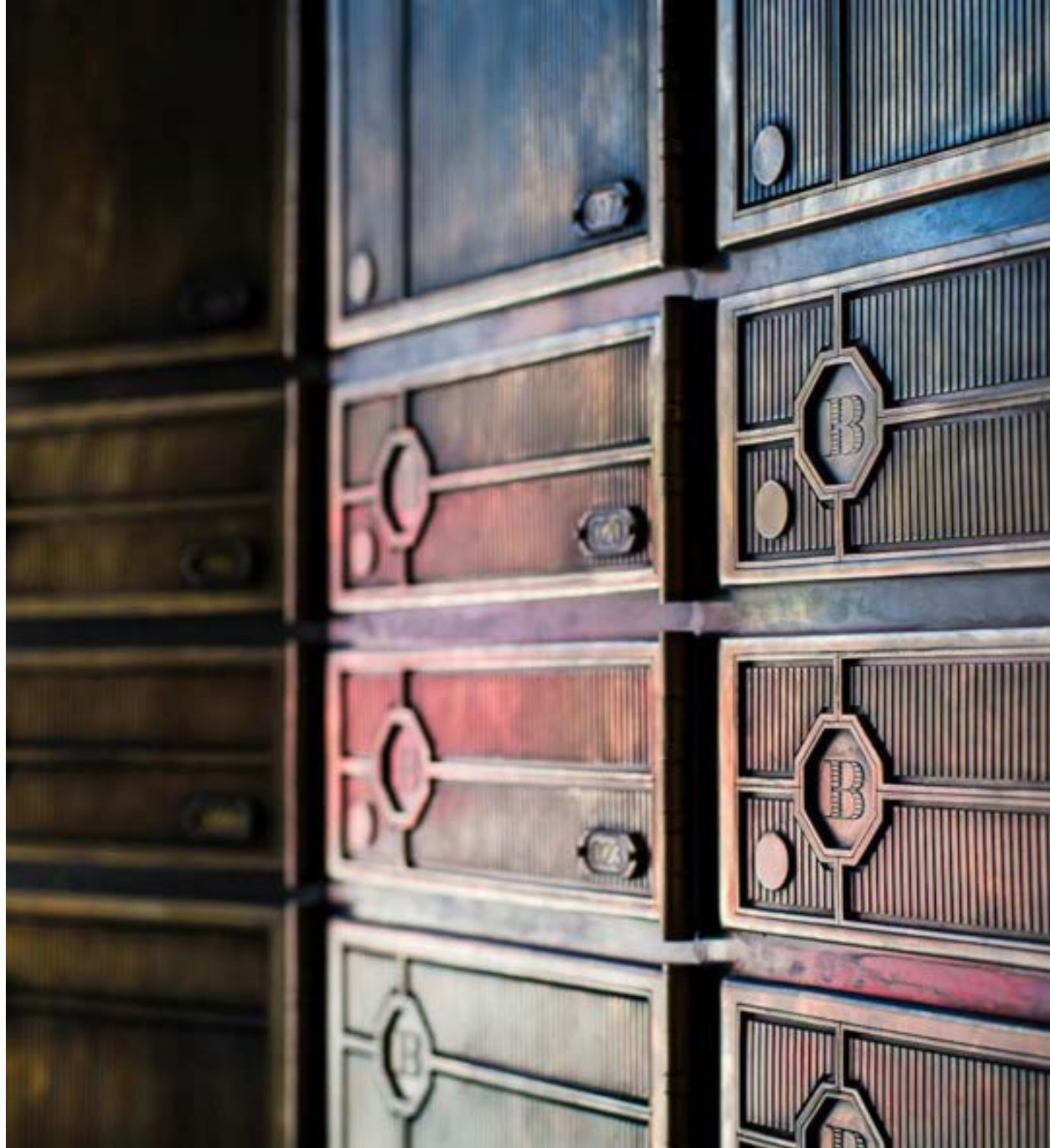
# What is Metalier?

A real metal coating

It's like paint but it's so much more than a paint.

It's genuine metal powders in a proprietary liquid.

When finished it's 95% metal.



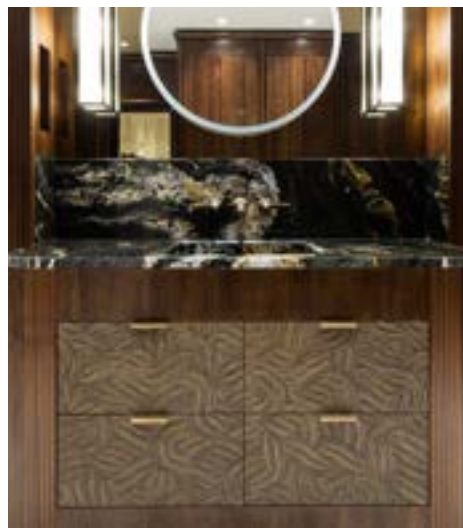


## Where can I use Metalier?

Use Metalier everywhere you wish to use metal.

- front entrance doors
- kitchen cupboard doors
- splash backs
- range hoods
- islands
- cabinets
- credenzas
- hall tables
- tv screen covers
- fireplace surrounds
- reception desks
- wall and ceiling panels

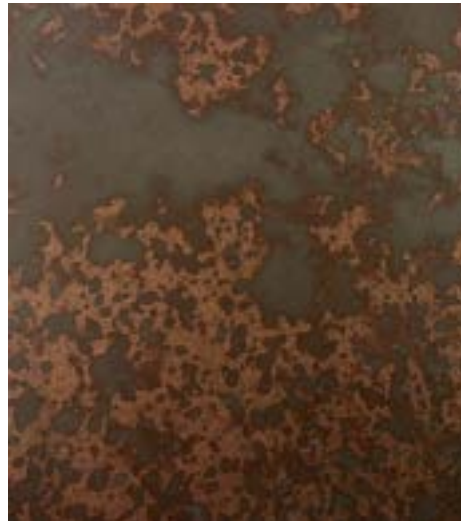
And there are bound to be places we haven't thought of yet.



# Environmentally Responsible

Metalier Water-based Metal Coat is an environmentally responsible choice as it contains no volatile organic compounds (VOCs), benefiting both the environment and those using the system.

This not only reduces air pollution but also ensures compliance with environmental regulations.





## Health- Conscious

Metalier Water-based Metal Coat is safer for workers' health due to their reduced presence of toxic fumes and chemicals.

This contributes to improved indoor air quality and a safer workplace.



# Regulatory Compliance

Many regions have stringent regulations governing VOC emissions and the use of hazardous materials.

Employing water-based spray metal systems ensures businesses adhere to these regulations, avoiding potential fines or penalties.





## Why should I choose Metalier?

For bespoke exciting finishes that will put wow into your design.

It will be unique to you.

It's sustainable and durable.



















# THE STUDIO

INTERIOR DESIGN & INNOVATION

Hawed's

































THE SERIES  
OLDMAN AND FREEMAN  
GARY  
THE  
THE  
THE

ODEON

LONDON

BATMAN  
THE  
THE

MEZZANINE

THE  
THE

THE  
THE

# Metalier Signature Metal Collection



BRASS



CLASSIC GOLD ★



CHAMPAGNE GOLD ★



BRONZE



ROSE GOLD ★



COPPER



GUNMETAL BRONZE ★



NICKEL SILVER



ALUMINIUM



GUNMETAL SILVER ★



GUNMETAL



IRON

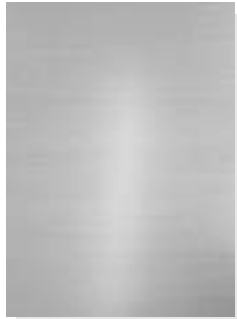
★ Mixed metal combinations created by blending core metal powders together.

We have shown some possible blends. Different blending ratios will create more colours. Your distributor may also stock additional metals including Black Copper, Smoky Bronze, Chocolate Bronze, Manganese and Zinc. Contact your distributor to check availability.

# Metalier Signature Finishes Collection



**01\_AL\_BO \***  
ALUMINIUM BLUE OILED



**02\_AL\_BR**  
ALUMINIUM BRUSHED



**03\_BR\_WN**  
BRASS WINDSOR



**04\_BR\_NB \***  
BRASS NEBULA



**05\_BZ\_DM**  
BRONZE DARK MOODY



**06\_BZ\_LN**  
BRONZE LINEAR



**07\_CO\_VD**  
COPPER VERDIGRIS



**08\_CO\_WA**  
COPPER WATER AGED



**09\_GM\_LT**  
GUNMETAL LIGHT TEXTURE



**10\_IR\_LA**  
IRON LIGHT AGED



**11\_IR\_RT \***  
IRON RUST



**12\_NS\_RW**  
NICKEL SILVER RAW



**13\_NS\_WO**  
NICKEL SILVER WOVEN



**14\_CG\_SM**  
CLASSIC GOLD SMOOTH



**15\_CM\_RW**  
CHAMPAGNE GOLD RAW



**16\_GB\_LN**  
GUNMETAL BRONZE LINEAR



**17\_GS\_SM**  
GUNMETAL SILVER SMOOTH



**18\_RG\_SM**  
ROSE GOLD SMOOTH

\* These finishes are only available in the metal shown.

Additional finishes and samples of them can be obtained from your chosen applicator.

# Can I get samples?

Contact us at [office@metaliercoatings.com](mailto:office@metaliercoatings.com) for samples of our standard range.

Our standard range will illustrate the various options and versatility of finishes that can be achieved with Metalier.

For more custom or bespoke finishes email us your ideas and we can have one of our coaters work with you to create the look you are wanting to achieve.

A design fee will be payable for our custom samples which is rebated when the job proceeds.







## What does it cost?

Metalier is priced per square metre and on a job by job basis. Prices will vary depending upon the finish and the metal chosen.

Contact us with your details, dimensions and design specifications and we can provide estimate pricing and/or put you in touch with one of our trained applicators to work directly with you.

# How do I care for my Metalier finish?

Metalier is very easy to care for. It can be wiped clean with a damp micro-fibre cloth. A mixture of ordinary household detergent heavily diluted will help with stubborn dirt.





## What is the process of applying Metalier?

The Metalier system is an application of metal powders mixed with a liquid that is applied to a surface. The liquid cures which takes between 4 to 24 hours.

The film layer that forms during curing is sanded away to expose the metal. Then the finishing magic takes place. Finally, a clear coat is applied that protects the metal, delays oxidization and provides a surface that's easy to clean.

The whole process is hand-crafted. Each piece is unique.

# How long does the process take?

The process involves at least an base-coat, a metal-coat and a clear-coat with preparation sanding, undercoat sanding and top coat sanding prior to application of the clear coat.

The 3 coatings require 3 days and, if it is a double-sided piece, it will take 6 days. So, it is very much longer than a paint finish, which is what you would expect.

Our lead time varies from job to job however we advise to allow approximately 20-25 business days to a longer period for large jobs.

When you place your order, we will be able to give you a lead time.

If you have more questions please don't hesitate to ask.

Phone: +64 (0) 9 376 7099  
Email: [office@metaciercoatings.com](mailto:office@metaciercoatings.com)





# Thank you!

We're looking forward to  
working with you

**Metalier International**

Ironbank Building  
305/150 Karangahape Road  
Auckland 1010  
New Zealand

T: +64 (0) 9 376 7099

E: [office@metalcoatings.com](mailto:office@metalcoatings.com)

W: [metaliercoatings.com](http://metaliercoatings.com)