

# ACMF

The building system experts.  
Better looking.  
Longer lasting.

architectural cladding | screens and louvres | balustrades  
roofing | flashings | fire rated joinery | maintenance



# CONTENTS

**WHO WE ARE** 3

**WHAT WE DO** 6

- Cladding
- Louvres & Screens
- Balustrades
- Roofing
- Flashings
- Fire Rated Joinery
- In-house D&E and fabrication
- Maintenance

**CLADDING** 10

- AliClad
- AliCeiling
- AliSoffit
- AliScreen
- Alucolux
- Alucobond Plus
- Alucore (closed cell)
- Equitone Fibre Cement
- Innowood
- Terreal
- Frontek
- Cupaclad
- Cedral

**LOUVRES** 26

- Aero
- Quadro
- Mechanical
- Operable

**ROOFING** 28

**INTERIORS** 32





# WHO WE ARE

RESIDENTIAL & COMMERCIAL NATIONWIDE

## **AT ACMF WE HELP YOU ACHIEVE BEAUTIFUL AND TECHNICALLY SUPERIOR EXTERIORS THAT STAND THE TEST OF TIME.**

ACMF are exterior experts, looking after the whole building envelope – cladding, flashings, louvres and screens, balustrades, roofing and fire-rated aluminium joinery – from initial design and product choices all the way through to installation. Our focus is on high-end residential and light commercial projects, and we maintain buildings over their lifetime.

We look after every part of the process in-house, with design, engineering, fabrication and installation all managed by the same team. We're specialists with huge integrity, working together to deliver technically advanced solutions for our customers – solutions that look superb and are built to last.

# RESIDENTIAL & LIGHT COMMERCIAL

## TECHNICAL EXPERTS FROM END TO END

We are the envelope experts. We have invested heavily in both technology and people to deliver high-performing buildings. ACMF designers and engineers use advanced modeling software to maximise buildability: we simulate fabrication and installation, so we know exactly how everything will slot together on site. Customers rely on us to problem-solve and come up with the optimal solution. From first drawings to certification, our talented team are all over the detail.

## QUALITY, QUALITY, QUALITY

We are known for the quality of our work and materials, sourcing systems and products from the world's top manufacturers, with every element tested for local conditions. We apply quality thinking at every step, including who we partner with. We have our own CNC machines for component fabrication. We use value engineering to optimise a building owner's investment and allocate budgets where it counts the most. Our objective is always to achieve longevity and looks over time – a longer service life with less maintenance.

## WE DO THE WHOLE ENVELOPE

We are completely self-contained, handling design, supply, fabrication and installation of the entire building envelope – cladding, louvres and screens, balustrades, roofing and fire-rated joinery. Having a 'one stop shop' on the job creates sequencing and sign-off efficiencies, simplifying every part of the process. One project contact. One contracting team on site. One warranty. We are uniquely able to provide a co-ordinated, choreographed solution that will save time, money and management.

## NZ OWNED AND PART OF THE HECO GROUP

ACMF is part of Heco Group – New Zealand's largest and leading façade and roofing products provider. This means we have access to the best systems and products in the world, and a robust supply chain. We have the capacity and resources to confidently take on any project, bringing a reliable source of products and services to all our projects.



# WHAT WE DO



## FACADES

### **Cladding, fabrication, installation.**

We supply and install a wide range of premium cladding products from aluminium weatherboard and panel, through to HD fibre cement, terracotta, porcelain and slate.

## LOUVRES & SCREENS

### **Louvres, Screens, Pergolas, Shading.**

We design, manufacture and install a range of premium architectural sun shading, sun control and privacy solutions for commercial and residential buildings throughout New Zealand.



## MAINTENANCE

ACMF has a maintenance division dedicated to maintaining facades, whether we installed them or not. We carry out repairs or re-clads for both general wear and tear or damaged facades and we can work with all cladding types and insurance claims.



## ROOFING

### **Asphalt, cedar, slate & pine shingles.**

We are experienced roofing contractors. We specialise in the installation of quality cedar shingles and shakes and Owens Corning fibreglass reinforced asphalt shingles in a range of colours.

## FLASHINGS & BALUSTRADES

We measure, design, fabricate, and install flashings that exceed NZ building compliance requirements. Flashings are made in our factory in a range of materials, for the NZ residential and commercial market. We specialise in aluminium, galvanised steel, aluminium/zinc alloy-coated steel, stainless steel and copper.



## FIRE RATED ALUMINIUM JOINERY

### **Doors, partition walls, curtain walls, 30-60 min fire rating.**

ACMF is the only accredited aluminium fire rated joinery (BRANZ assessed) in New Zealand.

# IN-HOUSE DESIGN & ENGINEERING

Our in-house Design and Engineering team, allows seamless integration from shop drawings to factory to installation; and provides a one-stop-shop approach to any project.

Our D&E team are experts at developing elegant, smart design solutions for technically challenging projects. We have a dedicated detailing studio that collaborates with architects from the earliest stages of a project. As well as producing building consent and shop drawings, our designers and engineers use advanced modelling software to assess buildability and to simulate fabrication and installation.







## IN-HOUSE FABRICATION

We have our own fabrication factory who works closely with the design and engineering and project teams to deliver a seamless integration from shop drawings to installation.

## INTERIORS

Servicing both the light commercial and residential markets we supply, fabricate, engineer and install interior cladding and bespoke interior elements for any project and budget. We work with the client to design the most stunning interior elements, apartment buildings, malls and retail, mixed use spaces, hotels and education centres as well as residential homes.



# CLADDING

ALICLAD

ALICEILING

ALISOFFIT

ALISCREENS

ALUCOLUX

ALUCOBOND PLUS

ALUCOBOND A2

ALUCORE (CLOSED CELL)

EQUITONE FIBRE CEMENT

INNOWOOD

TERREAL

FRONTEK

CUPACLAD

CEDRAL

# ALUMINIUM WEATHERBOARDS



## Performance and aesthetics combine in a contemporary aluminium cladding system.

New Zealand's tough climate calls for exterior products that can perform in all weather conditions, meet the most stringent code and standards, and bring elegance and architectural integrity.

AliClad, designed by The Building Agency, is a premium aluminium weatherboard system that has had every detail and feature designed, tuned and resolved. Backed by decades of local

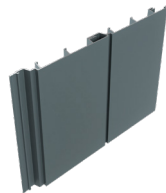
experience and international product knowledge, AliClad offers architects, builders and developers a robust and beautifully finished product, supported on an easy-to-install fixing system engineered to perform.

Designed for large-scale commercial projects with a residential application.

\*\* A selected range of profiles and widths.

## KEY FEATURES

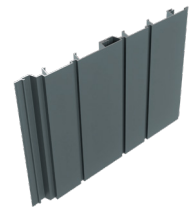
- Strength
- 25-year coating warranty
- Coated in New Zealand
- Mechanical drainage
- Designed for multi-storey
- Flashing system
- Non-combustible
- Ideal timber substitute
- Easy installation



SQUARE GROOVE - S200



SQUARE GROOVE - S150



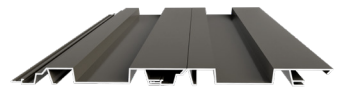
SQUARE GROOVE - S220-65



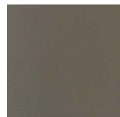
V-GROOVE - V136 / V150



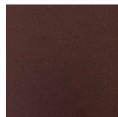
V-GROOVE - V200



BOARD AND BATTEN - 200



Brilliance



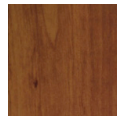
Dark Bronze



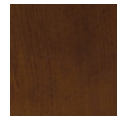
Monument



Vintage Silver



Maple



Merbau



Rata



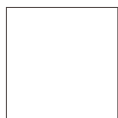
Rich Oak



Tawa



Black Ink



White



Linen



Natural Shimmer



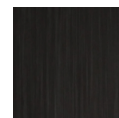
Suntone Bronze



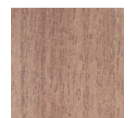
Australian Cedar



Beechwood

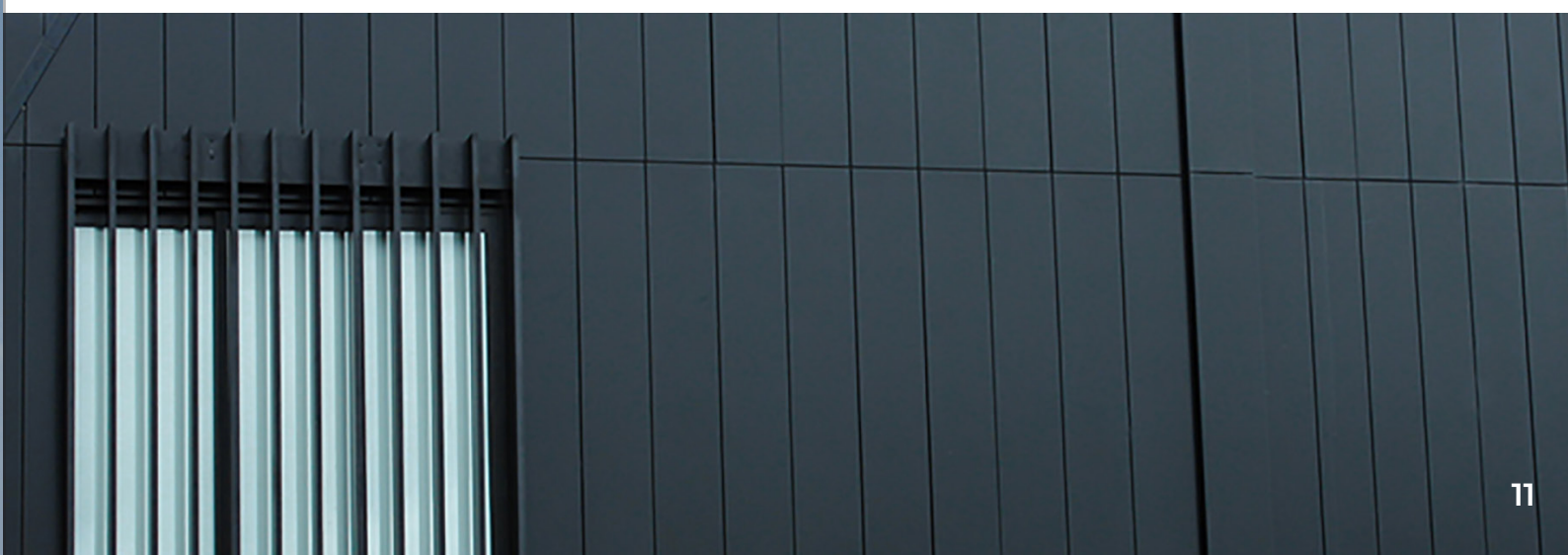


Black bean



Grey Walnut

## PROFILES



## ALICEILING

AliCeiling is an innovative, aluminium weatherboard ceiling solution available in a range of both contemporary and classic finishes. Perfect for both residential and commercial applications AliCeiling adds that extra detail of class to your projects while adding the durability of aluminium and the range of new colours and finishes.

You can also achieve a traditional timber look using the latest powder-coating technology while remaining non-combustible. The suspended 'Click On' fixing ceiling system works on the principle of clipping the AliCeiling onto the suspended carrier. This lightweight system is perfect for structural load areas and makes it easy to install and replace in case of damage.

## ALISCREEN

AliScreen is an aluminium batten screen solution transforming a conventional wall or space, indoor or outdoor. AliScreen offers added durability and structural strength while providing shade or privacy. We can vary the pitch, profile and vary the design based on your individual design requirements.

You can also achieve a traditional timber look using the latest powder-coating technology while remaining non-combustible.

## ALISOFFIT

AliSoffit is a premium aluminium weatherboard product making soffit installation easy for builders. Available in a range of both contemporary and classic finishes, AliSoffit adds that extra detail of beauty to your home's exterior while protecting your home with added notable durability.

Soffits are more than just 'trim' for your home, they protect your home's structure from water damage and keep your roof cavity well ventilated. Choosing the right soffit product for your house is important and all these factors need to be taken into consideration alongside overall aesthetics of your project's design.



# ALUCOLUX SOLID



3A Composites have used their vast experience with aluminium façade panels to develop **Alucolux** Solid Aluminium over the last 60 years. This enhances our extensive range of high performance cladding solutions. **Alucolux** is a 3mm solid, coil coated aluminium sheet material for exterior cladding and interior linings. **Alucolux** is available in most of the same colours found in the **Alucobond Plus** range and is also available in embossed surfaces to liven up the 'wood look' and 'stone look' ranges.

3A have developed from the optimum marine grade aluminium, **Alucolux®** is the perfect combination of alloy temper, hardness and ductility. Architectural cladding applications require the correct combination of these properties to perform when exposed to wind loads and pressure while remaining flexible enough to be manufactured into its final forms. **Alucolux®** provides a non-combustible cladding solution for compliance and safety with

no complications. Deemed non-combustible and certified to AS1530./ISO5660.1/EN13501-1. Additionally **Alucolux** is the first system to be tested in NZ under the BS8414.

**Alucolux** provides solutions for architects, designers, developers, builders and construction companies looking for a premium solid aluminium façade panel they can safely specify for commercial, educational, aged care and residential projects without compromising design. This compliments our range of **Alucobond Plus**, **Alucobond A2** and **Alucore A2** resulting in superior performance across and price range.

## KEY FEATURES

- 3mm solid non-combustible aluminium
- Coil coated for colour consistency
- Flat surface for a premium finish
- 1500mm wide sheet size up to 6000mm long can be provided



# ALUCOBOND PLUS



**Aluminium composite panel with a fire-retardant mineral filled core.**

**ALUCOBOND® PLUS** consists of two aluminium cover sheets and FR mineral-filled core. The unsurpassed finish and flatness of **ALUCOBOND® PLUS**, its dynamic range of colours, formability and weather resistance allow the designer complete freedom of creativity. **ALUCOBOND® PLUS** has been developed exclusively for the more stringent requirements of the fire prevention regulations in architectural products. Thanks to its mineral-

filled core **ALUCOBOND® PLUS** meets the strict requirements of the fire-classifications as a Type B material. Additionally, it achieves a Group 1S for internal uses. It offers all the proven product properties of the **ALUCOBOND®** family, such as flatness, formability, resistance to weather and easy processing.

**ALUCOBOND®** shows excellent product properties such as extraordinary flatness, a large variety of colours and perfect formability. It has been developed as a rigid and, at the same time, flexible fascia material for architecture.

## PAINT FINISH

The face sheet of aluminium is finished in a factory applied fluoropolymer (PVDF) high performance coil coating in accordance with EN13523, ECCA Quality Label and Voluntary Specification AAMA 2605-11.



# ALUCOBOND A2

**ALUCOBOND® A2** is a composite panel consisting of two aluminium cover sheets and a mineral-filled core. **Alucobond A2** has an enhanced FR core that further limits combustibility with an A2 rating + EN13501-1 and is suitable for buildings that require a higher levels of fire resistance. **Alucobond A2**



# ALUCOBOND®

has all the benefits and range of colours as **Alucobond Plus**. **ALUCOBOND® A2** perfectly adapts to the contours of the buildings forming complex, flowing elements. It is the combination of formability, flatness, stability and weather resistance that characterizes this material.

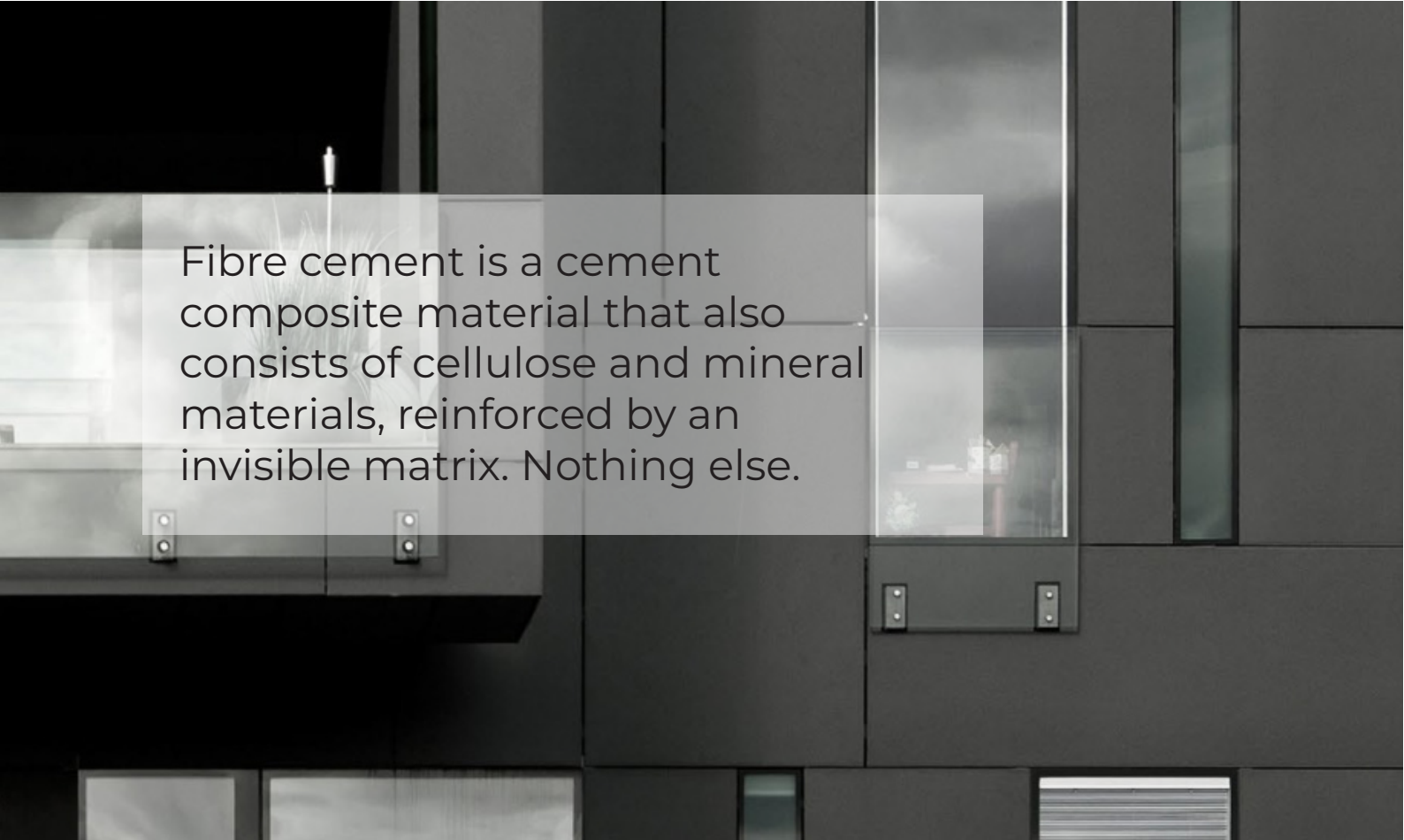


# ALUCORE CLOSED CELL

**ALUCORE** consists of two aluminium cover sheets of at least 0.5mm thickness sandwiching an expanded closed cell “honeycomb” aluminium core. The aluminium closed cell honeycomb core gives the composite panel a high rigidity and an extremely low weight. **ALUCORE** therefore provides a decisive advantage over other types of core panel where very high demands are made on the material for applications such as façade cladding or roofing, e.g. if exposed to extremely high wind load and for large self-supporting panels. In contrast

to conventional type composite panels, the closed cell system components of **ALUCORE** are bonded in a continuous process. The material does not become brittle-hard but displays tough and resilient properties and excellent peel strength – the basis for extremely high product quality. **Alucore:** The extremely lightweight aluminium honeycomb panel. **Alucore** provides superior flatness and rigidity for its mass and is applied in numerous business sectors such as architecture, industry and transport.





Fibre cement is a cement composite material that also consists of cellulose and mineral materials, reinforced by an invisible matrix. Nothing else.

## FLEXIBLE

- The EQUITONE material ranges come in a standard panel size of 1.22 x 3.05m and can be transformed into almost any size or shape in the workshop or on-site.
- The range consists of a broad range of colours, semi-transparent surface coatings and textures.

## SAFE

- Facades with pre-finished panels are thin and lightweight, resulting in a minimum depletion of raw materials, easy installation and better seismic resistance.
- The products have been tested according to NZS2908 and have been used all over the world and in the most diverse climate zones.
- The material can be perforated using water jet or CNC machines, large or very small cuts can be made, it can even be embossed and printed. Some designers have used it for interiors or furniture.

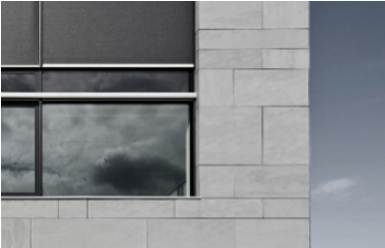
## USER FRIENDLY

- At the Building Agency the Technical Department develops solutions that cope with the most diverse applications. We take all factors into consideration including exterior and interior cladding, modular sun protection systems and balconies.
- Specifically developed and tested with ventilated and drained cavity systems.
- Concealed system or visible stainless-steel fixings.
- Easy to install with minimal components.



## PRODUCT RANGE

We currently stock cladding from the Equitone Natura and Tectiva ranges although if you are looking for a different product please speak to us about arranging a special order. No matter what design options you explore, EQUITONE's through-coloured nature guarantees crisp, monolithic details.



### TECTIVA (standard range)

EQUITONE [tectiva] is a through-coloured facade material, characterised by a sanded surface and naturally occurring hues within the material. The material comes in a large panel size and can be transformed into any size or shape in the workshop or on site.



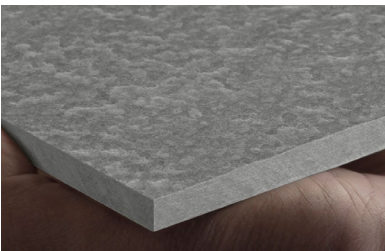
TE00 TE10 TE15 TE20 TE85

STOCK COLOURS: More colours available on indent.



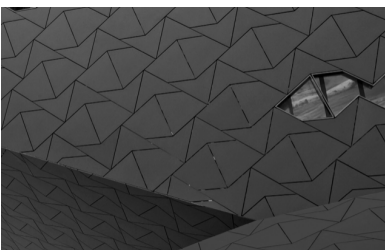
### LINES (by special order)

EQUITONE [lines] is a unique 3D shaped, through-coloured facade material that plays with light and shadow. EQUITONE [lines] displays a linear texture that highlights the raw inner texture of the core fibre cement material. Both visible and invisible fixing options exist for EQUITONE.



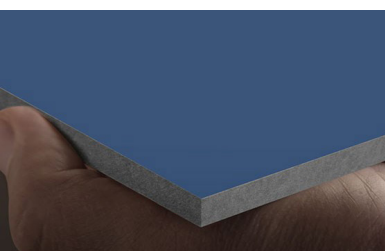
### LUNARA (by special order)

EQUITONE [lunara] is a through-coloured fibre cement panel with a surface resembling a lunar landscape that demonstrates the natural quality of fibre cement as a material. The special production process makes each panel unique in terms of its colour, texture and surface, with a pattern that is not repeated.



### NATURA (by special order)

EQUITONE [natura] is a through-coloured facade material. Every EQUITONE [natura] panel is unique, subtly displaying the raw texture of the core Equitone fibre cement material. The material comes in a large panel size and can be transformed into any size or shape in the workshop or on site.



### PICTURA (by special order)

EQUITONE [pictura] is a through-coloured facade material. Every EQUITONE [pictura] panel is unique, subtly displaying the raw texture of the core Equitone fibre cement material. The material comes in a large panel size and can be transformed into any size or shape in the workshop or on site.

## SHIPLAP CLADDING SYSTEM

INNOWOOD's Shiplap Cladding System features an interlocking tongue and groove design to achieve concealed fixings while providing a conventional timber appearance with a warm, clean and durable finish. Consistently uniform shadow lines between the boards become architectural features when the boards are installed either horizontally or vertically.

## V - JOINT SHIPLAP CLADDING

INNOWOOD's V-Joint shiplap cladding system comes in 25mm thick boards with 'V' shaped tongue and groove shadow line rebated joints. INNOWOOD's V Joint shiplap boards overlap one another, concealing the fixing and locking in the boards to give a clean finish. Profiles can be mixed and matched to achieve varying board widths, creating a unique architectural feature.



Available Profiles



WC20025/WC13625

Available Stock Colours



Urban Oak

Dark Oak

Spotted Gum

Kiwi Black

**\*Other profiles and colours including lighter shades available by request. MOQ's do apply. You can view full colour chart on our website.**

# TERRACOTTA CLADDING



## BUILDING BEAUTY

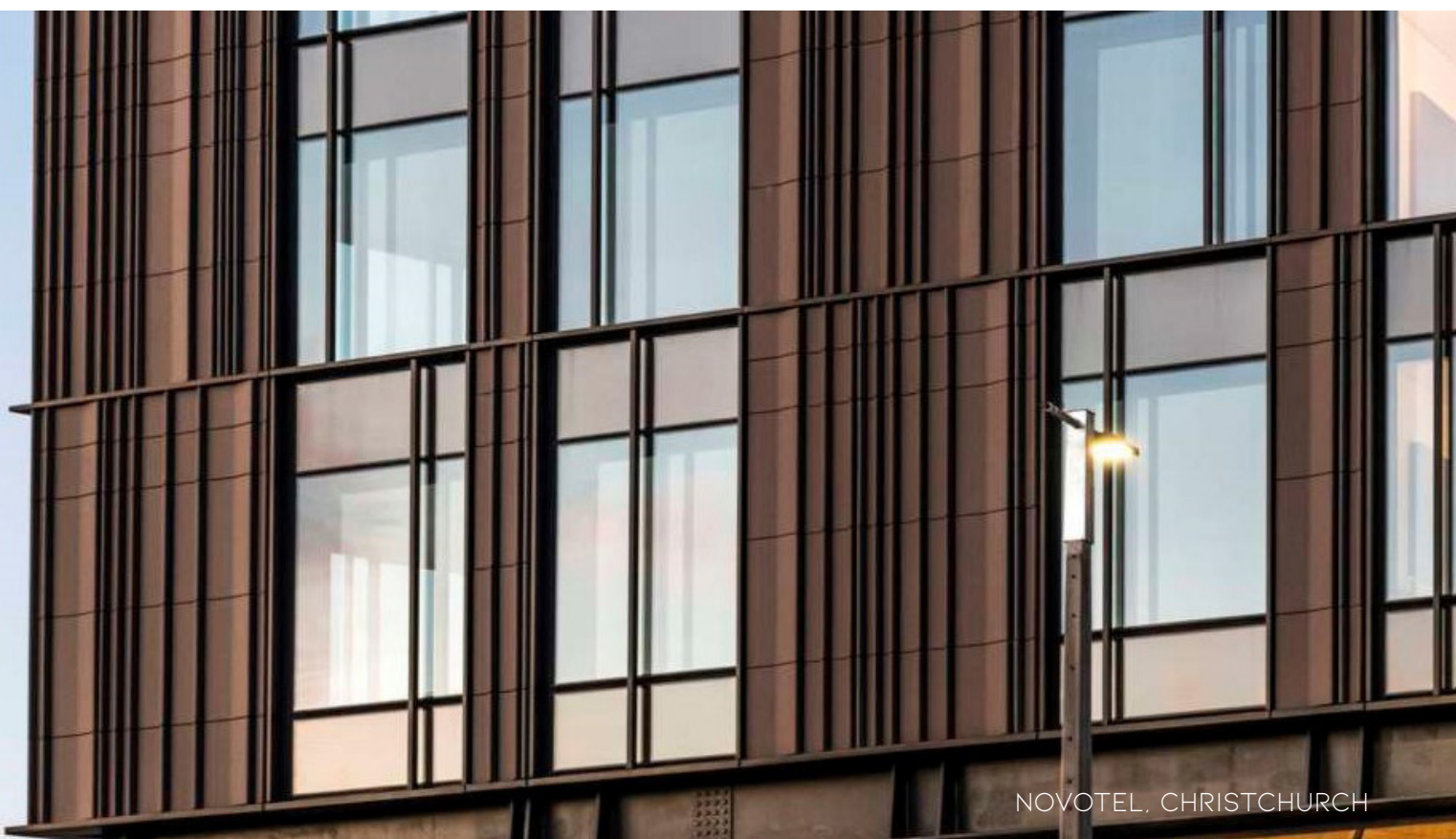
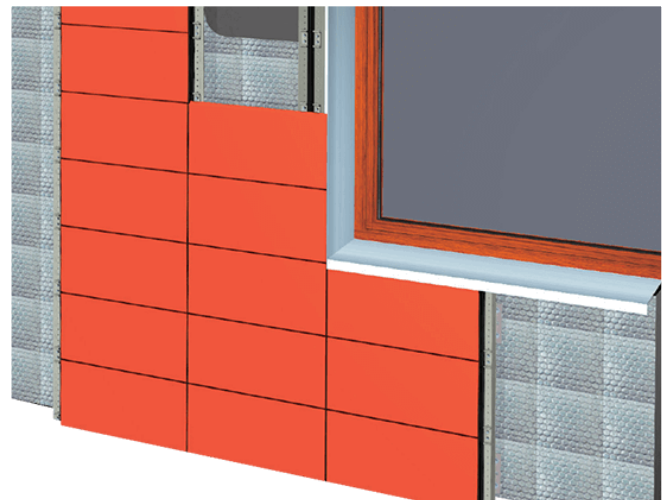
Inspired by the beauty and the natural qualities of terracotta for more than 150 years, TERREAL has become a key player in building materials. Our range of tile options includes, double walled tiles, acoustic tiles, unique surface finishes, extruded corner options and more. The unique finishes allow the possibility to create tiles in any RAL colour and to apply logos onto the surface. We are even able to work with 3-D shapes in the facing of the tile.

## WHILE OTHER MATERIALS MAY CHALLENGE TERRACOTTA, FEW ACHIEVE ALL OF THE FOLLOWING QUALITIES:

- Modern yet authentic
- Environmentally friendly and 100% natural
- Fire and impact resistant
- Durable, perennial and recyclable
- Low thermal conductivity
- Architectural and creative
- Warm and light

## TERRACOTTA: TIMELESS MODERNITY OF AN AGE OLD MATERIAL

Since ancient times, clay has been used for decoration, protection and appeal. Today, it takes new shapes that add style to your architectural designs. Terracotta is a material with cutting-edge production techniques and industry leading performance in all requirements: manufacturing consistency, numerous colour variations, product customization, ease of installation, versatility, insulation performance and environmental responsiveness.

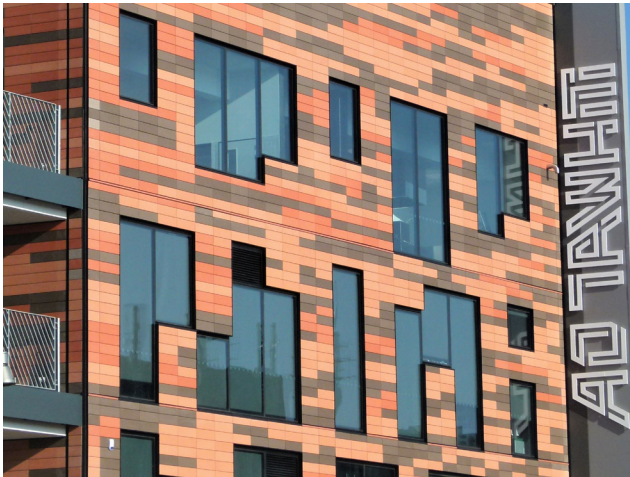


## BUILT TO SURVIVE AND THRIVE

The substructure is designed to cope with New Zealand's high wind and high humidity conditions, with either an EPDM pressure gasket or open joint vertically negative detail, a minimum 60mm wide cavity and horizontal shiplapped tiles. The systems have been tested against wind pressures of up to 5.5 kPa for the Breeze tile. The bracket system used is illustrated under T50 support structure (Page 21)

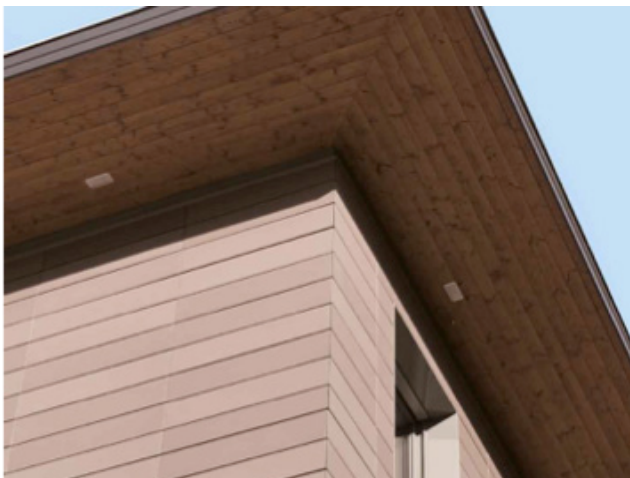
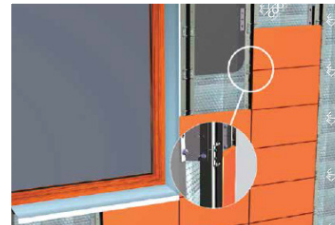
As the tiles are hanging onto proprietary clips, the system does not create stress on the tiles but offers great seismic resistance.

Facades are thin and medium weight (from 30kg/m<sup>2</sup>) and the wide cavity system achieves pressure-equalisation, exterior grade 50-year durability and extended detailing to comply with the required conditions for the project.



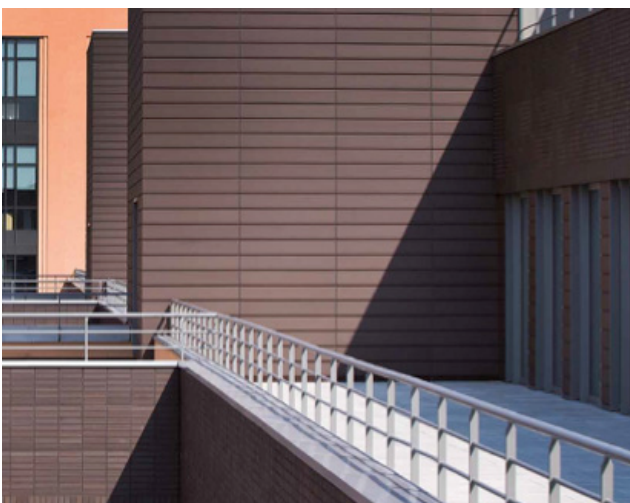
### BREEZE (standard range)

- Economic and light solution : 35kg/m<sup>2</sup>
- Always 300mm height and 6 standard colours
- Smooth and ridged surface available
- Easy cuts made on-site
- Sustainable and maintenance free



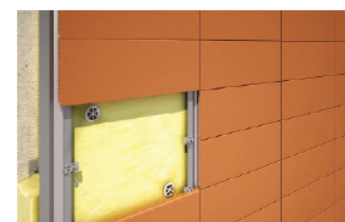
### PITERAK XS (by special order)

- Incomparable lightness (30kg/m<sup>2</sup>)
- Optimisation of the transport cost (size and weight)
- Choice of installation: horizontal, vertical
- Simple and fast installation using clips



### PITERAK SLIM (by special order)

- Large length terracotta cladding : up to 180 cm
- Height from 20 - 60cm
- Many customization possibilities : colour/finish/shape
- Choice of installation : horizontal or vertical
- High impact performance
- Maintenance free and durability



# VENTILATED CERAMIC FACADES

Its unique design ensures optimal fixing to any structure without any additional cuts or perforations that could impair their strength. Frontek rainscreen installation is quick and easy in sheer walls, stud walls or integrated into curtain walls.

Porcelain is one of the most used decorative materials both for indoor and outdoor projects. The range of colours and textures is virtually

limitless. Our catalogue ranges from the traditional stone finishes to the latest European designs in colours and textures.

Frontek combines the advantages of extruded terracotta panels and pressed porcelain tiles. The panels are rectified on all four sides, and therefore offer a level accuracy and tolerance unattainable for similar materials.

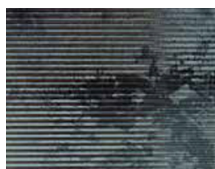


## FINISHES

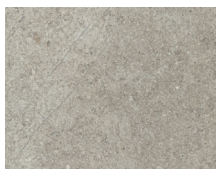
Frontek offers a wide range of pieces in different sizes and finishes to suit all projects and the latest trends in architecture. A variety of sizes, textures and colours can be combined in

different ways, to give each facade a unique and original design. All facade panels can be adapted to any building peculiarity and its surroundings, which will result in beauty that brings great poise to the structure, and improves the aesthetics of the area.

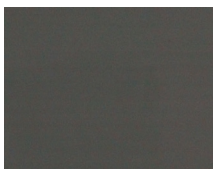
### Available Finishes



Metal



Nature



Polished



Special



Stone



Wood



# NATURAL SLATE



Developed from centuries of use, **CUPACLAD** ventilated façade systems can adapt to any kind of project, by combining alternative fastening methods and slate formats.

The systems were created to fill the need to adapt to the trend for more sustainable solutions.

By using highly durable tectonic slate, **CUPACLAD** rises to the challenge and offers a competitive and sustainable option for cladding any type of façade.

**CUPACLAD** solutions are lightweight, easy to install and can be cut to any shape, to suit any architectural vision.

With **CUPACLAD DESIGN**, this design freedom is further reinforced, with a collection of stunning finishes created by combining different profiles, sizes and configurations. Each is inspired by current architectural trends and designed to maximise the natural beauty of slate.



## PRODUCT RANGE



RANDOM 101



LOGIC 101

- **ONE-OF-A-KIND:** Each slate is unique. No other artificial alternatives could compare with a product which has been moulded by nature for over 500 million years.
  - **DURABILITY:** With a durability of over 100 years, natural slate is the most resistant material used for roofing. Unlike the artificial products, the colour and the properties of slate stay, unchangeable, through time with no need for re-coating.
  - **SUSTAINABILITY:** By being 100% natural, slate is the roofing material with less environmental impact. Each slate is hand crafted by our skilled splitting craftsmen
- with no chemical products or additional treatments added.
- **PERFORMANCE:** Slate is capable of enduring extreme temperatures, difficult snow formation, fire-resistance as well as being non absorbent
  - **PERSONALITY:** Its unparalleled character and durability makes this material ideal to give an outstanding appearance and personality to any architectural project.
  - **The world leader in natural slate.**

- COST SAVING OVER OTHER SLATE
- QUALITY ASSURED
- SAFE
- KIND TO THE ENVIRONMENT



# CEDRAL WEATHERBOARDS

# CEDRAL

**The ideal alternative to traditional cladding material,** Cedral is easy to maintain, resistant to rot and offers two stylish solutions depending on your needs. Cedral is a high-quality and durable composite material produced using natural raw materials: cement, water and, cellulose. These fibre cement planks create a beautiful contemporary look that will last a lifetime. Being a sustainable material, Cedral is ideal for new-builds and renovation projects. Thanks to the multilayer fibre structure, the fibre cement planks combine the durability of stone with the design flexibility of wood.

Cedral is coated in a high-quality external grade acrylic paint specifically developed and manufactured by Etex. The coating is factory applied which is not comparable with an on-site application. The planks are pre-heated before the application of the primer and then dried in an oven after the topcoat. The high quality and purpose-designed external grade acrylic coating system coupled with the semi-baked application, result in the superior durability of the finish.

Available in 22 colours to create a perfect aesthetic finish. We stock a number of these in New Zealand

## CEDRAL LAP

Cedral Lap planks are designed to be installed in a traditional weatherboard style. Cedral Lap planks are a fibre cement, overlapping plank cladding material creating a modern and contemporary facade. Cedral soffit and fascia boards work in perfect harmony with the sidings.

## CEDRAL CLICK

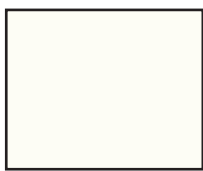
Cedral Click external cladding is easy to install and maintain. The weatherboards have a tongue and groove system and can be placed horizontally or vertically.



Stock Colours (More colours available on indent)



Dark Brown



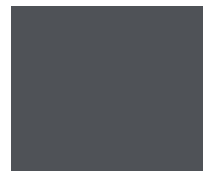
Everest White



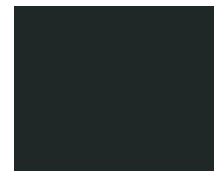
Clay



Shark Grey



Slate Grey



Black





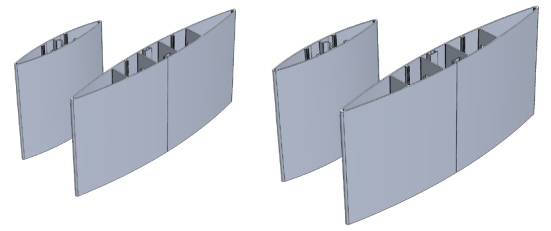
OUR **FLASHINGS** ARE  
DESIGNED & BUILT TO  
**PROTECT** AGAINST THE  
**HARSH NZ ENVIRONMENT.**

# LOUVRES

AERO  
QUADRO  
MECHANICAL  
OPERABLE

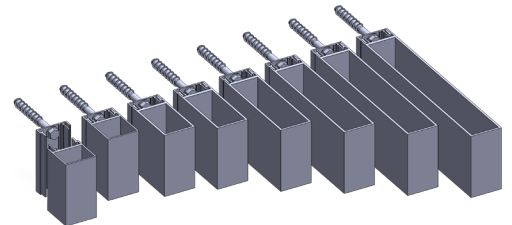
## ACMF AERO 120/150/180/200/250/300/500/600/700/775/800

Combining the most modern shading technology with architectural aesthetics, the ACMF AERO louvre system provides rain, privacy & weather control. Compatible with a range of louvre systems including motorized panels, end fixed, rear fixed, or bracket fixed. Available in a range of widths starting from 120 right through to 800 tailor-made to match designer and end-user requirements.



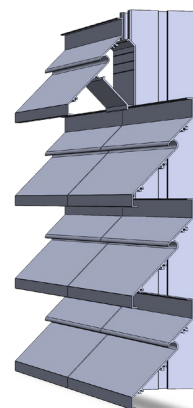
## ACMF QUADRO 40/50/80/100/150/200/250/300/440/550/600

The ACMF QUADRO louvre system is a range of chamfered and square box louvre blades that offers excellent span capabilities due to its unique geometry. This option is popular on modern homes and commercial projects providing rain, privacy & weather control. Compatible with a range of louvre systems including motorized panels, end fixed, rear fixed, or bracket fixed. Available in a range of widths starting from 40 battens right through to 800 blades



## ACMF MECHANICAL Z125 / Y64

The ACMF MECHANICAL louvre system is a range of Z and Y louvre blades that provides plant-rooms and mechanical ducts with a design solution that balances a level of ventilation, pressure drop, rain defence, acoustic and vermin-proof solutions.



## ACMF OPERABLE PERGOLA HD170 / LD170

ACMF OPERABLE pergolas provide environments with controlled ventilation as well as providing protection against rain when closed in both residential and commercial projects. Operable pergolas can be connected to the Building Management System and powered by world leading LINAK® electric actuators combined with rain sensors and manual switching.



# ROOFING

OAKRIDGE PRO 30  
DURATION PREMIUM  
CEDAR SHINGLES  
CEDAR SHAKES  
READYSLATE

# OAKRIDGE PRO30<sup>®</sup>



## SOLID PERFORMANCE AND STRIKING BEAUTY.

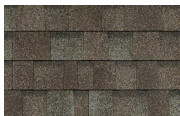
Owens Corning Oakridge laminated shingles have a warm, inviting look, for a step up from traditional shingles. With an expanded Oakridge

shingle colour palette, you are provided a unique blend of artistry and craftsmanship that will give your home a look that is anything but ordinary.

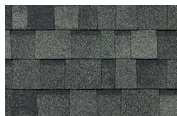


### Available Colours

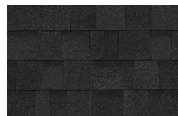
#### Stock



Driftwood



Estate Grey



Onyx Black

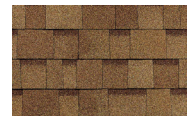


Teak

#### Indent



Brownwood



Desert Tan

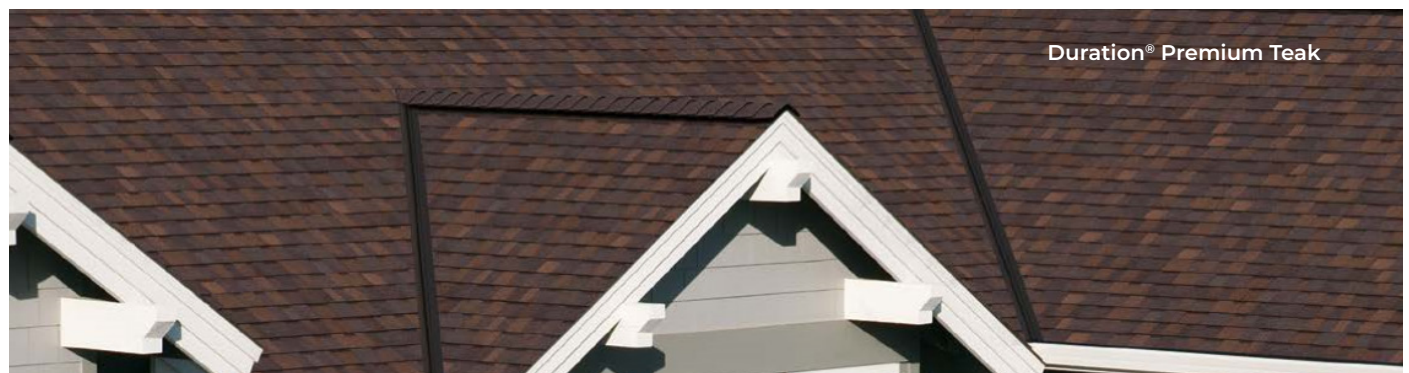
# DURATION PREMIUM<sup>®</sup>

TruDefinition<sup>®</sup>  
**DURATION<sup>®</sup> SHINGLES**  
with SureNail<sup>®</sup> Technology

## BOLD CONTRAST. DEEP DIMENSION. OUTSTANDING PERFORMANCE.

TruDefinition Duration Shingles are specially formulated to provide dramatic colour contrast and dimension to any roof and are available in all the popular colours. Beyond the impressive

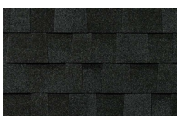
curb appeal, they also come with the advanced performance of patented SureNail<sup>®</sup> Technology, a technological breakthrough in roofing.



### Available Colours



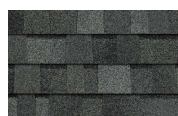
Driftwood



Onyx Black



Teak



Estate Grey

# CEDAR SHINGLES

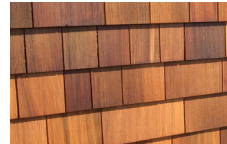


The premium grade of shingles for roofs, gable ends and side walls. These top-grade shingles are 100% heartwood, 100% clear and 100% edge grain. Cedar shakes and shingles manufactured by members of the Cedar Shake & Shingle Bureau ("CSSB") are the only products labelled with the "Certi" brand name.

Certi-label cedar shakes and shingles are made by experienced craftsmen who take pride in their trade and the quality of their product. Each bundle of product has the mill's distinctive Certi-label tucked under the bundle strap.

Asking for "the blue label" or "number one blue label" is not specific enough: CSSB members' products are the only ones with the Certi brand name on the label.

### Available Profiles



Western Red Cedar Shingles



Alaskan Yellow Cedar Shingles



# CEDAR SHAKES

## TAPERSAWN SHAKES

These Shakes are sawn both sides. Premium Grade is 100% edge grain, 100% clear and 100% heartwood.

## HANDSPLIT CEDAR SHAKES

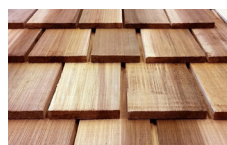
These shakes have split faces and sawn backs. Available in Premium Grade (100% edge grain)

## ALASKAN YELLOW CEDAR SHINGLES AND SHAKES

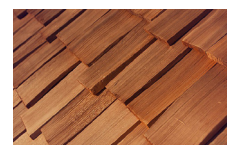
Due to its slow growth, Alaskan Yellow Cedar is hard and durable. It therefore offers good dimensional stability, and is resistant to weather, insects, and contact with soil.



### Available Profiles



Western Red Cedar Tapersawn Shakes



Western Red Cedar Handsplit Shakes



Alaskan Yellow Cedar Shakes

**READYSLATE is the first pre-assembled natural slate roofing system, developed and patented by CUPA group, world leaders in natural slate.** READYSLATE maintains all the exceptional properties of natural slate, a product which has been formed by nature for over 500 million years with unmatched and unbeatable characteristics.

Natural slate is a long-lasting, high strength, weatherproof and fire resistant natural material which holds natural beauty and remains unchanged over time. Our 100% natural slate is split by hand and uses no additional chemicals, which combined with its unmatched durability, makes it a sustainable material with low environmental impact.



## KEY FEATURES

80%  
FASTER

**READYSLATE** reduces installation times up to 80% when compared with traditional slate roofing.

100%  
NATURAL  
SLATE

**READYSLATE** is composed of high quality hand-quarried CUPA natural slates, which cover some of the oldest and most beautiful buildings around the world.

40%  
LESS PRODUCT  
WASTE

Thanks to its modular design and almost non-existent product waste, **READYSLATE** uses up to 40% less natural slate, reducing costs and structural weight.

## SIMPLE

**READYSLATE** offers the do-it-yourself approach, with a 4 step easy installation that requires neither skilled labour nor specialized machinery. The modular design makes laying slate tiles a breeze. **READYSLATE** modules are composed of 6 high quality hand quarried Natural Slates, mounted on vulcanized EPDM waterproof sheet. Modular design ensures complete waterproofing and seamless integration with any existing roof elements.



# INTERIORS

**INNOSCREEN**  
**INNOCEIL**  
**EQUITONE**  
**DIBOND**





**INNOWOOD SCREEN SYSTEMS OFFER MULTIPLE BENEFITS OVER REAL TIMBER**

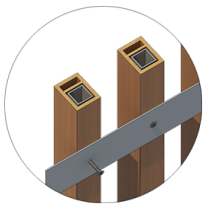
InnoScreen systems offer an exciting, flexible and versatile alternative to conventional facade

designs. With the look and feel of real timber, they add a warm, natural and stylish look to enhance the appearance of any conventional wall, soffit or ceiling treatment.



**CONCEALED LOCK IN FIXING**

InnoScreen's Concealed Lock-in Fixing System creates a perfectly clean line with battens that simply lock into place, concealing the single-part rear clip that can be set out to any desired spacing.



**FACE & REAR FIXING**

are either face-fixed or back-fixed directly through the profile. InnoScreen Face & Rear Fixing Systems are also finished on all faces for applications where the batten is visible on both sides.

**Available Profiles**



**Available Stock Colours**

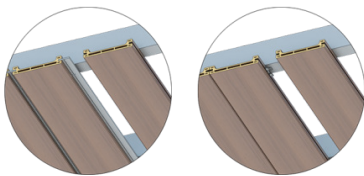


## INNOWOOD INTERNAL LINING

**InnoWood Internal Lining** is suitable for a range of internal lining applications where the look and feel of natural timber is desired. In addition to creating a stylish and warm interior finish, **InnoWood Internal Lining** is lightweight, and offers outstanding acoustic performance. The ability to curve and bend **InnoWood** Internal Lining makes it ideal for any design specification.

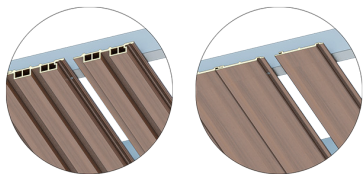
## INNOCEIL

**InnoCeil** offers the architect & designers the flexibility to create any architectural features, curves, waves and shadow effects, while incorporating basic building services such as lighting, ventilation, sprinklers and air vents. Our systems not only create instant sophistication as an architectural feature, but they also have a high acoustic performance rating for the ultimate sound quality.



### CONCEALED CLIP FIXING

**InnoCeil** Concealed Clip Fixing Ceiling System utilises a stainless-steel clip attached to each profile, and screws into the ceiling substrate without the need for exposed fixings. The system is easy to install and delivers consistent shadow lines between the boards for a smart, uniform look.



### SHIPLAP FIXING

INNOWOOD shiplap ceiling system is based on a traditional tongue and groove design, our Shiplap Ceiling System creates a clean finish with uniform joints but without any visible fixings.



### SUSPENDED CLICK ON SYSTEM

**InnoCeil** Suspended Click-On Fixing Ceiling System works on the principle of clipping the profile onto its suspended carrier to secure it in the desired position. This system is available in different sizes and span centres to suit most design requirements. The lightweight suspended Click-On system is perfect for areas where structural loads are critical. Our click-on system makes it easy to install and replace battens.

### Available Profiles



CL14025



CL14010



CL03070

## GROUP 1 COMMERCIAL INTERIORS: INNOCEIL & INNOSCREEN

Innowood has been increasingly used as an alternative to real timber due to the ability to build in various levels of fire performance. Over the past few years, we have supplied to a number of projects to meet the material group

numbers 1-S or 2-s. The inclusion of the fire retardant in the extrusion process means there is minimal change to the finished look of the wood. Not only that, but as it is not a surface coating and cannot de-laminate in the future.



The EQUITONE® through-coloured materials enables you to achieve flawless intricate details.

## CONTEMPORARY AND DURABLE, PERFECT FOR INTERIORS

EQUITONE® High Density Fibre cement is a mineral composite material with outstanding aesthetic and physical properties designed as cladding by and for architects. Equitone has been widely used for interiors and furniture as the fibre cement product offers a new range of possibilities in designing and constructing monolithic surfaces. The fibre cement material is through-coloured, which means the surface displays the inner texture and colour of the core material.

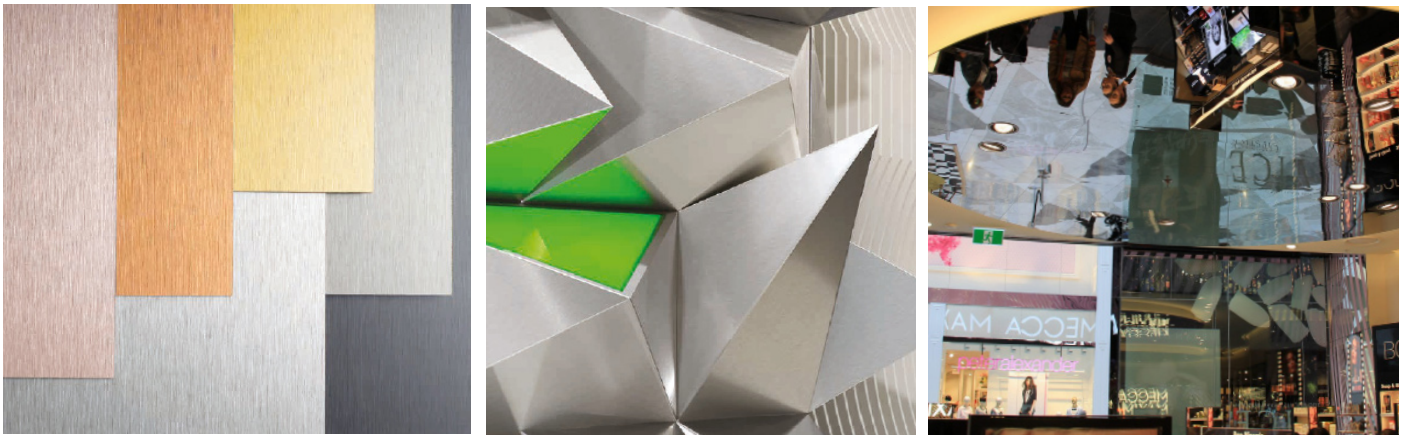
No matter what interior design options you explore, the through-coloured materials can be transformed into crisp, monolithic facade details. The material can be perforated using water-jet or CNC machines, large or very small cuts can be made, it can even be embossed and printed. For an interior fixing system, Sika products are used to provide an invisible fixing with glue and tape for a clean smooth look.

- Fire Safe (Non-Combustible and no spread of flame)
- Extremely durable
- Integral “through colour”, no ongoing maintenance required
- Installed life expectancy of at least 50 years
- Resistant to vermin, insects, mould growth, fungi etc.
- Fibre cement is a cement composite material that consists of cement, cellulose and mineral materials, reinforced by a visible matrix. Nothing Else.

**DIBOND is the ideal aluminium composite panel for corporate displays and architectural signage.**

DIBOND was originally developed in 1992 by 3A Composites as one of the first aluminium composite material for the display and signage markets. The light-weight and rigid composite material is ideal for large signage applications, architectural signs, display and exhibition, POS / POP display, digital & screen printing, photo mounting, interior design, industry and transport.

DIBOND is the original aluminium composite sheet, comprising two 0.3mm thick aluminium cover layers and a polyethylene or mineral core. It is lightweight, extremely rigid and strong, making it ideal for both indoor and outdoor applications. DIBOND is used predominantly in the areas of signage, product and furniture design, shop fitting, interior design, shop design as well as trade fair and exhibition design.



## KEY BENEFITS

- High corrosion resistance
- Excellent processing parameters, e.g. bending, routing and folding
- Colour quality, trueness and colour thickness
- Absolutely flat surface
- Stocked and distributed locally
- Applicable for screen printing and direct-to-substrate digital printing
- UV protection
- Optimized for outdoor signage use
- Low thermal expansion compared to plastic materials
- Low weight combined with high rigidity and dimensional stability
- Cost-effective through flat transportation and local manufacture installation

## APPLICATIONS

- Corporate Identity
- Exhibition
- Retail design
- POP display
- Photo mounting
- Shop fitting
- Sign making
- Transport

## STOCK COLOURS (More colours available on indent)



Traffic Red



Traffic Yellow



Platinum White



Jet Black



Butler finish





**Technically advanced building  
solutions for both residential  
and commercial.**

**ACMF Northland**

13/50 Kioreroa Road, Port Whangarei 0110  
info@acmf.co.nz  
09 777 0042

**ACMF Auckland**

54 Ellice Road, Wairau Valley, 0629  
info@acmf.co.nz  
(09) 442 5062