

The background of the entire page is a complex, overlapping architectural line drawing. It features various geometric shapes, lines, and patterns that suggest a detailed floor plan or a technical drawing of a building's structure. The lines are thin and light gray, creating a sense of depth and complexity.

F O U N D



S P A C E

**Builders / Renovators Guidelines & Considerations**

F O U N D

S P A C E

# Hello & Welcome To Your Found—Space Sauna Builders Guide.

We are leaders in the infrared sauna industry. We aim to inspire a global movement of better health experienced in the spaces we inhabit and within ourselves. Found—Space is for anyone who want to embrace life by making the necessary changes to continue to grow and thrive.

This guide will tell you all you need to know about our building and rennovating guidelines. The following is provided to help ensure that the sauna installation is seamless. If you are unsure about anything, please discuss with your sauna consultant. Before committing to the final plans check in with us to ensure that what is proposed will work.

Welcome to Found—Space.

Welcome Home.

A handwritten signature in white ink that reads "Alex Tyson". The signature is fluid and cursive, with a long horizontal stroke extending to the right.

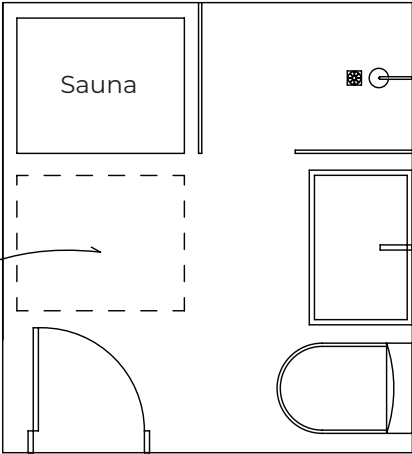
Alex Tyson  
Found—Space CEO

# Indoor Saunas

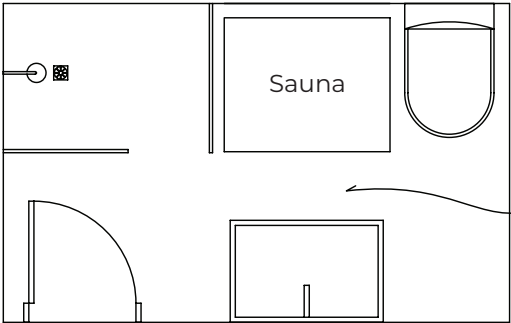
	Requirements
<b>Power</b>	<ul style="list-style-type: none"> <li>Standard 10amp GPO for all saunas except the 3 person Full Spectrum, this requires a 15amp GPO.</li> <li>The power cord for all saunas except City Compact comes from the roof and is 3M long. If installing a new GPO it is recommended to be on the wall above the sauna.</li> <li>The City Compact's cord comes from the rear at the base, it is still recommended to install the GPO above the sauna as this will allow it to be pushed back closer to the wall.</li> <li>Consider a separate circuit if feasible</li> </ul>
<b>Height</b>	<ul style="list-style-type: none"> <li>2400mm ceiling height is preferred. A bulkhead can be installed post installation only. A manhole size access panel is required.</li> </ul>
<b>Side Clearance</b>	<ul style="list-style-type: none"> <li>20mm either side, consider any type of skirting in this calculation. If sauna is 1200W there must be 1240 between skirtings.</li> <li>If the sauna is being installed in a tight space there needs to space in front to assemble the sauna (see diagram below) The floor finish would need to allow for this, i.e. same level and hard smooth surface.</li> </ul>
<b>Flooring</b>	<ul style="list-style-type: none"> <li>The saunas can be installed on any flat floor surface (carpet is OK). However, a hard floor surface is recommended.</li> <li>The City Compact requires a hard floor surface such as tiles, timber. Laminate or manufactured flooring is not suitable.</li> </ul>
<b>Other</b>	<ul style="list-style-type: none"> <li>There is no plumbing required, infrared saunas use no water.</li> <li>If going in a bathroom. Keep cabinet protected from the exposure to water. Normal shower steam is Ok so long as there an extraction fan.</li> </ul>

# Examples Of Tight Space

✓ Sauna can be assembled here and pushed back

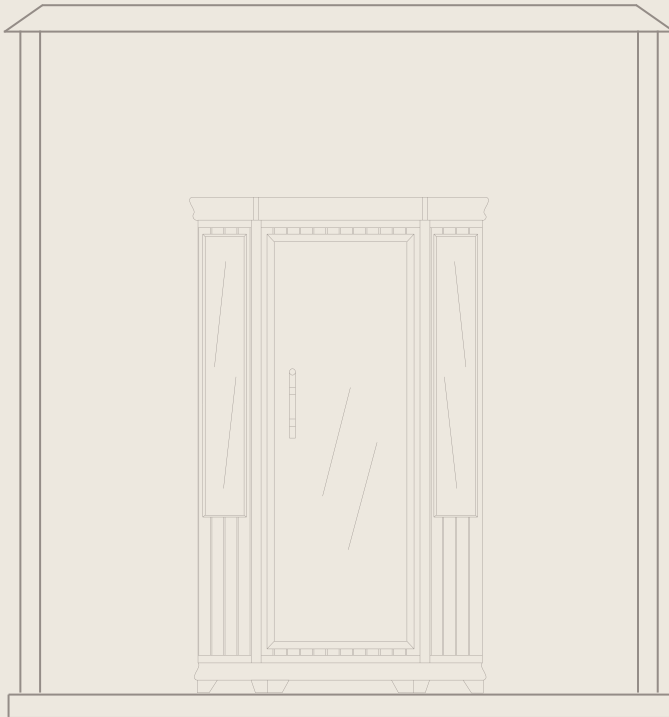


✗ Insufficient space in front of vanity to assemble.



# Indoor Saunas Outside

Only the Premium range is suitable to go outdoors however, must be 100% protected from any precipitation and be installed on a flat dry surface. If exposed to regular sunshine the cabinet will need to be suitably cared for. Think of putting an indoor piece of furniture outside.



F O U N D

S P A C E

An infrared sauna is so much more than just a hot box where you go to get your sweat on.

We aim to create empowering experiences for people who want to improve their health, energy and life. We aim to support your physical, environmental and spiritual habits, as we believe that creating the change in your life you want starts in the home, the body and mind, and in the heart.



# Outdoor Saunas

	Requirements
<b>Power</b>	<ul style="list-style-type: none"><li>• Requires a 15amp GPO.</li><li>• Power 3300 Watts.</li><li>• Power cord is 3.5m long from rear.</li></ul>
<b>Placement</b>	<ul style="list-style-type: none"><li>• Solid flat surface required. Concrete slab or structural deck. Dry weight of the sauna is approx. 500KG.</li><li>• If the deck is elevated, it must be at least 3000W x 2500D</li><li>• If placing on pavers they must be on a solid base, not a sand base.</li><li>• If pavers or slab are at ground level the base can be smaller (2000mm x 2000mm)</li><li>• Sauna can normally be back against a wall or fence once assembled, so long as the surface allows for it.</li></ul>
<b>Clearance</b>	<ul style="list-style-type: none"><li>• There must be at least 500mm of clearance either side, the front and the rear to allow for assembly, this includes foliage.</li><li>• Door extends a further 600mm from the front when fully open.</li></ul>

# Caring For Your Sauna

## Tips for all saunas

- Always put a towel on the bench and a towel on the floor
- Wipe down the sauna including glass with water or a natural cleaner
- Oil the bench and base on the inside of the sauna with a VOC free product for an additional layer of protection
- Keep the door open for 15 minutes after your session

## For the Outdoor Barrel Sauna only

- Oil the exterior timber with a natural decking oil every 6-12 months
- Check the tension of the steel straps and tighten when necessary





**Get In Touch.**

We're always here to help

021 770 929

[hello@foundspace.co.nz](mailto:hello@foundspace.co.nz)

[foundspace.co.nz](https://foundspace.co.nz)

Sauna Service

[foundspace.co.nz/serviceticket](https://foundspace.co.nz/serviceticket)

