

GOODWE

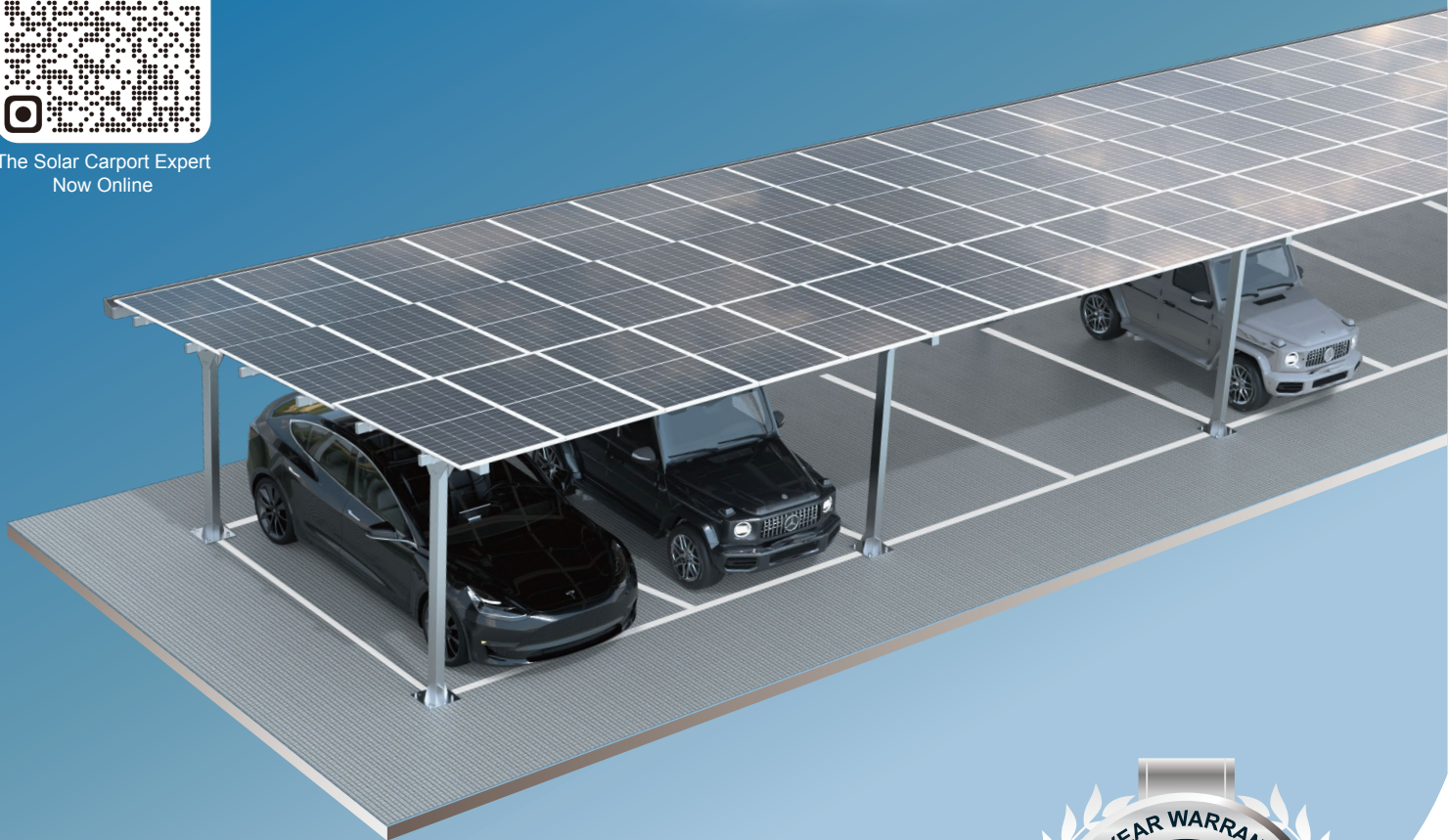
Engineered by  UMAX

STRIX SERIES

Modular Light Steel Commercial Solar Carport



The Solar Carport Expert
Now Online

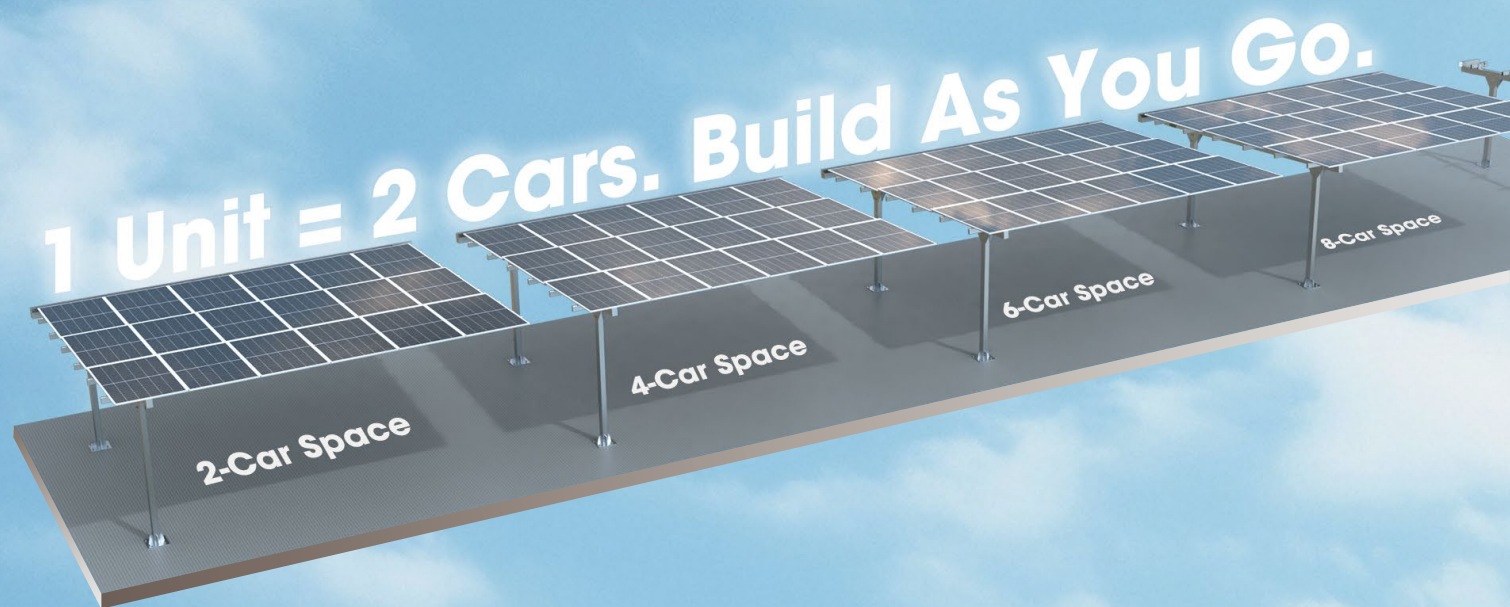


**Reliable Structure,
Efficient Installation, and Optimised Delivery**

Powered by Umax OrderLink, your platform for smarter solar carport projects.

Register now at  www.umaxenergy.com/orderlink and enjoy exclusive partner benefits.

Expand Easily. Two Cars Each Module.



Certified & Compliant

Complies with local standards Certified solar panel system



Modular & Scalable Design

Standardised layout Flexible project configurations



Fast Design & Installation

Quick quotation process Streamlined onsite setup



Simplified Structural System

No field cutting or welding Fewer SKUs, faster logistics



Integrated Waterproof Panels

Overlapping panel system Built-in drainage channels



Durable Light Steel Structure

Strong and corrosion-resistant Long design service life



Container-Friendly Design

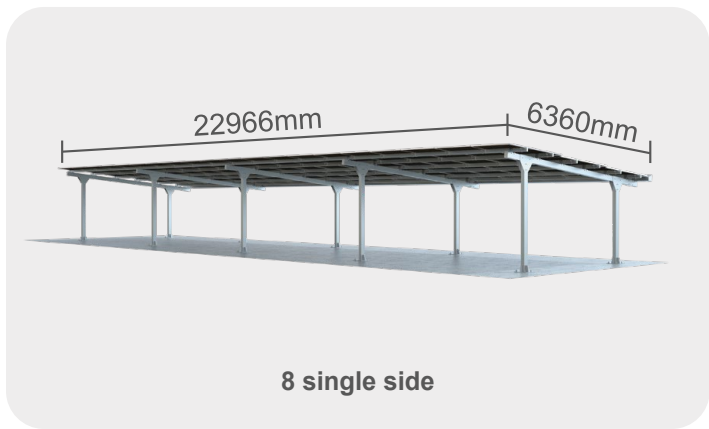
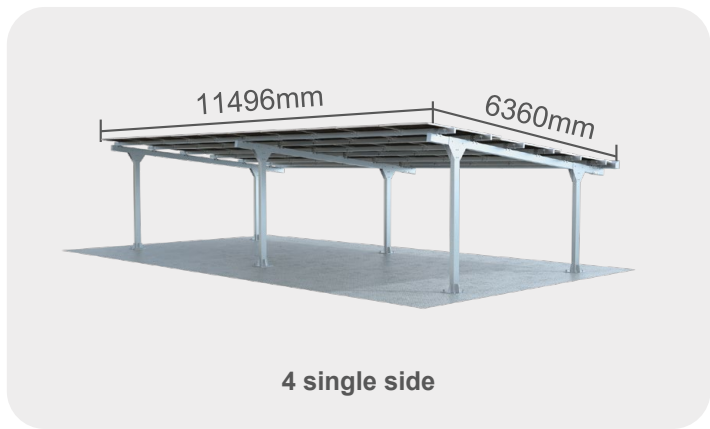
Standard-length parts Fit 20ft containers for export



Short Lead Time

Standard production model Fast manufacturing and delivery

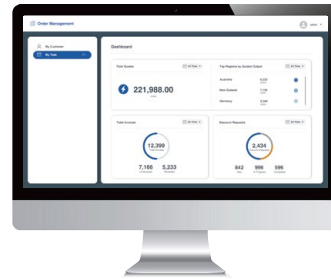
Structural Parameters	
Material	Light steel
Structure System	Modular bolt-connected frame (2-car per unit)
Design standards	AS/NZS1170 & AS4100(AU) Adaptable to local codes
Wind Load Capacity	Region A,B&C Configurable per site
Transport	20ft container-ready Compact and export-friendly
Design Life	25 Years



Car space	Configuration	System size	No. of Panels	Structure Width	Total Panel Width
4	single 4	16.05kW	30	11200mm	11496mm
	Double 4x2	32.1kW	60		
6	single 6	24.075kW	45	16800mm	17231mm
	Double 6x2	48.15kW	90		
8	single 8	32.1kW	60	22400mm	22966mm
	Double 8x2	64.2kW	120		
10	single 10	40.125kW	75	28000mm	28701mm
	Double 10x2	80.25kW	150		
12	single 12	48.15kW	90	33600mm	34436mm
	Double 12x2	96.3kW	180		

Umax Online Partner Platform

Visit www.umaxenergy.com/orderlink - everything you need to quote, configure, and manage your solar carport projects, all in one place.



Instant Project Quotation

Generate fast, accurate pricing for modular systems



Carport Configurator Tool

Design by car spaces, layout, or site constraints



System Sizing Calculator

Auto-calculate panels, power, and structure sizing



Logistics & Packing Insights

View shipping volumes, packaging specs, and container fit



Partner Order Dashboard

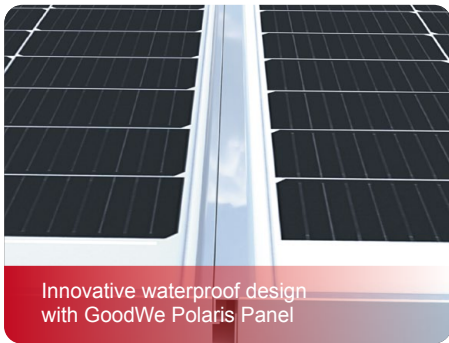
Track project status, quotes, and shipments



Exclusive Market Resources

Access pricing tiers, sales tools, and support materials

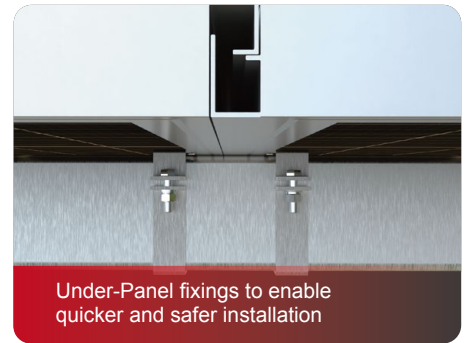
Structure Details



Innovative waterproof design with GoodWe Polaris Panel



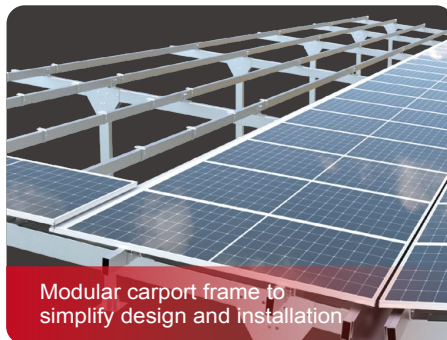
Overlapping installation to prevents water ingress



Under-Panel fixings to enable quicker and safer installation



Bolt-Only connections
No on-site welding required



Modular carport frame to simplify design and installation



Integrated water management to suit various site conditions



Unit L, 61-65 Roberts Rd, Greenacre, NSW 2190



www.umaxenergy.com



info@umaxenergy.com | carport.pvbm@goodwe.com



en.pvbm.com



1300950868



GoodWe



Umax Solar carport