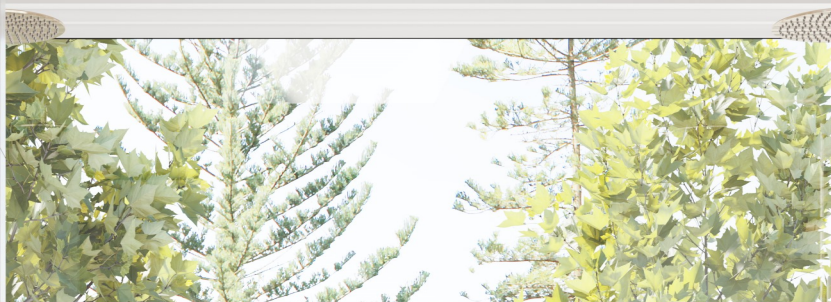




# Wet Area Solutions (Aust) Pty Ltd

Proudly Australian



Suppliers of a range of unique solutions for protecting wet areas in domestic and commercial construction

- Solid Surface Shower Bases
- Solid Surface Vanity Tops
- Solid Surface Shower Niches
- Tile-Over Shower Trays

Mt Carrara - Shower base, niche and vanity top with 2 integrated Opal basins



# Solid Surface

## The safe alternative to engineered stone

Made from pure acrylic and natural minerals

SAFE - 100% Crystalline silica free



Mt Vancouver- Shower base

# Solid Surface

## Add a touch of luxury to your bathroom

### Features and Benefits

- **Non-Porous** - Solid surface is 100% non porous, liquid, stains and germs cannot penetrate.
- **Hygienic** - Does not support the growth of mould or bacteria.
- **Seamless Joins** - Seamless surface joints with no crevices to trap bacteria or dirt.
- **Easy Care** - Easy to clean, stain and slip resistant.
- **High Quality/Safe** - Solid Surface is made from an advanced blend of natural minerals, pigments and acrylic resin and does not contain crystalline Silica.

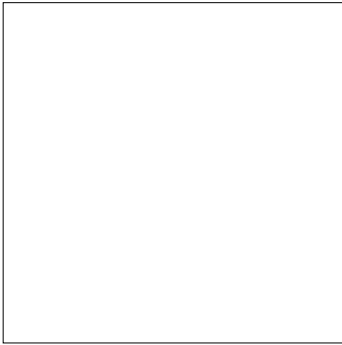


Polar Mist- Shower base

# Solid Surface

## Shower Bases - Vanity Tops - Niches

### Colour Options Available



Snow White



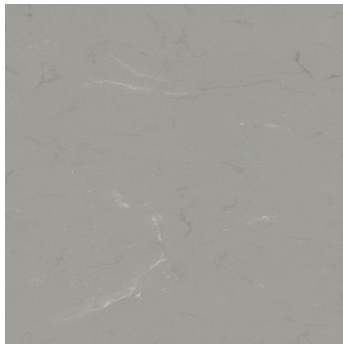
Light Grey

All our solid surface products are made using Meganite®, a 100% silica free premium solid surface that replicates the look and feel of natural stone.

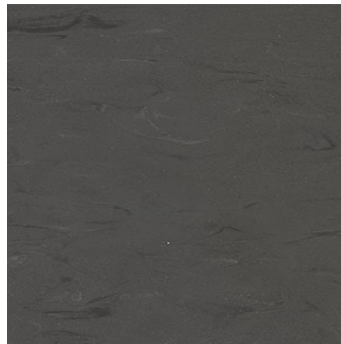
**MEGANITE®**



Modern Concrete  
\*\*contains veining



Shadow Concrete  
\*\*contains veining



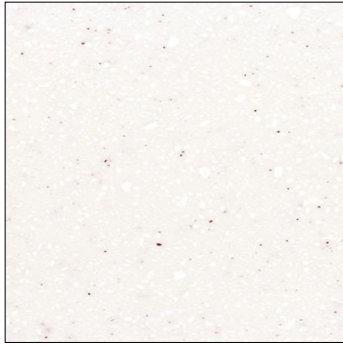
Charcoal Concrete  
\*\*contains veining



Crater Rock  
\*\*contains veining



Hazel Cream  
\*\*contains veining



Polar Mist



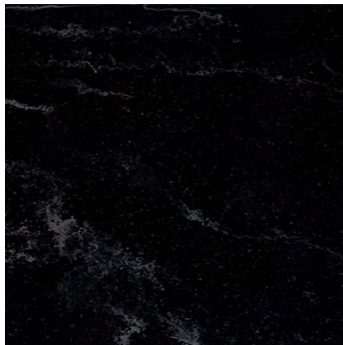
Dark Jet Black



Winter Boulder



Mt. Carrara  
\*\*contains veining



Mt. Vancouver  
\*\*contains veining

#### NOTE

Actual colour may vary slightly from images

Some colours contain veining (\*\*as indicated)

In some instances, as in large bases the joining of the product may show a break in the design at join (similar to stone)

Please note the join is still seamless, this is a visual deviation only

# Solid Surface Shower Bases Custom Made to Order

At only 22mm high our Shower Bases are among the world's thinnest but are extremely resilient and strong. They are designed to create a seamless look from your floor to your shower base.

We can also custom make a matching shower niche if ordering a shower base or vanity top.

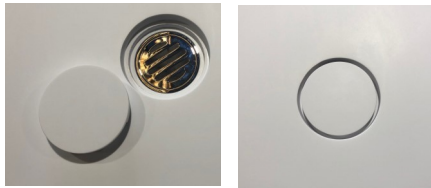
**Choose size** - We can make any size up to 1000 x 1500

**Choose outlet position** - Outlet can be placed almost anywhere

**Choose lips** - Wall lips or screen lips will be manufactured on your chosen sides

**Supplied with** - White or chrome plated outlet.

Matching round or square  
flush cap available as optional extra  
(flush caps require smart-pan for concrete substrate)



**Charcoal Concrete** - Shower base, 2 niches and vanity top with 2 integrated basins

# Solid Surface Vanity Tops Custom Made to Order

Choose your cabinetry and we can custom make a vanity top in your chosen colour and size.

Tops can be supplied with or without integrated basin/s. Basins available in Snow White only.

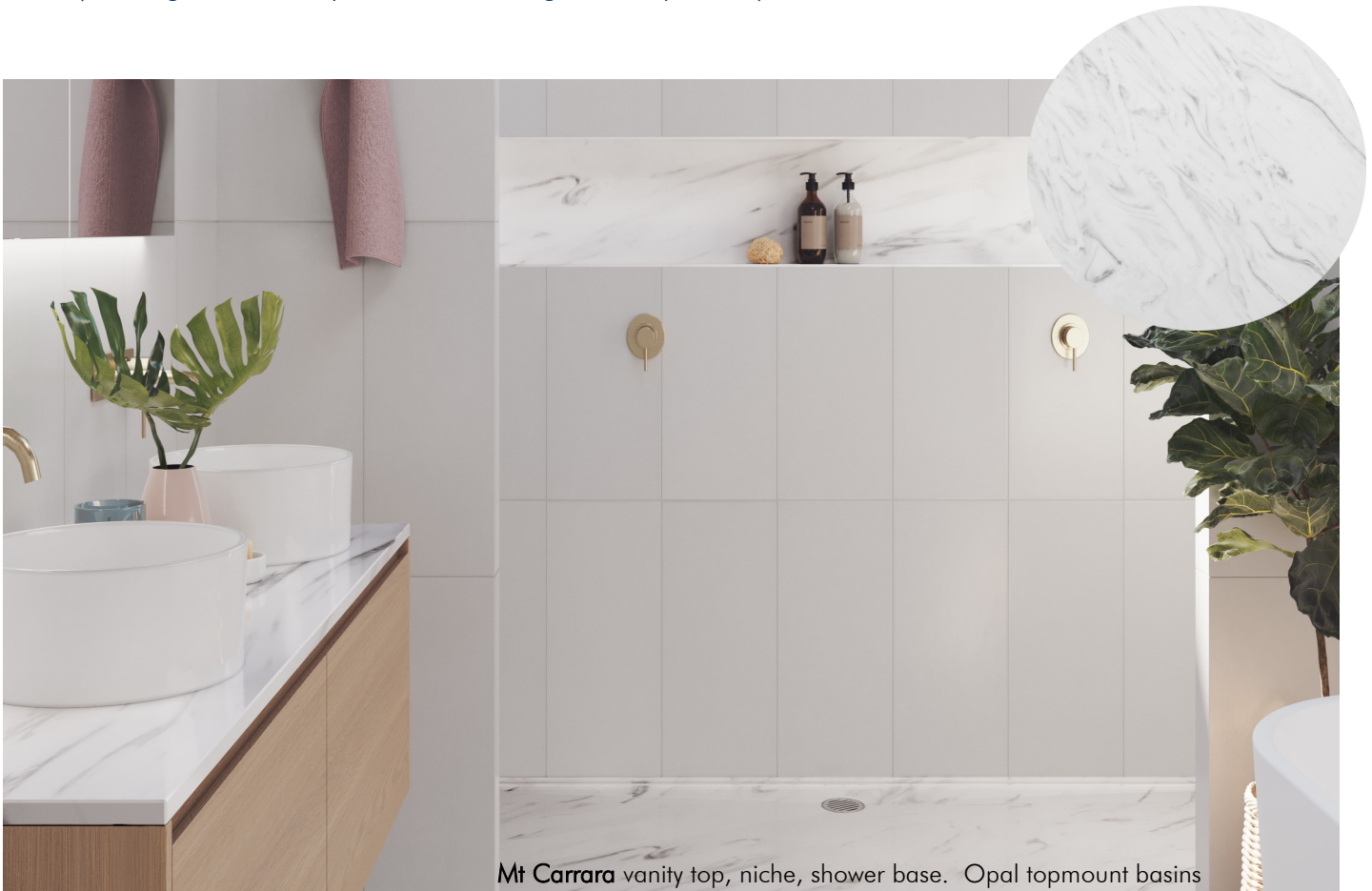
All basins are supplied with full accessory kits and a pop up chrome Lira Universal Waste.

Undermount basins come with overflow kits or have an inbuilt system and all fittings comply with Australian Standards.

Matching custom made niche/s are also available if ordering a vanity top.

For a quote please complete our quote request/order form.

Note: Basins are priced dependent on size/style. The number following the basin name indicates price level (1 being the least expensive, 10 being most expensive).



Mt Carrara vanity top, niche, shower base. Opal topmount basins

## Topmount Basins - White



Opal- 10

Internal measurements (mm):  
**400(w) x 400(l) x 125(d)**

Configuration: **Topmount**



Diamond - 9

Internal measurements (mm):  
**520(w) x 296(l) x 125(d)**

Configuration: **Topmount**



Topaz - 8

Internal measurements (mm):  
**375(w) x 375(l) x 130(d)**

Configuration: **Topmount**

# Solid Surface Vanity Tops Custom Made to Order

## Undermount Basins - White



Tourmaline



### Tourmaline - 4

Internal measurements (mm):  
**495(w) x 310(l) x 80(d)**

Configuration: **Undermount**



### Moonstone - 2

Internal measurements (mm):  
**566(w) x 412(l) x 193(d)**

Configuration: **Undermount**



### Dolomite - 3

Internal measurements (mm):  
**538(w) x 340(l) x 161(d)**

Configuration: **Undermount**



### Zircon - 7

Internal measurements (mm):  
**520(w) x 296(l) x 125(d)**

Configuration: **Undermount with  
inbuilt overflow**



### Halite - 6

Internal measurements (mm):  
**375(w) x 375(l) x 130(d)**

Configuration: **Undermount with  
inbuilt overflow**



### Quartz - 5

Internal measurements (mm):  
**370(w) x 370(l) x 120(d)**

Configuration: **Undermount with  
acrylic waste cover**



### Agate - 1

Internal measurements (mm):  
**418(w) x 328(l) x 145(d)**

Configuration: **Undermount**



Agate

## Tile-Over Shower Trays



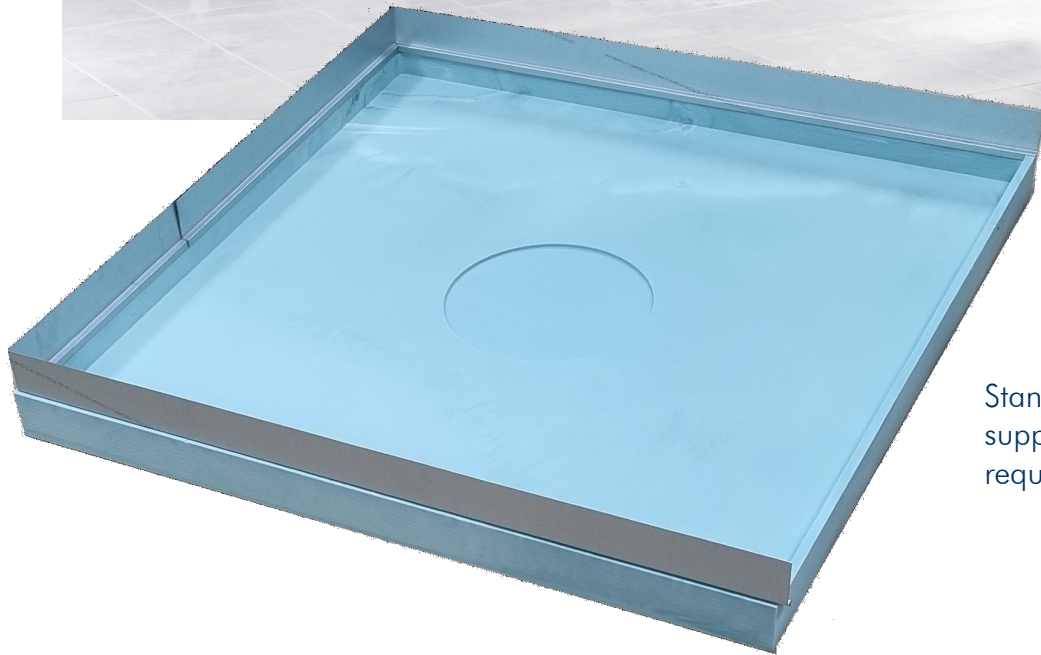
# Tile-Over Shower Trays

## 100% Leak Proof - Your Insurance

One piece - NO JOINS to fail and cause leakage

Unique 'lip/flashing' design - Machined in fall to waste

CUSTOM sizes available — up to 1150x1950mm



Standard Waste outlet kit  
supplied with all trays unless  
requested otherwise

All tile-over trays are one piece with no joins and have a machined-in fall to the waste.

They are supplied with 4 wall lips as pictured. For level entry trim off lips not required.

Flashing for 3 sides is supplied. Trim where necessary, only required for wall sides.

The machined recess for the waste is larger than the puddle flange supplied. This is to create a bit of flexibility for the placement of the outlet.

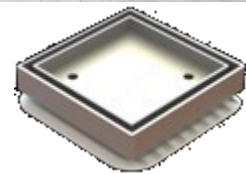
# Tile-Over Shower Trays

## Outlet Options



Square chrome outlet

- supplied as standard with all trays
- Adjustable height waste 80 x 80mm outlet kit
- \*\*Vinyl waste available on request when ordering



Square tile-in waste

- available as optional extra on request at time of ordering
- High quality lowline tile-in waste kit with leak control flange



Channel outlet tray supplied with

- Drain tray
- Tile-in or patterned insert



# Tile-Over Shower Trays



- Extremely strong - Lightweight - Maintenance free
- Easy to install - simplified plumbing connection - non check-in
- Manufactured with wall lips (easily trimmed off for multiple side level entry)
- Suitable for masonry, timber, cfc or steel frame
- AS3740-2021 compliant

**IMPORTANT -** Please consider your measurements carefully prior to placing your order as custom made tile trays cannot be returned  
Customer name (please print) \_\_\_\_\_ Customer signature \_\_\_\_\_

**TRAY SIZE REQUIRED**

Required LENGTH SIDE 1 \_\_\_\_\_ mm  
Required WIDTH SIDE 2 \_\_\_\_\_ mm

**OUTLET POSITION REQUIRED**

Use an **X** to indicate approximate placement of centre of outlet on diagram and specify exact position below. Edge of tray to centre of outlet must be minimum 150mm

Distance from **SIDE 1** to centre of outlet \_\_\_\_\_ mm

Distance from **SIDE 2** to centre of outlet \_\_\_\_\_ mm

**FLASHING REQUIRED**

Side 1 ☐ Side 2 ☐ Side 3 ☐ Side 4 ☐

Choose maximum 3 sides

**OUTLET REQUIRED -**

**Standard** Suits Tiling ☐  
Suits Vinyl ☐

Puddle flange and outlet kit as pictured will be supplied with tray



**Square Tile-In** ☐

New low profile stainless steel square tile-in waste kit, includes puddle flange (optional extra)



**Channel**

Choose length and insert type

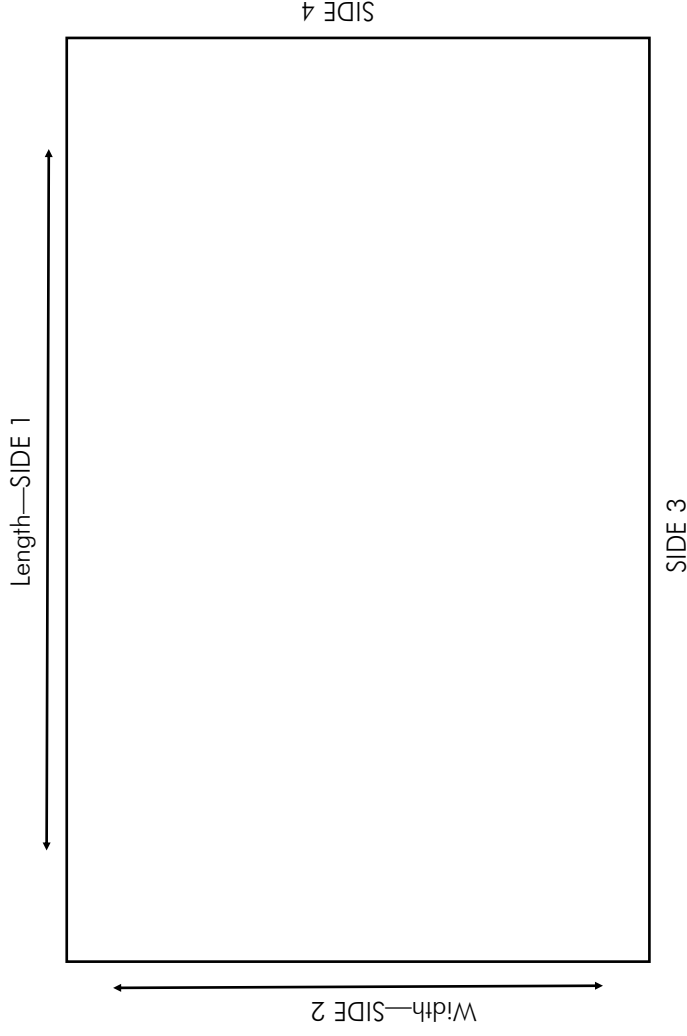
800mm (waste outlet centred at 400mm) ☐

minimum tray width 900mm ☐

1100mm (waste outlet centred at 550mm) ☐

minimum tray width 1200mm ☐

Tile-In Insert ☐  
Patterned Insert ☐





**Wet Area Solutions**  
(Aust) Pty Ltd

# Order form/Quote request Custom Solid Surface Vanity Top

Print clearly and complete all sections carefully

## MUST BE SPECIFIED

QUOTE REQUEST ☐

ORDER FORM ☐

Email address for quote to be sent to \_\_\_\_\_

Email this form to - sales@wetareas.com.au - For queries call - 1300 526 879

## IMPORTANT

Please consider these options carefully prior to placing your order as custom made vanity tops cannot be returned

Customer name (please print) \_\_\_\_\_ Customer signature \_\_\_\_\_

## CHOSEN COLOUR

Snow White	Modern Concrete	Crater Rock	Hazel Cream
Light Grey	Shadow Concrete	Winter Boulder	Mt. Carrara
Dark Jet Black	Charcoal Concrete	Polar Mist	Mt. Vancouver

## VANITY SIZE REQUIRED (at outside edge)

Required LENGTH SIDE 1 \_\_\_\_\_ mm

Required DEPTH SIDE 2 \_\_\_\_\_ mm

Depth — SIDE 2

Length — SIDE 1



CHOSEN BASIN (if required - white only) \_\_\_\_\_ QTY REQ'd \_\_\_\_\_

### Undermount Options

Agate Quartz  
Dolomite Tourmaline  
Halite Zircon  
Moonstone

### Topmount Options

Opal  
Diamond  
Topaz

### Tapholes required per basin

0 ☐  
1 ☐  
2 ☐  
3 ☐

See over for diagrams/sizes

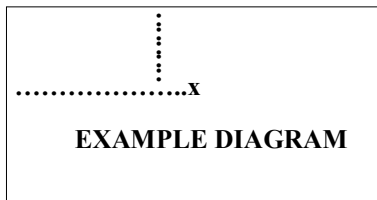
## BASIN OUTLET POSITION - IMPORTANT

Use an X and lines on diagram above to indicate approximate placement of outlet/s as per diagram and specify exact position below - see over for basin sizes

### BASIN 1

Distance from  
SIDE 2 to  
centre of outlet  
\_\_\_\_\_ mm

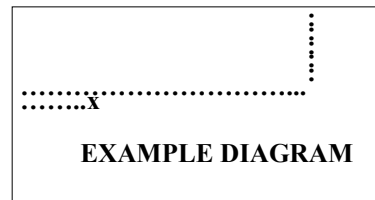
Distance from SIDE 1 to  
centre of outlet \_\_\_\_\_ mm



### BASIN 2

Distance from  
SIDE 2 to  
centre of outlet  
\_\_\_\_\_ mm

Distance from SIDE 1 to  
centre of outlet \_\_\_\_\_ mm





**Wet Area Solutions**  
**(Aust) Pty Ltd**

## Order form for Solid Surface Shower Base

Print clearly and complete all sections carefully - For matching Shower Niche see over page

### IMPORTANT

Please consider these options carefully prior to placing your order as custom made bases cannot be returned

Customer name (please print) \_\_\_\_\_

Customer signature \_\_\_\_\_

### BASE SIZE REQUIRED (at outside edge)

Required **LENGTH SIDE 1** \_\_\_\_\_ mm

Required **WIDTH SIDE 2** \_\_\_\_\_ mm

### OUTLET POSITION - IMPORTANT

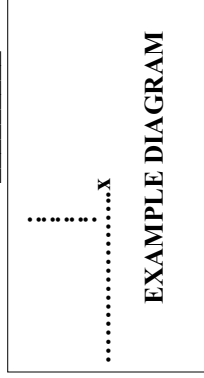
Use an X and lines on large diagram to indicate approximate placement of outlet) as per diagram and specify exact position below

Centre of outlet must be minimum 120mm from edge of base

Distance from **SIDE 1** to

centre of outlet \_\_\_\_\_ mm

Distance from  
**SIDE 2** to  
centre of outlet  
\_\_\_\_\_ mm



### SUBSTRATE/OUTLET TYPE

Concrete Substrate

Chrome outlet only ☐

Other Substrate

Chrome outlet ☐

White outlet ☐

Flush Cap ☐  
(optional extra)

Diagram of the shower base layout with dimensions and labels:

- Length—SIDE 1** (indicated by a double-headed arrow)
- Width—SIDE 2** (indicated by a double-headed arrow)
- SIDE 1** (left side)
- SIDE 2** (bottom side)
- SIDE 3** (right side)
- SIDE 4** (top side)
- Wall Lip ☐ (top and bottom)
- Screen Lip ☐ (left and right)

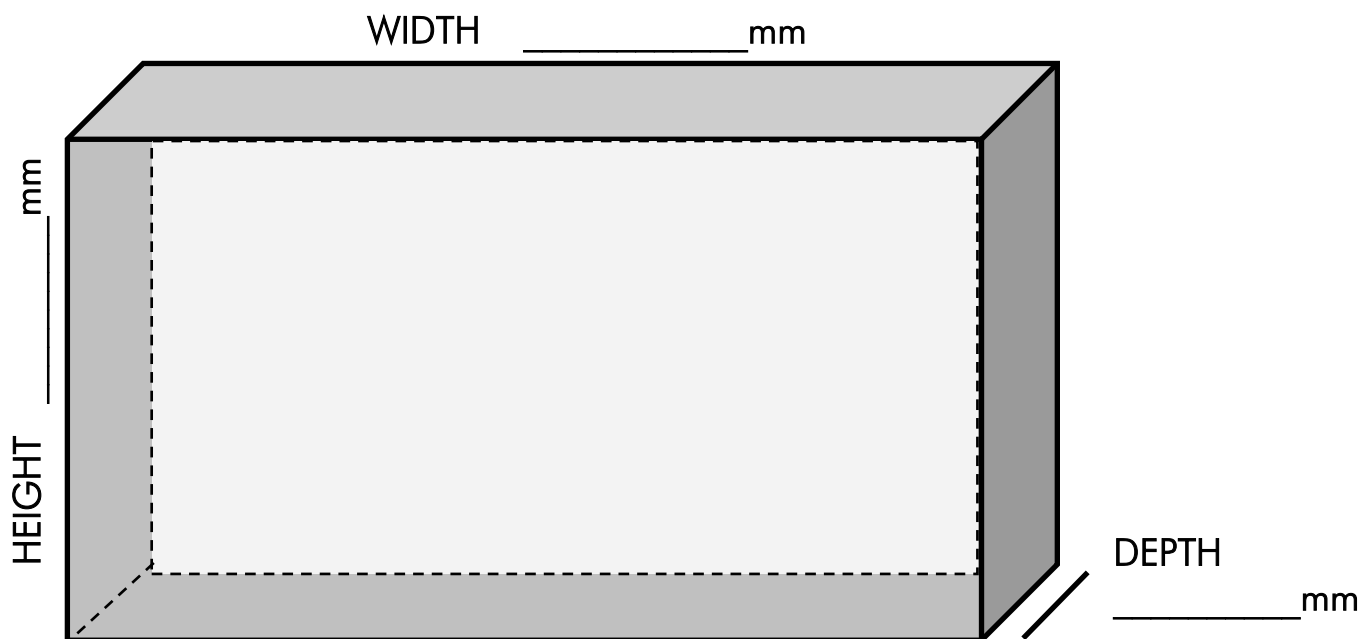
Mark which lips are required on all sides

### CHOSEN COLOUR

Snow White	Shadow Concrete	Polar Mist
Light Grey	Charcoal Concrete	Hazel Cream
Dark Jet Black	Crater Rock	Mt. Carrara
Modern Concrete	Winter Boulder	Mt. Vancouver

## Order form for custom Solid Surface Shower Niche

Only available with matching shower base or vanity top



### OPTIONS FOR STANDARD SIZE SOLID SURFACE SHOWER BASES

To be completed when ordering standard bases eg. 900x900, 900x1200, 1200x900

Please consider the diagrams below very carefully when ordering

The option required will be dependent on which side of a room the base is to be installed  
Use this diagram whether ordering a round or channel outlet base, whatever size

We need to ensure that lips are manufactured on the correct sides

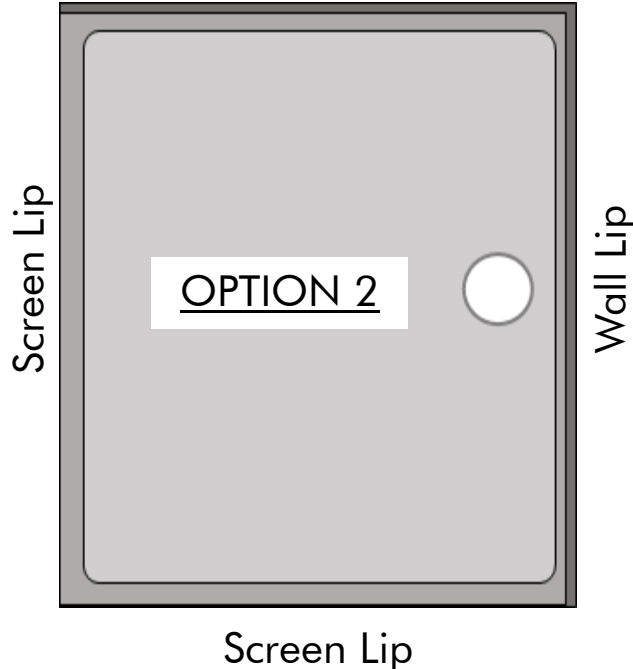
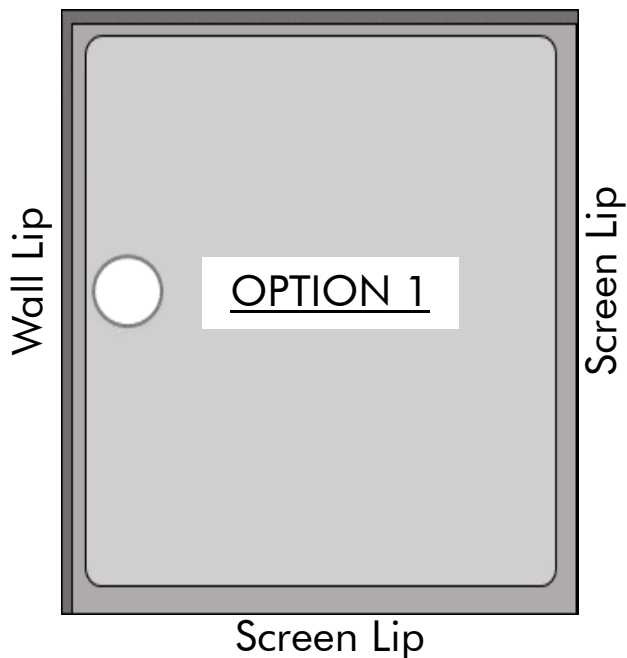
Add either 'Option 1' or 'Option 2' in the notes sections of your purchase order

Also, please advise substrate  
base will be installed on

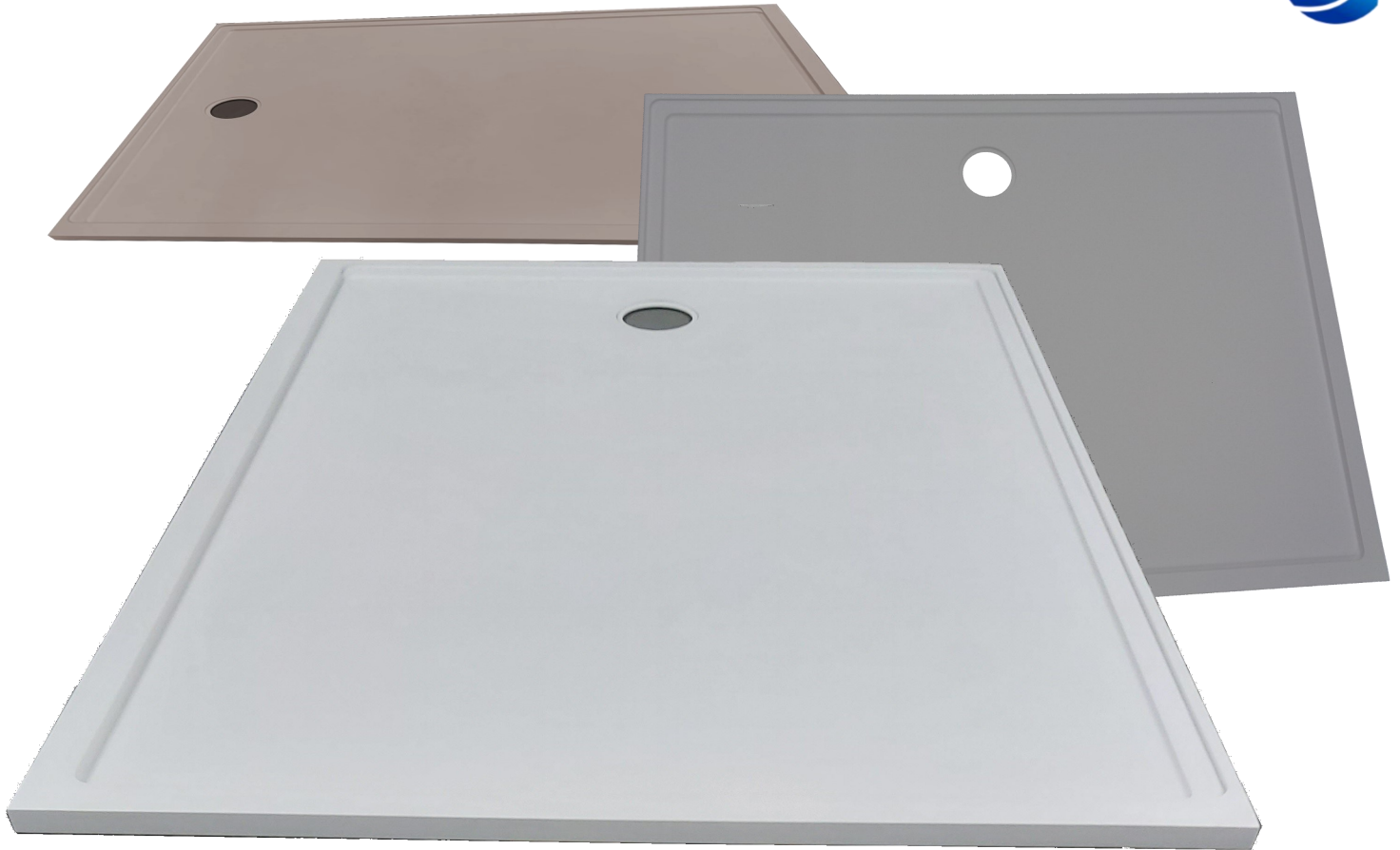
Concrete ☐  
Other ☐

Wall Lip

Wall Lip



To order or for enquiries, contact your nearest bathroom retailer



Proud members of the  
Housing Industry Association Limited



TILE-OVER TRAY SYSTEMS	
Item Code	Size/Outlet Position
103-CO-09-09	Tile-Over Tray 900 x 900 Centre Outlet
104-RO-09-09	Tile-Over Tray 900 x 900 Rear Outlet
104-RO-09-11	Tile-Over Tray 900 x 1100 Rear Outlet
104-RO-09-12	Tile-Over Tray 900 x 1200 Rear Outlet
104-RO-09-14	Tile-Over Tray 900 x 1400 Rear Outlet
104-RO-09-17	Tile-Over Tray 900 x 1700 Rear Outlet
103-CO-10-10	Tile-Over Tray 1000 x 1000 Centre Outlet
103-RO-10-10	Tile-Over Tray 1000 x 1000 Rear Outlet
104-RO-10-15	Tile-Over Tray 1000 x 1500 Rear Outlet
103-CO-12-09	Tile-Over Tray 1200 x 900 Centre Outlet
103-RO-12-09	Tile-Over Tray 1200 x 900 Rear Outlet
104-CU-10-10	Tile-Over Tray Custom up to 1000 x 1000
104-CU-10-15	Tile-Over Tray Custom up to 1000 x 1500
104-CU-12-20	Tile-Over Tray Custom up to 1150 x 1950
902-03-00-05	Square Tile-In Outlet Kit - optional extra

SOLID SURFACE SHOWER BASES	
ORDER or OPTION FORM REQUIRED	
Item Code	Size/Outlet Position
202-LH-09-09	White Solid Surface Base 900 x 900 Rear Outlet
202-RO-09-12	White Solid Surface Base 900 x 1200 Rear Outlet
202-RO-12-09	White Solid Surface Base 1200 x 900 Rear Outlet
244-LH-09-09	White Solid Surface Base 900 x 900 Rear Channel Outlet
244-RO-09-12	White Solid Surface Base 900 x 1200 Rear Channel Outlet
244-RO-12-09	White Solid Surface Base 1200 x 900 Rear Channel Outlet
202-CU-10-10	White Solid Surface Custom Base up to 1000 x 1000
202-CU-10-15	White Solid Surface Custom Base up to 1000 x 1500
203-CC-10-10	Colour Solid Surface Custom Base up to 1000 x 1000
203-CC-10-15	Colour Solid Surface Custom Base up to 1000 x 1500
203-NC-00-00	Shower Niche (POA)
203-VT-00-00	Vanity Top (POA)
203-FC-00-00	Flush Cap optional extra

TILE-OVER TRAY SYSTEMS	
Item Code	Size/Outlet Position
504-TI-09-09	Tile-Over Tray System 900 x 900 Rear Channel Tile-In
504-TI-12-09	Tile-Over Tray System 1200 x 900 Rear Channel Tile-In
504-TI-09-12	Tile-Over Tray System 900 x 1200 Rear Channel Tile-In
504-WM-09-09	Tile-Over Tray System 900 x 900 Rear Channel Patterned
504-WM-12-09	Tile-Over Tray System 1200 x 900 Rear Channel Patterned
504-WM-09-12	Tile-Over Tray System 900 x 1200 Rear Channel Patterned