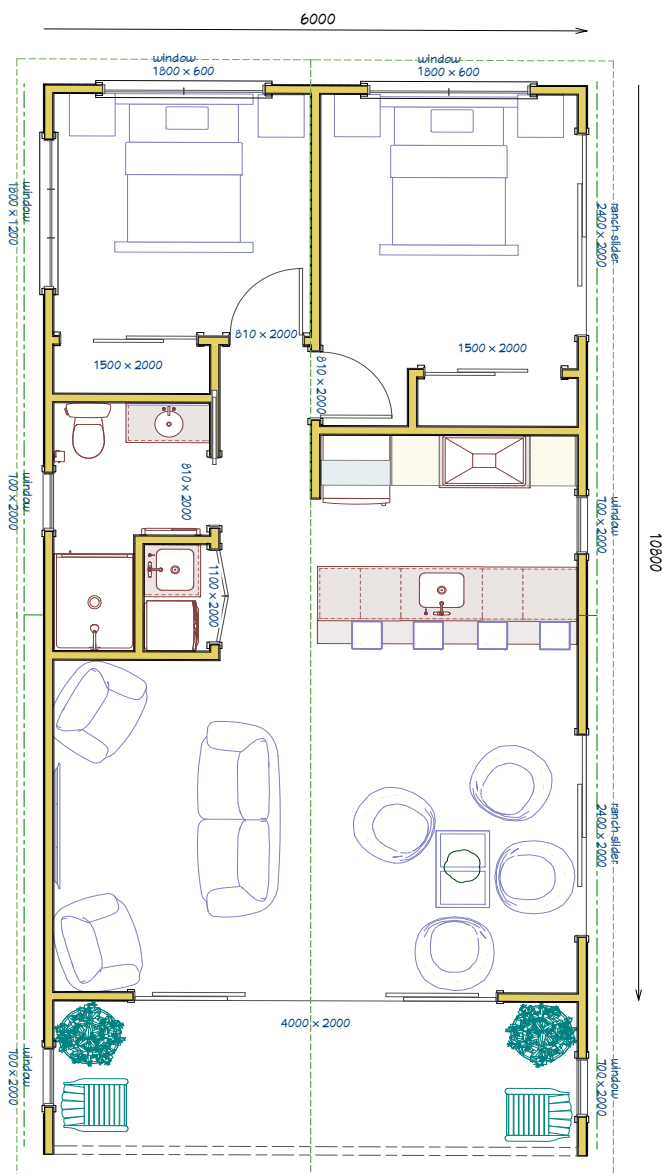


# Dreamwood Series - Plan 10

2 Bedroom - 65m<sup>2</sup>









Artists impression only



## Features:

- Durable solid wood interior
- Corrugated iron & cedar board
- Open plan living
- Transportable design can accommodate most sites
- Double glazed windows & doors

 1x Lounge	 2x Bedrooms
 1x Bathroom	 1x Toilet
 1x Laundry room	 1x Dining

**TOUCHWOOD®**

*Naturally*

© Copyright Touchwood Solidwood Homes Limited 2021

solid wood homes within your reach

[www.touchwoodsolidwoodhomes.co.nz](http://www.touchwoodsolidwoodhomes.co.nz)

