

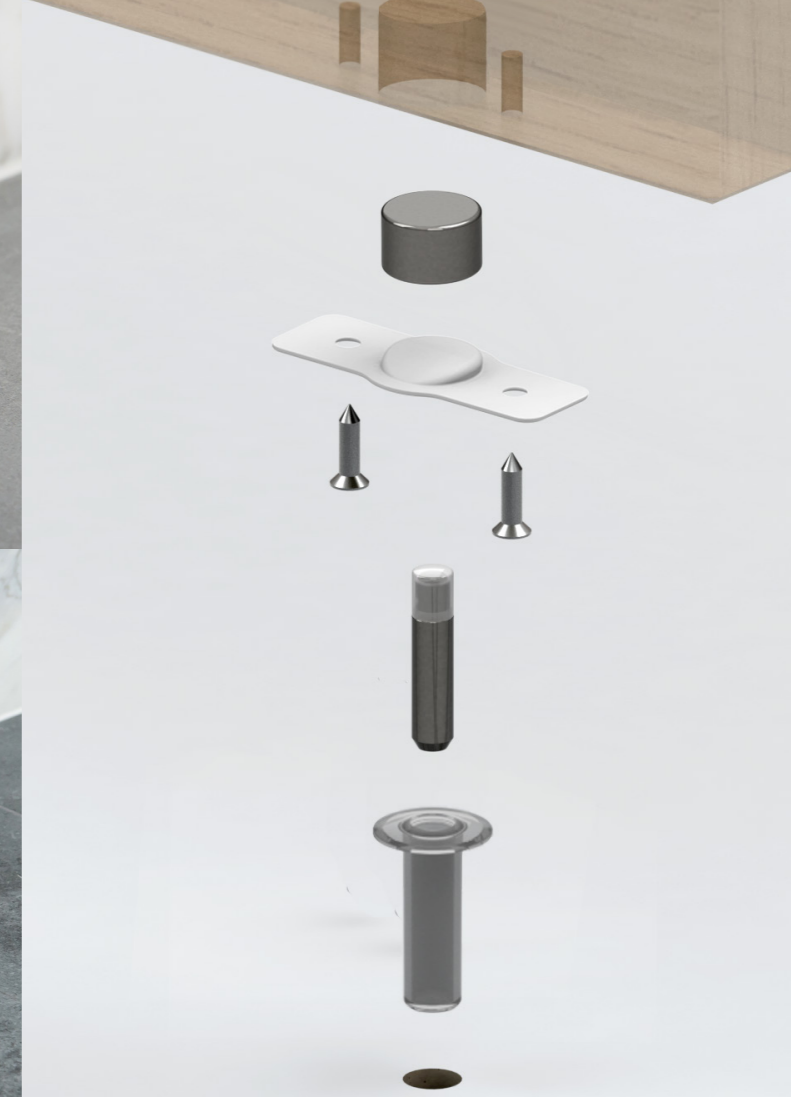
**STRONG.
VERSATILE.
SECURE.**



**FANTOM
HARDWARE
PRODUCT
CATALOGUE**

FANTOM
Hardware

FANTOM DOORSTOP



**NO TRIP
HAZARD.
FULLY
CONCEALED.
HOLD-OPEN
FEATURE.**

DESCRIPTION

The Fantom Doorstop is a fully concealed magnetic doorstop that includes a hold-open function. The Fantom Doorstop system provides a high quality innovative solution for all project application requirements, alleviating trip hazards whilst maintaining a modern desirable finish. The concealed rare-earth magnet technology ensures exceptional mechanical functionality.

There is a Fantom Doorstop for most doorstop applications, including:

- Internal hollow and solid doors (as shown)
- Sliding / Barn doors
- Pivot doors
- Aluminium and hollow extrusion doors (as shown)
- Fire doors
- Entrance/Security doors
- (see Defender)

SKU'S

Trade packaging:

Clear	TRADE-CLEAR-NYLON
Black	TRADE-BLACK-NYLON
White	TRADE-WHITE-NYLON
Satin	TRADE-SATIN-NYLON
Chrome	TRADE-CHROME-NYLON
Brass	TRADE-BRASS-NYLON

Retail packaging:

Clear	CLAM-CLEAR-NYLON
Black	CLAM-BLACK-NYLON
White	CLAM-WHITE-NYLON
Satin	CLAM-SATIN-NYLON
Chrome	CLAM-CHROME-NYLON
Brass	CLAM-BRASS-NYLON



FANTOM BARN DOOR

FANTOM
BARN DOOR



NO TRIP
HAZARD.
FULLY
CONCEALED.
HOLD-OPEN
FEATURE.

DESCRIPTION

The Fantom Barn Door's functionality is the same as the original Fantom, however the Barn Door Fantom has the orientation of the strike zone changed to suit a sliding door. The striker plate design allows for smooth activation/deactivation and can be used in both the open and close positions as a doorstop.

- Suitable for use in both the open and closed positions
- Soft close feature
- Smooth activation and deactivation
- Provides a firm hold at the closed position
- Removes door 'wobble'

SKU'S

Trade packaging:

Clear	TRADE-BARN-CLEAR
Black	TRADE-BARN-BLACK
White	TRADE-BARN-WHITE
Chrome	TRADE-BARN-CHROME
Satin	TRADE-BARN-SATIN
Brass	TRADE-BARN-BRASS

Retail packaging:

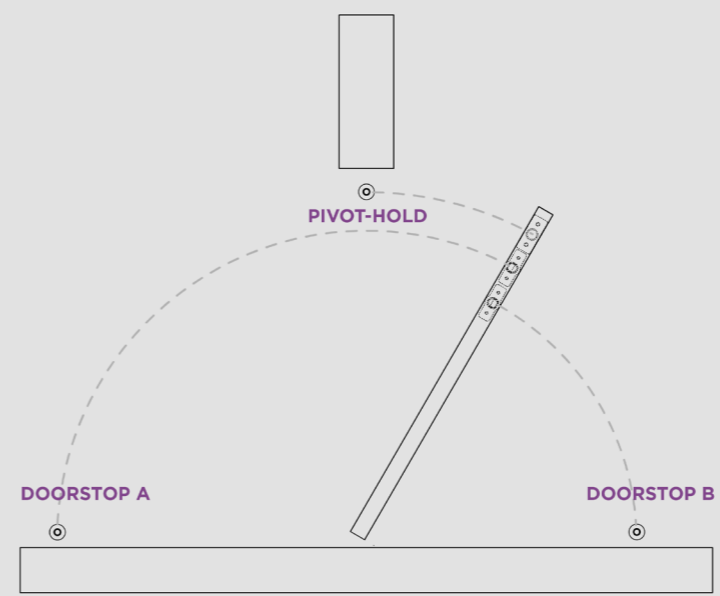
Clear	CLAM-BARN-CLEAR
Black	CLAM-BARN-BLACK
White	CLAM-BARN-WHITE
Chrome	CLAM-BARN-CHROME
Satin	CLAM-BARN-SATIN
Brass	CLAM-BARN-BRASS



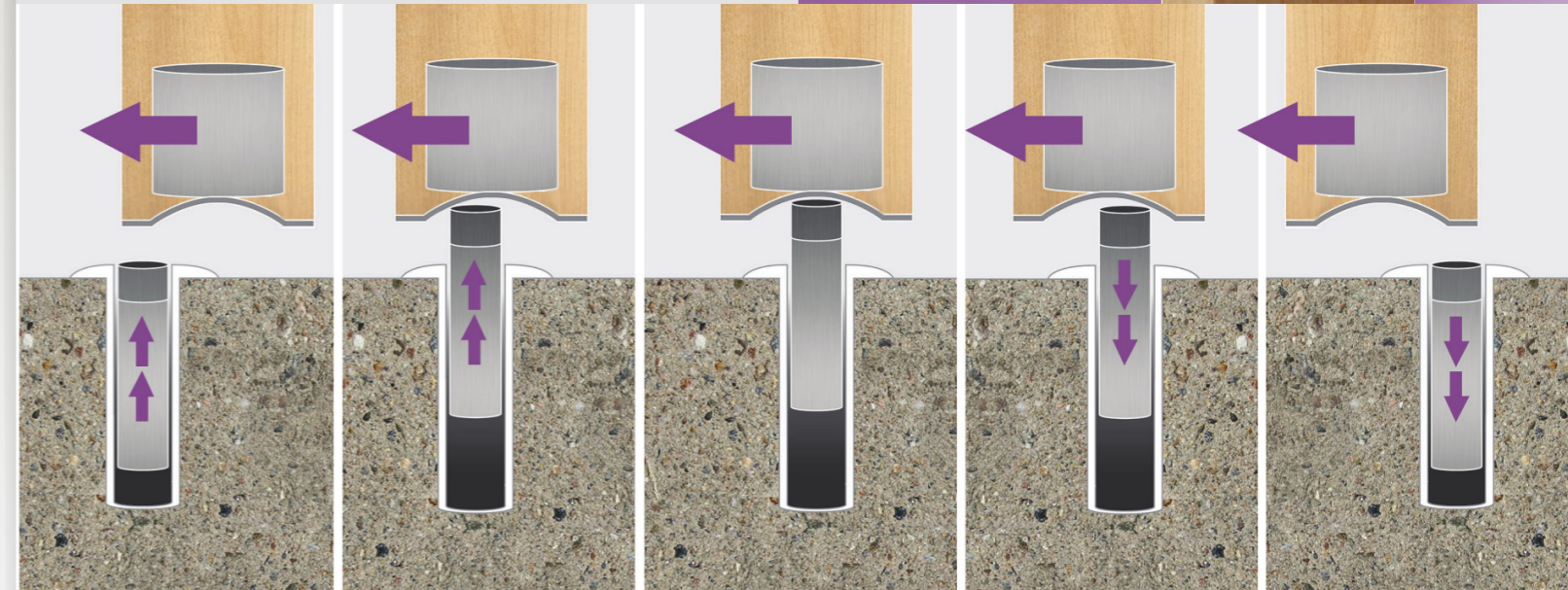
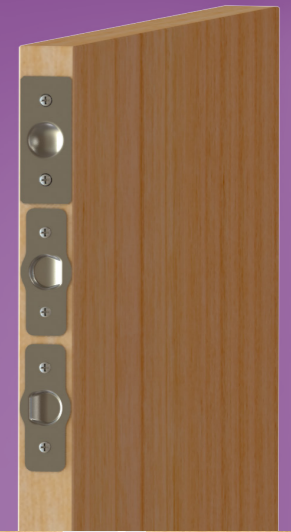
FANTOM
PIVOT
DOOR-HOLD



NO TRIP
HAZARD.
FULLY
CONCEALED.
HOLD-OPEN
FEATURE.



PIVOT-HOLD
DOORSTOP A
DOORSTOP B



DESCRIPTION

The Fantom Pivot door-hold, features the patented dimple and hold open design but no stopping lip as it's application is for use with pivot doors to allow the door to swing in both directions but still locate the door and hold it in the closed location. In double doors, this can be used on the active door to hold it shut and allow it to swing both directions, and also the inactive door instead of face fixed drop bolts. Fantom Pivot can be used alongside Fantom Doorstop to offer an all round pivot door solution which will hold the door in the closed position but also as a doorstop when the door is being used.

SKU'S

- Trade packaging:
- Clear TRADE-CLEAR-PIVOT
 - Black TRADE-BLACK-PIVOT
 - White TRADE-WHITE-PIVOT
 - Satin TRADE-SATIN-PIVOT
 - Chrome TRADE-CHROME-PIVOT
 - Brass TRADE-BRASS-PIVOT

FANTOM FIRE



DESCRIPTION

The Fantom Fire Magnetic Doorstop provides a robust, trip-hazard free doorstop solution for the residential, commercial and industrial sectors.

The flush mounted pin alleviates trip hazards whilst the specially designed face-mounted magnet housing stops the door, however, will not hold the door open when used with a door closer as to meet fire rating specifications.

FEATURES:

- Fire rated
- Flush mounted
- No trip hazard
- Rare earth magnet technology
- Stream-line modern finish
- Suitable for various fixing positions

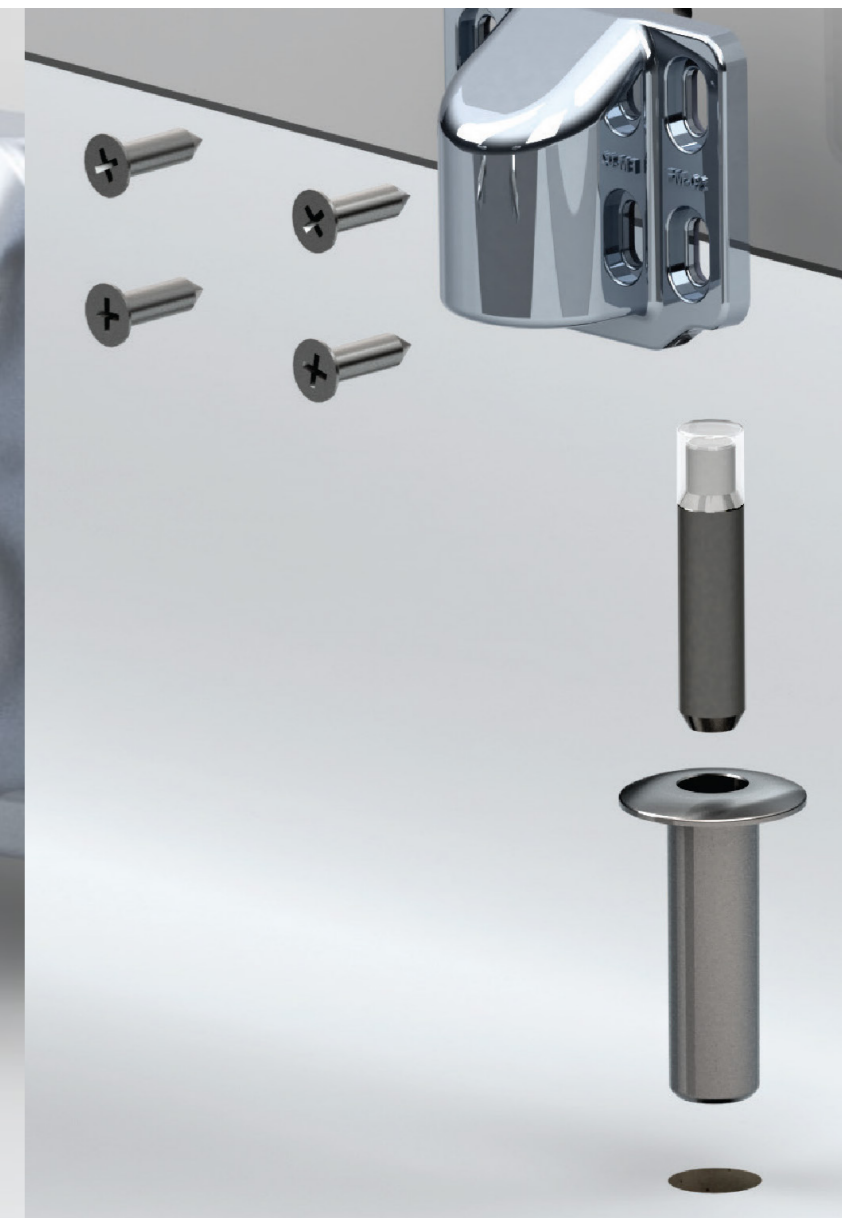
SKU'S

Clear	FIRE-CLEAR
Chrome	FIRE-CHROME
Satin	FIRE-SATIN

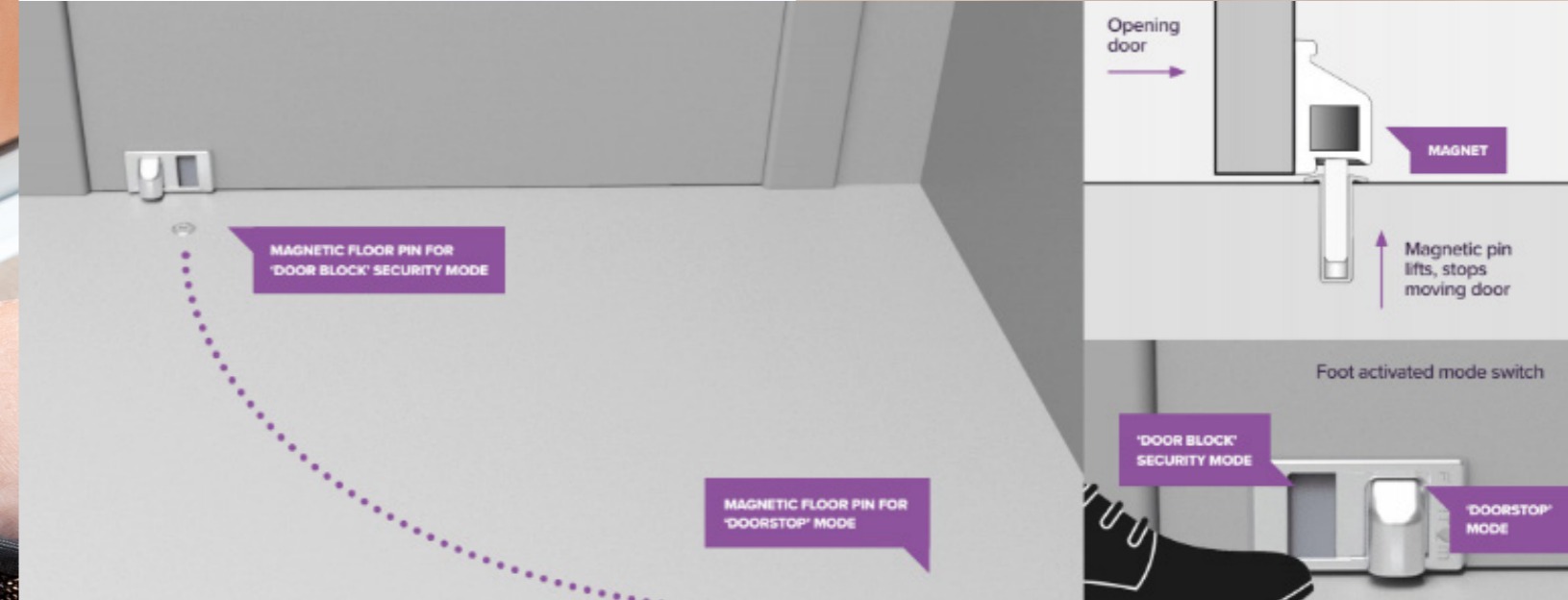
FIRE COMPLIANCE

FANTOM HARDWARE
TEST STANDARD: AS 1530.4 - 1997,
SS332: 2007 & BS476: Part22: 1987
BRANZ FAR: 4690
CERT# 257
VALID: 30 JUNE 2027

NO TRIP
HAZARD.
COMMERCIALY
FIRE-RATED.



FANTOM DEFENDER



QUICK AND EASY TO ACTIVATE AND DEACTIVATE.

DESCRIPTION

The Fantom Defender combines modern aesthetics with reliable security and smooth functionality to provide you with two functional modes.

Utilizing rare-Earth technology and a patented sliding face-mount system, the simple foot-activated Fantom Defender allows the door to be opened just enough to see who is on the other side before allowing complete access—protecting you against intruders attempting to enter your home by force.

When not being used as a security measure, the Fantom Defender is a functional, hazard-free doorstop used

to prevent the door from contacting walls and furniture, or from opening any further than desired. The Defender also features a strong “hold open” function to keep you door held in position when desired.

SKU'S

Trade packaging:
Chrome TRADE-DEFENDER-CHROME
Satin TRADE-DEFENDER-SATIN

Retail packaging:
Chrome DEFENDER-CHROME
Satin DEFENDER-SATIN



FANTOM ACCESSORIES



FANTOM INSTALLATION KIT

All tools (minus power tools) required to install the Fantom Doorstop.

SKU INSTALL-KIT



FACEMOUNT - CHROME & WHITE

Fantom Face-Mounts are designed for use when doors are already installed and the installer does not wish to take the door off, as they would with the standard Fantom Doorstop. Face-mounts are ideal for use on front doors which often have thresholds and/or weather seals

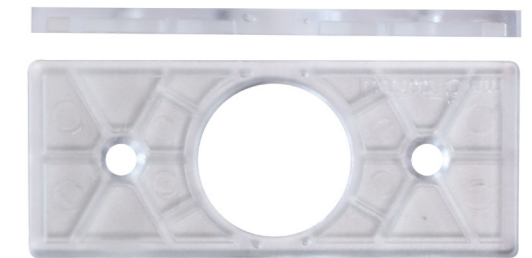
SKU FACEMOUNT-CHROME
FACEMOUNT-WHITE



MAGNET HOUSING

The magnet housing has been designed to allow installation in hollow extrusion such as aluminium or steel framed doors. It prevents the magnet from being lost inside the extrusion. Can also be used on hollow core doors if necessary.

SKU 33MAGHOU



5MM PACKER

For use when doors have a gap exceeding 10mm. The packer brings down the height of the striker plate and magnet to achieve a lower gap

SKU PACKER-5MM



14MM CARPET PUNCH

For use when installing the Fantom Doorstop in a carpeted flooring surface. The Fantom Carpet Punch allows for a clean, round 14mm hole to be punched into the carpet before drilling, removing the risk of threading the carpet with the drill bit.

SKU CARPET-PUNCH



15MM DIAMOND CORER

For use when installing the Fantom Doorstop in a tiled flooring surface. The Fantom Diamond Corer allows for a clean, round 14mm hole to be drilled into tiled surfaces. NOTE: Drill slowly, starting on a 45° angle and always use with water.

SKU DIAMOND-CORER

SHIPPING & FREIGHT INFO

PRODUCT	L	W	H	UNITS/MASTER	WEIGHTS (KG'S)	HS CODES
Fantom Trade boxes	450	400	360	80	13	8302.41.00
Fantom Clam shells	470	360	380	64	15	8302.41.00
Fantom Defender Trade	670	290	270	40	7	8302.41.00
Fantom Defender Clam	300	330	600	40	17	8302.41.00
Face mounts	405	260	120	50	3.5	7326.90.90
Carpet punch	330	150	120	55	8.75	8205.59.00
Diamond corer	300	120	110	55	1.5	8205.10.00
Install kit	345	285	325	50	12	8206.00.00
5mm Packer	260	170	70	200	1.2	3926.90.90
Bench display	235	195	125	10	6.2	3926.90.90