

Noosa Nest

This hillside holiday home floats in the treetops and laughs with the kookaburras

WORDS LOUISE SMITHERS
PHOTOGRAPHY ANDY MACPHERSON STUDIO





DETAILS

HOUSE Black Mountain House
LOCATION Black Mountain, Queensland
DATE COMMENCED September 2016
DATE COMPLETED July 2017
INITIAL BUDGET \$500,000
FINAL COST \$700,000

On a picturesque hilltop in the Noosa hinterland is Black Mountain House, the brainchild of Morriarchi Architecture and home of four boys aged between six and 13, along with their proud parents Narelle and Andrew Whatham. The Whathams were after a holiday home that communes with nature and allows them to unwind, refresh and reconnect as a family. A place overlooked by starry nights where the ubiquitous smartphone is put down and the TV switched off. They daydreamed of weekends and school holidays spent climbing trees, banging down grassy hills on homemade toboggans and admiring local creatures both winged and scaled. The brief outlined a simple minimalist home reminiscent of an old Queenslander with vintage elements, and a strong

connection to the environment with panoramic views. Deck space for days and a warm yet light and airy atmosphere were also important.

After considering smaller shed-like plans such as shipping containers and kit homes, the Whathams decided that the grandeur of the site deserved more. “We felt as though we had an obligation to honour the tranquil spot with a home that respected and complemented its natural beauty, and captured the breathtaking landscape high on the hill,” says Narelle.

The elevated property they now call their own explores minimal cantilever roof and floor forms. The clever cantilevered roof is some kind of sorcery; there are no columns supporting the roof overhang that spans 4.5m. “The engineer was a bit nervous about the structural integrity of the roof in light of the project’s

ABOVE Black Mountain House allows the Whathams to connect with nature from their tranquil Noosa hilltop

WE LOVE
THE CANTILEVERED ROOF WITH 4.5M OVERHANG



EDITOR'S FAVOURITE
THE TIMBER FLOORS
MADE FROM RECYCLED
CHINESE DOORS

location, but I knew it could be achieved based on past project experiences," recalls Chris Morrison, director and architect at Morriarchi Architecture. The balcony, unimpeded by columns or balustrades, is equally impressive. Meanwhile, a suspended floor hovers above the earth to secure a layer of protection against local wildlife.

Black Mountain House is a house for all seasons and all times. "Morning breakfasts are best spent on the entertaining deck, where the warm sun rises and the views are to die for," relates Narelle. "Afternoon naps are best on the guest deck daybed near the pool, followed by our end-of-day ritual of drinks and a cheese platter by the firepit."

ABOVE Views are unimpeded thanks to the lack of columns or balustrades

RIGHT Contemporary form is offset with the palette of stone and timber

OPPOSITE TOP Vast glass-panel windows ensure the great outdoors are never far away

OPPOSITE BELOW The intriguing timber flooring is made from recycled Chinese doors





LEFT The entertaining deck is the perfect spot to watch the sun rise
BELOW Every room in the house offers fantastic views, including each of the four bedrooms

Internally, the home is spoilt with natural beauty. Forget “a room with a view” — all the rooms have views, even the loo! The structure’s contemporary form is softened with a palette of timber and stone. Most impressive is the timber flooring, which was constructed using recycled Chinese doors. These rustic floors are visually stunning, hardy and forgiving of dirt and sand.

Vast glass-panel windows and carefully scattered framing windows capture view corridors towards landmarks and valleys in the distance. The balcony stretches around the living space and all four bedrooms provide alternative external living zones regardless of weather conditions.

The residence responds to its environment by orienting living spaces and bedrooms northwards. Building elements have been designed to regulate the surrounding environmental conditions, including the cantilevered roof overhang that provides shade to the outdoor living spaces.

Service and car accommodation can be found towards the south and south-west of the structure, buffering the internal living and bedroom areas from the western sun. Refreshing south-easterly breezes are admitted via large window and door openings in the south-facing service areas.

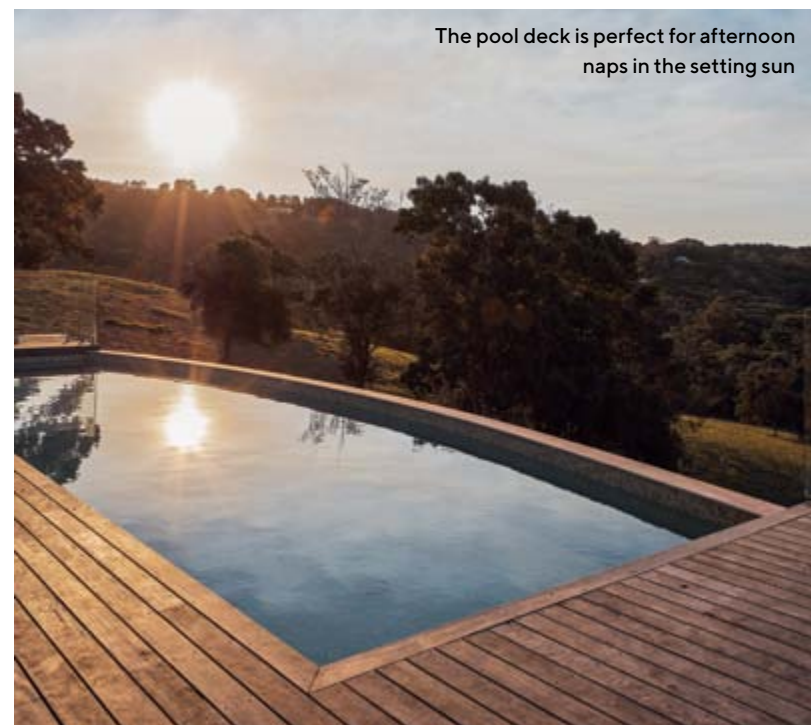
A 70,000L water tank and solar panels on the roof create a self-sufficient home. In fact, at the time of writing, the owners had yet to receive an electricity bill and only used the air conditioning a handful of times.

A prime example of how landscaping can anchor house to site is the considered garden and outdoor area. Extensive landscaping and stone retaining walls reinforce the suspended nature of the building while rooting it in place. A climbing tree on the west of the property and the flat lawn where the boys play cricket (and a host of other activities) are visible from the balcony, aiding a sense of transparency that invites the outdoors in.

From cackling with kookaburras to climbing trees, Black Mountain House is a holiday home with the wow factor. “The dreams and hopes we had for our family in this home have certainly come true,” Narelle concludes. “Our vision for a more nature-immersed experience for our children is alive and is very much a part of the joy we feel when we are here.” 🏡



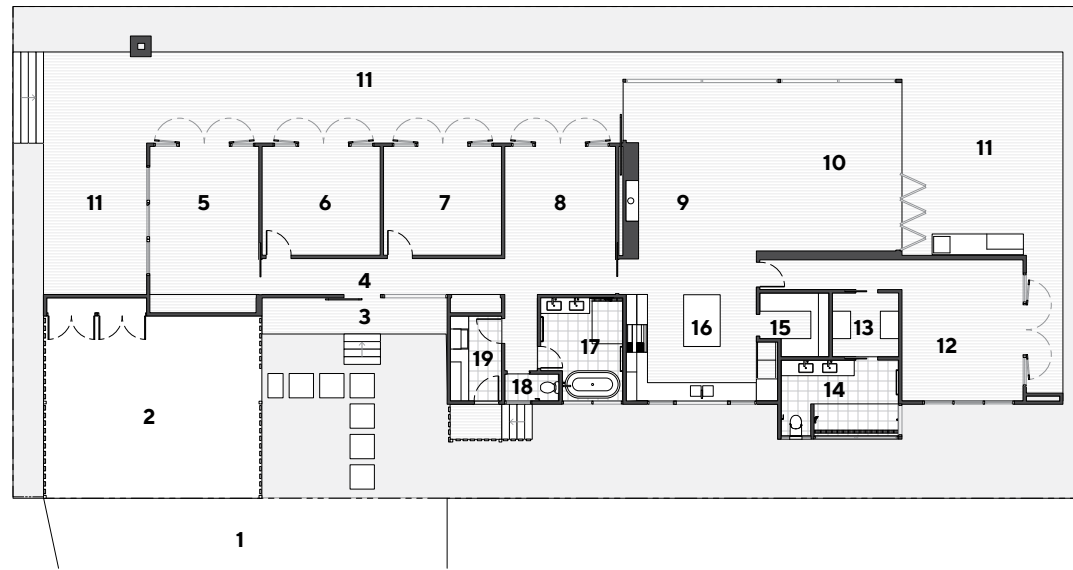
THE STRUCTURE’S
CONTEMPORARY FORM IS
SOFTENED WITH A PALETTE OF
TIMBER AND STONE TO OFFER
AN ATMOSPHERE OF WARMTH



The pool deck is perfect for afternoon naps in the setting sun



PROJECT
BLACK MOUNTAIN HOUSE



GROUND FLOOR PLAN

LEGEND

- 1 Driveway
- 2 Carport
- 3 Entry
- 4 Hall
- 5 Bed 2
- 6 Bed 3
- 7 Bed 4
- 8 Rumpus
- 9 Living
- 10 Dining
- 11 Balcony
- 12 Master bedroom
- 13 WIR
- 14 Ensuite
- 15 Pantry
- 16 Kitchen
- 17 Bathroom
- 18 Powder room
- 19 Laundry



EXTENSIVE LANDSCAPING
AND STONE RETAINING
WALLS REINFORCE THE
SUSPENDED NATURE OF
THE BUILDING WHILE
ROOTING IT IN PLACE

PROJECT TEAM

ARCHITECT/INTERIOR DESIGNER Morriarchi Architecture
(Chris Morrison), morriarchi.com.au

BUILDER Edward Building Projects, 0417 787 278

BUILDING CERTIFIER Urban Certifiers, urbancertifiers.com.au

STRUCTURAL ENGINEER Barlow Shelley Consulting Engineers, barlowshelley.com.au

SERVICES

Landscaping Replenished Earth Landscapes,
replenishedearth.com.au

Pool Pools by Design, poolsbydesign.net.au

Pool deck & fencing Moonah Landscapes,
moonahlandscapes.com.au

OPPOSITE The bathroom's high-quality finishes are offset beautifully by yet more stunning views