



# Collection

GLENVILL HOMES



# Because exceptional shouldn't be the exception

Collection <sup>p6</sup>

Foundations <sup>p13</sup>

Flexibility <sup>p15</sup>

Home designs <sup>p18</sup>

The design and build process <sup>p81</sup>

Glenvill Homes <sup>p84</sup>

Some say compromise is a fact of life. At Glenvill, we think it's more of an excuse. Our Collection portfolio of homes offers artistic design, uncompromising quality and affordable pricing — no shortcuts or concessions. What makes it all possible is the Glenvill name and our decades of experience and unparalleled position in the industry.

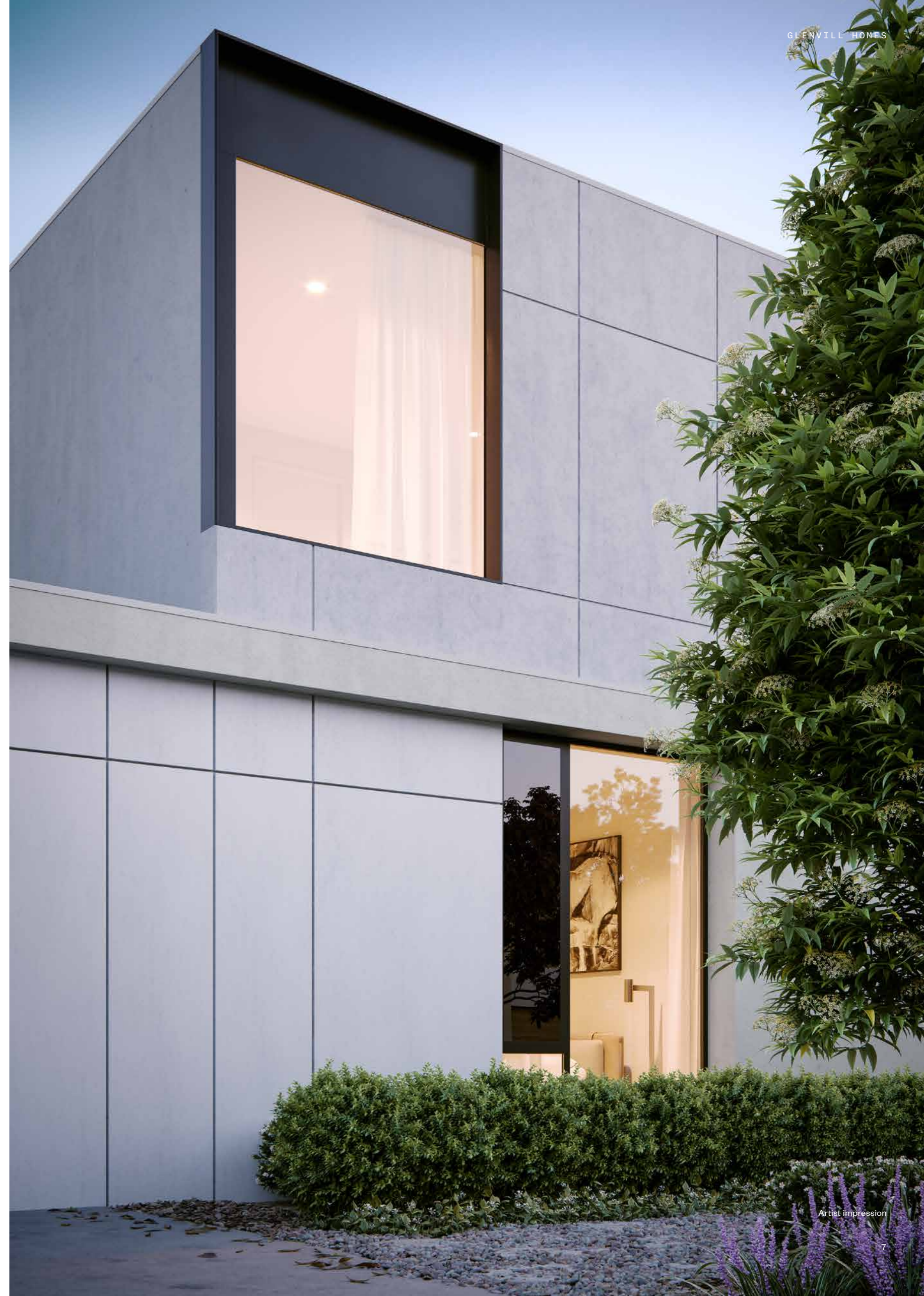
So if you're struggling to decide whether you value design, quality or affordability the most, you can have all of the above with Collection.



# Can't have it all? We beg to differ

Collection offers the rarest of combinations: high-quality, artistic designs that fit both your budget and your timeline.

What makes this possible? The answer lies in extensive planning – backed by Glenvill's six decades of excellence, and an innate understanding of how people live. Even before the build begins, a Collection home is meticulously constructed. The design has been painstakingly refined, the project plan carefully crafted, and the pricing pared back to its minimum.







# Design a home with the foundations already laid

Collection homes are created to fit urban blocks without the need for planning or report and consent processes, and are ready to move into in less than 12 months. But while the process is straightforward, the design standards are as rigorous as ever.

All so you can be confident that your build will progress smoothly, with more certainty, more signature Glenvill quality, and less paperwork or delays. Giving you more of what really counts – your very own Glenvill designed home.





# Designed for living Built for you

---

When crafting a thoughtfully designed Collection home, we focus on one concern above all others – is it liveable? Informed by Glenvill’s six decades of excellence, each carefully considered build displays an innate understanding of how people live.

We understand that, in reality, one-size-fits-all fits only a few. Which is why Collection offers flexibility, with a range of design options, colour schemes and interior upgrade options allowing you to refine and modify your home to suit your lifestyle. And our dedicated team has worked tirelessly to ensure that every detail has been not only thought of, but perfected. All so we can create a home that is tailored perfectly to your wants, tastes and needs.





# Home designs

Spatial Landscape <sup>p21</sup>

Lighthouse <sup>p33</sup>

Minimalist Abode <sup>p45</sup>

Contemporary Residence <sup>p57</sup>

Urban Habitat <sup>p67</sup>



# Spatial Landscape

The Spatial Landscape (SL) is the epitome of grand living - its sheer presence enough to behold and impress.

Whether you are entertaining or seeking relaxation, the carefully arranged and generously proportioned living spaces of this home facilitate it all. The open plan kitchen, living and dining beautifully celebrates indoor-to-outdoor living with a seamless connection to the magnificent alfresco.

Greeting you from the front entrance is the sweeping staircase that takes you upstairs to find an additional living space. This spacious multipurpose room and second study is a dream come true for those with a growing family or that are simply seeking more functional space. The master bedroom welcomes you with a grand double door entry and features a luxuriously spacious ensuite with freestanding bath, double shower and a WIR more akin to a dressing room. Meanwhile, keeping life's accumulation organised and out of sight is never a problem in this home with each of the five bedrooms having their own walk-in-robos plus a walk-in linen and coats cupboard.



Artist impression

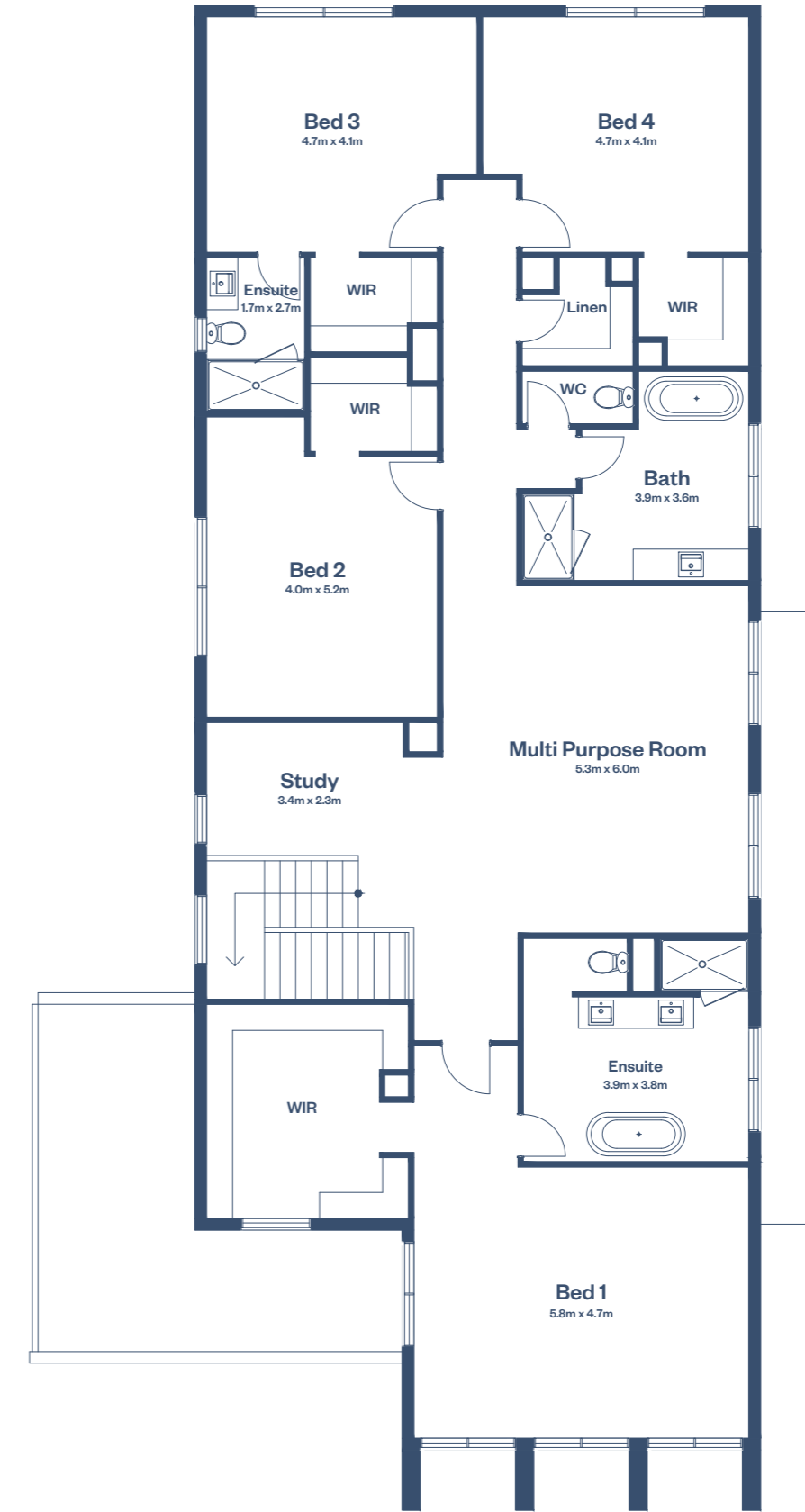
# Floorplan

## Spatial Landscape

- 5 — Bedrooms
- 4 — Bathrooms
- 3 — Living areas
- 2 — Studies
- 1 — Alfresco
- 53.8sq — Home size



Ground floor base



First floor base

Design Options  
Spatial Landscape

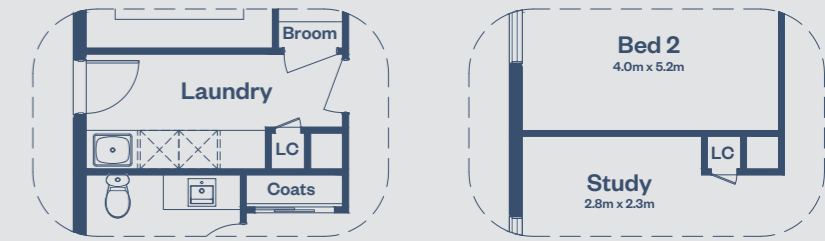


Ground floor base

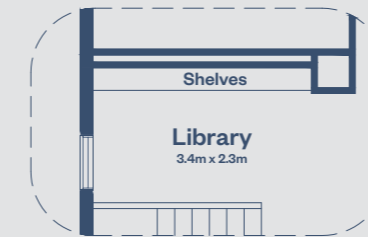
**A** Living & Alfresco Rear Reverse



**B** Laundry Chute Option



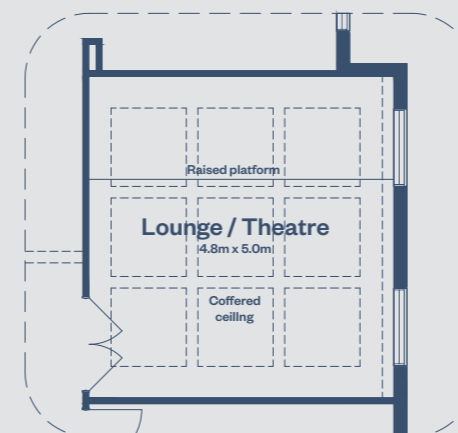
**C** Library Option



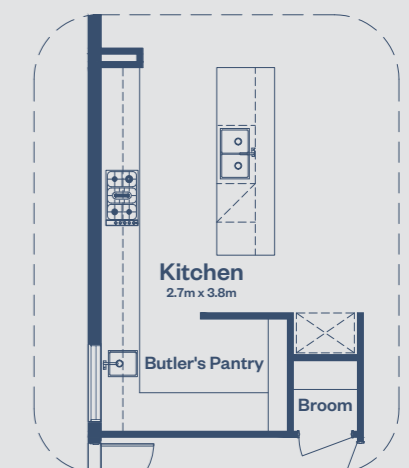
**D** Living Fireplace Option



**E** Theatre Fitout Option



**F** Butler's Pantry Option



Design Options  
Spatial Landscape



First floor base

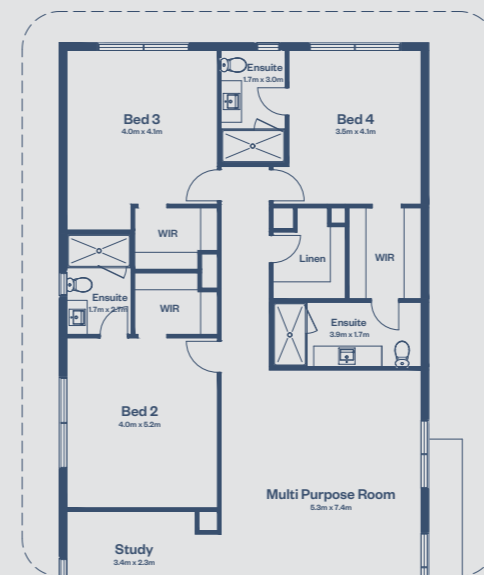
**G** Living Double Height Void Option



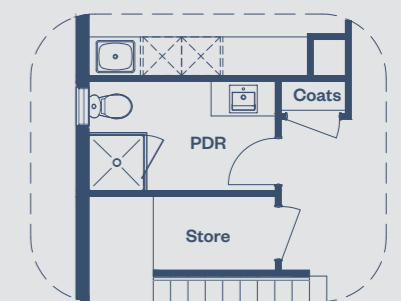
**H** Dining Double Height Void Option



**I** Ensuities To All Bedrooms



**J** Shower To PDR



# Facade Options

## *Spatial Landscape*





# Facade Options

## *Spatial Landscape*





Artist impression

# Lighthouse

The Lighthouse (LH) is a contemporary home that seeks to blur the boundaries between inside and out (you might even call it the Courtyard House). The logic in its planning and functionality is to create a feeling of volume throughout the home while allowing light to flood its living spaces.

On top of this, the LH prioritises possibility through its design options. While the base plan has three bedrooms and three living areas, there's flexibility for you to expand by adding a media room, a study or an entry void. Additions like these mean the LH can grow. You can create that four-bedroom house - all while letting the light flow freely and maintaining a fresh, courtyard vibe.



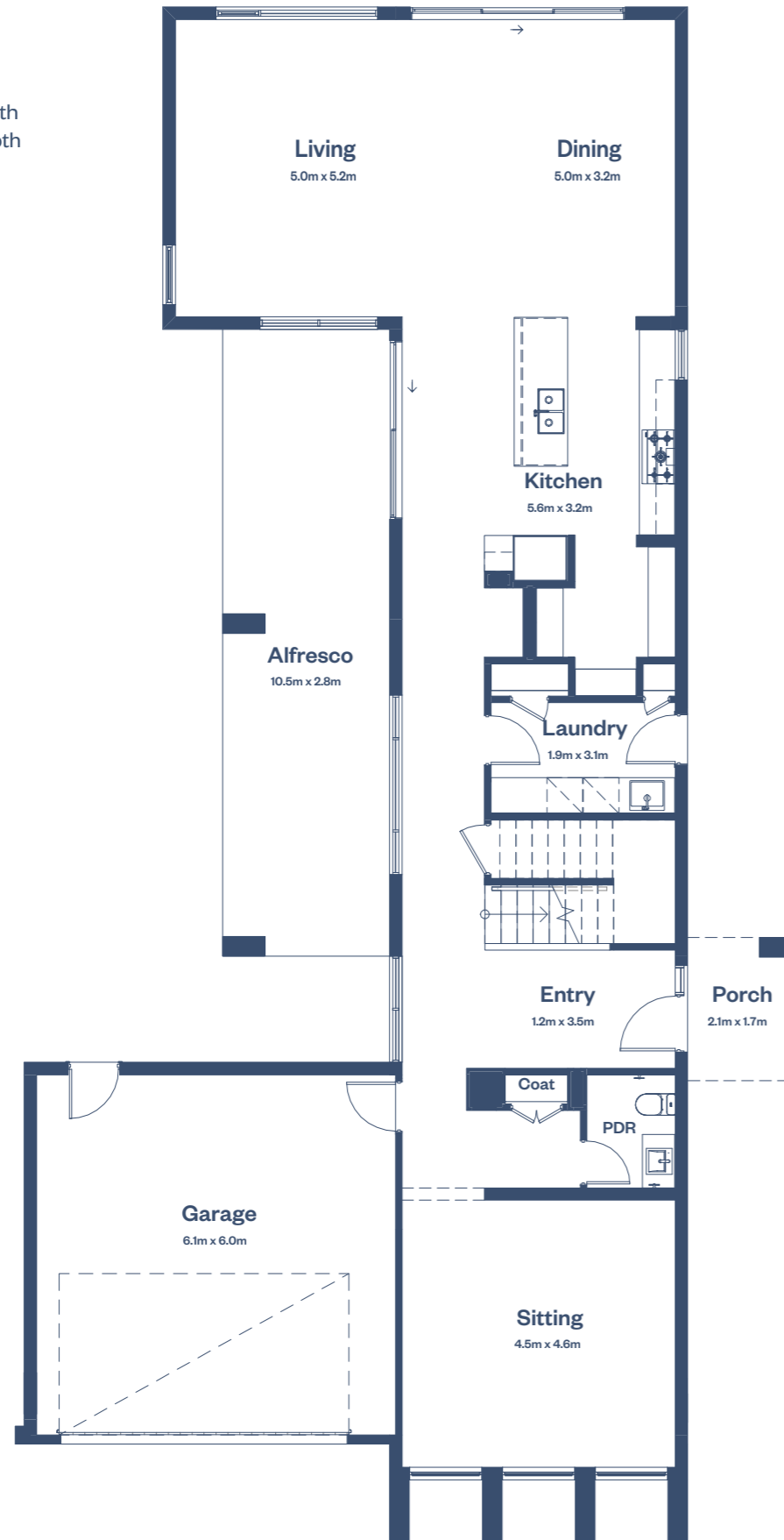
Artist impression

# Floorplan

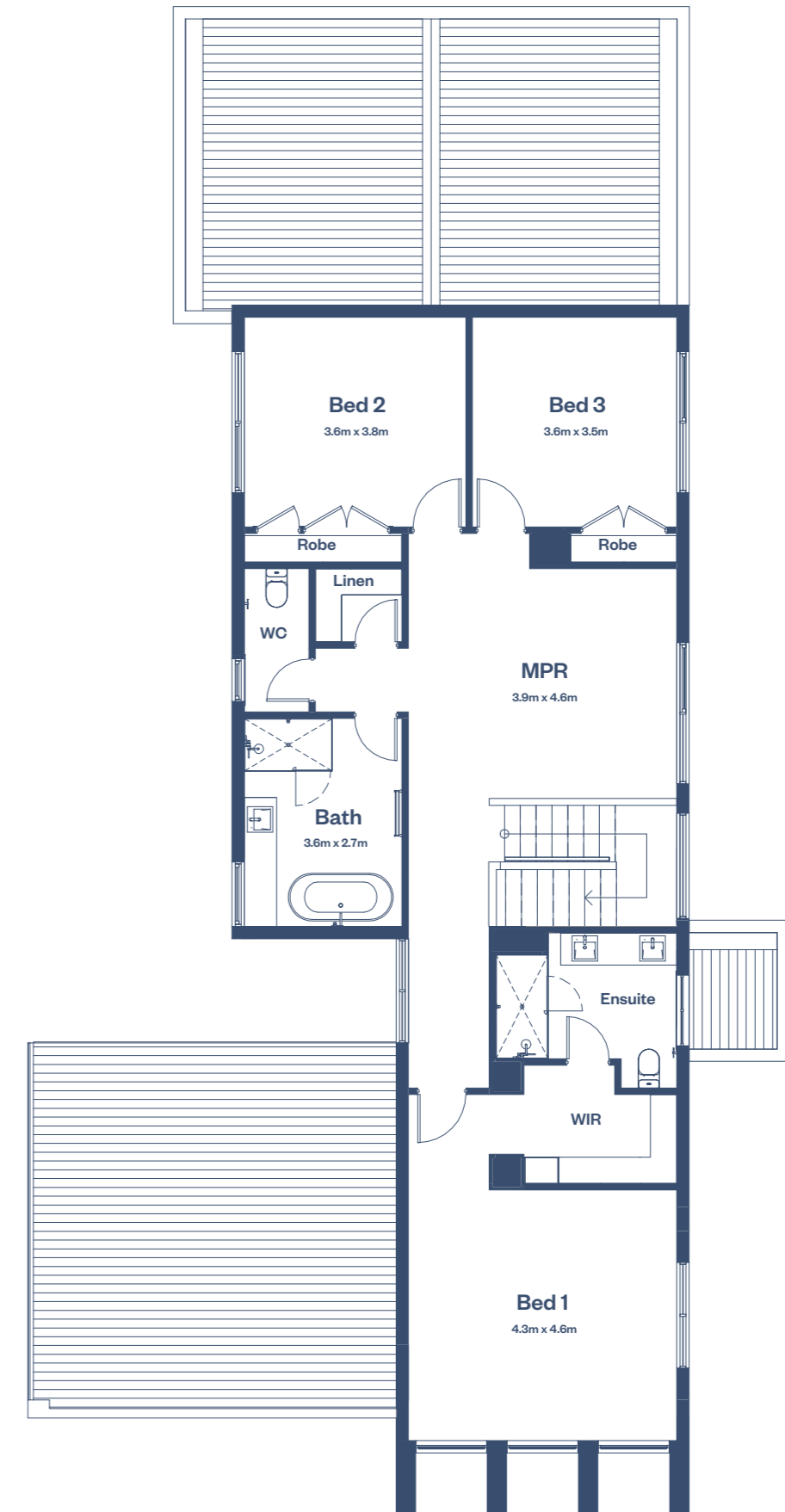
## Lighthouse

- 3 — Bedrooms
- 2.5 — Bathrooms
- 3 — Living areas
- Alfresco
- 38sq — Home size

- 14m — Minimum Lot Width
- 34m — Minimum Lot Depth



Ground floor base



First floor base

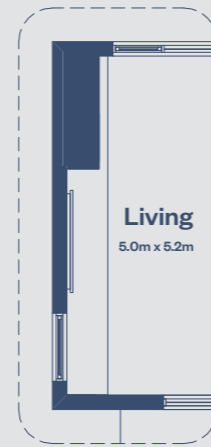
# Design Options

## Lighthouse



Ground floor base

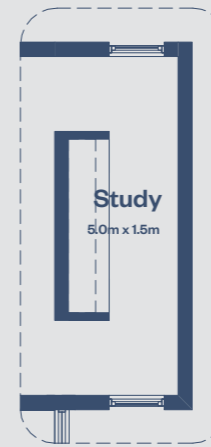
**A** Living fireplace



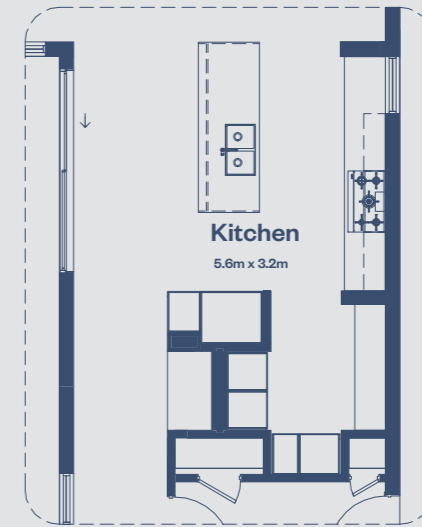
**B** Living fireplace



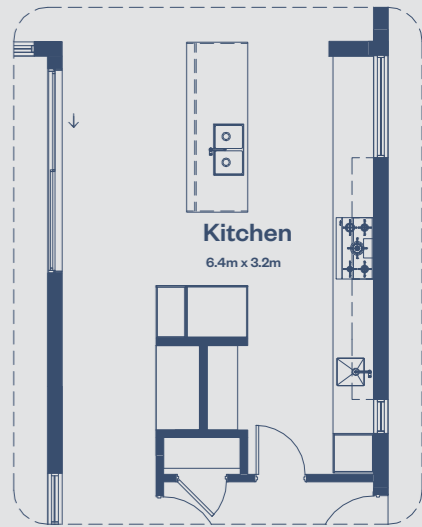
**C** Study



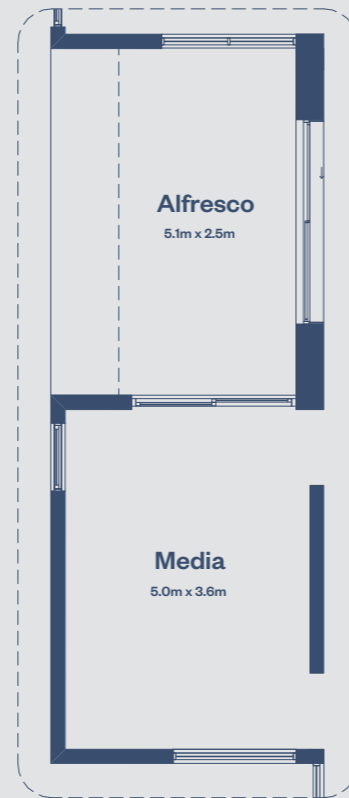
**D** Kitchen Option 1



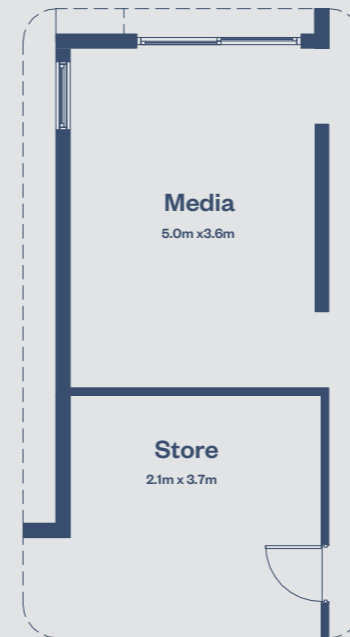
**E** Kitchen Option 2



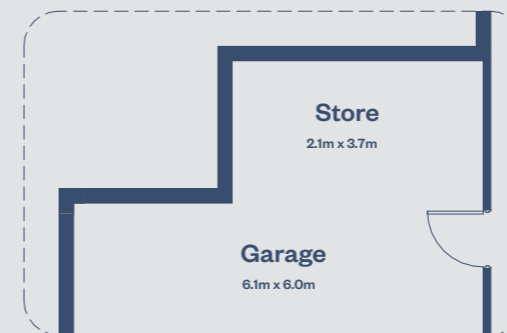
**F** Media



**G** Media and Garage Store



**H** Garage and Store



**I** Guest room with powder



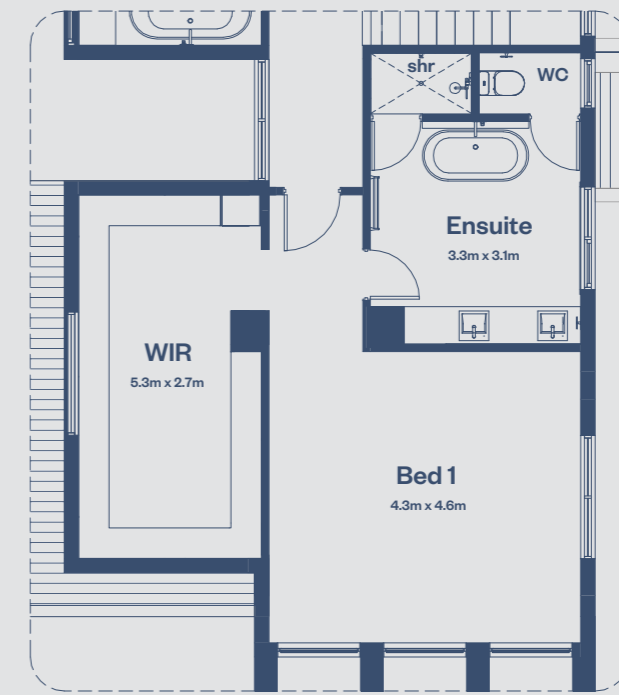
# Design Options

## Lighthouse

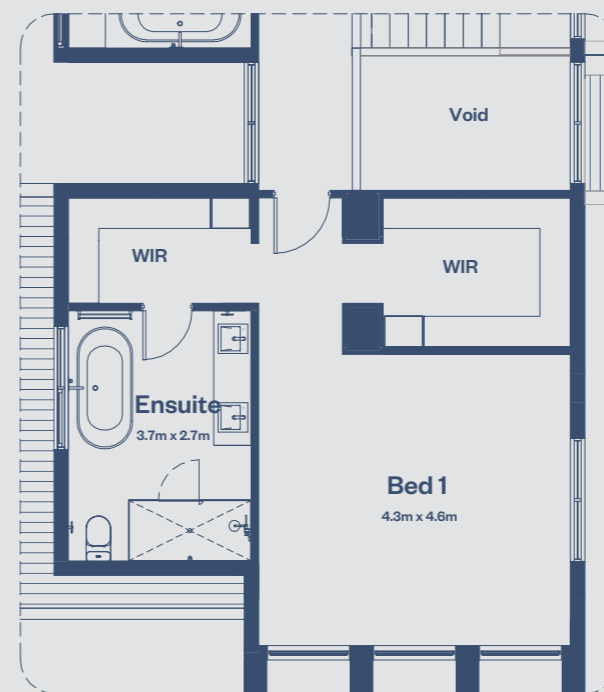


First floor base

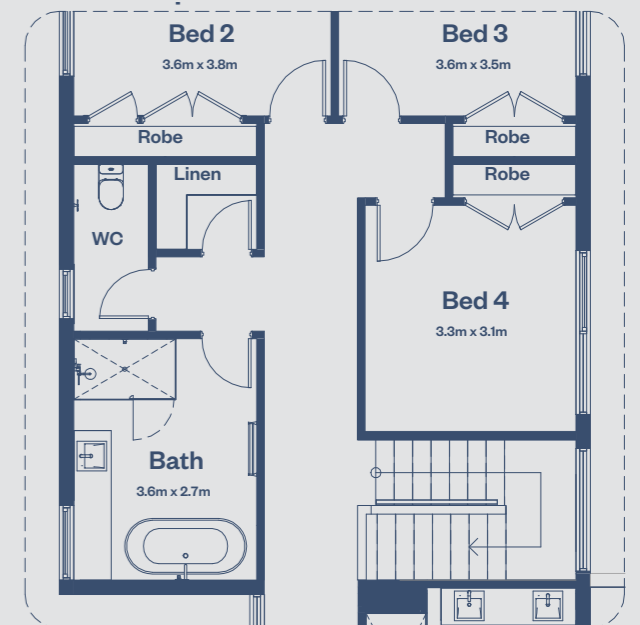
**A** Ensuite with WIR Over Garage Option



**B** Void with Ensuite Over Garage



**C** Bedroom Option



# Facade Options

## *Lighthouse*



# Facade Options

## *Lighthouse*





Artist impression

# Minimalist Abode

The Minimalist Abode (AB) is a compact, efficient and carefully scaled residence of over 42 squares. The base plan has four bedrooms, three living spaces and a lower floor study, making it the perfect home for family life. Design options include the choice to add ensuites to all bedrooms, a larger laundry or even a drop zone. Plus, this plan allows you to add length to different areas of the layout, so there's plenty of room to accommodate – whatever your family needs. Combine these design options with one of the Glenvill Collection's diverse but distinct facades, and the AB will stand proud for generations to come.



Artist impression

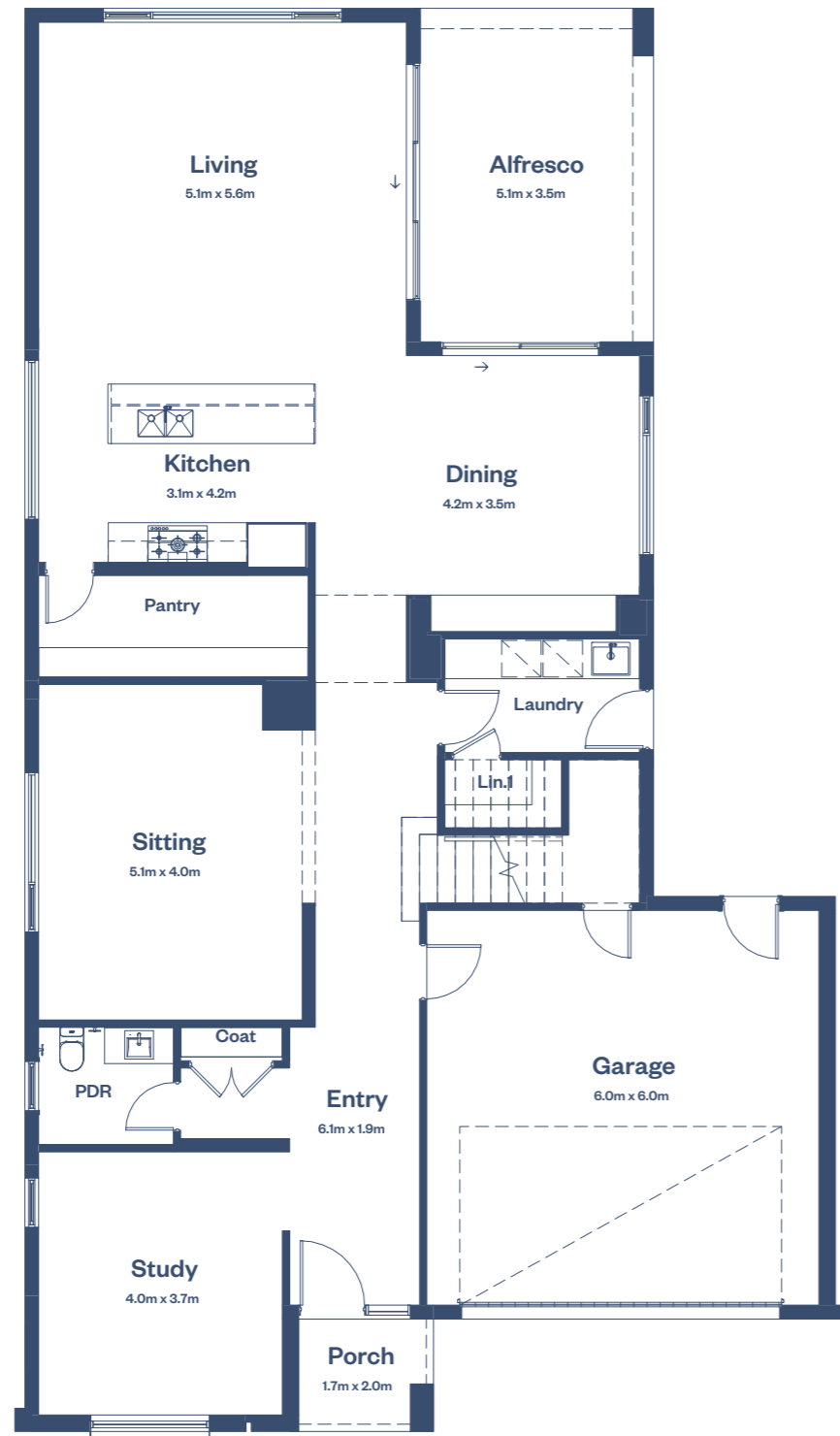


# Floorplan

## Minimalist Abode

- 4 — Bedrooms
- 2.5 — Bathrooms
- 3 — Living areas
- Study
- Alfresco
- 43.5sq — Home size

- 15m — Minimum Lot Width
- 32m — Minimum Lot Depth



Ground floor base



First floor base

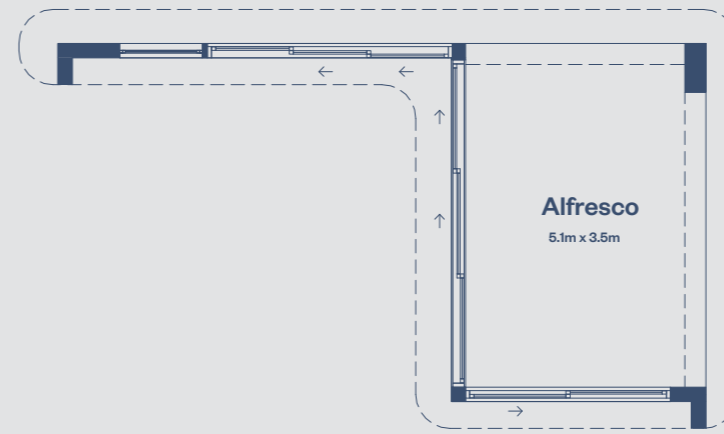
# Design Options

## Minimalist Abode

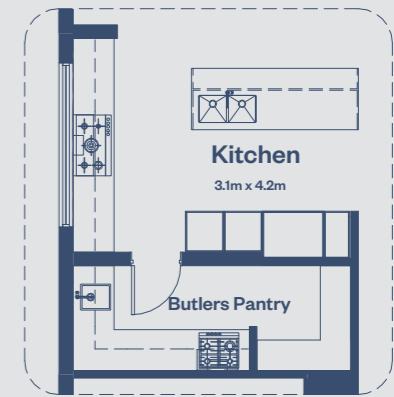


Ground floor base

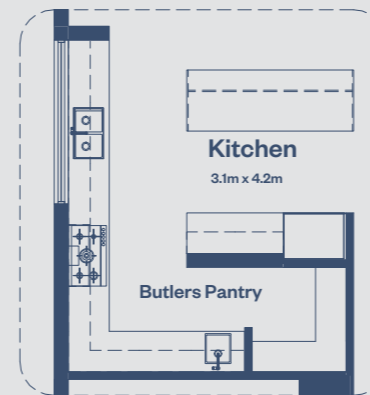
**A** Alternative Rear Doors Layout Option



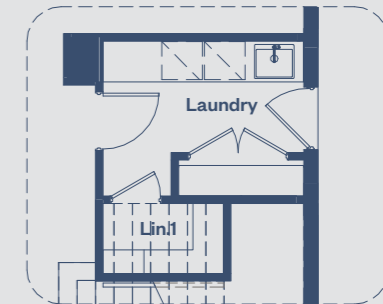
**B** Kitchen Option



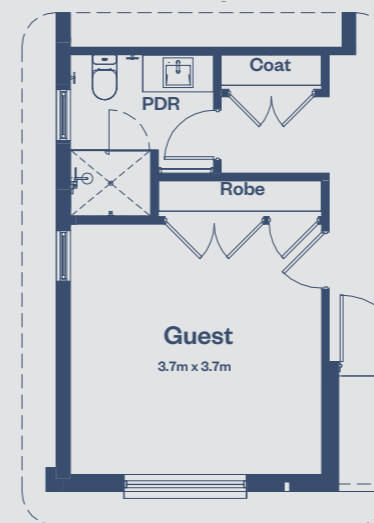
**C** Kitchen Option



**D** Laundry Linen Option



**E** Guest Room Option



# Design Options

## Minimalist Abode

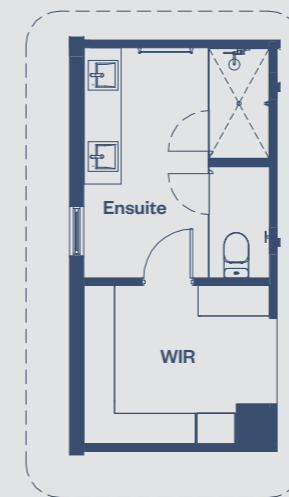


First floor base

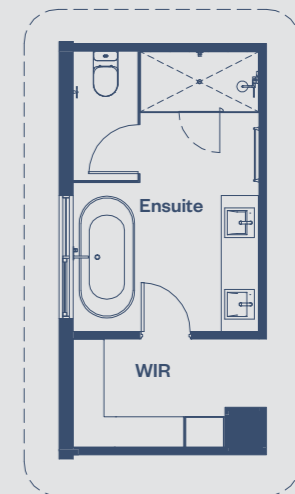
### A Ensuites to all Bed Option



### B Ensuite Option B



### C Ensuite Option C



# Facade Options

## *Minimalist Abode*



# Facade Options

## *Minimalist Abode*



# Contemporary Residence

The Contemporary Residence (CR) is a home of grand proportions. At 44 squares, the base plan includes four bedrooms, three living rooms and a study – all generously sized, multifunctional spaces that sprawl across two storeys. The CR is purpose-built for living. But, as with other Collection plans, you've got several design options to choose from. Not only can you expand the home's layout, but you can flip the rear living space and alfresco to suit any site orientation. Finally, you can complete the CR build by choosing one of the Glenvill Collection's beautiful classic or contemporary facades – a grand finish for a grand home.



Artist impression



Artist impression

# Floorplan

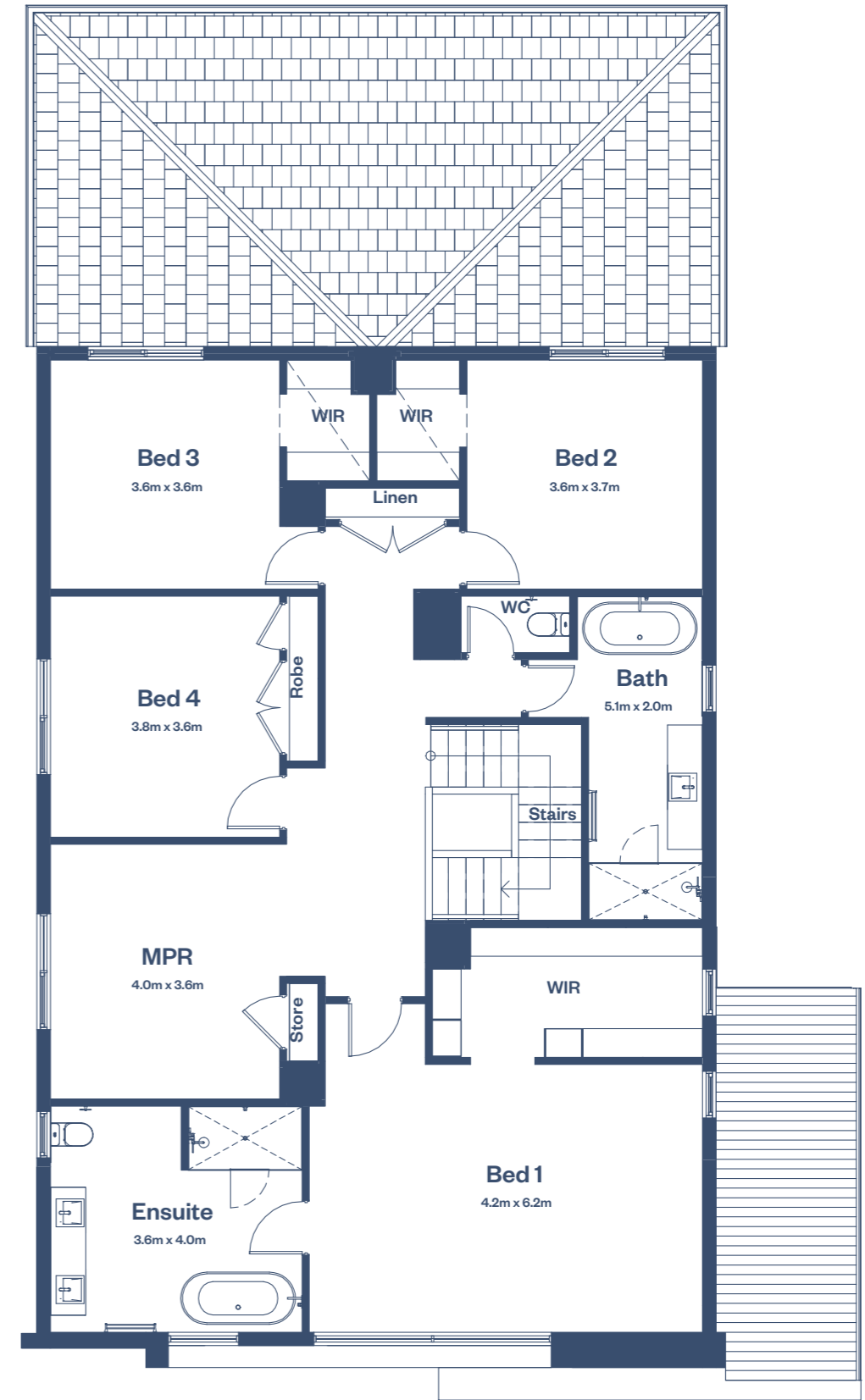
## Contemporary Residence

- 4 — Bedrooms
- 2.5 — Bathrooms
- 3 — Living areas
- Study
- Alfresco
- 44sq — Home size

- 15m — Minimum Lot Width
- 32m — Minimum Lot Depth



Ground floor base



First floor base

# Design Options

## Contemporary Residence

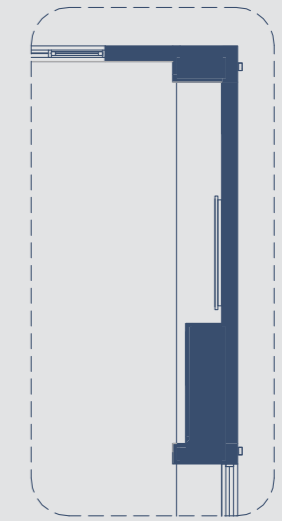


Ground floor base

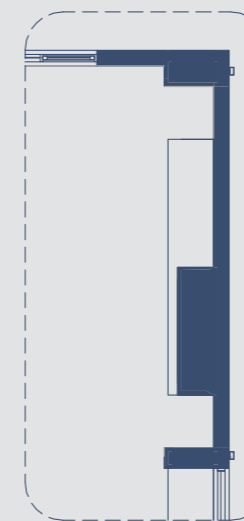
**A** Living and Alfresco Rear Reverse



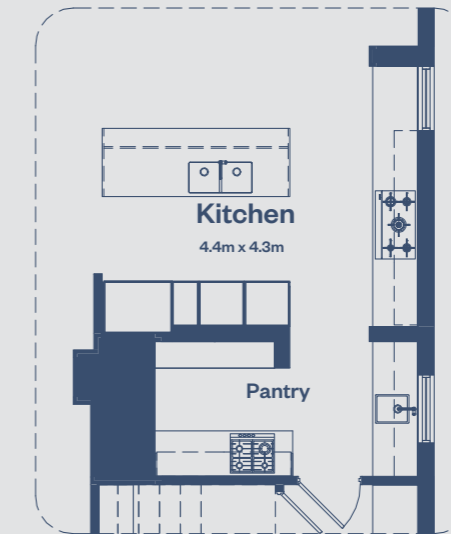
**B** Living Fireplace Option



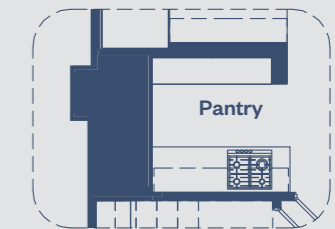
**C** Living Fireplace Option



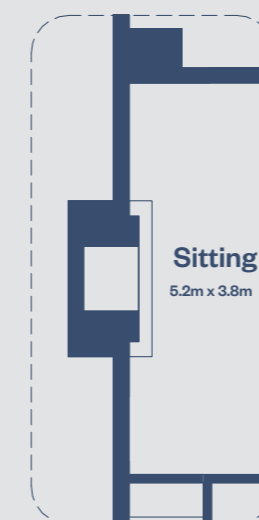
**D** Kitchen Option



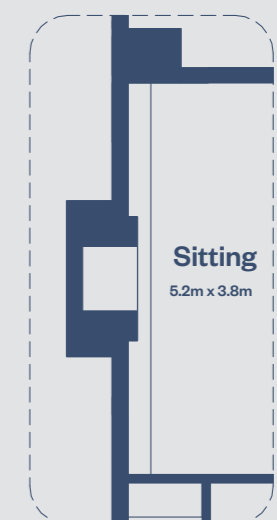
**E** Pantry Fitout Option



**F** Sitting Fireplace Option



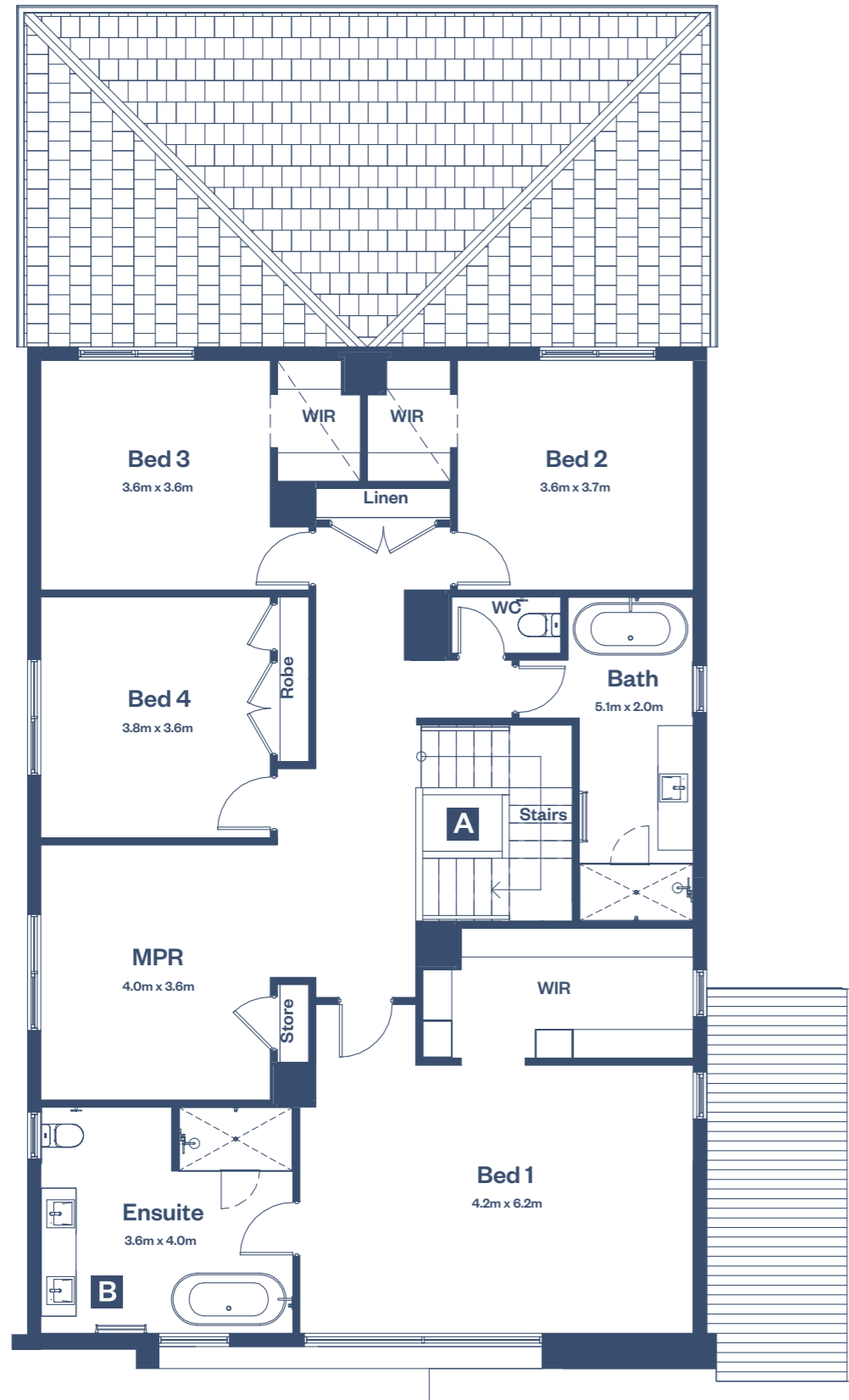
**G** Sitting Fireplace Option





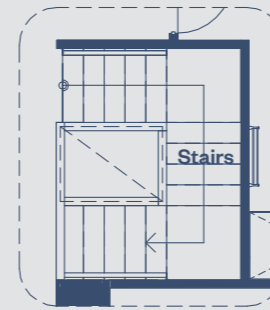
# Design Options

## Contemporary Residence

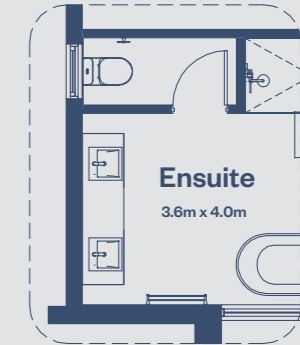


First floor base

**A** Stairs Skylight Option



**B** Ensuite Enclosed WC Option



# Facade Options

## *Contemporary Residence*





Artist impression

# Urban Habitat

The Urban Habitat (UH) is a sleekly crafted floor plan designed to fit a 12.5-metre-wide site – without compromising on the features you’ve come to expect from our other designs. The UH’s base plan has three living spaces and four bedrooms, but as always, you have options for design. Depending on your needs, the UH allows for changes like giving each bedroom an ensuite, increasing the size of the main bedroom’s ensuite and walk-in robe, or creating an entry with a magnificent, two-storey void. On top of room-specific design options, this plan allows you to flip the rear living area, alfresco, stairs, and garage as required – meaning the UH isn’t limited by site orientation. It’s a brilliantly adaptable habitat for contemporary urban living.



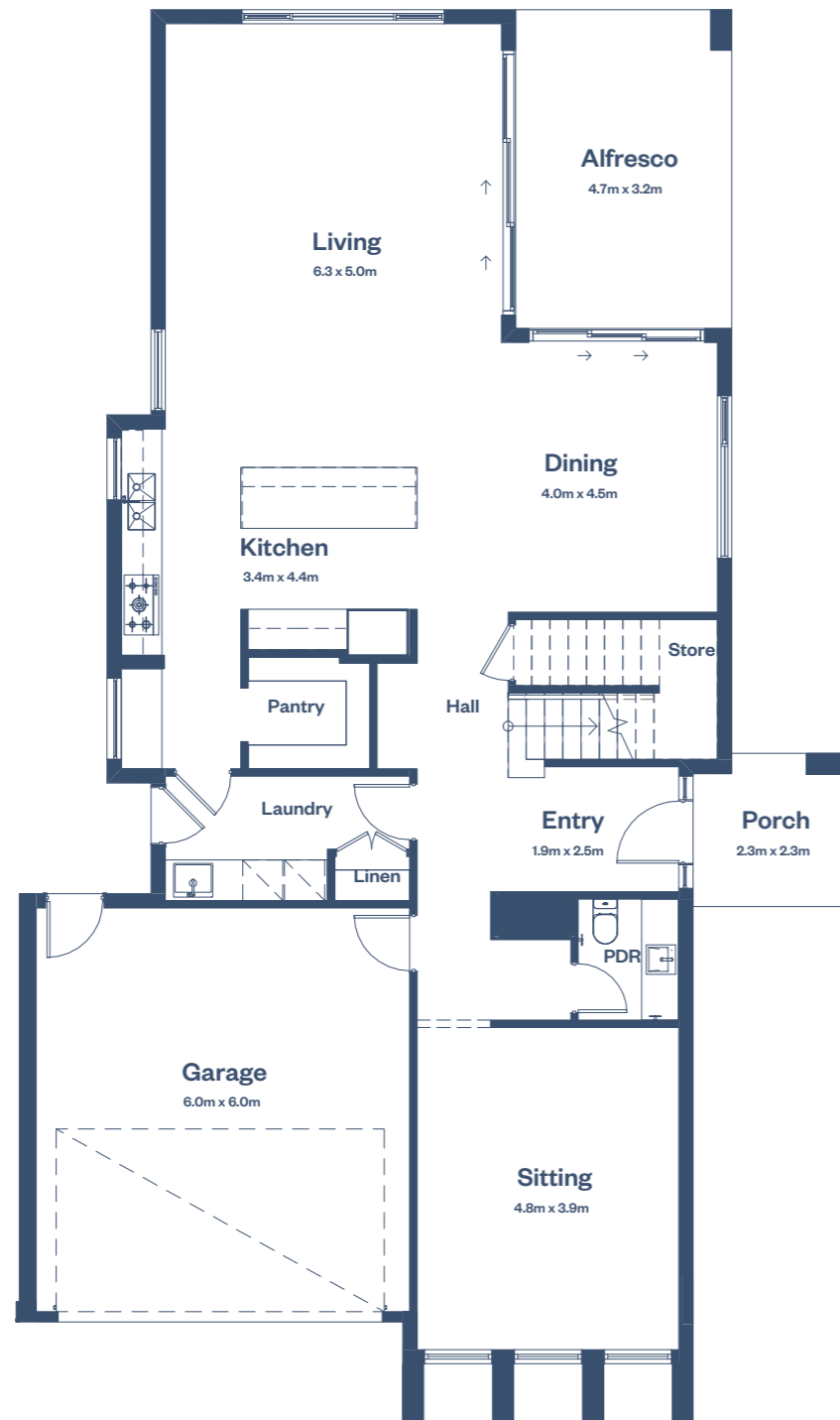
Artist impression

# Floorplan

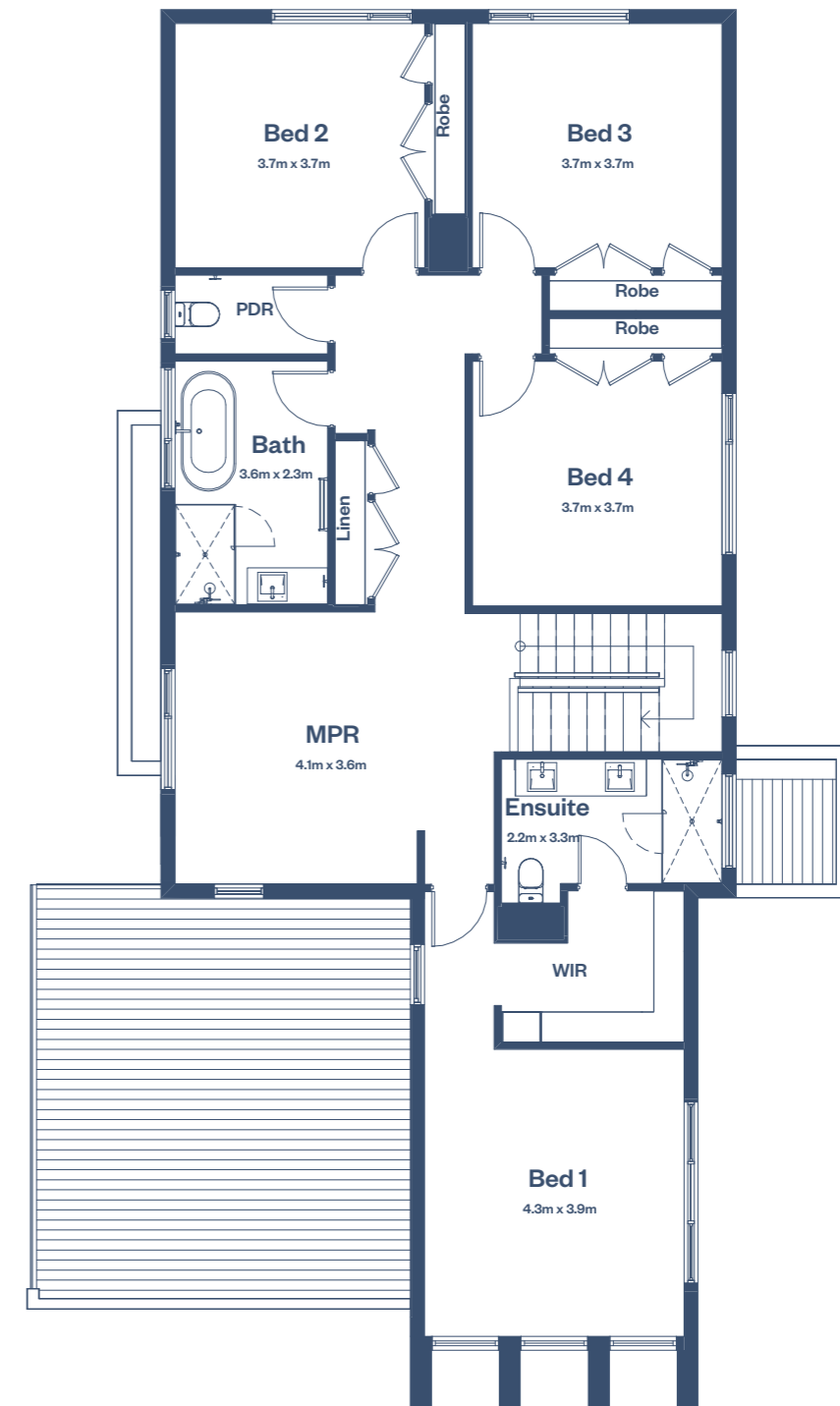
## Urban Habitat

- 4 — Bedrooms
- 2.5 — Bathrooms
- 3 — Living areas
- Alfresco
- 35sq — Home size

- 12.5m — Minimum Lot Width
- 32m — Minimum Lot Depth



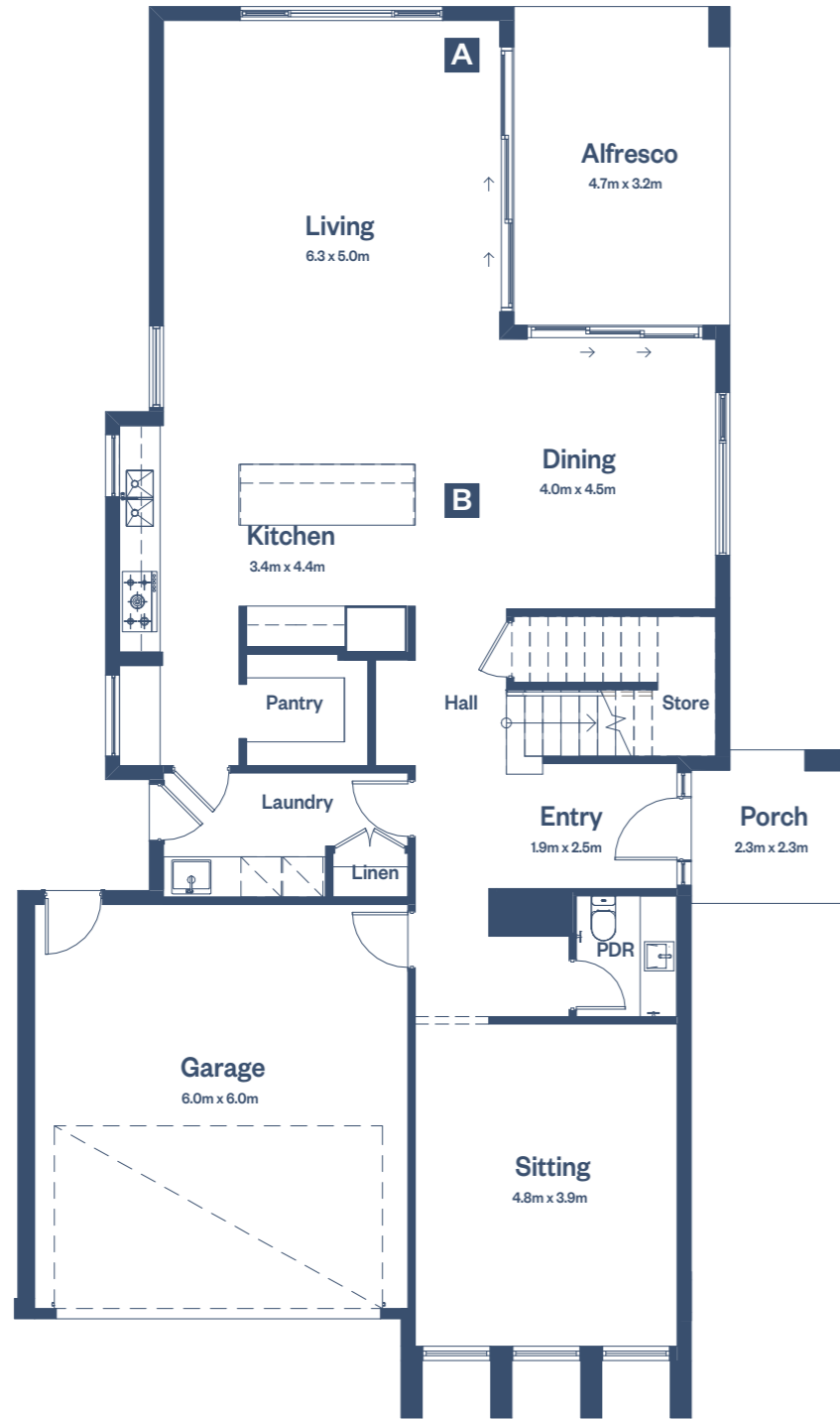
Ground floor base



First floor base

# Design Options

## Urban Habitat



Ground floor base

**A** Flipped Rear Option

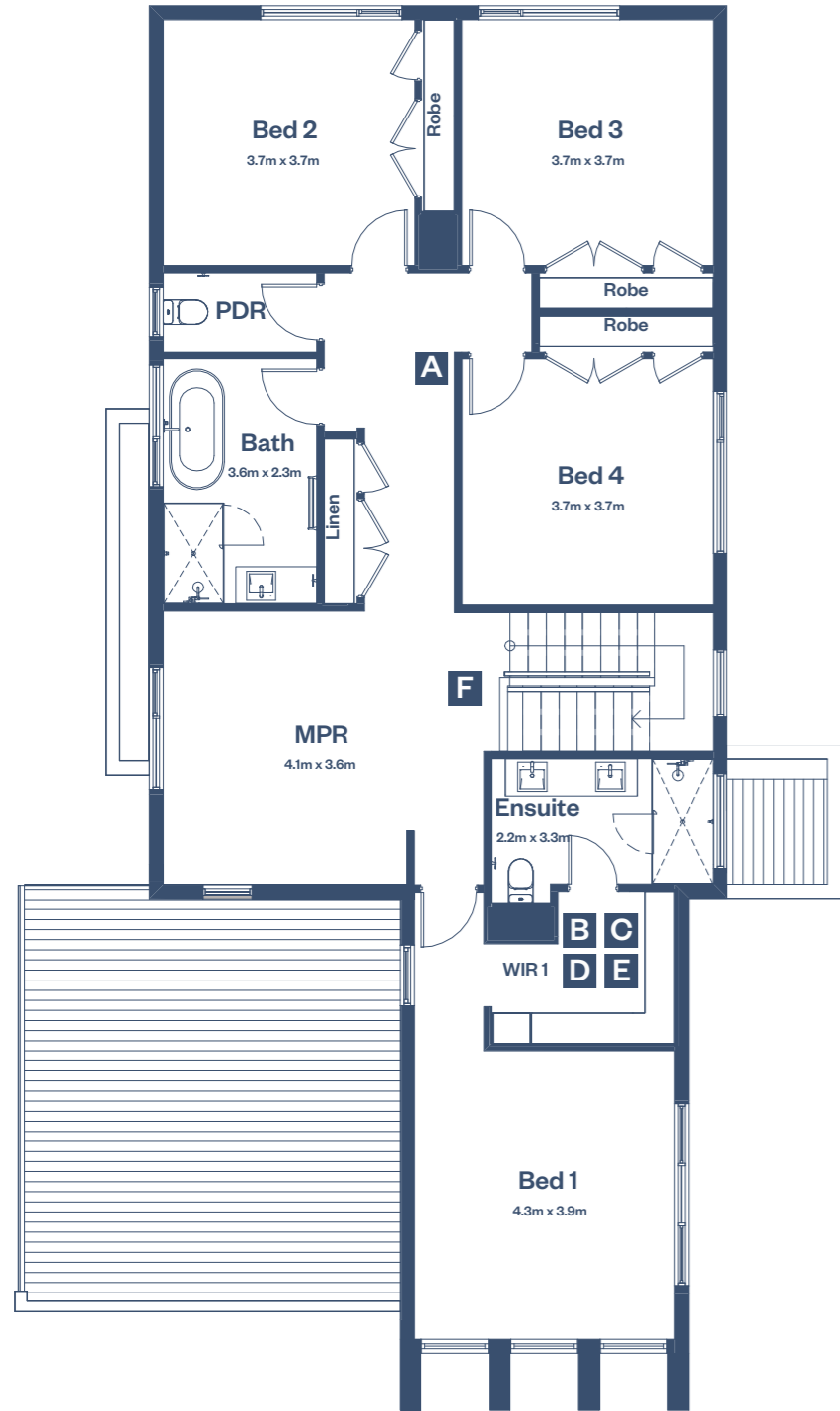


**B** Flipped Stair - Kitchen - Alfresco



# Design Options

## Urban Habitat

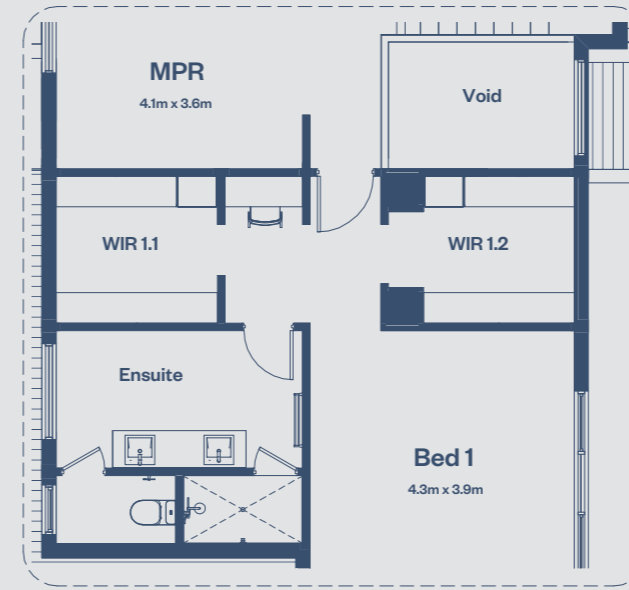


First floor base

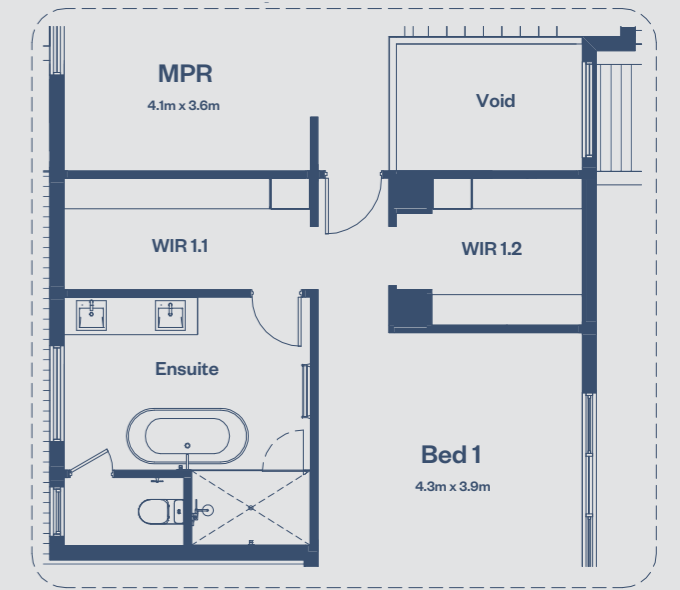
**A** Ensuites to all Bed Option



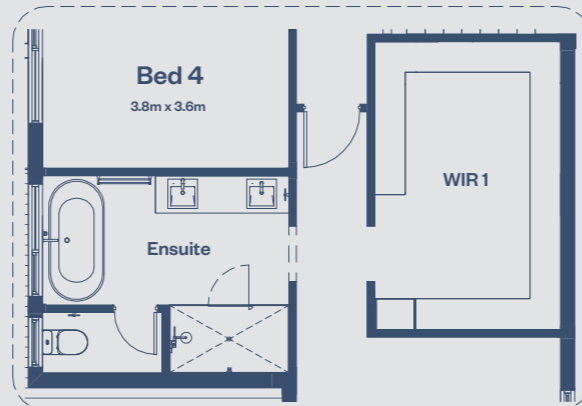
**B** Ensuite Void Option



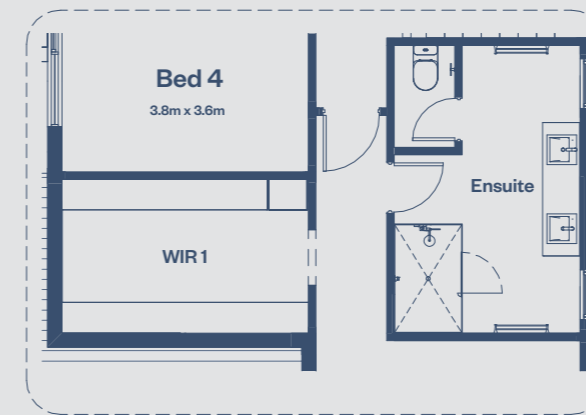
**C** Ensuite Void Option



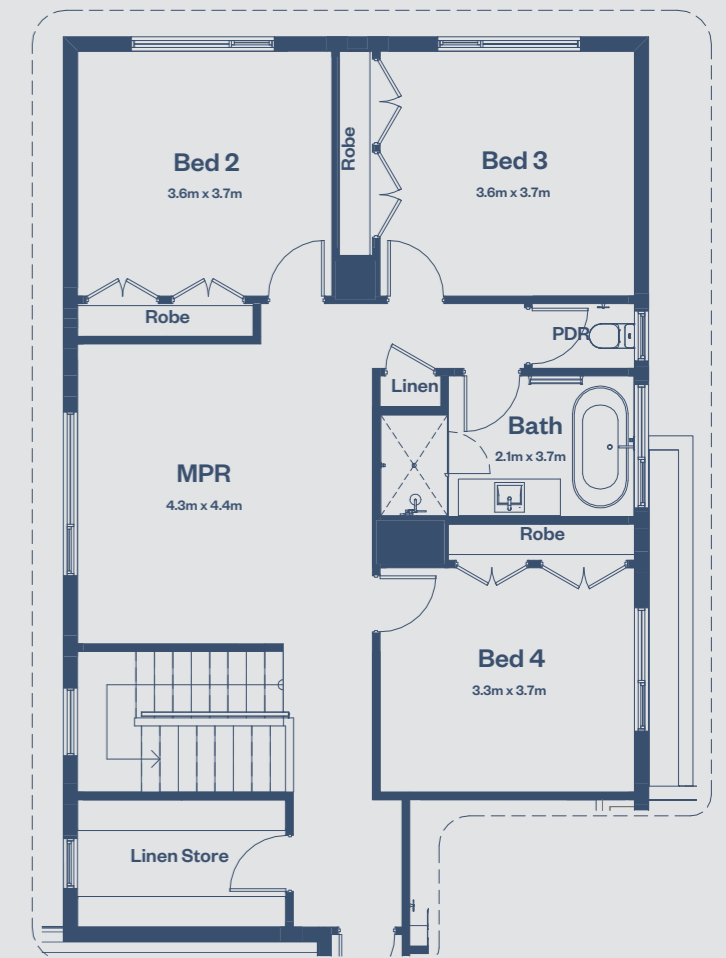
**D** Ensuite 1 / WIR Option



**E** Ensuite 1 / WIR Option



**F** Flipped Stair Option



# Facade Options

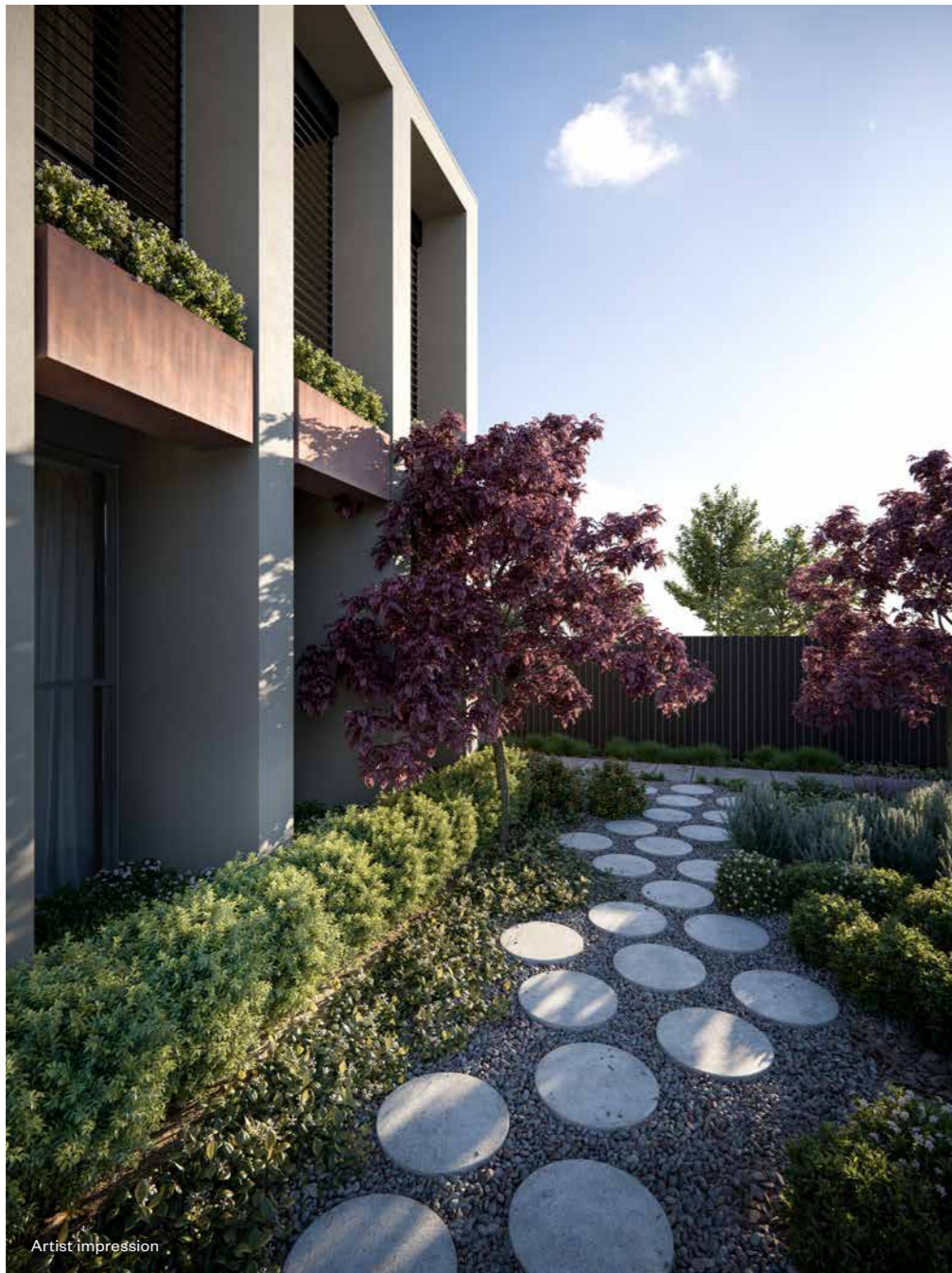
## *Urban Habitat*











# The Collection design and build process

## Hello

**Step.1** — The process starts with a conversation with your Design Manager. You'll sit down with your Design Manager to discuss your budget and your block, define who you are, what inspires you, and most importantly, what you envision for your home. Great design outcomes result from our design team truly understanding you and your expectations.

## Brief and Design

**Step.2** — Here we gather any other information that may affect your brief or our design. We visit your block and undertake a full site and planning analysis including surveying and soil testing. We want to know all the facts before we start so we can ensure there are no surprises. From these findings, we'll provide you with an indicative cost of the ideas laid out in your brief. Working from the detailed brief we've defined together, we'll select a façade, plan and design options to suit your taste and needs.

## Preconstruction

**Step.3** — We will take care of the fine print, developing the documentation pack whilst providing you with a fixed price build contract. You will choose your interior colour scheme, finalise your external scheme, options and upgrades. All so you can see exactly what your house will look like, and know exactly what it will cost.

## Construction

**Step.4** — Now that the design is finalised and final pricing agreed upon – it's time to break out the tools and make your dream home a reality. We obtain the building permit, order all materials and appoint your site manager. During the construction process, we follow strict and realistic timelines and adopt stringent benchmarks for workmanship. Whether you're located nearby or not, you'll be kept up to date at every stage until completion.



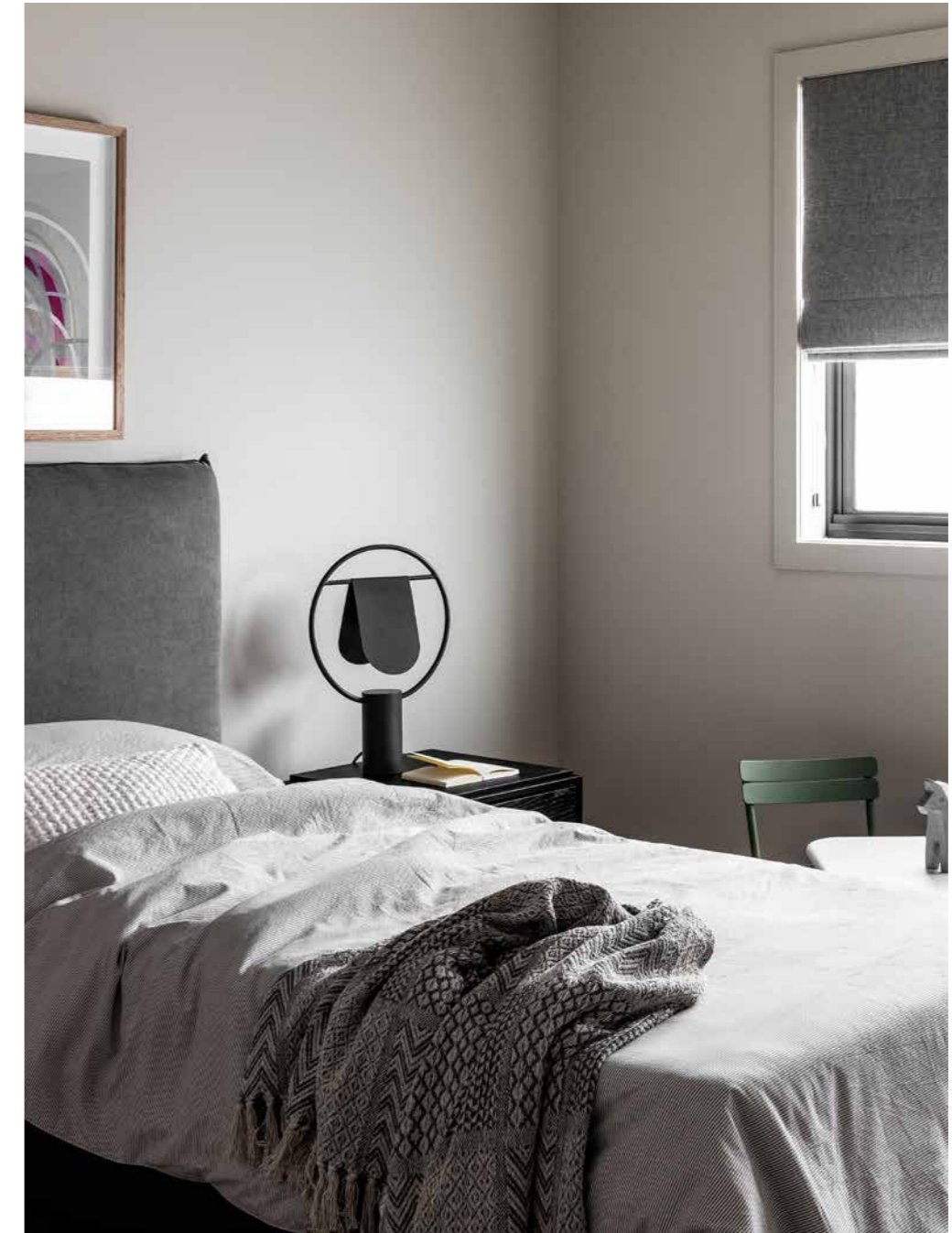
Artist impression

# A pursuit for excellence

The Glenvill Group, like any construction project, has grown from the ground up. Beginning six decades ago as Glenvill Homes, we remain Australian owned and operated and have become synonymous with creating quality custom homes – premium products married with a premium, end-to-end, customer-focused experience. We've got a long history, but with a new range of pre-designed, architecturally finessed homes, we've still got our eyes set on innovation.

With Glenvill Collection, we strive to make our customer experience as smooth and time-efficient as possible. So, from choosing one of our distinct floor plans and facades right through to construction, a dedicated building administrator will support you on your journey to keep things seamless. We carry this ethos behind closed doors, too. From design to build, our processes happen entirely under one roof to prioritise collaboration and teamwork. We focus on synergy and practicality, so everything at Glenvill is worked on and managed in-house by a team of the best in the industry – people who are passionate about their work and creating excellent end-to-end service. We do this to ensure you get consistent, specialist craftsmanship and assistance throughout the process – and a premium quality home that will set the benchmark for generations to come.









Disclaimer: The information contained in this promotional material is for illustration purposes only and is subject to change. Statements, figures, calculations, plans, images and representations are indicative only. Images may include sketches, artist impressions and computer generated images. Specifications, details, fittings, fixtures, façades, elevations and floorplans (including internal and external dimensions and orientation) may be changed without notice. Photographs, illustrations and artists impressions depicting landscaping, interiors and exteriors are intended as a guide only and are subject to change without notice. Prospective purchasers must make their own enquiries to satisfy themselves as to all aspects of any Glenvill project, design or product and further should seek independent legal and financial advice in relation to all of the information contained herein. The information in this document is believed to be correct but is not guaranteed. This document is not an offer or a contract. Glenvill expressly disclaims any and all liability relating to, or resulting from, the use of or reliance on, any information contained in this document by any person. Printed May 2021.





# Collection



Single storey range

————— by GLENVILL

# Because exceptional shouldn't be the exception

Some say compromise is a fact of life. At Glenvill, we think it's more of an excuse. Our Collection portfolio of homes offers artistic design, uncompromising quality and affordable pricing — no shortcuts or concessions. What makes it all possible is the Glenvill collaboration and our decades of experience and unparalleled position in the industry. So if you're struggling to decide whether you value design, quality or affordability the most, you can have all of the above with Collection.



## *Single storey home designs*

Linear Form <sup>p2</sup>

Atrium Form <sup>p6</sup>

Built Connection <sup>p12</sup>

Private Canopy <sup>p16</sup>

Versatile Context <sup>p20</sup>

Intimate Canvas <sup>p24</sup>

Organic Precinct <sup>p28</sup>

# Linear Form

The Linear Form is an idyllic 33 sq, four-bedroom oasis perfect for family living. The master bedroom, complete with a walk-in-robe and private ensuite, sits coupled with a study at the front of the house, creating a secluded, retreat-style parents' wing. Towards the rear, there are three generously sized bedrooms and a versatile, multi-purpose rumpus room – all fit for multigenerational living. The house's expansive, open-plan centre features a kitchen filled with quality appliances and plentiful storage, including a generous walk in pantry, with the option to upgrade to a chef worthy butlers. Finishing the Linear Form's focus on family and tranquillity - the dining and living spaces are entertainment-ready, flowing seamlessly into an expansive alfresco that's ideal for those warm, social nights at home.

## Floorplan

### Linear Form

- 4 — Bedrooms
- 2.5 — Bathrooms
- 2 — Living areas
- 1 — Study
- 1 — Alfresco
- 33sq — Home size
  
- 16m — Minimum Lot Width
- 32m — Minimum Lot Depth



# Facade Options



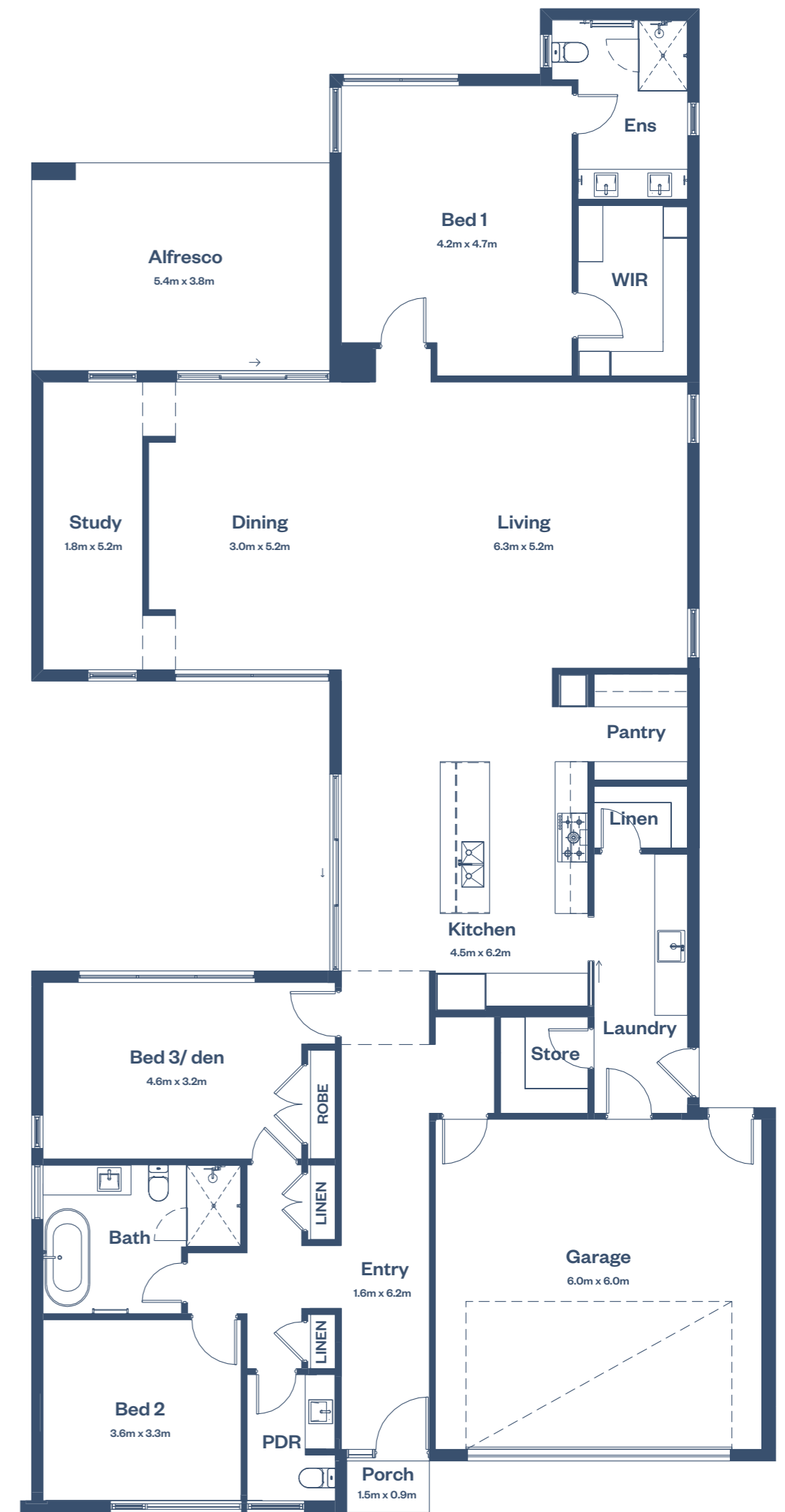
# Atrium Form

The Atrium Form (AF) is a beautifully logical, single-storey floor plan designed to prioritise space, light and outdoor living. In the AF, the kitchen is the heart of the home. The living area features a high, raked ceiling, and you've got the option of adding that to both the entry and dining area to create a truly spacious flow – right through from the front door to the courtyard. It's the ideal plan for those who love to host and entertain. Design options include both a three and four-bedroom layout option and the choice to place the main bedroom at either the front or rear of the property – so there are fewer limits for building an affordable, architecturally designed, guest-ready home.

## Option A - Main Bed to Rear

### Atrium Form

- 3 — Bedrooms
- 2.5 — Bathrooms
- 1 — Living areas
- 1 — Study
- 1 — Alfresco
- 31.5sq — Home size
  
- 16m — Minimum Lot Width
- 36m — Minimum Lot Depth



### Option B - 4 Bedroom, Main Bed to Rear

#### Atrium Form

- 4 — Bedrooms
- 2.5 — Bathrooms
- 1 — Living areas
- 1 — Study
- 1 — Alfresco
- 31.5sq — Home size



### Option C - Main Bed to Front

#### Atrium Form

- 3 — Bedrooms
- 2.5 — Bathrooms
- 1 — Living areas
- 1 — Study
- 1 — Alfresco
- 31.5sq — Home size



# Facade Options





# Built Connection

Lush, refined, exceptionally proportioned right from the moment you enter through the welcoming gallery entrance. The Built Connection is a spacious, 29sq single storey that champions connectivity and natural light. This home unites it's heart - the kitchen, dining and living areas with a generously sized alfresco for an airy space ideal for entertaining. Three of the bedrooms neighbour the central living space alongside a secluded rumpus room which provides a space for everyone in the home to relax and unwind. Finally, the grand master bedroom is exceptionally proportioned and boasts `his and hers' walk in robe which leads to a refined, cleverly designed ensuite.

## Floorplan

### *Built Connection*

- 4 — Bedrooms
- 2 — Bathrooms
- 2 — Living areas
- Study
- 1 — Alfresco
- 29sq — Home size
  
- 14m — Minimum Lot Width
- 32m — Minimum Lot Depth



# Facade Options



# Private Canopy

The Private Canopy is designed with flexibility in mind and set to stand the test of time. This home is designed to fit a 12.5 m block, but at 26 sq, emphasises open-plan living without compromising on space. The master bedroom sits at the head of the house with a luxurious, smartly designed walk-in-robe and ensuite, while the three additional bedrooms embrace a second bathroom to create a restful pocket at the rear. Meanwhile, the alfresco connects seamlessly to the open plan kitchen, dining and living areas to help natural light spread through the heart of the home. The home's entryway links to a versatile lounge room perfect for all kinds of lifestyles – entertaining guests, a family night in or those who seek simple, quiet relaxation.

## Floorplan

### *Private Canopy*

- 4 — Bedrooms
- 2 — Bathrooms
- 2 — Living areas
- Study
- 1 — Alfresco
- 26sq — Home size
  
- 12.5m — Minimum Lot Width
- 32m — Minimum Lot Depth



# Facade Options



# Versatile Context

The Versatile Context is the ideal home for family living. The master bedroom, situated at the front of the home, features a walk-in-robe and ensuite and is the first of four bedrooms to frame the central, community-focused kitchen, living, dining and outdoor area. For those after-dinner movie nights, the neighbouring theatre room is the perfect place for the family to stretch out for some quality time. At 25 sq, the Versatile Context lives up to its name – fit for both an established family that enjoys the space and a growing unit with more little ones on the way. This plan will set the stage for many of life’s unforgettable moments to come.

## Floorplan

### *Versatile Context*

- 4 — Bedrooms
- 2.5 — Bathrooms
- 2 — Living areas
- Study
- 1 — Alfresco
- 25sq — Home size

- 14m — Minimum Lot Width
- 28m — Minimum Lot Depth



# Facade Options



# Intimate Canvas

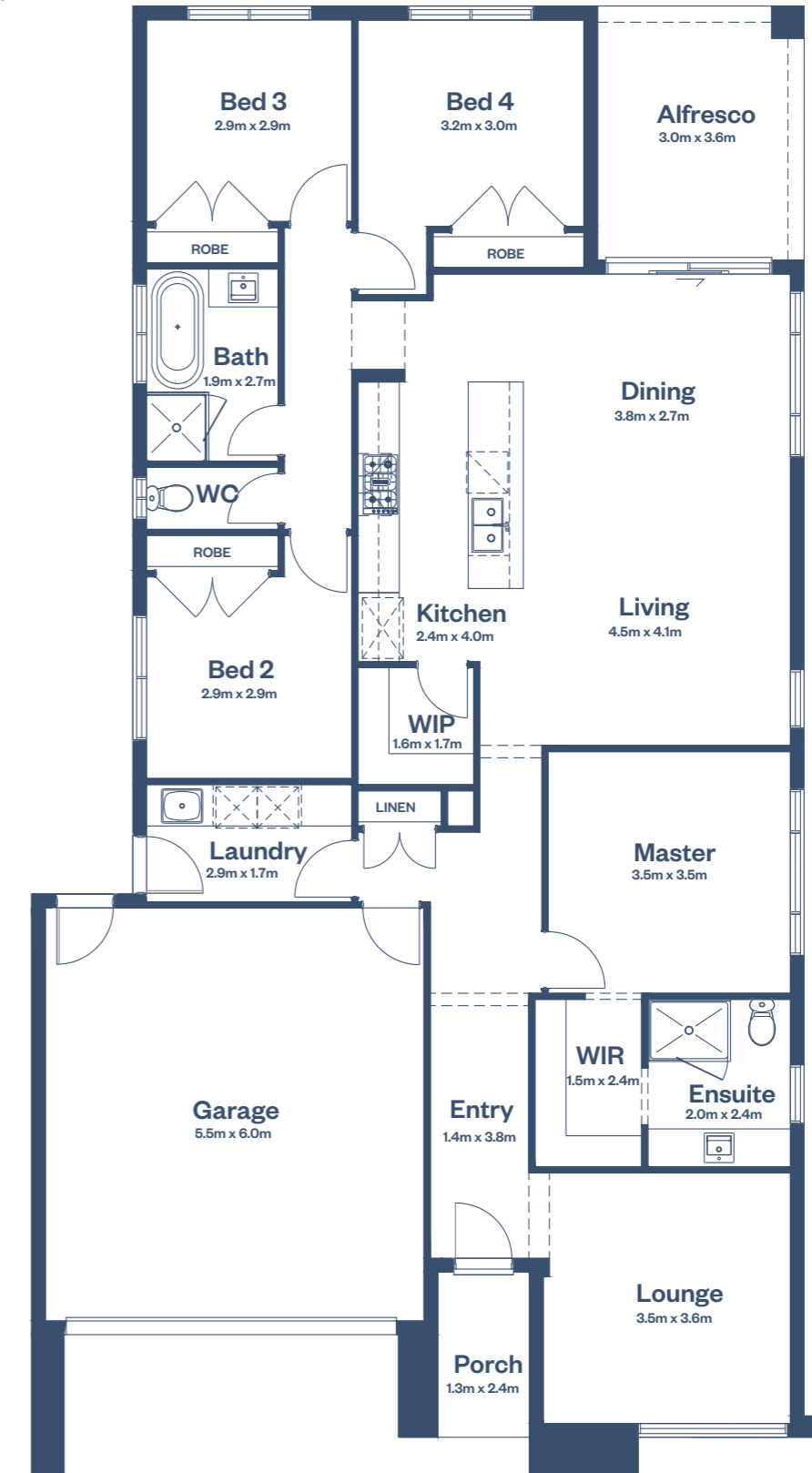
The Intimate Canvas is just that – a blank canvas designed to fit a 12.5 m block and made for those who seek a cosier, more intimate space with all the offerings you’d expect to find in a larger home. The master suite is centrally but privately nestled beside the open-plan kitchen, dining and living areas and features a discreet ensuite accessed via a walk-in-robe. The three remaining bedrooms are tucked away at the back, shifting focus towards the self-contained lounge room at the front of the home ideal for entertaining. The Intimate Canvas is ideal for both new families and the relaxed downsizer.

## Floorplan

### *Intimate Canvas*

- 4 — Bedrooms
- 2 — Bathrooms
- 2 — Living areas
- Study
- 1 — Alfresco
- 22.5sq — Home size

- 12.5m — Minimum Lot Width
- 28m — Minimum Lot Depth



# Facade Options





# Organic Precinct

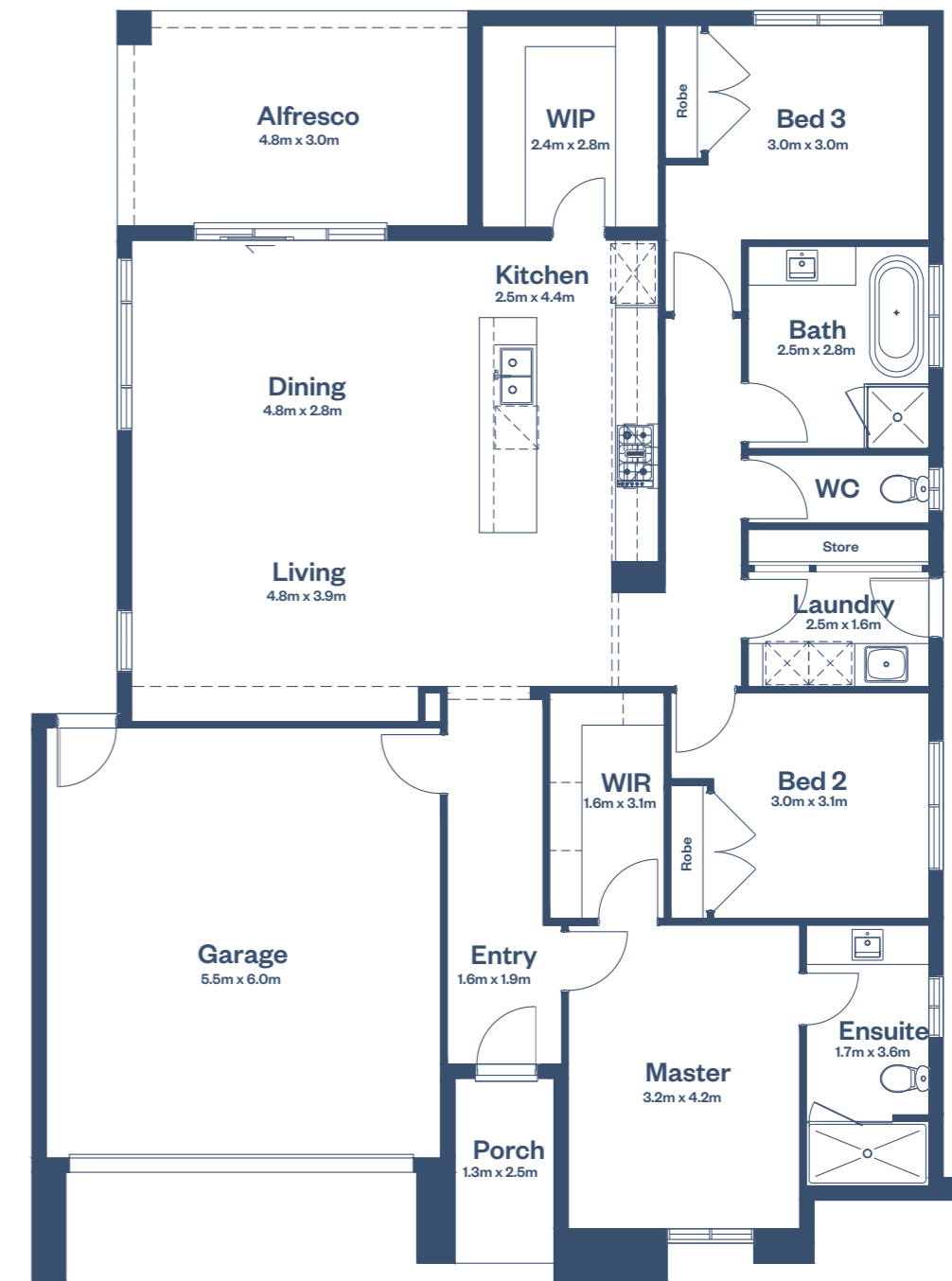
Sleek, spacious, practical. The Organic Precinct is a certifiable entertainer's dream. Treat your family and guests to a Michelin-star experience night after night thanks to an open-concept kitchen, living and dining area – complete with an adjoining walk-in pantry that gives this home an unbeatable natural flow. With a total of three bedrooms, including a private master suite to the front with a generous walk-in-robe and ensuite, it's the perfect floorplan for creating memories that will last a lifetime.

## Floorplan

### *Organic Precinct*

- 3 — Bedrooms
- 2 — Bathrooms
- 1 — Living areas
- Study
- 1 — Alfresco
- 22sq — Home size

- 14m — Minimum Lot Width
- 25m — Minimum Lot Depth



# Facade Options





Disclaimer: The information contained in this promotional material is for illustration purposes only and is subject to change. Statements, figures, calculations, plans, images and representations are indicative only. Images may include sketches, artist impressions and computer generated images. Specifications, details, fittings, fixtures, façades, elevations and floorplans (including internal and external dimensions and orientation) may be changed without notice. Photographs, illustrations and artists impressions depicting landscaping, interiors and exteriors are intended as a guide only and are subject to change without notice. Prospective purchasers must make their own enquiries to satisfy themselves as to all aspects of any Glenvill project, design or product and further should seek independent legal and financial advice in relation to all of the information contained herein. The information in this document is believed to be correct but is not guaranteed. This document is not an offer or a contract. Glenvill expressly disclaims any and all liability relating to, or resulting from, the use of or reliance on, any information contained in this document by any person. Printed February 2022.

