



## DESIGNER SERIES

Residential  
Garage Doors

*Bring your  
dream home to life!*

# CONTENTS

The Designer Series Door .....	2
Board and Batten .....	3
Cedar Clad .....	5
Carriage Style .....	7
Panoramic Glazed .....	9
ACM Clad .....	11
Aluminium Board and Batten .....	13
Copper Door .....	15
The Corten Door .....	17
The Flushmounted Door .....	19
Custom Clad Inspiration.....	21
Notes .....	22

# THE DESIGNER SERIES DOOR

The Glideaway Designer Series Door is a range of predominantly sectional doors manufactured in New Zealand to the highest standards.

Glideaway understand that if you are investing in a premium grade garage door, there is a level of quality expected.

There are 4 different categories within the Designer Series range;

## **The Timber Range:**

These doors are constructed from an aluminium frame, which can be powdercoated or left as a mill finish, they are then clad with a marine grade ply, and finally clad with the desired timber finish.

The standard products in the range are; Cedar clad, Ply and batten, and the Carriage style doors. All these products can be altered to suit the style the customer is after.

## **The Contemporary Range:**

These doors are constructed from a range of materials depending on the style chosen. This range includes more modern look doors such as the panoramic glazed doors, and the ACM clad doors. All these products can be altered to suit the style the customer is after.

## **The Flushmounted Range:**

Often called the 'Hidden Garage Door', the Glideaway Flushmounted doors are able to be manufactured in 2 different operating styles;

The single piece 'Tilt-up' door - ideal for concealing horizontal lines for vertically clad setups.

The sectional door - all the advantages of a traditional sectional door but as a flush fit door.

## **The Custom Clad Range:**

This range of doors is becoming more common with customers coming to Glideaway with the cladding they are wanting, we then decide on the best frame/base for the door, whether it be the welded aluminium frame, or extruded aluminium. This can be done for the Flushmounted doors also.

Contact your Gildeaway agent to find out more on our Designer Series Garage Doors.



# — BOARD AND BATTEN



Above: The Classic Board and Batten pictured, in a stained finish.

## **The Board and Batten Door.**

The Board and batten door is a very common and simple garage door concept.

Customisable batten layout and widths/thickness make it for a door that can suit a wide range of home styles.

The Board and Batten door comes standard with an aluminium welded box section frame, which is clad with 9mm meranti ply wood, then overlaid with battens in the desired layout.

The Board and Batten door comes standard from the factory without any stain or sealer applied.

Options for this door include; Insulation: EPS core with a ply wood backing sheet. Windows: Toughened glass or acrylic windows can be added, with options for tinted, frosted or clear glazing.

# TIMBER RANGE. BOARD AND BATTEN

THE CLASSIC.



THE TRADITIONAL



THE VERTICAL/HORIZONTAL





# — CEDAR CLAD



Above: The Horizontally clad cedar door in 90x10 redwood cedar.

## **The Cedar Clad Door.**

Cedar clad doors are still a favorite among new and existing homes throughout New Zealand. Glideaway offer 2 main options for the cedar, the first is the most common which is a 90x10 TG&V, the second is the wider 150x10 TG&V both in western red cedar.

There are 2 orientations as standard, horizontally and vertically clad.

The Cedar Clad door comes standard with an aluminium welded box section frame, which is clad with 9mm meranti ply wood, then clad over with the cedar and layout of choice.

The Cedar Clad door comes standard from the factory without any stain or sealer applied.

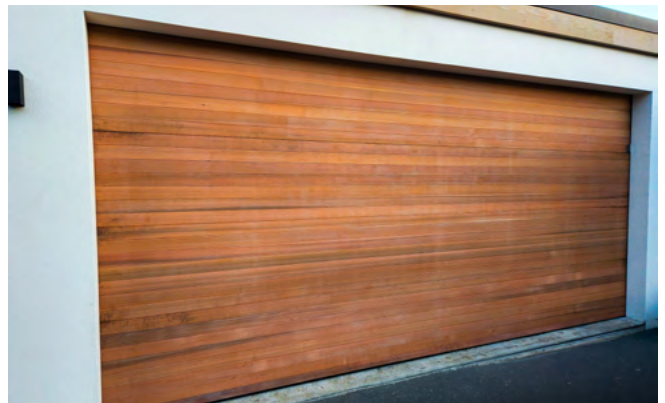
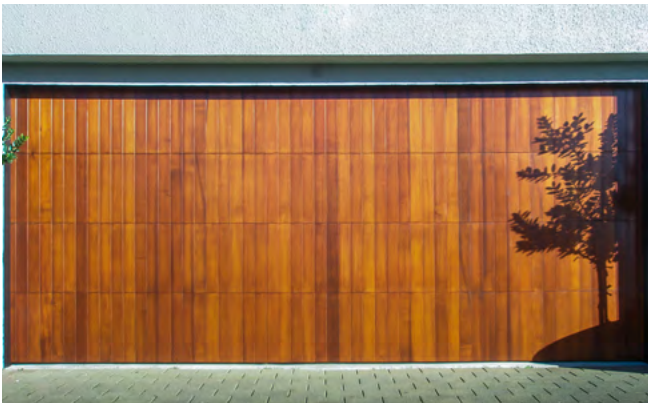
Options for this door include; Insulation: EPS core with a ply wood backing sheet. Windows: Toughened glass or acrylic windows can be added, with options for tinted, frosted or clear glazing.

# TIMBER RANGE. CEDAR CLAD

THE VERTICALLY CLAD.



THE HORIZONTALLY CLAD.





# CARRIAGE STYLE



Above: The Carriage Style door, clad with customers choice of cladding.

## The Carriage Style Door.

The Carriage Style door is one of our most beautiful timber doors, and can be constructed in a number of different ways to get the desired look.

The above image is showing the most common Carriage Style look, with the double doors having 2 'X' patterns, and the single doors having 1 'X' pattern. The Carriage style door can be clad with vertical or horizontal cladding before being overlaid with the batten pattern, or can be ply with the overlaid batten pattern.

The Carriage style door comes standard with an aluminium welded box section frame, which is clad with 9mm meranti ply wood, clad over with cedar (if applicable), then overlaid with battens in the desired layout.

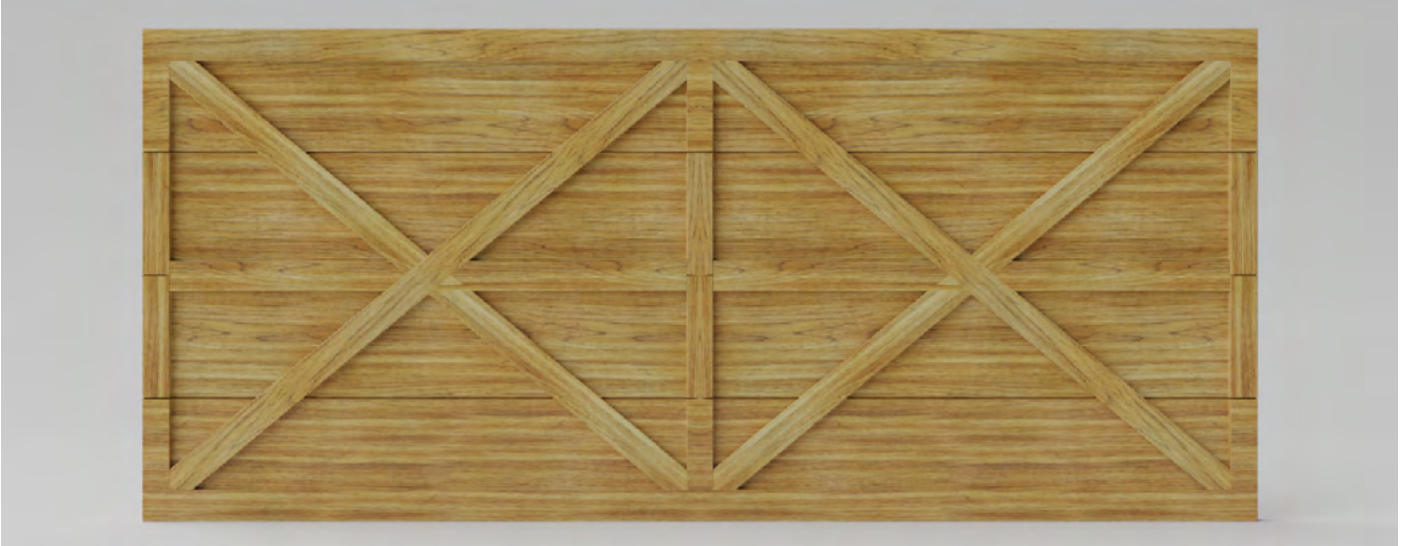
The Carriage style door comes standard from the factory without any stain or sealer applied.

Options for this door include; Insulation: EPS core with a ply wood backing sheet. Windows: Toughened glass or acrylic windows can be added, with options for tinted, frosted or clear glazing.

[www.glideaway.co.nz](http://www.glideaway.co.nz)



# TIMBER RANGE. CARRIAGE STYLE



# --- PANORAMIC GLAZED



Above: The Panoramic Glazed door, with clear glass glazing.

## **The Panoramic Glazed Door.**

The Panoramic Glazed sectional door is a great way to add natural light to your garage, often constructed with frost glass or acrylic glazing to keep the privacy and also allow for natural light.

The Panoramic Glazed door is ideal on a modern home, and is often the stand out feature for the home.

The Panoramic Glazed is constructed from an extruded aluminium sash frame. The frame can be powdercoated or anodized, making it fit in no matter the colour scheme.

The standard glazing options are toughened glass, or acrylic, and these are available in clear, grey tint, or frosted.



# CONTEMPORARY RANGE. PANORAMIC GLAZED





# — ACM CLAD



Above: The ACM clad door, in a spray colour finish.

## **The ACM Clad Door.**

The ACM clad is the subtle touch of detail that fits in with any modern home. With customisable negative details you can add your own touch to this door.

The ACM Clad door comes standard with an aluminium welded box section frame, which is then clad with the ACM sheet.

The ACM door comes in standard colours; Black, Silver, and White. Spray colour finish can be applied to the ACM cladding to match in to your home.

Options for this door include; Insulation: EPS core with a aluminium backing sheet. Windows: Toughened glass or acrylic windows can be added, with options for tinted, frosted or clear glazing.

# CONTEMPORARY RANGE. **ACM CLAD**





# ALUMINIUM BOARD AND BATTEN



Above: The Aluminium Board and Batten door, in a charcoal colour finish.

## The Aluminium Board and Batten Door.

This door is one Glideaways newest product in the Designer Series lineup.

With the Aluminium Board and Batten door, you get that classic 'ply and batten' look without the maintenance and hassle.

Constructed from a powdercoated extruded aluminium sash, this door is a light weight door while still maintaining its strength. The inserts are an aluminium sheet, which are also powdercoated.

Options for this door include; Insulation: EPS core with a aluminium backing sheet. Windows: Toughened glass or acrylic windows can be added, with options for tinted, frosted or clear glazing.



# CONTEMPORARY RANGE. **ALUMINIUM BOARD AND BATTEN**



# COPPER DOOR



Above: The Copper flat panel, after the oxidization process.

## The Copper Door.

The copper door is one of those doors that is a real statement piece.

The Copper Door is rollformed from 1mm copper, and comes from the factory looking like the door on the adjacent page. Depending on the doors location will depend on the time it takes to oxidize like the door above. Or if keep polished the shine will stay.

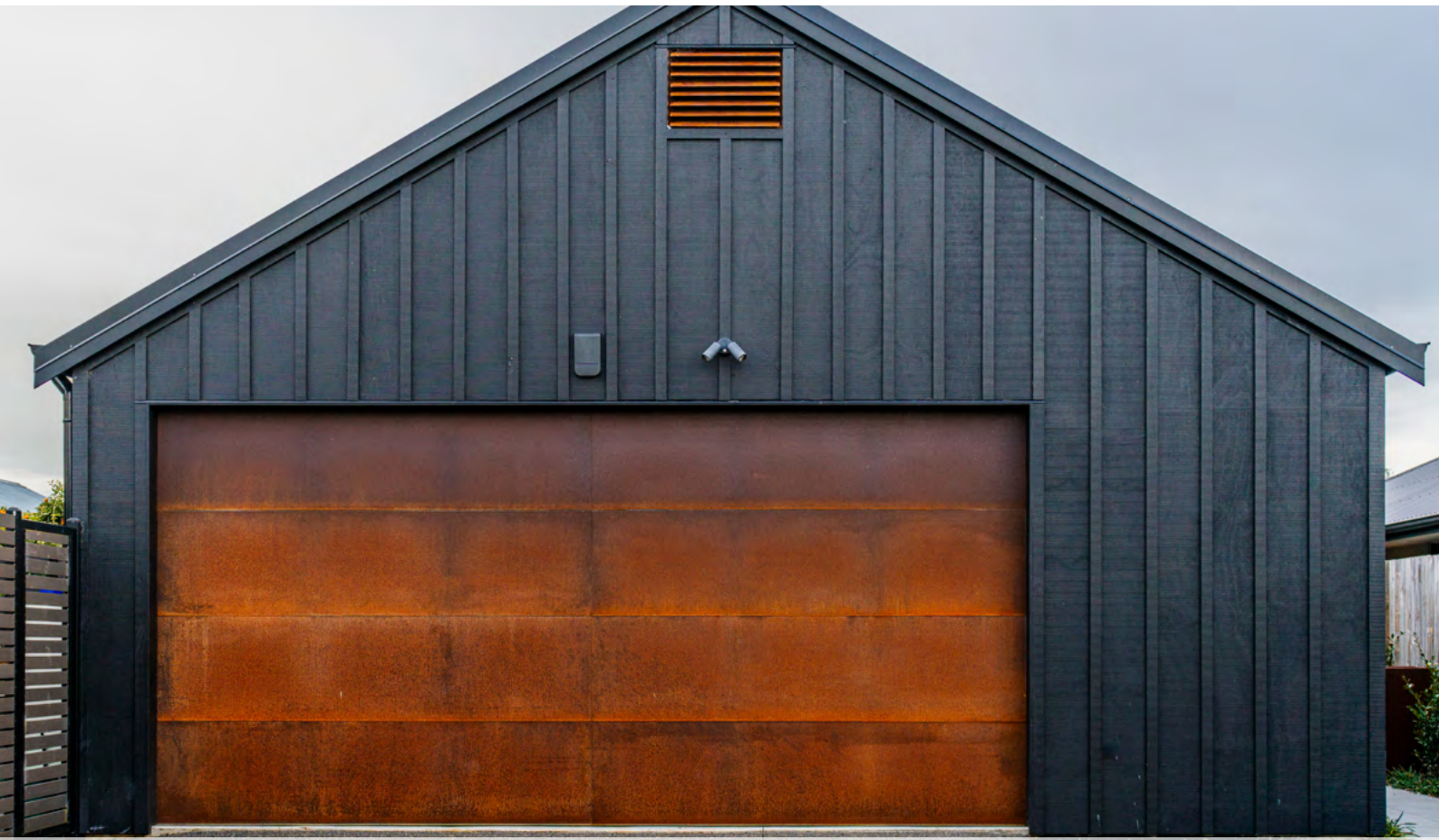
Options for this door include; Insulation: A range of insulation options from economy to premium. Windows: Aluminium sash framed, toughened glass or acrylic windows can be added, with options for tinted, frosted or clear glazing.

# CONTEMPORARY RANGE. **COPPER DOOR**





# — THE CORTEN DOOR



Above: The Corten steel clad door, after being installed for 2 years.

## **The Corten Clad Door.**

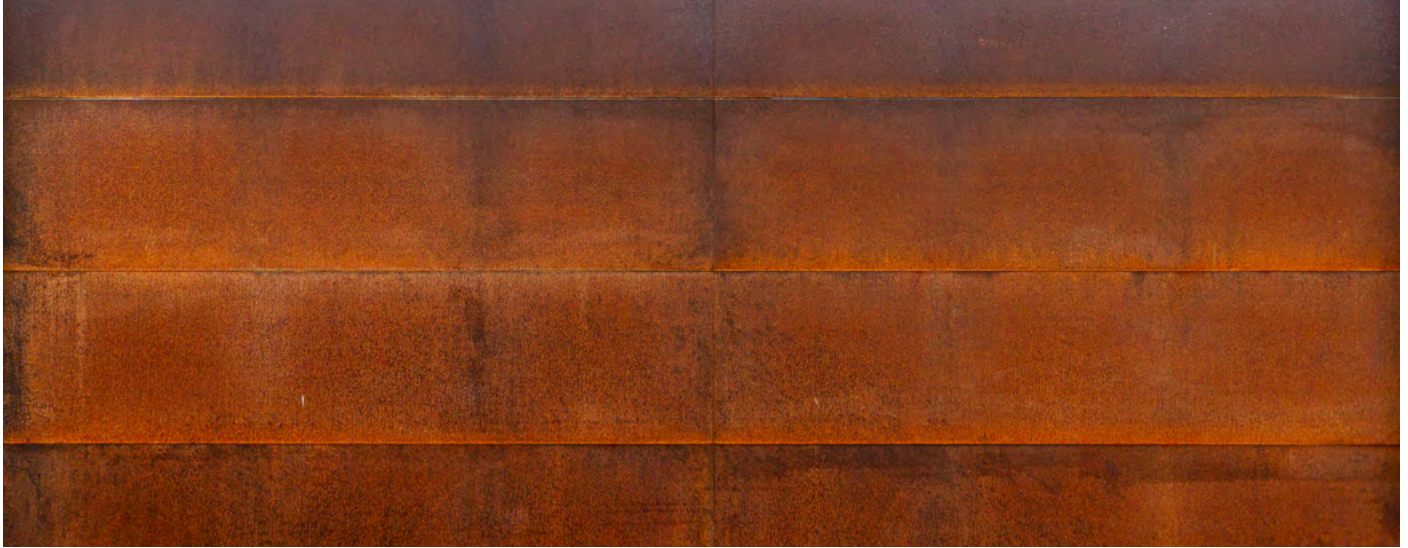
The Corten door is a door that gets better with age and works well with contemporary or classic style homes.

The steel starts as black steel and as it oxidizes this causing the rusting and gives it that beautiful patina that we know as Corten steel.

The Corten Door comes standard with an aluminium welded box section frame, which is then clad with the Corten steel sheet.

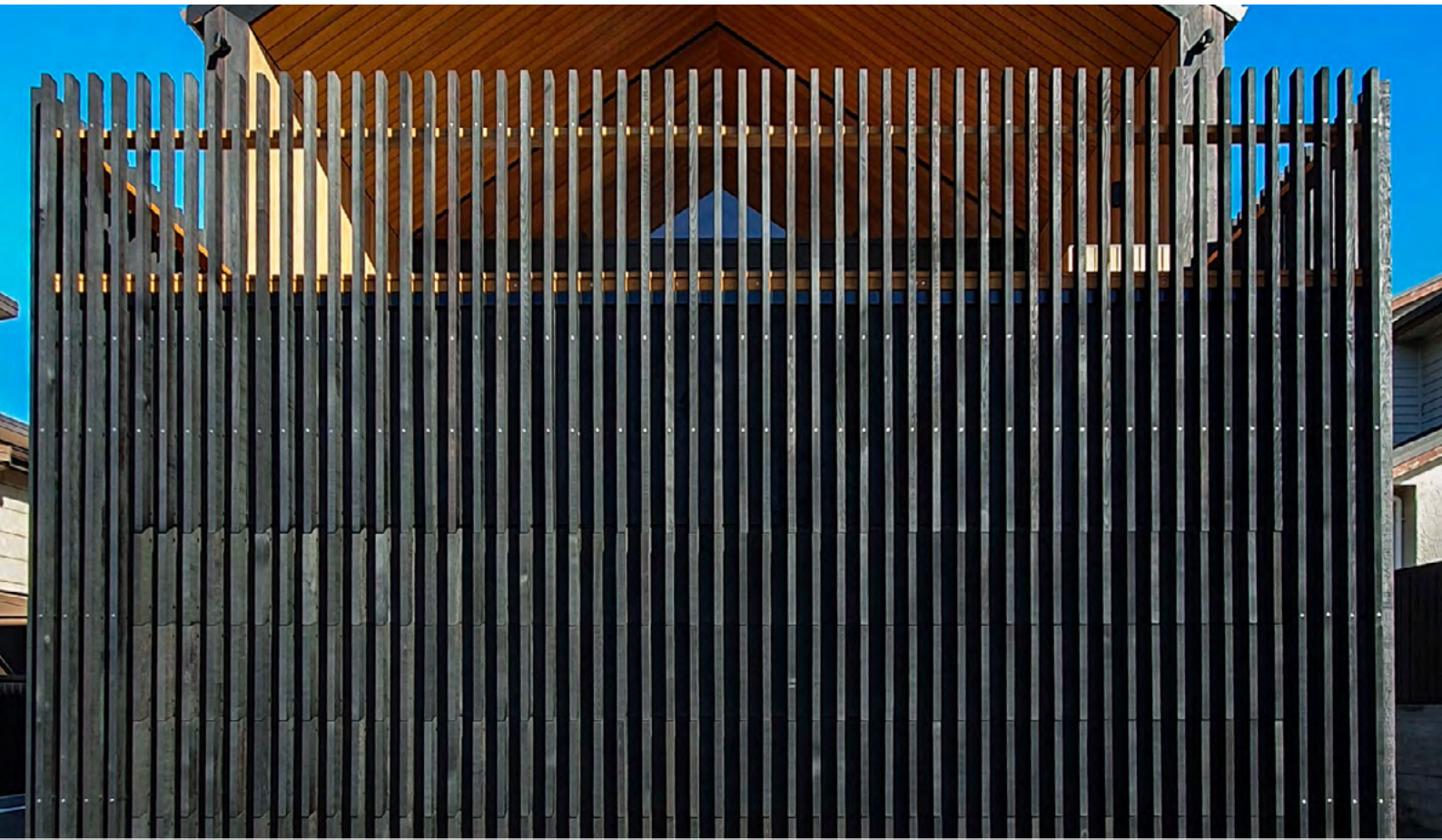
Options for this door include; Insulation: EPS core with a aluminium backing sheet. Windows: Aluminium sash framed, toughened glass or acrylic windows can be added, with options for tinted, frosted or clear glazing.

# — CONTEMPORARY RANGE. **CORTEN DOOR**





# — THE FLUSHMOUNTED DOOR



Above: Glideaway Flushmounted sectional door clad in vertical battens

## **The Flushmounted Door.**

The Flushmounted door is often referred to as the 'hidden garage door', which is really what it is.

This product is highly customisable when it comes to the cladding to ensure you can match it in seamlessly to your facade.

Typically the Flushmounted door comes standard with an aluminium welded box section frame, which is then clad with the desired cladding.

The Flushmounted door has been used throughout New Zealand on high end modern homes, and it really adds a wow factor to something as simple as the garage door.



# FLUSHMOUNTED DOOR INSPIRATION.





# CUSTOM CLAD INSPIRATION





# CUSTOM CLAD INSPIRATION





# NOTES

# NOTES

GLIDEAWAY GARAGE DOORS LTD

**FREE PH:** 0508 611 166

**EMAIL:** SALES@GLIDEAWAY.CO.NZ

**WWW.GLIDEAWAY.CO.NZ**

