



BY  
CMT  
GROUP

# Product Catalogue Overview

Make your next step  
a safe step

[haptix.co.nz](http://haptix.co.nz)  
0800 HAPTIX

<sup>TM</sup>  
**haptix**





# Contents

Brass Tactile Indicators .....	04
Tactile Indicators.....	05
Brass Stair Nosings.....	08
Surface Mount Stair Nosings .....	09
Rebated Timber/Tile Stair Nosings .....	12
Carpet & Vinyl Stair Nosings .....	13
Floor Trims & Covers.....	16
Other Stair Nosings & Accessories .....	18
Other Accessories.....	19

Many of our products have customisation options.

Please see our full catalogue for more information.







# Brass Tactile Indicators



## BH10P

### Brass Tactile Stud

- Grooved 10 ring top only
- Plain sides
- Rear pin
- For hard surfaces
- Pin shaft, requires epoxy



## DBBRSSLNFN

### Brass Tactile Bar

- Plain sides
- Rear pins
- Sloped sides for safe transition
- For hard surfaces
- Pin shaft, requires epoxy



## BH60P

### Brass Tactile Stud with Carb Insert

- Anti-slip carborundum insert
- Sloped sides for safe transition
- For hard surfaces
- Pin shaft requires epoxy

## Did you know?

Choosing tactiles for your building makes public spaces more accessible to those with vision impairments.





# Tactile Indicators



## AH10N

### Aluminium Tactile Studs with Plug

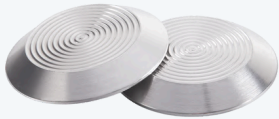
- Grooved 10 ring top only
- Rear nylon plug
- For all surfaces



## AH10P

### Aluminium Tactile Stud

- Grooved 10 ring top only
- Rear pin
- Sloped sides for safe transition
- For hard surfaces
- Pin shaft requires epoxy



## SH10F

### Stainless Steel Stemless Tactile Stud

- Grooved 10 ring top only
- Without rear stud
- Sloped sides for safe transition
- For hard surfaces
- CA290 Adhesive required



## SH75N

### Stainless Steel Tactile Stud with Poly Insert

- Grooved 10 ring poly insert
- Plain sides
- Rear nylon plug
- For all surfaces
- Plug, friction fit



## SH10N

### Stainless Steel Tactile Stud

- Grooved 10 ring top only
- Rear nylon plug
- Sloped sides for safe transition
- For all surfaces
- Plug, friction fit



## TacStud

### Stainless steel individual tactile

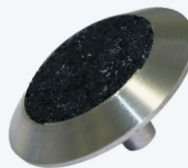
- Plain sides
- Sloped sides for safe transition
- For hard surfaces
- Pin shaft, requires epoxy



## SH60N

### Stainless Steel Tactile Stud with Carb Insert

- Anti-slip carborundum insert
- Rear nylon stud
- Sloped sides for safe transition
- For all surfaces
- Plug, friction fit



## TacStud

### Stainless Steel Tacstud with Carb Insert

- Anti-slip carborundum insert
- Plain sides
- Sloped sides for safe transition
- For hard surfaces
- Pin shaft, requires epoxy



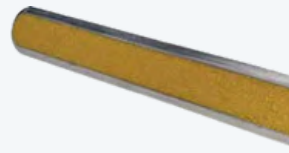




## TacBar

Stainless Steel Hounds Teeth Directional Bar

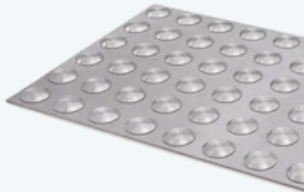
- Marine grade stainless steel
- Sloped sides for safe transition
- For hard surfaces
- Pin shaft, requires epoxy



## TacBar

Stainless Steel Directional Bar with Carb Insert

- Excellent anti-slip rating
- Pin shaft, requires epoxy
- Marine grade stainless steel
- Superb abrasion qualities



## SH10 Plate

Stainless Steel Warning Tactile Plate

- Increased strength
- Quick and easy installation
- For hard surfaces
- CA290 Adhesive, Mechanical fixings



## SH60 Plate

Stainless Steel Warning Tactile Plate with Insert

- Increased strength
- Anti-slip carborundum inserts
- For hard surfaces
- CA290 Adhesive, Mechanical fixings



## THISS25

Polyurethane TacStud with Star-Shaft

- Excellent anti-slip rating
- Easy friction fit install
- UV stable thermo polyurethane
- Superb abrasion qualities



## THIFS25

Polyurethane TacStud with Ribbed Shaft

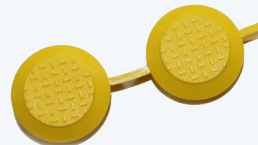
- Excellent anti-slip rating
- Easy friction fit install
- UV stable thermo polyurethane
- Superb abrasion qualities
- For asphalt surfaces



## TacBar

Polyurethane TacBar

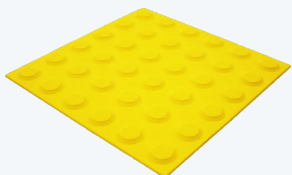
- Excellent anti-slip rating
- Easy friction fit install
- UV stable thermo polyurethane
- For concrete, asphalt, timber and tile surfaces



## TacStrip

Polyurethane TacStrip

- Excellent anti-slip rating
- Easy friction fit install
- UV stable thermo polyurethane
- Superb abrasion qualities



## TacMat

Hazard Polyurethane TacMat

- Excellent anti-slip rating
- Easy retro fit install
- UV stable thermo polyurethane
- For hard surfaces



## TacMat

Directional Polyurethane TacMat

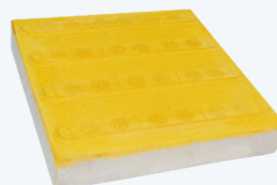
- Excellent anti-slip rating
- Easy retro fit install
- UV stable thermo polyurethane
- For hard surfaces



## Warning Pavers

Warning Tactile Pavers

- Made in New Zealand
- High strength concrete
- Excellent anti-slip rating



## Directional Pavers

Directional Tactile Pavers

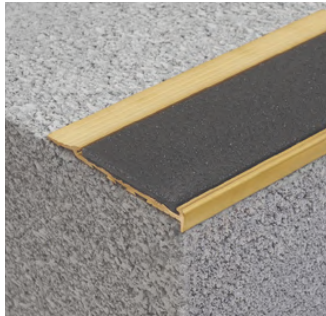
- Made in New Zealand
- High strength concrete
- Excellent anti-slip rating







# Brass Stair Nosings



## DKR104-H

Solid Brass Safety Stair Nosing with Carb Insert

- Ramped back, short front
- Interior and exterior use
- Surface mount
- For concrete, timber, tile & vinyl surfaces



## DKR142-H

Solid Brass Safety Stair Nosing with Carb Insert

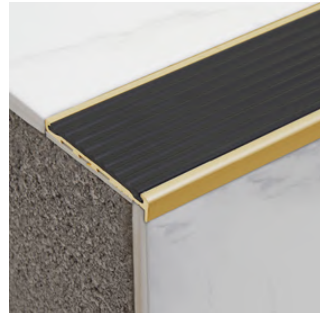
- Ramped back, folded front
- Interior and exterior use
- Surface mount
- For concrete, timber, tile & vinyl surfaces



## IKB140-H

Solid Brass Stair Nosing with Carb Insert

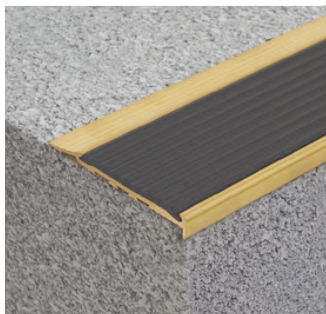
- Square back, short front
- Interior and exterior use
- Rebated
- For concrete, timber & tile surfaces



## IBB140-H

Solid Brass Stair Nosing with Poly Insert

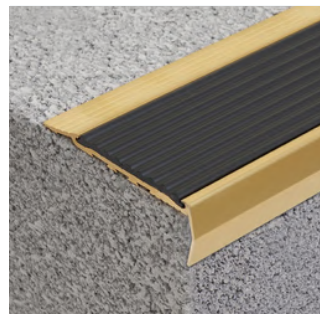
- Square back, short front
- Interior and exterior use
- Rebated
- For concrete, timber & tile surfaces



## SBR104-H

Solid Brass Safety Stair Nosing with Poly Insert

- Ramped back, short front
- Interior and exterior use
- Surface mount
- For concrete, timber, tile & vinyl surfaces



## SBR142-H

Solid Brass Safety Stair Nosing with Poly Insert

- Ramped back, folded front
- Interior and exterior use
- Surface mount
- For concrete, timber, tile & vinyl surfaces



## INB033-H

Solid Brass Safety Stair Nosing

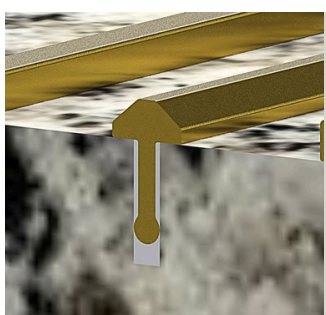
- Square edged
- Interior and exterior use
- Rebated
- For concrete, timber & tile surfaces



## SNB041-H

Solid Brass Safety Stair Nosing

- Square back, short front
- Interior and exterior use
- Surface mount, rebated, vinyl & rubber applications



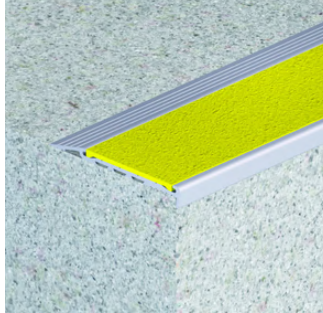
## BAR040-H

Solid Brass Safety Stair Nosing

- Interior and exterior use
- Rebated, requires epoxy



# Surface Mount Stair Nosings



## DKR104

### Aluminium Safety Stair Nosing with Carb Insert

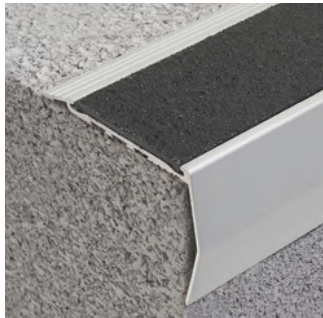
- Ramped back, short front
- Carborundum insert
- Surface mount
- For concrete, timber, tile and vinyl surfaces



## DKR103

### Aluminium Safety Stair Nosing with Carb Insert

- Ramped back, folded front
- Carborundum insert
- Surface mount
- For concrete, timber, tile and vinyl surfaces



## DKR135

### Aluminium Safety Stair Nosing with Carb Insert

- Ramped back, long folded front
- Carborundum insert
- Pre-drilled and countersunk
- For concrete, timber, tile and vinyl surfaces



## DKR404

### Aluminium Safety Stair Nosing with Striped Carb Insert

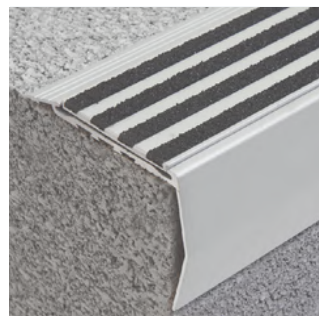
- Ramped back, short front
- Striped carborundum insert
- Pre-drilled and countersunk
- Surface mount



## DKR403

### Aluminium Safety Stair Nosing with Striped Carb Insert

- Ramped back, folded front
- Striped carborundum insert
- Pre-drilled and countersunk
- Surface mount



## DKR435

### Aluminium Safety Stair Nosing with Striped Carb Insert

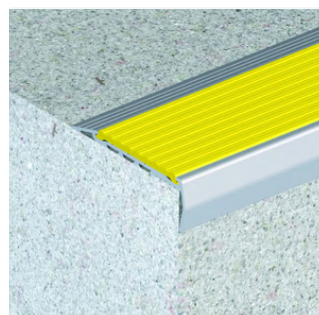
- Ramped back, long folded front
- Striped carborundum insert
- Pre-drilled and countersunk
- Surface mount



## SBR104

### Aluminium Safety Stair Nosing with Poly Insert

- Ramped back, short front
- Ribbed polymer insert
- Pre-drilled and countersunk
- Surface mount



## SBR103

### Aluminium Safety Stair Nosing with Poly Insert

- Ramped back, folded front
- Ribbed polymer insert
- Pre-drilled and countersunk
- Surface mount



## SBR135

### Aluminium Safety Stair Nosing with Poly Insert

- Ramped back, long folded front
- Ribbed polymer insert
- Pre-drilled and countersunk
- Surface mount

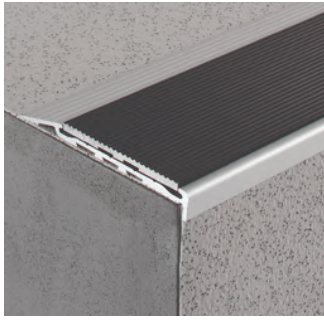


## SNR019

### Aluminium Safety Stair Nosing

- Safety ribbed aluminium
- Ramped back, short front
- CA290 Adhesive
- Surface mount

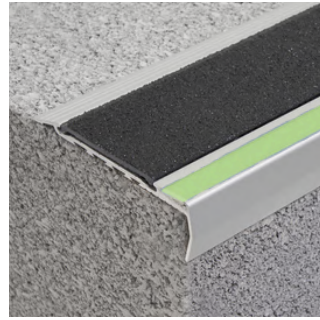




## FMR104

### Aluminium Safety Stair Nosing with Aluminium Insert

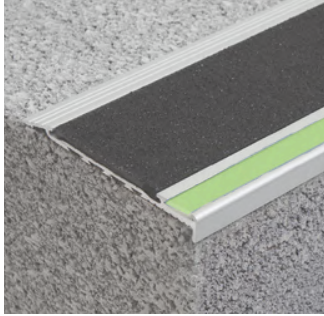
- Ribbed aluminium insert
- Ramped back, short front
- Pre-drilled and countersunk
- Surface mount



## LKR127

### Aluminium Safety Stair Nosing with Carb Insert and Lumo Strip

- Ramped back, folded front
- Carborundum insert
- Pre-drilled and countersunk
- Surface mount



## LKR128

### Aluminium Safety Stair Nosing with Carb Insert and Lumo Strip

- Ramped back, short front
- Carborundum insert
- Pre-drilled and countersunk
- Surface mount



## LKR428

### Aluminium Safety Stair Nosing with Carb Insert and Lumo Strip

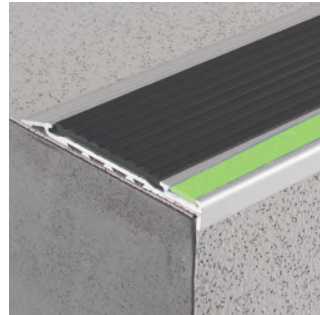
- Ramped back, short front
- Carborundum insert
- Pre-drilled and countersunk
- Surface mount



## LKR427

### Aluminium Safety Stair Nosing with Carb Insert and Lumo Strip

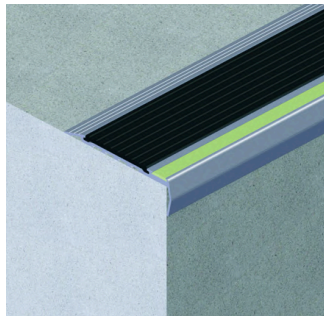
- Ramped back, folded front
- Carborundum insert
- Pre-drilled and countersunk
- Surface mount



## LBR128

### Aluminium Safety Stair Nosing with Poly Insert and Lumo Strip

- Ramped back, short front
- Ribbed polymer insert
- Pre-drilled and countersunk
- Surface mount



## LBR127

### Aluminium Safety Stair Nosing with Poly Insert and Lumo Strip

- Ramped back, folded front
- Ribbed polymer insert
- Pre-drilled and countersunk
- Surface mount



## TKR016

### Anti-Slip Strips

- Surface Mount
- Can be used as a stair nosing or along slippery surfaces for traction
- Ramped front, ramped back



## GKR030

### Anti-Slip Stair Nosing

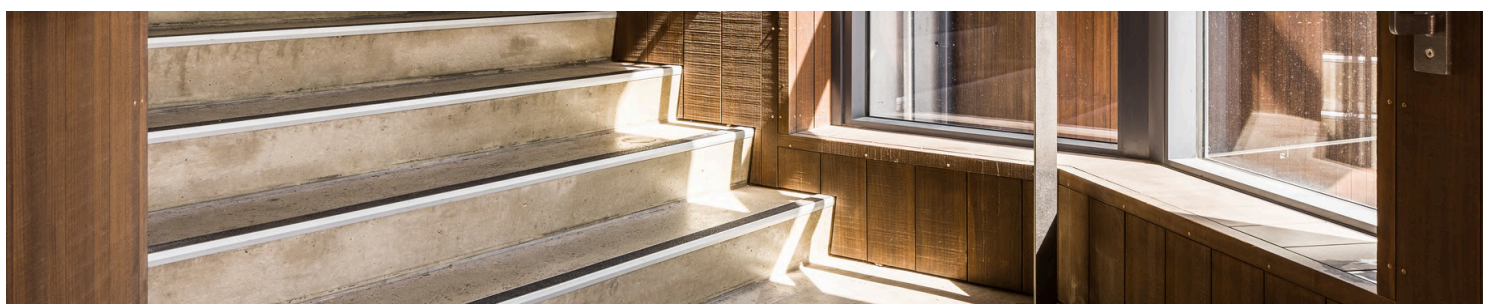
- CA290 adhesive and mechanical fixings
- Surface Mount
- Ramped back, short front
- Carborundum



## GKR017

### Anti-Slip Stair Nosing

- CA290 adhesive and mechanical fixings
- Surface Mount
- Ramped back, square front
- Carborundum









# Rebated Timber/Tile Stair Nosing



## IKB121

### Aluminium Safety Stair Nosing with Carb Insert

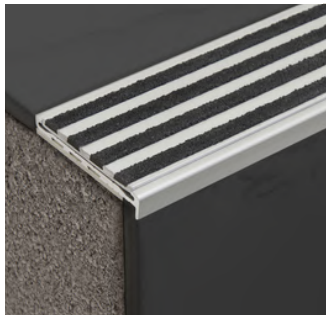
- Pre-drilled and countersunk
- Rebated
- For concrete, timber, & tile surfaces
- Square back, square front



## IKB140

### Aluminium Safety Stair Nosing with Carb Insert

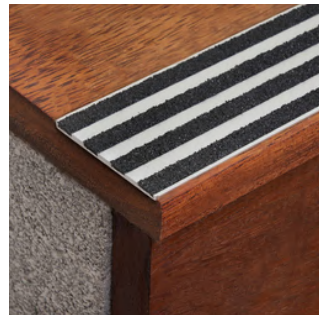
- Pre-drilled and countersunk
- Rebated
- For concrete, timber, & tile surfaces
- Square back, straight front



## IKB440

### Aluminium Safety Stair Nosing with Striped Carb Insert

- Rebated
- For concrete, timber, & tile
- Square back, short front



## IKB439

### Aluminium Safety Stair Nosing with Striped Carb

- Rebated
- For concrete, timber, & tile
- Square back, square front



## IBB121

### Aluminium Safety Stair Nosing with Poly Insert

- Pre-drilled and countersunk
- Rebated
- For concrete, timber, & tile
- Square back, square front



## IBB140

### Aluminium Safety Stair Nosing with Poly Insert

- Pre-drilled and countersunk
- Rebated
- For concrete, timber, & tile
- Square back, short front



## INB033

### Solid Aluminium Safety Stair Nosing

- CA290 Adhesive
- Rebated
- For concrete, timber, & tile
- Square back, square front



## IMB121

### Aluminium Safety Stair Nosing with Aluminium Insert

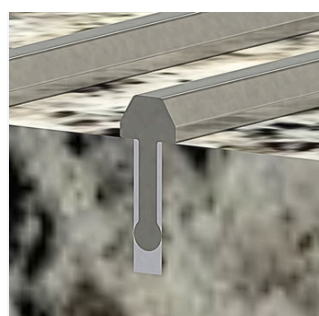
- Pre-drilled and countersunk
- Rebated
- For concrete, timber, & tile
- Square back, square front



## BAR040

### Rebated Aluminium Safety Stair Nosing Bars

- Installed in up to three strips
- Epoxy Fitted
- Rebated
- For concrete, timber & tile



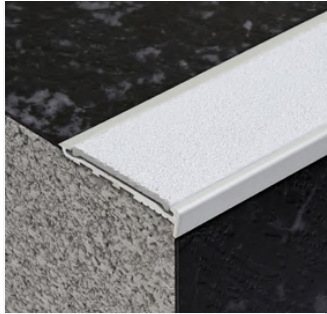
## BAR040-SS

### Rebated Stainless Steel Safety Stair Nosing Bars

- Installed in up to three strips
- Epoxy Fitted
- Rebated
- For concrete, timber, & tile



# Carpet & Vinyl Stair Nosing



## DKV105

Aluminium Safety Stair Nosing with Carb Insert

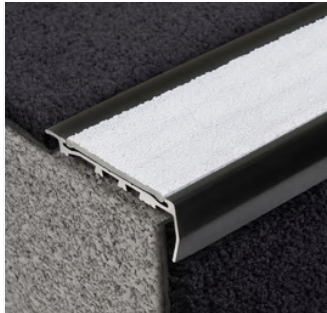
- Pre-drilled and countersunk
- CA290 Adhesive, Mechanical fixings
- For vinyl
- Square back, short front



## PKD106

Aluminium Safety Stair Nosing with Carb Insert

- Pre-drilled and countersunk
- For 4-6mm Carpet & Rubber
- Gripper back, short front



## PKD129

Aluminium Safety Stair Nosing with Carb Insert

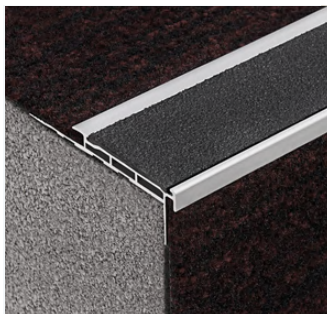
- Pre-drilled and countersunk
- For 4-6mm Carpet & Rubber
- Gripper back, folded front



## PKD143

Aluminium Safety Stair Nosing with Carb Insert

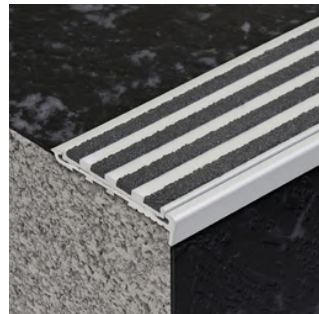
- Pre-drilled and countersunk
- For 8-10mm Carpet & Rubber
- Gripper back, short front



## PKD144

Aluminium Safety Stair Nosing with Carb Insert

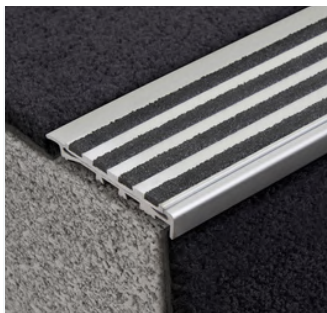
- Pre-drilled and countersunk
- For 4-6mm Carpet & Rubber
- Gripper back, short front



## DKV405

Aluminium Safety Stair Nosing with Striped Carb Insert

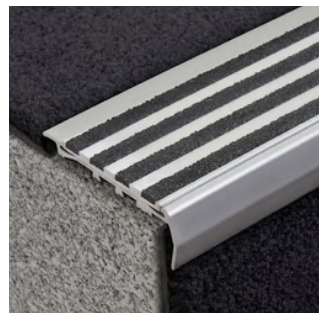
- Pre-drilled and countersunk
- For Vinyl
- Gripper back, short front



## PKD406

Aluminium Safety Stair Nosing with Striped Carb Insert

- Pre-drilled and countersunk
- For 4-6mm Carpet & Rubber
- Gripper back, short front



## PKD429

Aluminium Safety Stair Nosing with Striped Carb Insert

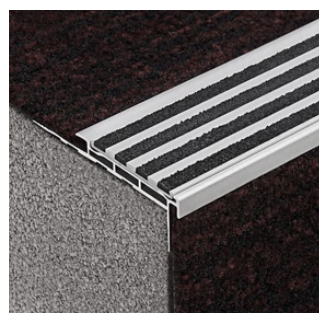
- Pre-drilled and countersunk
- For 4-6mm Carpet & Rubber
- Gripper back, folded front



## PKD443

Aluminium Safety Stair Nosing with Striped Carb Insert

- Pre-drilled and countersunk
- For 8-10mm Carpet & Rubber
- Gripper back, short front

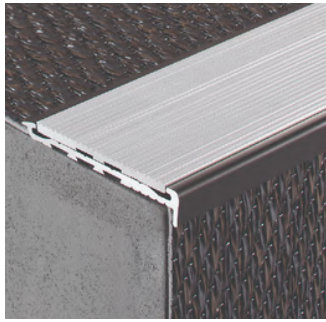


## PKD444

Aluminium Safety Stair Nosing with Striped Carb Insert

- Pre-drilled and countersunk
- For 4-6mm Carpet & Rubber
- Ramped back, short front

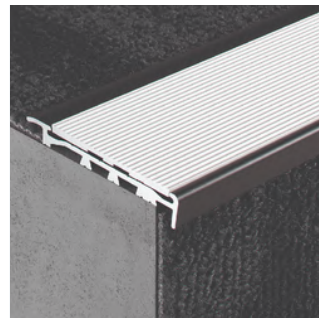




## FMV105

Aluminium Safety Stair Nosing with Aluminium Insert

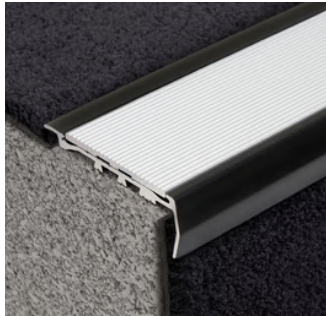
- Pre-drilled and countersunk
- For Vinyl
- Gripper back, short front



## FMD106

Aluminium Safety Stair Nosing with Aluminium Insert

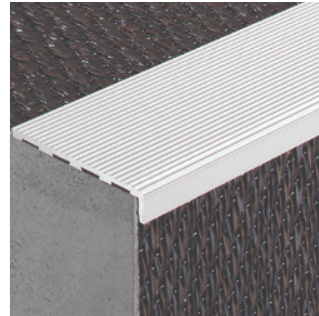
- Pre-drilled and countersunk
- For 4-6mm Carpet & Rubber
- Gripper back, short front



## FMD129

Aluminium Safety Stair Nosing with Aluminium Insert

- Pre-drilled and countersunk
- For 4-6mm Carpet & Rubber
- Gripper back, folded front



## SNB031

Solid Aluminium Safety Stair Nosing

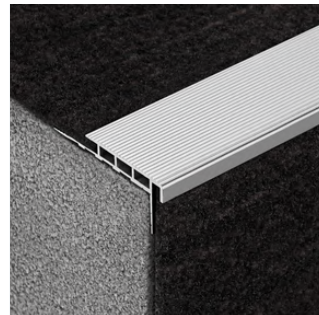
- CA290 Adhesive
- For Vinyl
- Square back, short front



## PND045

Solid Aluminium Safety Stair Nosing

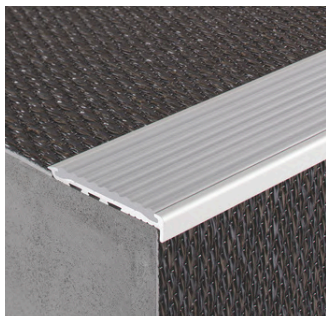
- Pre-drilled and countersunk
- For 8-10mm Carpet & Rubber
- Square back, short front



## PND046

Solid Aluminium Safety Stair Nosing

- Pre-drilled and countersunk
- For 4-6mm Carpet & Rubber
- Square back, short front



## SBV105

Aluminium Safety Stair Nosing with Poly Insert

- Pre-drilled and countersunk
- CA290 Adhesive, Mechanical fixings
- For Vinyl
- Ramped back, short front



## PBD106

Aluminium Safety Stair Nosing with Poly Insert

- Pre-drilled and countersunk
- For 4-6mm Carpet & Rubber
- Gripper back, short front



## PBD129

Aluminium Safety Stair Nosing with Poly Insert

- Pre-drilled and countersunk
- For 4-6mm Carpet & Rubber
- Gripper back, folded front



## PBC102

Aluminium Safety Stair Nosing with Poly Insert

- Pre-drilled and countersunk
- For thick Carpet
- Ramped back, folded front



## PBD143

Aluminium Safety Stair Nosing with Poly Insert

- Pre-drilled and countersunk
- For 8-10mm Carpet & Rubber
- Gripper back, short front



## PBD144

Aluminium Safety Stair Nosing with Poly Insert

- Pre-drilled and countersunk
- For 4-6mm Carpet & Rubber
- Gripper back, short front





↑  
You are at lower  
ground entrance  
Level 2 Reception  
Great Rooms  
Meeting Rooms  
Exit



# Floor Trims & Covers



## EC2V

### Square Edge, Two Part Expansion Joint Cover

- Provides safe transitions
- Adjustable width 115-125mm
- Suitable for most hard surfaces
- Mechanical fixings



## CSA Series

### Aluminium Floor Cover

- Designed for smooth transition between different floor surfaces
- Supplied complete with fixings
- Available in 50mm and 75mm widths



## EC2R

### Square Edge, Two Part Expansion Joint Cover

- Provides safe transitions
- Adjustable width 130-140mm
- Suitable for most hard surfaces
- Mechanical fixings



## FCS Series

### Folded Cover Strip

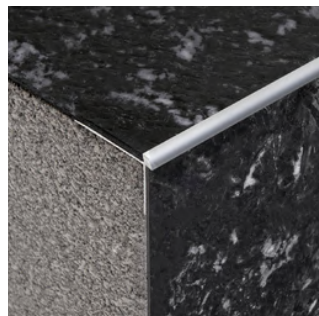
- Designed for smooth transition between different floor surfaces
- Pre-drilled and countersunk
- Supplied complete with fixings
- Available in different sizes



## IRF1180

### Ramp Frame for Surface Mounted Matting

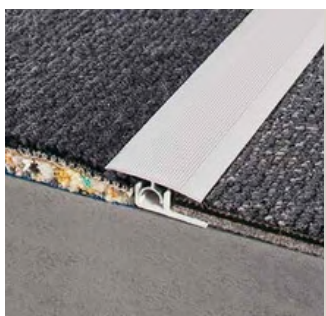
- Provides safe transition
- Used to create a defined mat well
- Ramped to reduce trip hazards
- CA290 adhesive



## ETV3

### Floor Trim

- Edge trim for vinyl flooring
- Provides a solid and clean finish at horizontal and vertical junctions
- CA290 adhesive



## TRP33H

### Two Part Trim with Aluminium Flat Top

- Continuously adaptable height and inclination
- High load capacity up to 1.5 tons
- Provides a safe transition
- Mechanical fixings



## ETC6

### Floor Trim

- Edge trim for vinyl flooring
- Provides a solid and clean finish at horizontal and vertical junctions
- CA290 adhesive



## TRP44R

### Two Part Trim with Aluminium Flat Top

- Continuously adaptable height and inclination
- High load capacity up to 1.5 tons
- Provides a safe transition
- Mechanical fixings





← Reception  
↗ Toilets



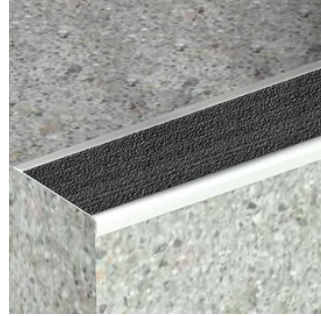
# Other Stair Nosing & Accessories



## A-137R

Aluminium Safety Stair Nosing With Self Adhesive Insert

- Requires CA290 adhesive
- Surface Mount
- Ramped back, long front



## A-138R

Aluminium Safety Stair Nosing With Self Adhesive Insert

- Requires CA290 adhesive
- Surface Mount
- Ramped back, short front



## CA290

Instant Grab Construction Adhesive

- Ready to go in 290ml cartridge
- Adhesion on almost all surfaces
- UV, water and weather resistant
- Good in -40°C to 100°C



## Stair Guard

PVC Stair Armour

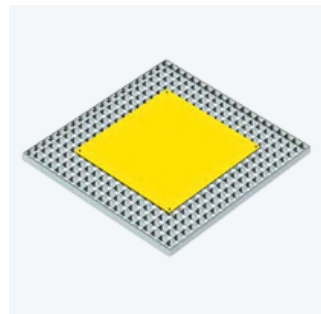
- Self adhesive
- Available in 76cm lengths
- Protects your stairs on active building sites
- Can be reused across multiple stairs and projects



## Slip Grip Disc

Slip Grip Discs

- High anti-slip rating
- Suitable for concrete and timber
- Perfectly for slip hazard areas
- Epoxy fitted



## GKB022

Anti-Slip Plate

- CA290 adhesive and mechanical fixings
- Rugged non-slip carborundum
- Available in a variety of sizes on request upto 1200 x 1200mm





# Other Products



## SKTSTPEDGE

### Skatestop Edge Skate Deterrent

- Easy rebated installation
- Excellent Durability
- Zero Maintenance



## SKTDTRNT

### Bullet Head Skate Deterrent

- Easy rebated installation
- Excellent Durability
- Zero Maintenance
- Install 500mm apart



## Wheel stops

### Recycled Rubber Wheel Stops

- Available in standard size and extra large
- Reduces damage
- Asphalt spikes or concrete fasteners included



## Tactile Tape

### Staymark 3M Tactile Tape

- Very easy installation
- 152mm wide tape
- Suitable for Concrete, Asphalt, Tile Stone and Pavers



## Threshold Ramps

### Aluminium Adjustable Threshold Ramps

- Available in eight different sizes to fit all surfaces
- Adjustable heights available from 25mm-152mm

## Did you know?

Our experienced team can provide the best advice on which tactile products are best suited for your project. Contact us today for more information.





