

HEKA HOODS®

BRACKET-LESS
AWNING SYSTEMS





INTRODUCING

HEKA HOODS BRACKET-LESS AWNING SYSTEMS

Create beautiful lines with Heka Hoods bracket-less awning systems.

Heka Hoods are an aluminium awning without brackets, providing minimalist styling with functional protection from the elements.

Our awning hoods can be used as a single piece over a window or door. Or wrap around a building's façade.

Easy installation

Heka Hoods arrive on site as a finished product, powder coated and ready for a quick and easy installation. There's no need for brackets, FC sheeting or painting.

Engineered

Our standard product is engineered to AS1170.2 Region B and is suitable for most sites Australia wide. We have a product engineered to Region C, suitable for high wind sites and sites in northern Australia.

Australian innovation

Heka Hoods is a patented Australian innovation. Invented, developed and made by Heka Hoods in Australia. We're the only suppliers and distributors of Heka Hoods.





71

—

FEATURES

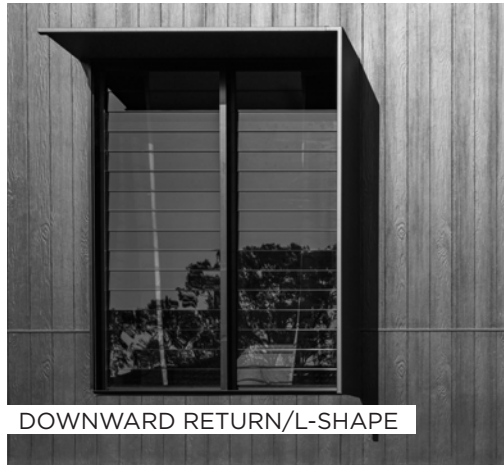
HEKA HOODS BRACKET-LESS AWNING SYSTEMS

Heka Hoods have been developed with aesthetics and functionality in mind and allow for a variety of design options to suit your projects needs.

Our unique joining system allows for continuous connection and the creation of almost any shape. Fully resolved junctions form a seamless finish.



STRAIGHT HOOD



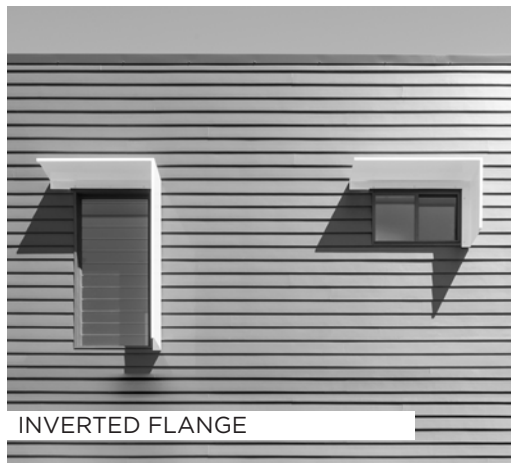
DOWNWARD RETURN/L-SHAPE



CORNERING



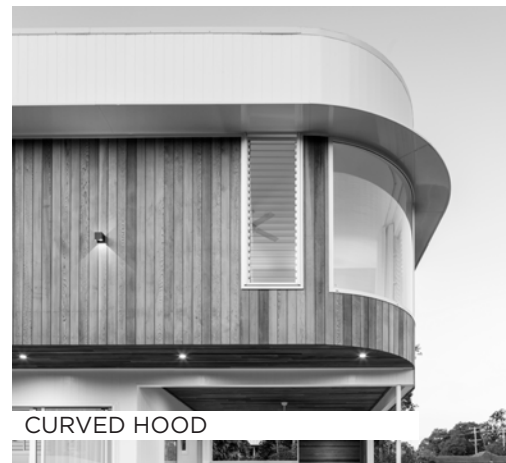
CONTINUOUS CONNECTION



INVERTED FLANGE



FULL SURROUND



CURVED HOOD



ANGLE CUT



SIZES

HEKA HOODS BRACKET-LESS AWNING SYSTEMS

STANDARD DEPTHS

Heka Hoods are available in five standard depths – 300mm, 450mm, 600mm, 750mm, 900mm, and 1200mm by application.

Lengths are customised to suit your specific job. Maximum span is 3000mm before a joiner is required.

CONNECTION SYSTEM

Our patented joining and connection system has been specially designed to enable continuous connection of the hoods. Variations of this connection detail allows for cornering and almost any directional change. With no screws or pop rivets required, the fine detail of the joining system further enhances the minimalist appearance of the awning hood system.

FINISH

At Heka Hoods we offer a full range of colour choices. Our preferred powder coat finish is Duratec. Other finishes are available on request.

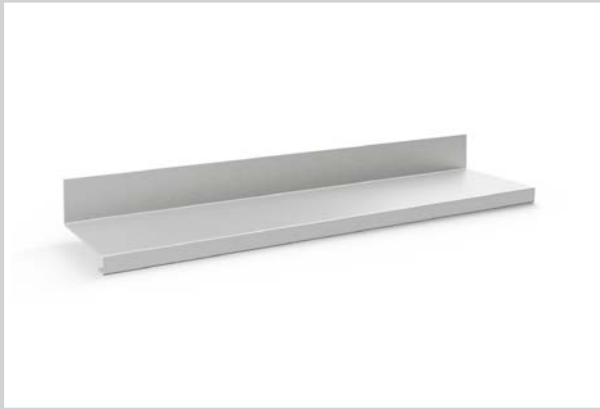


CORE SERIES

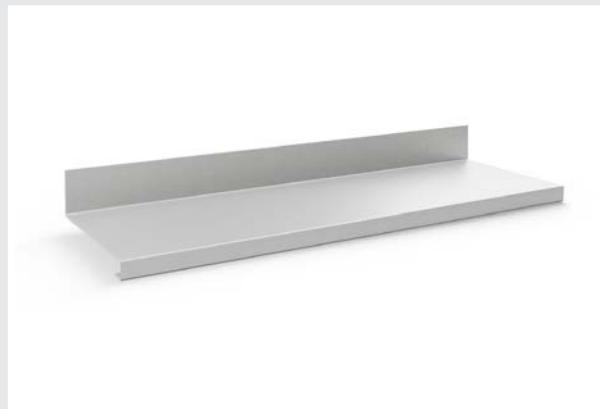
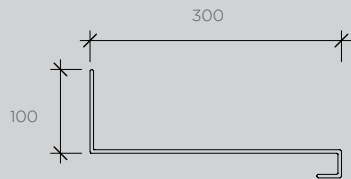
HEKA HOODS BRACKET-LESS AWNING SYSTEMS

Our Core Series hoods are available in three standard depths - 300mm, 450mm, and 600mm.

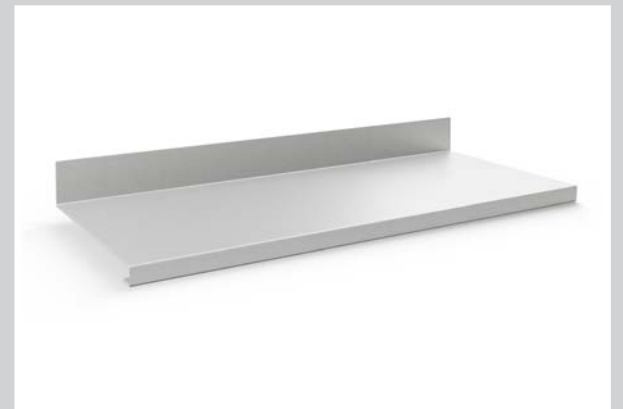
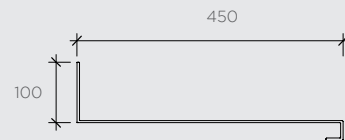
STANDARD DEPTHS



HH300MM DEEP
STANDARD



HH450MM DEEP
STANDARD



HH600MM DEEP
STANDARD



EXTEND SERIES

HEKA HOODS BRACKET-LESS AWNING SYSTEMS

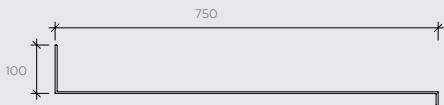
Our Extend Series hood are available in three standard depths - 750mm, 900mm, and 1200mm by application.

Please note that HH1200 hoods are only available in a very limited scope. Additional costs for custom engineering may apply.

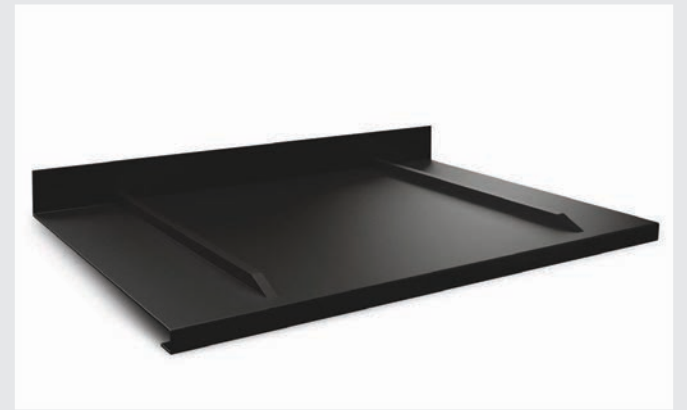
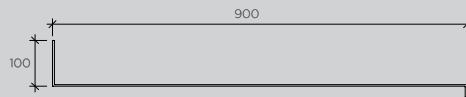
STANDARD DEPTHS



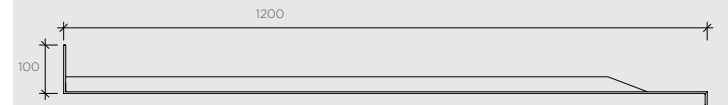
HH750MM DEEP
STANDARD



HH900MM DEEP
STANDARD



HH1200MM DEEP
STANDARD



HIGH WIND SERIES

HEKA HOODS BRACKET-LESS AWNING SYSTEMS

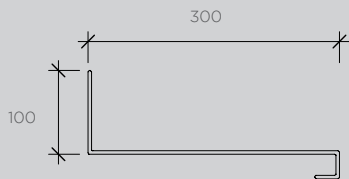
Our High Wind Series hoods are suitable for Region C sites and are available in three standard depths - 300mm, 450mm, and 600mm.

Additional information may be required to confirm suitability for your location.

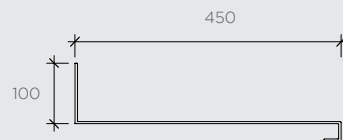
STANDARD DEPTHS



HH300MM DEEP
STANDARD



HH450MM DEEP
STANDARD



HH600MM DEEP
STANDARD





SUITABILITY

HEKA HOODS BRACKET-LESS AWNING SYSTEMS

Heka Hoods have undergone extensive testing and development and are designed in accordance with AS1170.2, Region A, B, and C (equivalent to AS4055 - N1, N2, N3, C1 & C2) up to 6.5 metres above ground when installed as per Heka Hoods installation guidelines.

The suitability of Heka Hoods at a specific location and project will be subject to the application, site specific wind classification, and availability of sufficient structural member(s) to attach the hood(s). It is the customers responsibility to provide project specific wind rating(s) and to ensure the structural integrity & suitability of the sub-structure for connection of the Heka Hoods has been reviewed and confirmed by the site engineer.

Heka Hoods are suitable, but not limited to, fixing back to:

- Timber
- Brick/blockwork
- Cold form steel framing
- Structural steel
- Tilt panel
- Concrete construction

For specific fixing information and for applications outside of the above please contact us to discuss options and solutions that may be available for your project.

TERMS OF USE: This information published as a guide only. You should obtain architectural, engineering or other technical advice to assess the requirements for your project. Heka Hoods accepts no liability in respect to the use of this information. Heka Hoods are not a replacement for your window flashing and not to be used as a waterproofing system.

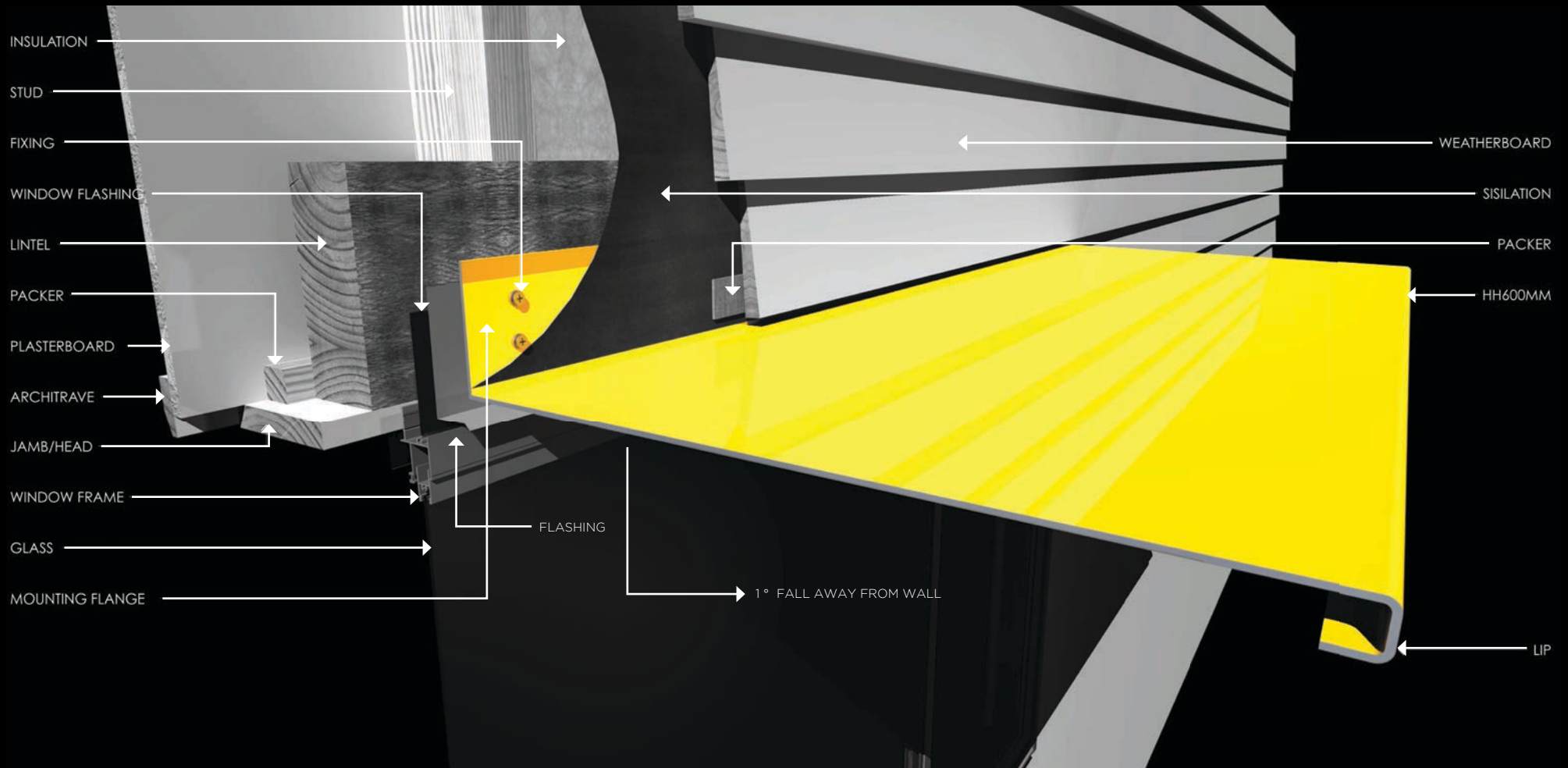


DETAILING

HEKA HOODS BRACKET-LESS AWNING SYSTEMS

Heka Hoods can be installed pre-cladding or retro-fitted.

HH600 HEKA HOOD INSTALLED PRE-CLADDING

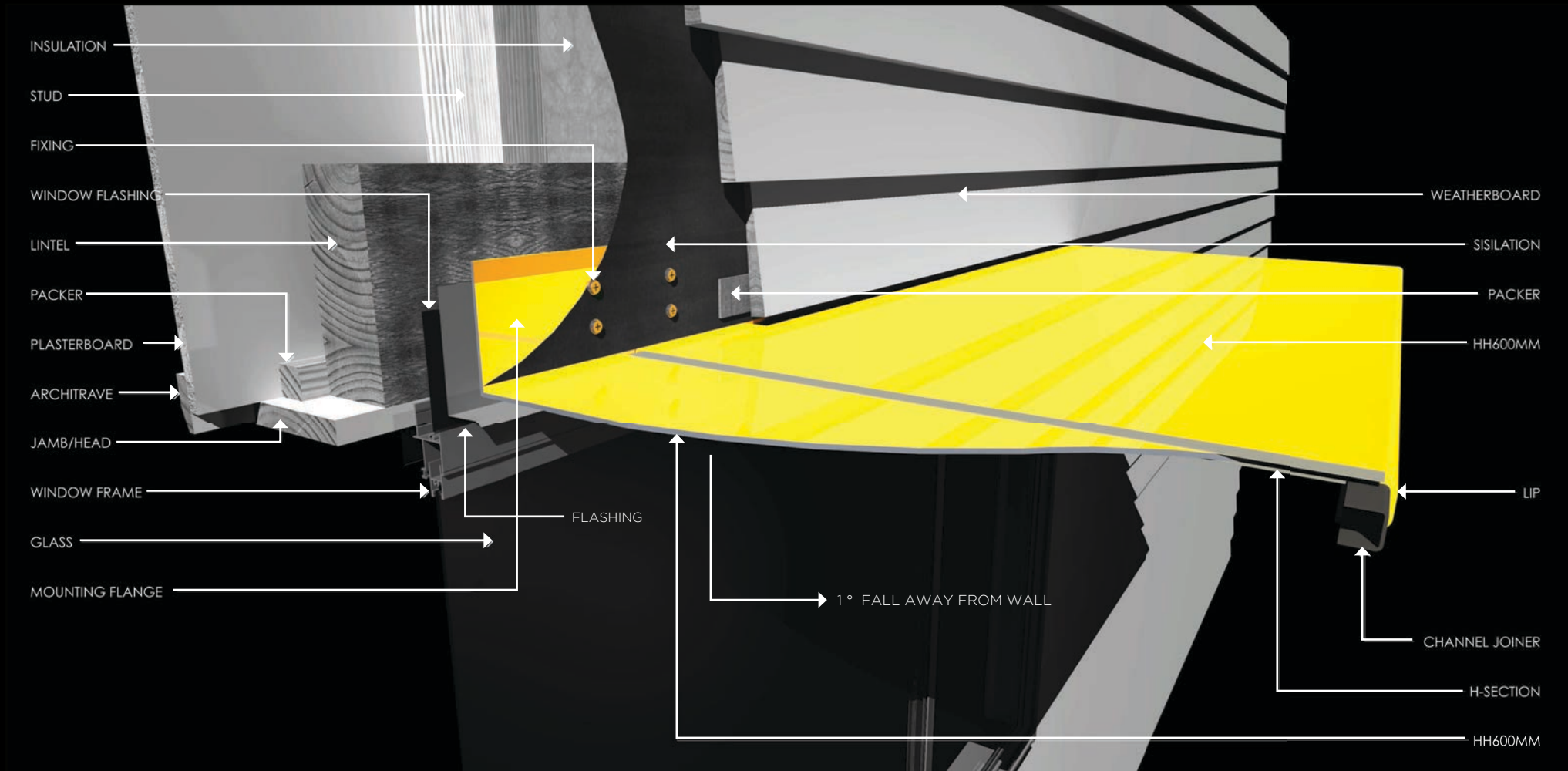


TERMS OF USE: These drawings are published as an information guide only. You should obtain architectural, engineering or other technical advice to assess the suitability of these drawings to the requirements of your particular project. Heka Hoods accepts no liability in respect to the use of these drawings. Heka Hoods are not a replacement for your window flashing and not to be used as a waterproofing system.

DETAILING

HEKA HOODS BRACKET-LESS AWNING SYSTEMS

HH600 HEKA HOOD WITH HIGHLIGHTED JOINER AND H-SECTION

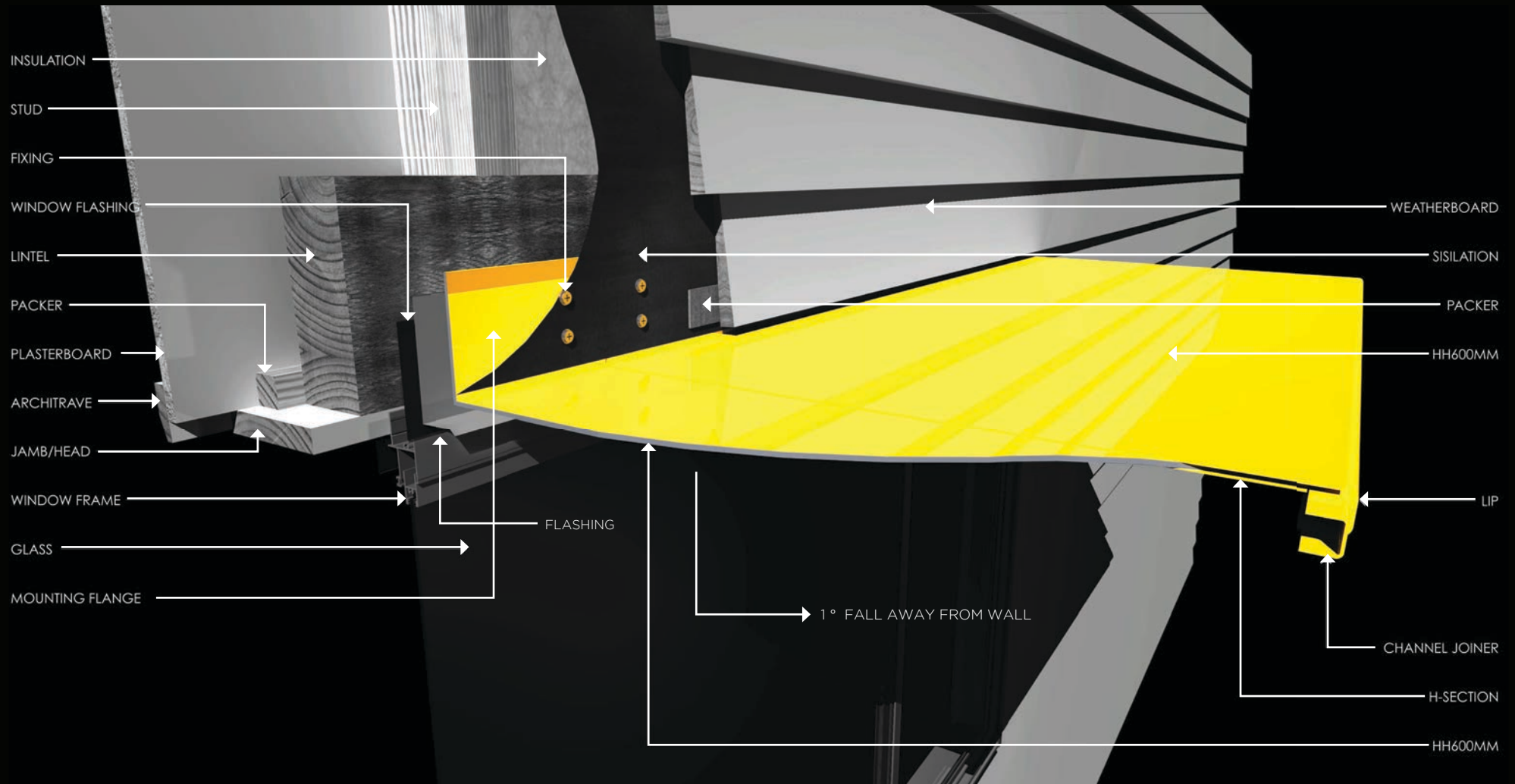


TERMS OF USE: These drawings are published as an information guide only. You should obtain architectural, engineering or other technical advice to assess the suitability of these drawings to the requirements of your particular project. Heka Hoods accepts no liability in respect to the use of these drawings. Heka Hoods are not a replacement for your window flashing and not to be used as a waterproofing system.

DETAILING

HEKA HOODS BRACKET-LESS AWNING SYSTEMS

HH600 HEKA HOOD WITH COLOUR MATCHED JOINER AND H-SECTION

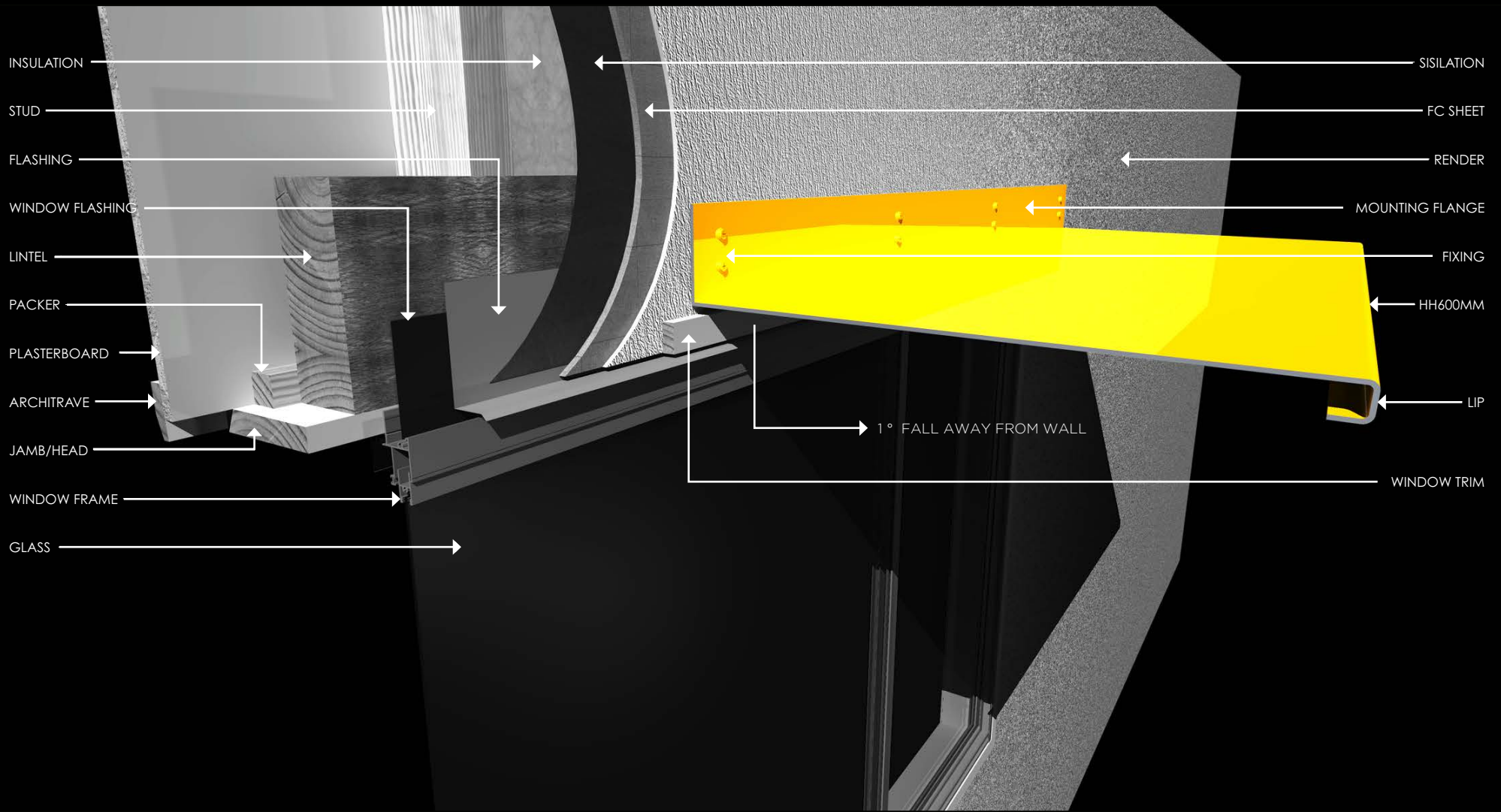


TERMS OF USE: These drawings are published as an information guide only. You should obtain architectural, engineering or other technical advice to assess the suitability of these drawings to the requirements of your particular project. Heka Hoods accepts no liability in respect to the use of these drawings. Heka Hoods are not a replacement for your window flashing and not to be used as a waterproofing system.

DETAILING

HEKA HOODS BRACKET-LESS AWNING SYSTEMS

HH600 HEKA HOOD RETROFITTED ONTO RENDER



TERMS OF USE: These drawings are published as an information guide only. You should obtain architectural, engineering or other technical advice to assess the suitability of these drawings to the requirements of your particular project. Heka Hoods accepts no liability in respect to the use of these drawings. Heka Hoods are not a replacement for your window flashing and not to be used as a waterproofing system.

BENEFITS

HEKA HOODS BRACKET-LESS AWNING SYSTEMS

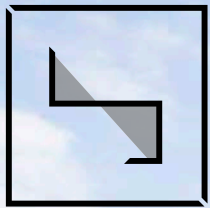
There are many good reasons to use Heka Hoods Bracket-less awning system:

- Easy to install with no need for brackets
- Arrives as a finished product and eliminates the need for multiple trades when making and installing awnings
- Offers versatility and is both aesthetically pleasing and functional
- Customised lengths and depths to suit specifications
- Engineered with a wind load rating
- Competitively priced with fast lead times
- Non-combustible
- Australian designed and manufactured
- Cranes are not required for installation, thanks to our modular system.

Schedule us into your next suitable project.







HEKA HOODS®



HHBRO.VII.2022