



## *Innovation meets Design*

It took a team of three from Iconic Construction 99 days to build this bespoke Kiwi home.

Explore New Zealand's first 3D-printed show home, a revolutionary project that redefines residential construction. Located in the vibrant Rotokauri subdivision of Brymer Heights, Hamilton, this architectural marvel seamlessly blends cutting-edge innovation with sustainable design.

**Floor Area:** 167m<sup>2</sup>

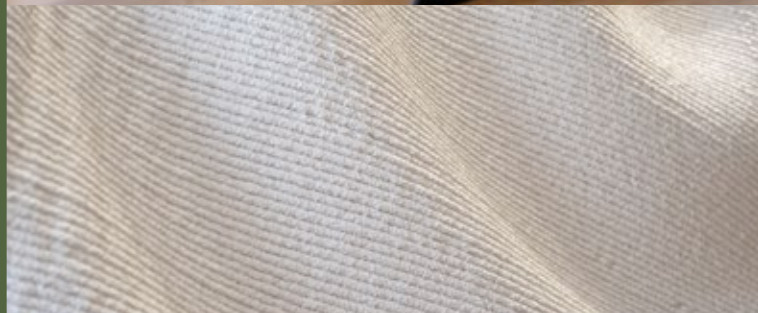
**Walls:** 36 unique 3D printed QOROX walls, six lintels totalling 217m<sup>2</sup>

**Print Time:** 24 hours total

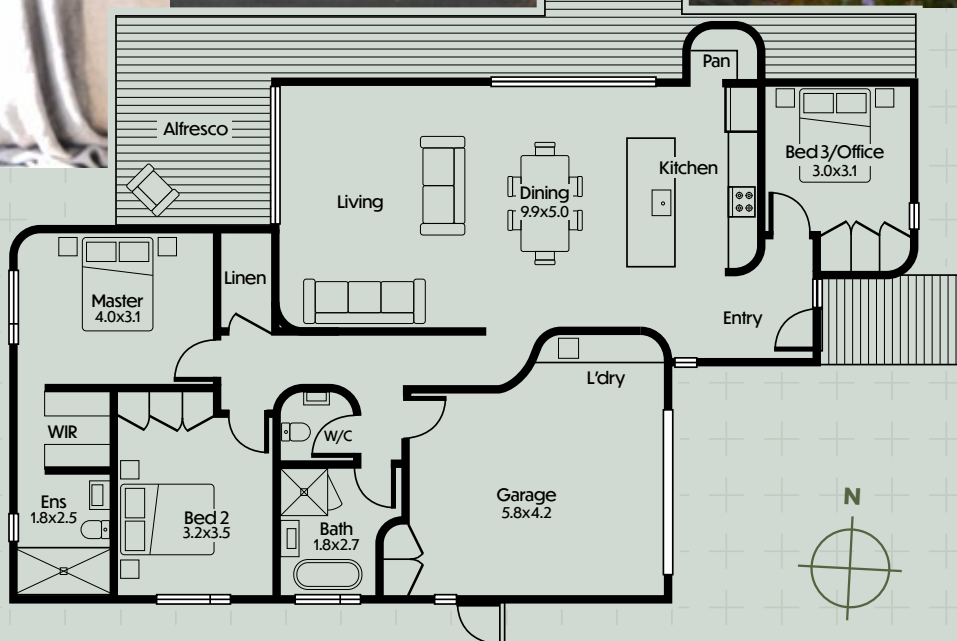
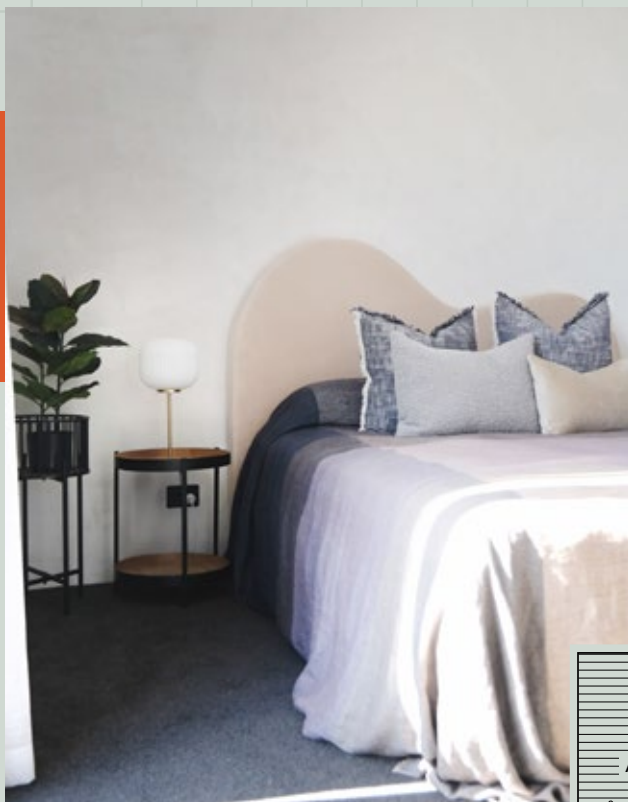
**Timber Cladding:** Abodo weather boards





**Roof:** COLORSTEEL - profiled metal roofing

**Windows and Doors:** Solux-E Glass and thermal residential suite aluminium



**ICONIC** 3D  
PRINTED CONSTRUCTION



-  **3 bedroom**
-  **2 bathroom**
-  **1 living**
-  **1 garage**

This groundbreaking build showcases the advantages of 3D concrete printing – reduced waste, enhanced thermal performance, seismic resilience, and unmatched efficiency. Completed in 99 days, the home demonstrates how advanced construction methods can deliver both speed and sustainability without compromising on style or comfort.

And with an expected lifespan of two centuries, an Iconic3D home is truly a home built to last.

The interior of an Iconic3D home features the amenities you expect in a modern home: a full, highly-specced kitchen, built-in wardrobes, master bathroom, and more, all wrapped in a thoughtful layout built to live in.

And the best part of building with this technology? It's entirely customisable. Build the home of your dreams just the way you want it.


**ICONIC3D**  
PRINTED CONSTRUCTION

### Get in touch

Ready to get started? We're building homes in Auckland, Waikato and the Bay of Plenty, Canterbury and Central Otago.

Visit our show home and fall in love with your next home. Private appointments available upon request.

 **1 City View Terrace, Hamilton**

 **Open Monday – Friday**  
**10:00am – 2:00pm**

 **021 198 6875**

