



NEOLITH
touch.feel.live

KITCHEN & BATHROOM

www.neolith.com

The best thing about creating something, is living it.

At Neolith, our aim is to make the world a better place by offering innovative solutions to design challenges. We strive to achieve our best potential so that we can provide people with the tools they need to improve their lives. We believe that the best thing about creating something, is living it, and this is reflected in everything we do.

Neolith sintered stone is an architectural surface that is made entirely from natural raw materials such as clays, feldspar, natural mineral oxides, and even recycled materials, up to 90%. Unlike other surfaces that use resins, our product is bonded using heat, resulting in minimal silica content, making it safer for the entire production and fabrication process*.

Our sintered stone surfaces have exceptional durability, withstanding high temperatures, scratches, stains, and UV radiation, all while requiring minimal maintenance for years of brilliant performance. Furthermore, because of its natural composition, it does not emit toxic fumes when exposed to fire or high temperatures, making it safer for both the environment and the occupants of your home.

By choosing Neolith, you are making a sustainable choice that is kinder to the earth and the people who inhabit it.

NEOLITH
touch.feel.live

*90R refers to a select range of colours that are composed of 90% recycled minerals. Neolith recommends all fabricators follow Neolith's fabrication guidelines, including the use of waterjets and face masks.



Neolith AU
Sample: Colorado Dunes Ultrasoft 12mm
Designed by: Neolith AU



*Private Residence, Queensland (Australia)
Backsplash: Himalaya Crystal
Countertop: Strata Argentum
Designed by: Design Duo
Image: Joel Noon*





Private Residence, New Zealand
Back-splash: Calacatta
Designed by: Matt South Designer

Product functionality

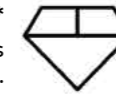
NON POROUS
Waterproof and resistant to liquids, with an absorption level of almost zero.



LIGHTWEIGHT
Lighter than many cladding or interior surfaces, Neolith can be produced in varying degrees of thickness, including an ultra-thin 3 mm depth. At 6 mm it's used on skyscrapers, at 20 mm it becomes an attractive kitchen island.



RESISTANT TO SCRATCHES*
Its hard surface makes it resistant to scratches and abrasion.



RECYCLABLE
Up to 90% of recycled material in every slab. 100% recyclable. Two models with the new 90R technology by Neolith available now.



RESISTANT TO HIGH TEMPERATURES
It does not burn in contact with fire neither emits smoke or toxic substances when subjected to high temperatures.



RESISTANT TO BENDING
It has a high shear rate, making it resistant to heavy loads and pressure.



EASY TO CLEAN
Resistant to any kind of chemical cleaning agent such as bleach or ammonia.



ULTRA HYGIENIC
Neolith's special composition makes it impervious to most chemical products, and can be disinfected with a wide range of powerful cleaning products.



SAFE FOR CONTACT WITH FOOD
It does not release any harmful substances and is totally suitable for contact with food. NSF-Certified.



RESISTANT TO UV RAYS
Being 100% natural, its colors do not fade away when exposed to sunlight or other extreme weather conditions.



100% NATURAL
It does not release any substances that are harmful to the environment.



* Please, go to www.neolith.com for use recommendation.

Neolith, a Carbon Neutral Company

Founded in 2009, Neolith, the market-leading brand of Sintered Stone is a revolutionary product which has become a material of choice for architects, designers, specifiers and fabricators.

This pioneering material can be specified for the most demanding interior and exterior building projects. Combining high-definition detailed decoration with high-performance qualities, Neolith offers the triple reassurance of strength, beauty and longevity.

WHAT IS A SINTERED STONE?

Sintered Stone is a 100% natural material based on granite minerals, glass minerals and natural oxides:

1. Granite Materials: such as feldspar, giving hardness and strength to the surface.
2. Glass minerals, which ensures chemical stability.
3. Natural oxides, which deliver chromatic properties.

HOW IS SINTERED STONE PRODUCED?

Neolith is produced using the very latest in sintering technology, replicating the thousands of years' process by which natural stone is formed in a matter of hours.

The raw materials which form the slab are first subjected to extremely high pressure, going through a pressing machine where a weight of 400 bars is applied. In the second phase of the process, the slab goes through a kiln where temperatures reach more than 1200°C (2200°F).

This process of ultra-compaction creates full-body surfaces with unique technical features.

Performance: Tried, tested and trusted, Neolith's combination of realism, high performance and versatile formats make it a go-to material for architects, designers, specifiers and fabricators.

Applications: Neolith is the optimum surfacing material for both indoor and outdoor applications. From a skyscraper façade to a kitchen worktop, Neolith's physical and mechanical characteristics deliver ultimate performance, unmatched beauty and long-term value.

Neolith represents 13 years of selecting the very best materials, processes and people. It has been an exciting journey in which we have founded a brand which continually pushes the boundaries and highlights the potential of Sintered Stone.

Neolith bases its business practices on sustainability and environmental respect.

All these measures directly meet GHG's reduction objectives, which include: direct emissions company activity (e.g. natural gas, gasoil used in forklifts, cars in property), emissions from electricity used and other indirect emissions, generated from other day to day company activity.

OUR COMMITMENT AND RESULTS IN 2019

90% of all waste generated is recycled.

UP TO 90% of the weight of each slab comes from recycled materials.

7.690 tons of CO2 are no longer being released.

↓ 40% of our consumption of forklift truck diesel fuel.

↓ 20% of hazardous waste generated.

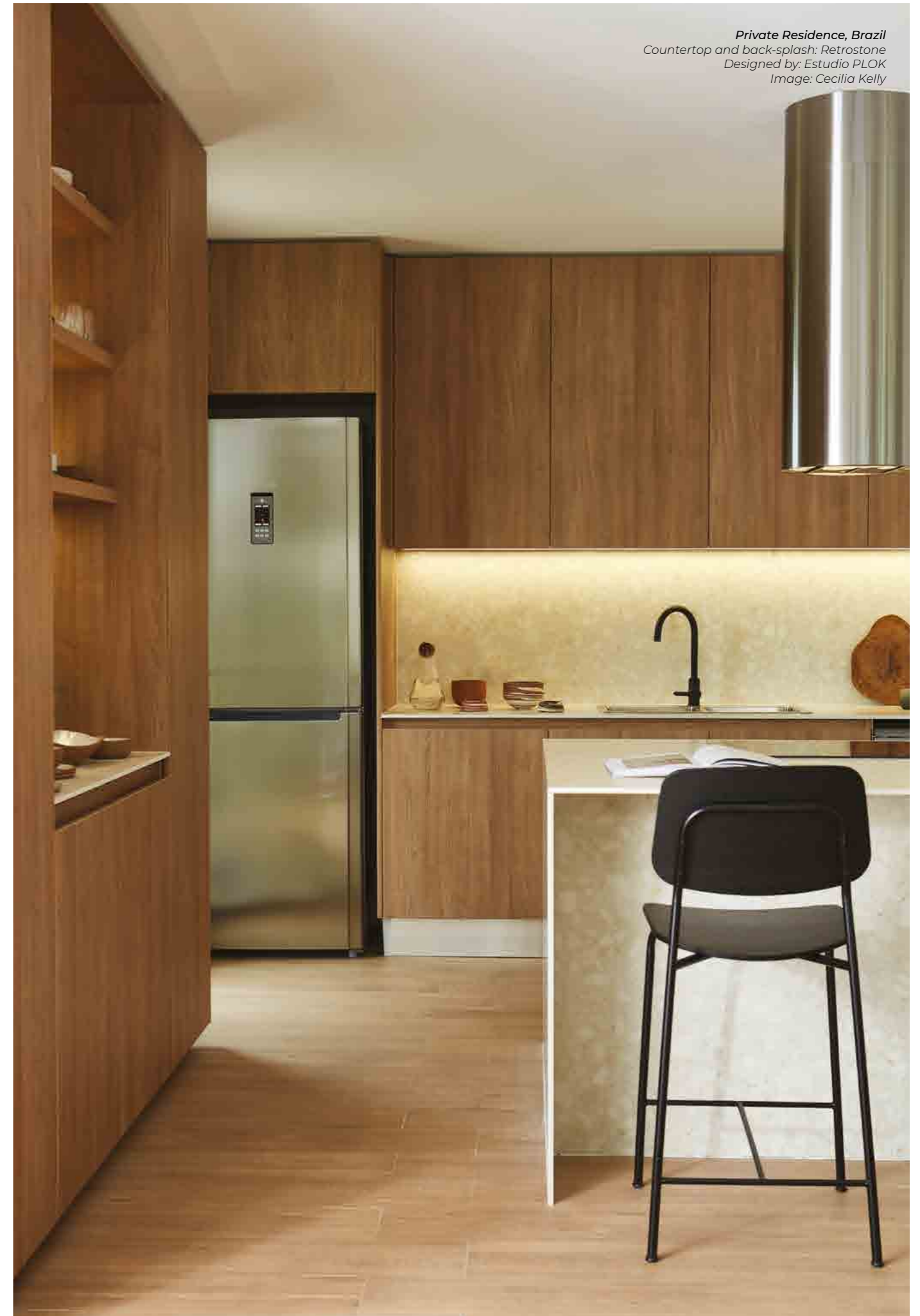
To attain the highly-prized carbon neutral status Neolith followed the internationally recognized Greenhouse Gas Protocol (GHG) and implemented a dynamic, innovation-led sustainability strategy coupled with tactical, high value carbonoff-setting.

On the other hand, 90% of the waste generated by Neolith is recycled and given a second life either with company operations or through authorized 3rd party players which goes to prove the brand's solid commitment to a circular economy.

Neolith surfaces also embody these principles, with up to 90% of the weight of each slab produced from recycled material.

A policy has also been implemented to reduce the quantity of disposable plastic which is a small measure yet leads to major progress in reaching carbon neutrality.

Private Residence, Brazil
Countertop and back-splash: Retrostone
Designed by: Estudio PLOK
Image: Cecilia Kelly





Wall cladding: Arabesque
Designed by: Neolith
Image: Neolith SA

Finishes and 25-year warranty

Neolith is available in different finishes that are giving richness and value to the designs created with those surfaces: from rough textures with relief up to shiny polished with linear reflections. All a repertoire to stimulate the sight and touch.

Neolith Group offers a 25-year warranty on its Neolith slabs with a thickness of 6+3, 12 and 20mm used to manufacture countertops. Please register your warranty at www.neolith.com.

In order to exercise this warranty, you must contact the retail establishment where you purchased your countertop so they may provide you with the data and information needed to register the warranty (shop data, batch number, etc.).



SATIN

Completely matte finish. Highly resistant and ideal for commercial applications.



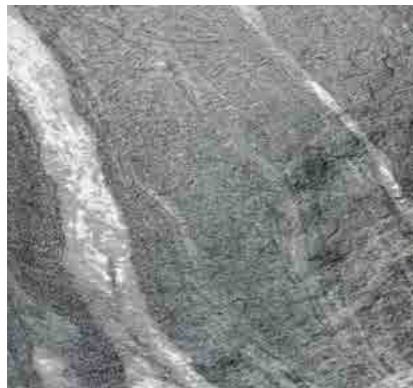
SILK

Matte finish with a thin layer of glaze that provides a subtle shine and a nice soft touch. Surface finish that is extremely easy to clean.



DÉCOR POLISHED

The Décor Polished confers a perfect linear reflection to the colours of the Classtone Collection which gains in depth and elegance.*



SLATE

Available now in the Mar del Plata, Layla, Amazonico, Shilin and Wulong, Slate finish creates the delusion of stratum on the surface.



RIVERWASHED

Finish with a rough texture and relief that evokes sensations to the touch.



ULTRASOFT

Texture with a greater degree of softness and depth than Natural Honed.*

Formats, Applications & Thicknesses



APPLICATIONS	3,600 x 1,200 mm 142" x 48"	3,200 x 1,500 mm 126" x 60"	3,200 x 1,600 mm 126" x 64"	2,600 x 1,200 mm 102" x 48"	2,600 x 1,500 mm* 102" x 60"
Interior walls	3+ · 6 · 6+	6 · 6+	12 · 20	3+ · 6 · 6+	3+ · 6 · 6+
Interior floors	6 · 6+	6 · 6+	12 · 20	6 · 6+	6 · 6+
Exterior walls	3+ · 6 · 6+	6 · 6+	12 · 20	3+ · 6 · 6+	3+ · 6 · 6+
Exterior floors	6 · 6+	6 · 6+	12 · 20	6 · 6+	6 · 6+
Ventilated façade with exposed fixing system	6+	6+	12	6+	6+
Ventilated façade with hidden fixing system	6+	6+	12	6+	6+
Worktops			12 · 20		
Heavy transit floors	6+	6+	12 · 20	6+	6+
Interior cladding over existing walls	3+ · 6 · 6+	6 · 6+		3+ · 6 · 6+	3+ · 6 · 6+
Interior flooring over existing floors	6 · 6+	6 · 6+		6 · 6+	6 · 6+
Furniture	3 · 3+ · 6 · 6+	6 · 6+	12 · 20	3+ · 6 · 6+	3+ · 6 · 6+

+ Slab reinforced with fiber glass.

● Recommended thicknesses

* This format is only available for projects, not in permanent stock.

Cut to size formats also available for projects. Dimensions in inches are Nominal inches.

* Check use recommendations.



Private Residence, Australia
Countertop and flooring: Beton
Designed by: Studio Griffiths
Image: Shayrn Cairns



*Private Residence, Wellington (New Zealand)
Backsplash and island: Calacatta Luxe
Designed by: Rebecca Bailey Design
Image: Kate Burton Brown*



Green fact sheet

Neolith's high-performance Sintered Stone for kitchen and bathroom countertops, flooring, interior wall, facades and cladding applications comes with an assortment of green benefits.

Neolith has a variety of qualities that make it ideal for the environmentally-conscious professional.

PRODUCT COMPOSITION



100% Natural: Made of clays, feldspar, silica and natural mineral oxides, Neolith will not emit toxic fumes into the environment when exposed to fire or extremely high temperatures.



100% Recyclable: Due to its natural composition, Neolith can be recycled and reduced to its aggregates. Between 52 and 90% recycled content: Up to 52% of any Neolith slab is composed of recycled raw materials and some colour include 90%.



Near-Zero Porosity: With a porosity of less than 0.08 percent, Neolith is impervious to absorption, making it a hygienic product resistant to bacteria that can cause disease and trigger allergies.



New Formulation 90R by Neolith: The ESSENTIALS series includes up to 90% recycled material in the composition of the Metropolitan and Sofia Cuprum 2021 models.

CERTIFICATIONS AND MEMBERSHIPS



Greenguard Certification (formerly GREENGUARD Indoor Air Quality Certification): Certifies that Neolith meets strict chemical emissions limits, contributing to a healthier interior.



Greenguard Gold Certification (formerly known as GREENGUARD Children & Schools Certification): Certifies that Neolith is safe indoors for sensitive individuals (such as children and the elderly) and ensures that the product is acceptable for use in environments such as schools and healthcare facilities.



CE Certification (European Commission): Confirms that Neolith meets European safety, health and environmental protection requirements.



LEED Points Earner: LEED, Leadership in Energy and Environmental Design, is a program that provides third-party verification of green buildings. Neolith satisfies safety prerequisites and earns points to help consumers achieve the desired level of certification for their home or commercial project.



Member of the U.S. Green Building Council

(USGBC): The USGBC, the council that oversees LEED, allows advocates for green-building policies and practices to come together.



Neolith has got the NSF Certification making sure that the product meets strict standards for public health protection, being totally suitable for contact with food.

Neolith's unique sintering process and proprietary design also provide additional green benefits.

ADDITIONAL GREEN BENEFITS

Fewer raw materials, less erosion: Neolith's thin slabs use fewer raw materials, resulting in less soil erosion, without sacrificing any strength.

CO2 Emissions Reduction: A thinner slab means a lighter slab. With Neolith, it's possible to transport more than double the amount of surface per container than with thicker products like marble, granite or quartz. The lighter weight allows for a more fuel efficient journey and considerable reductions in CO2 emissions.

Water-based decoration: Neolith uses the ultimate water-based decoration technology in its production, which, compared to the solvent-based decoration commonly used in industry, have a much lower environmental impact.

No gut remodels: Neolith's slim surface can be applied directly onto existing surfaces, saving remodelers from costly tear-outs while reducing landfill waste. No landfill waste means no waste transportation needed, further reducing net CO2 emissions.

Optimized energy consumption: Neolith's resistance to extremely high and low temperatures makes it ideal for ventilated façades. The thermal insulation and ventilation between the Neolith façade and the building itself optimizes the building's energy consumption considerably (up to 40 %).

25 years—warranty: Neolith countertops come with a manufacturer's guarantee of 25 years and do not need frequent replacement or maintenance treatments like other surfaces materials.

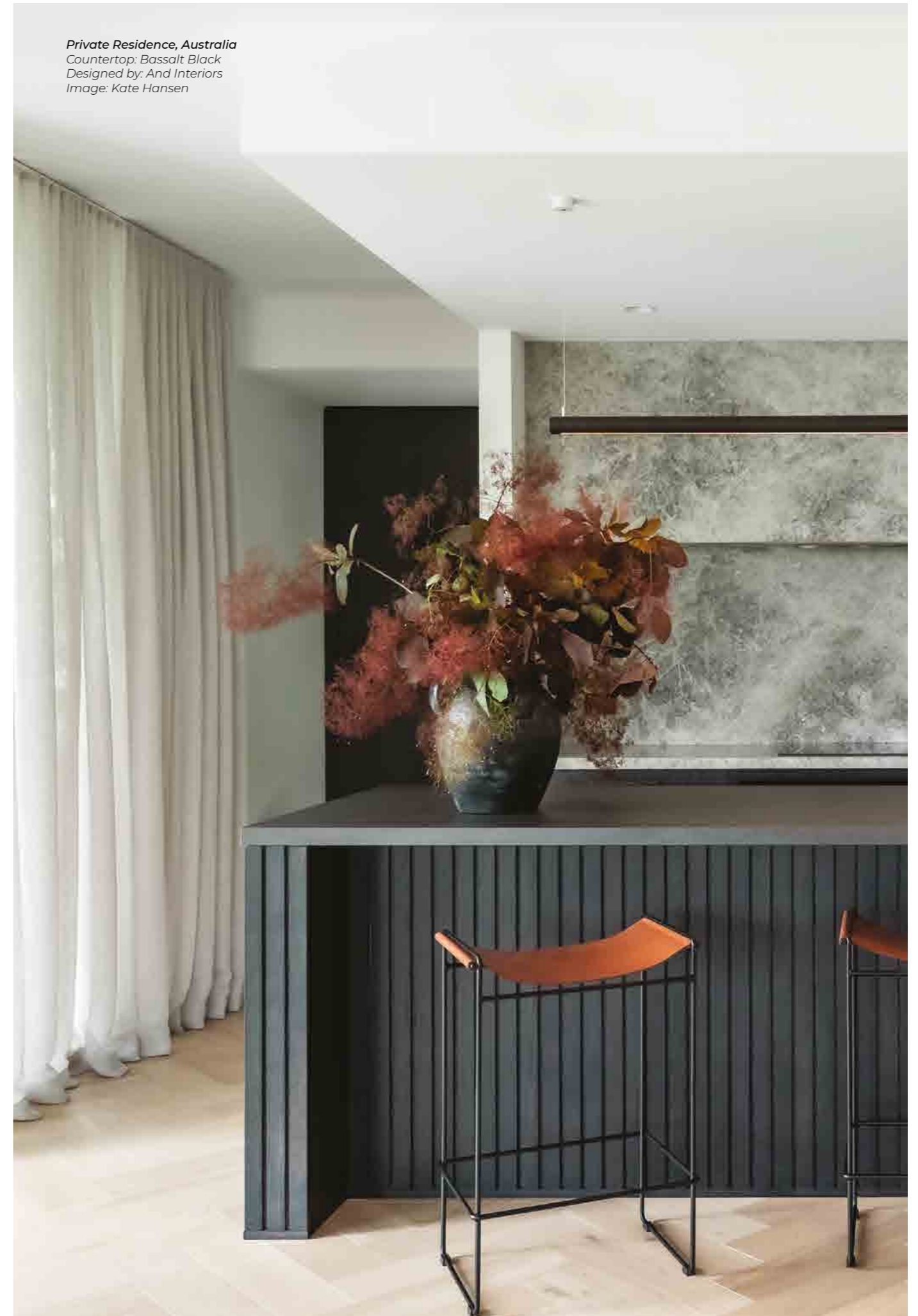
Neolith gives designers, architects and other industry professionals confidence that their aesthetically-appealing design decisions are equally appealing to the environment.

Private Residence, Australia

Countertop: Bassalt Black

Designed by: And Interiors

Image: Kate Hansen





Springs Home, Australia
Countertop and splash-back: Just white
Designed by: Concepts by Gaving Hepper

Neolith Gallery

The Neolith collection is composed of over 60 different colours that are grouped in 6 collections.

Most of those 60 colours are available in more than one finish and thicknesses and even some of them have Bookmatch and Endmatch options.

Australia is proud to locally stock over 40 colours in a variety of different finishes and thickness. The local portfolio is shown on the following gallery pages.

For the full global portfolio you can scan the below QR code. Note global stock can incur longer lead times. Check with your local centre for more information.



ARCTIC WHITE						
	mm	Satin	Silk	Pol.	U.Soft	Riv/Slate
2600 x 1200	6					
3600 x 1200	3*		•			
	6					
3200 x 1500	6		•			
3200 x 1600	12		•			
	20		•			



ESTUARIO E01						
	mm	Satin	Silk	Pol.	U.Soft	Riv/Slate
2600 x 1200	6					
3600 x 1200	3*		•			
	6					
3200 x 1500	6		•	•		
3200 x 1600	12		•	•		
	20		•	•		



ESTUARIO E01-R						
	mm	Satin	Silk	Pol.	U.Soft	Riv/Slate
2600 x 1200	6					
3600 x 1200	3*		•			
	6					
3200 x 1500	6		•	•		
3200 x 1600	12		•	•		
	20		•	•		



ESTUARIO E05*						
	mm	Satin	Silk	Pol.	U.Soft	Riv/Slate
2600 x 1200	6					
3600 x 1200	3*				•	
	6					
3200 x 1500	6				•	
3200 x 1600	12				•	
	20				•	



ESTUARIO E05-R*						
	mm	Satin	Silk	Pol.	U.Soft	Riv/Slate
2600 x 1200	6					
3600 x 1200	3*				•	
	6					
3200 x 1500	6				•	
3200 x 1600	12				•	
	20				•	

• Available by special request.
Colours may vary in colour, tone and pattern.



Scan to view Neolith global catalogues and colour portfolio.

*While stocks last. Please check availability of this colour with your local centre.



G3

CALACATTA C01

	mm	Satin	Silk	Pol.	U.Soft	Riv/Slate
2600 x 1200	6					
3600 x 1200	3*		•			
3600 x 1200	6					
3200 x 1500	6		•			
3200 x 1600	12		•			
3200 x 1600	20		•			



G5

CALACATTA GOLD CG01

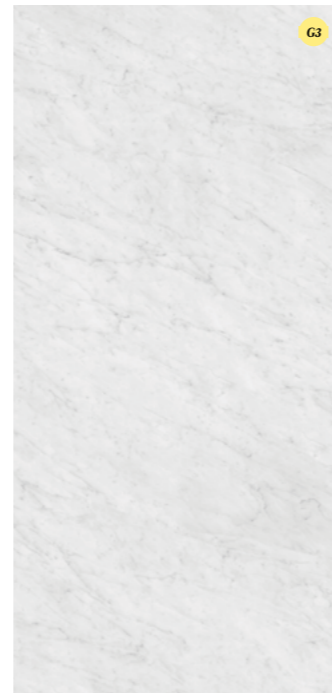
	mm	Satin	Silk	Pol.	U.Soft	Riv/Slate
2600 x 1200	6					
3600 x 1200	3*		•		•	
3600 x 1200	6					
3200 x 1500	6		•		•	
3200 x 1600	12		•		•	
3200 x 1600	20		•		•	



G5

MONT BLANC

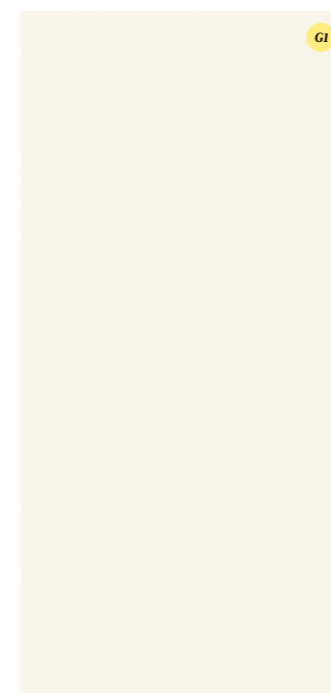
	mm	Satin	Silk	Pol.	U.Soft	Riv/Slate
2600 x 1200	6					
3600 x 1200	3*		•			
3600 x 1200	6					
3200 x 1500	6		•			
3200 x 1600	12		•			
3200 x 1600	20		•			



G3

BLANCO CARRARA BC2

	mm	Satin	Silk	Pol.	U.Soft	Riv/Slate
2600 x 1200	6					
3600 x 1200	3*		•			
3600 x 1200	6					
3200 x 1500	6		•			
3200 x 1600	12		•			
3200 x 1600	20		•			



G1

JUST WHITE

	mm	Satin	Silk	Pol.	U.Soft	Riv/Slate
2600 x 1200	6					
3600 x 1200	3*		•			
3600 x 1200	6					
3200 x 1500	6		•			
3200 x 1600	12		•			
3200 x 1600	20		•			



G4

STRATA ARGENTUM

	mm	Satin	Silk	Pol.	U.Soft	Riv/Slate
2600 x 1200	6					
3600 x 1200	3*				•	
3600 x 1200	6					
3200 x 1500	6				•	
3200 x 1600	12				•	
3200 x 1600	20				•	



G2

SHILIN

	mm	Satin	Silk	Pol.	U.Soft	Riv/Slate
2600 x 1200	6					
3600 x 1200	3*					
3600 x 1200	6					
3200 x 1500	6				•	
3200 x 1600	12				•	
3200 x 1600	20				•	



G1

RETROSTONE

	mm	Satin	Silk	Pol.	U.Soft	Riv/Slate
2600 x 1200	6					
3600 x 1200	3*					
3600 x 1200	6					
3200 x 1500	6		•			
3200 x 1600	12		•			
3200 x 1600	20		•			



G5

CALACATTA LUXE CL01

	mm	Satin	Silk	Pol.	U.Soft	Riv/Slate
2600 x 1200	6					
3600 x 1200	3*					
3600 x 1200	6					
3200 x 1500	6			•	•	
3200 x 1600	12			•	•	
3200 x 1600	20			•	•	



G5

CALACATTA LUXE CL01-R

	mm	Satin	Silk	Pol.	U.Soft	Riv/Slate
2600 x 1200	6					
3600 x 1200	3*					
3600 x 1200	6					
3200 x 1500	6			•	•	
3200 x 1600	12			•	•	
3200 x 1600	20			•	•	



G5

HIMALAYA CRYSTAL

	mm	Satin	Silk	Pol.	U.Soft	Riv/Slate
2600 x 1200	6					
3600 x 1200	3*					
3600 x 1200	6					
3200 x 1500	6			•	•	
3200 x 1600	12			•	•	
3200 x 1600	20			•	•	



G5

ABU DHABI WHITE

	mm	Satin	Silk	Pol.	U.Soft	Riv/Slate
2600 x 1200	6					
3600 x 1200	3*					
3600 x 1200	6					
3200 x 1500	6			•		
3200 x 1600	12			•		
3200 x 1600	20			•		



G2

WULONG

	mm	Satin	Silk	Pol.	U.Soft	Riv/Slate
2600 x 1200	6					
3600 x 1200	3*					
3600 x 1200	6					
3200 x 1500	6				•	
3200 x 1600	12				•	
3200 x 1600	20				•	



G1

CEMENT

	mm	Satin	Silk	Pol.	U.Soft	Riv/Slate
2600 x 1200	6					
3600 x 1200	3*					
3600 x 1200	6					
3200 x 1500	6				•	
3200 x 1600	12				•	
3200 x 1600	20				•	



NEW

G5

CALISTA

	mm	Satin	Silk	Pol.	U.Soft	Riv/Slate
2600 x 1200	6					
3600 x 1200	3*					
3600 x 1200	6					
3200 x 1500	6				•	
3200 x 1600	12				•	
3200 x 1600	20				•	

• Available by special request. Colours may vary in colour, tone and pattern.

NEOL EAT TECHNOLOGY



ALEXANDRA AX01

	mm	Satin	Silk	Pol.	U.Soft	Riv/Slate
2600 x 1200	6					
3600 x 1200	3*					
3600 x 1200	6					
3200 x 1500	6				•	
3200 x 1600	12				•	
3200 x 1600	20				•	



ALEXANDRA AX01R

	mm	Satin	Silk	Pol.	U.Soft	Riv/Slate
2600 x 1200	6					
3600 x 1200	3*					
3600 x 1200	6					
3200 x 1500	6				•	
3200 x 1600	12				•	
3200 x 1600	20				•	



ARABESQUE AR01

	mm	Satin	Silk	Pol.	U.Soft	Riv/Slate
2600 x 1200	6					
3600 x 1200	3*					
3600 x 1200	6					
3200 x 1500	6				•	
3200 x 1600	12				•	
3200 x 1600	20				•	



ARABESQUE AR01R

	mm	Satin	Silk	Pol.	U.Soft	Riv/Slate
2600 x 1200	6					
3600 x 1200	3*					
3600 x 1200	6					
3200 x 1500	6				•	
3200 x 1600	12				•	
3200 x 1600	20				•	



NEW YORK-NEW YORK

	mm	Satin	Silk	Pol.	U.Soft	Riv/Slate
2600 x 1200	6					
3600 x 1200	3*		•			
3600 x 1200	6					
3200 x 1500	6				•	
3200 x 1600	12				•	
3200 x 1600	20				•	



BETON

	mm	Satin	Silk	Pol.	U.Soft	Riv/Slate
2600 x 1200	6					
3600 x 1200	3*		•			
3600 x 1200	6					
3200 x 1500	6				•	
3200 x 1600	12				•	
3200 x 1600	20				•	



ZAHA STONE

	mm	Satin	Silk	Pol.	U.Soft	Riv/Slate
2600 x 1200	6					
3600 x 1200	3*		•			
3600 x 1200	6					
3200 x 1500	6				•	
3200 x 1600	12				•	
3200 x 1600	20				•	



AMAZONICO

	mm	Satin	Silk	Pol.	U.Soft	Riv/Slate
2600 x 1200	6					
3600 x 1200	3*					
3600 x 1200	6					
3200 x 1500	6				•	
3200 x 1600	12				•	
3200 x 1600	20				•	



CALACATTA ROYALE CR01

	mm	Satin	Silk	Pol.	U.Soft	Riv/Slate
2600 x 1200	6					
3600 x 1200	3*					
3600 x 1200	6					
3200 x 1500	6				•	
3200 x 1600	12				•	
3200 x 1600	20				•	



CALACATTA ROYALE CR01R

	mm	Satin	Silk	Pol.	U.Soft	Riv/Slate
2600 x 1200	6					
3600 x 1200	3*					
3600 x 1200	6					
3200 x 1500	6				•	
3200 x 1600	12				•	
3200 x 1600	20				•	



COLORADO DUNES CD01

	mm	Satin	Silk	Pol.	U.Soft	Riv/Slate
2600 x 1200	6					
3600 x 1200	3*					
3600 x 1200	6					
3200 x 1500	6				•	
3200 x 1600	12				•	
3200 x 1600	20				•	



NIAGARA N01

	mm	Satin	Silk	Pol.	U.Soft	Riv/Slate
2600 x 1200	6					
3600 x 1200	3*					
3600 x 1200	6					
3200 x 1500	6				•	
3200 x 1600	12				•	
3200 x 1600	20				•	



TERRAZO CEPPO

	mm	Satin	Silk	Pol.	U.Soft	Riv/Slate
2600 x 1200	6					
3600 x 1200	3*					
3600 x 1200	6					
3200 x 1500	6				•	
3200 x 1600	12				•	
3200 x 1600	20				•	



WHITEHAVEN

	mm	Satin	Silk	Pol.	U.Soft	Riv/Slate
2600 x 1200	6					
3600 x 1200	3*		•			
3600 x 1200	6					
3200 x 1500	6				•	
3200 x 1600	12				•	
3200 x 1600	20				•	

• Available by special request.
Colours may vary in colour, tone and pattern.

Private Residence, Queensland
 Countertop & Splash-back: Retrostone
 Designed by: Design Duo



KRATER

	mm	Satin	Silk	Pol.	U.Soft	Riv/Slate
2600 x 1200	6					
3600 x 1200	3*					
3200 x 1500	6					
3200 x 1600	12					
	20					



IRON GREY

	mm	Satin	Silk	Pol.	U.Soft	Riv/Slate
2600 x 1200	6					
3600 x 1200	3*					
3200 x 1500	6					
3200 x 1600	12					
	20					



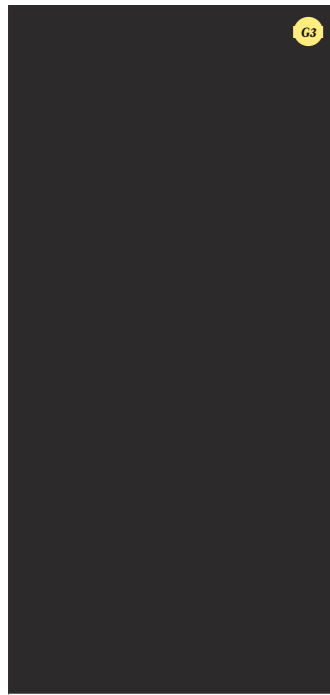
LAYLA

	mm	Satin	Silk	Pol.	U.Soft	Riv/Slate
2600 x 1200	6					
3600 x 1200	3*					
3200 x 1500	6					
3200 x 1600	12					
	20					



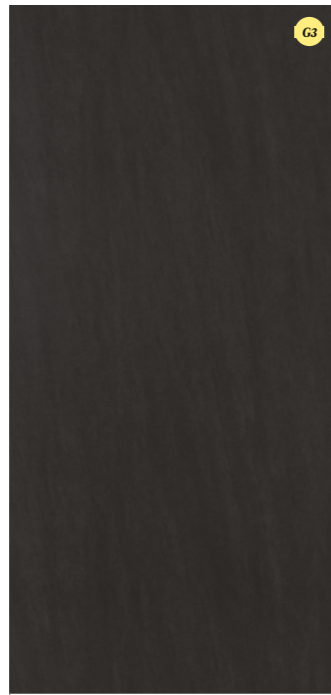
NERO ZIMBABWE

	mm	Satin	Silk	Pol.	U.Soft	Riv/Slate
2600 x 1200	6					
3600 x 1200	3*					
3200 x 1500	6					
3200 x 1600	12					
	20					



NERO

	mm	Satin	Silk	Pol.	U.Soft	Riv/Slate
2600 x 1200	6					
3600 x 1200	3*					
3200 x 1500	6					
3200 x 1600	12					
	20					



BASALT BLACK

	mm	Satin	Silk	Pol.	U.Soft	Riv/Slate
2600 x 1200	6					
3600 x 1200	3*					
3200 x 1500	6					
3200 x 1600	12					
	20					



CALATORAO

	mm	Satin	Silk	Pol.	U.Soft	Riv/Slate
2600 x 1200	6					
3600 x 1200	3*					
3200 x 1500	6					
3200 x 1600	12					
	20					



BLACK OBSESSION

	mm	Satin	Silk	Pol.	U.Soft	Riv/Slate
2600 x 1200	6					
3600 x 1200	3*					
3200 x 1500	6					
3200 x 1600	12					
	20					

• Available by special request.
 Colours may vary in colour, tone and pattern.





*Private Residence, NSW Australia
Countertop & furniture cladding: Blanco carrara
Designed by: Concepts by Gavin Hepper*



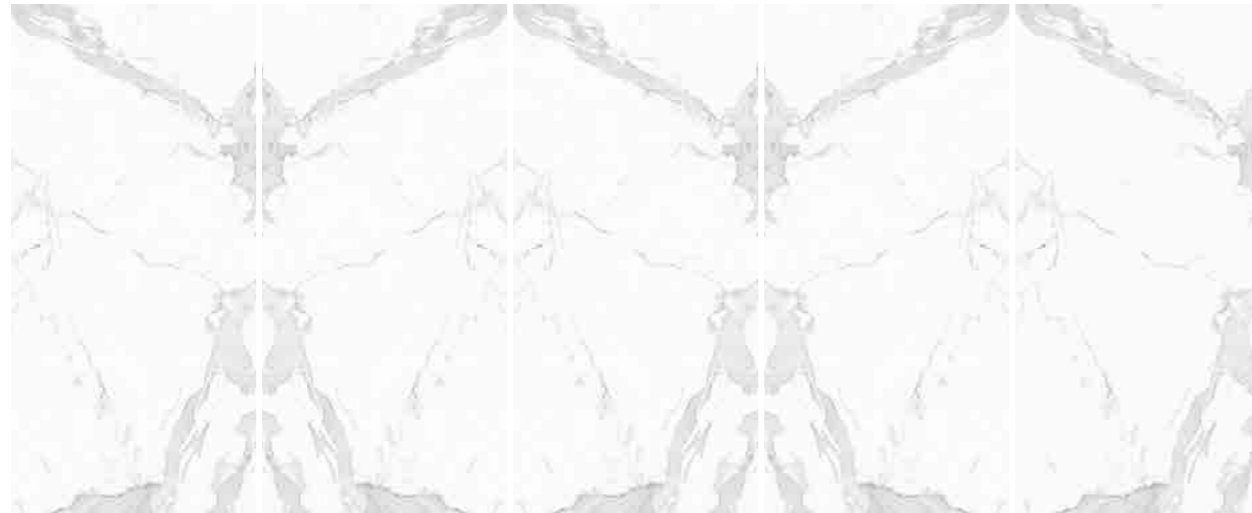
Private Residence, Australia
Countertop & back-splash: Himalaya Crystal
Designed by: Vida Design Studio
Image: Kristian Van Der Beek

Bookmatch & Endmatch

The Estuario, Calacatta, Calacatta Gold, Calacatta Luxe and Blanco Carrara can be presented with a Bookmatched effect (mirror effect) the same way the natural marble can be directly extracted from the quarries. There is a Reverse option (referred to with an "R") for each model in order to create Bookmatched effect.

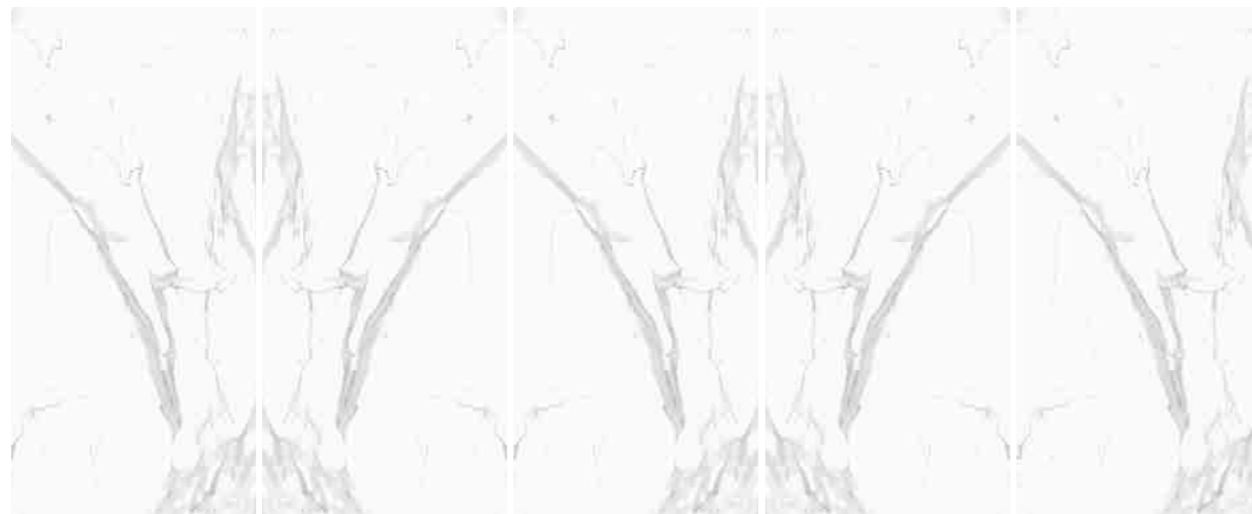
Endmatch is a very special feature in the Calacatta, Calacatta Gold and Blanco Carrara models. Using the same slab just turning it 180°, it's possible to obtain continuing vein with an endless pattern.

ESTUARIO E01 BOOKMATCH DECORPOLISH



Estuario E01 Estuario E01-R Estuario E01 Estuario E01-R Estuario E01

ESTUARIO E05 BOOKMATCH ULTRASOFT



Estuario E05 Estuario E05-R Estuario E05 Estuario E05-R Estuario E05

BLANCO CARRARA BC02 ENDMATCH SILK



Blanco Carrara BC02 Blanco Carrara BC02 Blanco Carrara BC02 Blanco Carrara BC02 Blanco Carrara BC02

ALEXANDRA BOOKMATCH ULTRASOFT



Alexandra AX01 Alexandra AX01R Alexandra AX01 Alexandra AX01R Alexandra AX01

CALACATTA LUXE BOOKMATCH ULTRASOFT & DECORPOLISH



Calacatta Luxe CI01 Calacatta Luxe CI01-R Calacatta Luxe CI01 Calacatta Luxe CI01-R Calacatta Luxe CI01

CALACATTA ROYALE BOOKMATCH ULTRASOFT



Calacatta Royale CR01 Calacatta Royale CR01R Calacatta Royale CR01 Calacatta Royale CR01R Calacatta Royale CR01

ARABESQUE BOOKMATCH ULTRASOFT



Arabesque AR01 Arabesque AR01R Arabesque AR01 Arabesque AR01R Arabesque AR01

CALACATTA ENDMATCH SILK



Calacatta C01 Calacatta C01 ↺ Calacatta C01 Calacatta C01 ↻ Calacatta C01

CALACATTA GOLD ENDMATCH ULTRASOFT & SILK



Calacatta Gold CG01 Calacatta Gold CG01 ↺ Calacatta Gold CG01 Calacatta Gold CG01 ↻ Calacatta Gold CG01

NEOLITH

touch.feel.live

Neolith Sydney
Unit 2, 246-252 Hoxton Park Rd,
Prestons, NSW, 2170

Neolith Melbourne
10 Sugar Gum Court, Braeside,
VIC, 3195

www.neolith.com

REV 24/05/23