

Mayfair

POOLS



Custom crafted
swimming pools and spas
since 1973



LET'S DIVE IN



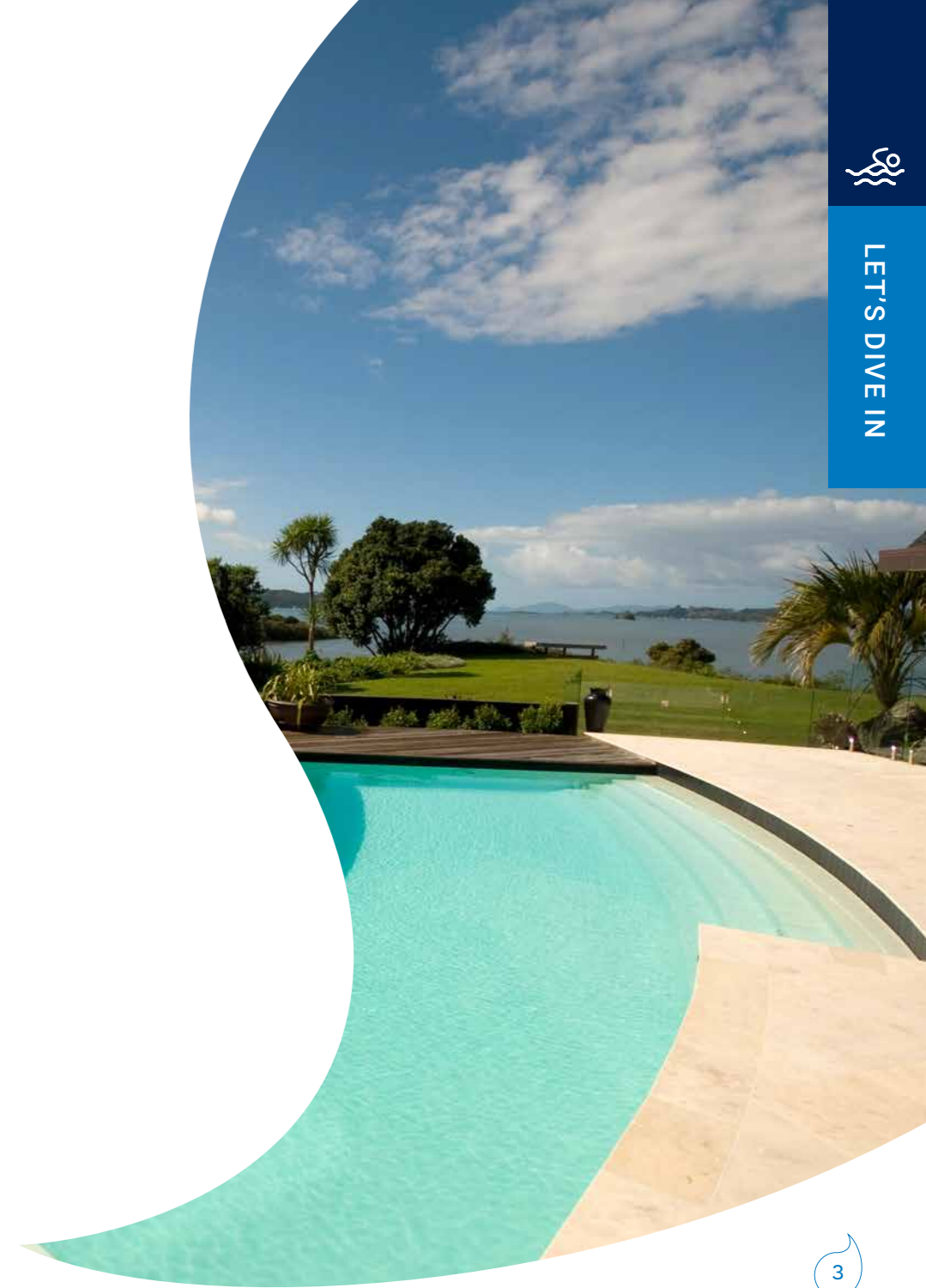
Custom Crafted for Life.

Mayfair Pools set the benchmark in the swimming pool industry, carving out a legacy designing and constructing award-winning swimming pools that are not only beautiful, but of the highest quality.

Mayfair swimming pools are built to last a lifetime using a proprietary design and construction process. Combined with an uncompromised level of service and workmanship, only the best supply partners and access to the latest technology in swimming pool design and build, you can relax knowing that our custom process will bring your dream to life, beyond what you think possible.



LET'S DIVE IN





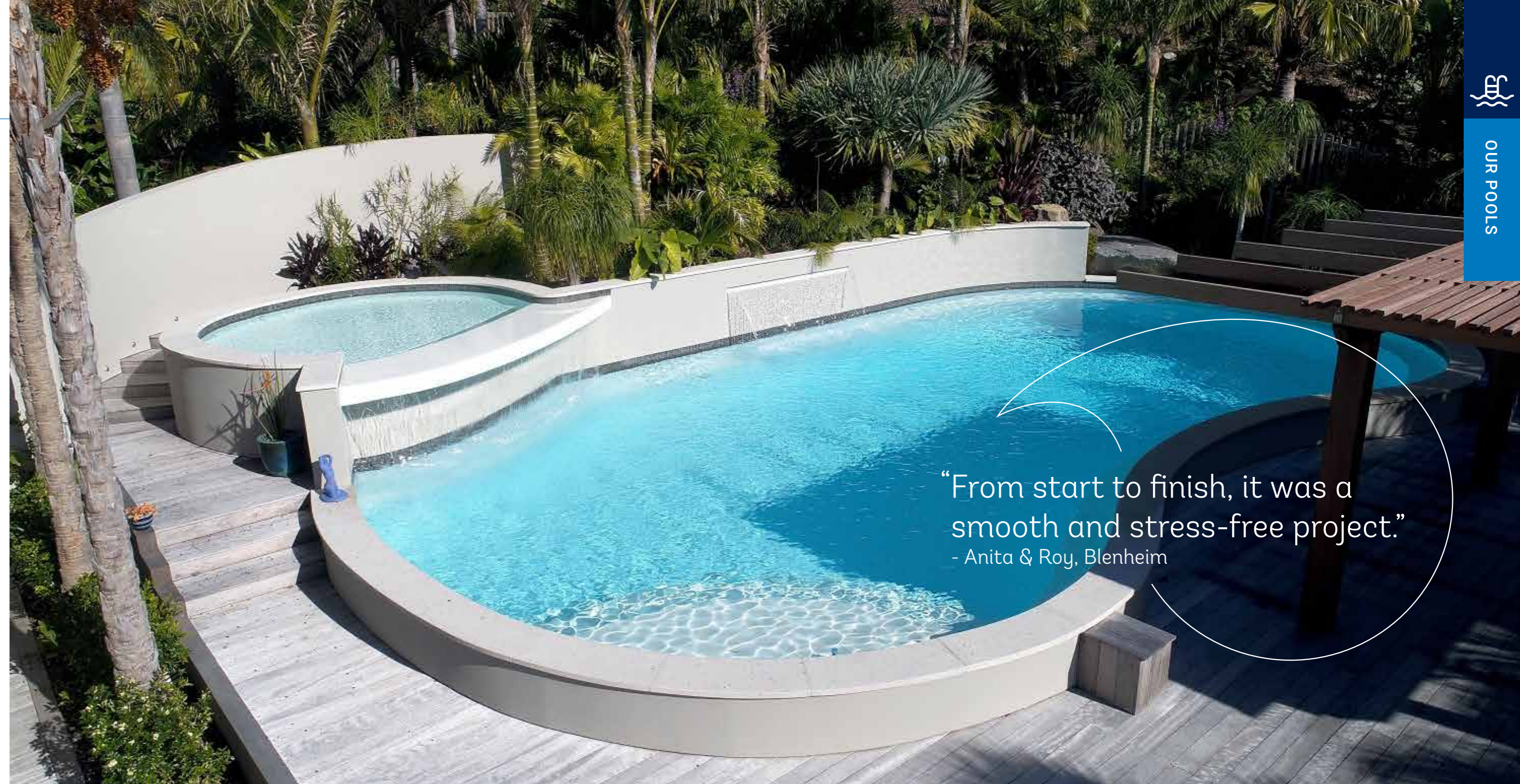
Experts in Design and Build

Whether you are building new, renovating an existing swimming pool, or looking for a commercial pool build, you are assured of the quality and expertise that comes with a company that has been building swimming pools for over five decades.

Not only do we custom design high-end pools and landscapes, we also work with New Zealand's best architects, designers and builders who rely on us to bring their vision, and their client's dream to life.

✔ **Mayfair Pools specialise in:**

- In-ground and above-ground swimming pools and spas
- Infinity pools
- Plunge pools
- Lap pools
- Heated pools
- Indoor pools
- Salt and freshwater pools
- Swimming pool renovations
- Commercial and resort pools
- School swimming pools and renovations



“From start to finish, it was a smooth and stress-free project.”
- Anita & Roy, Blenheim



OUR POOLS



The Mayfair Difference

Every Mayfair Pool is custom built using a proprietary swimming pool construction method. And because every part of the process is done on-site - including fibreglassing - there are no limitations to the design of your pool.

Whether it's an infinity edge pool overlooking the coast, a lap pool or endless swim system to achieve exercise goals, a plunge pool for a smaller section, a resort-style beach area, or an indoor hotel pool, your Mayfair Pool is limited only by your imagination.

Why Fibreglass?

✓ Longer Swimming Seasons

Fibreglass is a natural insulator meaning you will enjoy a longer swimming season along with reduced heating costs. And combined with the Mayfair proprietary insulation system, you have the longest swimming season of any pool on the market.

✓ More Style

Fibreglass comes in a variety of colours and styles – from Island Sands to Azure Blues and glitter finishes, providing you with lots of options when choosing the perfect design for your sanctuary. Your licensed Mayfair Agent will help you choose the best colour for your landscape.

✓ Gentle on Skin

Because of their smooth gel-coat surface, fibreglass pools are soft on feet and skin. The rough finish of a concrete pool can be hard on bare skin, meaning that active kids can often end up with grazes and scrapes.

✓ Durability

Fibreglass is an extremely strong, hard-wearing and durable material. It will outlast any other swimming pool surface – including concrete – providing you with years of stress-free swimming. Ongoing costs are minimised with a Mayfair fibreglass pool due to less maintenance, chemical requirements and lower energy consumption.

✓ Less Maintenance

Smooth and non-porous, a fibreglass pool is less likely to develop mould and algae like other surfaces – resulting in less cleaning, less chemicals and less ongoing maintenance costs. The surface cleaning can be done by an automatic robotic cleaner and the newest pool equipment and technology will take care of most of your water quality treatment, leaving you with more time to enjoy poolside.



Why Choose Mayfair

✔ Experience and expertise

Our nationwide team of craftsmen have been designing, building and renovating swimming pools for New Zealand conditions for over five decades - so whether you are building new or bringing an existing pool back to life, either in your own personal setting or a commercial situation, you are assured of the quality and expertise that comes with over 50 years' experience.

We are a national group with over 16 agents across 33 regions, aligned in our desire to be the very best and put you and your dream at the heart of our process.

✔ Only the best supply partners

We pride ourselves on working with only the best suppliers who provide the highest quality service and products.

Only premium equipment, designed for longevity, is used on Mayfair design pools, including fittings, filtration and purification systems, heating, tiling, pool covers and fencing.

We ensure you have access to, and the best advice, around the latest technology in swimming pool design and build.

✔ Highest quality design and workmanship

Our nationwide group of master pool craftsmen continue to push the boundaries in bespoke custom swimming pool designs, serving as a benchmark for the pool industry.

Our award-winning product, uncompromised level of workmanship, experience and service is of the highest quality and together delivers premium value to you.

✔ Custom crafted on any site, to any shape or size

Mayfair Pools are custom crafted – designed specific to your property, your family, your dreams and desires. Every build is designed to make the most of your property, health, fitness and lifestyle goals and as such, no two pools are the same.

Our licensed Mayfair Pools agents are there to guide you on the best design for you and your family needs, including steps, infinity edges, hidden pool cover pits, swim-outs, beaches, paddling pools, adjacent spa pools, water features, lighting, safety parameters and the all-important poolscaping to put the final touches on your own unique sanctuary.

Mayfair Pools can be created any size, any shape, anywhere, ensuring you get exactly what you want.

✔ Proprietary design, insulation and construction system

The Mayfair Pools proprietary design, fibreglass, insulation and construction system means your pool structure maintains long-term integrity, is more efficient to heat, is easier to maintain and clean and will outlast any other pool on the market.

A Mayfair pool will also stay warmer across the seasons, ultimately reducing long-term heating costs due to the unique insulation layer built into our pool substructure.

✔ Superior custom-sprayed fibreglass shells

Sprayed on-site to the shape of your pool, our custom-sprayed fibreglass system provides flexural strength and superior resistance to water erosion and chemical interaction, resulting in a longer lasting pool.

✔ Preferred by architects and the design and build community

Working with Mayfair Pools master swimming pool builders means that an architect's creativity knows no limits.

We are the preferred swimming pool builders for many of New Zealand's leading architects, designers and high-end builders – who rely on us to bring their design, and their client's dream – to life.

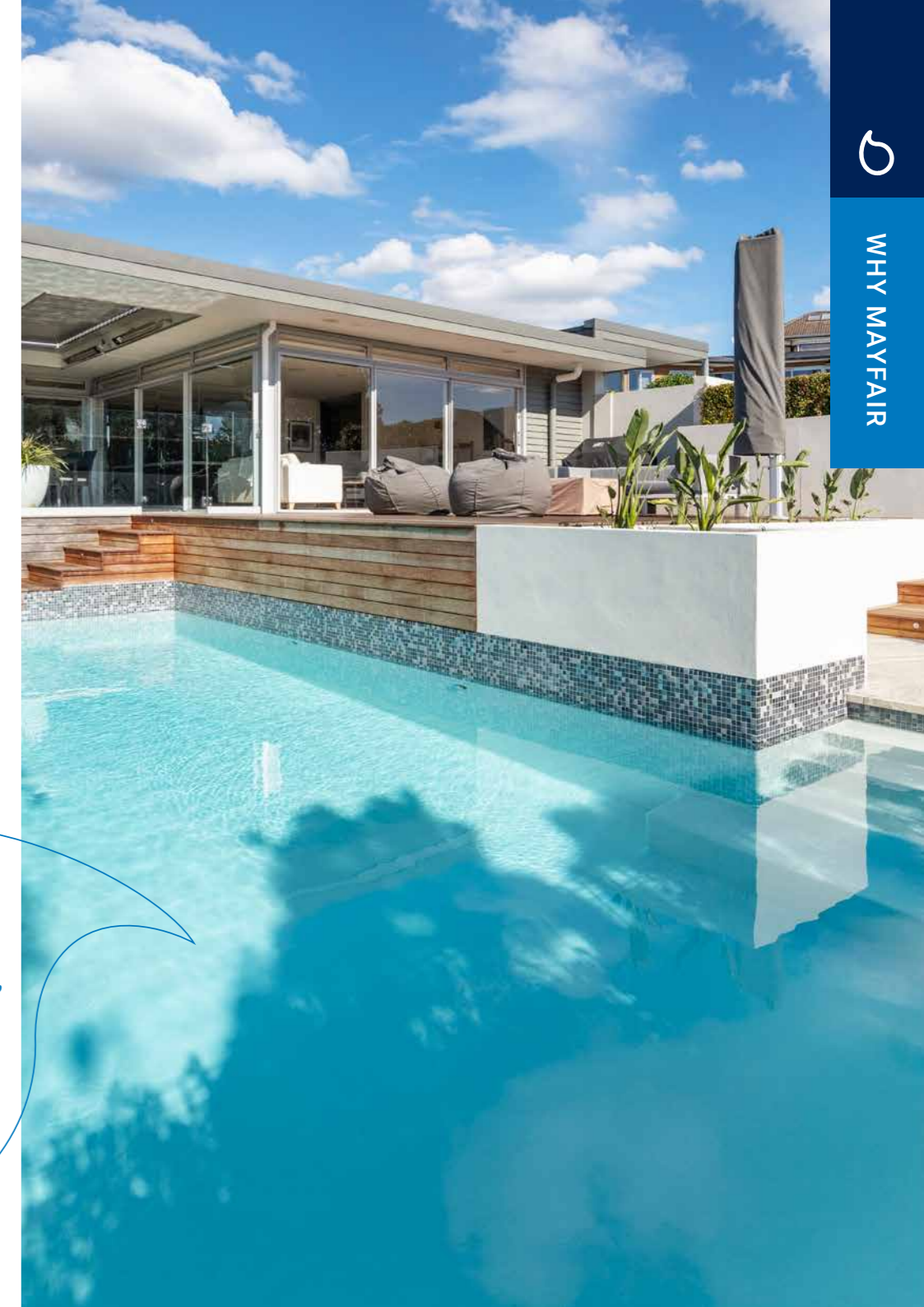
✔ We handle the whole process

We understand that building a pool can be daunting. At Mayfair Pools we ensure your experience is stress-free, with every component of the design, build and consenting process handled by our team.

Every council has different requirements when it comes to consents and our team of agents are well-versed in the process.

Relax knowing you are in good hands and that we are committed to bringing your dream to life.

“I needed a team who I could depend on entirely, who were able to guide me through the process, help me make key decisions and work with me to ensure the best outcome. The entire build and installation team were brilliant.”
– Belinda, Hawkes Bay





Commercial Pools and Spas

Mayfair Pools licensed agents are experienced commercial swimming pool builders, having been selected for many extensive commercial swimming pool projects throughout New Zealand, Australia and the Pacific Islands.

The freedom of design, dedication to detail, proprietary construction method, ease of construction, reliability, unparalleled durability and cost-effectiveness of a Mayfair Pool has seen them installed in some of Australasia's leading resorts, hotels, motels, apartments (even on rooftops), schools, retirement villages and public pool complexes.

We are the preferred swimming pool builders for many of New Zealand's leading architects, designers and high-end builders – contact your local agent today to discuss your commercial pool project.

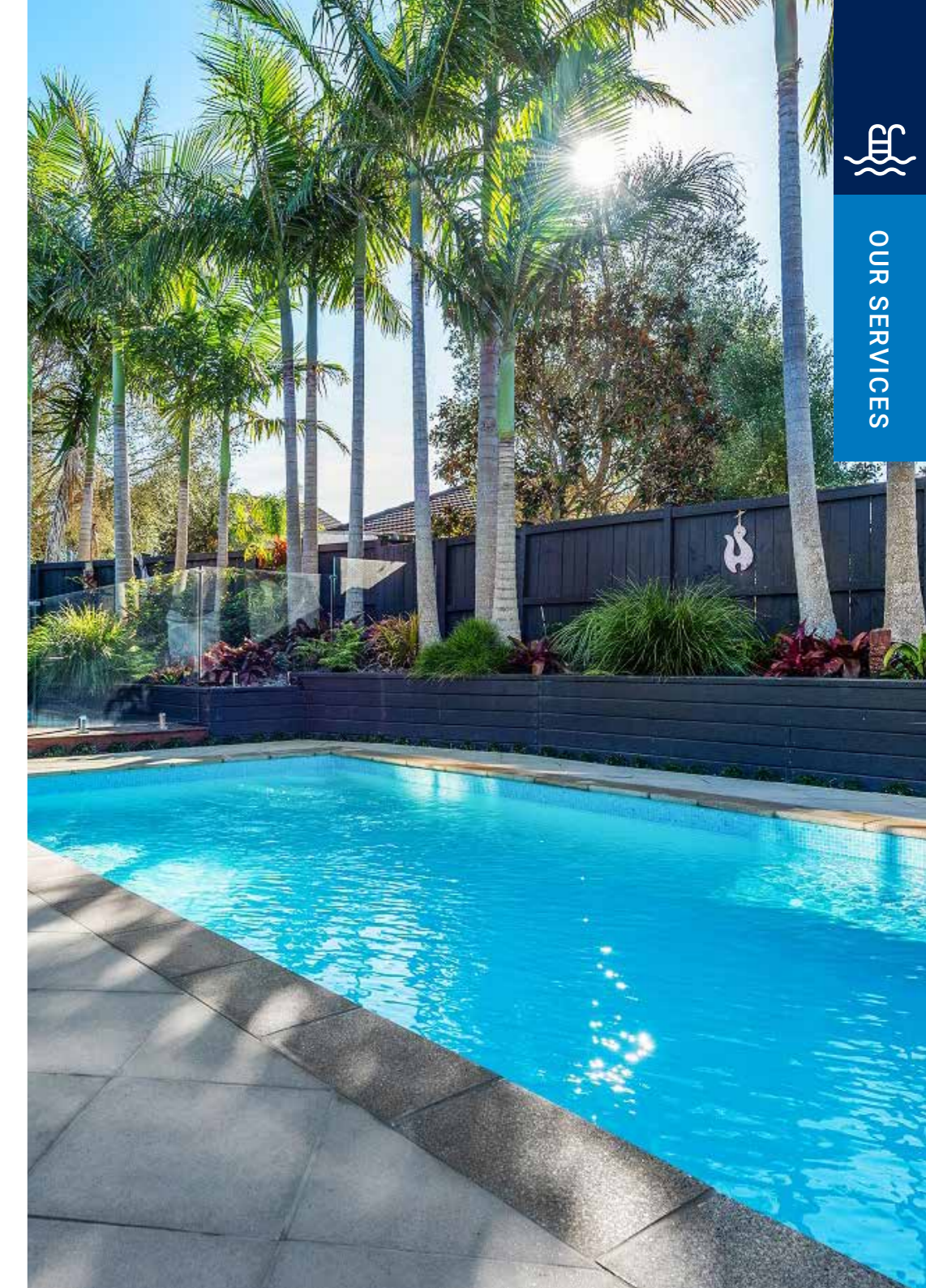
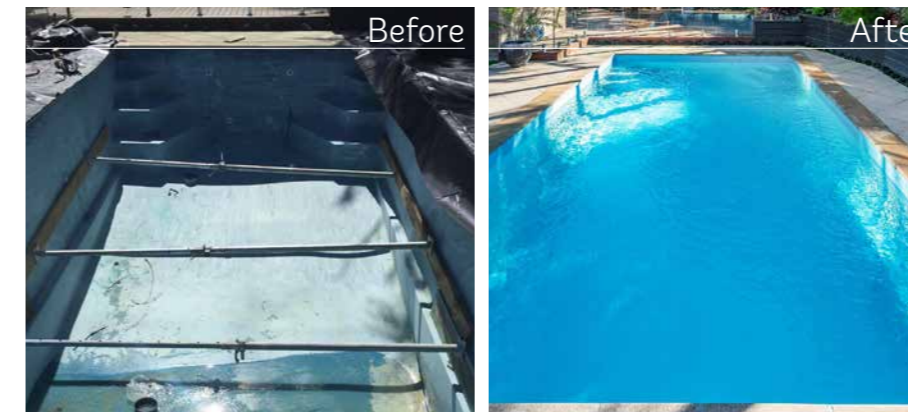
“In my experience, they deliver and communicate timeframes, accept challenges and finish with a well-crafted product that looks fantastic.”
– Holly Nichol, Holly Nichol Landscape Architect

Pool Renovations

Whether your old pool has paint problems, is leaking or has broken with ground movement, Mayfair Pools agents are specialists in all aspects of swimming pool renovations.

Mayfair Pools licensed agents can resurface all types of existing swimming pools, including concrete, update your swimming pool surrounds, upgrade heating, filtration and sanitisation systems, or add in features such as lighting, water features and endless swim-currents.

Breathe life back into an outdated pool and transform your home with a makeover that will ensure it is functioning at its very best and can be enjoyed for many more years to come.



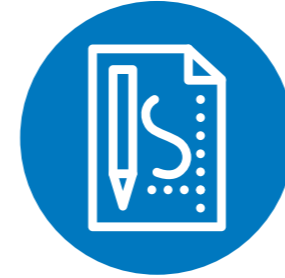


Our Process

Every Mayfair Pool is custom built using a unique proprietary swimming pool construction method. And because every part of the process is done on site, there are no limitations to the design of your fibreglass pool – from the size, to the depth and number of steps, these are all tailored to suit your requirements and property.

We will discuss the size, shape, depth, swimming pool location, number of steps, lighting, fibreglass colour and all other pool specifications at our initial meeting.

“Installing a Mayfair pool is one of the best decisions we have ever made.”
– Brendon, Auckland



1. Conception and design

Getting to know you, your family and unique environment is paramount in the early stages of the process. Our initial consultation is all about understanding your needs and desires, and ensuring that we design and build a pool suited to your lifestyle, wellness, fitness and family goals.



2. Consent process

Once your quote is approved and sales contract signed, we will then submit your design for building consent. Some councils also require resource consent for some builds, along with new water regulation compliance. Your local agent will discuss this with you when you meet.



3. Excavation

Once consent is granted, your Mayfair Pools team will commence work on site. This begins with the excavation of your site, ready for the inground substructure to be built.



4. Build

Once the site is excavated, the pool build begins. The substructure including framing, concrete floor and insulation is first, followed by the on-site fibreglassing. All pool plumbing, filtration systems and additional components are installed and tested, and tiling and landscaping completed at this stage.



5. Handover

With everything now complete, all is left is for you to dive in! We will complete a full handover with you to ensure you are comfortable with every component of your pool and all your questions are answered. We are with you every step of the way and are there to support you through the lifetime of your pool and beyond.

Once consent is issued (this will usually take 4 - 6 weeks depending on your local council), we aim to have you swimming within 4 - 6 weeks. Your local agent will discuss time frames with you when you meet.



OUR DESIGN



Unrivalled Design

The design of your pool and poolscape reflects as much about you as any other part of your home and lifestyle. Our specialist team have extensive experience designing and crafting pools that stand out from the rest.

From the size and shape of your pool to features such as steps, swim-outs, beach areas, paddling pools, spas, tiles, lighting, waterfalls and safety-approved fencing, our team will advise you on the design and features that will elevate and transform your pool, exceed your lifestyle goals and amplify your property investment.

“The results are incredible and we are thrilled with every aspect of it.”
- Kimberley & Reuben, Tauranga



OUR DESIGN



Your Mayfair Pool: Design Considerations



+ POOL COPING AND LANDSCAPING

Personalise your pool surrounds with pavers, decking or concrete (or a mix). Pavers and tiles are the most common pool coping option due to their durability, appearance and colour choices – providing you with the flexibility to create a space that is truly unique.

Timber decking is perfect if you are looking for a natural look and feel for your pool surround, and can beautifully complement pavers and concrete for a mixed medium design.

Concrete can be more affordable in comparison to pavers or timber, but equally stunning with colour variety and textures that give a safe, non-slip finish.

Plants and rocky outcrops can create a seamless flow between pool and backyard, whilst also softening and adding colour to your poolscape. Chat to your agent for plant ideas that are best suited to your local climate and existing garden and how they can incorporate these into your pool design.

The cost of your Mayfair pool includes a reinforced concrete beam around the top of the pool, ready for pavers, decking or concrete as per the Mayfair design.

Any additional paving, decking and landscaping requirements should be discussed at your initial site meeting.

★ PRO TIP *When choosing your pool coping it's important to think about materials that will create a sense of cohesion with your surroundings. Mirroring your pool to suit your home and landscape will create a harmonious scene. Coping is not only functional, but can also complete the visual design of your pool.*



+ POOL WATER AND FILTRATION

The type of pool water you would like your family to swim in is one of the most important decisions you will make.

The system you choose will clean and sanitise your pool water – keeping it free from bacteria, pathogens and parasites. It also controls the taste, 'feel' and smell of the water – having a direct effect on your swimming experience.

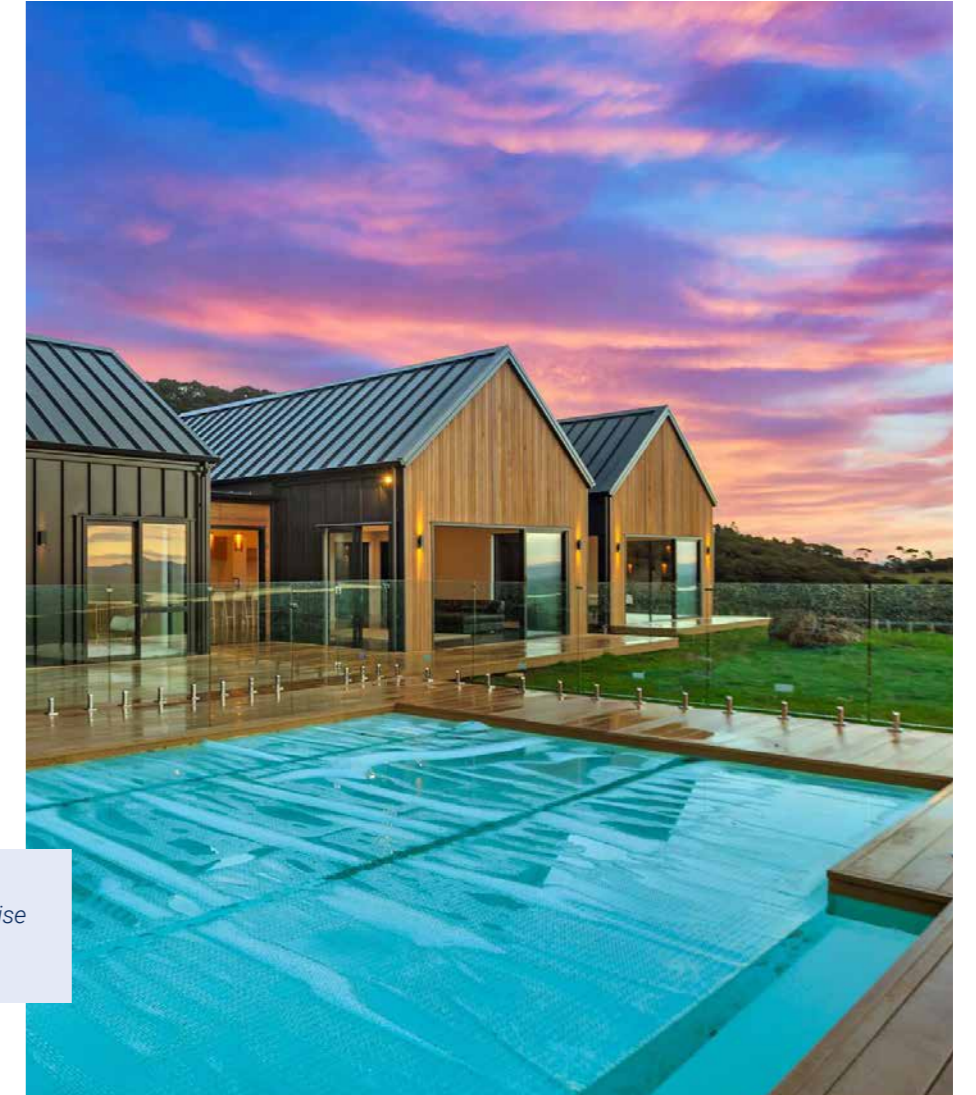
All Mayfair swimming pools can be optioned as a freshwater, saltwater, mineral or chlorine system, and we will advise on the best pool water option for your pool and your family at our initial meeting.

+ POOL COVERS

Covering your swimming pool can offer numerous benefits for your pool and your family. Not only is it a simple and highly effective way of keeping your pool free of garden debris and bugs, a pool cover saves time and money by maintaining the water temperature and ultimately extending your swim season, minimising evaporation, reducing chemical use, saving time on maintenance and cleaning, and reducing energy costs of heating the pool.

Your local agent can offer a range of thermal, bubble or slatted covers, which can be managed automatically or manually. And for a more aesthetically pleasing option, in-ground roller systems are a great way to hide your pool cover away. They can be installed into a timber deck or into tiled/paved areas and can be used for both thermal and bubble covers.

★ PRO TIP *Thermal covers are best suited to heated pools; bubble covers raise the water temperature of unheated pools; and slatted covers are beneficial to both.*



Your Mayfair Pool: Design Considerations

★ PRO TIP *The benefits of adding a water feature to your pool are numerous. Not only do they look great and are fun to play in, but research indicates that the relaxing sound of flowing water has a calming effect on our mind and body, providing real health benefits for spiritual and mental wellness. In addition, water features can improve your pool's circulation, helping keep pool water clean and algae free.*



+ LIGHTING, HEATING AND WATER FEATURES

Transform your pool into a resort out of a travel magazine with pool lighting and features.

Having the option to dive into your pool – day or night – and through all seasons, can add another level of freedom to your swimming pool lifestyle.

Enhance the peaceful poolside tranquility with the calming sounds of flowing water from a waterfall or cascade feature. Create a special ambiance and stunning visual impact with changing lighting effects – turning your pool into a nighttime oasis.

You can also define your pool area and steps leading to it with perimeter lighting to create the ultimate poolscape.

Heated swimming pools are a great idea if you plan to swim throughout the seasons. It adds value to your investment providing you with the reassurance that whatever the weather your pool is consistently warm.

The right heating and insulation system for your pool will depend on your local climate, the size of your pool, your budget and how often you plan to use it. Electrical heating (heat pumps), solar, gas heating and pool blankets and covers are all options that your local agent will discuss with you.

Redefine your swimming experience with features that will enhance your property, add a unique touch to your pool and provide you with endless moments of zen.

★ PRO TIP *Endless pool systems or swim jets provide all the benefits of a traditional lap pool, in a fraction of the space. The swim-current makes your pool feel as long as a river, so you can swim 'endlessly' without ever making a flip turn!*

The current can be adjusted to your speed, stroke, and ability. And the beauty is that the endless pool or swim jet technology can be applied to any Mayfair Pool or retrofitted to existing pools.

+ FENCING

Every swimming pool in New Zealand is required to have an adequate barrier in order to prevent unsupervised access by children under five years of age. As a pool owner it is your responsibility to ensure that your pool area is safe and secure.

All pools need to be fenced as per your local council consent requirements and your Mayfair agent will be able to advise on local regulations.

Fencing isn't all about safety though – our agents can advise on design options that will not only comply with the rules, but enhance the look of your swimming pool area with stylish, durable and low maintenance options.

Glass pool fencing offers a sophisticated, elegant and unobtrusive look whilst aluminium pool fencing can be a cost-efficient and maintenance-free option. Your local agent will advise on the best option for your landscape, budget and safety obligations.



+ SPAS

Built in spas: Incorporating a custom spa into your pool design will provide you and your family with unique opportunities for exercise and wellness routines, forms of relaxation, and physical health benefits – not to mention beautify your pool area.

Mayfair Pools can be constructed with an integrated or adjacent spa so you can enjoy the best of both worlds! The spa can be built into a corner, side or end of the pool depending on the pool shape, with the two bodies of water separated by a wall; constructed so they are separate entities; or even as an overflow.

The health benefits and enjoyment your family will gain from the inclusion of a spa with your new pool will make it well worth the investment!

Above-ground spas: Most Mayfair Agents are able to supply a variety of above-ground spas, swim spas and hot tubs. Chat to your local agent about which options may be right for you.





0800 629 324 mayfairpools.co.nz

Mayfair
POOLS