

KRAUSE
BRICKS



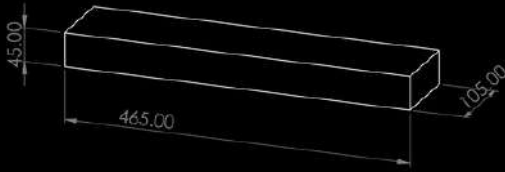
2025 RANGE

krausebricks.com

IMPERIAL

EXTRUDED

465 x 105 x 45mm



- 38 Bricks per m²
- 448 Bricks per pallet
- 11.79m² per pallet
- 171kg per m²

EMPEROR

EXTRUDED

390 x 105 x 45mm

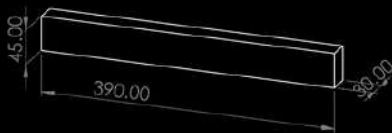


- 46 Bricks per m²
- 504 Bricks per pallet
- 10.96m² per pallet
- 165.6kg per m²

EMPEROR FACINGS

EXTRUDED

390 x 30 x 45mm

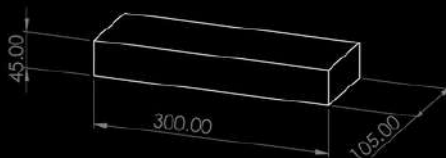


- 46 Bricks per m²
- 1,050 Bricks per pallet
- 22.83m² per pallet
- 46kg per m²

MINI EMPEROR

EXTRUDED

300 x 105 x 45mm



- 59 Bricks per m²
- 588 Bricks per pallet
- 9.97m² per pallet
- 165.2kg per m²

EMPRESS FACINGS

EXTRUDED

290 x 30 x 50mm

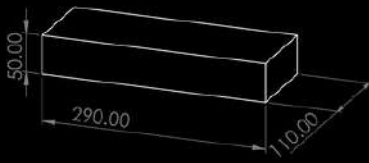


- 55 Bricks per m²
- Quantity per pallet varies by order
- 47 - 54kg per m²

EMPRESS

EXTRUDED

290 x 110 x 50mm

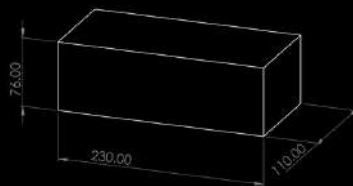


- 55 Bricks per m²
- 616 Bricks per pallet
- 11.20m² per pallet
- 159.9kg per m²

STANDARD 76MM

PRESSED AND EXTRUDED

230 x 110 x 76mm

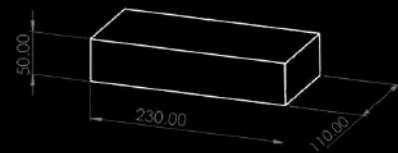


- 48 Bricks per m²
- 525 Bricks per pallet
- 10.94m² per pallet
- 163.2kg per m²
- 153.6kg per m²

MINI EMPRESS

PRESSED AND EXTRUDED

230 x 110 x 50mm



- 69 Bricks per m²
- 770 Bricks per pallet
- 11.16m² per pallet
- 165.6kg per m²

PAVING TILES

TEXTURED AND SMOOTH FINISH

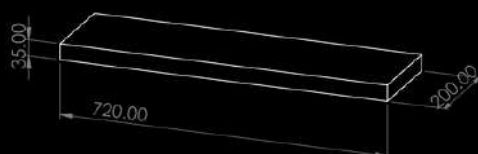
230 x 76 x 16mm



- 48 Tiles per m²
- 50m² per pallet
- 19.2kg per m²

KRAUSE KLAD

720 x 200 x 35mm



- 9.26 Tiles per m²
- 60 Tiles per pallet
- 6.48m² per pallet
- 69.45kg per m²



WHEELERS HILL HOME

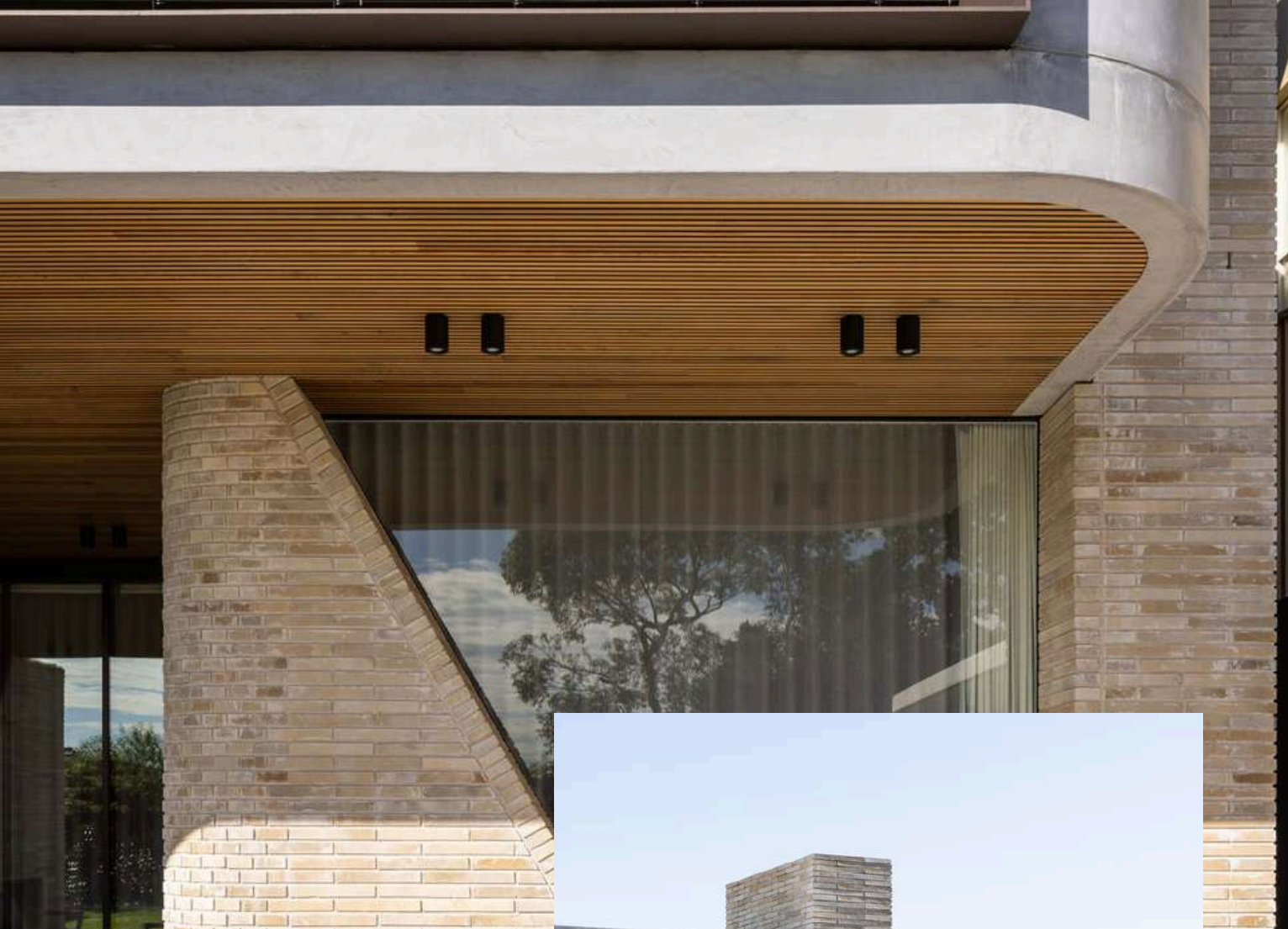
*Krause Emperor Bricks in Ghost Grey
with a sponge mortar finish.*

Design: Matyas Architects

Build: Markus Builders

Photos: Alex Reinders





BLAKEHURST HOME

Krause Emperor Bricks in Ghost Grey

Design: EMK Architects

Build: J Build Construction Group

Photos: Simon Whitbread



WATERFALL HOUSE

Krause Pressed Creams

Design: Clare Cousins Architects

Build: Original Projects

Photography: Tess Kelly





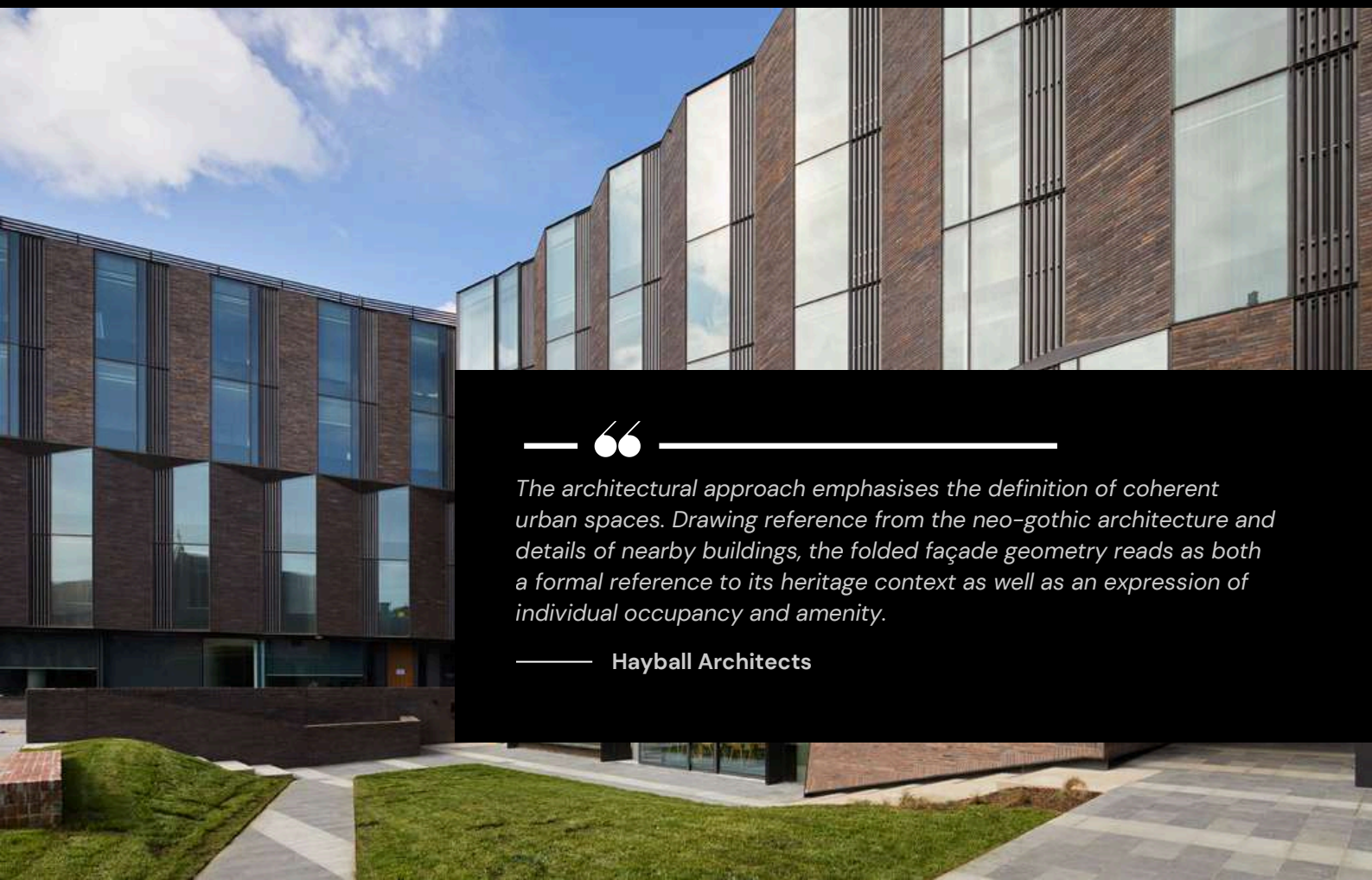
TRINITY COLLEGE STUDENT ACCOMMODATION
UNIVERSITY OF MELBOURNE

Krause Emperor Bricks in Grampian Blues

Design: Hayball Architects

Build: Harris HMC

Photography: Tom Roe



“

The architectural approach emphasises the definition of coherent urban spaces. Drawing reference from the neo-gothic architecture and details of nearby buildings, the folded façade geometry reads as both a formal reference to its heritage context as well as an expression of individual occupancy and amenity.

— Hayball Architects



THE MOORINGS

Krause Rustic Red Brick Tiles

Design: Bayley Ward Architects

Build: Figurehead Construction

Photography: Emma Cross



271 SPRING STREET

Krause Standard 76mm Bricks in Old Melbourne Town

Design: Wardle

Photography: Peter Bennetts





A streetscape of two storey brickwork makes for a scale and material appearance consistent with its neighbours along Little Lonsdale Street.

It is not overtly grand, but rather scaled for people and aims to create an engaging relationship with the passerby.

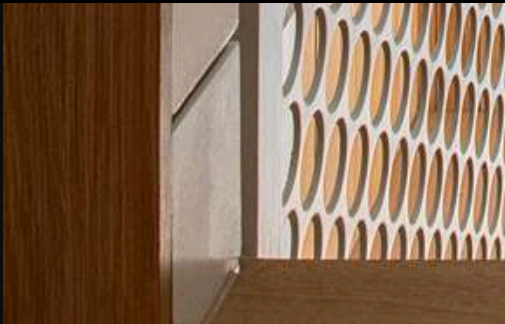
Wardle, Architect

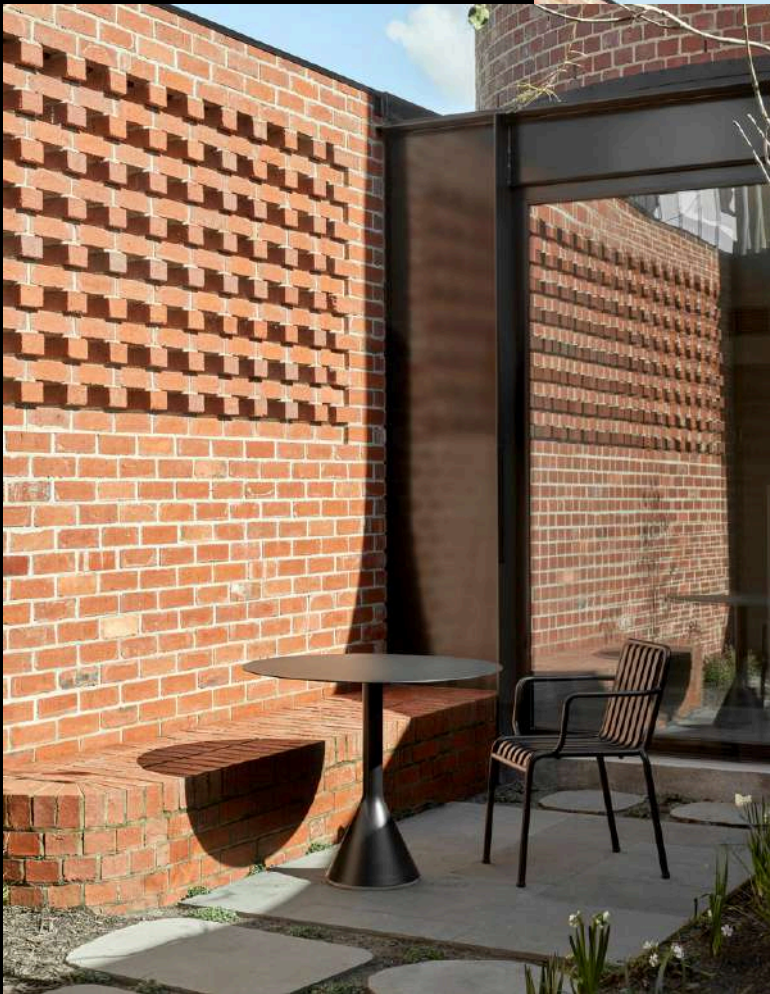




SOUTH MELBOURNE HOME
Krause Emperor Bricks in Sandstone

Design: Neil Architecture
Photography: Hilary Bradford





SOMERVILLE HOUSE

Krause Standard 76mm Pressed Bricks in Heritage Red

Design: Coy Yontis Architects

Bricklaying: Hayden's Bricklaying

Photography: Peter Clarke

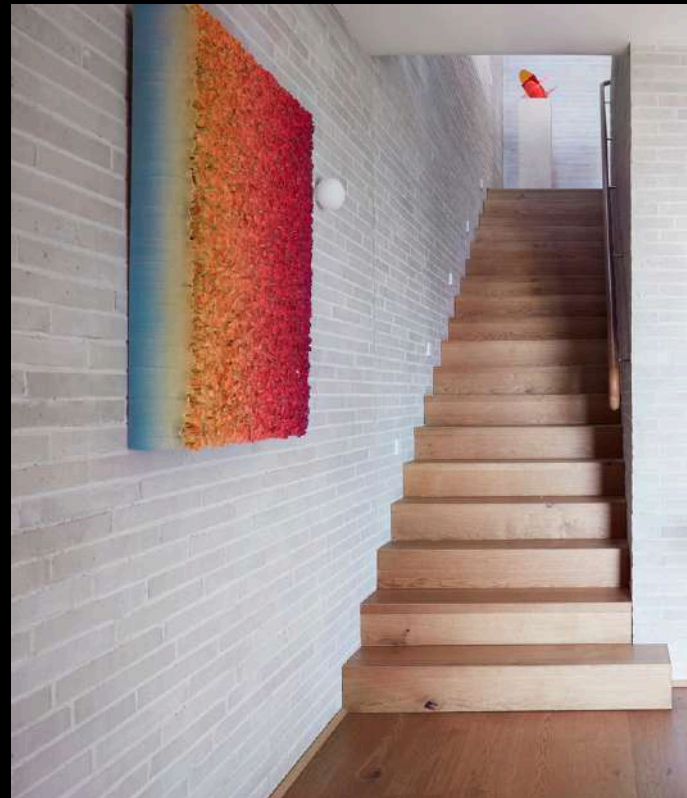


SANDCASTLE

*Krause Emperor Bricks in Ghost Grey.
Sponge mortar finish on internal brickwork.*

Design: Luigi Rosselli Architects & Raffaello Rosselli Architects

Photography: Prue Ruscoe





RUSKIN ELWOOD

Krause Mini Empress Bricks in Smoke Grey

Design: Fieldwork Architects

Photography: Kim Landy





RARE HARE FOOD & WINE STORE
Krause Rustic Paving Tiles in Grampian Blues

Design: Projects of Imagination
Photography: Peter Bennetts



POTTS POINT HOUSE

Krause Emperor Bricks in Sandstone

Design: Ergo Architects

Photography: Sarah Braden

THINK
BRICK
AWARD WINNER

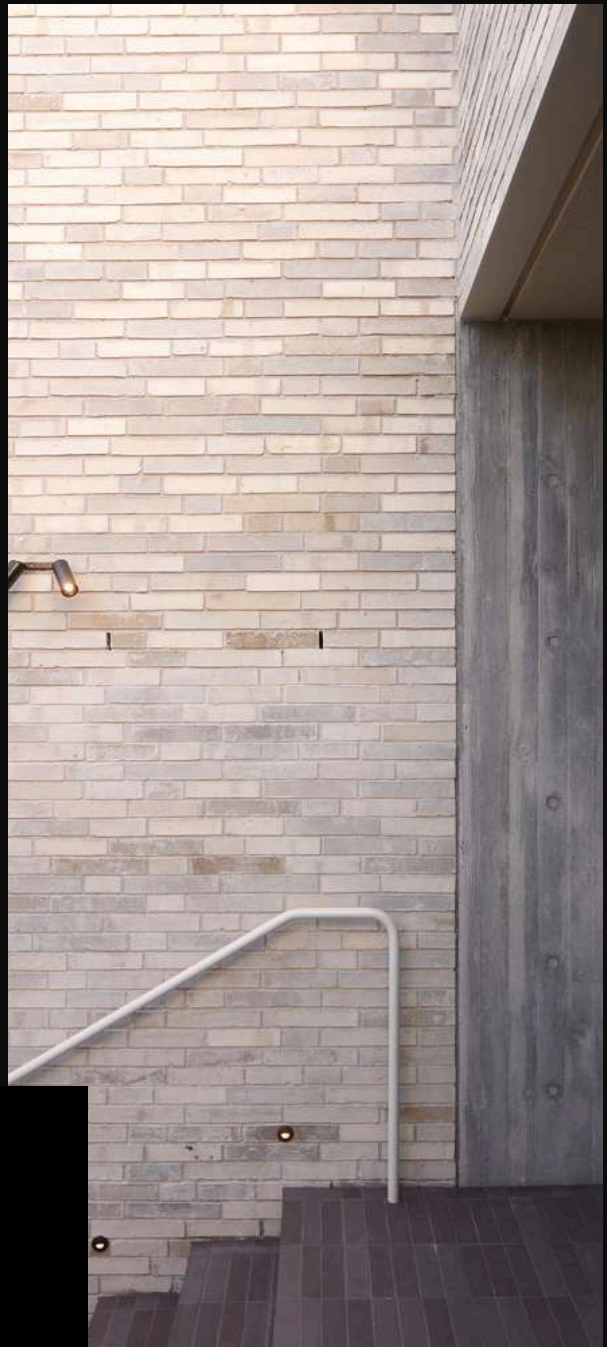
PHOENIX CENTRAL PARK

Krause Emperor Bricks in a custom Phoenix blend

Design: Wardle & Durbach Block Jagers

Photography: Trevor Mein





PADDINGTON HOME

Krause Empress Bricks in Ghost Grey

Design: Those Architects

Photography: Luc Remond





TOORAK HOME

Krause Emperor Bricks in Sandstone

Design: Cera Stribley

Photography: Derek Swalwell

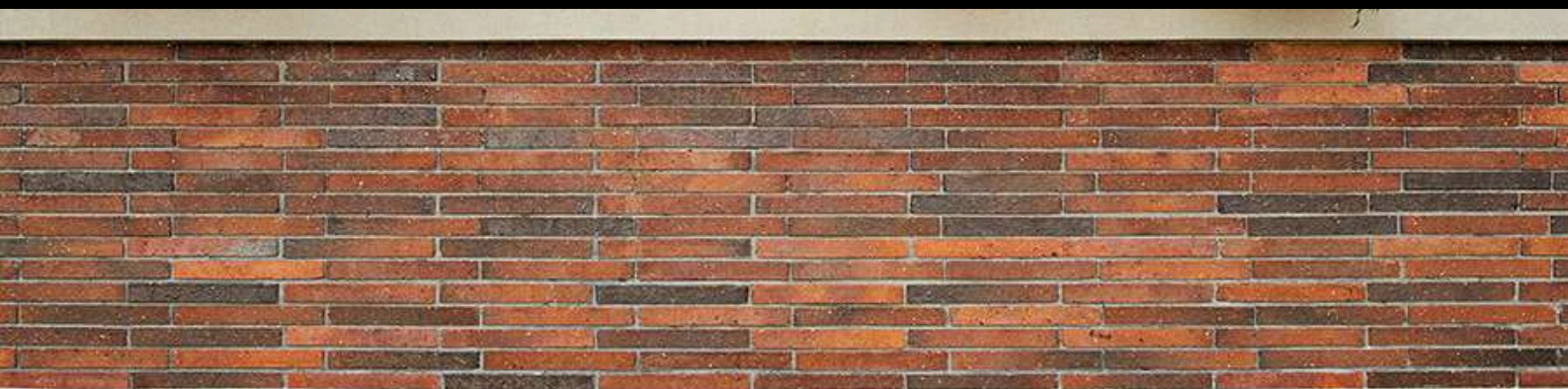




MONT ALBERT HOME

Krause Emperor Bricks in Mid-Blend

Photography: Peter Bennetts





**THINK
BRICK**
AWARD WINNER

**MONASH UNIVERSITY
LEARNING & TEACHING BUILDING**
Krause Mini Empress Bricks in a custom blend

Design: Wardle
Photography: Peter Bennetts



MATILDA 159

Krause Mini Emperor Facings in Dark Tan

Design: Projects of Imagination

Photography: Peter Bennetts





MALVERN HOME

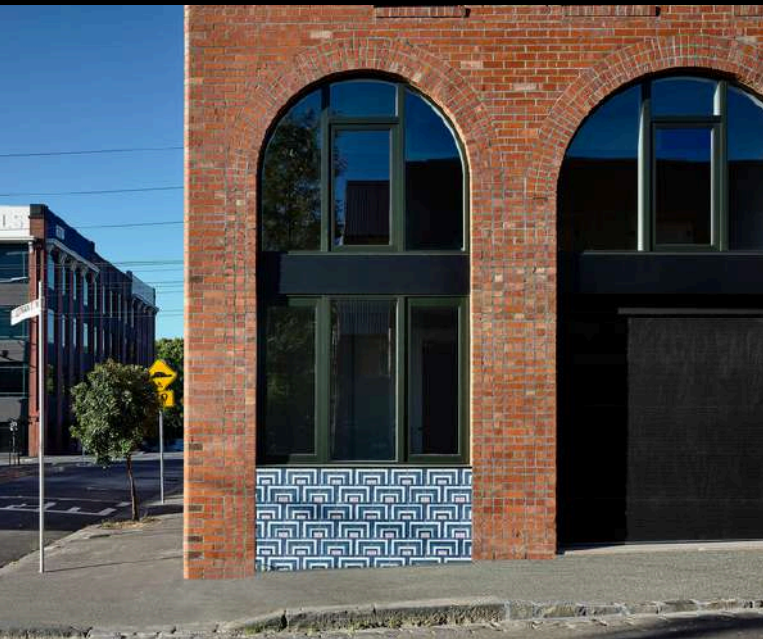
Krause Mini Empress Bricks in Smoke Grey

Photography: Peter Bennetts

LOWER TEMPLESTOWE HOME
Krause Emperor Bricks in Mid-Blend

Design: FIGR Architecture & Design
Photography: Peter Bennetts



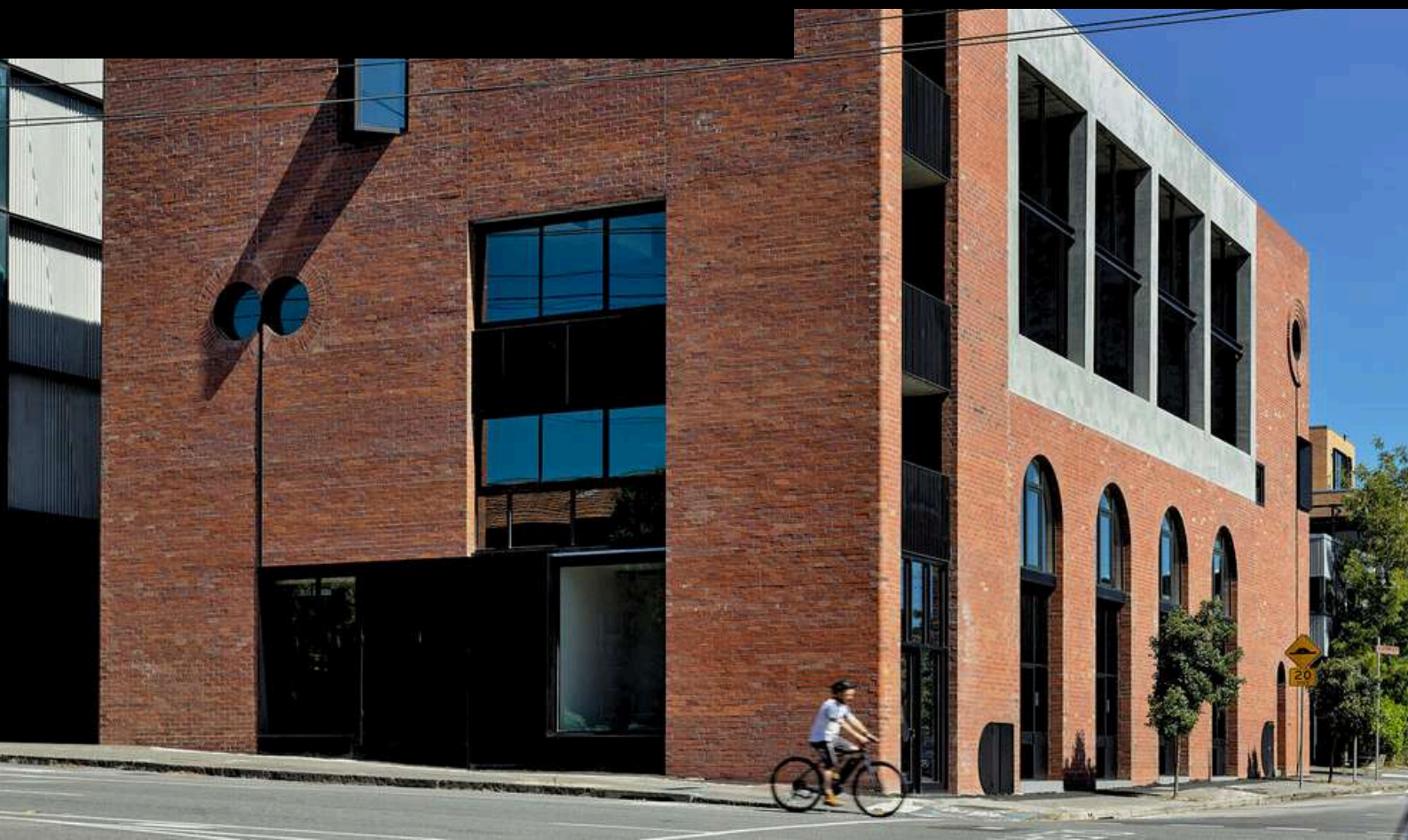


THE LOTHIAN

Krause Standard 76mm Bricks in Heritage Red

Design: Kennedy Nolan

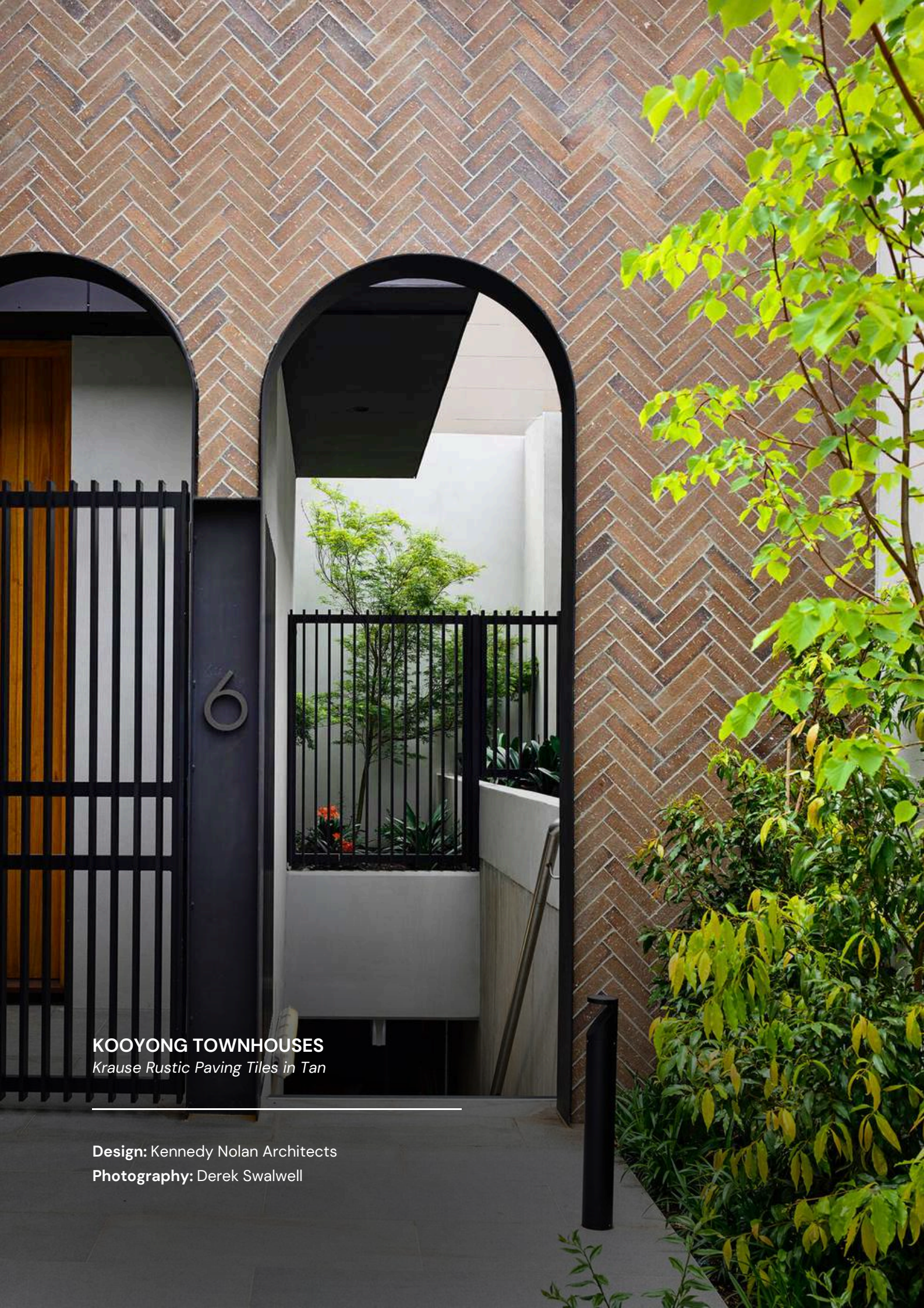
Photography: Derek Swalwell





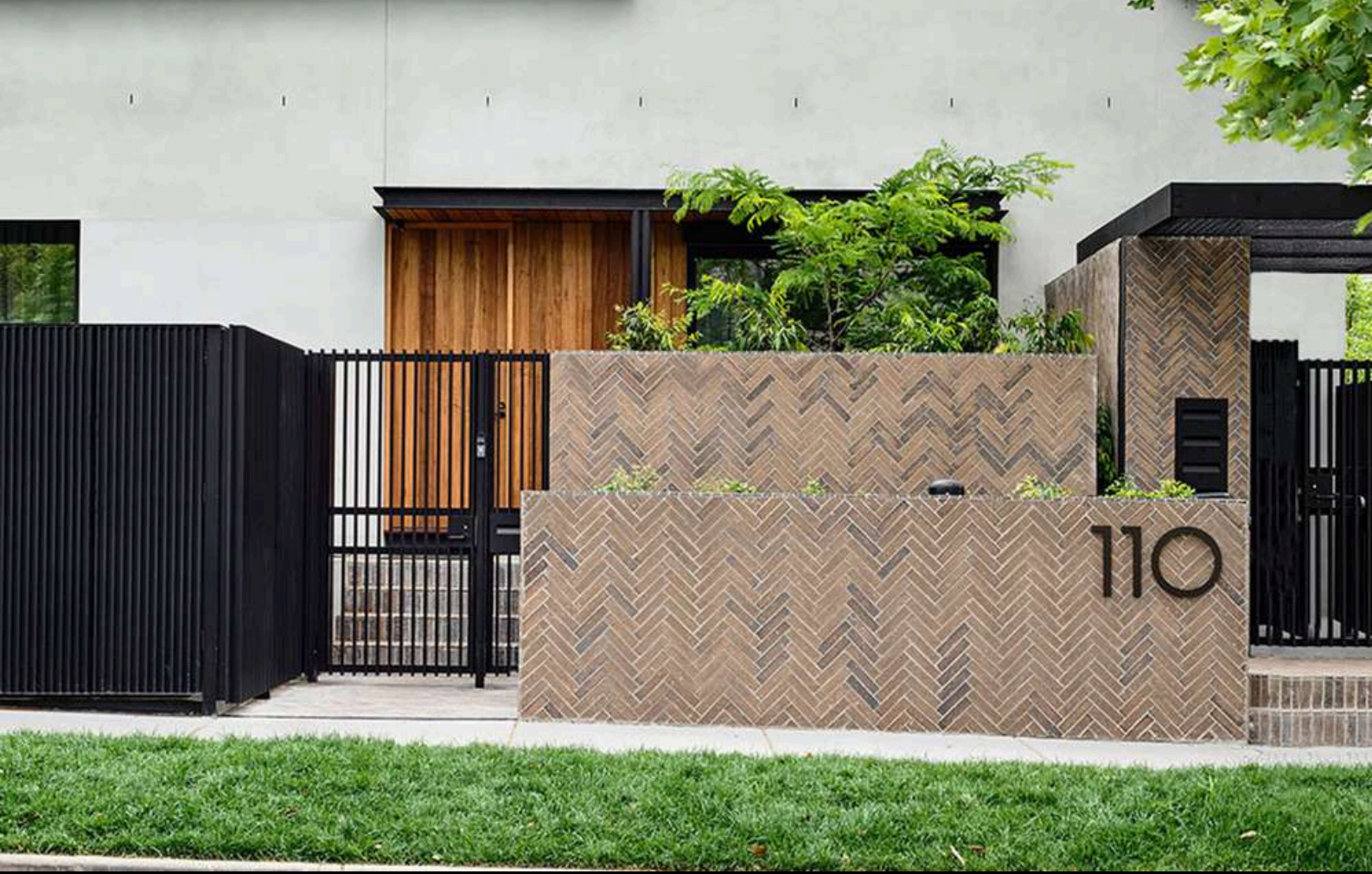
WARRNAMBOOL HOME
Krause Emperor Bricks in Sandstone

Design: Mathew Morse Architect
Photography: Matt Seebeck



KOoyong Townhouses
Krause Rustic Paving Tiles in Tan

Design: Kennedy Nolan Architects
Photography: Derek Swalwell





IVANHOE HOME

Krause Standard 76mm Bricks in Red Blue

Photography: Peter Bennetts





PIPPINS

Krause Emperor Bricks in Ghost Grey

Design: Webster Architecture

Photography: Timothy Kaye





The design of this project was guided by two principles: a thoughtful response to the environment and a pursuit of elegant simplicity.

Nestled on a hillside, we sought to create a home that seamlessly integrated with its surroundings while standing independently as an architectural statement.

———— Webster Architecture





IRRIKI HOUSE

Krause Emperor Bricks in Autumn

Design: Madeleine Blanchfield Architects

Photography: Anson Smart



Inspired by the original masonry elements, the new form is created using red bricks, which come together in a sharp rectilinear silhouette. The combination of texture and warmth is brought internally, leaving the crafted finish of the modular features exposed.

Together with a mostly muted palette, the bricks are combined with timber and terrazzo flooring to bring a robustness and depth.

———— The Local Project





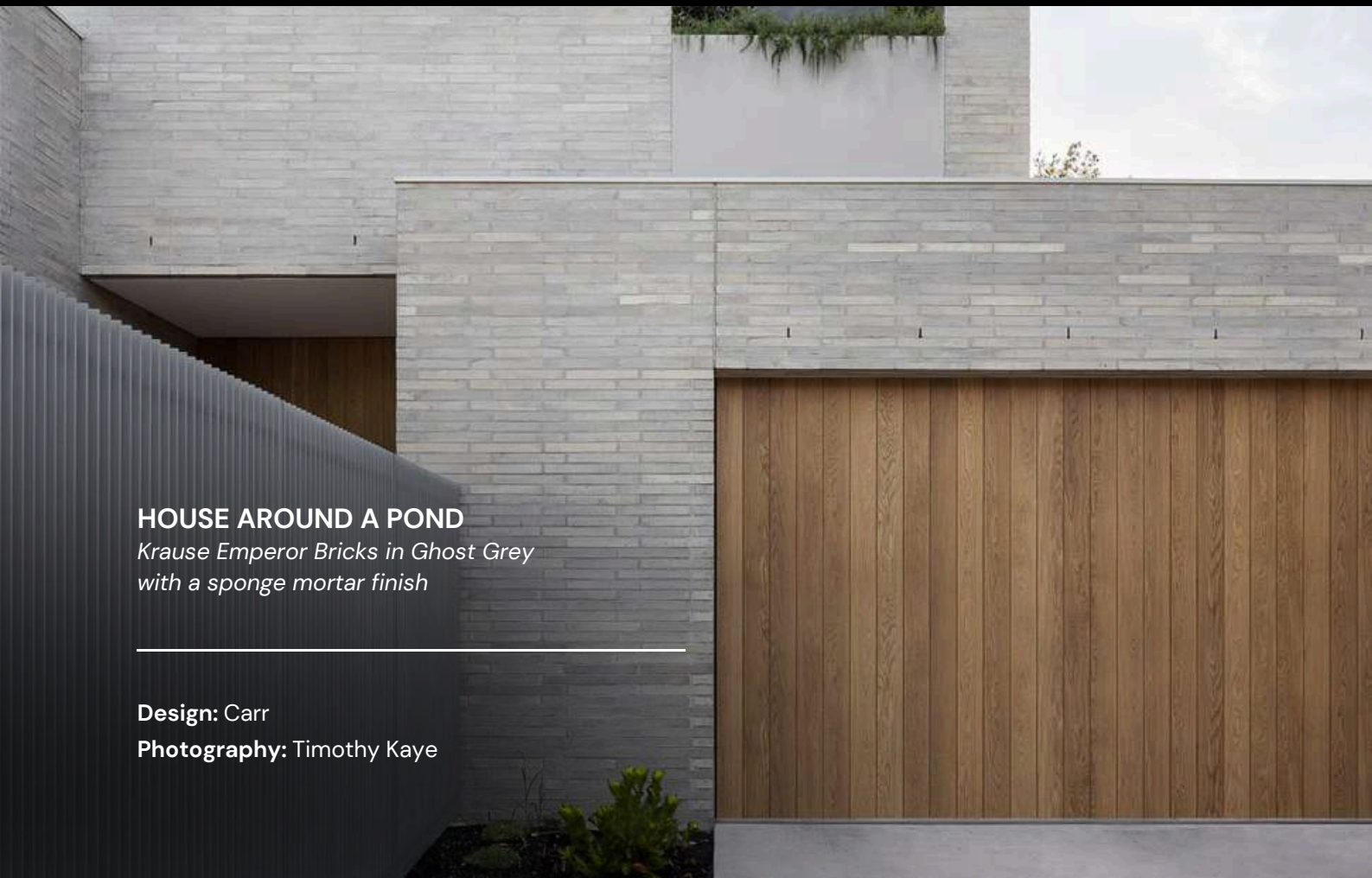
HAMPTON HOME

Krause Emperor Bricks in Mid-Blend

Design: McKimm

Photography: Dave Kulesza





HOUSE AROUND A POND
*Krause Emperor Bricks in Ghost Grey
with a sponge mortar finish*

Design: Carr
Photography: Timothy Kaye



HOTEL BRITOMART

*Krause Emperor 30mm Facings in precast panels
in a custom Warm Ghost Grey blend*

Design: Cheshire Architects

Photography: Samuel Hartnett, Petra Leary



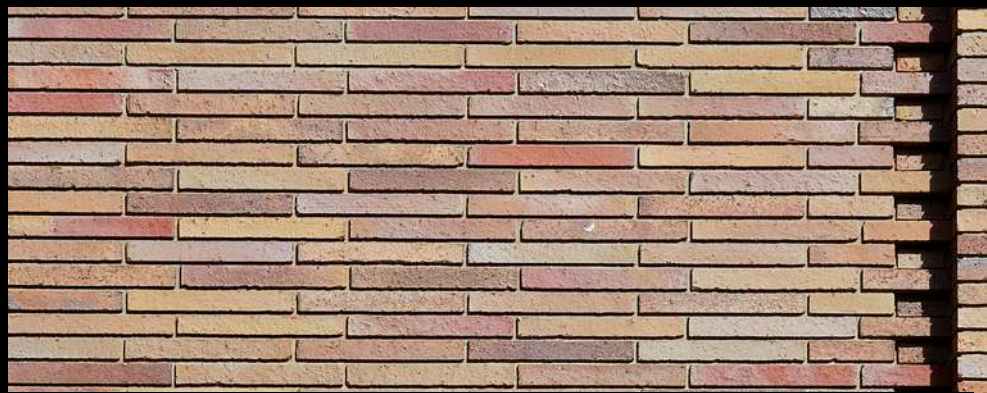


HOME ALPHINGTON

Krause Rustic Red Brick Tiles

Design: Cera Stribley

Photography: Peter Bennetts



HAWTHORN EAST TOWNHOUSES

Krause Emperor Bricks in Autumn

Design: Zeno Entity Architects & Sepehr Toghyani

Photography: Peter Bennetts





GLEN IRIS HOME
Krause Emperor Bricks in Ghost Grey

Design: Sova Studio
Photography: Nala Design

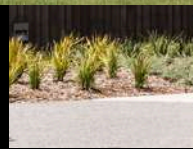
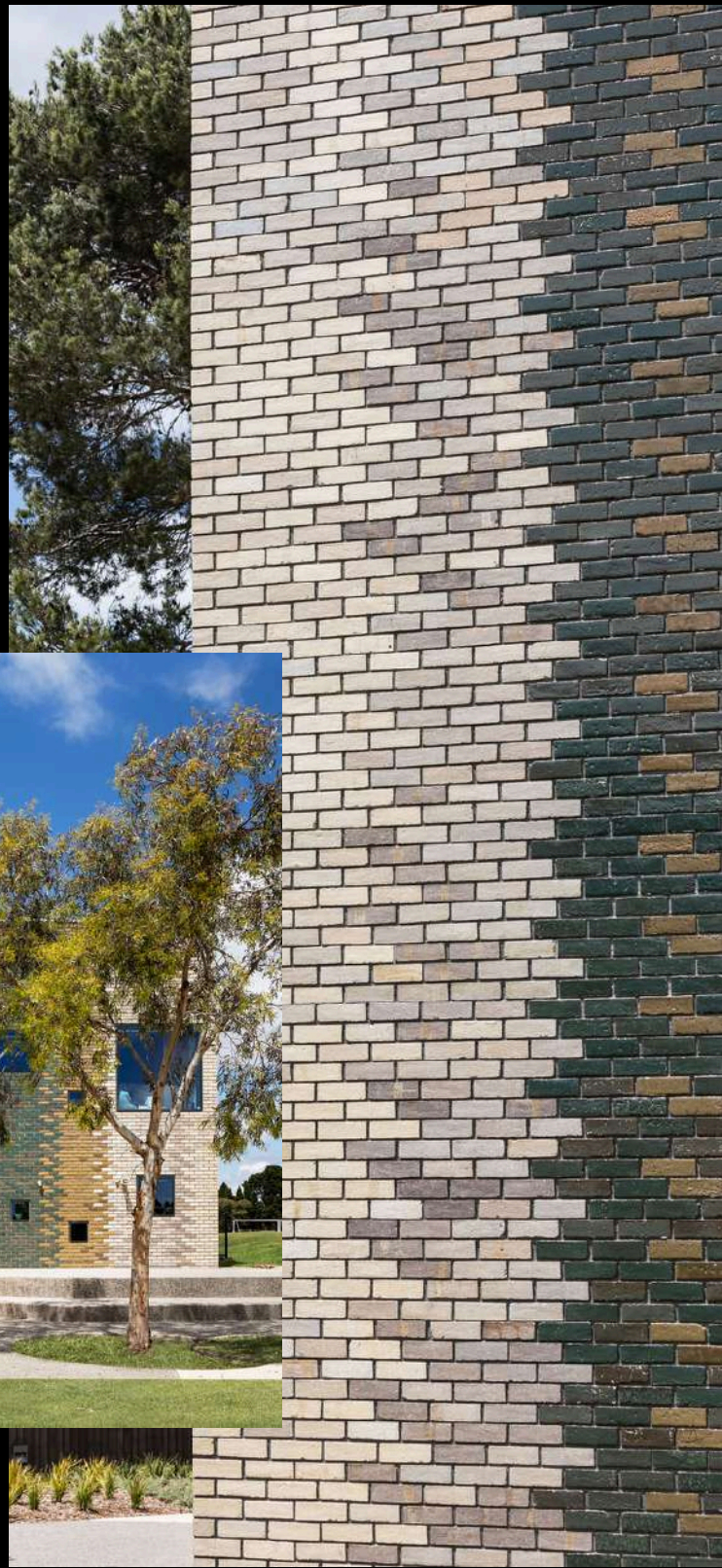


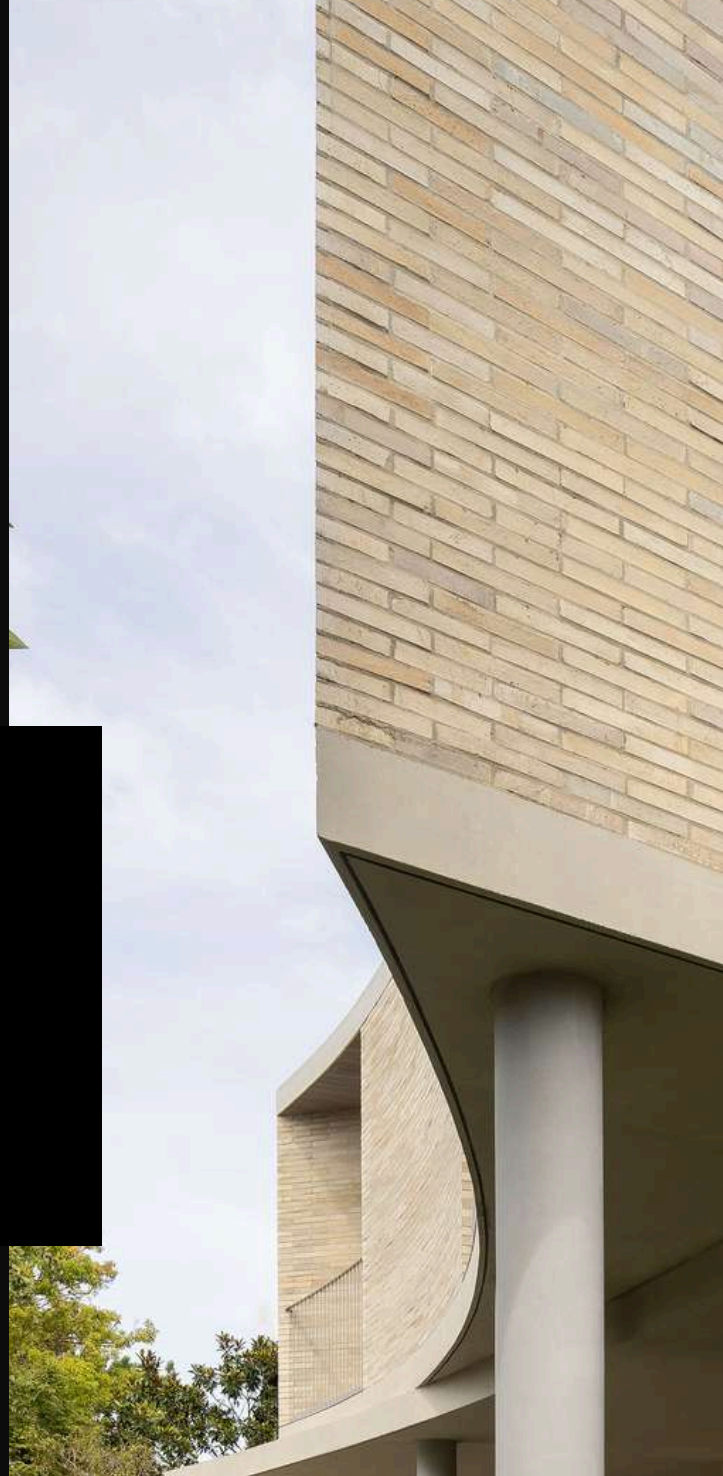
GEELONG COLLEGE

Krause Standard 76mm Bricks, custom hand-glazed

Design: Wardle

Photography: Katya Menshikova





GATHERING HOUSE

Krause Emperor Bricks in Ghost Grey

Design: Inarc Architects

Photography: Timothy Kaye





FINTONA GIRLS SCHOOL

Krause Mini Empress Bricks in Light Blend Grampian Blues

Design: Lyons Architecture

Photography: Diana Snape



CARLTON HOME

Krause Emperor Bricks in Grampian Blues

Design: Sonelo Design Studio

Photography: Peter Bennetts





EDITION TOORAK
Krause Emperor Bricks in Ghost Grey

Design: Cera Stribley Architects



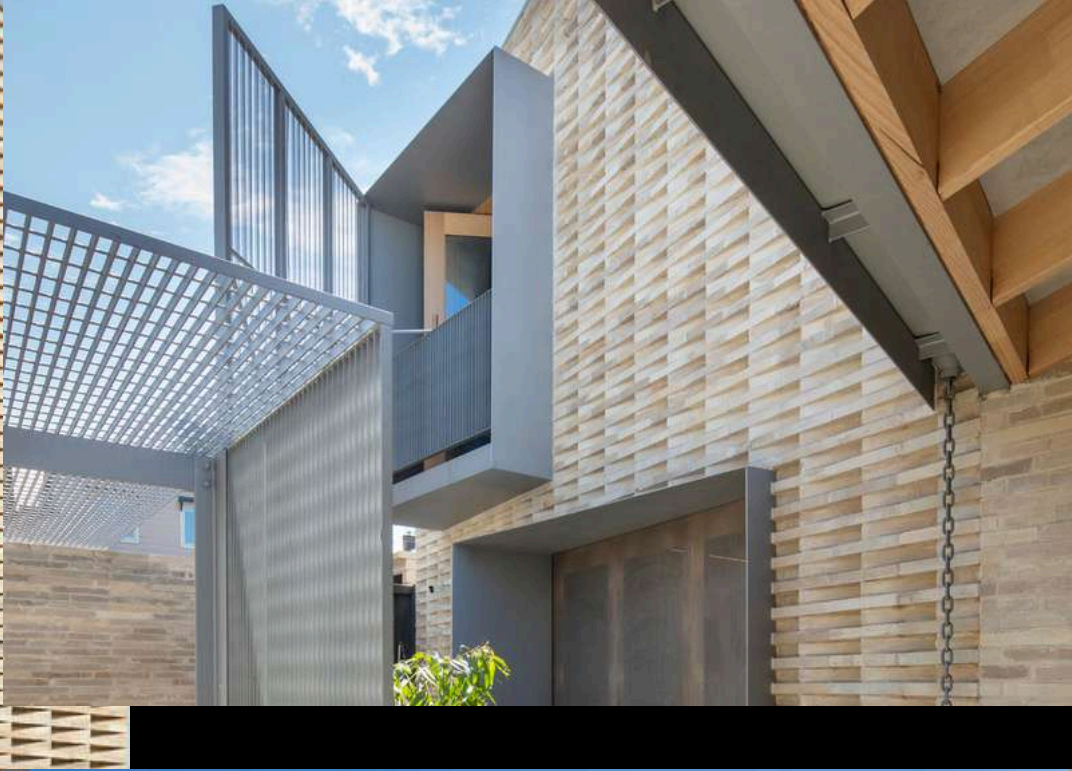
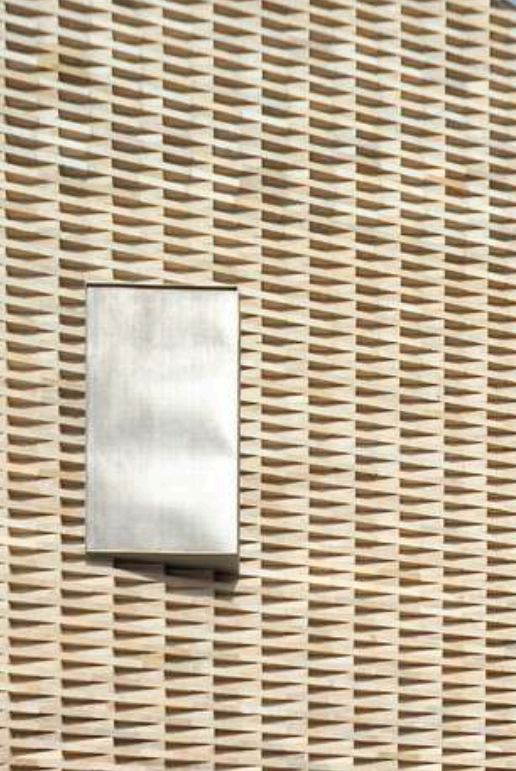
DIVIDED HOUSE

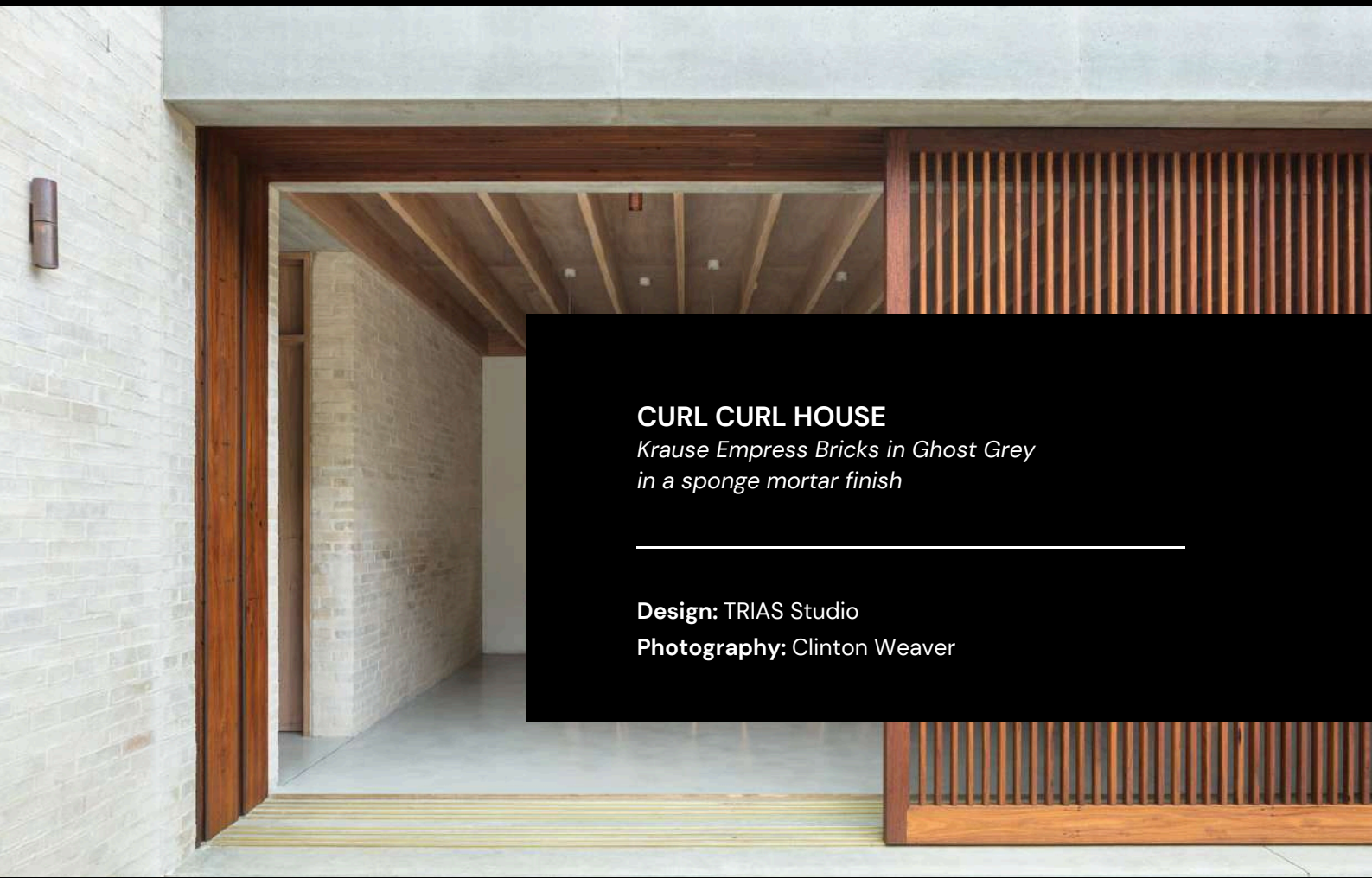
Krause Emperor Bricks in Ghost Grey

Design: Jackson Clements Burrows

Photography: John Gollings

THINK
BRICK
AWARD WINNER





CURL CURL HOUSE

*Krause Empress Bricks in Ghost Grey
in a sponge mortar finish*

Design: TRIAS Studio

Photography: Clinton Weaver



CAPE SCHANK HOUSE

*Krause Standard 76mm Bricks in Ghost Grey
in a sponge mortar finish*

Design: Studio Goss

Photography: Timothy Kaye





Throughout the project, simple forms and carefully refined material junctions create a series of interior spaces that evoke a sense of tranquillity.

The material palette blends seamlessly between internal and external spaces with a sense of permanence evoked through a range of natural materials and textures selected to age and weather gracefully.

— Studio Goss, Architect

THINK
BRICK
AWARD WINNER



BURNT EARTH BEACH HOUSE

Custom-made Krause Bricks and Krause Klad in Terracotta

Design: Wardle

Photography: Trevor Mein



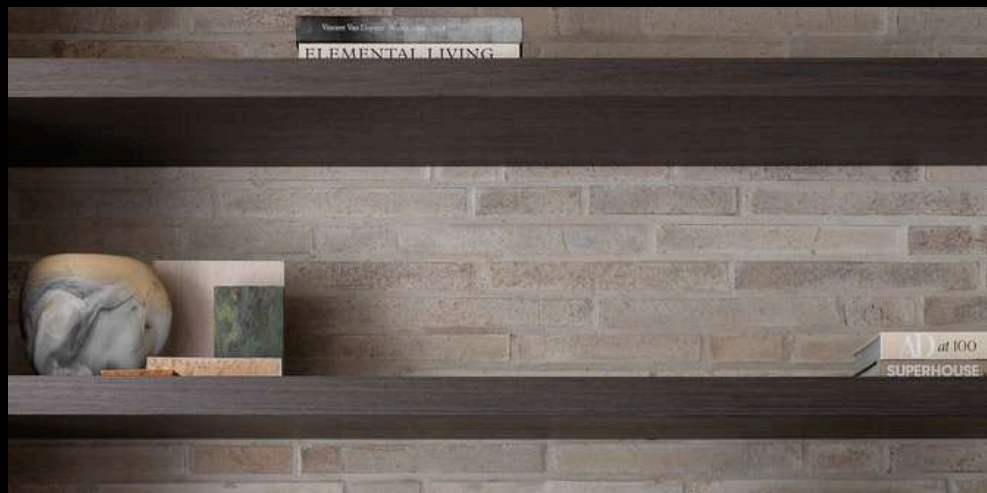
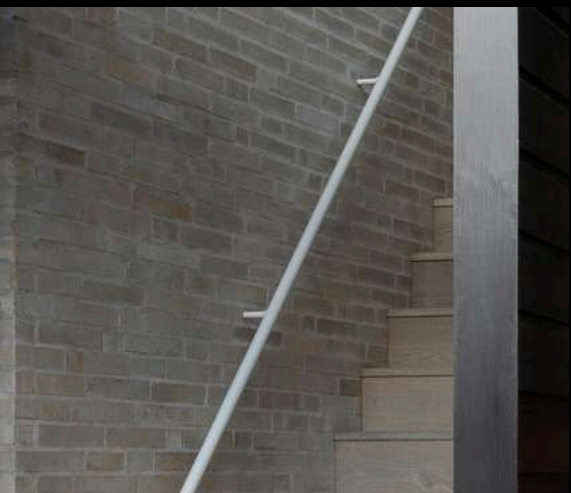
These bricks come out of a massive extruding machine and are torn by hand, so every piece is unique. Any excess is then put back into the process – it's close to a zero-waste product at the manufacturing stage.

A glaze was then applied to the raw material before a single firing, and the various glazes reacted in different ways – some glazes absorbed into the clay while others responded in a liquified manner.

John Wardle, Architect



Krause Kald



BLAIRGOWRIE HOUSE
Krause Emperor Bricks in Ghost Grey

Design: Manna Made
Photography: Timothy Kaye





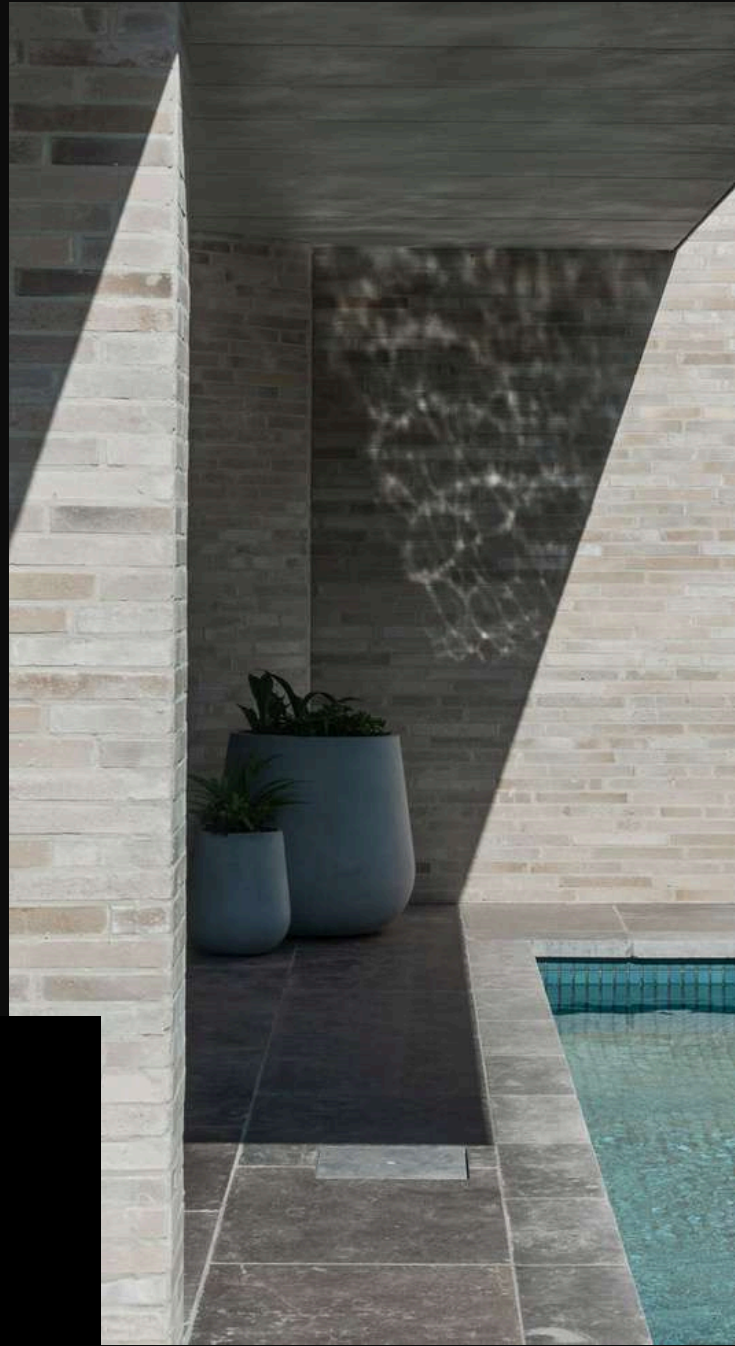
BELLEVIEW HILL

Krause Emperor Bricks in Ghost Grey

Design: Luigi Rosselli Architects

Photography: Tom Ferguson





BAYSIDE HOUSE

Krause Emperor Bricks in Ghost Grey

Design: Adam Kane Architects

Photography: Tom Blachford





BALWYN TENNIS CLUB

*Krause Standard 76mm Bricks in Light Blend
Grampian Blues*

Design: MGS Architects

Photography: Andrew Latreille





ASCOT VALE HOUSE

Krause Emperor Bricks in Grampian Blue

Design: Taylor Knights Architects

Photography: Derek Swalwell





AQUILAM

Krause Emperor Bricks in custom Ghost Grey blend

Design: SJB Architects

Photography: Dan Gosse





SURRY HILLS HOUSE
*Krause Bricks in Sandstone
(multiple formats used)*

Design: Adam Hadow & SJB Architects
Photography: Anson Smart

**THINK
BRICK**
AWARD WINNER



All Krause Bricks are made by hand and can be produced in a variety of colours and textures to suit each individual project.

Visit krausebricks.com for more information and inspiration.



Made in Stawell, Victoria since 1945.

The total end-to-end carbon emissions of every Krause Bricks order is 100% offset.

sales@krausebricks.com

+61 3 5358 1262

krausebricks.com

[@krausebricks](https://www.instagram.com/krausebricks)