

INTERIORS
**CAPABILITY
STATEMENT**

2021



SHEETH

WE SAFEGUARD OUR CLIENTS' ASSET AND
MAKE BUILDING A FULFILLING EXPERIENCE

THE SHEETH DIFFERENCE

01

EARLY CONTRACTOR INVOLVEMENT (ECI)

It is not about stripping design elements from the project; we collaborate with you and your stakeholders to achieve successful outcomes. This offers a faster completion, subcontract transparency and input from us in the early stages when the design is being developed to help avoid potential issues.

03

DEDICATED DELIVERY TEAMS

We keep our team focused on the goal and motivated to do their best to achieve it. The staff at SHEETH have carefully been selected to perform to the highest calibre. We ensure your project is resourced with a dedicated team from start to finish. This allows for a proactive and safe approach to build your project.

02

ACCURATE ESTIMATING & VALUE ENGINEERING

We believe in building value. We want to get to know you, so we can best understand your needs and expectations. This approach seeks to enhance value by eliminating unnecessary cost while maintaining function.

04

QUALITY / SAFEGUARDING OUR CLIENT'S ASSETS

We build trust and loyalty with all our clients and always strive for perfection. Each project is addressed with the highest care and attention. Understanding your needs is our highest priority.

ABOUT US

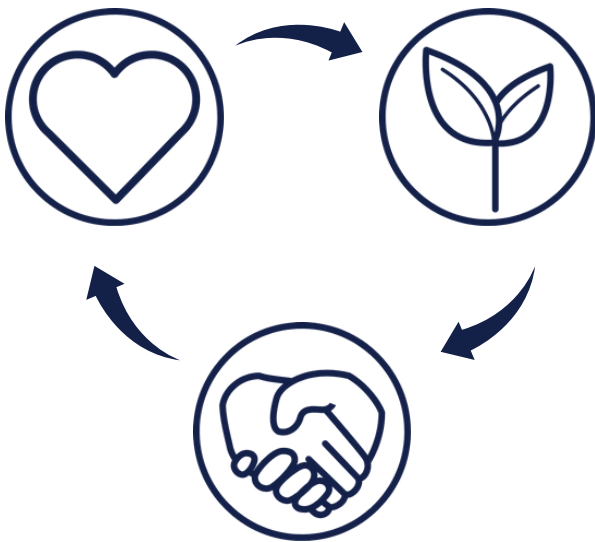
MAKING BUILDING A FULFILLING EXPERIENCE

We are a boutique construction firm with a team that has been building construction, fitout and refurbishment projects since 1988. The construction industry can be complex, but our goal is to make building easy. We will listen to you, add value to your needs, assist with creating your vision and find solutions to potential problems. Our mission is to remove unnecessary stress and safeguard you from the risks in construction, because we genuinely care about your assets.

BUILDING MEANINGFUL RELATIONSHIPS

Through our knowledgeable and dedicated team, this is what we do best. We make building a fulfilling experience.

OUR CORE VALUES



PASSION

Perseverance to be better. Always pushing our boundaries. Ultimate drive for perfection.

PURPOSE

Personal growth & acknowledgment; ambition to achieve & make a difference; a reason for being.

INTEGRITY

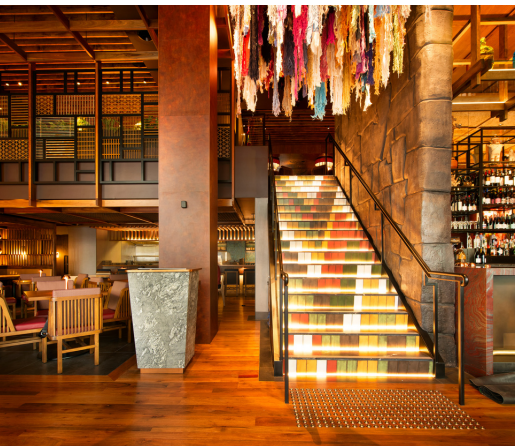
To be trustworthy and respected and always doing what's morally and ethically right.

“These values guide us through each of our decisions and act as a daily reminder of what’s most important to us.”

CAPABILITIES INTERIORS

From the start of the process we make it our business to understand yours

- Hospitality
- Retail
- Office



Our involvement in the Interior Construction sector has further cemented our track record of delivering astounding projects to the highest standards through our experience, vision, commitment and drive. Completing your project to the highest standards is not just about achieving a perfect quality, magazine worthy fitout.

It's about delivering your project ahead of program, on budget and ensuring your needs and wants are always met. We work closely with the architect and designer to fully understand their intentions to bring the concept to reality and our aim is to surpass your expectations and build a project that everyone is proud to have been a part of.



CASE STUDIES



OFFICE

HANNA LEGAL, OFFICE FITOUT

Client: Hanna Legal

Architect: Strutt Studios

Duration: 5 weeks

In 5 weeks, we transformed the leading boutique law firm Hanna Legal into perfection. Together with the designers at Strutt Studios, we created a well-executed design to meet our client's needs and expectations.

By selecting a neutral colour pallet with small pops of colour, Hanna Legal will always look timeless and tasteful. We are proud to have completed Hanna Legal, a high-end Law Firm in the CBD, to the highest standards.

"Our office fit-out is of high quality and surpassed expectations".

- Nick Hanna, Principal



OFFICE

SERVIAN, AUSTRALIA SQUARE

Client: Servian

Architect: Strutt Studios

Duration: 8 weeks

Servian is a high-end office located on level 46 of Australia Square, Sydney. The area of the tenancy is 1200m², with a circular core and a curved building façade.

SHEETH worked closely with structural engineers, architects and clients to achieve a design and finish that would unify the space. The works included demolition of 3 tenancies within the original space and a new fitout; that captured the brand image and employee experience of Servian.



OFFICE

DKO HEAD OFFICE

Client: DKO Architecture

Architect: DKO Architecture

Duration: 4 weeks

SHEETH successfully delivered the refurbishment of DKO Architecture's Head office, housed within a charming converted warehouse on a quiet leafy street in the heart of Surry Hills.

The industrial aesthetic of their new reception creates an inviting and fresh feel, it is cleverly softened with the use of curtains, warm woods, dark accents and greenery. We were thrilled to have the opportunity to complete this beautiful project for such a highly renowned Architect.



OFFICE

VINCENT YOUNG

Client: Vincent Young

Architect: Gray Puksand

Duration: 3 weeks

SHEETH delivered the office fit-out for Australia's highly renowned law firm, Vincent Young in an incredibly fast pace 3 week program. The objective was to maximise the re-use of fitout items retained from their original fit-out, in accordance with their Sustainability policy.

We completed the project re-using 70% of the original tenancies glazing, acoustic wall lining, metal framing, joinery, workstations and furniture. We considered this project a huge success as it was completed in accordance with the program, within budget, defect free and with sustainability as the key objective.





OFFICE

L3, 346 KENT ST, SYDNEY - CBD

Client: Clover Family

Architect: WMK Architecture

Duration: 2 weeks

This beautiful spec fit-out requested by the Clover Family, is located in a heritage building that consists of original and contemporary style finishes.

The works consisted of returning the heritage brick to its original state, repairing of the timber structure ceiling, services install, installation of new flooring, joinery, partitions, glazing and soft furnishings. The project was completed in 2 weeks through the strict programme coordination of trades and suppliers.



OFFICE

DOLBY AUSTRALIA, SYDNEY

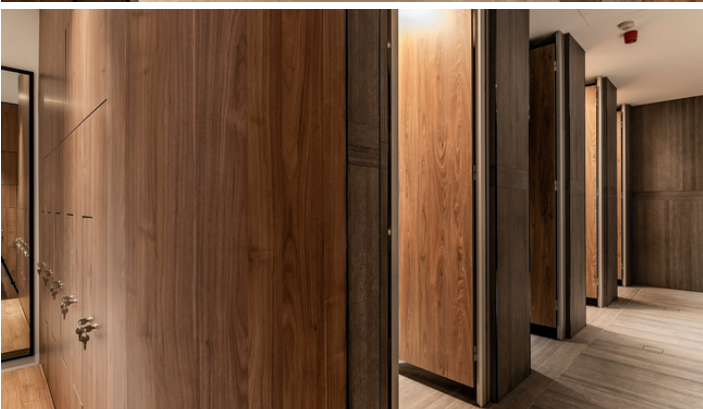
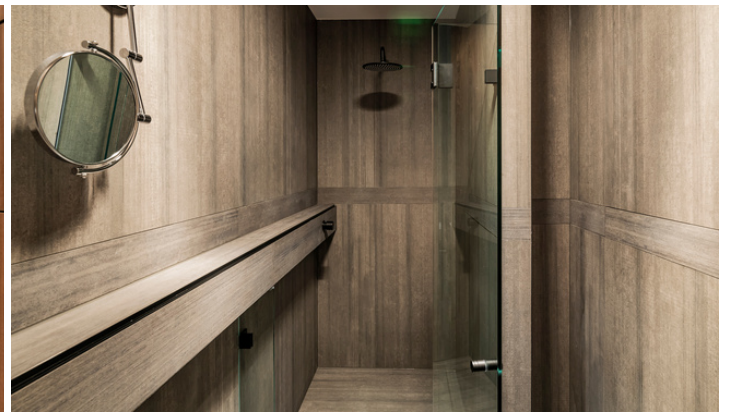
Client: Dolby Australia

Architect: + Spicer Architecture

Duration: 5 weeks

Dolby Australia's stunning End of Trip Facility was inspired by the Scandinavian thermal baths. The SHEETH's team objective was to create a space where employees feel like they're entering a day spa.

The warm walnut timber and concrete look tiles create an atmospheric space, while the gentle curves guide employees through the space. The wonderful use of warm materials and ambient lighting turned this unused dark office, into a warm environment that staff can enjoy.



HOSPITALITY

KURO BAR & DINING

Client: Kuro Bar & Dining

Architect: Henderson & CO

Duration: 12 Weeks

Kuro Bar and Dining was a project completed for SHEETH's repeat client the Clover Family. Once again our team was able to exceed the client's expectations in the delivery of this masterpiece.

Every surface of the restaurant captivates and engages the patron as they travel through the space. A few stunning features of this space include the bar and chefs table made of solid concrete formed by a unique silicon precast method, then adorned with brass inlays.

The hand strung shells that form the 6000 piece chandelier over the kitchen telling the story of a blossom tree. The white and oak timber portals with an endless light stream creating a story of the summer and winter seasons. This fitout was designed and built to evoke luxury and comfort.

Our experienced team were able to complete this vibrant fitout in 12 weeks, while overcoming the hurdles presented when working on a heritage building and difficult site access.



HOSPITALITY

INKA, CANBERRA

Client: INKA Japanese Peruvian

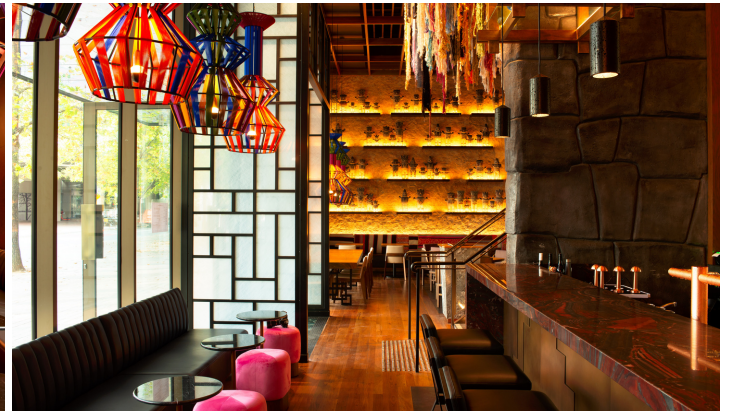
Architect: Studio Barbis

Duration: 5 months

Introducing INKA, a massive 350 m² Peruvian, Japanese fusion restaurant that is going to delight your senses as soon as you enter!

With the use of so many wonderful materials throughout to create an exciting and vibrant fitout; from Astor metal finishes, mosaic tiles, hardwood timbers and exciting Artedomus stones!

Our team is ecstatic with the opportunity to show off our capabilities and deliver this high-end fitout on a very quick programme to the highest standards!



HOSPITALITY

OPERATION ZAATAR

Client: Operation Zaatar

Architect: Strutt Studios

Duration: 4 weeks

It was a great pleasure working on this project with the talented women at Strutt Studios and our client with a strong vision. Its unique concept, forward thinking design and attention to detail makes this place an unexpected jewel.

The stunning Porters Fresco painted walls, paired with the bold wall tile create an environment where the pizza oven not only marries in seamlessly, but also draws your eye and captivates.

"SHEETH Group in 3 words:

Professional, detailed, and courteous."

-Alex Abbas, Director



HOSPITALITY

BLUE LEMON SUSHI

Client: Blue Lemon Sushi

Architect: ORO Design & Architecture

Duration: 4 weeks

It was a great pleasure working on this project with the talented women at Strutt Studios and our client with a strong vision. Its unique concept, forward thinking design and attention to detail makes this place an unexpected jewel.

The stunning Porters Fresco painted walls, paired with the bold wall tile create an environment where the pizza oven not only marries in seamlessly, but also draws your eye and captivates.

"SHEETH Group in 3 words:

Professional, detailed, and courteous."

-Alex Abbas, Director



HOSPITALITY

MANOUSHEH GREGORY HILLS

Client: Manousheh
Architect: Strutt Studios
Duration: 4 weeks

We turned our clients, Manousheh's dreams into a reality! The design team carefully selected every finish to create a warm visual impact that would feel authentic.

We loved building every detail of this stunning restaurant, the recycled "A" Grade brick walls with whitewashed finish, the crisp modern signage, the carefully curated art selection, alongside the warm tones and greenery is a delight to the eye.

**"SHEETH Group in 3 words:
Professional, detailed, and courteous."**
-Alex Abbas, Director



HOSPITALITY

SON OF A BAKER, SANS SOUCI

Client: Son of a baker

Architect: DSJ Projects

Duration: 5 Weeks

SHEETH successfully delivered ahead of schedule the high-end fitout for Son of a Baker, on the shores of Sans Souci.

The results speak for itself, rich chevron floors run through to impeccably finished calacatta bar and pastry kitchen.

Stylish timber moulds finely rest over the natural beauty and charm of Marmorino Venetian Plaster paint creating a truly distinctive and opulent space.



HOSPITALITY

AGAINST THE GRIND

Client: Against The Grind

Architect: Michiru Design Studio

Duration: 4 Weeks

This stunning café is a crowd favourite in the heart of Neutral Bay. We extended this corner café into the neighbouring tenancy and gave the whole place a face lift, adding in the coffee to go window and a new Italian deli.

The Mediterranean theme; terrazzo tiles, terracotta colour pallet and light beachwood furniture creates warming place to grab a coffee. We were able to complete this project in 2 stages to enable our client to continue trading.



HOSPITALITY

KOKU CULTURE

Client: Koku Culture

Architect: Strutt Studios

Duration: 2 weeks

Koku Culture, located in Ashfield was designed and renovated for head chef Kenji Okuda who originally worked at Lotus Barangaroo.

In collaboration with Strutt Studios we created and built a dynamic design for Koku Culture who was on a tight budget and required it to be done in only 2 weeks. This bright and airy store, wanted a minimalist theme, featuring chevron wall tiles, a light beach colour pallet and stunning pendent lights.



RETAIL

BILLINI - WESTFIELD BURWOOD

Client: Billini Australia
Architect: Loopcreative
Duration: 4 weeks

Billini Australia, the runway inspired go-to fashion destination for footwear and accessories. SHEETH are proud to have completed and delivered seven Billini stores, defect free and to the highest standards.

The Billini store in Westfield Burwood was delivered with exceptional attention to detail and proactive approach to program.

The floating polyurethane shelves make the space appear much larger and offer

"Fair in price, deliver on time, have outstanding attention to detail and great to converse with."

- George Khouzame,
Managing Director

an attractive & luxurious way to display their products.

The mix of materials create an amazing look and feel.

- Calacutta Oro
- Brass Metalwork
- Herringbone Tiling
- Suede upholstery





RETAIL

ROMAN DANIELS SUIT CLUB

Client: Roman Daniels

Architect: Be Creative Studio

Duration: 3 weeks

A fitout of Australia's top outfitter for men's suits, Roman Daniels Suit Club. A successful project in collaboration with the lovely architects and interior designers at Be Creative Studio.

The brief was to create a welcoming space that would make the client immediately feel comfortable. With clever designed and executed joinery it creates a smart and crisp display.

"The team at Sheeth understood the importance of working in a live environment"

- Andrew Scarf, Managing Director



RETAIL

MISTER CUTS

Client: Mister Cuts

Architect: 2D Studio

Duration: 3 weeks

Mister Cuts is a playful barber shop that has a fun retro feel in a modern setting. Its mixtape wall paper, the contrast of the exposed brick wall façade and multi coloured panels adds a nice touch to this funky Barber shop.

SHEETH were able to turn around this full fitout in 3 weeks over the Christmas break to ensure they were able to start trading as soon as possible.



RETAIL

HERMOSA MERRYLANDS

Client: Hermosa Hair Specialist

Architect: Strutt Studios

Duration: 4 weeks

Hermosa Hair and Beauty was a wonderfully bright and colourful project for the SHEETH team to work on. With its flowing curves, high quality finishes and hand painted mural, we were able to create a space unique and inviting for Hermosa's clientele.

We had the pleasure of working with great designers on this project, by working harmonically we were able to bring together a truly beautiful project.



RETAIL

BEAUTY AVENUE SYDNEY

Client: Beauty Avenue

Architect: Studio Gestalt

Duration: 4 weeks

The concept behind Beauty Avenue was 'Naturally simplistic beauty', which truly came to life in this space and is a great representation of their brand. Our client wanted to create an experience for their customers, allowing them to step away from their busy lives and be embraced by luxury.

The elegant grey honed stone benchtop, champagne aluminium skirting, handmade wall tiles with Maipei/Jasmine grouting bring this project together perfectly.



RETAIL

OXFORD DFO

Client: Oxford Shop

Architect: Sassine Designs

Duration: 3 weeks

We had the pleasure of working on this project for Oxford. Our team was able to form a strong relationship with a new client to ensure we were able to secure future works with Oxford.

Brand identity was very important to the client, ensuring we delivered a project that was recognisable and flawless was essential. The suspended ceilings conceal the structure above, improve the appearance of the room as it delivers both practicality and style.



RETAIL

HRUR HRUR

Client: Hour House

Architect: Henderson & Co.

Duration: 4 weeks

SHEETH completed this luxurious fitout for Hour House, located in the heart of Sydney's Central Business District in 4 weeks. In collaboration with the talented architects at Henderson & Co., we achieved a fitout that was both sophisticated and stimulating.

This space offers a well-considered design where materials and finishes were thoughtfully selected to create a modern and cultivated space.



RETAIL

SHOEGRAB BANKSTOWN

Client: Shoegrab

Architect: The Bold Collective

Duration: 4 weeks

The folded metal stairs in Shoegrab's red brand colour is a truly a show-stopping statement piece. The new mezzanine level space created to display their premium selection, featuring a podium with a mesh backing frame and large halo pendant. The black metal shelving and concrete wall finish throughout creates a raw industrial look that compliments Shoegrab's brand and their products. The Bold Collective's and the clients amazing design of the feature angled portal and eye-catching timeline graphics tells the story of the brands milestones and creates a substantial impact on entry to the store.



RETAIL

EMINENCE BEAUTY

Client: Eminence Beauty

Architect: BC Studios

Duration: 3 days

A beauty salon lacking some tender, love, and care was treated to a much needed face lift featuring solid brass joinery, crystal pendants, timber mouldings and a spectacular Calacatta feature wall. By updating to a monochrome aesthetic, the visual impact of the store now represents the brands luxury. Our specialised team we were able to transform this stunning space in an impressive 3 days!



COMPLETED PROJECTS

SELECTION OF COMPLETED PROJECTS AT SHEETH

Servian, Australia Square, CBD - \$1.3m

High-End 1200m2 office fitout, designed by Stutt Studios.

Strathfield Library - \$1.8m

2000m2 Library fitout, designed by Studio Hollenstein.

Croydon Dentist - \$xxxk

Dentist fitout, designed by i2C.

Hanna Legal, CBD - \$490k

High-End detailed office fitout, designed by Strutt Studios.

Endeavour Sports High School - \$150k

Education fitout, designed by Studio Hollenstein

Kuro Bar & Dining – \$1.8m

High-End detailed office fitout, designed by Strutt Studios.

Oxford Shop – \$300k

Commercial fitout, designed by Sassine Designs.

346 Kent St, Sydney - \$150k

Office fitout, designed by WMK Architecture.

364 Kent St, Sydney - \$552k

Office fitout, designed by Strutt Studios.

Platino Head office – \$300k

Office fitout designed by Bokor Architecture + Interiors.

Campbell Arnott's - \$230k

Office fitout, designed by SHEETH.

Richemont Head Office - \$255k

Office fitout, designed by Gray Puksand.

DKO Head Office – \$400k

Office Fitout designed by DKO Architects.

Beauty Avenue – \$200k

Commercial fitout designed by Henderson & CO.

Son of A Baker, Multiple projects - \$310k

Commercial fitout, designed by DJS Projects

33-35 Sydney St – \$166k

Warehouse Fitout, Designed by SHEETH.

Challis Ave, Potts Point - \$105k

Foyer Fitout, designed by Katie Uther Design.

LUXE Group, Bondi Junction - \$260k

Commercial fitout, designed by Be Creative Studios.

Vincent Young - \$73.5k

Office fitout designed by H&E Architects.

Billini Kotara, Bankstown, Narellan, Burwood - \$465k

High-End commercial fitout, designed by Loopcreative.

HLB Mann Judd, CBD - \$200k

Office fitout designed by WMK Architecture.

Hermosa, Newcastle - \$220k

Hairdresser fitout, designed by Naja Architecture.

BaptistCare Angus Bristow Village - \$140k

Aged Care refurbishment, designed by Planix Projects.

BaptistCare Willandra Village - \$138k

Aged Care refurbishment, designed by Planix Projects.

BaptistCare Shalom Landscaping - \$223k

Aged Care refurbishment, designed by Planix Projects.

BaptistCare DHL Units - \$415k

Aged Care refurbishment, designed by Planix Projects.

Anglicare External works - \$43.5k

Aged Care refurbishment, designed by Planix Projects.

JK Florist, Mt Druitt - \$114k

Commercial fitout, designed by Be Creative Studios.

RATCH Australia - \$220k

Office fitout designed by Strutt Studios.

SHASHI Beauty Salon, Blacktown - \$126k

Commercial fitout designed by Archizone PTY LTD.

Super Noodles Burwood - \$80k

Commercial fitout.

Roman Daniel's - \$125k

Commercial fitout designed by Be creative Studio.

Griddle Rouse Hill - \$130k

Commercial fitout, designed by Sam Naja Architect.

Operation Zaatar - \$140k

Commercial fitout, designed by Strutt Studios.

Hermosa, Merrylands – \$150k

Hairdresser, fitout designed by Strutt Studios.

PROJECT EXPERIENCE

SELECTION OF EMPLOYEE PROJECT EXPERIENCE

H&M – Macarthur Square, 9 weeks, 3000m2

Commercial fitout, designed by WMK Architecture

H&M – Wollongong, 10 weeks, 2000m2

Commercial fitout, designed by WMK Architecture

Zara Retail Store, Sydney

Commercial fitout, designed by Bokor Architecture

12 Micron – Barangaroo NSW, 16 weeks

Commercial fitout, designed by Dixon Hospitality

Coogee Bear Childcare Centre, Coogee, 6 weeks, 300m2, \$350k

Childcare Centre fitout, designed by OAC Architects

Rooty Hill RSL Club Refurbishment, 5 months, \$3m

Commercial fitout, designed by Altis Architecture

Nick's Seafood – Cockle Bay Wharf, NSW, 3 weeks, \$1m

Hospitality fitout, designed by Dino Raccanello Design

Abode Restaurant, Parkroyal Hotel, Darling Harbour, 9 weeks, 600m2

Hospitality fitout, designed by Forward Thinking Design

Manly Phoenix Chinese Restaurant – The Corso, Manly NSW, 8 weeks, 1m

Hospitality fitout, designed by Group GSA

Manly Phoenix Chinese Restaurant – Westfield, Parramatta NSW, 8 weeks, 3m

Hospitality fitout, designed by Group GSA

Campbell Arnott's Multifunctional Facility, 12 weeks, \$1.3m

Commercial fitout, designed by, Group GSA

Nick's Café & Bar, COCKLE BAY WHARF, 10 days, \$400k

Hospitality fitout, designed by Dino Raccanello Design

DHL Huntingwood, 12 weeks, 2000m2

Architect: Watch This Space Design

HCF Erina fair, Erina, 4 weeks, 80m2, \$250k

Commercial fitout

HCF - Melbounre, vic, 4 weeks, 80m2, \$240k

Commercial fitout

AMP Lessor Works for Chipmunk's, MACQUARIE CENTRE, 3 weeks, \$200k

Commercial fitout, designed by AMP Architecture

Chipmunk's Playland & Café, MACQUARIE centre, 4 weeks, 600m2, \$350k

Commercial fitout, designed by AMP Architecture

Beehive Childcare Centre – St Ives, 18 weeks (Staged), \$1.5m

Childcare Centre fitout, designed by Ray Fitzgibbon Architects

Only About Children Childcare - Norton Plaza, LEICHHARDT, 8 weeks 900m2, 1.8m

Childcare Centre fitout, designed by 4D Architecture and Design

WE GENUINELY CARE ABOUT OUR CLIENTS

75%

REPEAT CLIENTS

92%

CLIENT SATISFACTION



It is our goal to continuing to listen to our clients, add value to their needs, assist with creating their vision and find solutions for their problems.



TESTIMONIALS



"We had a great experience with Sheeth team. With professional service, friendly communication and attention to details allowed us to be able to complete the whole construction in a tight time frame.

We are also delighted with the high standard result the team has produced with zero defect."

- Sean B Cui, Administration



"Sassine Designs were very happy to work with SHEETH on the delivery of several Oxford Stores across Sydney.

Their constant communication ensured that all fitouts were completed within budget, ahead of time and to the high standard we expect. It was a pleasure to work with SHEETH and we look forward to working with him again."

- Neil Sassine, Director

HOME OWNER

"The team at SHEETH delivered a stunning beautiful house for me and my family. The team was very involved in the project and ensured every detail is perfect. They were very open with the entire process which made us feel comfortable in working with them. I am very thankful for the amazing house they have built for me and would refer them to all people I know. Thank you."

- Michael Ren, Home owner



"HLB Mann Judd engaged SHEETH on recommendation from our architect for our recent office refurbishment. The SHEETH team were very friendly, honest and easy to work with throughout the project. Their time, patience and industry experience were very helpful in guiding us through the decision process.

SHEETH kept us informed and up to date with timelines and schedules and would answer any question, no matter how small, with ease. I would happily work with SHEETH on future projects."

- Romana Mirabelli, Project Coordinator



CONCRETE JUNGLE

"A BIG thank you to the team at SHEETH. The team managed the construction of Concrete Jungle with openness, energy and certainty. They were helpful in offering advice and options in the design process, and always ensured our vision came first. SHEETH delivered on a tight time frame and to a very high standard. I would not hesitate to recommend them to anyone looking to build a high-quality project."

- Maxx Eddine, Director



TESTIMONIALS

KATIE UTHER DESIGN

“Right from the start SHEETH showed professionalism and genuine enthusiasm for my design project. They are the type of builder who do what they say they are going to do and get on with the job. This is just the reliability and reassurance you need as a designer to have confidence the design on paper will transform accurately to reality. Not to say there weren't the unforeseen challenges that typically arise in a project.

The whole team however demonstrated creative problem solving and absolute invested commitment to realise the design intent to satisfy myself as the designer and the client as the end user. It was a joy working with SHEETH. I do not hesitate in recommending them and look forward to future collaborations.”

- Katie Uther, Director



“Our office fit-out is of high quality and surpassed expectations. The pricing was reasonable, and all deadlines were met or bettered. Sheeth always acted in our interests and assisted greatly with information and ideas, whenever there was a choice or decision to be made. The attention to detail, patience and co-operation made our dealings with Hussein a pleasure. We highly recommend Sheeth for any project requiring efficiency, trust and resolution of complex problems.”

- Nick Hanna, Principal

STRUTT STUDIOS

“Strutt Studios has had the privilege of collaborating on over 15 projects with SHEETH across the last 12 months. As a company, we find that our core values align strongly with SHEETH's and most importantly, we find SHEETH to be authentic in everything that they do.

From the head of the company and throughout, SHEETH's team members are trustworthy and humancentric. SHEETH prides themselves on their ability to problem solve, and through our experiences we have noted that never has a potential issue become a 'problem' because of SHEETH's diligence and exceptional project management abilities.

As a designer I have extreme confidence in SHEETH to deliver a project's design intention. On top of this, SHEETH are often respectfully suggesting clever ways of bringing our ideas to life through budget management and construction methodologies. Our projects with Sheeth are truly a collaboration because of their passion for finding the best result for each and every client.

We have seen this mutual respect evident in all of SHEETH's relationships from clients to subcontractors to suppliers. This is why we never hesitate to recommend SHEETH for any job, big or small, as we know that every project is equally as important to them. The Strutt team eagerly looks forward to the many more projects working with SHEETH across many more years to come!”

- Sophie Bowers, Director



TESTIMONIALS

B I L L I N I

"We had such a wonderful experience working with SHEETH that we have recommended them to anyone that asks. I meet with SHEETH once, gave them my budget and requirements for the project and he delivered without an issues or complications, SHEETH as a company is Fair in price, deliver on time, have outstanding attention to detail and great to converse with."

- George Khouzame, Managing Director



"SHEETH Group in 3 words – Professional, detailed and courteous.

Professional – Excellent service starting from the planning stage to the management of our job. No request was too difficult, and the feedback was all in good faith and best for our business's interests.

Detailed – From the joinery to the stitching in the upholstery, every inch of detail was accounted for and perfected.

Courteous – Extremely considerate and generous with their time and efforts. The many after hour meetings, phone calls and site visit on short notice had always been prompt and generous.

I am now committed to SHEETH Group and would want every future job of mine to be built at this level of standard. I highly recommend this company to any business that needs a builder as creative as their business is."

- Alex Abbas, Director



"The team at SHEETH understood the importance of working in a live environment and went above and beyond to protect the stores stock while construction continued. The team were clean and organised, providing a safe working environment where we could continue trade as usual and clients felt comfortable entering and shopping in the store. The guys were very flexible with timing and were always able to meet our needs. I look forward to working with the team again soon."

- Andrew Scarf, Managing Director



"The team at SHEETH have been a pleasure to work with, their dedication, honesty and understanding of working within a corporate environment are a few of the reasons why we have continued to engage them across a variety of construction projects. I would highly recommend them and look forward to continuing our professional relationship."

- Alex Vatsaklis, Building Services

CLIENTS

We've had the pleasure of working with some truly outstanding businesses and clients over the years. Check out a few of our past clients below.



Studio Hollenstein

B I L L I N I

servian_



vincent | young



STRUTT STUDIOS



EMINENCE BEAUTY

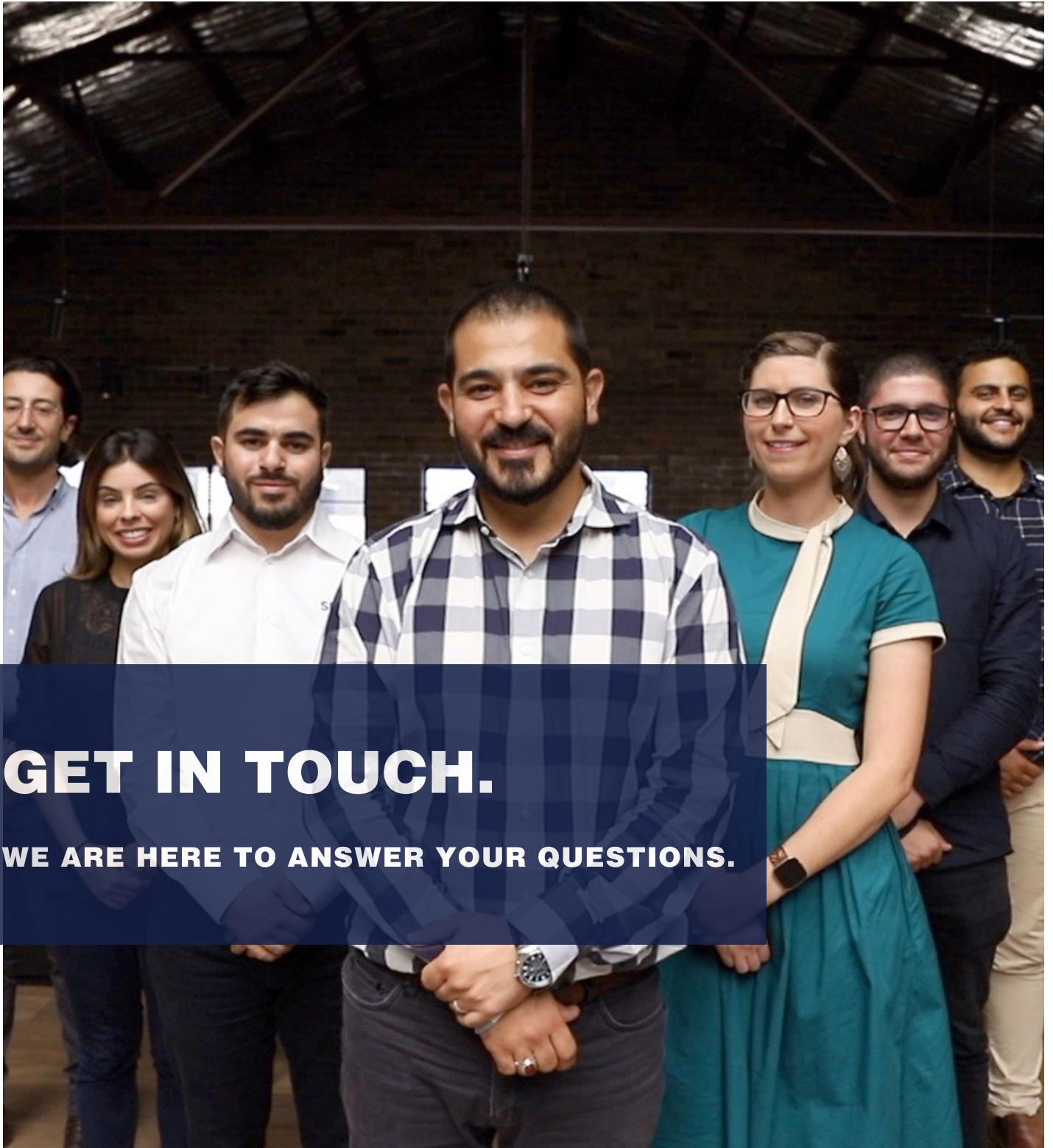


KATIE UTHER DESIGN





Construction ■ Fitout ■ Refurbishment



82 Meeks Road
Marrickville 2204 NSW

ABN 11 159 003 193



www.sheeth.com.au ■ 02 9592 1611 ■ info@sheeth.com.au