



RESIDENTIAL

Studio Profile

SKILLS & EXPERIENCE

Core Services

RESIDENTIAL ARCHITECTURE
SMALL COMMERCIAL ARCHITECTURE
INTERIOR DESIGN
DESIGN MANAGEMENT

Additional Services

Space Planning
Furniture Procurement & Design
Cabinetry Design
Graphic Concepts
Signage details
Fittings & Fixtures
Colour Consultation
Accessorising



Angelique Perak

ARCHITECT & INTERIOR DESIGNER

RAIA ACA

NOMINATED ARCHITECT: NSW ARB #11018

MDIA INTERIOR DESIGN

Studio Duo is led by Angelique Perak.

Angelique completed her Architecture Degree in New Zealand prior to moving to Australia. Her career has lead her to extend her skillset to include Interior Design. Her experience includes working within boutique design firms, working on a broad range of projects in New Zealand, Australia and China. Her career also included seven years at Westfield as a Retail Design Manager.

2014 saw Angelique opening her own design studio, Hither Consulting. A creative problem solver, she is energised by working with people and their businesses to guide projects from concept through to fruition. Her work includes residential projects, office space, retail and restaurants. Combining her skill sets of Architecture and Interiors, Angelique's focus is on creating a harmonious result for her clients with a particular focus on home design.

After eight years leading Hither Consulting, Angelique rebranded in mid 2022 to become Studio Duo.

This encapsulates the synchronicity between Architecture and Interiors, whilst also speaking of the synergy with her clients in a collaborative approach to design.

Angelique is a Registered Architect with the NSW Registration Board, an Accredited Interior Designer with the DIA and a professional member of the RAIA and ACA.

MELALEUCA HOUSE

ACCOLADES

- 2018 HIA Hunter Bathroom of the year
- 2019 TIDA Designer Bathroom of the year
- 2019 TIDA Highly Commended Kitchen Design
- 2019 HIA People's Choice Home of the year

PUBLICATIONS

- Trends Ideas Sept 2019 - Fresh Outlook
- Trends Ideas Dec 2019 - Seaside Kitchen

This waterfront family home on the beautiful Central Coast of NSW was completed in collaboration with Walter Barda Design. We were engaged to carry out full detailed design, interior design, coordination and site management. We provided the client with a comprehensive package including selections, scheduling, site detailing, joinery design, furniture selection and procurement.

This project created a new, relaxed beachside home, celebrating natural materials and authentic moments for a young family and their friends. Layered textures enhance the carefully selected collection of new, vintage and custom made joinery and furnishings to give a warm charm to this coastal home.

We were engaged to work in collaboration with the Lead Architects during the project to enrich the relationship between the overall architectural design and the joinery, finishes, detailing and furnishings. Our role included liaison with and coordination of lighting, AV, automation and joinery as well as the selection, scheduling and procurement of furniture, décor and artworks. The seaside environment and demands of a young family were carefully considered. Our client has a keen interest in design and had a desire to be involved in all aspects of the project. Clear communication with the client was essential to ensure an understanding of the impact of variations, lead times and outcomes throughout the construction and procurement phases. Bespoke elements such as commissioned stained glass and custom staircases add to the tapestry of this authentic space. Our collaborations with the Architects and landscape designers were critical in the success of creating an oasis for the family, which offers them privacy whilst enjoying the seaside vistas around them. Contextual design, passive solar design and cross ventilation principles create a comfortable and efficient atmosphere throughout the whole day. The interior decoration and design extends this ease of use and comfort for those living here.

▼
IMAGE NO 2
Main Bedroom Balcony

▼
IMAGE NO 3
Main Ensuite



▼
IMAGE NO 1
Main Kitchen

▼
IMAGE NO 4
Open Riser Staircase



▼
IMAGENOS
Laundry and Mudroom



The tones and textures of the surrounding environs are reflected in the external finishes and furnishings whilst the interior provides a restful oasis from the clients busy work schedule. In order to achieve a relaxed and liveable family setting, pieces were sought from Australia and abroad to bring together a timeless design with authentic materials. Antiques were carefully selected to add a history to the space whilst maintaining the light and carefree environment. Recycled timber and locally sourced stone enhance the regional authenticity of the spaces whilst reducing the embodied energy of imported materials. Local artisans were also engaged for key aspects of the home to create unique elements whilst supporting the local creative community. The spaces make effective use of cross ventilation and passive heating opportunities with sun-drenched northern courtyards, sun filtering natural fibre blinds and intelligent control systems.

This home has been designed with the future in mind; spaces allow for the adaption of space in the future as the children mature and older generations may join the family. Clever design means the functionality of the spaces enhance the ease of use of the home. Work and study areas were integrated into family zones to allow for groceries to be ordered and homework to be done whilst in the kitchen. Storage and technology are incorporated in a discreet way in order for the space to be tidied and tech-free family time enjoyed with the minimum of effort.



▼
IMAGE NO 6
Level 2 Cosy Room

Photography: Justin Alexander

OUR WORK

WAMBERAL VALLEY, NSW

LILYFIELDS HOUSE

ACCOLADES

2020 TIDA Highly Commended Kitchen Design

2020 TIDA Highly Commended Home Interior Design

PUBLICATIONS

Trends Ideas July 2020 - Home on the Range

The client's brief was to complete the detailed design, selection of finishes, fixtures and fittings for their contemporary Australian Farmhouse.



▼
IMAGENO1
Main Kitchen

▼
IMAGENO2
Entry Gates & Signage

We were approached by the client when this house had just received a DA to assist with the design refinement and development of the concept. This involved the submission of a revision to the DA, coordination of landscape and pool design, detailed joinery and custom furniture design. The total package was completed with furniture and accessory selections and installation for their contemporary Australian farmhouse to be ready for the family to enjoy.

The home nestles into the landscape of a sun-drenched valley on the Central Coast. Pathways of recycled sleepers and cobblestones lead to terraces of sandstone and connect to the hardwood verandahs with long gentle stairs. Inside the generous planked front doors, a wide hallway leads to a mudroom and office space with feature hardwood barn doors and recycled brick walls adding to the layers of texture and a mix of natural materials.

The aim throughout the home was to achieve spaces that felt relaxed and unpretentious without clutter, resulting in a timeless elegance that has gentle warmth. The kitchen is the heart of the home and has strong visual connections to the dining, living, alfresco and pool areas. The materials used echo the client's yearning for an authentic space. Natural fibres and

▼
IMAGENO3
View through to Living Room

▼
IMAGENO4
Pool Area



textures feature throughout. Recycled timber elements and hints of vintage textures such as the handmade tiles and iron pendant lights add authenticity to its simple layout.

A children's study zone is incorporated at the end of the kitchen and beyond the recycled barn doors hides a scullery and butler's pantry. Device free dinner time is made easier with an integrated charging drawer in the scullery, which also hides a second dishwasher and sink. This kitchen captures the essence of the home; a place for family and friends to relax and enjoy time together, with views out across the beautiful landscape.

Photography: Mike Bell - Raw Life Studios

▼
IMAGE NO 5
Main Ensuite



▼
IMAGE NO 6
Main Bedroom



▼
IMAGE NO 7
From the firepit

▼
IMAGE NO 8
Alfresco

Farmhouse style meets modern functionality

This connection continues throughout the bedroom zones, which is the perfect nod to the family's strong ties with the land. High ceilings and soft textures play with the natural light. Feature bedside lights by Anchor ceramics are draped over custom made brackets, and beautiful timber and leather toggles feature on the Heatherly Design Bedhead. The Main bedroom suite is completed with the soft silk texture of the elegant quartz bath and basin against recycled hardwood joinery. Low windows again connect the private spaces to the landscape. This house has provided the owners the retreat they were after to connect with family and their surroundings on a daily basis.

▼
IMAGE NO 9
Herb courtyard



OUR WORK

VERMONT TERRACE

ACCOLADES

- 2022 BDAA Sydney Regional Design Awards Winner - Heritage Buildings
- 2022 BDAA Sydney Regional Design Awards Winner - Residential Interiors
- 2022 BDAA Sydney Regional Design Awards Winner - Residential Alterations
- 2022 Houses Awards - House in a Heritage Context
- 2022 TIDA Highly Commended Kitchen Design

PUBLICATIONS

Australian House & Garden - July 2022

Located in one of Sydney's most iconic heritage precincts, this terrace house originally built in the 1890's has been restored and transformed into a contemporary family home. Sitting proudly, the interiors unfold to reveal a harmonious blend of old and new. Celebrating the rich tapestry of the Millers Point history.

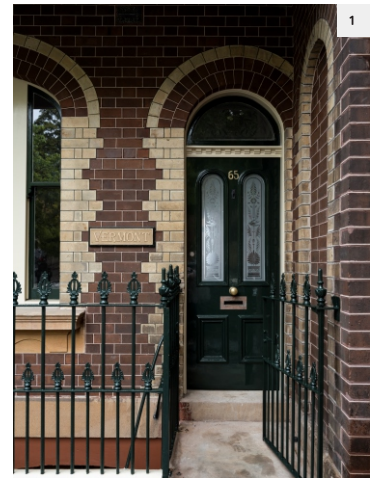
Our long-standing client gave us the early privilege of being part of the process of searching and purchasing a heritage property. This unique opportunity allowed us a high level of engagement from very early in the project.

The Vermont Terraces were an intact and rare example of a pair of early Federation Queen Anne style terrace dwellings. A State Heritage designated site can come with its own challenges, however this is where the opportunities arose. Working with the original heritage fabric to restore and celebrate its history, whilst developing spaces, facilities and technologies to suit the lifestyle of a modern family with four children. Considerations included increasing the cross-ventilation and natural daylight to the Lower Ground level by the widening of the doorway to the kitchen. The ability to remove the later added timber flooring at the lower level (under archaeologist supervision) allowed the addition of subfloor ventilation and hydronic heating.

Lath and plaster walls, plaster detailing and tuck-point details were restored using minimally invasive techniques. Reimagining previously lost details using old techniques included sandcasting the house plaque and a custom-made modern interpretation of a washstand. A carefully incorporated additional bathroom on Level one increased the amenity for the family.

▼
IMAGE NO 1
Lower Fort Street Entry

▼
IMAGE NO 2
Kitchen



▼
IMAGE NO 3
Main Bedroom Verandah

▼
IMAGE NO 4
Dining Room

▼
IMAGE NO 5
Courtyard

IMAGE NO 6
Living Room



IMAGE NO 7
Games Room



Managing the functional requirements of a modern family by adapting a space whilst maintaining a reverence to the significance of a heritage dwelling requires delicate balance. The reuse of materials, maintaining them onsite under heritage guidance, offered opportunities to re-imagine them in useful, relevant forms. Flagstone paving was lifted, numbered cleaned and replaced. The bricks from the base that had once cradled the laundry copper, were reused to provide an extended garden edging. Here children can sit under the shady Honey Locust tree in the courtyard. Collaboration with the landscape designer led to the remnant servants ladder stringers from the light-well being used to hang pants from, with integrated copper irrigation.

The incorporation of effective cross ventilation and landscaping that enhanced the enjoyment of the urban laneway were key. This was balanced with the incorporation of modern air-conditioning, automation control systems and insulation without degrading the heritage fabric.

Australian lighting, artwork and furniture is featured within the selections alongside key items from overseas. Thus, celebrating the unique history of the house and indeed it's original fixturing. The family who built the house, were jewellers who had travelled enroute from Ireland. Door hardware and window locks, once cleaned and restored were discovered to be from the United States. To celebrate its rich history, articles from circa 1880 were chosen to sit alongside more modern and timeless classics, including the restored wall clock and a sextant. An antique Flavelle Brothers token penny and other items that were found on site were carefully framed by an archival framer. The history of the house, its owners, the Millers point precinct and Sydney are celebrated throughout the house with a carefully curated series of photographs printed on cotton rag, all retrieved from both City of Sydney Archives and the National Library of Australia.

OUR WORK

8



9



IMAGE NO 8
Anteroom

IMAGE NO 9
Main Bedroom

Photography: Brigid Arnott

▼
IMAGE NO 1
Front entry pergola



▼
IMAGE NO 2
Up the path from the beach



PEARL BEACH, NSW

GEM HOUSE

PUBLICATIONS

Hunter & Coastal Lifestyle Summer 2020

This beachfront renovation transformed a home that had been partially renovated previously into a beautiful, relaxing holiday home for a couple, their adult children and ten grandchildren.

Beachside homes with a northerly aspect are rare on the Central Coast. But this house at Pearl Beach has even more to offer: facing north, it sits behind a headland that keeps the often stiff easterly winds at bay and protects the beach, making it a perfect place for a swim in calm ocean waters. It is one of just six houses in the area that have this perfect trifecta of location, orientation and protection.

From the moment you enter through the gates, this transformed space is all about genuine materials and texture. The filetti cobblestone driveway is planted with soft mounds in a playful hopscotch to the front door. We were approached by the client to convert this hit and miss renovation into a harmonious space, fit for the whole family. With new floors and finishes throughout, we transformed the house into a family oasis. A quiet getaway with spaces and moments for the whole family.



▼
IMAGE NO 3
View to the beach



▼
IMAGE NO 4
Main Living Room

IMAGE NO 5

Childrens sleepout and games area



5

IMAGE NO 6

Kosher Kitchen

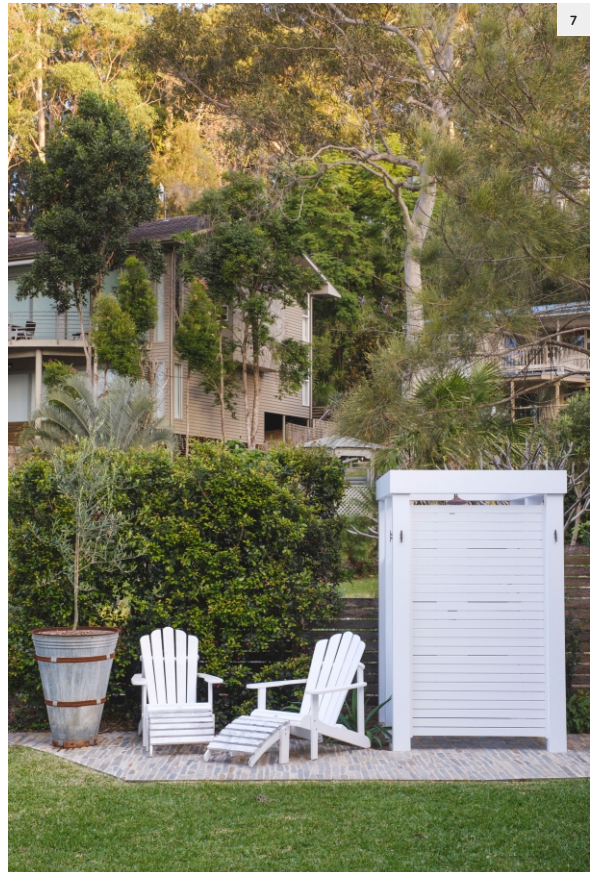


6

PEARL BEACH GEM

IMAGE NO 7

Shower with a view



7

Wasted larders and passageways were adapted to provide the extra space needed for a Kosher kitchen.

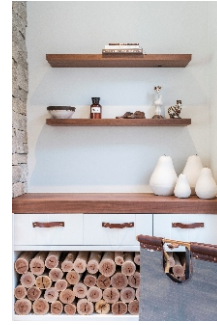
A new sleepout space that can sleep more than 6 children in custom bunk beds was created with its own sitting room complete with an imported giant scrabble board.

Safety was also key with a pool gate latch and brass mesh keeping the littlest grandchildren from wandering down to the water.

The clients have repeatedly remarked on their happiness at the end result, a quiet place to get away from it all.

OUR WORK

Photography: Mike Bell - Row Life Studios



“Angelique has a passion for enduring design and a relentless eye for detail. Understanding her client's brief is achieved by observing, listening, and offering considered suggestions and well-articulated designs. We have had the privilege of completing two residential projects with Angelique and love being in the spaces and living environment of both homes.”

Andrew & Bec Mann
Residential Client

“A consummate professional. Combining architectural and interior design skills who is able to lead and guide clients to their most comfortable and desired outcome.

Angelique is practical and personable. Long after the project was completed the pleasure of working with Angelique lingers with her feeling she's only a call away if one needs her guidance advice or help.”

J. Gavshon
Residential Client



“Having worked with Angelique previously we gained the trust for our projects. Angelique developed a concept for us - operating with a clear vision of what we are creating. Stores are now built and the concept has become reality. Fantastic to work with someone who we can trust to listen, create and be as dedicated to a project as we are.”

Justin Barrett
Director - Barrett Shopfitting
(Project Manager & Shopfitter for Angus & Coote, Goldmark and Prouds brands)



CALL ANGEЛИQUE ON 0409 777 968