



Catalogue

Q4 2023

solutionair Catalogue

High Performance Solutions for New Zealand



Your Expert for Ventilation, Heating and Cooling

Located in Auckland, we offer advanced ventilation, heating & cooling products from selected international brands for the New Zealand market.

For residential or commercial HVAC projects we offer consultation, planning and customised solutions. Please feel free to call us or send us an email with your requirements.

Phone **0800 484 3269**
Email enquiries@solutionair.co.nz



Extraction & Supply Fans

- Bathroom Fans
- External fans
- In-Line Fans



Ventilation Systems

- Decentralised Units
- Centralised Units



Ducting Systems

- EPP - Ducting
- BlauFast Air Distribution System
- Air Valves / Vents
- Silencer
- Information on MVHR Installations



Hydronic Fan Coil Units



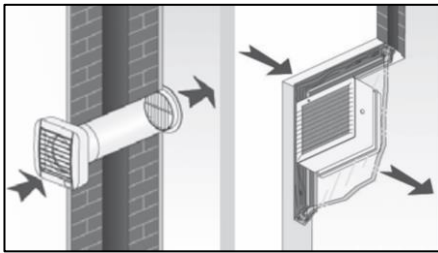
Hydronic Heat-Pumps

Choosing the right fan



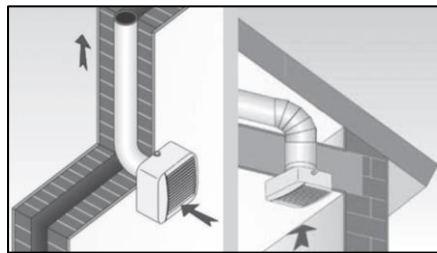
Axial Fans

Axial fans are designed to extract large volumes of low pressure air directly to the outside and over short distances. Maximum duct length is 3m.



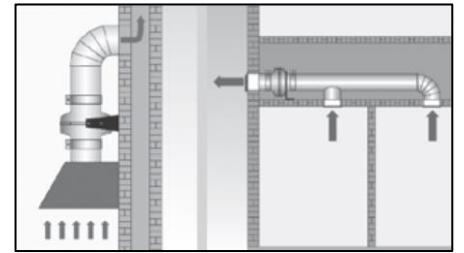
Centrifugal Fans

Centrifugal fans are designed to extract air over long distances and to overcome the resistance of long and curved ducting.



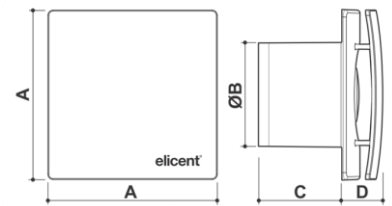
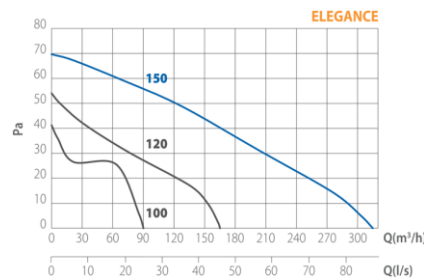
Mixed-Flow Fans

Mixed flow fans are a combination of axial and centrifugal fans, designed to overcome moderate lengths of ducting while still moving large air volumes.



Elicent Elegance 150

- Axial extraction fan
- High airflow
- Slim & sleek design
- For 150mm ducts
- Wall or ceiling mounted
- Duct length up to 3m
- With backdraught shutters



A	ØB	C	D	kg
200	149	105	56	1.3

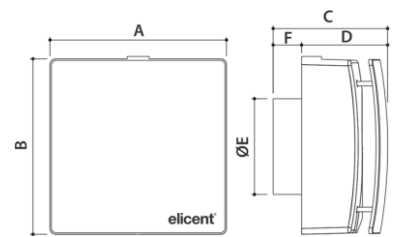
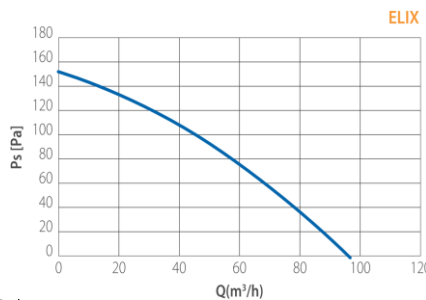
m³/h	l/s	Pa	W	dB(A)
315	87	70	25	43.9

Acceptable solution G4/AS1 and NZ Healthy Homes Standard



Elicent Elix 100

- Centrifugal extraction fan
- High pressure
- For 100mm ducts
- Wall or ceiling mounted
- For longer duct runs
- With backdraught shutters
- With washable filter



A	B	C	D	ØE	F	kg
180	180	116	87	99	29	2.6

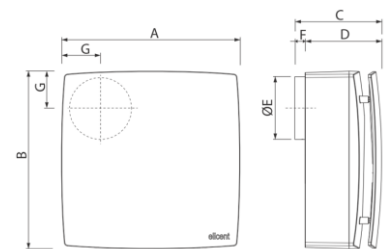
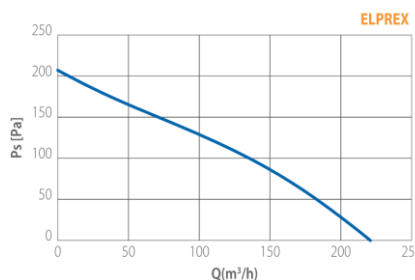
m³/h	l/s	Pa	W	dB(A)
97	27	151	29	42

Acceptable solution G4/AS1



Elicent Elprex 100

- Centrifugal extraction fan
- High airflow and pressure
- For 100mm ducts
- Wall or ceiling mounted
- For longer duct runs
- With backdraught shutters
- With washable filter



A	B	C	D	ØE	F	G	kg
280	280	135	120	99	16	58	2.8

m³/h	l/s	Pa	W	dB(A)
221	61	208	29	41

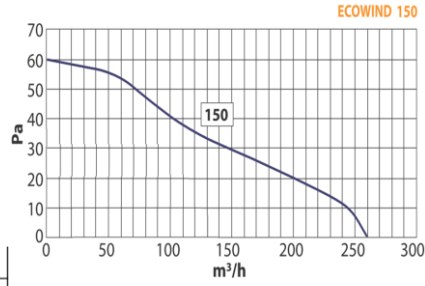
Acceptable solution G4/AS1 and NZ Healthy Homes Standard



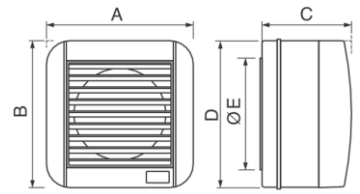
Elicent Ecowind 150

- Axial extraction fan
- High airflow
- For window installations
- Automatic shutter
- Max. glass thickness 22mm

m ³ /h	l/s	Pa	W	dB(A)
260	72	25	60	51



Acceptable solution G4/AS1 and NZ Healthy Homes Standard



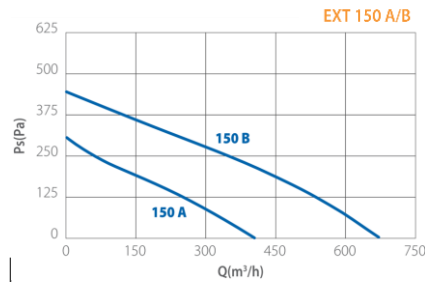
A	B	C	D	ØE	kg
209	209	147	208	175	1.4



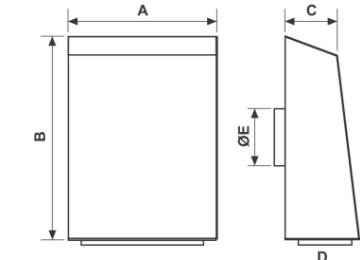
Elicent EXT 150

- Centrifugal extraction fan
- For 150mm ducts
- Through-wall installation
- For range-hoods or as a central extraction system
- Backdraught flap

Model	m ³ /h	l/s	Pa	W	dB(A)
150A	426	118	322	56	56
150B	708	197	467	110	59



Acceptable solution G4/AS1 and NZ Healthy Homes Standard



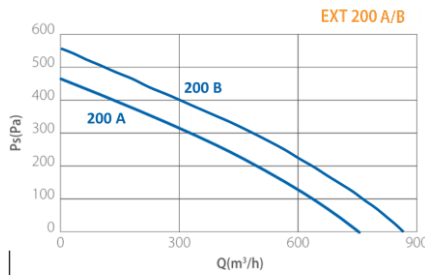
Model	A	B	C	D	ØE	kg
150A	260	355	92	131	148	5
150B	360	450	116	155	148	7.4



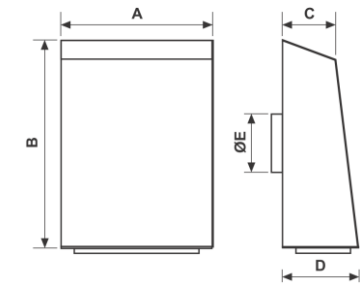
Elicent EXT 200

- Centrifugal extraction fan
- For 200mm ducts
- Through-wall installation
- For range-hoods or as a central extraction system
- Backdraught flap

Model	m ³ /h	l/s	Pa	W	dB(A)
200A	793	220	486	120	61
200B	908	252	609	158	65



Acceptable solution G4/AS1 and NZ Healthy Homes Standard



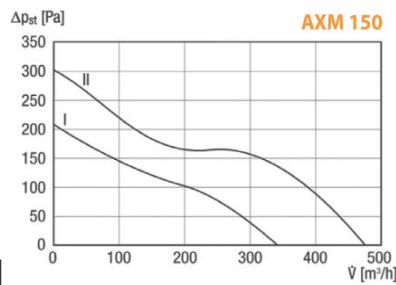
Model	A	B	C	D	ØE	kg
200A/B	360	450	116	155	148	7.4



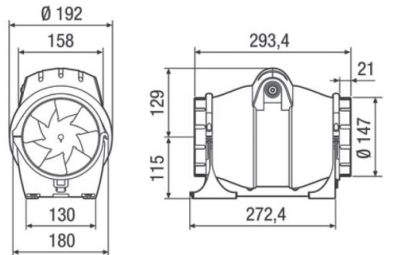
Elicent AXM 150

- Mixed-flow in-line fan
- For 150mm ducts
- With quick-change brackets
- For supply and extraction
- 2-speed motor

m ³ /h	l/s	Pa	W	dB(A)
260/480	94/133	210/300	70	66



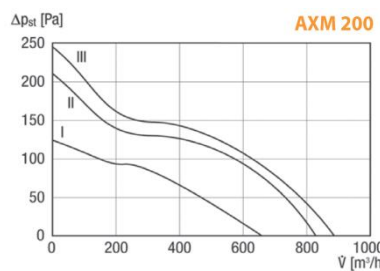
Acceptable solution G4/AS1 and NZ Healthy Homes Standard



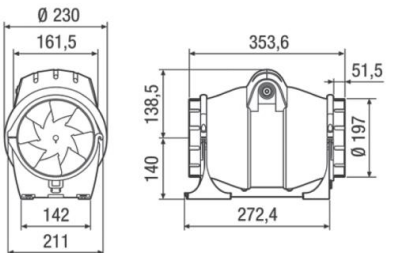
Elicent AXM 200

- Mixed-flow in-line fan
- For 200mm ducts
- With quick-change brackets
- For supply and extraction
- 3-speed motor

m ³ /h	l/s	Pa	W	dB(A)
720/820/910	200/228/253	125/210/245	75	58






Acceptable solution G4/AS1 and NZ Healthy Homes Standard





Available Versions

			
Elegance 150	✓	✓	✓
Elix 100	✓	✓	✓
Elprex 100	✓	✓	✓
Ecowind 150	✓	x	x
EXT 150 / 200	✓	x	x
AXM 150	✓	x	x
AXM 200	✓	x	x



BASE - On/Off through light or dedicated switch (not included)



TIMER - Integral electronic timer adjustable from 3 to 25 minutes



MHY - Smart humidity control: Automatic progressive increase/decrease of fan speed according to the level of relative humidity

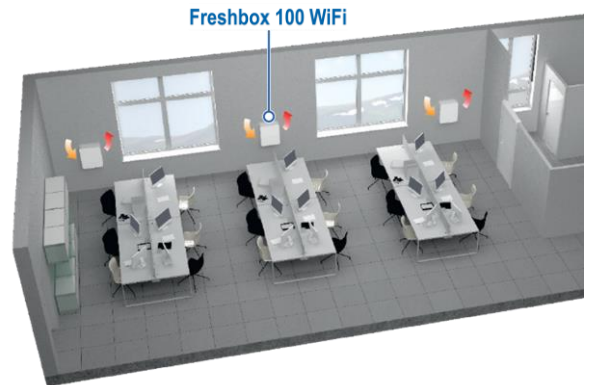
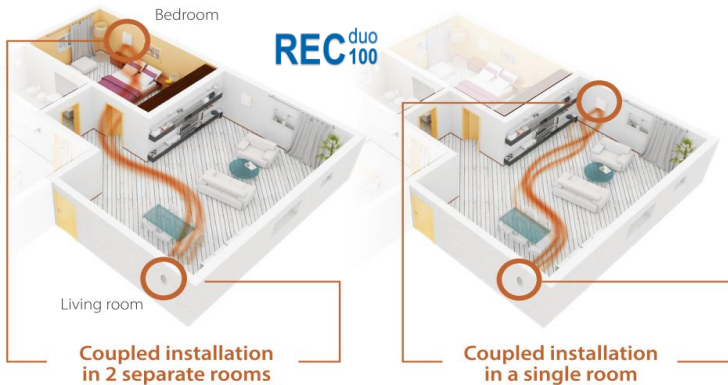
Price List - Extraction & Supply Fans

Item	Model	MOQ	NZD each incl. GST
Elegance			
ELI-ELE-2EL5000	Elicent Elegance 150 Base	1	\$ 192.00
ELI-ELE-2EL5001	Elicent Elegance 150 Timer	1	\$ 226.00
ELI-ELE-2EL5003	Elicent Elegance 150 MHY	1	\$ 316.00
Elix			
ELI-ELX-2EV1000	Elicent Elix 100 Base	1	\$ 244.00
ELI-ELX-2EV1001	Elicent Elix 100 Timer	1	\$ 298.00
ELI-ELX-2EV1004	Elicent Elix 100 MHY	1	\$ 398.00
Elprex			
ELI-ELP-2EP1010	Elicent Elprex 100 Base	1	\$ 480.00
ELI-ELP-2EP1011	Elicent Elprex 100 Timer	1	\$ 526.00
ELI-ELP-2EP1013	Elicent Elprex 100 MHY	1	\$ 687.00
Ecowind			
ELI-ECO-A-2MU6002	Elicent Ecowind 150 Base	1	\$ 126.00
EXT			
ELI-EXT-2EX6028	Elicent EXT 150A	1	\$ 712.00
ELI-EXT-2EX6029	Elicent EXT 150B	1	\$ 959.00
ELI-EXT-2EX8023	Elicent EXT 200A	1	\$ 994.00
ELI-EXT-2EX8024	Elicent EXT 200B	1	\$ 1,035.00
AXM			
ELI-AXM-4AX0004	Elicent AXM 150 Base (2-Speed)	1	\$ 332.00
ELI-AXM-4AX0008	Elicent AXM 200 Base (3-Speed)	1	\$ 379.00



Decentralised Ventilation Systems

Ideal for tight spaces and retrofit projects - Decentralised ventilation systems with heat-recovery are gaining popularity because of their ease of installation, minimal space requirement and low cost compared to centralised systems. The systems are made for direct through-wall installation, which saves the cost for ductwork and its installation, while still achieving the highest efficiency in terms of heat-recovery and power consumption.



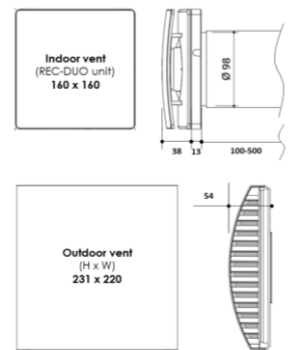
Elicent REC-Duo 100

- 'Through-wall' installation
- HR-efficiency up to 90%
- For rooms & areas up to 45m²
- Low running cost
- Including NZ Installation Kit
- Min. wall thickness 100mm

m ³ /h	V	W	dB(A)*
12/30/40	230	1/2.8/3.5	15 / 29

MODELS

- REC duo 100 BASE**
On/Off through light or dedicated switch (not included)
- REC duo 100 MHY**
Automatic increase/ decrease of fan speed according to the relative humidity (threshold is adjustable)
- REC duo 100 PLUS RC**
Comfort version with remote control to chose from 6 different operation modes, including humidity control. Can connect to 5 further PLUS RC units.



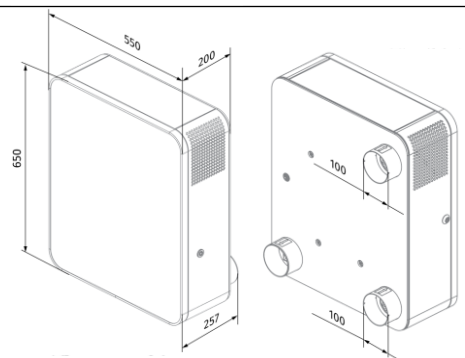
Blauberg Freshbox 100 WiFi

- 'Through-wall' installation
- Counterflow Heat-Exchanger
- Heater versions with enthalpy core
- F7 pollen filter for supply air
- Option for bathroom extraction
- Optional electric pre-/post-heater
- Wi-Fi connectivity with free app

Speed Steps	m ³ /h	dB(A)	Watt	HR % Efficiency
1 ... 5	30 ... 100	13 ... 39	20 ... 53	98 ... 89

MODELS

- **Freshbox 100-WiFi**
Standard Version with WiFi
- **Freshbox 100-WiFi ERV-E1**
With WiFi, post-heater (350W) and enthalpic HR-core
- **Freshbox 100-WiFi ERV-E2**
With WiFi, pre-heater (700W), Post-Heater (350W) and enthalpic HR-core



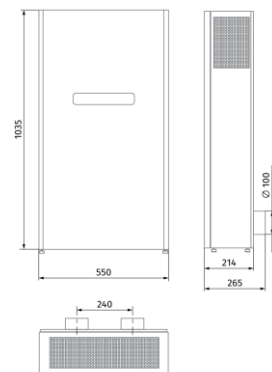
Blauberg Freshbox 200 WiFi

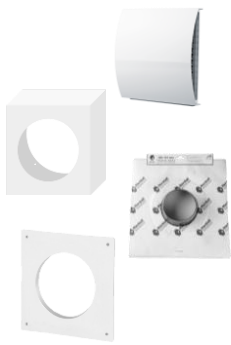
- 'Through-wall' installation
- Counterflow Heat-Exchanger
- All models with enthalpy core
- F7 pollen filter for supply air
- Option for bathroom extraction
- Optional electric pre-/post-heater
- Wi-Fi connectivity with free app

Speed Steps	m ³ /h	dB(A)	Watt	HR % Efficiency
1 ... 5	30 ... 200	12 ... 45	10 ... 134	85 ... 66

MODELS

- **Freshbox 200-WiFi**
Standard Version with WiFi
- **Freshbox 200-WiFi ERV-E1**
With WiFi, post-heater (700W) and enthalpic HR-core
- **Freshbox 200-WiFi ERV-E2**
Version with WiFi, pre-heater (650W), post-heater (700W) and enthalpic HR-core





REC-Duo NZ-Installation Kit

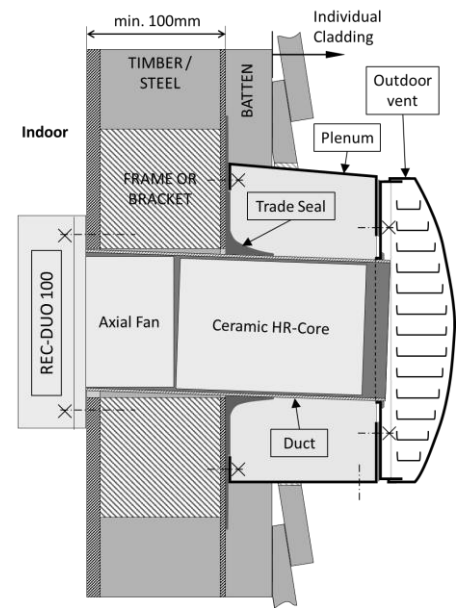
- For REC-Duo100
- Designed to meet NZ standards
- Suitable for slim walls (100-220mm)
- Makes retrofit easy
- Wind stopping outdoor grill
- Chrome option for outdoor grill
- Contains: Outdoor vent, Plenum, Trade seal and Wall bracket



Blauberg MS Freshbox 100/200 External Cowling & Grill

- For all Freshbox 100 and 200 models
- For 2 x 100mm ducts
- For separate air intake and air disposal
- Painted white or polished steel (chrome)

REC-Duo 100 Installation Scheme



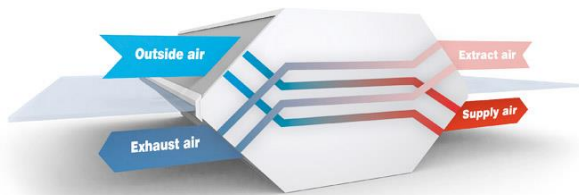
Price List - Decentralised Systems

Item	Model	MOQ	NZD each incl. GST
REC-Duo			
SOL-REC-D100-Base-Kit	Elicent REC Duo 100 Base - incl. Installation Kit Set	1	\$ 853.00
SOL-REC-D100-MHY-Kit	Elicent REC Duo 100 MHY - incl. Installation Kit Set	1	\$ 921.00
SOL-REC-D100-RC-Kit	Elicent REC Duo 100 Plus RC - incl. Installation Kit Set	1	\$ 1,072.00
Freshbox			
BLA-FRE-100-WiFi	Blauberg Freshbox 100 WiFi	1	\$ 5,177.00
BLA-FRE-100-WiFi-ERV-E1	Blauberg Freshbox 100 WiFi-ERV-E1 with Post-Heater	1	\$ 5,379.00
BLA-FRE-100-WiFi-ERV-E2	Blauberg Freshbox 100 WiFi-ERV-E2 with Post-Heater & Pre-Heater	1	\$ 5,582.00
BLA-FRE-200-WiFi-ERV	Blauberg Freshbox 200 WiFi ERV	1	\$ 6,394.00
BLA-FRE-200-WiFi-ERV-E1	Blauberg Freshbox 200 WiFi-ERV-E1 with Post-Heater	1	\$ 6,698.00
BLA-FRE-200-WiFi-ERV-E2	Blauberg Freshbox 200 WiFi-ERV-E2 with Post-Heater & Pre-Heater	1	\$ 6,952.00
Accessories			
SOL-ACC-INST100-Kit	Installation Kit for REC-Duo 100 - (excl. REC-Duo)		incl. with unit
BLA-FRE-MS100WHITE	Blauberg MS Freshbox 100/200 External Cowling & Grill in White	1	\$ 209.00
BLA-FRE-MS100CHROME	Blauberg MS Freshbox 100/200 External Cowling & Grill in Chrome	1	\$ 297.00
BLA-FRE-FP193x158x18G4PPI	Blauberg Freshbox G4 Filter	1	\$ 37.00
BLA-FRE-FP193x158x47F8	Blauberg Freshbox F8 Filter	1	\$ 91.00
BLA-FRE-FP193x158x47F8C	Blauberg Freshbox F8 Carbon Filter	1	\$ 153.00
BLA-FRE-FP193x158x47H13	Blauberg Freshbox H13 Hepa Filter	1	\$ 104.00
BLA-FRE-CD-2	Blauberg Freshbox CO2 Probe	1	\$ 1,269.00
BLA-FRE-HR-S	Blauberg Freshbox Humidity Probe	1	\$ 517.00

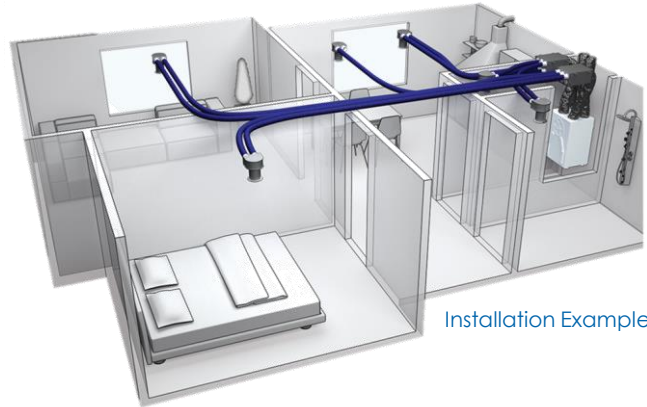


Centralised Ventilation Systems - MVHR

Advanced Technology for a healthy and efficient home - Mechanical balanced ventilation systems with heat recovery (MVHR) offer numerous advantages in new builds, contributing to improved indoor air quality, energy efficiency, and overall comfort. These systems provide a controlled and balanced airflow, ensuring a constant supply of fresh air while efficiently recovering and reusing heat from the outgoing stale air.



Principle of a counterflow heat-exchanger



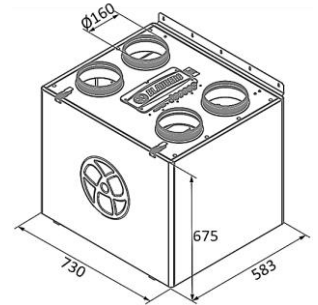
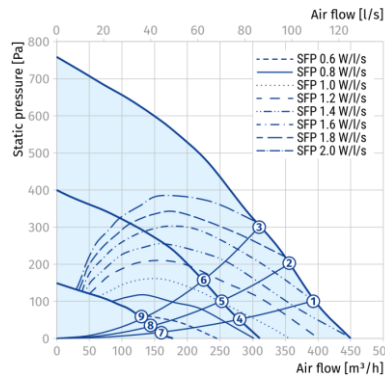
Installation Example



Blauberg Komfort EC SB350

- Passive House certified
- HR-efficiency up to 92%
- EC-brushless fans
- To ventilate up to 210m²
- WiFi connection & app
- F7 pollen filter
- Summer-Bypass

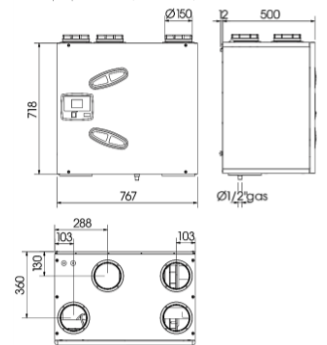
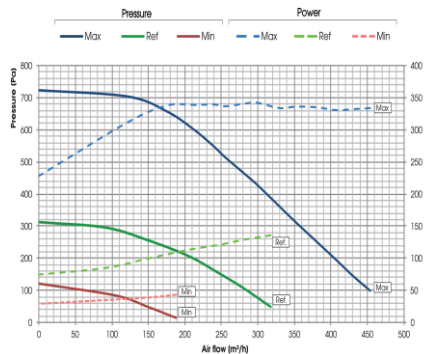
m ³ /h	l/s	Pa	W	dB(A)
390	109	650	180	35



Utek Reversus 2

- Powerful & highly efficient
- HR-efficiency up to 92%
- EC-brushless fans
- To ventilate up to 230m²
- Optional heating/cooling coil
- F7 pollen filter
- Summer-Bypass

m ³ /h	l/s	Pa	W	dB(A)
450	125	700	340	45



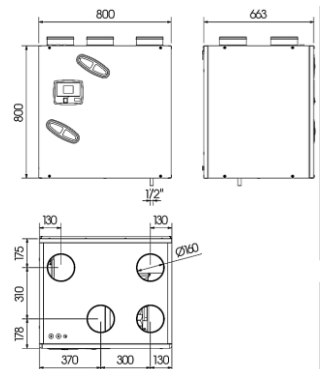
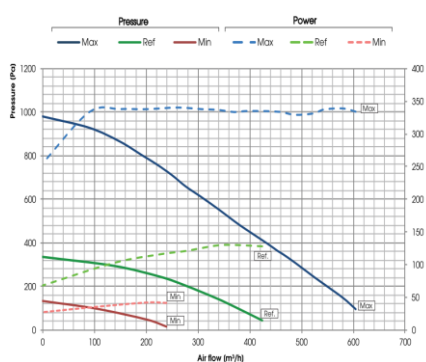
Optional Post Heater



Utek Reversus 3

- For commercial & large homes
- HR-efficiency up to 93%
- EC-brushless fans
- To ventilate up to 310m²
- Optional heating/cooling coil
- F7 pollen filter
- Summer-Bypass

m ³ /h	l/s	Pa	W	dB(A)
600	167	910	340	42



Optional Post Heater

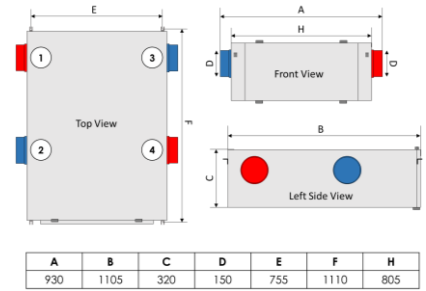
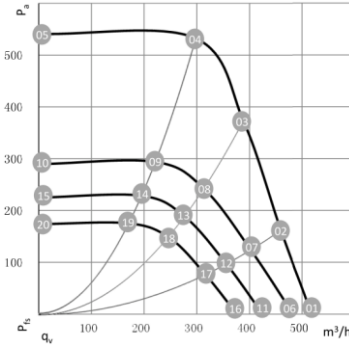




Solutionair Ventus 450+

- Horizontal unit
- HR-efficiency up to 96%
- ebm-papst brushless fans
- To ventilates up to 250m²
- PM2.5 and CO2 Sensor
- High grade pollen filter PM2.5
- Summer-Bypass

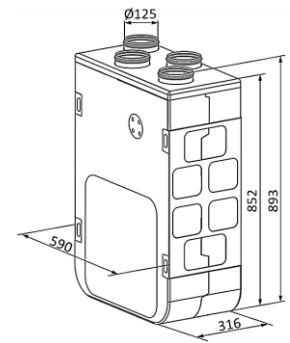
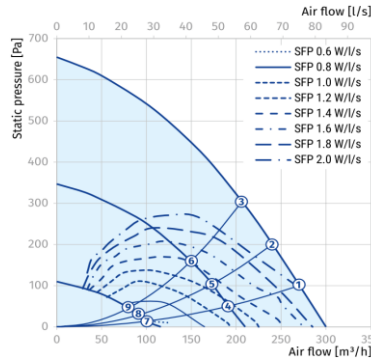
m ³ /h	l/s	Pa	W	dB(A)
480	134	540	120	42



Blauberg Komfort EC S5B270

- Only 32cm deep
- HR-efficiency up to 98%
- EC-brushless fans
- To ventilate up to 160m²
- Optional WiFi connection
- Optional F8 pollen filter
- Summer-Bypass

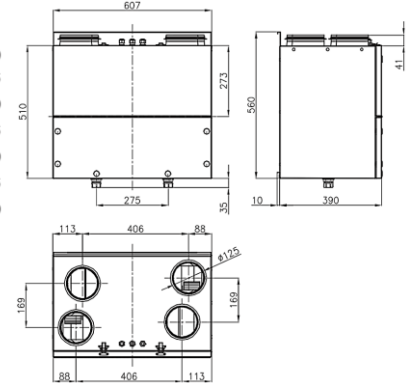
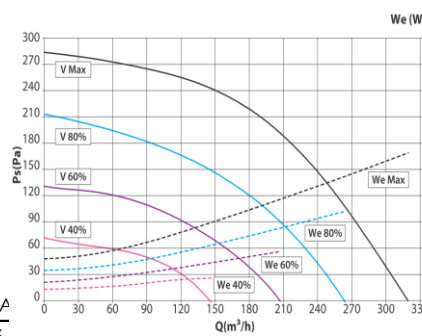
m ³ /h	l/s	Pa	W	dB(A)
270	75	540	162	34



Elicent REC 320 TC

- Only 39cm deep
- HR-efficiency up to 93%
- EC-brushless fans
- To ventilate up to 125m²
- Touch Panel Controller
- Silent operation
- Summer-Bypass

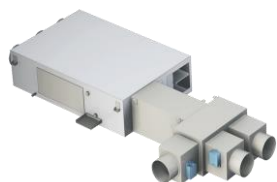
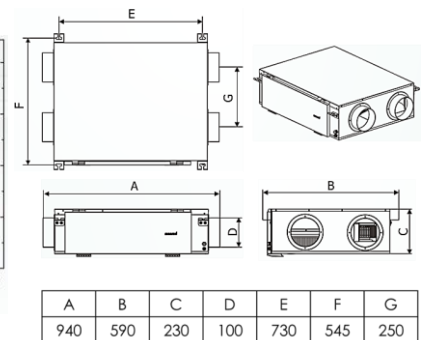
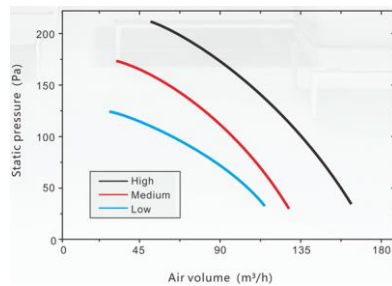
m ³ /h	l/s	Pa	W	dB(A)
265	74	260	70	26



Solutionair Ventus 150

- Horizontal compact unit
- Crossflow heat-exchanger
- 3-Speed ebm-papst fans
- To ventilate up to 90m²
- Washable G4 filter
- No condensation drain req.

m ³ /h	l/s	Pa	W	dB(A)
150	42	200	106	21



Aertesi EOS B1

- All-In-One System
- Suitable for Passive Houses
- EC-brushless fans
- To ventilate up to 210m²
- Incl. heating/cooling coil
- 4kw or 8kW version available
- Vertical & Horizontal option
- Up to 4-zone automatic
- Requires Air-to-Water HP



Apartment Layout (multiple units)



Domestic Layout

Layout and Quote on request



Price List - Centralised Systems

Item	Model	MOQ	NZD each incl. GST
Blauberg			
BLA-KOM-EC-SB350-KIT	Blauberg Komfort EC SB 350 S21 incl. siphon kit and HR-probe	1	\$ 7,002.00
BLA-KOM-EC-S5B-270-S14	Blauberg Komfort EC S5B 270 S14 incl. glass wall panel	1	\$ 4,574.00
BLA-KOM-EC-S5B-270-S21	Blauberg Komfort EC S5B 270 S21 incl. WiFi-controller and app	1	\$ 5,804.00
Elicent			
ELI-VEN-1RC0293	Elicent REC 320 TC incl. wall touch Controller	1	\$ 4,968.00
Utek			
UTE-REV-3EL0T0020ASV	Reversus 2	1	\$ 6,649.00
UTE-REV-3EL0T0L20ASV	Reversus 2 incl. electr. pre-heater	1	\$ 7,372.00
UTE-REV-3ELST0020ASV	Reversus 2 incl. hydronic coil unit H20 size 2	1	\$ 8,876.00
UTE-REV-3ELSTL020ASV	Reversus 2 incl. electr. pre-heater and hydronic coil unit H20 size 2	1	\$ 9,599.00
UTE-REV-3ER0T0020ASV	Reversus 3	1	\$ 7,517.00
UTE-REV-3ER0TL020ASV	Reversus 3 incl. electr. pre-heater	1	\$ 8,074.00
UTE-REV-3ERST0020ASV	Reversus 3 incl. hydronic coil unit H20 size 2	1	\$ 9,814.00
UTE-REV-3ERSTL020ASV	Reversus 3 incl. electr. pre-heater and hydronic coil unit H20 size 2	1	\$ 10,371.00
Ventus			
SOL-VEN-450+Kit12	Ventus 450+ Kit12, incl. LCD Console & Ductwork for 12 rooms	1	\$ 7,688.00
SOL-VEN-450+Kit9	Ventus 450+ Kit9, incl. LCD Console & Ductwork for 9 rooms	1	\$ 6,343.00
SOL-VEN-450+Kit6	Ventus 450+ Kit6, incl. LCD Console & Ductwork for 6 rooms	1	\$ 5,962.00
SOL-VEN-450+	Ventus 450+ incl. HD wall touch console	1	\$ 5,016.00
SOL-VEN-150	Solutionair Ventus 150 incl. wall Controller	1	\$ 1,115.00
Blauberg Accessories			
BLA-KOM-S25	Blauberg Komfort S25 Remote Controller	1	\$ 529.00
BLA-KOM-EVH-160-1.2	Blauberg Komfort EVH 160-1.2-1 Pre-Heater , 1.2kW, 160mm spigot	1	\$ 609.00
BLA-KOM-FS1	Blauberg Komfort Internal Humidity Probe	1	\$ 271.00
BLA-KOM-SFK20X32	Blauberg Komfort Siphon kit	1	\$ 216.00
BLA-KOM-F7	Blauberg Komfort F7 Filter	1	\$ 166.00
BLA-KOM-G4	Blauberg Komfort G4 Filter	1	\$ 117.00
BLA-BFT-SD125/900	Blauberg 125mm Silencer	1	\$ 274.00
BLA-BFT-SD160/900	Blauberg 160mm Silencer	1	\$ 318.00
Utek Accessories			
UTE-REV-OJ1000000000	Reversus Siphon for condensation drain	1	\$ 93.00
UTE-REV-0V0000000013	Reversus Feet Kit in stainless steel, painted black	1	\$ 151.00
UTE-REV-0G0000000032	Reversus Humidity Probe, in duct or wall-mounted	1	\$ 946.00
UTE-REV-0G0000000012	Reversus CO2 Probe, wall-mounted	1	\$ 424.00
UTE-REV-0F1177440025	Reversus 2 ePM10 Filter	1	\$ 27.00
UTE-REV-0F5177440025	Reversus 2 ePM1 Filter	1	\$ 98.00
UTE-REV-0F5177610025	Reversus 3 ePM2.5 Filter	1	\$ 155.00
UTE-REV-0F1177610025	Reversus 3 ePM10 Filter	1	\$ 31.00
UTE-REV-CADBATH2O001	Reversus 150mm H20 coil unit for heating/cooling size 1	1	\$ 1,467.00
UTE-REV-CADBATH2O002	Reversus 150mm H20 coil unit for heating/cooling size 2	1	\$ 2,316.00
UTE-REV-CADBATH2O005	Reversus 160mm H20 coil unit for heating/cooling size 1	1	\$ 1,467.00
UTE-REV-CADBATH2O006	Reversus 160mm H20 coil unit for heating/cooling size 2	1	\$ 2,316.00
Ventus Accessories			
SOL-FIL-V150-FILTER-G4	Ventus 150 Filter Set (G4)	1	\$ 19.00
SOL-FIV-V450-FILTER-SET	Ventus 450 Filter Set (PM2.5 and G4)	1	\$ 299.00

BLAUFAST Air Distribution System



Quick and fast installation due to flexible air ducts and click system. No special tools required.



No air leakages. Meets airtight class C and Passive House standard.



Ducts are designed for high external load capacity, i.e. pressure of the concrete floor.



Modular system with a variety of options, easy to combine.



Compact size. Suitable for non-standard ceilings with complicated geometry.



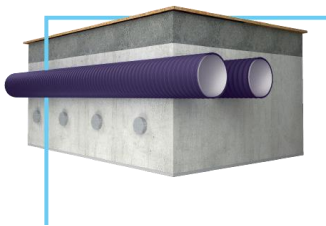
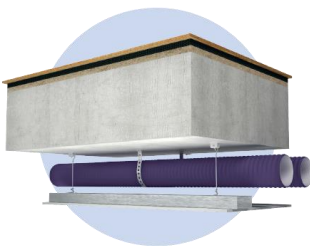
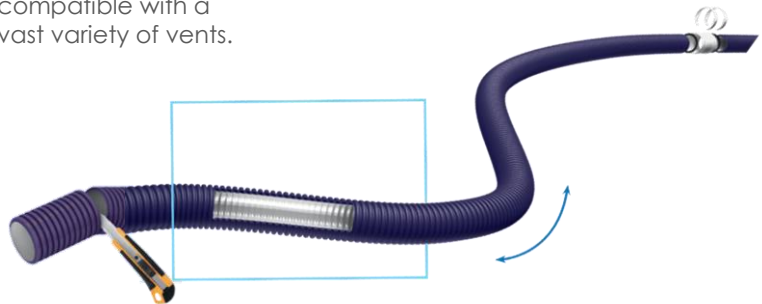
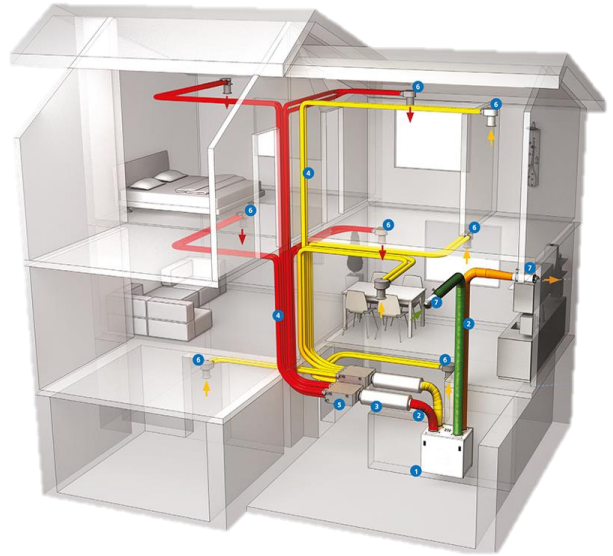
Smooth inner surface makes maintenance easy.



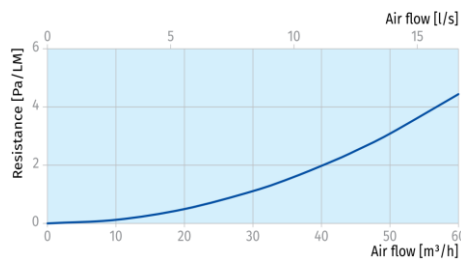
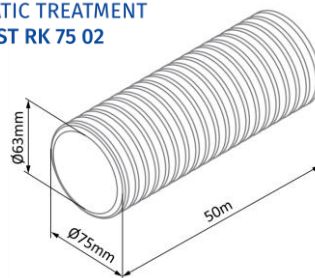
Ducting and distribution boxes with low noise emission.



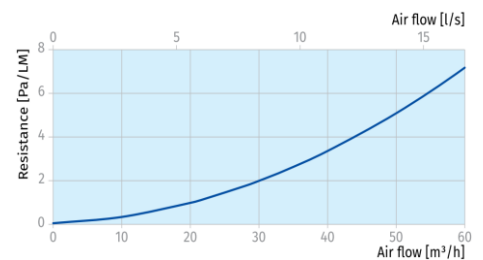
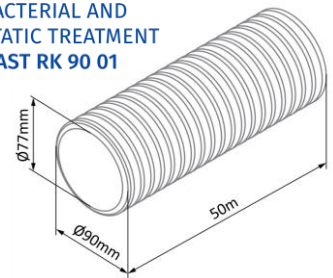
Individual interior look with standard 125mm spigot, compatible with a vast variety of vents.



BlauFast 75
ROUND DUCT WITH
ANTISTATIC TREATMENT
BLAUFAST RK 75 02



BlauFast 90
ROUND DUCT WITH
ANTIBACTERIAL AND
ANTISTATIC TREATMENT
BLAUFAST RK 90 01



Price List - BlauFast 75

Item	Model	MOQ	NZD each incl. GST
BlauFast 75			
	BLA-BFT-RK75/50-02	Anticstatic composite duct, corrugated outside, smooth inside. 50m / roll.	1 \$ 389.00
	BLA-BFT-SR125/75x6-01	Air distribution box, made of aluzinc coated steel, sound-insulated. Connections: 6 x DN 75 / 1 x 125 mm.	1 \$ 493.00
	BLA-BFT-SR125/75x6-02	Air distribution box, made of aluzinc coated steel, sound-insulated. Connections: 6 x DN 75 / 1 x 125 mm.	1 \$ 438.00
	BLA-BFT-SR125/75x6-03	Air distribution box, made of aluzinc coated steel, sound-insulated. Connections: 6 x DN 75 / 1 x 125 mm.	1 \$ 510.00
	BLA-BFT-SR160/75x8-01	Air distribution box, made of aluzinc coated steel. Connections: 8 x DN 75 / 1 x 160 mm.	1 \$ 148.00
	BLA-BFT-SR160/75x10-01	Air distribution box, made of aluzinc coated steel, sound-insulated. Connections: 10 x DN 75 / 1 x 160 mm.	1 \$ 520.00
	BLA-BFT-SR160/75x12-01	Air distribution box, made of aluzinc coated steel. Connections: 12 x DN 75 / 1 x 160 mm.	1 \$ 449.00
	BLA-BFT-SR160/75x12-01	Air distribution box, Connections: 12 x DN 75 / 1 x 160 mm.	1 \$ 449.00
	BLA-BFT-SR200/75x15-01	Air distribution box, made of aluzinc coated steel, sound-insulated. Connections: 15 x DN 75 / 1 x 200 mm.	1 \$ 683.00
	BLA-BFT-RPZ125/75X2-01	Ceiling-mounted valve connector. Connections: 2 x DN 75 / 1 x 125 mm.	2 \$ 62.00
	BLA-BFT-RKF75	Round flange, connects RK ducts to SR distribution box, RS lock included in the delivery.	10 \$ 8.00
	BLA-BFT-RS75	Duct lock, fixes RK ducts to RKF 90, RM 90, RB 90, RPZ 01 and SR...50P, SR...51P distribution boxes.	10 \$ 3.00
	BLA-BFT-S	Duct lock, fixes RK ducts to RKF, RM, MH, RPF, RPW and RPZ.	10 \$ 3.00
	BLA-BFT-RKP75	Duct cap, closes RK ducts.	10 \$ 4.00
	BLA-BFT-RFP75	Flange cap, closes RKF flanges.	10 \$ 6.00
	BLA-BFT-RSP75	Box cap, closes unused connections of SR distribution boxes.	10 \$ 5.00
	BLA-BFT-RL75	Sealing ring, used to provide airtightness class C for RK ducts connections. Made of synthetic rubber.	10 \$ 3.00
	BLA-BFT-RM75	Coupling, connects RK ducts. 2 x RS locks included in the delivery.	10 \$ 8.00
	BLA-BFT-RD75	Air flow restrictor for RKF flange.	10 \$ 3.00
	BLA-BFT-RB75	90° Bend, RK ducts 90° connection.	1 \$ 56.00

Price List - BlauFast 90

Item	Model	MOQ	NZD each incl. GST
<i>BlauFast 90</i>			
 BLA-BFT-RK90/50-01	Antistatic, antibacterial composite duct, corrugated outside, smooth inside. 50m / roll.	1	\$ 454.00
 BLA-BFT-SR160/90x6-04	Air distribution box, made of aluzinc coated steel, sound-insulated. Connections: 6 x DN 90 / 1 x 160 mm.	1	\$ 398.00
 BLA-BFT-SR160/90x10-02	Air distribution box, made of aluzinc coated steel, sound-insulated. Connections: 10 x DN 90 / 1 x 160 mm.	1	\$ 489.00
 BLA-BFT-SR200/90x10-02	Air distribution box, made of aluzinc coated steel, sound-insulated. Connections: 10 x DN 90 / 1 x 200 mm.	1	\$ 489.00
 BLA-BFT-RPZ125/90x2	Ceiling-mounted valve connector, Connections: 2 x DN 90 / 1 x 125 mm.	2	\$ 62.00
 BLA-BFT-RKF90	Round flange, connects RK ducts to SR distribution box, RS lock included in the delivery.	10	\$ 8.00
 BLA-BFT-S	Duct lock, fixes RK ducts to RKF, RM, MH, RPF, RPW and RPZ.	10	\$ 3.00
 BLA-BFT-RKP90	Duct cap, closes RK ducts.	10	\$ 5.00
 BLA-BFT-RFP90	Flange cap, closes RKF flanges.	10	\$ 8.00
 BLA-BFT-RSP90	Box cap, closes unused connections of SR distribution boxes.	10	\$ 5.00
 BLA-BFT-RL90	Sealing ring, used to provide airtightness class C for RK ducts connections. Made of synthetic rubber.	10	\$ 3.00
 BLA-BFT-RM90	Coupling, connects RK ducts. 2 x RS locks included in the delivery.	10	\$ 8.00
 BLA-BFT-RD90	Air flow restrictor for RKF flange.	10	\$ 4.00
 BLA-BFT-RB90	90° Bend, RK ducts 90° connection.	1	\$ 56.00

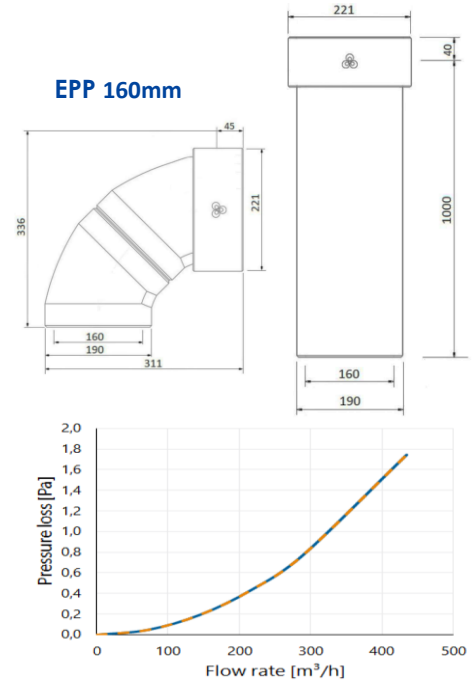
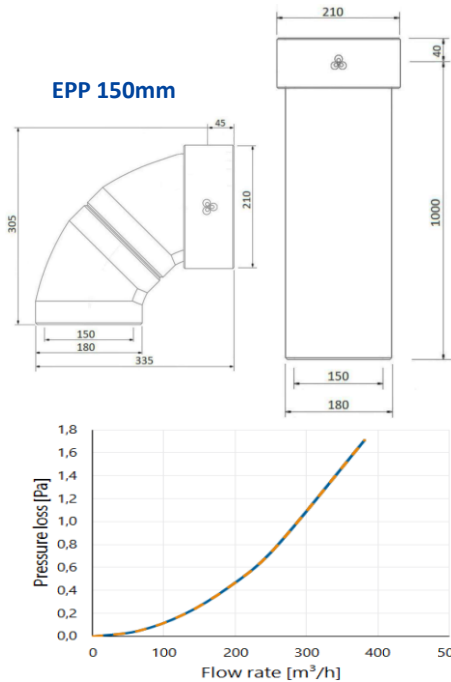
Utek EPP-Ducting



Expanded polypropylene is used for thermal ducts and fittings and replaces traditional steel ducts with wool insulation.

Its excellent thermal conductivity and its faster and easy installation makes it the preferred ducting.

- Fast installation - easy cut & plug
- Super light but sturdy and rigid
- High insulation (R2.4)
- Quiet and airtight
- Elimination of thermal bridges
- Low vibration transmission
- Low air-resistant, easy to clean
- Airflow up to 430m³/h per duct



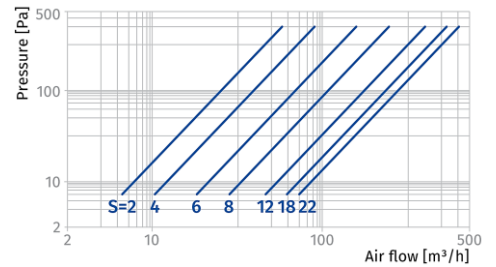
Price List

Item	Model	MOQ	NZD each incl. GST
Utek EPP Ducting			
 UTE-REV-PPE-002-P	Utek EPP Duct, ID 150mm, 1m length	6	\$ 69.00
 UTE-REV-PPE-008-P	Utek EPP Corner 90°, ID 150mm	12	\$ 46.00
 UTE-REV-PPE-014-P	Utek EPP Joiner, ID 150mm	6	\$ 17.00
 UTE-REV-PPE-036-P	Utek EPP Duct, ID 160mm, 1m length	4	\$ 96.00
 UTE-REV-PPE-037-P	Utek EPP Corner 90°, ID 160mm	10	\$ 64.00
 UTE-REV-PPE-038-P	Utek EPP Joiner, ID 160mm	6	\$ 19.00

Air Valves / Vents

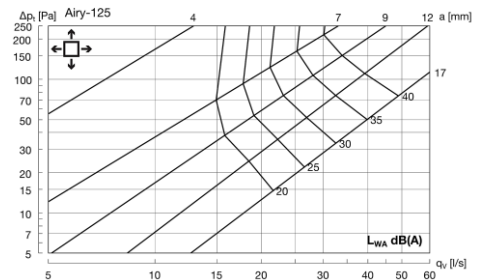
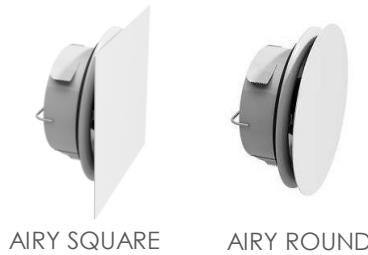
Blauberg Air Valve

- Air Valve Disc for 125mm spigots
- For wall- and ceiling mounted connectors
- Metal with white polymer coating
- Stepless air flow regulation
- For supply & extract



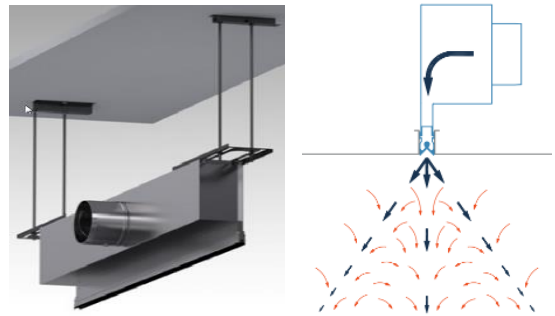
Lindab AIRY

- Swedish quality vent with sleek design
- Air Valve Disc for 125mm spigots
- For wall- and ceiling mounted connectors
- Galvanised sheet metal, white RAL 9003
- Stepless air flow regulation
- For supply & extract



Kiefer INDUL Linear Vent

- High performance vent for highest comfort
- Negative detail installation in ceiling
- Completely draught-free air distribution
- Clean ceilings due to 'no Coanda-effect' outlets
- Incl. insulated plenum and 125mm spigot
- Option - from room adjustable damper
- Can be connected to BlauFast air valve connector
- Available in 0.5 and 1m, as well as dummy profiles



Price List

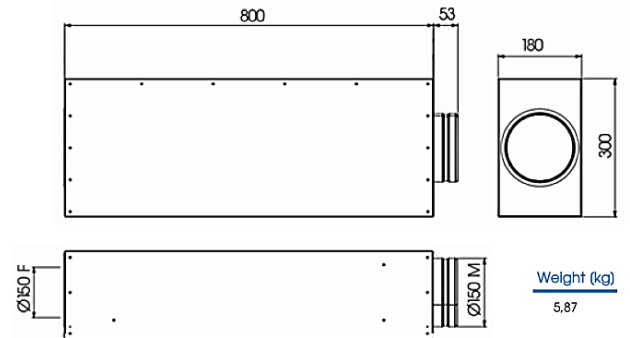
Item	Model	MOQ	NZD each incl. GST
Air Valves / Vents			
BLA-BFT-VMBR125	Blauberg concave air disc valve, 125mm	1	\$ 27.00
BLA-BFT-VMR125	Blauberg Convex air disc valve, 125mm	1	\$ 27.00
LIN-AIR-125RD-Kit	Lindab AIRY ROUN, round plate, 125mm	1	\$ 119.00
LIN-AIR-125SQ-Kit	Lindab AIRY SQUA, square plate, 125mm	1	\$ 119.00
KIE-IND-18-125N1000	Kiefer INDUL 18mm x 1m, insulated, for GIB	1	\$ 890.00
KIE-IND-18-125N1000D	Kiefer INDUL 18mm x 1m, insulated, Damper, for GIB	1	\$ 1,022.00
KIE-IND-18-125N500	Kiefer INDUL 18mm x 0.5m, insulated, for GIB	1	\$ 761.00
KIE-IND-18-125N500D	Kiefer INDUL 18mm x 0.5m, insulated, Damper, for GIB	1	\$ 893.00
KIE-IND-P18-118-N1000	Kiefer INDUL 18mm x 1m, dummy profile for GIB	1	\$ 305.00



Silencer

Utek Alveolare Silencer

- Innovative compact silencer.
- The inlet is composed of glass wool covered by a black fibre glass, which is removable and washable
- Meets fire resistance class A2 certification UNI EN 13501-1
- Patented by CLA

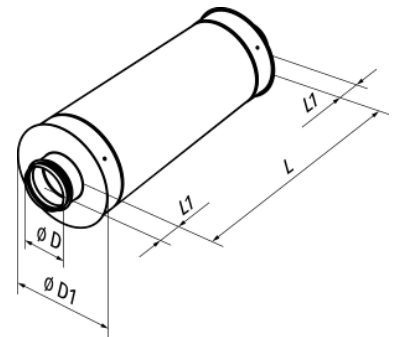


Blauberg Silencer

- Used jointly with sound-insulated fans in premises with high requirements re noise level produced by ventilation equipment.
- Galvanized steel case, filled with non-flammable sound-absorbing material with protecting covering against fibre blowing.
- Airtight connection with air ducts due to connecting flanges with rubber seals.



Model	ØD	ØD1	L	L1	kg
SD125/900	124	225	900	50	4.1
SD160/900	159	260	900	50	4.6

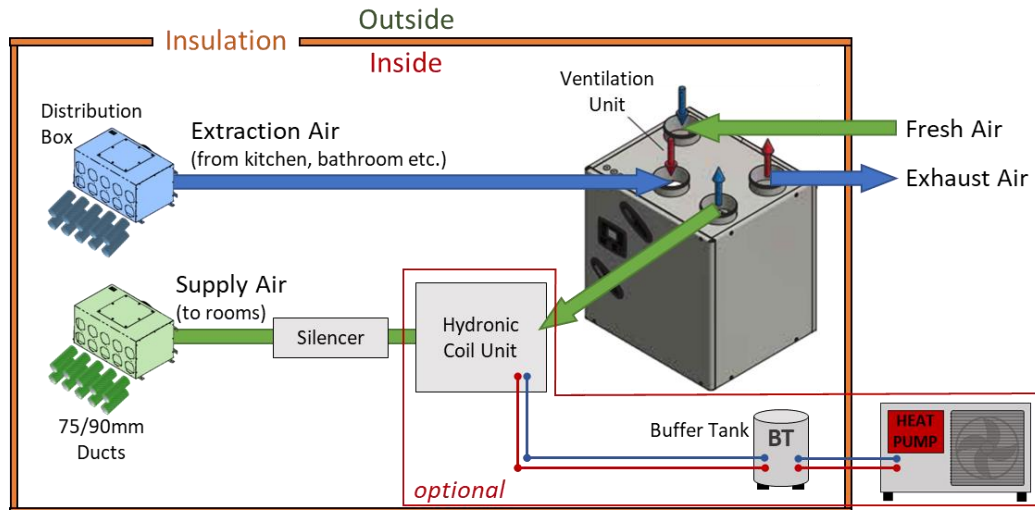


Price List

Item	Model	MOQ	NZD each incl. GST
Utek Silencer			
UTE-REV-CADSILENZ006	ALVEOLARE Silencer 150mm	1	\$ 381.00
UTE-REV-CADSILENZ007	ALVEOLARE Silencer 160mm	1	\$ 381.00
UTE-REV-CADRACC00004	Joiner 150mm for ALVEOLARE Silencer	1	\$ 24.00
UTE-REV-CADRACC00005	Joiner 160mm for ALVEOLARE Silencer	1	\$ 26.00
Blauberg Silencer			
BLA-BFT-SD125/900	Blauberg 125mm Silencer	1	\$ 274.00
BLA-BFT-SD160/900	Blauberg 160mm Silencer	1	\$ 318.00

Information on MVHR Installations

Layout



Schematic layout not to scale

Unit

- Best location for the unit is in the centre of the house, however, space and noise concerns may be considered.
- Unit needs to be accessible for filter change and servicing.
- Unit needs to be connected to a condensate pipe (e.g. to sink or drain).
- Unit emits some noise, therefore it is recommended to locate unit away from bedrooms and quiet rooms.
- Consider installing additional insulation around the unit where bedrooms are in close proximity.

General

- Unit, air distribution boxes and ducting need to sit within the house envelope (insulation).
- Plan for a central vertical shaft for ducting to upper floor(s) (if any).
- Longer ducts with more bends results in higher back-pressure and reduced air flow and performance.

Ducting

Supply and Extraction Ducting

- The BlauFast flexi-rigid ducting requires a minimum ceiling space (75/90mm for ducts, 100mm for air valves).
- For heating and cooling use only the larger BlauFast 90 duct, to achieve a higher exchange rate.
- Air distribution boxes should sit in a central location so that all outgoing ducts are of similar length.
- The distribution boxes need to be connected with the unit (150-200mm ducting).
- The minimum duct length of each run should be 4m.
- For optimal performance a minimum number of supply and extraction ducts are recommended.
- Supply vents need to be 0.5m away from walls and not above bed headboards or seating areas to avoid drafts.
- Consider locating supply vents further away from door or return points to 'cross-ventilate' most of a room or area.
- Each air vent can be connected to 2x ducts. If single ducted, the second air vent connection can be blocked.

Fresh and Exhaust Air Ducting

- The ducting for the fresh air requires space for an insulated duct (150-200mm +insulation).
- The ducting for exhaust (disposal) air does not need to be insulated (150-200mm).
- Exhaust and Fresh Air grills outside should be at least 2m apart to avoid short-circuit.
- Exhaust Air can be discharged over the roof. Fresh Air should be taken from a shaded place with no air pollution.
- Penetrations and external grills need to meet local council requirements (e.g. watertightness, close gas installation).

Example: KOMFORT SB350	Blaufast System		EPP-Ducting
	Supply Air	Extraction Air	Fresh/Exhaust Air
Duct diameter	75mm	75mm	160mm
Air volume (approx.)	350 m ³ /h	350 m ³ /h	max. 450 m ³ /h
Number of ducts	8-12	6-10	1 each
Air per duct	up to 35m ³ /h	up to 45m ³ /h	max. 450 m ³ /h



Overflow Openings

Air will need to travel freely from supply points to extraction points. If doors are blocking the air path, ensure you meet the requirements in accordance with below table.

Total supply/ extract overflow	10m ³ /h	20m ³ /h	30m ³ /h	40m ³ /h	50m ³ /h	60m ³ /h
Min. surface for doors with seal	25cm ²	50cm ²	75cm ²	100cm ²	125cm ²	150cm ²
Shorten 90's door with seal	3mm	6mm	8mm	11mm	14mm	17mm
Shorten 80's door with seal	3mm	6mm	9mm	13mm	16mm	19mm
Min. surface for doors w/o seal	0cm ²	25cm ²	50cm ²	75cm ²	100cm ²	125cm ²
Shorten 90's door w/o seal	0mm	3mm	6mm	8mm	11mm	14mm
Shorten 80's door w/o seal	0mm	3mm	6mm	9mm	13mm	16mm

Fireplace

We recommend using only mechanical self-ventilated fireplaces. To ensure the safe operation of fireplace and ventilation system next to each other, please consult your installer. It is recommended to have a safety connection between the 2 systems, so that the ventilation unit will create a positive pressure while the fireplace is in use to avoid toxic fumes coming into the living area.

Heat-Pump (for heating/ cooling options)

- Heat-pump requires outdoor platform (check with your local council for specific requirements).
- We recommend having the heat-pump in a shaded place and close to the buffer tank and unit.
- Especially in colder areas of the country the buffer-tank should sit inside the house.
- The water circuit plumbing must be fully insulated, including all connected valves and parts.
- The system requires several components, such as bleed-air valve, expansion bladder and autofill valve.
- Consult a professional plumber for heating/ cooling systems, incorrect plumbing can lead to serious water damage!

Heating and Cooling with Fan Coil Units (FCUs): Efficient, reliable and effective

No refrigerant inside the house

Common heat pump solutions often involve the use of an Air-to-Air heat pump. These systems circulate refrigerant through piping into your home via a high-wall unit or a ducted central unit. One challenge with this setup is that issues related to piping leaks are frequently left undetected because the standard refrigerant, R410A, is odourless. Newer refrigerants such as R32 or R290 (propane) are flammable, which adds an additional safety concern.

On the other hand, Hydronic FCUs operate using a water circuit instead of refrigerant. The water can be heated through various methods, including gas heaters or electric boilers. However, the most efficient and widely adopted approach is with a hydronic heat pump, also known as an Air-to-Water heat pump. While this type of heat pump still employs refrigerant for the heating and cooling processes, it uses a significantly smaller quantity, which contributes to a reduction in greenhouse gas emissions. Importantly, the refrigerant remains contained within the unit located outside your home, eliminating any potential health or fire risks.

Healthier

During the cooling process, hydronic FCUs selectively remove a portion of the humidity from the air. This approach is considerably healthier compared to typical Air-to-Air heat pump systems, which tend to supply excessively dry air. This is primarily due to the fact that refrigerants function at extremely low temperatures, effectively extracting nearly all the moisture from the air. Excessively dry air can have adverse effects on your health, manifesting in various ways. These effects range from irritated eyes and sinuses to potential respiratory and skin issues as well as lead to a variety of uncomfortable symptoms.

Highly efficient

When coupled with an Air-to-Water (hydronic) heat pump, FCUs operate at an exceptional level of efficiency. Depending on the outdoor and indoor temperatures as well as humidity levels, the system can achieve a Coefficient of Performance (COP) of 4 or even higher. This translates to the remarkable outcome of obtaining 4kW of heating or cooling capacity for every 1kW of electrical power input.

Instead heating and cooling

In comparison to radiant heaters, such as underfloor heating, heating with air is significantly faster. Air warms up much more rapidly than materials like concrete. As a result, you can perceive the temperature difference in a very short period. Moreover, most radiant heaters are incapable of providing cooling due to condensation water concerns. In contrast, a FCU offers the versatility to both heat and cool your space.

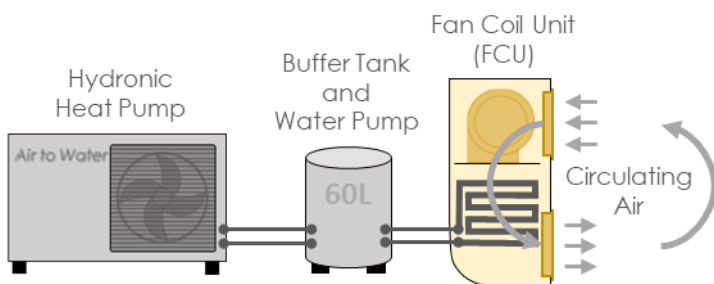
High level of comfort

FCUs offer individual control, allowing each room or area equipped with its own FCU to adjust the fan speed and temperature according to specific preferences. When properly selected and installed, FCUs operate quietly and unobtrusively while ensuring the desired temperature is maintained throughout the year.

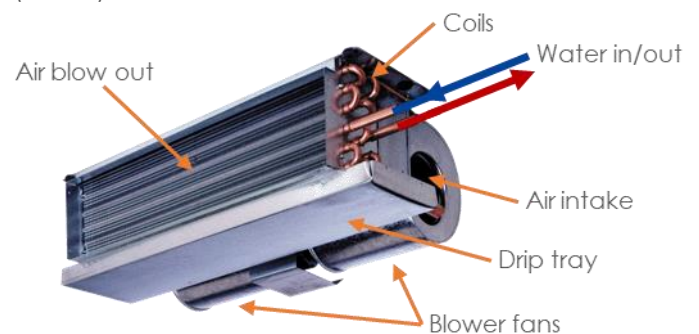
Domestic hot water

When an FCU is utilized in conjunction with a hydronic heat pump, the same heat pump can be used to heat your domestic hot water as well. Note that this option requires a Heat Pump ready domestic hot water tank and a few installation components.

Hydronic Heating/ Cooling Scheme



Typical Fan Coil Unit (naked)





Wall Case

Aertesi AER Slim Evo

- Compact size - only 126mm thick!
- Horizontal and vertical version
- Available with or without case
- Units can be installed in walls, cavities or cabinets
- AC- and EC-fan option
- Individual or Master-Slave control
- Optional internet module

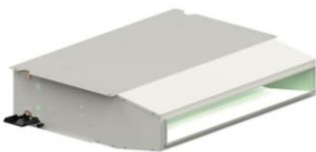
AC-Models	Air Volume	Capacity approx.	Coverage estimated
AER Slim 15	180m³/h	1.0kW	13m²
AER Slim 35	340m³/h	1.9kW	25m²
AER Slim 45	500m³/h	2.8kW	37m²
AER Slim 55	600m³/h	3.5kW	47m²



Aertesi Zeffiro

- FCU with endless options
- Horizontal and vertical version
- Available with or without case
- Different intake and duct options
- Wide range of accessories
- AC- and EC-fan option
- Individual or Master-Slave control
- Optional internet module

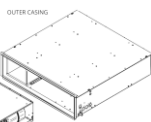
AC-Models	Air Volume	Capacity approx.	Coverage estimated
ZEF 316	328m³/h	1.8kW	24m²
ZEF 628	524m³/h	2.7kW	36m²
ZEF 840	759m³/h	4.1kW	55m²
ZEF 1250	1148m³/h	5.6kW	75m²
ZEF 1575	1384m³/h	7.9kW	105m²
ZEF 1885	1720m³/h	9.8kW	131m²



Aertesi LNH-A (Low Noise Hotel)

- Extra quiet operation
- Innovative integrated silencer
- Horizontal unit, intake from below
- For installation in Bulkheads, ideal for Hotels and Hospitals
- AC- and EC-fan option
- Individual or Master-Slave control
- Optional internet module

AC-Models	Air Volume	Capacity approx.	Coverage estimated
LNH-A 3	361m³/h	2.4kW	32m²
LNH-A 6	577m³/h	3.6kW	48m²
LNH-A 8	835m³/h	5.6kW	75m²
LNH-A 12	1263m³/h	8.0kW	107m²
LNH-A 15	1522m³/h	9.7kW	129m²



GRILL FRAME

Aertesi SHS-B Evo

- Silenced fan coil with special case
- Front air intake and air outlet
- All service can be done from front
- Allows for lighting below unit
- Ideal for hotel-room renovations
- AC- and EC-fan option
- Individual or Master-Slave control
- Optional internet module

EC-Models	Air Volume	Capacity approx.	Coverage estimated
SHS-B 320	279m³/h	1.9kW	25m²
SHS-B 634	446m³/h	3.0kW	36m²
SHS-B 1260	951m³/h	5.9kW	79m²

EC-Fan versions



Aertesi Soffio HP

- Ductable Fan Coil Unit
- 150 Pa at rated airflow
- Height only 370 to 635mm
- Ideal for central heating solutions
- Wide range of accessories, like filters, fresh air mixers and spigots
- AC- and EC-fan option
- Optional internet module

AC-Models	Air Volume	Capacity approx.	Coverage estimated
SOF 21	1257m³/h	7.3kW	97m²
SOF 38	2330m³/h	13.4kW	179m²
SOF 81	4510m³/h	26.7kW	356m²
SOF 91	4980m³/h	30.5kW	for large volume spaces
SOF 101	6828m³/h	40.1kW	
SOF 121	8800m³/h	53.6kW	



Hydronic Fan Coil Units



for 600x600 ceiling panels

Aertesi Brezza Single

- Water Cassette with Coanda Effect
- Designed to avoid cold drafts
- Different metal panels available
- Adjustable air outlet flaps
- AC- and EC-fan option
- Larger versions available
- Individual or Master-Slave control
- Optional internet module

AC-Models	Air Volume	Capacity approx.	Coverage estimated
BRE 53	710m ³ /h	3.8kW	51m ²
BRE 93	920m ³ /h	5.7kW	76m ²



Blauberg ALB

- Large volume Fan Coil Unit
- Suitable for large scale premises
- High-performance axial fan
- Smooth speed control
- Wall or ceiling mounting
- Suitable brackets available
- Paintable in different colours

Model	Air Volume	Capacity approx.	Blowing Range (max.)
ALB-25	2200m ³ /h	18kW	9m
ALB-30	3000m ³ /h	24kW	12m
ALB-45	3850m ³ /h	33kW	16m

Price List (further models and accessories are available)

Item	Model	MOQ	NZD each incl. GST
Aertesi AER Slim Evo			
AET-AES-152VBSXECA	Aertesi AER Slim 15 VB, vertical with cabinet, AC-motor	1	\$ 1,397.00
AET-AES-352VBSXECA	Aertesi AER Slim 35 VB, vertical with cabinet, AC-motor	1	\$ 1,593.00
AET-AES-452VBSXECA	Aertesi AER Slim 45 VB, vertical with cabinet, AC-motor	1	\$ 1,750.00
AET-AES-552VBSXECA	Aertesi AER Slim 55 VB, vertical with cabinet, AC-motor	1	\$ 1,954.00
Aertesi Zefiro			
AET-AES-ZE316VADX	Aertesi Zefiro 316 VA, vertical with cabinet, AC-motor	1	\$ 1,022.00
AET-AES-ZE628VADX	Aertesi Zefiro 628 VA, vertical with cabinet, AC-motor	1	\$ 1,205.00
AET-AES-ZE840VADX	Aertesi Zefiro 840 VA, vertical with cabinet, AC-motor	1	\$ 1,436.00
AET-AES-ZE1250VADX	Aertesi Zefiro 1250 VA, vertical with cabinet, AC-motor	1	\$ 1,586.00
AET-AES-ZE1575VADX	Aertesi Zefiro 1575 VA, vertical with cabinet, AC-motor	1	\$ 2,191.00
AET-AES-ZE1885VADX	Aertesi Zefiro 1885 VA, vertical with cabinet, AC-motor	1	\$ 2,787.00
Aertesi LNH-A			
AET-AES-LNH3DXA	Aertesi LNH-A 3, horizontal without cabinet, AC-motor	1	\$ 1,631.00
AET-AES-LNH6DXA	Aertesi LNH-A 6, horizontal without cabinet, AC-motor	1	\$ 1,933.00
AET-AES-LNH8DXA	Aertesi LNH-A 8, horizontal without cabinet, AC-motor	1	\$ 2,189.00
AET-AES-LNH12DXA	Aertesi LNH-A 12, horizontal without cabinet, AC-motor	1	\$ 2,264.00
AET-AES-LNH15DXA	Aertesi LNH-A 15, horizontal without cabinet, AC-motor	1	\$ 2,901.00



Item	Model	MOQ	NZD each incl. GST
Aertesi SHS-B Evo			
AET-AES-SHS320STDXECEB	Aertesi SHS-B Evo 320, horizontal without cabinet, EC-motor	1	\$ 2,937.00
AET-AES-SHS634STDXECEB	Aertesi SHS-B Evo 634, horizontal without cabinet, EC-motor	1	\$ 3,568.00
AET-AES-SHS1260STDXECEB	Aertesi SHS-B Evo 1260, horizontal without cabinet, EC-motor	1	\$ 4,101.00
Aertesi Soffio HP			
AET-AES-SHP21HCSP4DX	Aertesi Soffio HP 21, horizontal, without cabinet, AC-Motor	1	\$ 3,312.00
AET-AES-SHP38HCSP4DX	Aertesi Soffio HP 38, horizontal, without cabinet, AC-Motor	1	\$ 5,532.00
AET-AES-SHP81HCSP4DX	Aertesi Soffio HP 81, horizontal, without cabinet, AC-Motor	1	\$ 7,662.00
AET-AES-SHP91HCSP4DX	Aertesi Soffio HP 91, horizontal, without cabinet, AC-Motor	1	\$ 9,618.00
AET-AES-SHP101HCSP4DX	Aertesi Soffio HP 101, horizontal, without cabinet, AC-Motor	1	\$ 11,683.00
AET-AES-SHP121HCSP4DX	Aertesi Soffio HP 121, horizontal, without cabinet, EC-Motor	1	\$ 20,010.00
Aertesi Brezza Single			
AET-AES-BRE53	Aertesi Brezza 53, cassette, 600x600, AC-motor, excl. panel	1	\$ 2,914.00
AET-AES-BRE93	Aertesi Brezza 93, cassette, 600x600, AC-motor, excl. panel	1	\$ 3,054.00
AET-AES-BRE-MPKC	Aertesi Brezza Return/Diffuser Panel, metal, fixed coanda	1	\$ 506.00
AET-AES-BRE-MPKD	Aertesi Brezza Return/Diffuser Panel, metal, adjustable	1	\$ 569.00
Blauberg ALB			
BLA-FCU-ALB-25	Blauberg ALB-25 High Airflow Fan Coil Unit for Heating & Cooling	1	\$ 2,548.00
BLA-FCU-ALB-30	Blauberg ALB-30 High Airflow Fan Coil Unit for Heating & Cooling	1	\$ 2,710.00
BLA-FCU-ALB-45	Blauberg ALB-45 High Airflow Fan Coil Unit for Heating & Cooling	1	\$ 3,013.00
BLA-FCU-SGWH	Blauberg SGWH Control Box for ALB Series (required)	1	\$ 905.00
BLA-FCU-MLCD E2	Blauberg MLCD E2 Controller with wall panel and remote control	1	\$ 190.00
BLA-FCU-UM-ALB	Blauberg UM ALB Vertical Blow Wall Bracket for ALB Series	1	\$ 34.00
BLA-FCU-UM-ALB-25	Blauberg UM ALB 25 Degree Blow Wall Bracket for ALB Series	1	\$ 243.00
BLA-FCU-UM-ALB-30	Blauberg UM ALB 30 Degree Blow Wall Bracket for ALB Series	1	\$ 275.00
BLA-FCU-UM-ALB-45	Blauberg UM ALB 45 Degree Blow Wall Bracket for ALB Series	1	\$ 356.00

The most efficient way to heat and cool

Efficiency of Heat-Pumps

Around the world the important role of Inverter heat-pumps is increasingly recognised. With COP factors of up to 5 (1kw electrical energy transformed to 5kw heating energy), heat pumps are far superior over other heat sources. In comparison, electrical oil-radiator heaters have a COP of 1.

Multi Task Champion

A single hydronic heat-pump can heat and cool two separate water tanks on demand. With the right size of unit and its DC-Inverter technology, it can serve multiple applications, such as:

- Fan Coil Units
- Domestic Hot Water
- Underfloor Heating
- Towel Rails
- Swimming Pools



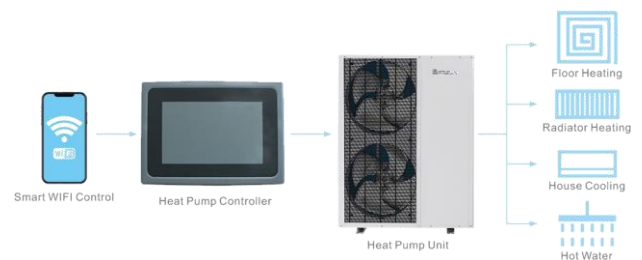
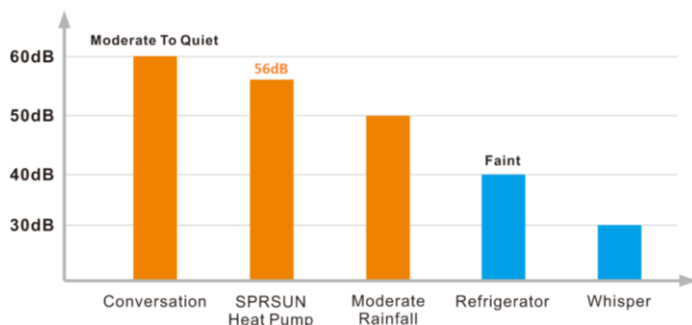
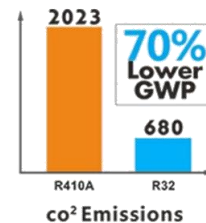
Hydronic Heat-Pumps

Hydronic heat-pumps are mono-block units. This means that the heat exchange happens all within the outdoor unit. No refrigerant outside the heat-pump is required, only water. That eliminates the risk of refrigerant leaks inside the house and is beneficial to the environment, as only a relatively small amount of refrigerant is required.



SPRSUN is supplying hydronic heat-pumps to the NZ market, with the design and layout optimised for the harsh NZ weather conditions. With the initial design and engineering from Germany, market leader components from Japan and cost-efficient production in China, the units offer remarkable performance and quality for an affordable price. Highlights are:

- A+++ rating for efficiency
- Environment-friendly refrigerant
- Fast heating/cooling speed
- Low-noise operation
- Smart control and internet module
- Intelligent Defrosting





6.0 – 15.8kW Units



19.8 – 21.8kW Unit

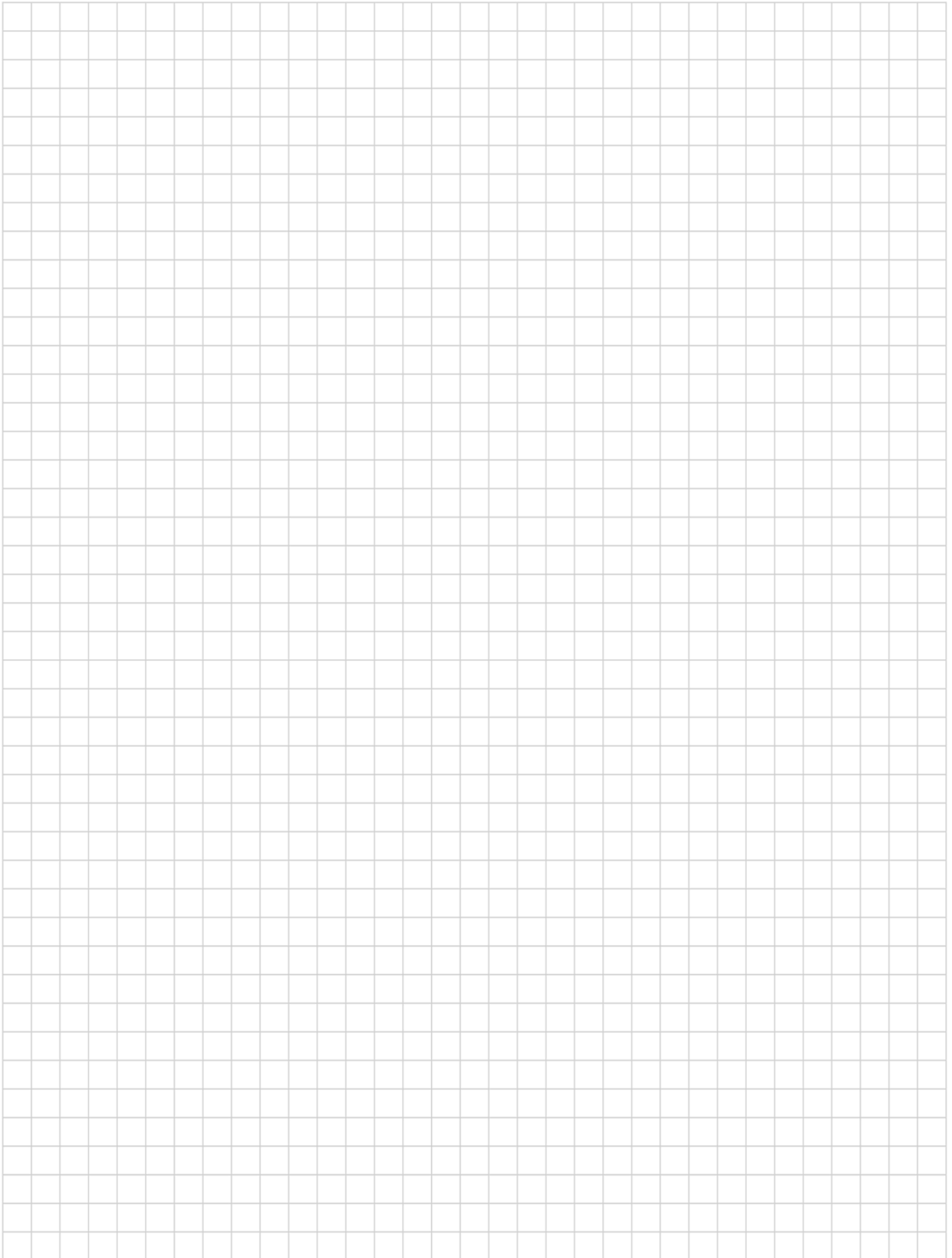
DC-Inverter Models	Power in V	Heating Capacity in kW (max.)	Cooling Capacity in kW (max.)	Noise in dB(A)	Dimensions (LxDxH) in mm	Weight in kg
CGK015V3L-B	220-240	6.0	5.5	49	990*375*655	52
CGK025V3L-B	220-240	9.4	8.6	56	1110*475*810	78
CGK030V3L-B	220-240	11.6	10.6	59	1110*475*810	88
CGK040V3L-B	220-240	15.8	14.4	60	1110*475*960	98
CGK050V3L-B	220-240	19.8	18.1	61	1110*475*1355	124
CGK060V3L-B	220-240	21.8	19.9	62	1110*475*1355	124



Price List

Item	Model	MOQ	NZD each incl. GST
DC-Inverter Heat-Pumps			
WAR-HPS-CGK015PCR32	Sprsun Hydronic Inverter R32 Heat Pump 6.0kW	1	\$ 5,785.00
WAR-HPS-CGK025PCR32	Sprsun Hydronic Inverter R32 Heat Pump 9.5kW	1	\$ 6,900.00
WAR-HPS-CGK030PCR32	Sprsun Hydronic Inverter R32 Heat Pump 11.6kW	1	\$ 7,648.00
WAR-HPS-CGK040PCR32	Sprsun Hydronic Inverter R32 Heat Pump 15.0kW	1	\$ 9,085.00
WAR-HPS-CGK050PCR32	Sprsun Hydronic Inverter R32 Heat Pump 19.8kW	1	\$ 10,465.00
WAR-HPS-CGK060PCR32	Sprsun Hydronic Inverter R32 Heat Pump 22.0kW	1	\$ 12,420.00
Buffer Tanks			
WAR-HPS-BUFFTANK60	Sprsun Buffer Tank 60L	1	\$ 755.00
WAR-HPS-BUFFTANK150	Sprsun Buffer Tank 150L	1	\$ 901.00
Accessories			
WAR-HPS-HPRM1SET	Heat Pump Feet Set	1	\$ 41.00

Notes



July 2023 Price Lists

All items subject to availability ▪ All prices excl. freight and subject to change ▪ Solutionair's Terms & Conditions apply



Phone

0800 484 3269

Email

enquiries@solutionair.co.nz

Web

www.solutionair.co.nz