

5b Konini Rd, Titirangi

Colour Scheme, Materials & Finishes

Version 2

Sheet Index

| Sheet No | Sheet Title / Description                                                                       |
|----------|-------------------------------------------------------------------------------------------------|
| -        | Cover Sheet / Sheet Index                                                                       |
| A01      | Proposed Layouts with Finishes Specifications                                                   |
| A02      | New Ensuite Plan & Elevation with Materials & Finishes Specification                            |
| A03      | New Ensuite Birds Eye & Perspective Views with Fixtures & Fittings Specifications               |
| A04      | Kitchen Birds Eye & Perspective Views with Fixtures, Fittings & hardware Specifications         |
| A05      | Kitchen Perspective & Elevation with Materials & Finishes Specification                         |
| A06      | Laundry Plan, Elevation & Perspective Views with Materials & Finishes & Fittings Specifications |
| A07      | Master Bedroom, En-suite & Walk-in Robe Birds Eye & Perspective Views                           |
| A08      | Walk-in Robe Plan, Sectional Elevations with Materials Finishes & Hardware Specifications       |





PROPOSED LAYOUT PART VIEW



Resene Barely There  
to ceilings, door and window architraves, skirting and scotias; also to walls in laundry and new en-suite and kitchen as shown



Resene Quarter Dusted Blue  
to walls  
but not in laundry and new en-suite; and only to 3x walls in kitchen (refer layout for clarification)



Resene Snapshot  
to feature wall over Wallpaper



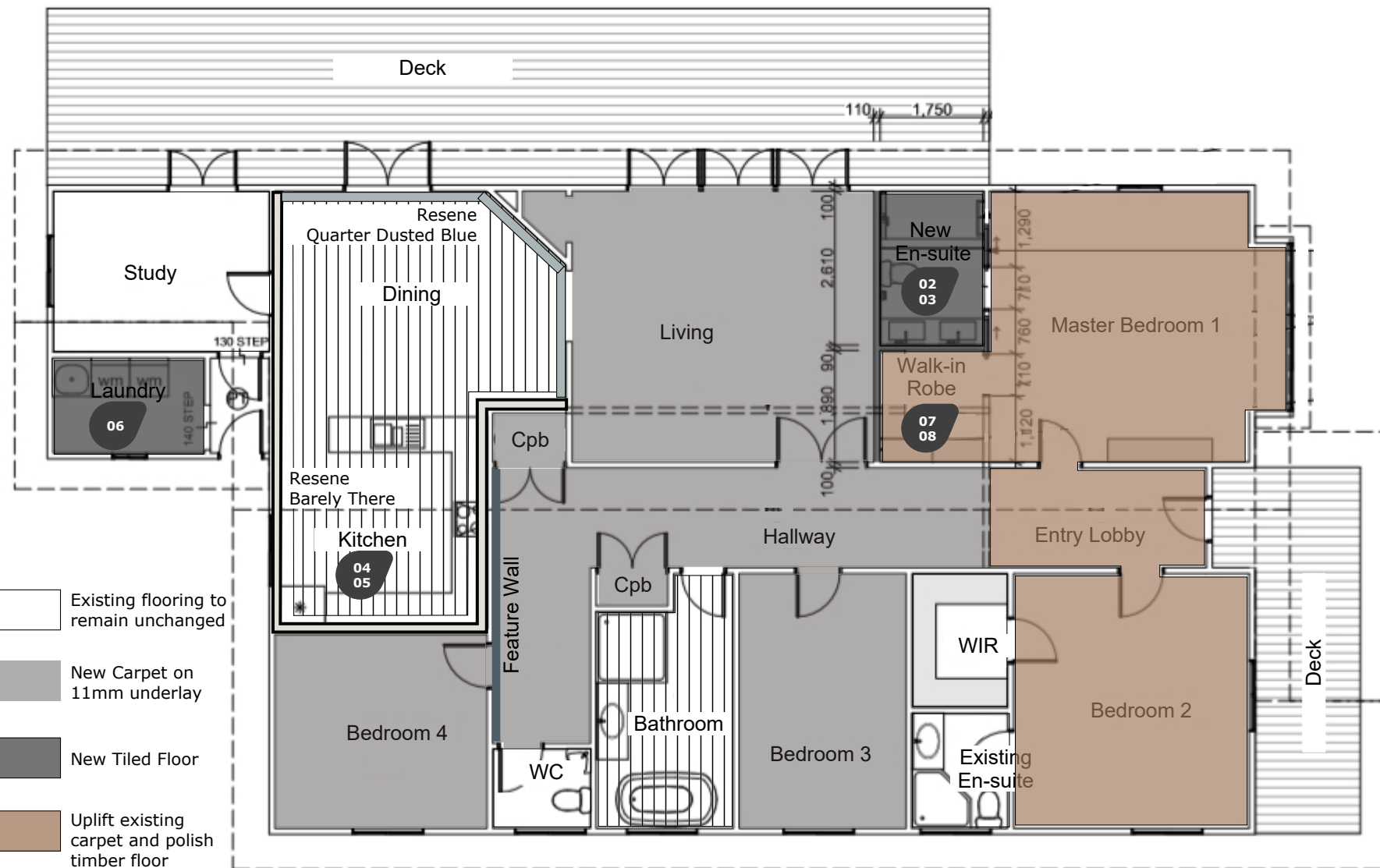
Aspiring Walls Focus Collection Paintables RD80027







Flooring Studio  
Norman Ellison  
Tongariro  
Lahar  
Carpet with 11mm underlay



Tile Warehouse  
Element  
Arabesque  
203x203  
to Laundry & En-suite floor



PROPOSED LAYOUT

-  Existing flooring to remain unchanged
-  New Carpet on 11mm underlay
-  New Tiled Floor
-  Uplift existing carpet and polish timber floor



October 8, 2019

V2

NOTE: This Document is to be read in conjunction with the architectural drawings and specifications prepared by CASA Consulting Group.

5b Konini Rd, Titirangi | Internal Alterations / Reconfigurations

**Proposed Layout with Finishes & Material Specifications**  
scale: 1:100 @ A3

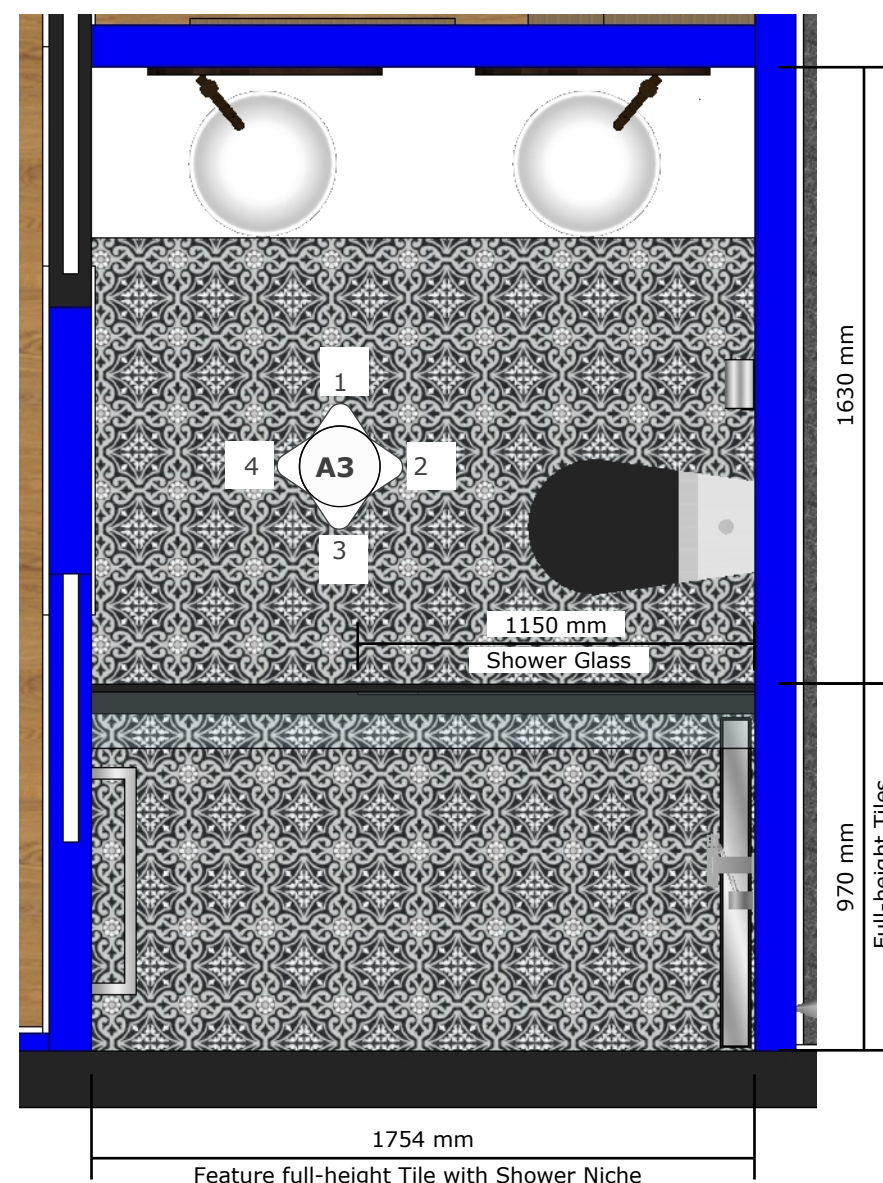
A  
01

A 01

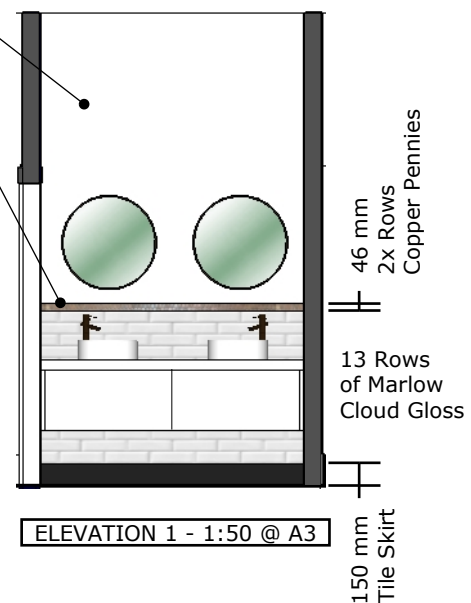


Resene Barely There to painted part of walls and ceiling

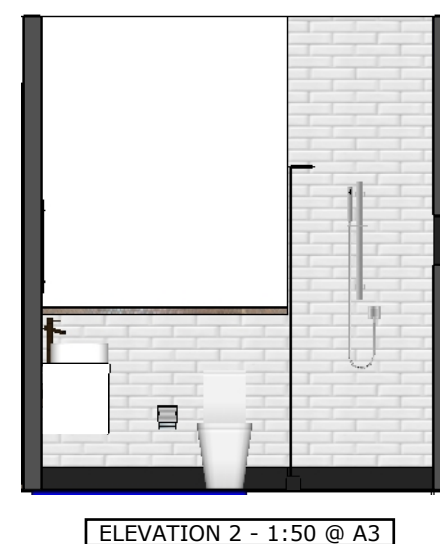
Matt Black Round Tile Edge to top



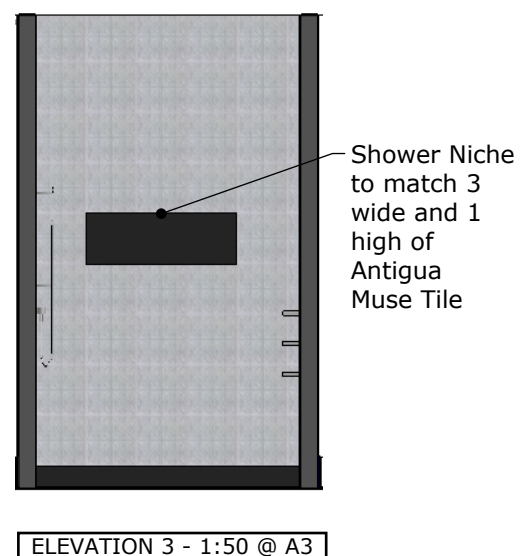
ENSUITE PLAN VIEW - 1:20 @ A3



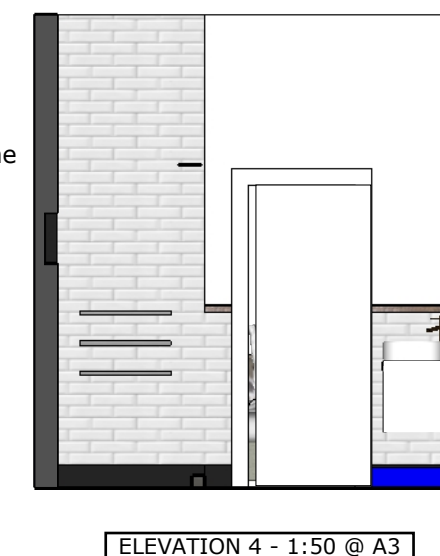
ELEVATION 1 - 1:50 @ A3



ELEVATION 2 - 1:50 @ A3



ELEVATION 3 - 1:50 @ A3



ELEVATION 4 - 1:50 @ A3



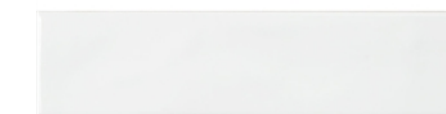
Resene Barely There to walls and ceiling



Tile Depot  
Matt Black Round Tile Edge  
as tile trim to top of Copper Pennies



Tile Warehouse  
Copper Penny Rounds  
as top trim 2 rows only  
with 4x coats of  
Everbrite  
Protecta Clear  
Long Term Metal Protection

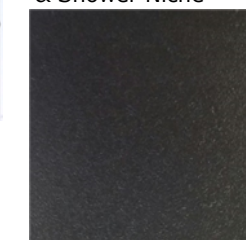


Tile Space  
MT1366  
Marlow Cloud Gloss  
75x300  
to Splashback



Tile Depot  
Antigua Muse  
White  
333x333  
to feature shower wall

Tile Warehouse  
Pure Black Matt  
600x600  
to Tile Skirting, Hebel  
& Shower Niche



Tile Warehouse  
Element  
Arabesque  
203x203  
to floor

Ensuite Plan & Elevations with  
Finishes Specifications

scale: as shown

NOTE: This Document is to be read in conjunction with the architectural drawings and specifications prepared by CASA Consulting Group.



October 8, 2019

V2

5b Konini Rd, Titirangi | Internal Alterations / Reconfigurations

A 02





Waterware  
Liberty Range  
Tall Basin Mixer  
FWL9809A  
Oil Rubbed Bronze



Waterware  
Liberty Range  
Clickclak Waste with Overflow  
FWL92690  
Oil Rubbed Bronze



Newtech  
Quarto Round  
Vessel Basin



Newtech  
Milazzo  
Modular  
Vanity Cabinet



Waterware  
Liberty Range  
Toilet Roll Holder  
FWL8989  
Oil Rubbed Bronze



Plumline  
Impero BTW Toilet Suite  
0411N.1211N  
with  
Impero Soft Close Black Gloss Seat  
C81113



Waterware  
Liberty Range  
Towel Ring  
FWL8985  
Oil Rubbed Bronze

Waterware  
Liberty Range  
Double Towel Rail  
FWL8982  
Oil Rubbed Bronze



Waterware  
Liberty Range  
Shower Tower & Mixer  
FWL7629  
Oil Rubbed Bronze



ENSUITE BIRDS EYE VIEWS - NOT TO SCALE

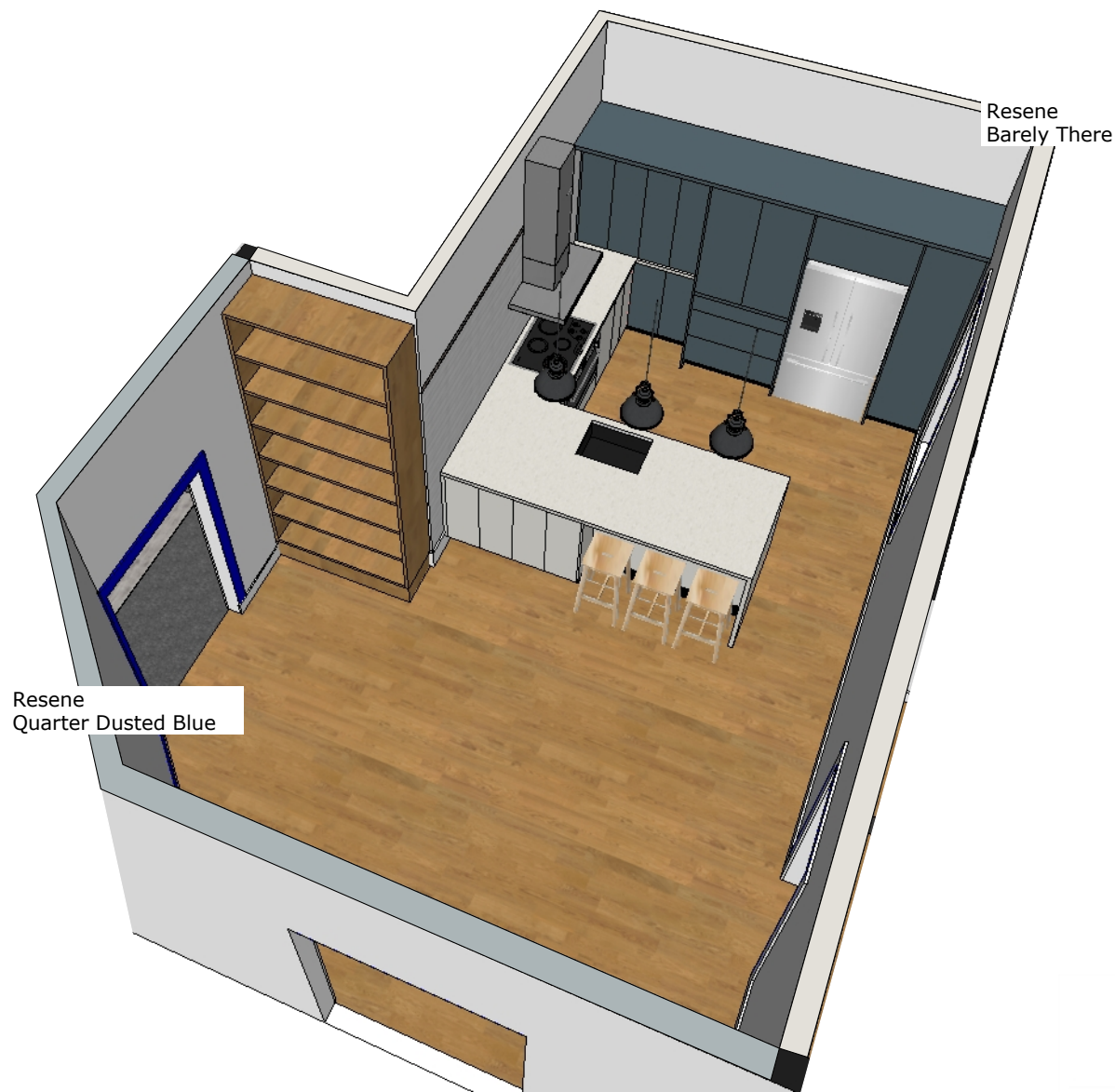


ENSUITE PERSPECTIVE - NOT TO SCALE

**Ensuite Birds Eye & Perspective  
Views with Fixtures & Fittings**  
scale: as shown

NOTE: This Document is to be read in conjunction with the architectural drawings and specifications prepared by CASA Consulting Group.





Resene  
Quarter Dusted Blue

Resene  
Barely There

KITCHEN & DINING BIRDS EYE VIEW - Scale: not to scale



KITCHEN PERSPECTIVE VIEW - Scale: not to scale



Astrum Lighting  
Prolux  
Exotic Range  
PX38044  
Dark Antique Pewter  
with Bulb



Resene  
Barely There  
to walls and ceiling  
in kitchen



Resene  
Quarter Dusted Blue  
to dining room walls  
(as shown in Birds Eye View)



Acero  
Mercer DV Series  
Brighton 1 1/2 Bowl  
Left Hand  
DV203-L  
Supplied by My Kitchen Makeover



Stefano Orlatti  
Provincial Handles  
3440 Matt Antique Brass  
Supplied by My Kitchen Makeover



Plumblime  
Classic Kitchen Mixer  
with pull-out Spray  
3420  
Raw Brass OG  
Brushed Brass OS  
(Finish TBC)  
with Metal Lever  
ML

**Kitchen Elevation & Perspective  
View with Fixtures & Fittings**

scale: as shown

NOTE: This Document is to be read in conjunction with the architectural drawings and specifications prepared by CASA Consulting Group.



October 8, 2019

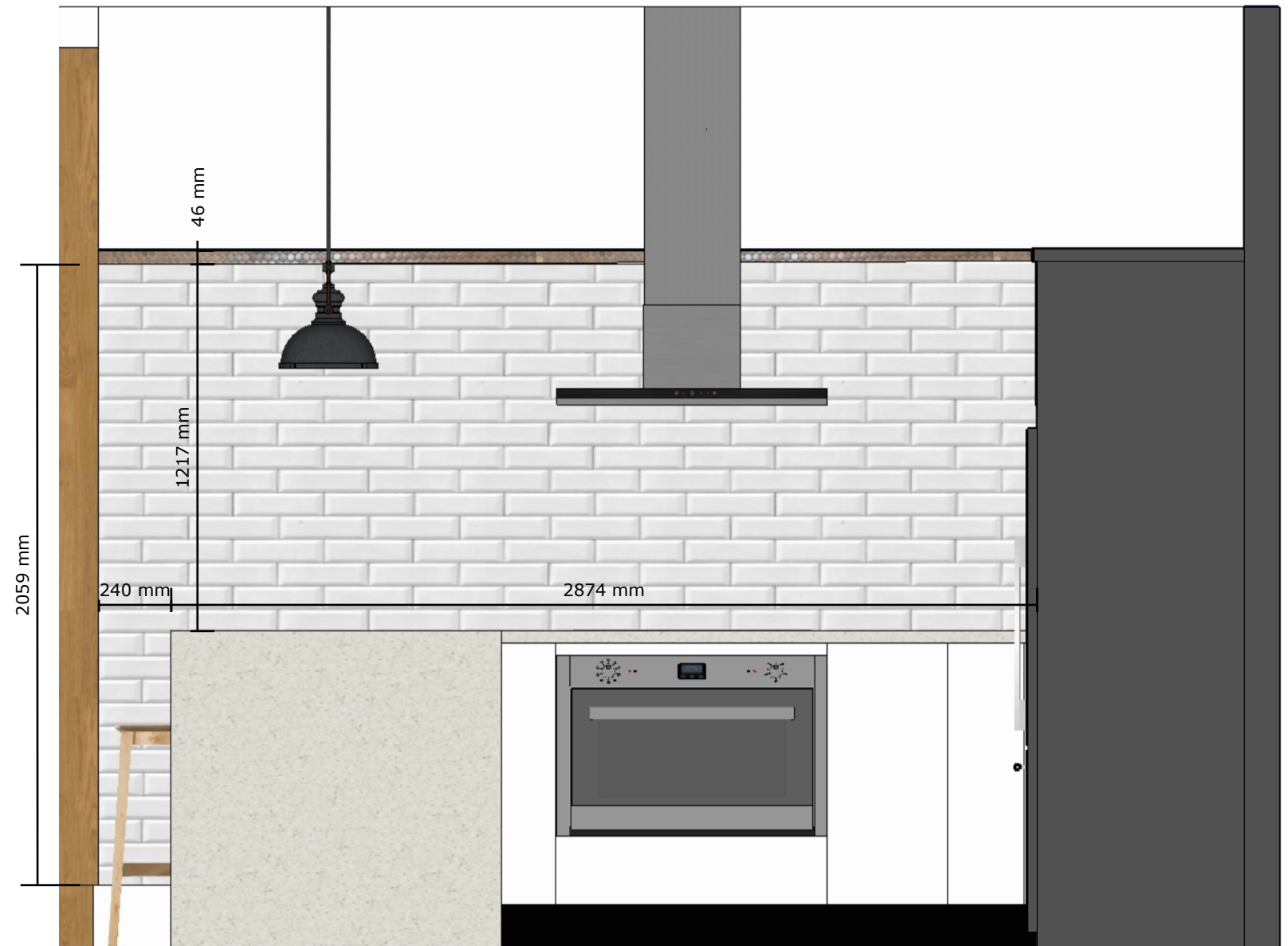
V2

5b Konini Rd, Titirangi | **Internal Alterations / Reconfigurations**

A 04



KITCHEN PERSPECTIVE VIEW - Scale: not to scale



KITCHEN ELEVATION - Scale: 1:20 @ A3



Smartstone  
Santorini Collection  
Gelsomino  
to benchtop



Resene  
Barely There  
to cabinetry

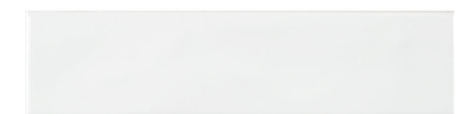
Resene  
Snapshot  
to high wall cabinetry



Tile Depot  
Matt Black Round Tile Edge  
as tile trim to top of Copper Pennies



Tile Warehouse  
Copper Penny Rounds  
as top trim 2 rows only  
with 3x coats of  
Everbrite  
Protecta Clear  
Long Term Metal Protection



Tile Space  
MT1366  
Marlow Cloud Gloss  
75x300  
to Splashback



October 8, 2019

V2

NOTE: This Document is to be read in conjunction with the architectural drawings and specifications prepared by CASA Consulting Group.

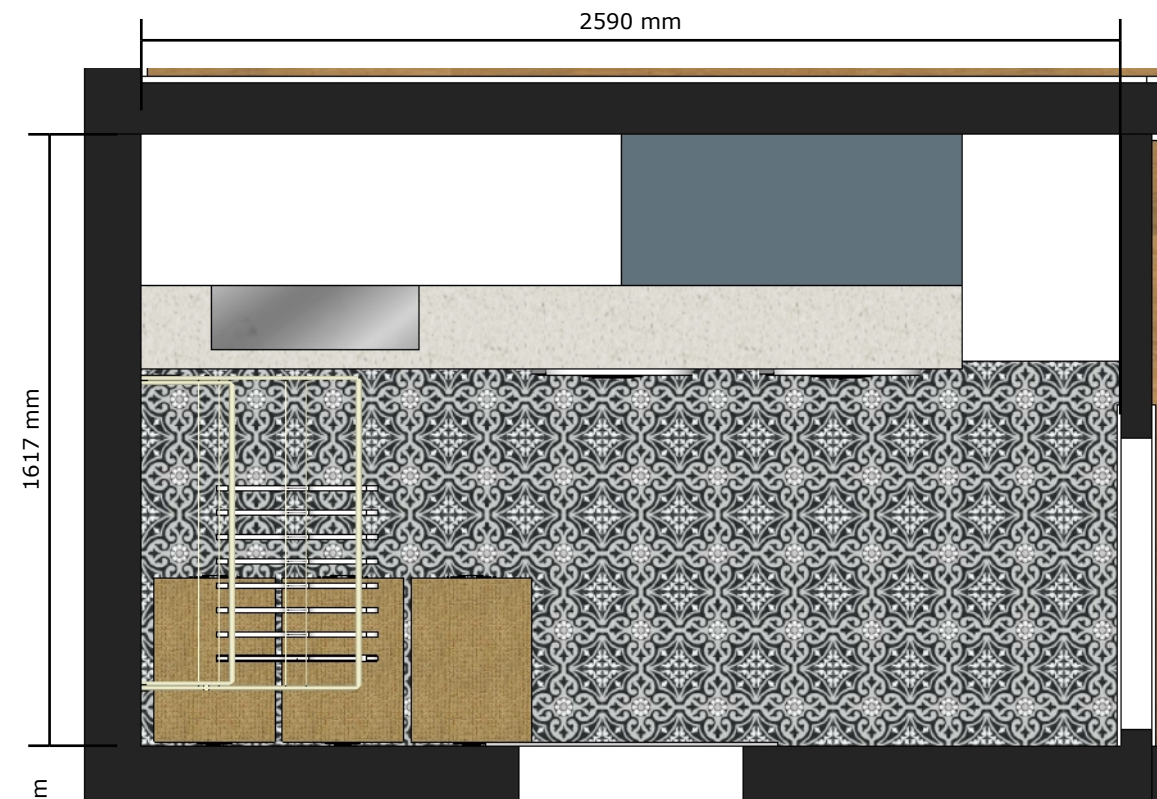
5b Konini Rd, Titirangi | **Internal Alterations / Reconfigurations**

**Kitchen Elevation & Perspective  
View with Finishes Specifications**  
scale: as shown

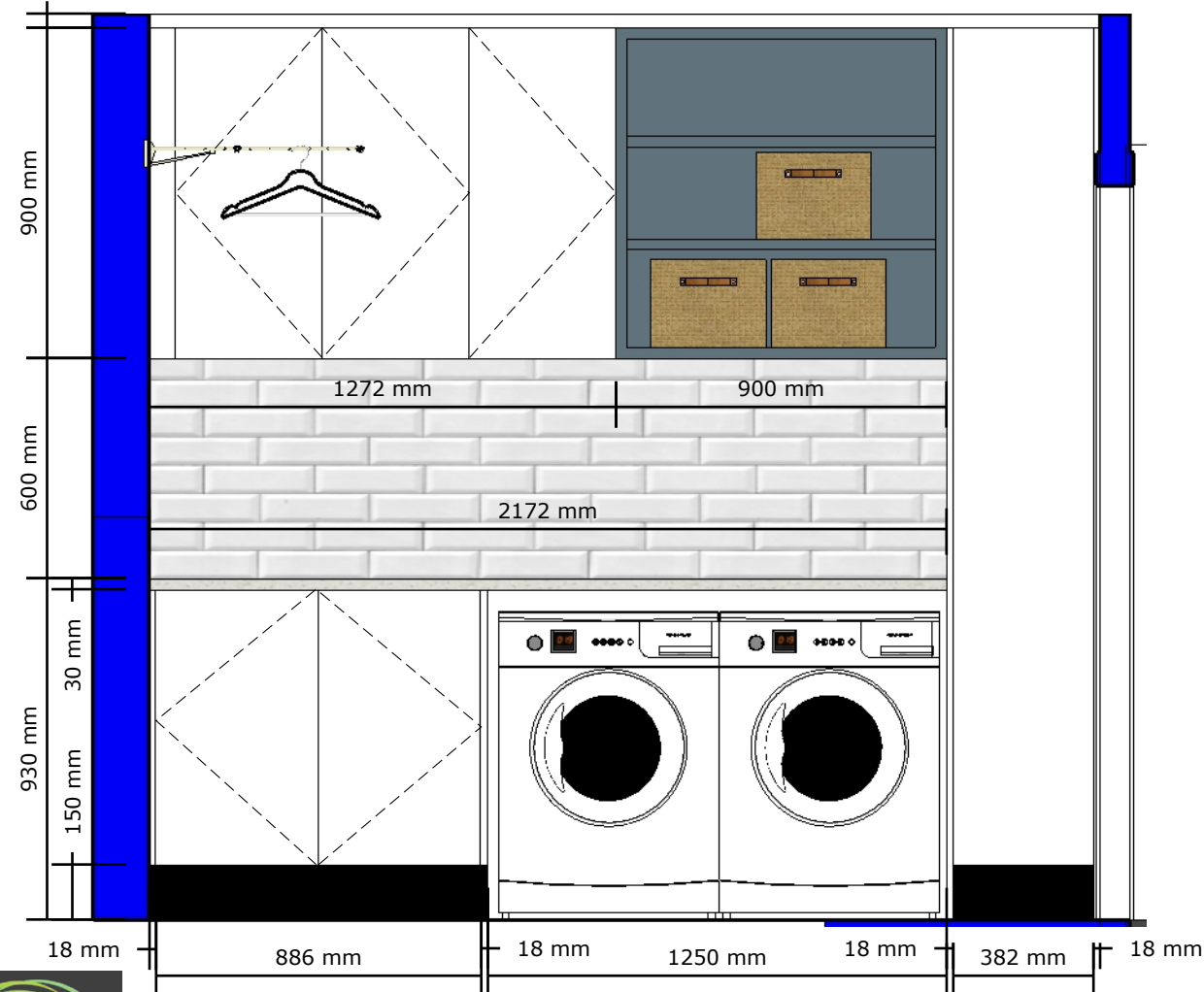
A  
05

A 05





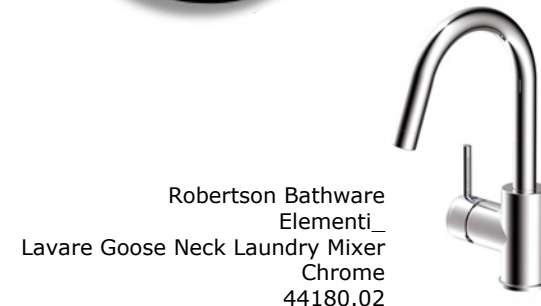
LAUNDRY PLAN VIEW - Scale: 1:20 @ A3



LAUNDRY ELEVATION - Scale: 1:20 @ A3



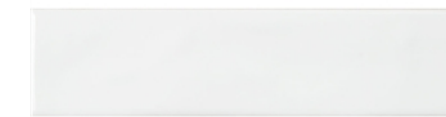
Resene  
Barely There  
to walls and ceiling



Robertson Bathware  
Elementi\_  
Lavare Goose Neck Laundry Mixer  
Chrome  
44180.02



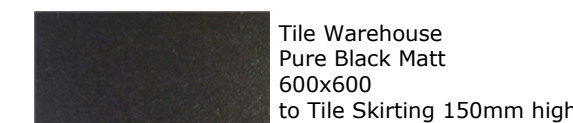
Acero  
Mercer  
DV Series  
Derby Single Bowl  
DV107  
or as per quote by The Kitchen Place  
(tbc by client)



Tile Space  
MT1366  
Marlow Cloud Gloss  
75x300  
to Splashback



Tile Warehouse  
Element  
Arabesque  
203x203  
to floor



Tile Warehouse  
Pure Black Matt  
600x600  
to Tile Skirting 150mm high



LAUNDRY PERSPECTIVE VIEW - Scale: not to scale



Ice Snow Engineered Stone  
by The Kitchen Place



Stefano Orlatti  
Provincial Handles  
3440 Matt Antique Brass



Melteca  
Warm White  
Naturale



Melteca  
Winter Sky  
Naturale

**Laundry Plan, Elevation & Perspective Views with Finishes Specifications**  
scale: as shown

NOTE: This Document is to be read in conjunction with the architectural drawings and specifications prepared by CASA Consulting Group.





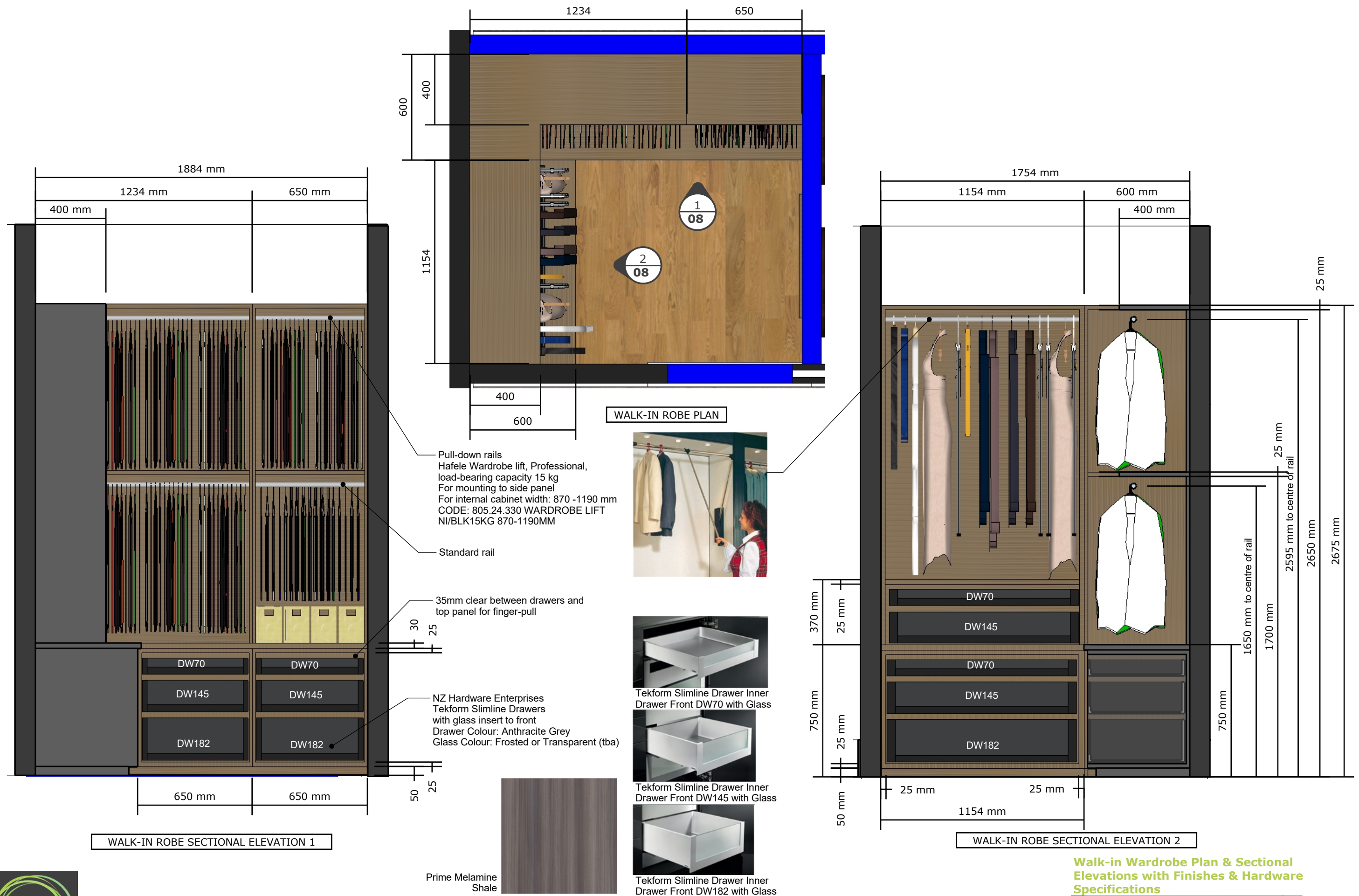


BIRDS EYE VIEW OF MASTER BEDROOM EN-SUITE & WALK-IN ROBE



WALK-IN ROBE PERSPECTIVE VIEW





**Walk-in Wardrobe Plan & Sectional Elevations with Finishes & Hardware Specifications**

scale: 1:20 @ A3

A  
08

NOTE: This Document is to be read in conjunction with the architectural drawings and specifications prepared by CASA Consulting Group.



October 8, 2019

V2

5b Konini Rd, Titirangi | **Internal Alterations / Reconfigurations**

A 08