

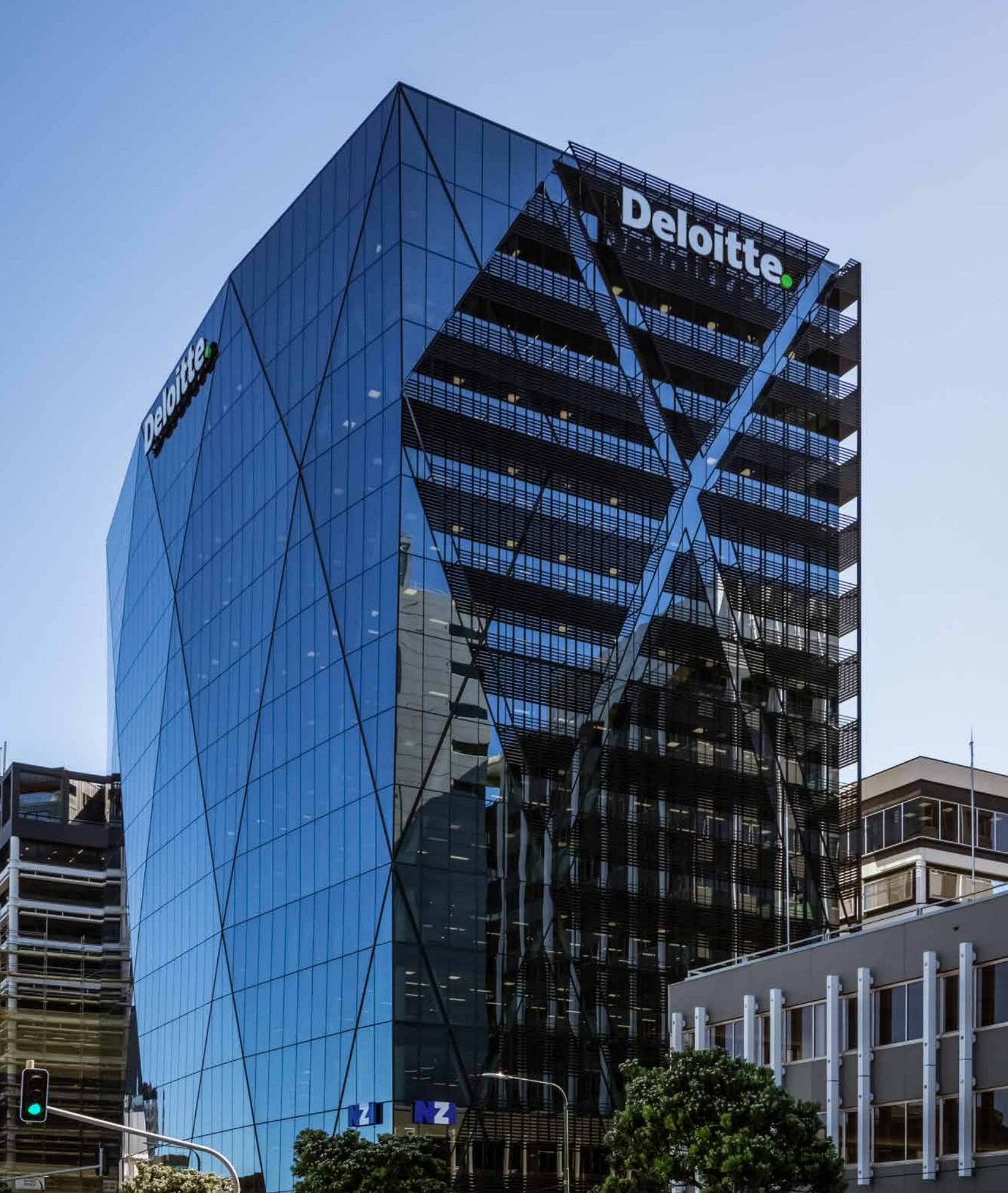
BUILDING GLAZING SOLUTIONS



  
**WoodsGlass**  
BUILDING GLAZING SOLUTIONS

[WOODSGLASS.CO.NZ](http://WOODSGLASS.CO.NZ)





# NEW ZEALAND OWNED AND OPERATED

**WOODS GLASS WAS ESTABLISHED IN 1986, AND IS PROUDLY 100% NZ OWNED AND OPERATED.**

Woods Glass is a recognised leader in commercial glazing and architectural glass supply in New Zealand

Our company mission since inception was to establish a specialist commercial glazing company committed to providing quality "Building Glazing Solutions" for the New Zealand building industry.

As part of our commitment to deliver high quality products and solutions, we continue to reinvest heavily to extend our capability as more demands are placed on our industry.

We have assembled the most experienced team of glass professionals in New Zealand,

operating nationwide with branches in Auckland, Wellington and Christchurch. We work alongside our Thermosash Group companies, Thermosash Commercial and Insite Facades.

We have a proven track record, having completed some of the largest and most successful commercial glazing contracts in New Zealand.

---

**LEFT: 20 CUSTOMHOUSE QUAY**  
Customhouse Quay, Wellington CBD

**PRODUCT**  
ThermalPlus™, Infnit E™





# SOURCING & SUSTAINABILITY

AUCKLAND: 09 525 3379 | WELLINGTON: 04 913 1999 | CHRISTCHURCH: 03 366 3733

## WOODS GLASS SUSTAINABLY BUILDS FUTURES FOR OUR PEOPLE, OUR COMMUNITY AND OUR CUSTOMERS.

Sustainability is one of Woods Glass' core strategic priorities. Through continuous development we are able to provide customers and the community with innovative, world leading facade solutions designed specifically for the New Zealand environment.

Woods Glass reduce the environmental impact of our processing and construction activities through sustainability focused design, sourcing and production methods.

Our aluminium extrusions are sourced from McKechnie's Aluminium - the only aluminium extruder to achieve diamond level third-party CEMARS™ environmental certification. This means they emit 90% less carbon in producing their materials than the global average.

We have a minimum 85% recycled aluminium in our window suites and we recycle all our off-cuts and scrap aluminium back through their re-melt facility.

Woods Glass aim to minimise any waste that is sent to landfill by recycling glass, timber, polystyrene, metal, aluminium and batteries through responsible channels.

We are committed to the environment and a member of New Zealand Green Building Council. We have a Green Star Accredited Professional who has an in-depth knowledge in healthy, less polluting green building practices.



**CHRISTCHURCH BOTANIC GARDENS**  
Christchurch CBD

**PRODUCT**  
Keramo™

**ROYAL AUCKLAND AND GRANGE GOLF CLUB**  
Grange Road, Papatoetoe, Auckland

**PRODUCT**  
EnduraLam™, Autodoors





## SERVICE & EXPERTISE

### DESIGN

Woods Glass and Thermosash Commercial have a team of design engineers, draughtsman and specialists experienced in façade systems and glass structures.

Due to the unique make-up of our team, we can provide design expertise second to none. Our designers operate computer aided drawing packages as well as finite element analysis software and CAD/CAM manufacturing packages to assist our teams deliver projects.

### ENGINEER

Our engineering is the heart of all the projects we undertake. We ensure the designs comply with the NZ Building code, are designed for the proposed purpose and are safe. At Woods Glass we offer our expertise to engineer bespoke glass solutions, and we are able to conduct testing in an independently assessed façade test rig for wind, water and seismic conditions, so we don't just design it - we can test it.

Our in house professional structural and façade engineers specifically assess each façade design for structural and environmental (seismic and wind) loading, and ensure that the façade solution and building-in condition meets code requirements. We have designed many specific engineered solutions to meet the aesthetic intent of our clients' design and imposed engineering challenges.

Our capability to custom engineer fixing systems and manufacture locally where necessary gives us the confidence only the highest quality materials are used in our systems. We also ensure that specialist fittings and hardware are engineered and tested so the complete structural glass system with perform.

### PWC OFFICES

Queen St, Auckland CBD

### PRODUCT

TwinPane™, Keramo™







## COST

The cost of quality is often underestimated, but never forgotten when a problem occurs. Cost is directly related to quality and performance and Woods Glass use a range of local and international suppliers to best fit the project budget. Our team of professionally trained Quantity Surveyors (QS) are highly experienced in quoting complex projects, providing certainty around your project's budget.

## PROGRAMME

The facade is a critical element in construction, and construction programmes are often tight. Our team of experienced project managers work closely with the client contractor and consultants from design to installation to ensure timely completion.

By employing our unique lifting and launching equipment we are able to manage and control the quality and productivity of the delivery of our end product, minimising time on site, aiding the programme where possible and managing time risk.

## CONSTRUCT

Successful project delivery requires experience and capable tradespeople, at Woods Glass we have a team of trade trained glaziers and specialist installers.

As buildings become more complex and adventurous in shape and form, so does the challenges for our designers, engineers and installation teams. We believe that the successful completion of projects within scheduled requirements demands innovative solutions from concept to site. To facilitate this, we constantly reinvest in our machinery and plant and have a wide range of the latest equipment from dedicated glazing robotic mini-cranes through to in-house 20 tonne cranes, all with

our own trained operators, to assist with the installation of façades to tight programmes and tolerances.

Our trained staff are experienced at working at height with the latest access equipment in accordance with our safe work method statements.

Woods Glass are not just commercial glaziers - we also employ specialist metal workers and installers so that we can offer a total building glazing solution to our clients.

---

**DARK SKY PROJECT**  
Motuariki Lane, Tekapo

**PRODUCT**  
ThermalPlus™





#### COMPLIANCE

Compliance is a critical element of construction industry delivered projects. Alignment and delivery of bespoke designs necessitates the provision of producer statements (PS1 design, PS2 design review, PS3 construction, PS4 construction review). Woods Glass has in house engineers and producer statement authors who can streamline this process.

#### QUALITY

Woods Glass work hard with their suppliers to ensure high quality glass products are used and then work equally hard to ensure the onsite completed work is of the highest quality.

We acknowledge that our next project with our clients will be assessed from our last project - that is why we only use the very best materials available to ensure durability and longevity of the glass solutions we provide.

Our experienced factory and site glazing teams undertake the assembly within strict quality control guidelines assessing performance, tolerance and quality.

#### PERFORMANCE

We have a team of dedicated project managers, team leaders and glaziers who take pride in their work and ensure the completed project performs long term. Woods Glass pride comes from on-site performance and delivery as this is the key to a sustainable business.

#### SAFETY AND TRAINING

Our people work at the leading edge of New Zealand building projects and with that comes the risk of injury. The training we give our people ensures that task analyses are completed for every unique aspect of a project, covering planning, strategies and all aspects of operational safety to keep our team safe at all times while ensuring on-site performance.

#### VALUE

The building industry has passed more and more responsibility with performance specifications, tight lead times and fast track construction programmes onto the window industry. Woods Glass continue to invest heavily in the best plant, technology and training to ensure we offer the highest value solution to our customers. We pursue innovation and expertise to be world class leaders in building glazing solutions.

---

#### SUNSET WEST APARTMENTS

Victoria St, Wellington CBD

#### PRODUCT

Apollo Balustrades



## OTHER SERVICES

### MAINTENANCE

Woods Glass can offer a maintenance service to check all moving and wearing parts to maintain warranties and extend the life of your investment. Regular cleaning and maintenance are often overlooked. It's typical for façade and glazing projects to look pristine on completion, but it's of equal importance to maintain the investment with programmed maintenance.



### REGLAZING

Glass can break, and replacement can be a complex process due to access and size of the glazing. Woods Glass work nationwide with clients and insurance companies to provide solutions for re-glazing large and complex projects.



### LIFTING AND HANDLING

Woods Glass have access to some of the worlds most advanced lifting and handling equipment suitable for glass and other flat products enabling us to complete new, refurbishment and maintenance work.



SYLVIA PARK  
Mt Wellington Highway, Mt Wellington, Auckland

PRODUCT  
Infinit E™, TotalVision









## GLASS PRODUCTS

### **ENDURALAM™ | LAMINATED SAFETY GLASS**

EnduraLam™ is a Grade A Safety Glass. It provides increased safety from the lamination film that holds together if broken, whether in a vertical or overhead position, reducing the likelihood of serious injury. It can also offer increased security as the glass will generally remain in the frame after fracture.

EnduraLam™ has some size limitations depending on the process, but Woods Glass has access to some of the largest lamination manufacturing sizes available in the industry.

### **INFINIT E™ | LOW-E COATING**

Infini E™ is a special Low Emissivity coating that is designed to increase the thermal performance of windows and reduce heat transfer.

The coating helps to prevent heat escaping the building during winter, and at the same time due to its high clarity, allows free passive heating

from the sun to warm the building, contributing to potentially reduced energy loading on the building.

### **KERAMO™ | CERAMIC FRITTED GLASS**

Keramo™ glass utilises a ceramic frit pattern often known as “fritted” glass. Keramo™ ceramic glass frit is a special enamel paint and colour oxide that are fired onto the glass surface.

Keramo™ is ideal to use in conjunction with EnduraLam™ and a Woods Glass solar control product like Infini E™. This allows for enhanced glare and solar control as well as privacy and aesthetic designs.

---

**COMMERCIAL BAY PODIUM**  
Queen Street, Auckland CBD

**PRODUCT**  
Skyline™ Alpha, Keramo™



**SOUNDPANE™ | ACOUSTIC GLASS**

SoundPane™ is a laminated grade-A safety glass which is specifically designed to reduce the effects of noisy environments. By combining the effects of various thicknesses of glass with the acoustic interlayer, specific noise reduction properties can be achieved without compromising visual performance.

**ARUNDO™ | REEDED GLASS**

Reeded glass is an obscure glass offering an aesthetically pleasing and on-trend privacy glass.

Reeded glass provides a corrugated texture on the outside and comes in a variety of sizes and glass types. Laminated Reeded is available as well as monolithic.

**ULTRAVIS™ | HIGH CLARITY GLASS**

UltraVis™ is made from a high-quality silica which has approximately 75% less iron content than standard float glass, providing clearer glass with much higher light transmission. All other finishing processes are the same as EnduraLam™ and standard annealed glass.



**RIGHT: SKY CITY**  
Victoria Street West, Auckland CBD  
**PRODUCT**  
Arundo™

**TOP: DIOCESAN SCHOOL**  
Clyde Street, Epsom, Auckland

**PRODUCT**  
Infinet E™, TotalVision

**BOTTOM: FOOD STUFFS NORTH ISLAND**  
35 Landing Drive, Mangere, Auckland 2022

**PRODUCT**  
Curva™ Balustrades





#### OPTIPLUS | LOW REFLECTION GLASS

A standard glass surface can have an external reflection of 8% and these can impede the view, especially in high angles of incidence (viewing on an angle). To assist the clarity of the view, OptiPlus has a special surface coating which reduces the reflection down to 1% or less. With this coating applied, the glass appears to miraculously disappear, an ideal solution for retail, hospitality and car showrooms.

#### MIRRORLIGN™ | MIRRORED GLASS

The ability of mirrors to enhance an internal space should not be underestimated. Modern safety mirrors provide increased application possibilities. Glass mirror has a long-standing use in lining or cladding internal walls, and covering entire walls as at a dance studio or gym.

#### TWINPANE | ACOUSTIC GLASS SYSTEM

TwinPane is the combination of two panes of glass separated by an air gap, also known as secondary glazing. TwinPane is designed for use in office spaces where noise control is a very high priority. It would be beneficial to use TwinPane in places where sensitive information may be discussed, such as a meeting room. TwinPane is often used in conjunction with SoundPane™.

#### LAMBERT'S LINIT U GLASS

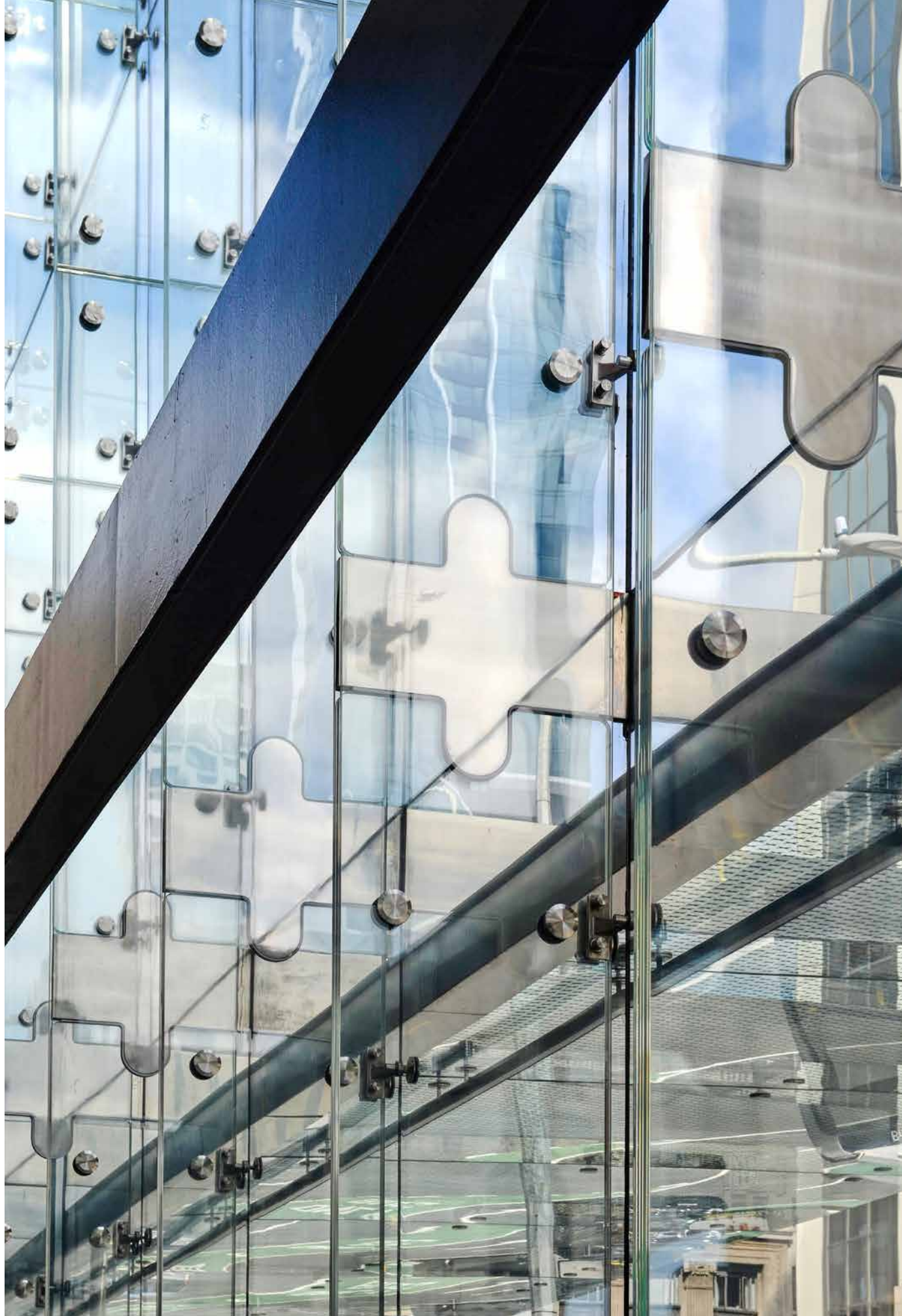
Woods Glass are proud to be the New Zealand representative for LINIT Glass products. The cast U-glass channels have an individual optical character which gives the effect of a lively, light refracting glass façade. There are many methods of installing these glass elements, including a unique Woods Glass engineered glazing channel system. At Woods Glass, we will help specify the appropriate product based on your design.

188 QUAY STREET LOBBY  
Quay Street, Auckland CBD

PRODUCT  
LINIT U-Glass







## COMMERCIAL BAY / STREET LOBBY

**WOODS GLASS IS PROUD TO PRESENT ONE OF THE MOST COMPLEX AND REWARDING PROJECTS IT HAS EVER BEEN INVOLVED IN - THE STREET LOBBY OF THE PWC TOWER AT COMMERCIAL BAY.**

The street lobby involved a frameless glass facade with all structural components made entirely of glass! The canopy was cantilevered off the structural glass fins with the result being a total vision system that has a serious wow factor.

Woods Glass used their UltraViz™ low iron glass products to ensure the greatest possible visibility through the facade in order to create the effect of a near invisible facade.

Keramo™ (ceramic fritted glass) was used for the SkyLign™ Edge glass canopies. This allowed for some solar shading to be incorporated into the aesthetic canopies.

EnduraLam™ (laminated safety glass) was used for the structural glass fins that made up the Total Vision glass facade. The huge 13 meter Fins utilised seven layers of laminated glass to ensure the strength of the system!









## OUR PROMISE

**WE REMAIN COMMITTED TO CONTINUALLY UPDATING OUR SKILLS AND IN-HOUSE TECHNOLOGY, PROVIDING INTERNATIONAL BEST PRACTICE GLASS SOLUTIONS TO THE NEW ZEALAND BUILDING INDUSTRY.**

We remain committed to continually updating our skills and in-house technology, providing international best practice glass solutions to the New Zealand building industry.

Woods Glass is focused on finding solutions to glass design concepts, including the concepts that others might say no to. Our team's technical ability, experience and expertise underpins everything we do, while our industry partners

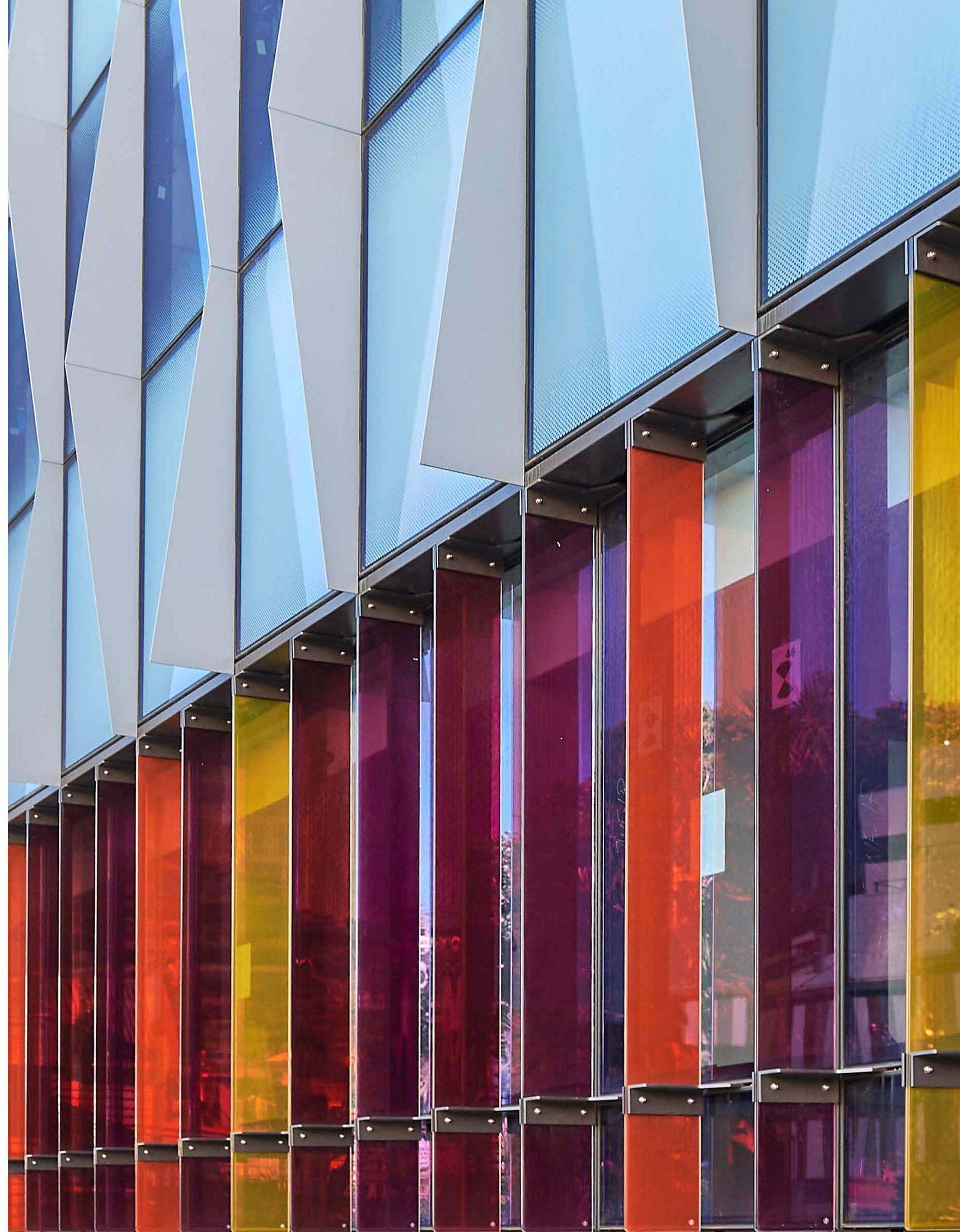
support, constantly train and audit us to ensure that our systems and procedures follow best practice.

When a proven track record in the commercial glass and glazing industry is combined with modern technology, equipment and experienced specialized staff, the result is a glazing company capable and willing to take on the responsibility of delivering high performance, durable, engineered building glazing solutions.



**WELLINGTON CHILDREN'S HOSPITAL**  
Mein Street, Newtown, Wellington

**PRODUCT**  
Keramo™, EnduraTint™





## WOODS GLASS WINDOWS AND DOORS

**WOODS GLASS PROVIDE  
ALUMINIUM JOINERY SOLUTIONS.  
FROM SOURCING TO  
MANUFACTURE TO INSTALL.**

We are partnered with OMEGA™ windows and Doors. OMEGA™ and McKechnie Aluminium are the only aluminium extrusion business in New Zealand to operate a remelt facility for recycling aluminium retaining all the aluminium's properties. CEMARS™ Third-party environmentally certified with a high recycled content and therefore low carbon footprint.

AUCKLAND: 09 525 3379 | WELLINGTON: 04 913 1999 | CHRISTCHURCH: 03 366 3733

**ELM APARTMENTS**  
Orakei Rd, Orakei, Auckland

**PRODUCTS**  
Architectural Series: Sliding Doors,  
Awning Windows, Hinged Doors,  
Bi-Fold Doors





# OUR PEOPLE



## WE HAVE ASSEMBLED THE MOST EXPERIENCED TEAM OF GLASS PROFESSIONALS IN NEW ZEALAND.

Operating nationwide, we have branches in Auckland, Wellington and Christchurch with the ability to work anywhere in New Zealand or the Pacific Islands.

Our people work at the leading edge of New Zealand building projects. Today we have a proven track record,

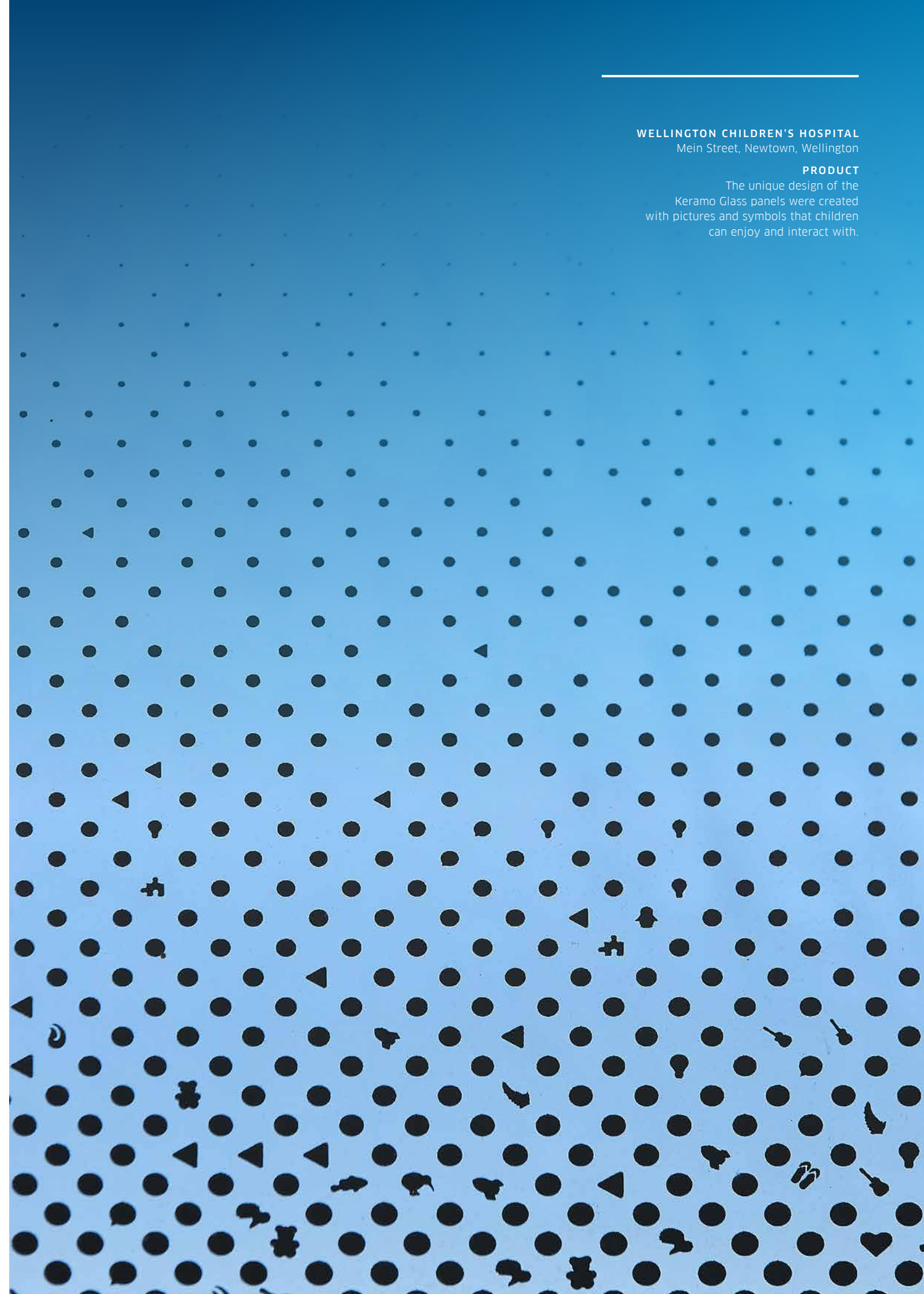
having completed some of the largest and most successful commercial glazing contracts in New Zealand.

We are always interested in receiving expressions of interest from experienced related industry professionals.

WELLINGTON CHILDREN'S HOSPITAL  
Mein Street, Newtown, Wellington

### PRODUCT

The unique design of the Keramo Glass panels were created with pictures and symbols that children can enjoy and interact with.

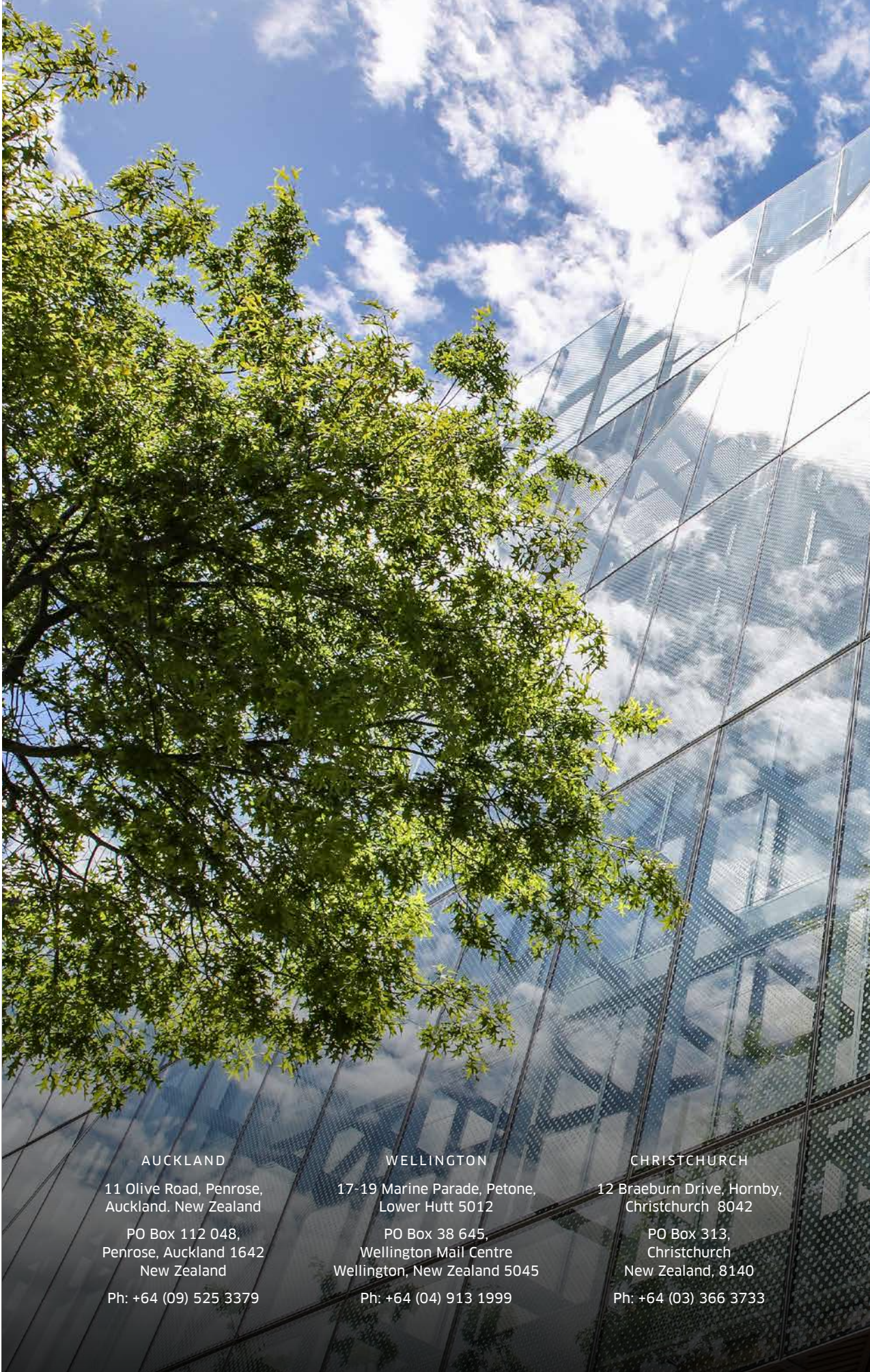






window  
& glass  
association nz

member



UPDATED: 30 June 2021

AUCKLAND

11 Olive Road, Penrose,  
Auckland. New Zealand

PO Box 112 048,  
Penrose, Auckland 1642  
New Zealand

Ph: +64 (09) 525 3379

WELLINGTON

17-19 Marine Parade, Petone,  
Lower Hutt 5012

PO Box 38 645,  
Wellington Mail Centre  
Wellington, New Zealand 5045

Ph: +64 (04) 913 1999

CHRISTCHURCH

12 Braeburn Drive, Hornby,  
Christchurch 8042

PO Box 313,  
Christchurch  
New Zealand, 8140

Ph: +64 (03) 366 3733