

# flexi PLUS

SHELVING AND DISPLAY SYSTEMS  
REDEFINED



**surestyle**  
FIXTURES | FITTINGS



Introducing...

# flexi PLUS

We celebrate our latest product flexi PLUS – where function meets design.

flexi PLUS is a shelving system game changer, as it is adaptable to endless possible solutions to give you the best fit for your interior space.

The structure of this sturdy design comes from the connecting cross members and end panels. These crossmembers and end panels then give flexibility for size and configuration, offering a range of customisation to suit your specifications.

**Benefits of flexi PLUS include;**

- Freestanding units that can create false walls or highlight displays
- Fast to assemble, meaning less down time
- Simple to use with a range of easy to change components
- Designed specifically for retail and commercial applications
- Easy to adapt the look and feel to enhance your brand or interior space

flexi PLUS is very customisable; including backing panels in SlatPanel, SlatGrid or plain panels, framed doors, shelving options, plus an endless range of joinery components such as cabinets, base plinths and drawer units

flexi PLUS is completely compatible with our Flexiwall 50 hang-rails and accessories. This enables the addition of hanging and merchandising options to your instore presentation.

flexi PLUS is on full display in our Auckland Showroom at 7 Moa Street, Otahuhu, Auckland.

Alternatively, please ring 0800 474 358 to discuss your specific requirements.

# flexi PLUS

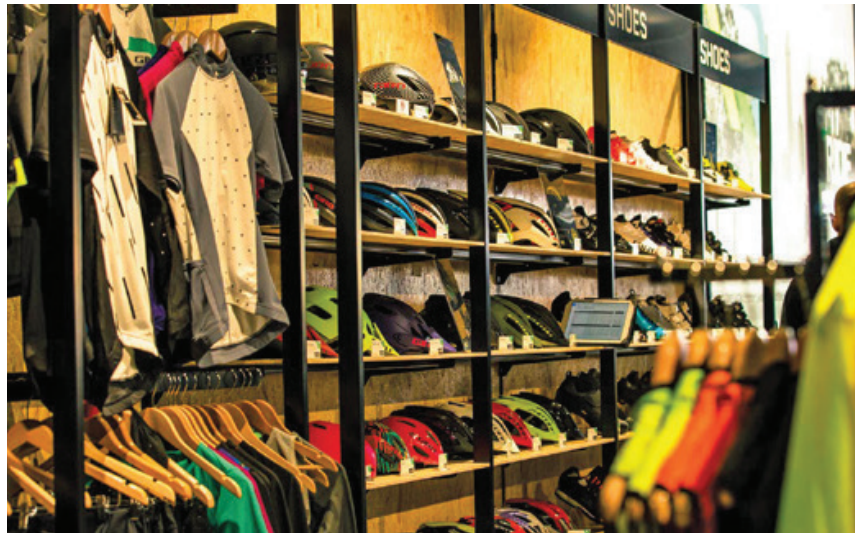
## PROJECT SNAPSHOTS

### MY RIDE

NEW ZEALAND & AUSTRALIA

Innovative Bike brand My Ride lives by their moto 'uncompromised performance, style and value'. This was the same application applied to the design of their stores.

Surestyle has provided My Ride with many variants of flexi PLUS throughout both New Zealand and Australia. Effective use of backing panels including SlatPanel, PegBoard, SlatGrid and custom cabinetry has enabled a wide range of merchandise to be displayed from clothing to bike accessories and cycling essentials.



### CHAMPIONS OF THE WORLD

WIGRAM, CHRISTCHURCH

Champions of the World is home to New Zealand's largest re-selling of licensed All Blacks and Super Rugby clothing and merchandise. Surestyle flexi PLUS features in the recently fitted out store in Christchurch to display the collector's range.

The use of black flexi PLUS ties this product to the overall look and creates versatile and attractive merchandising for the wide range of products on offer.



## STIRLING SPORTS

BAYFAIR, TAURANGA

Stirling Sports is one New Zealand's largest sports retail groups, with over 54 franchises. Surestyle and Stirling Sports have a long-standing relationship supporting them with fixtures and fittings and custom displays.

When the opportunity came to refresh the brand for a new-look shelving system for the Bayfair franchise, **flexi PLUS** was the chosen option. It allowed for customisation of joinery designs and standard hangrails and accessories to suit the extensive collection of sportswear and activewear that the store stocks.



## COMPOSITE RETAIL

ALBANY, AUCKLAND

Composite retail is a well-established cooperative since 1968, with over 200 stores and 8 divisions in New Zealand.

Surestyle was approached by Composite to create an upmarket look for the meeting and design rooms at the new head office.

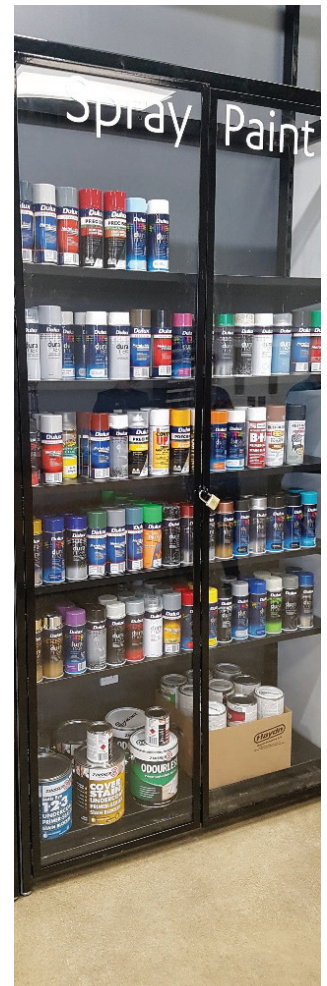
The focus was to display and showcase their own clothing and footwear brands to their members. **flexi PLUS** with a combination of SlatPanel and plain backing panels and a range of hanging rails were used to give an adaptable system for the ever-changing trends and seasonal changes required to showcase their latest collections.

## GUTHRIE BOWRON

NATIONWIDE

Guthrie Bowron is New Zealand's home decorating specialists with their focus being on helping kiwis to transform their houses into homes.

**flexi PLUS** was innovatively utilized in these spaces to create custom displays for hanging large carpets and clear door cupboard units for secure yet visible display for flammable products.



# flexi PLUS

## PROJECT SNAPSHOTS

### FLOWER SYSTEMS PENROSE, AUCKLAND

Flowers Systems is home to New Zealand's largest range of artificial flowers and foliage.

We were asked to find a solution for a freestanding, simple and portable system for exhibiting at shows and the Gift Fairs around New Zealand.

**flexi PLUS** was the ideal choice as it provided a versatile system to meet their ever-changing seasonal displays, with the flexibility to display a wide range of shelved and hanging products.

With a combination of plain and SlatPanel backing panels and custom shelving, the solution has been a great success.



### GRACE'S PARTY DRESSES LYNMALL, AUCKLAND

Grace's Party Dresses is a store that captures every little girl's dream. The owner approached Surestyle in the search for a freestanding shelving option suitable for the specifications of Lynn mall. By fully utilising the merchandising capabilities with **flexi PLUS** not only has Grace's Party Dresses gained approval from the mall designers, the client was able to display an extensive collection of merchandise while keeping the products not **flexi PLUS** as the focus.



## ASTRO HOSPITALITY KINGSLAND, AUCKLAND

Astro Hospitality is an Auckland based showroom showcasing a variety of top brands essentials to inspire motelier's and hotelier's spaces. We were approached for a practical yet stylish shelving system to display an array of their smaller products such as electrical items and bathroom products. **flexi** PLUS with full depth shelving and brackets provided the ideal solution.

## SUPERETTE NEWMARKET, AUCKLAND

Superette is a leading fashion retailer of street and casual wear. The new flagship store in Newmarket utilises **flexi** PLUS as the solution to provide racking across the large front windows while still providing visibility through into the heart of the store. With the added advantage of the ability to merchandise on both sides, a sleek and modern look was achieved while holding a considerable amount of stock.



# COMPONENTS

## FRAMES & CROSS-MEMBERS

**flexi** PLUS

### FLEXIPLUS FRAMES

#### 1. UPRIGHT FRAMES

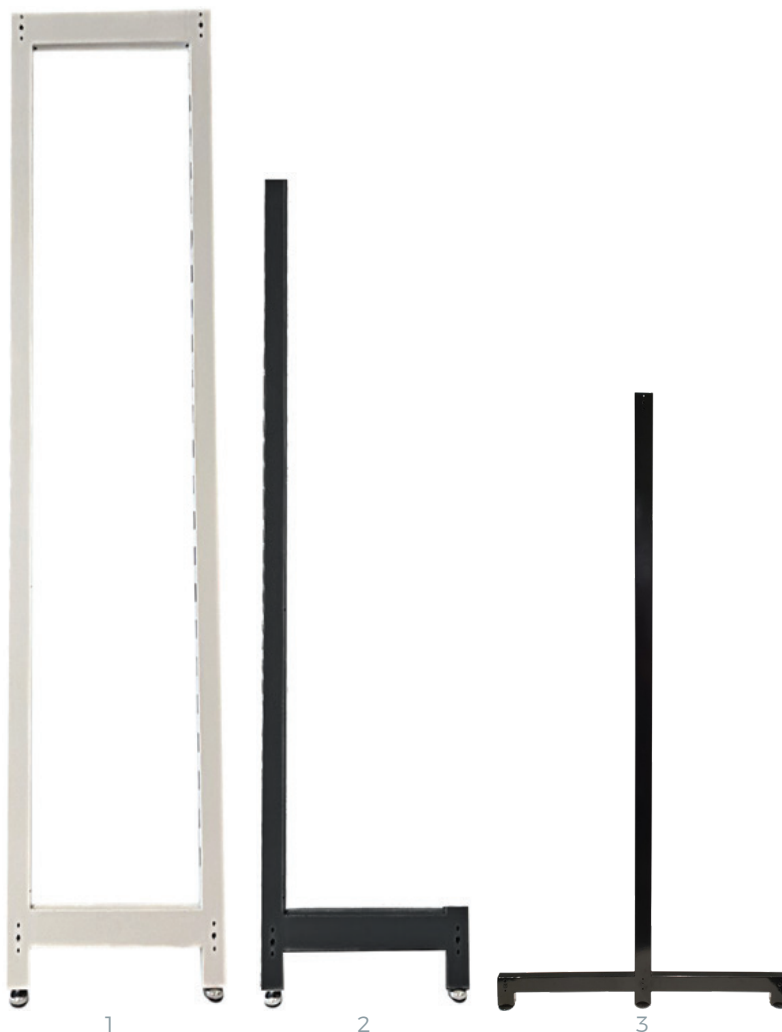
FPU45x1355BK	450mm x 1355mm - Black
FPU45x1355WH	450mm x 1355mm - White
FPU45x1805BK	450mm x 1805mm - Black
FPU45x1805WH	450mm x 1805mm - White
FPU45x2355BK	450mm x 2355mm - Black
FPU45x2355WH	450mm x 2355mm - White

#### 2. Upright L Leg

FPUL45x1355BK	450mm x 1355mm - Black
FPUL45x1355WH	450mm x 1355mm - White
FPUL45x1805BK	450mm x 1805mm - Black
FPUL45x1805WH	450mm x 1805mm - White
FPUL45x2355BK	450mm x 2355mm - Black
FPUL45x2355WH	450mm x 2355mm - White

#### 3. Upright T Leg

FPUT45x1355BK	450mm x 1355mm - Black
FPUT45x1355WH	450mm x 1355mm - White
FPUT45x1805BK	450mm x 1805mm - Black
FPUT45x1805WH	450mm x 1805mm - White



### FLEXIPLUS CROSS-MEMBERS

FPCM600BK	600mm Black
FPCM600WH	600mm White
FPCM900BK	900mm Black
FPCM900WH	900mm White
FPCM1200BK	1200mm Black
FPCM1200WH	1200mm White

4 required per bay for upright and T Leg  
3 required per bay for L Leg

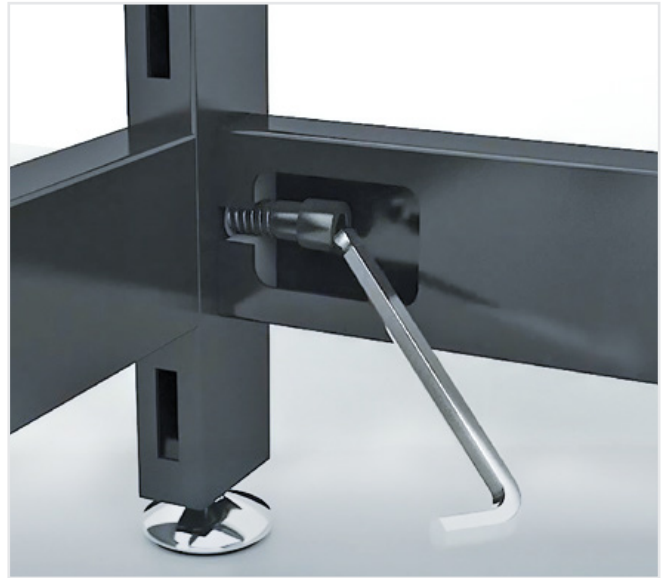




# ASSEMBLY

FAST, SIMPLE & EASY

**flexi** PLUS



# INFILL PANELS & BASE SHELVES

**flexi** PLUS

## PLAIN INFILL PANEL - 550MM HIGH

FPIP600	600mm White/Coloured - 18mm melamine
FPIP900	900mm White/Coloured - 18mm melamine
FPIP1200	1200mm White/Coloured - 18mm melamine

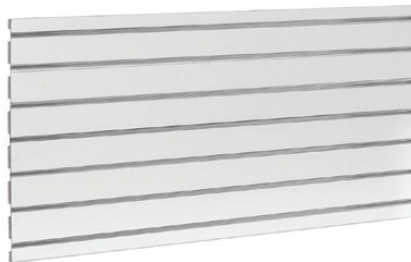
Requires 1 pair of support brackets per panel.



## SLATPANEL INFILL PANEL - 550MM HIGH

FPIPSP600	600mm - White/Coloured
FPIPSP900	900mm - White/Coloured
FPIPSP1200	1200mm - White/Coloured

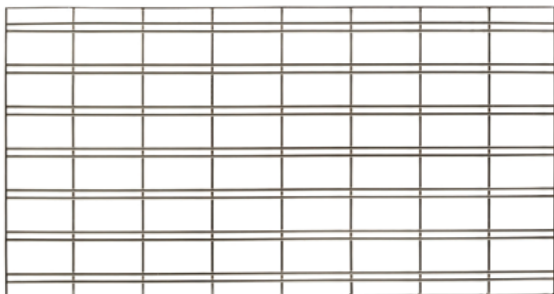
Requires 1 pair of support brackets per panel.  
4 high for 2355mm  
3 high for 1805mm  
2 high for 1355mm



## SLATGRID INFILL PANEL - 550MM HIGH

FPIP SG600	600mm - Black/White
FPIP SG900	900mm - Black/White
FPIP SG1200	1200mm - Black/White

Complete with brackets.



## BASE OR TOP SHELF

FPBSW	White
FPBSC	Coloured

16mm melamine.  
Available in 3 widths  
Rests on crossmember bolts



## INFILL PANEL SUPPORT BRACKETS PAIR

FPIP SB BK	Black 550mm
FPIP SB WH	White 550mm

Suitable for 18mm thickness panels x 550mm high.



## SIGNAGE EXTENSIONS DOUBLE AND SINGLE SIDED - 300MM HIGH

**SINGLE SIDED EXTENSIONS**  
FPUSESS300BK 300mm single sided - Black

**DOUBLE SIDED EXTENSIONS**  
FPUSEDS300BK 300mm double sided - Black

Ideal for sign boards and additional bay height



# HANG RAILS & ACCESSORIES

**flexi** PLUS

Available in black, white, chrome and satin chrome (black/white shown)

## SIDE HANG RAIL 300mm deep

FWSH600X25BK	600mm Black
FWSH600X25WH	600mm White
FWSH900X25BK	900mm Black
FWSH900X25WH	900mm White
FWSH1200X25BK	1200mm Black
FWSH1200X25WH	1200mm White

For side hang merchandising.



## CENTRE HANG RAIL 175mm deep

FWSH175X1200BK	1200mm Black
FWSH175X1200WH	1200mm White

Half depth for smaller hangers or for centre hanging.



## FRONT HANG RAIL 50mm deep

FWFH600X25BK	600mm Black
FWFH600X25WH	600mm White
FWFH900X25BK	900mm Black
FWFH900X25WH	900mm White
FWFH1200X25BK	1200mm Black
FWFH1200X25WH	1200 White

For front hang rail accessories, or "U" rails.



## SIDE HANG CLIP ON "U" RAIL

FWSHU600X25BK	600mm Black
FWSHU600X25WH	600mm White

Use in combination with a front hang rail to allow for side hanging and front hanging within one bay.



## FACE FORWARD/ WATERFALL ARM

FWFFA350BK	350mm Black
FWFFA350WH	350mm White

FW6WX25BK	350mm waterfall Black
FW6WX25WH	350mm waterfall White

Fits all hang rails, ideal for front hang merchandising.



## STEPPED ARM

FWSTA400X25BK	400mm Black
FWSTA400X25WH	400mm White

Ideal for two level merchandising, fits all hang rails.



## PRONG HOOK

FWPH200X25BK	200mm Black
FWPH200X25WH	200mm White

Fits all hang rails, ideal for hang sell applications.



## DOUBLE SIDED ARM

FWDSA250X25BK	
FWDSA250X25WH	

Fits 12.7mm tube, 250mm arms each side. Ideal for use with half depth side hand rail.



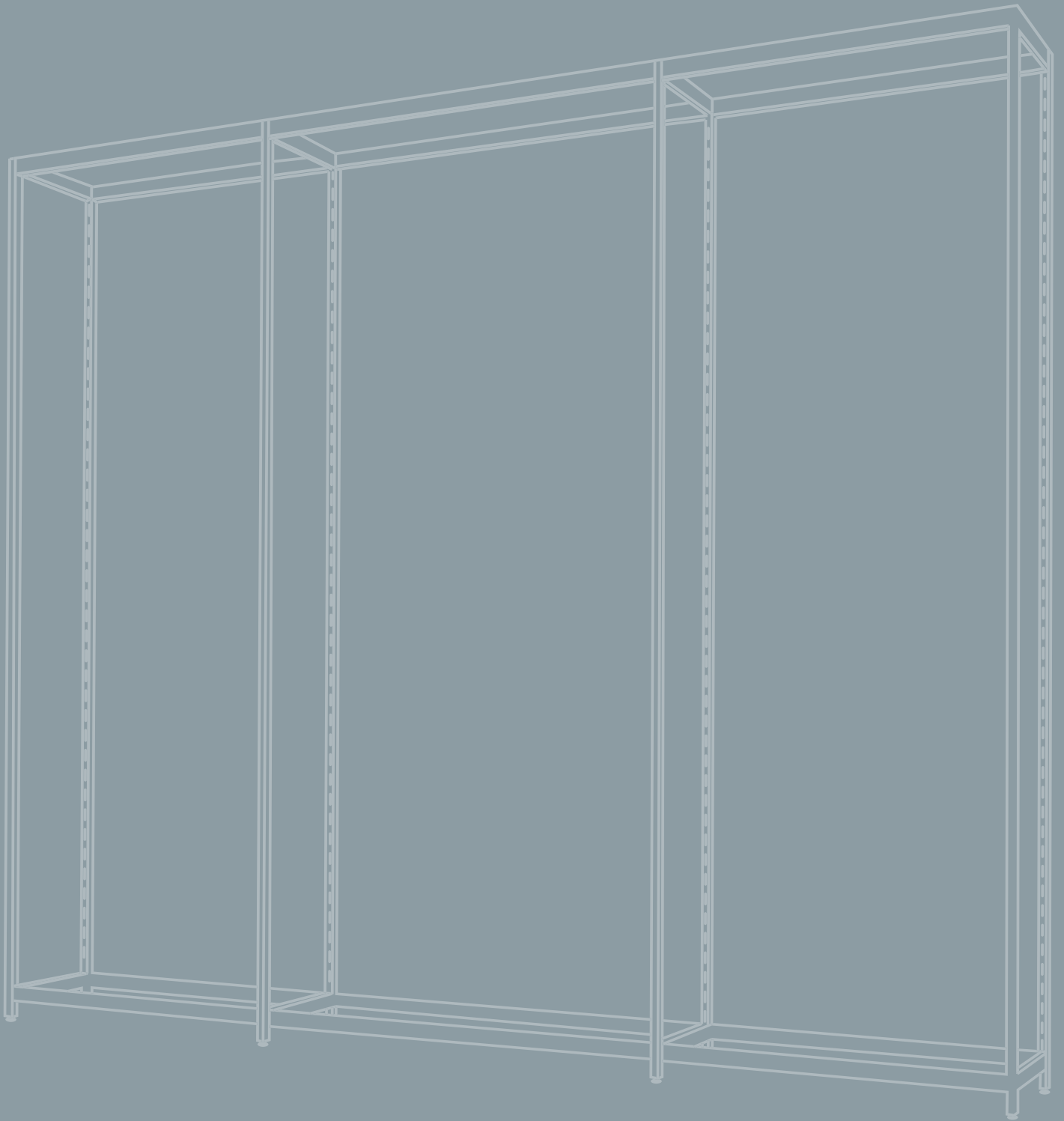
## SHELF BRACKET 25mm pair

FWSB18X300L/RBK	18mm x 300mm Black
FWSB18X300L/RWH	18mm x 300mm White
FWSB300L/RBK	25mm x 300mm Black
FWSB300L/RWH	25mm x 300mm White

Left and right shelf brackets 300mm.



WIDE RANGE OF ACCESSORIES



# surestyle

Visit [surestyleprojects.co.nz](https://www.surestyleprojects.co.nz) for more inspiration

**P** 0800 474 358

**Showroom** 7 Moa Street, Otahuhu, Auckland 1062

[www.surestyle.co.nz](https://www.surestyle.co.nz)

