

**UniCote<sup>®</sup>**

Home Inspiration



[unicote.com.au](http://unicote.com.au)



# Contents

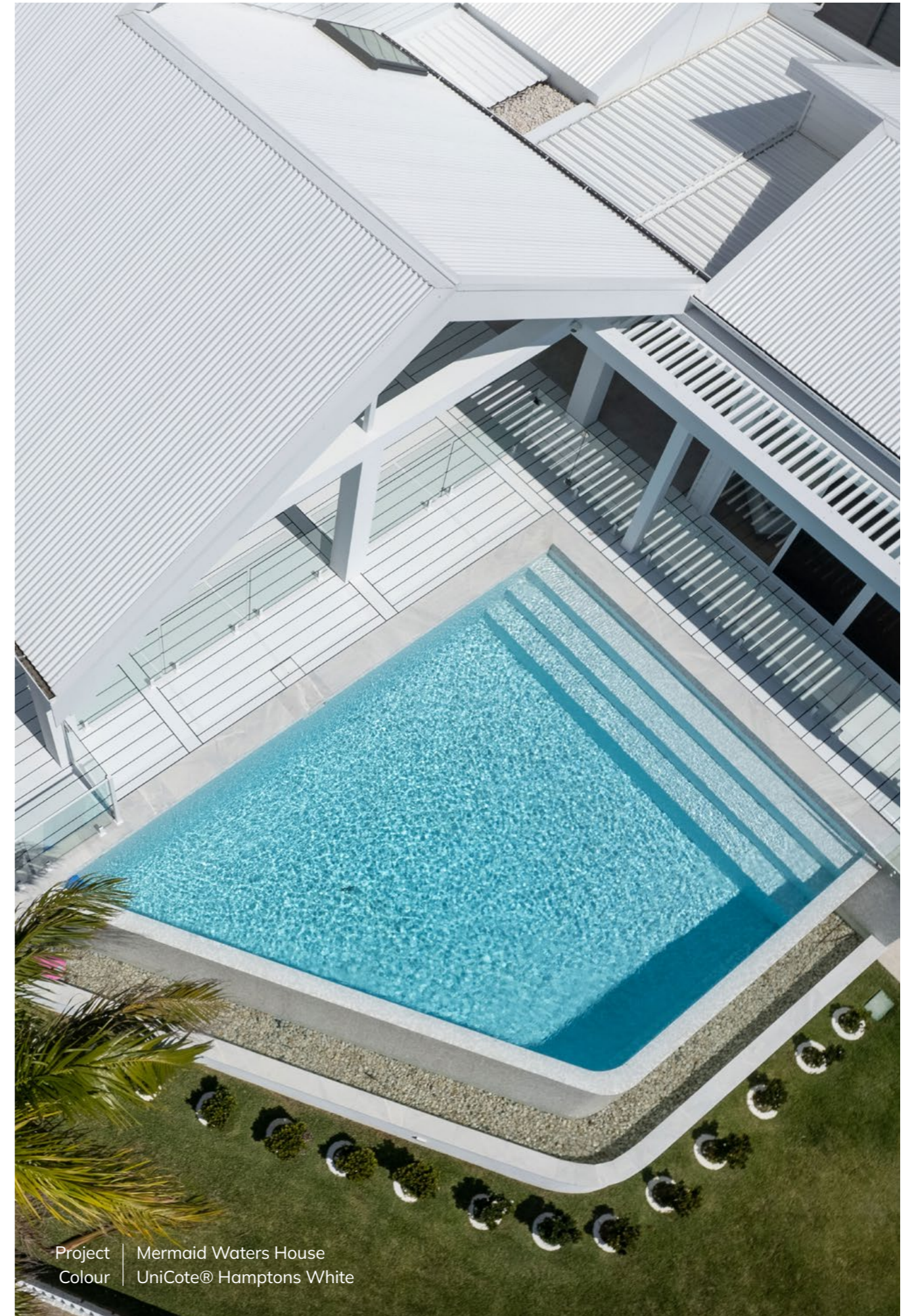
Introduction	3
Benefits	5
Warranties	7
Hamptons collection	9
Essential range	13
Contact	18

## Beyond Colour. Australia's Premium Steel Choice.

Protecting your investment with our proven performance. UniCote® steel, shaped by extensive testing, years of experience, and continuous innovation, stands as an ever-reliable and lasting choice for countless Australian homes. Its enduring style combines not only performance but also embraces the beauty of our ever-evolving colour palette, meticulously curated to draw inspiration from the captivating landscape that surrounds us.

When deciding on the finishing touch for your humble abode, feel comfortable knowing you've made a sound choice with UniCote®.

[unicote.com.au](http://unicote.com.au)



Project | Mermaid Waters House  
Colour | UniCote® Hamptons White

# Benefits

Beneath the captivating exterior of UniCote® steel lies a set of qualities that guarantee enduring performance and long-lasting street appeal for your next project or humble abode. Through rigorous testing, an extensive colour range, and more, we welcome you to delve deeper into understanding what safeguards your home with UniCote® steel.

Project | Yourtown Tallebudgera  
Colour | UniCote® Hamptons White



---

### Captivating Colour Range

Select from a palette of 23 colours that include timeless classics, modern shades and coastal Hamptons-inspired hues.

### Tested in Australian Conditions

Manufactured to AS/NZS 2728:2013 and rigorously tested to perform in the harshest conditions throughout Australia.

### Strong Warranties

Warranties up to 30 years.  
Pre-approved within 48 hours.

---

### Low Maintenance

Long lifespan and durability with minimal upkeep.

### Non-Combustible

Fire rated and compliant to AS1530.1 / AS1530.3. Manufactured for the most extreme BAL-FZ category.

### Thermal Efficiency

UniCote® utilises cool pigment technology to reflect more of the sun's heat, helping keep homes cooler in the summer.

---

### Sustainability

UniCote® not only has a long lifespan, but it contains recycled content and the steel itself is 100% recyclable.

# Warranties up to 30 years

UniCote® steel products are thoughtfully designed and rigorously tested to provide optimum protection.

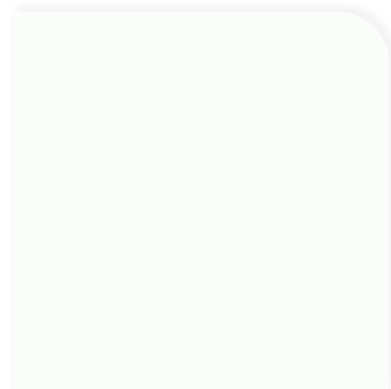
Whether you can feel the salt laden air on your face along the coast, or enjoy the tranquility of your own suburban backyard inland, UniCote® provides strong warranties specific to your location.

To apply for a warranty for your home, visit [unicote.com.au/warranty](http://unicote.com.au/warranty)



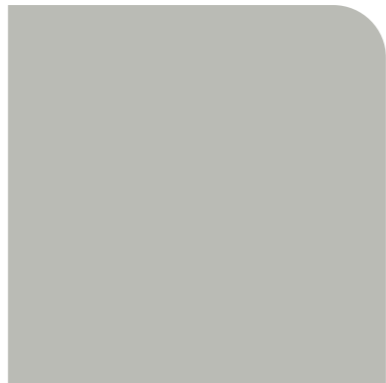
# Hamptons collection

Encapsulate high-end coastal living in your next project with our Hamptons collection.



**Hamptons White**  
SA 0.27 | SRI 90

The purest white on the market, Hamptons White offers a fresh, calm and bright colour option for the perfect "Hamptonesque" finish to your build.



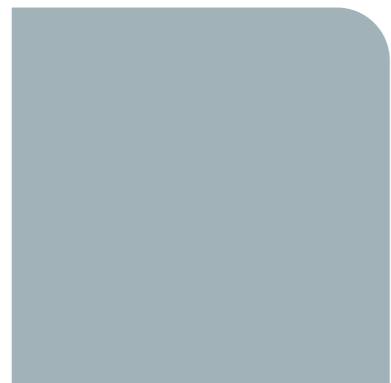
**Montauk**  
SA 0.39 | SRI 73

Introduce a touch of modern sophistication with Montauk. A versatile option that matches well with natural materials to create a peaceful abode.



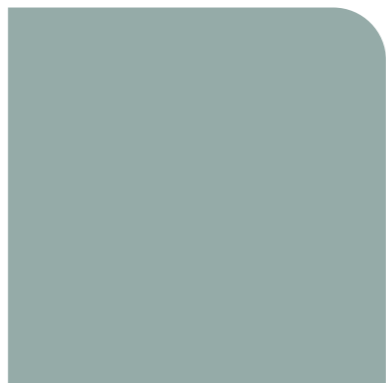
**Stony Brook**  
SA 0.59 | SRI 46

Create the perfect backdrop for your Hamptons home with the trendy and serene Stony Brook. A flexible modern colour option for seamless design.



**Water Mill**  
SA 0.45 | SRI 65

Imagine breaking waves and crystal clear oceans to create a calming and tranquil atmosphere with the versatile Water Mill.



**Long Island**  
SA 0.45 | SRI 65

Reminisce about the fauna and flora from your favourite coastal destination with the calm and fresh Long Island.

Project | Yourtown Tallebudgera  
Colour | UniCote® Hamptons White





# Essential range



**Hamptons White**  
SA 0.27 | SRI 90



**Off White**  
SA 0.38 | SRI 81



**Merino**  
SA 0.45 | SRI 65



**Smooth Cream**  
SA 0.37 | SRI 76



**Dusk**  
SA 0.57 | SRI 49



**Birch**  
SA 0.47 | SRI 62



**Gull Grey**  
SA 0.43 | SRI 68



**Montauk**  
SA 0.39 | SRI 73



**Water Mill**  
SA 0.45 | SRI 65



**Long Island**  
SA 0.45 | SRI 65



**Stony Brook**  
SA 0.59 | SRI 46



**Wallaroo**  
SA 0.64 | SRI 39



**Basal**  
SA 0.69 | SRI 33



**Iron Grey**  
SA 0.74 | SRI 26



**Mountain Blue**  
SA 0.75 | SRI 25



**Armour Grey**  
SA 0.58 | SRI 46



**Jasmin Brown**  
SA 0.68 | SRI 34



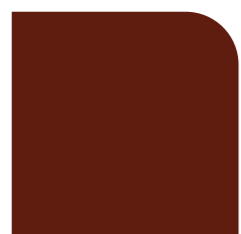
**Slate Grey**  
SA 0.71 | SRI 30



**Monolith**  
SA 0.73 | SRI 28



**Ebony**  
SA 0.96 | SRI 0



**Heritage Red**  
SA 0.74 | SRI 26



**Caulfield Green**  
SA 0.75 | SRI 25



**Mist Green**  
SA 0.60 | SRI 45









## Get in touch

For more information, advice or samples, get in touch with our UniCote® team.

unicote.com.au  
1800 UNICOTE (1800 864 268)

---

### Head office

#### Victoria

64-66 Ventura Place  
Dandenong South  
VIC 3175

---

### State offices

#### New South Wales

15 Wonderland Drive  
Eastern Creek  
NSW 2766

#### Queensland

Unit 5, 145 Archerfield Road  
Richlands  
QLD 4077

#### Western Australia

10 Glassford Road  
Kewdale  
WA 6105

#### South Australia

26 Circuit Drive  
Hendon  
SA 5014

---

Follow us @unicotesteel



Solar Absorptance (SA) is the fraction of the total incident solar radiation that is absorbed by the roofing material. It is expressed as a ratio between 0 and 1, with a lower number a cooler option. These are nominal values calculated in accordance with ASTM E 903-96.

Solar Reflectance Index (SRI) is a measure of the solar reflectance and emissivity of materials. Measured on a scale of 0 (least reflective) to 100 (most reflective). These are nominal values calculated in accordance with ASTM E1980-11.

The colours, patterns and design shown are provided as a guide only. We strongly recommend comparing your choice with an actual steel sample as colour and textural variations may apply. Please check availability of your chosen colour with your supplier. UniCote® is a registered trade mark of Selection Steel Trading Pty Ltd. © 2023 Selection Steel Trading Pty Ltd. ABN 37 005 324 407. All rights reserved.

**Beyond Colour.  
Australia's Premium Steel Choice.**

Visit [unicote.com.au](http://unicote.com.au)

**UniCote®**

V1.0 2024

